



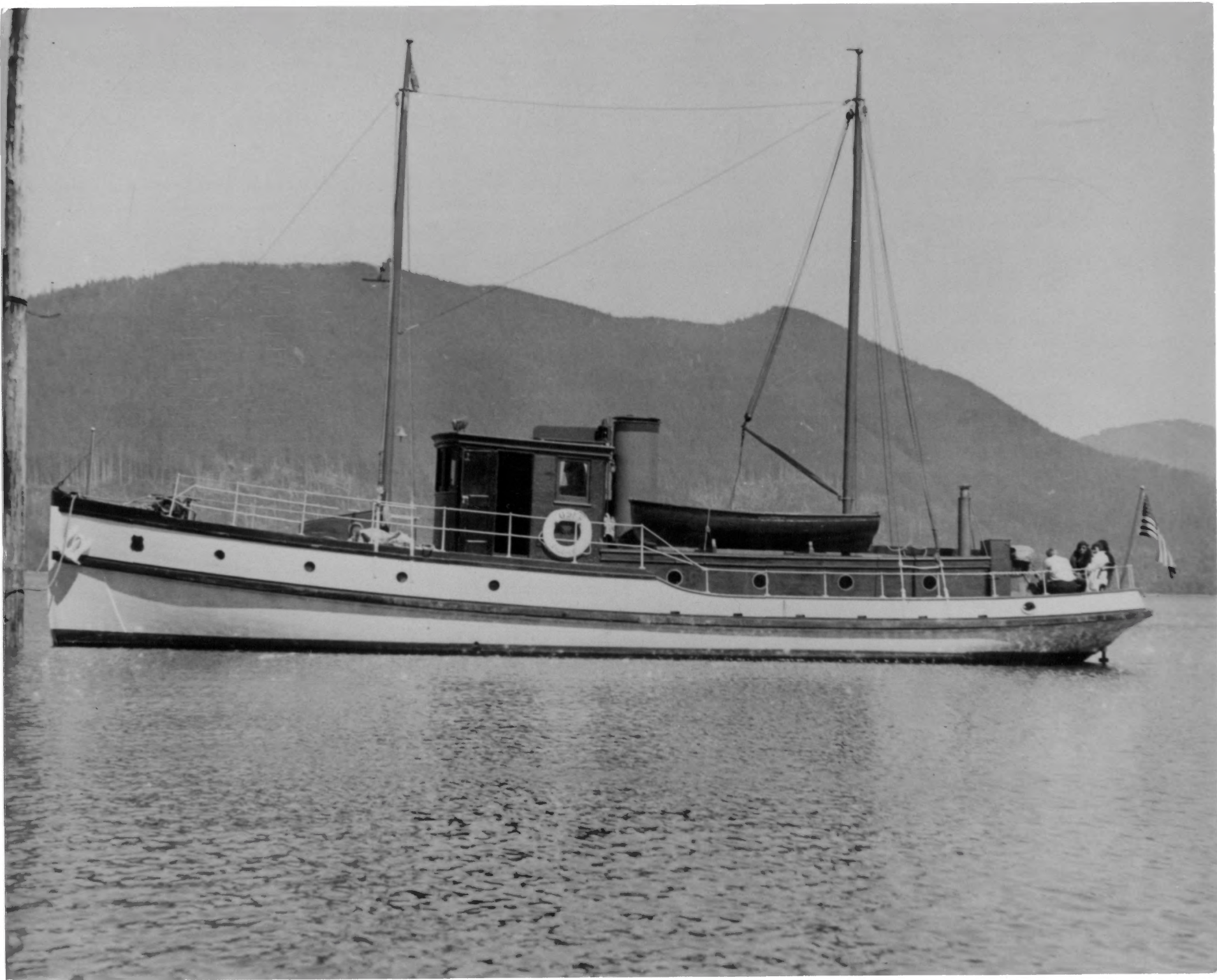


CHUGACH

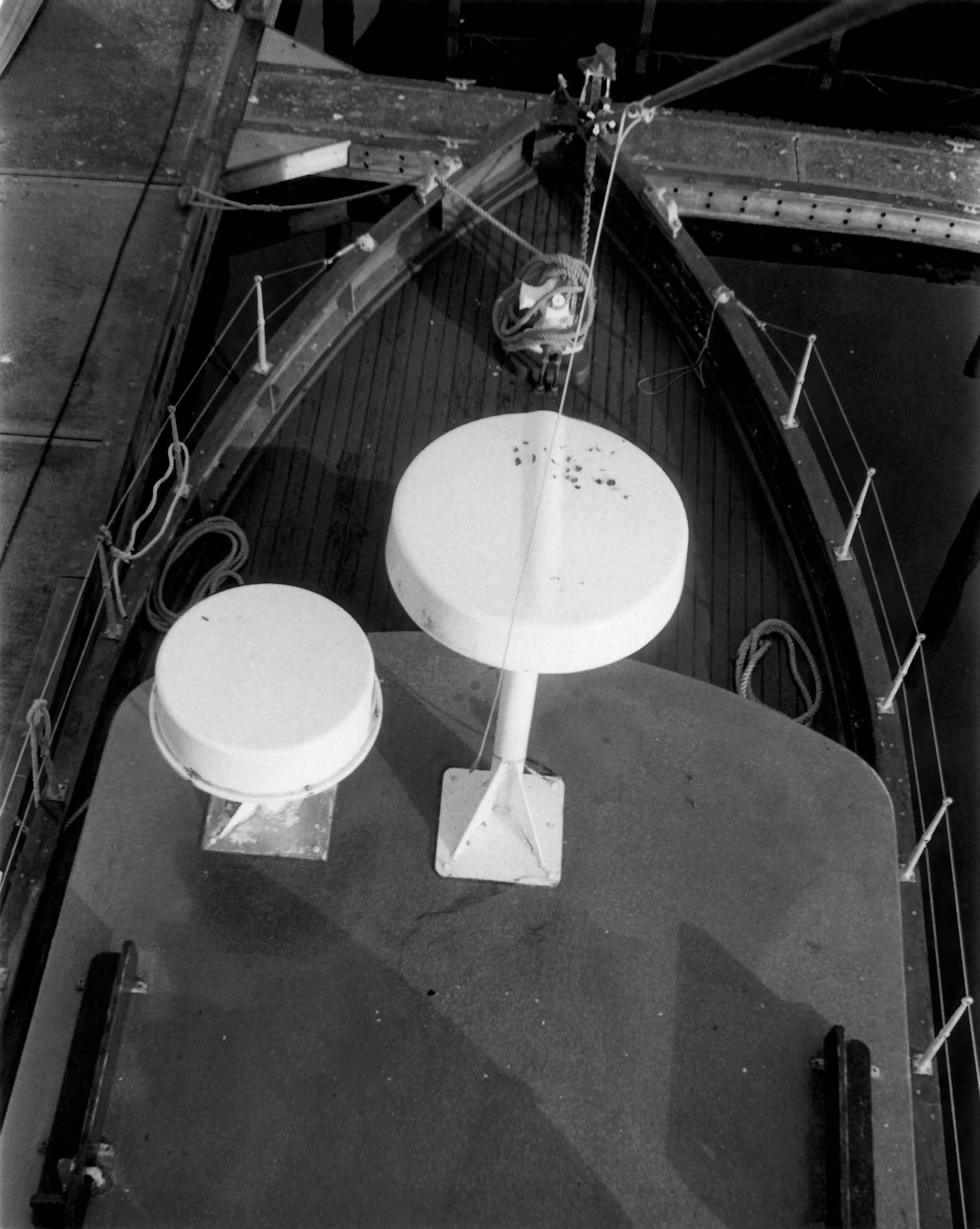




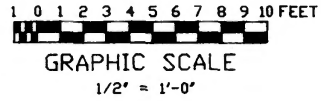
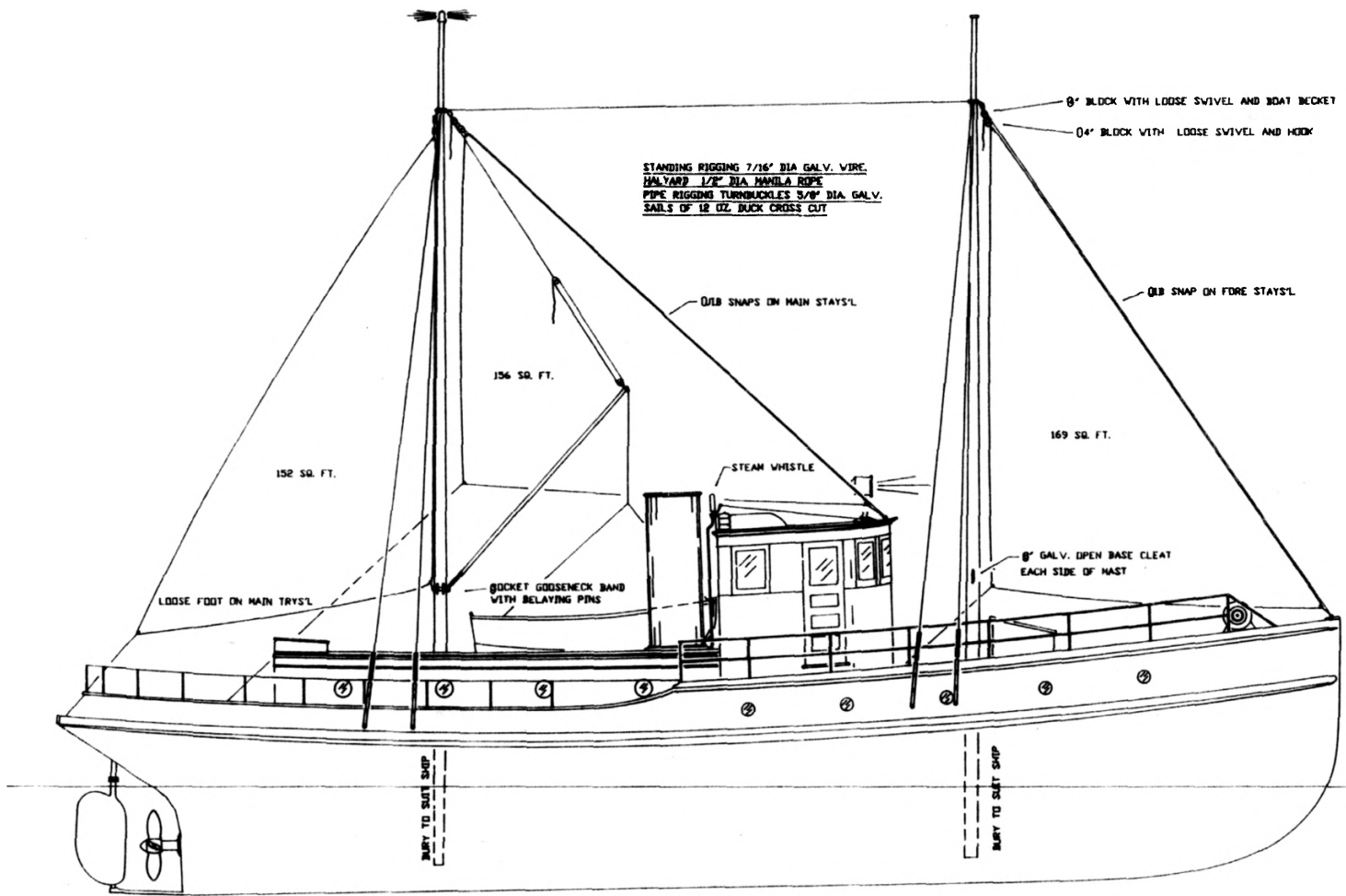












SAIL AND RIGGING PLAN  
 M.S. CHUGACH  
 OF  
 U.S. FOREST SERVICE  
 L.E. GEARY, NAVAL ARCHITECT, SEATTLE - SEPT. 7, 1928

Figure 9. L. E. Geary, Naval Architect, "Sail and Rigging Plan, MS Chugach," Blueprint for USFS, September 7, 1928, computerized and reduced copy by Dave Funaro, 1990. Figures: Page 14.









CHUGACH

U.S.  
COAST GUARD



KETCHIKAN, ALASKA

