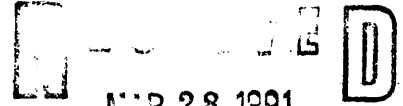


United States Department of the Interior National Park Service



National Register of Historic Places Registration Form

NATIONAL REGISTER

This form is for use in nominating or requesting determinations of eligibility for individual properties or districts. See instructions in Guidelines for Completing National Register Forms (National Register Bulletin 16). Complete each item by marking "x" in the appropriate box or by entering the requested information. If an item does not apply to the property being documented, enter "N/A" for "not applicable." For functions, styles, materials, and areas of significance, enter only the categories and subcategories listed in the instructions. For additional space use continuation sheets (Form 10-900a). Type all entries.

1. Name of Property

historic name Horace Anthony House other names/site number N/A

2. Location

street & number 1206 Anthony Place not for publication city, town Camanche vicinity state Iowa code Ia. county Clinton code 045 zip code 52730

3. Classification

Table with 3 columns: Ownership of Property, Category of Property, Number of Resources within Property. Includes checkboxes for private/public ownership and building/district/site/structure/object categories.

Name of related multiple property listing: N/A Number of contributing resources previously listed in the National Register 0

4. State/Federal Agency Certification

As the designated authority under the National Historic Preservation Act of 1966, as amended, I hereby certify that this nomination request for determination of eligibility meets the documentation standards for registering properties in the National Register of Historic Places and meets the procedural and professional requirements set forth in 36 CFR Part 60. In my opinion, the property meets does not meet the National Register criteria. See continuation sheet. Signature of certifying official: State Historical Society of Iowa Date: 3/21/91

In my opinion, the property meets does not meet the National Register criteria. See continuation sheet. Signature of commenting or other official: Date: State or Federal agency and bureau:

5. National Park Service Certification

I, hereby, certify that this property is: entered in the National Register. See continuation sheet. determined eligible for the National Register. See continuation sheet. determined not eligible for the National Register. removed from the National Register. other, (explain:)

Entered in the National Register Signature of the Keeper: Date of Action: 5/1/91

**6. Function or Use**

Historic Functions (enter categories from instructions)  
Domestic/Single Dwelling

Current Functions (enter categories from instructions)  
Domestic/Single Dwelling

**7. Description**

Architectural Classification  
(enter categories from instructions)

Late Victorian Italiante  
Greek Revival

Materials (enter categories from instructions)

foundation Stone  
walls Brick  
roof Wood  
other Wood

Describe present and historic physical appearance.

**8. Statement of Significance**

Certifying official has considered the significance of this property in relation to other properties:

nationally     statewide     locally

Applicable National Register Criteria     A     B     C     D

Criteria Considerations (Exceptions)     A     B     C     D     E     F     G

Areas of Significance (enter categories from instructions)

Architecture

Period of Significance

ca 1852

Significant Dates

1852

Cultural Affiliation

N/A

Significant Person

N/A

Architect/Builder

Unknown

State significance of property, and justify criteria, criteria considerations, and areas and periods of significance noted above.

See continuation sheet

**9. Major Bibliographical References**

Previous documentation on file (NPS):

- preliminary determination of individual listing (36 CFR 67) has been requested
- previously listed in the National Register
- previously determined eligible by the National Register
- designated a National Historic Landmark
- recorded by Historic American Buildings Survey # \_\_\_\_\_
- recorded by Historic American Engineering Record # \_\_\_\_\_

See continuation sheet

Primary location of additional data:

- State historic preservation office
- Other State agency
- Federal agency
- Local government
- University
- Other

Specify repository: \_\_\_\_\_

**10. Geographical Data**

Acres of property \_\_\_\_\_ Less than one acre \_\_\_\_\_

UTM References

A 

1	5
---	---

7	2	7	7	8	0
---	---	---	---	---	---

4	6	2	8	8	1	0
---	---	---	---	---	---	---

  
Zone Easting Northing

B 

--	--

--	--	--	--	--	--

--	--	--	--	--	--	--

  
Zone Easting Northing

C 

--	--

--	--	--	--	--	--

--	--	--	--	--	--	--

D 

--	--

--	--	--	--	--	--

--	--	--	--	--	--	--

See continuation sheet

Verbal Boundary Description

Lots 24 and 25, Horace Anthony Subdivision  
Block 3, City of Camanche.

See continuation sheet

Boundary Justification

Boundary includes the house and the land historically associated with the property.

See continuation sheet

**11. Form Prepared By**

name/title \_\_\_\_\_ LeRoy C. Goddard Owner  
organization \_\_\_\_\_ date 12/20/90  
street & number \_\_\_\_\_ 1206 Anthony Place telephone (319) 259 1042  
city or town \_\_\_\_\_ Camanche state Iowa zip code 52730

United States Department of the Interior  
National Park ServiceNational Register of Historic Places  
Continuation SheetSection number 7 Page 1

Horace Anthony Home

CFN-259-1118

The Horace Anthony House consists of a two-story cubical shaped main block constructed of locally manufactured red brick and capped with a low pitched roof and an attached one story rear wing of similar material and roof configuration. Stylistically, the house can be described as transitional, which is not surprising given its ca 1852 construction date. The predominant influence is the Italianate mode which can be seen here in the almost cubical form of the edifice. The wide overhanging eaves with bracketed cornice, and the low pitched hipped roof with flat deck. On the other hand, the pedimented hoods over windows and doors, and the main entry with its entablature with dentilled cornice supported by squarish columns with classical detailing and feature side lights and transom with classical enframing are decorative details characteristic of the Greek revival style. On the inside, the house retains a large amount of original white pine woodwork and a rather ornate three floor circular stairway. The ceiling height on the first floor is 9 1/2 feet. The two windows in the front go from ceiling to floor. The other three windows in the front two rooms have decorative woodworking under each window, 27 inches high. They still appear to go from ceiling to floor. The walls being 15 inches thick makes for very massive woodworking around the windows. There are still many panes of the old "wavey" glass that gives you a myopic view. The shutters on the house in the picture of the home taken in 1885 were made of wood with horizontal louvers. The date they were removed has not been found. Ten of them are still stored in our garage. The house has undergone some modifications over the years, but most of this activity has been confined to the rear and has focused on the porch enclosure and screening. The most noticeable missing elements are the balustrade which once graced the roof deck and the symmetrically placed, interior chimney stacks with pilastered caps on the east and west sides of the house. The baseboards are 10" high. All of the woodwork has been assembled from at least three different mouldings.

Three old city street lights were added to the property in 1963. They are just like the lights that are in front of the White House in Washington D.C. The park in front of the house was given to the city when it was platted by Horace Anthony in ca 1852. The city added children's playground equipment in the 1970's. The Anthony's took care of mowing of the park up until the late 1940's.

United States Department of the Interior  
National Park Service

National Register of Historic Places  
Continuation Sheet

Section number 7 Page 2

Horace Anthony Home

CFN-259-1116

No major changes have been made in the Horace Anthony home since it was built in ca. 1852. No walls or doors or windows have been changed. The baseboards are 10 inches high and all the woodwork has been assembled from at least three different mouldings. The doors are of paneled wood and have square rim locks. The east entry door had a brass folding key that was lost in 1963 and a extra long key had to be made for that door. The house is somewhat "T" shaped. The main portion of the home is 36' 3" east and west and 29' 3" north and south. The leg of the "T" of the home is off-centered on the north side of the main structure. It is 24' north and south and 16' 4" east and west. This portion of the home is on the north side of the main structure.

The walls of the home are 15" thick and made of soft brick made locally. The foundation is made of limestone. We have been told that the north portion (the 24' by 16' 3") was the last portion of the house to be built. The walls and the wood and all the material looks to be the same as the other part so we do not believe there was much time difference.

There is a full basement under the main portion. It is 6' 8" deep. The basement floor had been cement covered in about 30 sections of cement of different types, indicating that it had been laid over a long time period. It had shelves used for canned foods. The lumber was very old and the supports for the shelves were in the ground and the cement poured around them. In 1958, the floor was leveled and carpet laid. The coal room still has one wall of wide pine boards. The north leg of the house has a 3 foot crawl space on the north wall of this room. In 1958, a fireplace was built.

The spiral staircase begins in the front (south) entrance and spirals up 47 steps, three floors and exits to a flat roof deck. The flat deck had a balustrade which was removed in the early 1930's.

The floors in the home are wide pine boards except for the floors in the main portion of the downstairs. Floyd Anthony (Horace Anthony's grandson and Frederick H. Anthony's son) put in hardwood floors in the 1920's. We have been told by several Camanche oldtimers that Floyd cut the wood on Beaver Island, close to Camanche, and had the wood milled at Disbrow Lumber in Clinton. Floyd often told how he had to drill by hand in order to nail the floor.

United States Department of the Interior  
National Park Service

National Register of Historic Places  
Continuation Sheet

Section number 7 Page 3

Horace Anthony Home

CFN-258-1116

The 12" by 12" hand hewn beams and supports can be seen in the basement. The nails used in the home are machine cut nails typical of the 1800's.

Floyd Anthony took off the two chimneys that were the fireplace chimneys. Robert Anthony (Floyd Anthony's son) was born in this home in 1920 and he has told me that the furnace had been in the house as long as he could remember. The old furnace was replaced in 1984.

The pine tree in the front of the house shows in a picture of the home taken in 1885, was about 30' high. It is now about 65' high.

In 1958, when we moved in, we installed an island counter for an electric cooking top with cabinets above and a stub wall for an electric oven in the large kitchen. We made the old pantry off the west end of the kitchen into a half bath.

The "summer kitchen", later the "wash, tool and paint room" and now our family room had a covered staircase to the basement. We took the covering off and put walls on the stairwell and carpeted the stairs. Before we did that there was just the dirt walls and the stairs. There was also an open staircase to the basement from the south kitchen wall. This stairway was also finished off and the stairs carpeted.

There are two porches, one on the east side and one on the west side. The roofs on both are supported by octagon multi-trimmed wood posts. The east porch was screened in 1958. The west porch was enclosed in 1984. The roofing boards for the entire house are of random width, rough lumber 15 inches to 20 inches wide. We also poured a cement patio to complete the squareness of the house.

The out buildings are not included in the nomination. In 1959, the shed and the "outhouse" were removed. They both had dirt floors. In 1960, I poured a cement slab and had a two car garage built. When the old buildings were taken down there was an old 'one-lunger' gas engine they used in their wood clamming boat.

United States Department of the Interior  
National Park Service

National Register of Historic Places  
Continuation Sheet

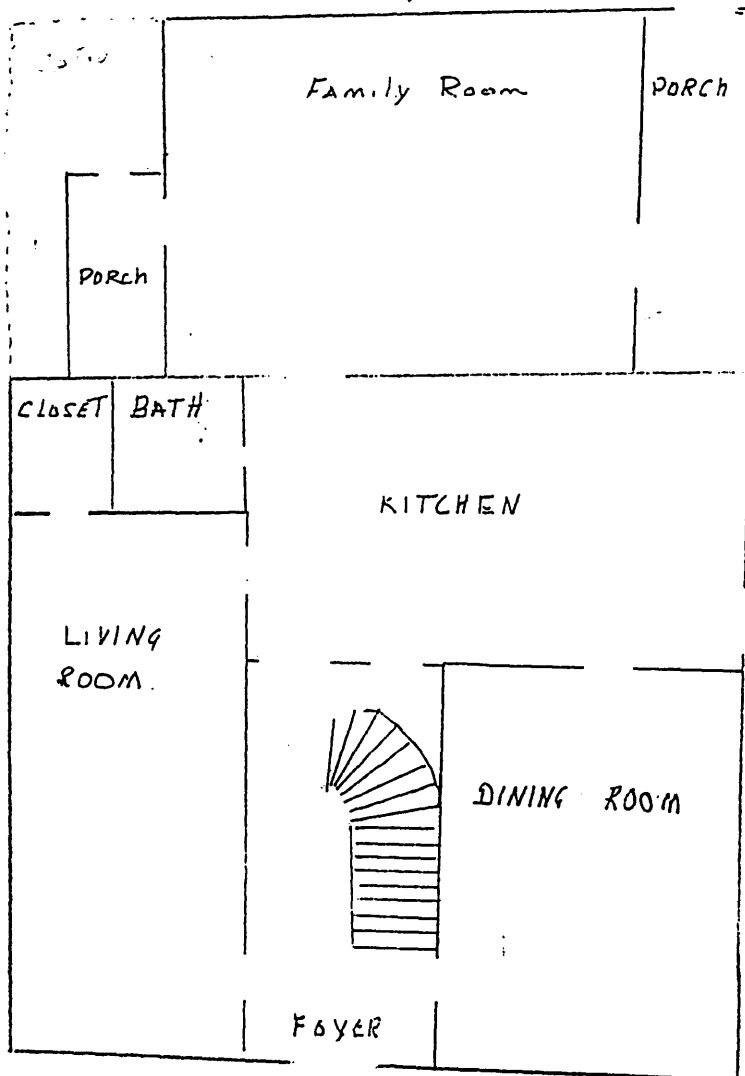
Section number 7 Page 4

Horace Anthony Home

CFN-259-1116

FIRST FLOOR

N.



NOT TO SCALE



United States Department of the Interior  
National Park Service

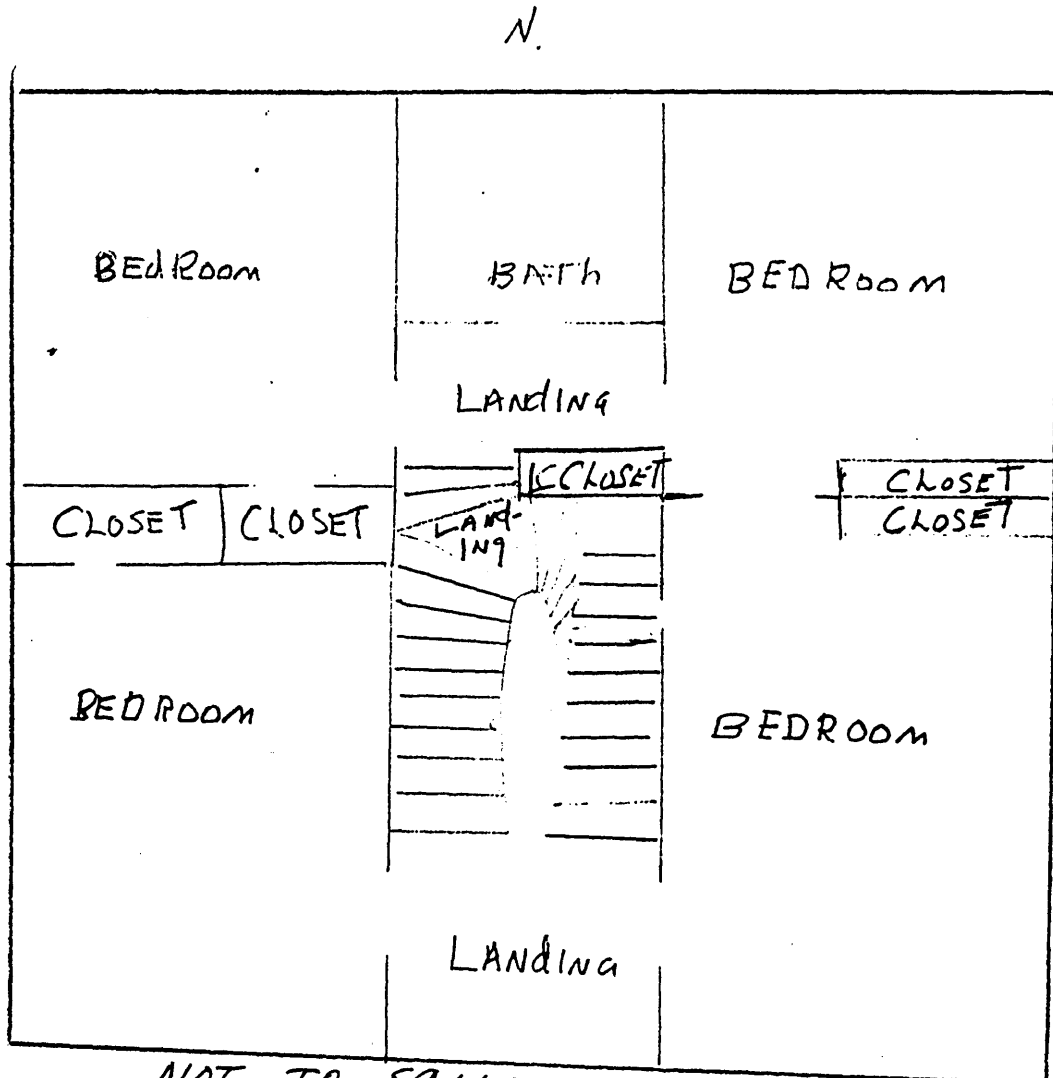
# National Register of Historic Places Continuation Sheet

Section number 7 Page 5

Horace Anthony Home

CFN-259-1116

## SECOND FLOOR



NOT TO SCALE

United States Department of the Interior  
National Park Service

# National Register of Historic Places Continuation Sheet

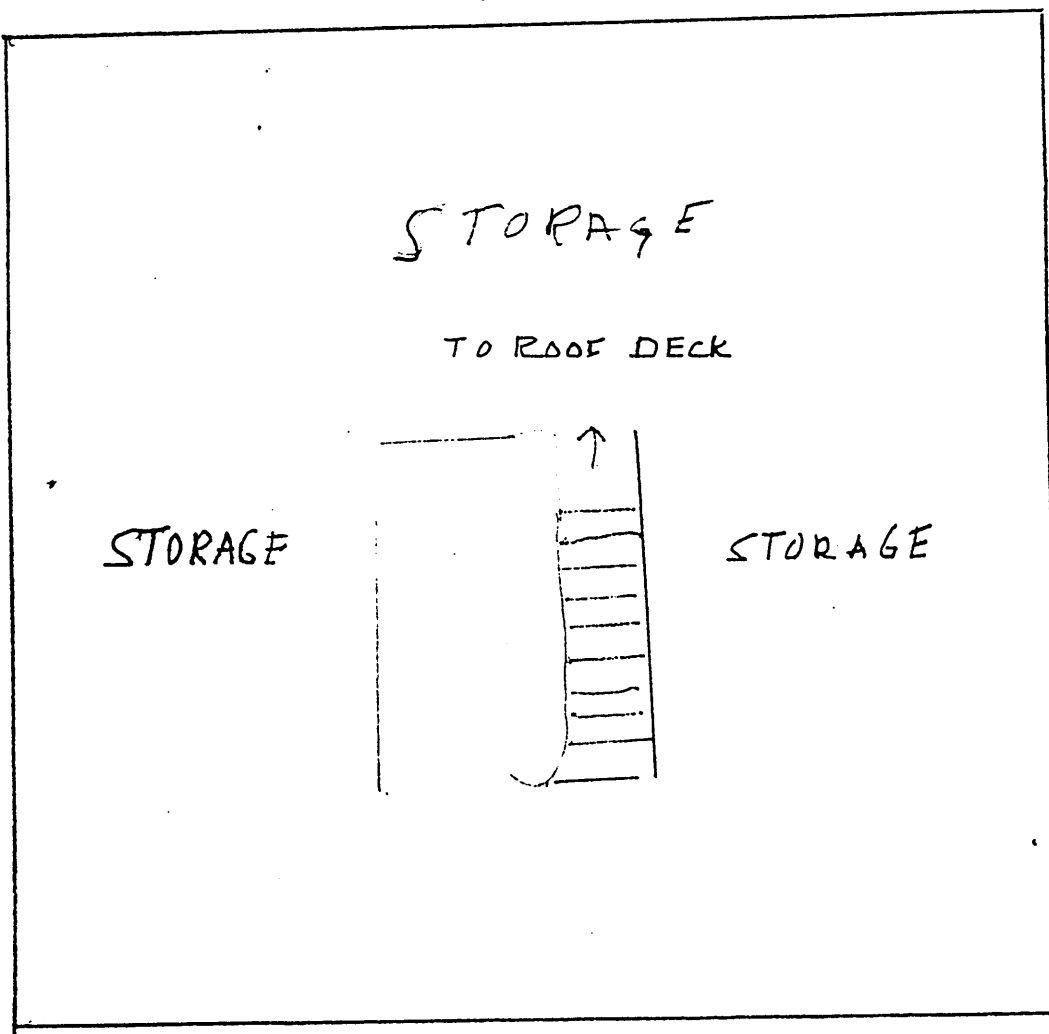
Section number 7 Page 6

Horace Anthony Home

CFN-259-1116

THIRD FLOOR

N.



NOT TO SCALE

United States Department of the Interior  
National Park ServiceNational Register of Historic Places  
Continuation SheetSection number 8 Page 1

Horace Anthony House

CFN-259-1116

The Horace Anthony House is locally significant under criterion C as one of Camanche's earliest and best preserved examples of Italianate influenced design. Constructed in ca. 1852, this residence was one of a handful of buildings in Camanche to survive the infamous tornado of 1860 relatively unscathed. Although the front entry and the window hoods appear to be derived from the Greek revival, making the house somewhat transitional, the overriding stylistic influence is the Italianate, especially in terms of basic form and roof and eave treatment.

Horace Anthony was one of Camanche's most enterprising and public-spirited citizens, always lending a hand to every commendable enterprise. He held several offices of trust and responsibility since he located in the county.

He was on the Camanche Board of Supervisors from 1867 to 1868 and was Chairman in 1868. He was Recorder Treasurer in 1863 to 1865 and a State Representative from 1858 to 1860. He was a staunch Republican.

He was a leading member of the Camanche Baptist Church and used his influence in its organization in 1851. He ardently embraced the anti-slave cause. He and his home was part of the "underground railroad."\* His contribution was mentioned in the 1976 bicentennial history of Clinton and also in an autographed copy of the Clinton County history, written by Estelle Leprovost Youle. She was a newspaper writer for the Clinton Herald newspaper for many years.

In 1958, while digging a hole in the crawl space under the family room, I discovered one handmade shoe and an old brass powder horn. The Camanche Historical Society has the powder horn and I still have the shoe. From down in the crawl space, I could see a difference in the limestone foundation. A portion of the wall was not as complete as the rest of the foundation. I also found it was not difficult to remove some of the large pieces of stone. This furthered my belief that the home had really been used in the "underground railroad." The Anthony's (Floyd - Agnes and son, Robert) had always said it had. We have since found several references to Horace being involved. Ever since we purchased the Horace Anthony House, we have had many requests by children to see the "underground railroad." The Horace Anthony House, having survived the 1860 tornado and its

\* According to family tradition

United States Department of the Interior  
National Park Service

National Register of Historic Places  
Continuation Sheet

Section number 8 Page 2

Horace Anthony House

CFN-259-1116

association with the "underground railroad" has had many local school classes and bus loads of children from schools in nearby towns come to look it over.

The park that was plotted by Horace Anthony in 1852 is still in use by the city. Children's playground equipment was added by the city in the 1970's. The city started mowing the grass in the park in the early 1950's. Up until then the Anthony's always took care of the mowing of the park.

There are only two other houses in this area that are built with the same brick and are of similar style. They were both built at about the same period as the Horace Anthony House. The home located at 1108 3rd Street, Camanche is a 2 story house with a pitched roof and is in fair condition. The other home at 1711 3rd Street, Camanche, has only three walls left that are still in use from the original structure. Mary Jane Case, the present owner, said one wall had to be removed at the time they remodeled in 1950. Neither of those two have the stylistic embellishments that the Horace Anthony House has. Because Horace had the saw mill and the lumber yard and he was one of the more affluent citizens of Camanche, he built a more impressive home. Owners of saw mills would build more grand edifices to show to the best advantage the many forms of wood work. Draftsman were hired by the mills to design houses to show to the best advantage what they had to sell. The Horace Anthony House may have been designed by architects from another area or even copied from a home in Europe. We have been unable to find who helped Horace build his home. He could have used any of a number of skilled craftsmen that purchased materials from his lumber yard.

Horace Anthony was born in Livingston County, New York in 1816 and he died in Camanche, Iowa on May 16, 1890. He married Elizabeth McClosKey in 1840 in Davenport, Iowa. They had nine children. A son, William Robert, went into the saw mill and lumber business with his father who was ill in 1859. They rebuilt the business after the 1860 tornado. He bought out the partner, Horace's brother-in-law, John McClosKey. A \$250,000 fire in 1893 destroyed the major part of the establishment, and caused W.R. Anthony and Company to go out of business.

Frederick Horace Anthony, another son of Horace, took title to the Horace Anthony House during his father's illness. He

United States Department of the Interior  
National Park Service

## National Register of Historic Places Continuation Sheet

Section number 8 Page 3

Horace Anthony House

CFN-259-1116

died in 1888 before his father's death in 1890. Elizabeth, his mother, died in 1883. Frederick Horace died in 1888 and left the home to his 27 year old wife, Ella M. and their two children, Maude and Floyd. Ella, his wife, died in 1938 and left the home to Floyd, her son. After Floyd died, his wife, Agnes sold the house to LeRoy and Doris Goddard in 1958. This ended 107 years of only Anthony's living in the Horace Anthony House.

The design and craftsmanship of the Horace Anthony House is a good and well preserved example of the architectural work of the period.

United States Department of the Interior  
National Park Service

## National Register of Historic Places Continuation Sheet

Section number 9 Page 1

Horace Anthony House

CFN-259-1116

### Sources

The United States Biographical Dictionary and Portrait Gallery of Eminent and Self-Made Men: Iowa Volume (Chicago and New York: American Biographical Publishing Company, 1878), p. 163.

Clinton County Historical Society, History of Clinton County Iowa (Clinton County American Revolution Bicentennial Commission, 1976), pp. 55, 109, 376.

History of Clinton Iowa (Chicago: Western Historical Company, 1879).

Biographical Record of Clinton County, Iowa (Chicago: S.J. Clarke Publishing Company, 1901).

Clinton County History Estelle Leprovost Youle, Copyright, 1948.

P.B. Wolfe, Ed. Wolfe's History of Clinton County Iowa (Indianapolis, Ind.: B. F. Bowen and Company, 1911).

Camanche, Iowa Charter City History Book Clinton Printing Company, Sesquicentennial Committee, 1836-1886.

Camanche Platting Book Clinton County Court House, Records Office, Clinton, Iowa.

Abstract and Title Horace Anthony Home. LeRoy C. Goddard, Camanche, Iowa.

Clinton County Iowa 1946 by Estelle Goodwin Leprovost Youle.

### INTERVIEWS:

Robert L. Anthony, Fayette, Iowa. The Last of 107 years of "Anthony's To Live in the Horace Anthony Home.

Charles D. Frazier, 619 13th Avenue, Camanche, Iowa. Elderly resident of Camanche, Iowa.

Mary Jane Case, 1711 3rd Street, Camanche, Iowa. Local resident and owner of a home in Camanche that was built with the same brick that was used in the Horace Anthony House.

Kerry D. Morehead, 1108 3rd Street, Camanche, Iowa. Local resident and owner of an old home in Camanche that was built with the same brick that was used in the Horace Anthony House.

McClellan Miller, 1821 9th Street, Camanche, Iowa. 83 year old lifelong resident of Camanche, Iowa.

United States Department of the Interior  
National Park Service

# National Register of Historic Places Continuation Sheet

Section number 10 Page 1

Horace Anthony Home

CFN-259-1116

Book 10  
Plat number 554

PLAT OF "HORACE ANTHONY'S  
SUB-DIVISION OF LOT 1, BLOCK 3,  
OF THE ORIGINAL PLAT OF THE  
WILLAGE OF CAMANCHE.  
APRIL 10, 1852

*Book #10 Geographical Data  
Clinton County Court House*

ON THIS 25TH DAY OF APRIL, A.D., 1852 PERSONALLY APPEARED  
BEFORE THE UNDERSIGNED, A NOTARY PUBLIC IN AND FOR SAME  
COUNTY, HORACE ANTHONY AND THOMAS C. DYER, BOTH PERSONALLY  
KNOWN TO ME, AND THE SAID HORACE ANTHONY KNOWN TO BE THE  
IDENTICAL PERSON WHO LAID OUT THIS SUB-DIVISION, AND WHO IS  
THE SOLE AND LEGAL OWNER OF THE TRACT OF LAND EMBRACED IN  
THIS MAP.

A. R. COTTON, COUNTY JUDGE,  
CLINTO COUNTY , IOWA.

FROM ABSTRACT OF TITLE TO  
LOTS 24 & 25, HORACE ANTHONY'S SUB-DIVISION  
OF BLOCK 3, CITY OF CAMANCHE.

ABSTRACT AND TITLE COMPANY  
128 6TH. AVE. SOUTH  
CLINTON, IOWA.

## HORACE ANTHONY HOME

United States Department of the Interior  
National Park Service

National Register of Historic Places  
Continuation Sheet

Section number 10 Page 2

Horace Anthony Home

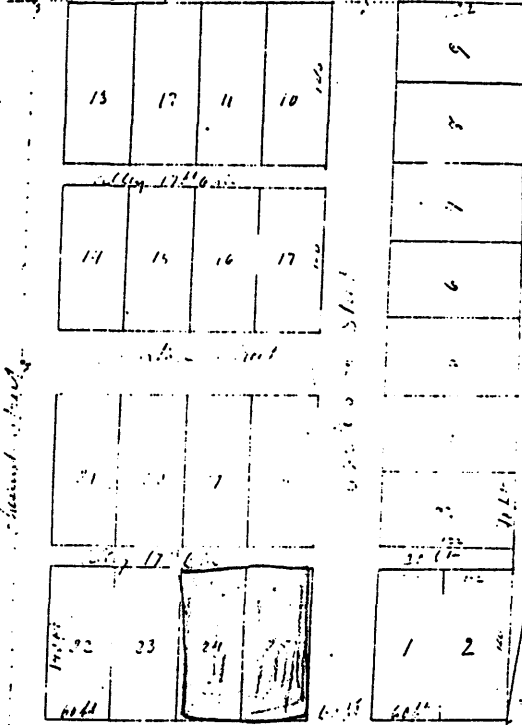
CFN-259-1116

Subdivision of Lot 32 / Platted same as at the original plat  
of Clarence B. ... dated ... 1892

Washington dated:

38A

Original plat 9/22/20  
... title is placed at each  
corner of main lot. Stones  
are placed permanently  
where as is indicated by  
letter in the map.  
The lots are all sixty  
feet in width by one  
hundred and twenty feet  
in length. The ...  
lots 7-8 ... which are  
... in length  
by one hundred and  
twenty feet in width,  
... 26' x 9' ...  
... are on the east  
to the north ...  
... the plat. The  
... is designated  
... lines shown ...  
the street ... base  
... in ...  
the alleys are somewhat  
narrow ...



Explanation  
No. ...  
...  
I.E. ...

State of Iowa  
Clinton County  
...  
...  
...  
...  
...  
...  
...  
...



United States Department of the Interior  
National Park Service

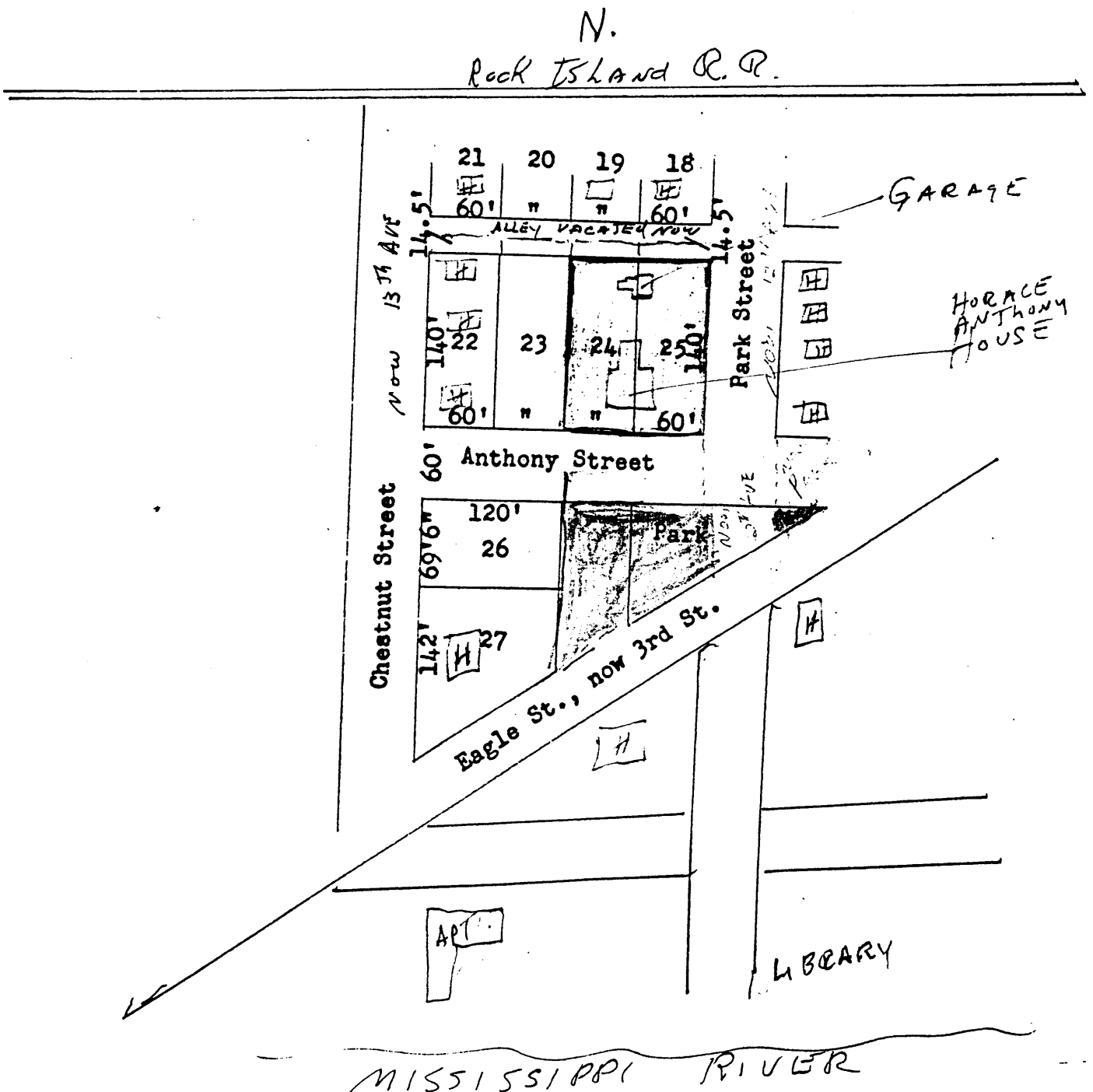
# National Register of Historic Places Continuation Sheet

Section number 10 Page 3

Horace Anthony Home

CFN-259-1116

2. MAP OF PART OF ANTHONY'S SUBDIVISION OF LOT 1, BLOCK 3, CAMANCHE.  
1852 LOT 24 25



United States Department of the Interior  
National Park Service

**NATIONAL REGISTER OF HISTORIC PLACES  
CONTINUATION SHEET**

Section number photo Page 1

---

Horace Anthony House  
1206 Anthony Place  
Camanche, Clinton County, Iowa

Date: December, 1990  
Photographer: Richard Holzworth  
Negatives: SHPO  
View:

1. to N
2. to E
3. to S
4. to W
5. stairway to roof deck exit
6. front entrance
7. front entrance
8. entrance
9. taken from first floor
10. midway landing
11. taken from second floor
12. one of three street lamps