



Chicago, Milwaukee, St. Paul &  
Pacific Railroad Co.: Station, Train  
Shed, and Freight House  
Minneapolis, Minnesota  
Photographer unknown  
1908

Minnesota Historical Society  
690 Cedar Street  
St. Paul, Minnesota 55101  
General view of all structures,  
facing west.

724-A

NOV 28 1978

AUG 9 1978



Chicago, Milwaukee, St. Paul &  
Pacific Railroad Co.: Station, Train  
Shed, and Freight House  
Minneapolis, Minnesota

NOV 28 1978

Lithograph: F. Pezolt, artist  
Circa 1891

Minnesota Historical Society  
690 Cedar Street

AUG 9 1978

St. Paul, Minnesota 55101

View of station complex showing present  
freight house, razed freight house,  
and early side station which was re-  
placed by present head station.

16916



Chicago, Milwaukee, St. Paul &  
Pacific Railroad Co.: Station, Train  
Shed, and Freight House

Minneapolis, Minnesota

Minneapolis, Minnesota

Robert M. Frame III

AUG 9 1978

May 1978

Minnesota Historical Society

690 Cedar Street

NOV 28 1978

St. Paul, Minnesota 55101

General View of all buildings and  
structures, facing west

02458/12



Chicago, Milwaukee, St. Paul &  
Pacific Railroad Co.: Station, Train  
Shed, and Freight House  
Minneapolis, Minnesota

NOV 28 1978

Robert M. Frame III  
May 1978

Minnesota Historical Society

690 Cedar Street

St. Paul, Minnesota 55101

View of train shed, facing northwest

02458/2

AUG 9 1978





Chicago, Milwaukee, St. Paul &  
Pacific Railroad Co.: Station, Train  
Shed, and Freight House  
Minneapolis, Minnesota

Robert Frame III  
Circa 1925

Minnesota Historical Society  
690 Cedar Street

St. Paul, Minnesota 55101

View of south elevation of train shed,  
2278-B

NOV 28 1978  
AUG 9 1978



Chicago, Milwaukee, St. Paul &  
Pacific Railroad Co.: Station, Train  
Shed, and Freight House  
Minneapolis, Minnesota

Robert M. Frame III  
May 1978

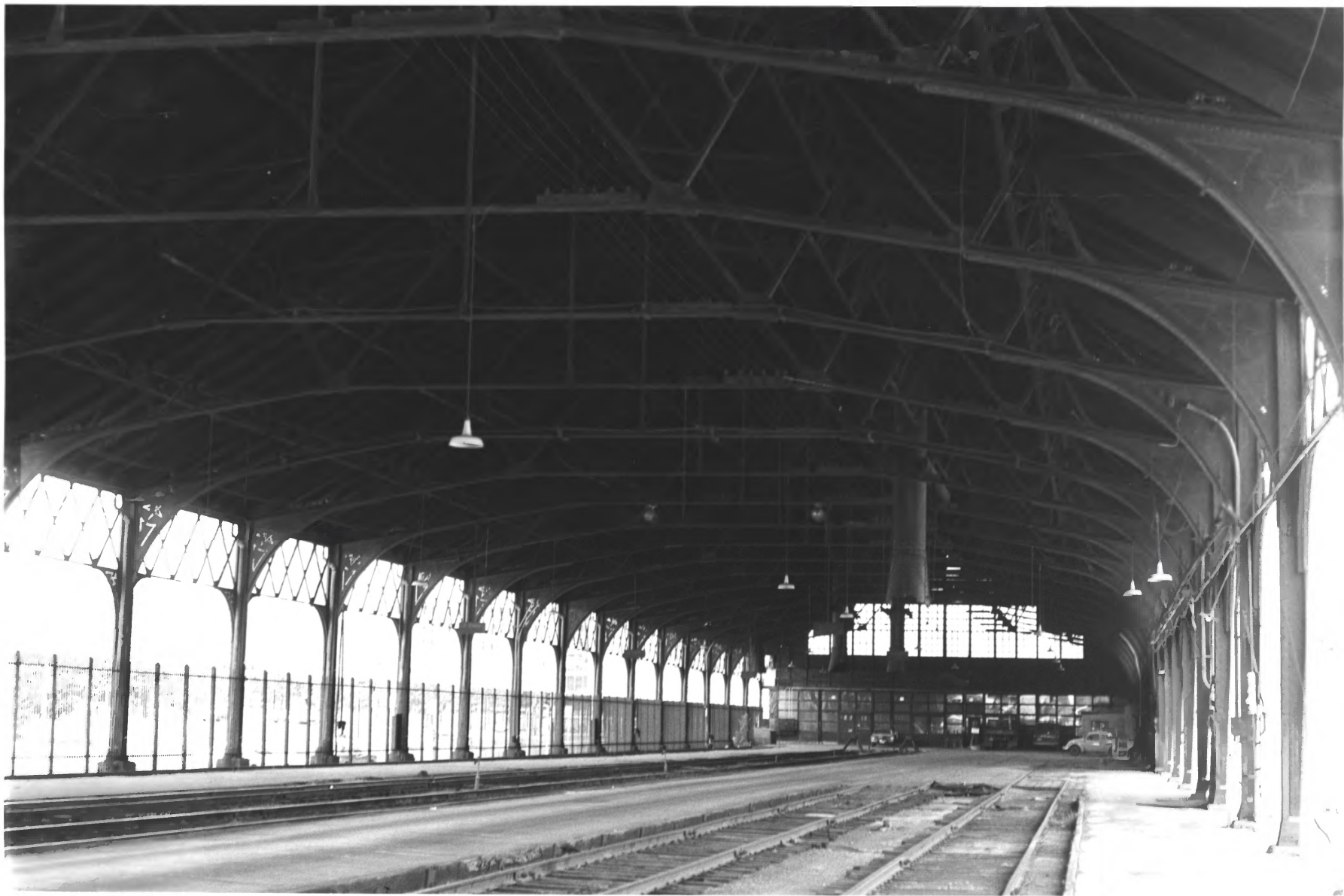
NOV 28 1978

Minnesota Historical Society  
590 Cedar Street  
St. Paul, Minnesota 55101

View of pierced metal ornamental  
brackets beneath longitudinal steel  
lattice beam along the side of the  
train shed.

02458/7

AUG 9 1978



Chicago, Milwaukee, St. Paul &  
Pacific Railroad Co.: Station, Train  
Shed, and Freight House

Minneapolis, Minnesota

NOV 28 1978

Robert M. Frame III

Minnesota Historical Society

690 Cedar Street

St. Paul, Minnesota 55101

View of train shed interior facing  
west toward station head house

02458/6

AUG 9 1978

12  
A



Chicago, Milwaukee, St. Paul &  
Pacific Railroad Co.: Station, Train  
Shed, and Freight House  
Minneapolis, Minnesota

Robert M. Frame III

NOV 28 1978

May 1978

Minnesota Historical Society

690 Cedar Street

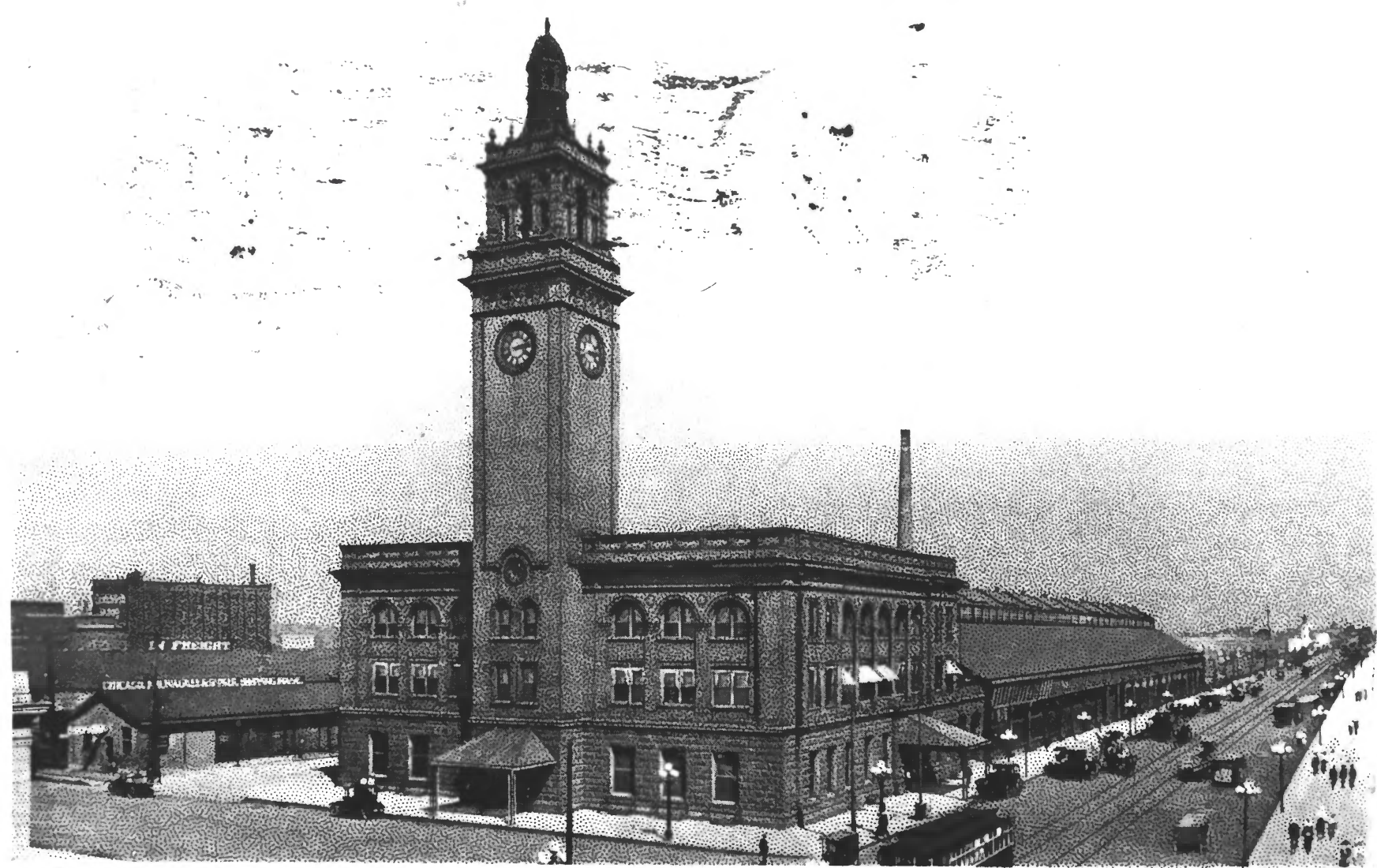
St. Paul, Minnesota 55101

View of train shed, facing west

02458/5

AUG 9 1978





C. M. & ST. P. DEPOT, MINNEAPOLIS, MINN.

Chicago, Milwaukee, St. Paul &  
Pacific Railroad Co.: Station, Train  
Shed, and Freight House  
Minneapolis, Minnesota  
Photographer unknown  
Circa 1910

NOV 28, 1978

Minnesota Historical Society  
690 Cedar Street  
St. Paul, Minnesota 55101  
General view of all structures,  
facing east  
26074

AUG 9 1978



MILWAUKEE  
ROAD

MILWAUKEE  
ROAD

←  
LEFT

Chicago, Milwaukee, St. Paul &  
Pacific Railroad Co.: Station, Train  
Shed, and Freight House

Minneapolis, Minnesota

Robert M. Frame III

NOV 28 1978

May 1978

Minnesota Historical Society

690 Cedar Street

St. Paul, Minnesota 55101

View of station head house, facing  
east

02459/10

AUG 9 1978



Chicago, Milwaukee, St. Paul &  
Pacific Railroad Co.: Station, Train  
Shed, and Freight House  
Minneapolis, Minnesota

Robert M. Frame III

May 1978

Minnesota Historical Society

690 Cedar Street

St. Paul, Minnesota 55101

View of station head house, facing  
west

02458/11

NOV 28 1978

AUG 9 1978



FREIGHT HOUSE

STREET CAR

GOLD MERCHANTS BUILDING

NO PARKING

NO PARKING

1872

Chicago, Milwaukee, St. Paul &  
Pacific Railroad Co.: Station, Train  
Shed, and Freight House

Minneapolis, Minnesota

Robert M. Frame III

NOV 28 1978

May 1978

Minnesota Historical Society

690 Cedar Street

St. Paul, Minnesota 55101

View of Freight house, facing east

02459/13

AUG 9 1978





Chicago, Milwaukee, St. Paul &  
Pacific Railroad Co.: Station, Train  
Shed, and Freight House  
Minneapolis, Minnesota

Robert M. Frame III

May 1978

NOV 8 1978

Minnesota Historical Society

690 Cedar Street

St. Paul, Minnesota 55101

View of east end offreight house,  
facing northeast

02459/14

AUG 9 1978



Chicago, Milwaukee, St. Paul &  
Pacific Railroad Co.: Station, Train  
Shed, and Freight House  
Minneapolis, Minnesota  
Photographer unknown  
Circa 1891

Minnesota Historical Society

690 Cedar Street

St. Paul, Minnesota 55101

View of present freight house,  
facing southwest.

20525

NOV 28 1978

AUG 9

1978



Chicago, Milwaukee, St. Paul &  
Pacific Railroad Co.: Station, Train  
Shed, and Freight House  
Minneapolis, Minnesota

Robert M. Frame III

**NOV 28 1978**

May 1978

Minnesota Historical Society

690 Cedar Street

St. Paul, Minnesota 55101

View of loading door on south side of  
freight house

02459/15

**AUG 9 1978**



Chicago, Milwaukee, St. Paul &  
Pacific Railroad Co.: Station, Train  
Shed, and Freight House  
Minneapolis, Minnesota

Robert M. Frame III

May 1978

AUG 9 1978

Minnesota Historical Society

690 Cedar Street

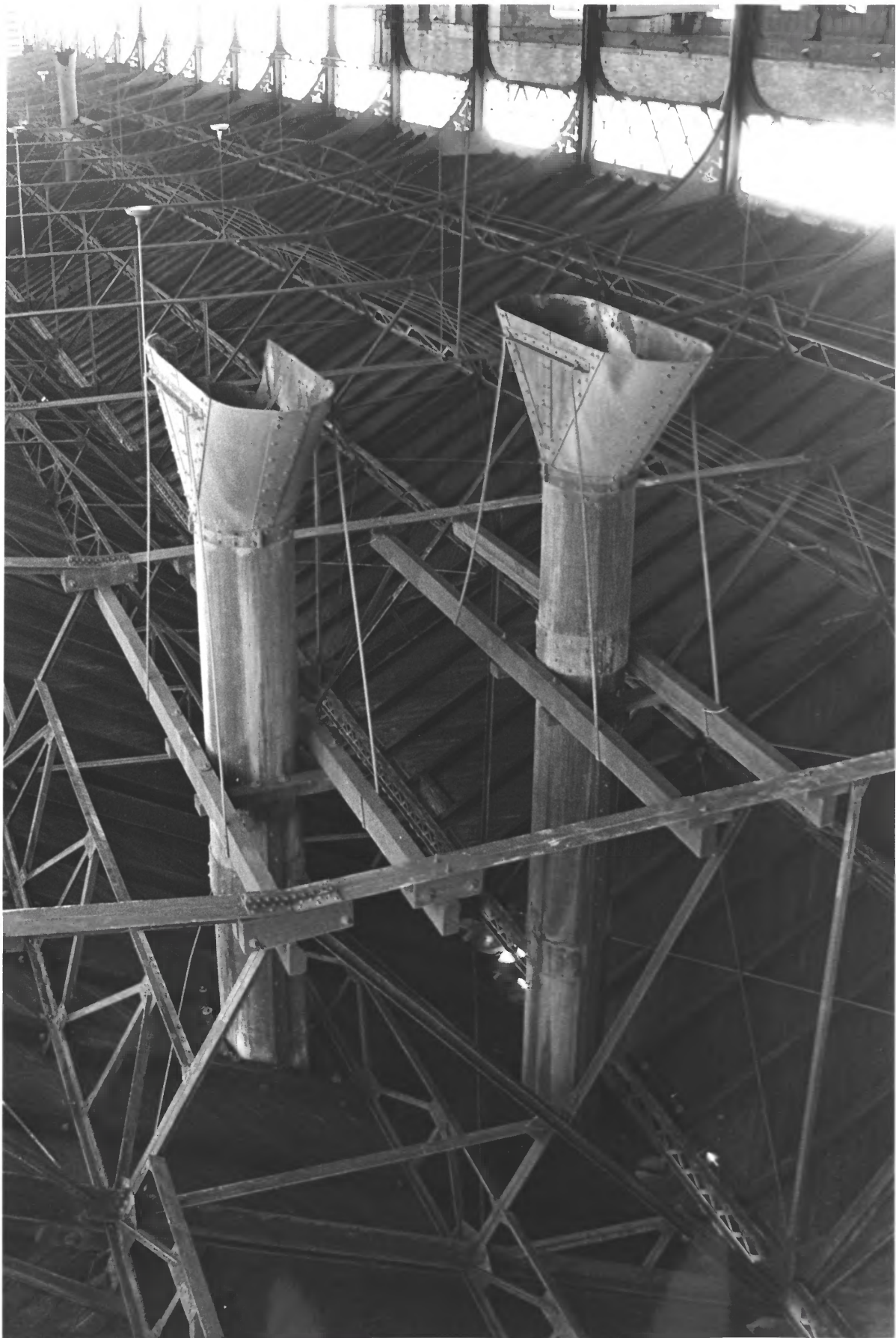
St. Paul, Minnesota 55101

View of detail of umbrella shed which  
extends behind the truss roof train  
shed.

02458/13

NOV 28 1978





Chicago, Milwaukee, St. Paul &  
Pacific Railroad Co.: Station, Train  
Shed, and Freight House  
Minneapolis, Minnesota

Robert M. Frame III

NOV 4 8 1978

May 1978

Minnesota Historical Society

690 Cedar Street

St. Paul, Minnesota 55101

View of locomotive smoke hoods inside  
the train shed

02378/18

AUG 9 1978