



NAME: Point Vicente Light ~~Station.~~

LOCATION: Rancho Palos Verde, CA

Los Angeles Co

PHOTOGRAPHER: Unk.

DATE OF PHOTO: Nov. 1977

OCT 31 1980

NEGATIVE: Unk.

DESCRIPTION: Aerial photo of entire station
looking southwest.

AUG 1 1 1980

114



NAME: Point Vicente Light Station.

LOCATION: Rancho Palos Verde, CA

PHOTOGRAPHER: Unk.

OCT 31 1980

DATE OF PHOTO: Aug 1979,

NEGATIVE: 11CG District Public Affairs Office

DESCRIPTION: Aerial photo of entire station
looking north.

AUG 11 1980

2/14



for long

NAME: Point Vicente Light ~~Station~~.

LOCATION: Palos Verde, CA

AUG 1 1 1980

PHOTOGRAPHER: PA3 Thomas Tranchell

DATE OF PHOTO: May 1980

NEGATIVE: 11CG District Public Affairs Office

DESCRIPTION: Lighthouse, Power House, and on extreme left Fog Signal House, looking south.

OCT 3 1 1980



Los Angeles CA

NAME: Point Vicente Light ~~Station.~~

LOCATION: Rancho Palos Verde, CA **AUG 11 1980**

PHOTOGRAPHER: PA3 Thomas Tranchell

DATE OF PHOTO: May 1980

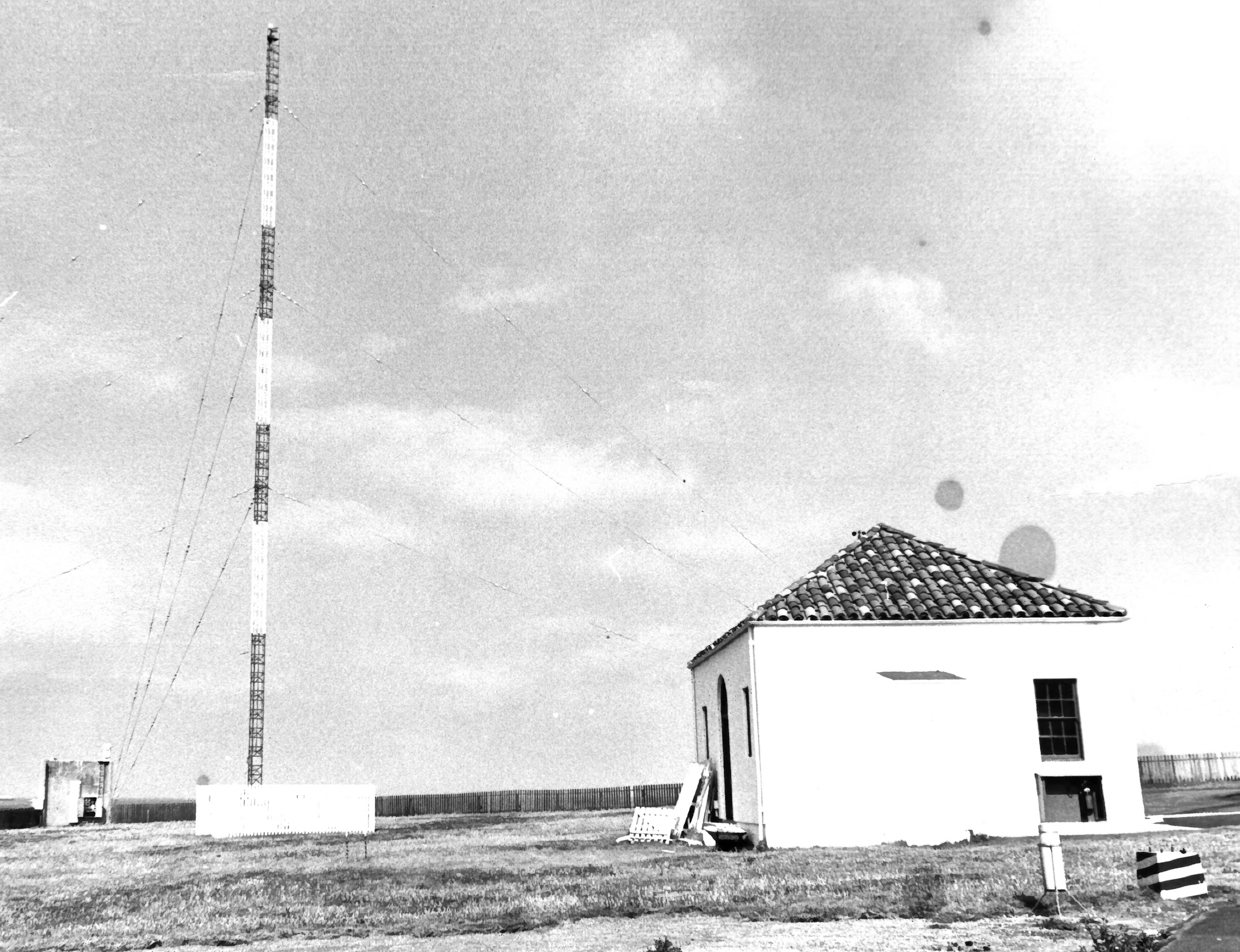
NEGATIVE: 11CG District Public Affairs Office

DESCRIPTION: Lighthouse, Power House on left,

Paint/Oil House on right, looking northwest.

4
117

~~OCT 31 1980~~



NAME: Point Vicente Light Station *Los Angeles Co*
LOCATION: Rancho Palos Verde, CA
PHOTOGRAPHER: PA3 Thomas Tranchell AUG 11 1980
DATE OF PHOTO: May 1980
NEGATIVE: 11CG District Public Affairs Office
DESCRIPTION: Fog Signal House and 119' radio
antenna, looking north.

OCT 31 1980

5/14



NAME: Point Vicente Light Station
LOCATION: Rancho Palos Verde, CA
PHOTOGRAPHER: PA3 Thomas Tranchell
DATE OF PHOTO: May 1980
NEGATIVE: 11CG District Public Affairs Office
DESCRIPTION: Lighthouse, Power House (middle),
Fog Signal House, looking north.

AUG 11 1980
Los Angeles Cal

OCT 31 1980



Los Angeles Co

NAME: Point Vicente Light ~~Station.~~

LOCATION: Rancho Palos Verde, CA

PHOTOGRAPHER: Unk.

DATE OF PHOTO: Nov 1973.

OCT 31 1980

NEGATIVE: Unk.

DESCRIPTION: Lighthouse Keeper's Quarters,
looking east.

7/14

AUG 11 1980



NAME: Point Vicente Light ~~Station~~ *San Angeles Co -*

LOCATION: Rancho Palos Verde, CA

PHOTOGRAPHER: Unk.

OCT 31 1980

DATE OF PHOTO: Nov 1973

NEGATIVE: Unk.

DESCRIPTION: First Assistant's ~~keepers~~ Quarters,
looking northeast

AUG 11 1980

8/14



NAME: Point Vicente Light Station.

San Angeles Co

LOCATION: Rancho Palos Verde, CA

PHOTOGRAPHER: Unk.

DATE OF PHOTO: Nov 1973.

OCT 31 1980

NEGATIVE: Unk.

DESCRIPTION: Second Assistant Keeper Quarters,
looking north.

AUG 1 1 1980

9/14



Los Angeles Co

NAME: Point Vicente Light Station.

LOCATION: Rancho Palos Verde, CA

AUG 1 1 1980

PHOTOGRAPHER: PA3 Thomas Tranchell

DATE OF PHOTO: May 1980

NEGATIVE: 11CG District Public Affairs Office

DESCRIPTION: Primary Keeper Quarters (right),
First Assistant Keeper Quarters (left), looking
northeast.

OCT 3 1 1980

11/14



For Angeles Co

NAME: Point Vicente Light ~~Station~~.

LOCATION: Rancho Palos Verde, CA **AUG 1 1 1980**

PHOTOGRAPHER: PA3 Thomas Tranchell

DATE OF PHOTO: May 1980

NEGATIVE: 11CG District Public Affairs Office

DESCRIPTION: Three car garage looking southeast.

OCT 3 1 1980

12/14



NAME: Point Vicente Light Station.

LOCATION: Rancho Palos Verde, CA

PHOTOGRAPHER: PA3 Thomas Tranchell

Los Angeles Co.

DATE OF PHOTO: May 1980

NEGATIVE: 11CG District Public Affairs Office

DESCRIPTION: First and Second lighthouse Keepers quarters looking north.

AUG 11 1980

13/11

OCT 31 1980



NAME: Point Vicente Light Station ~~Station~~ AUG 1 1 1980

LOCATION: Rancho Palos Verde, CA

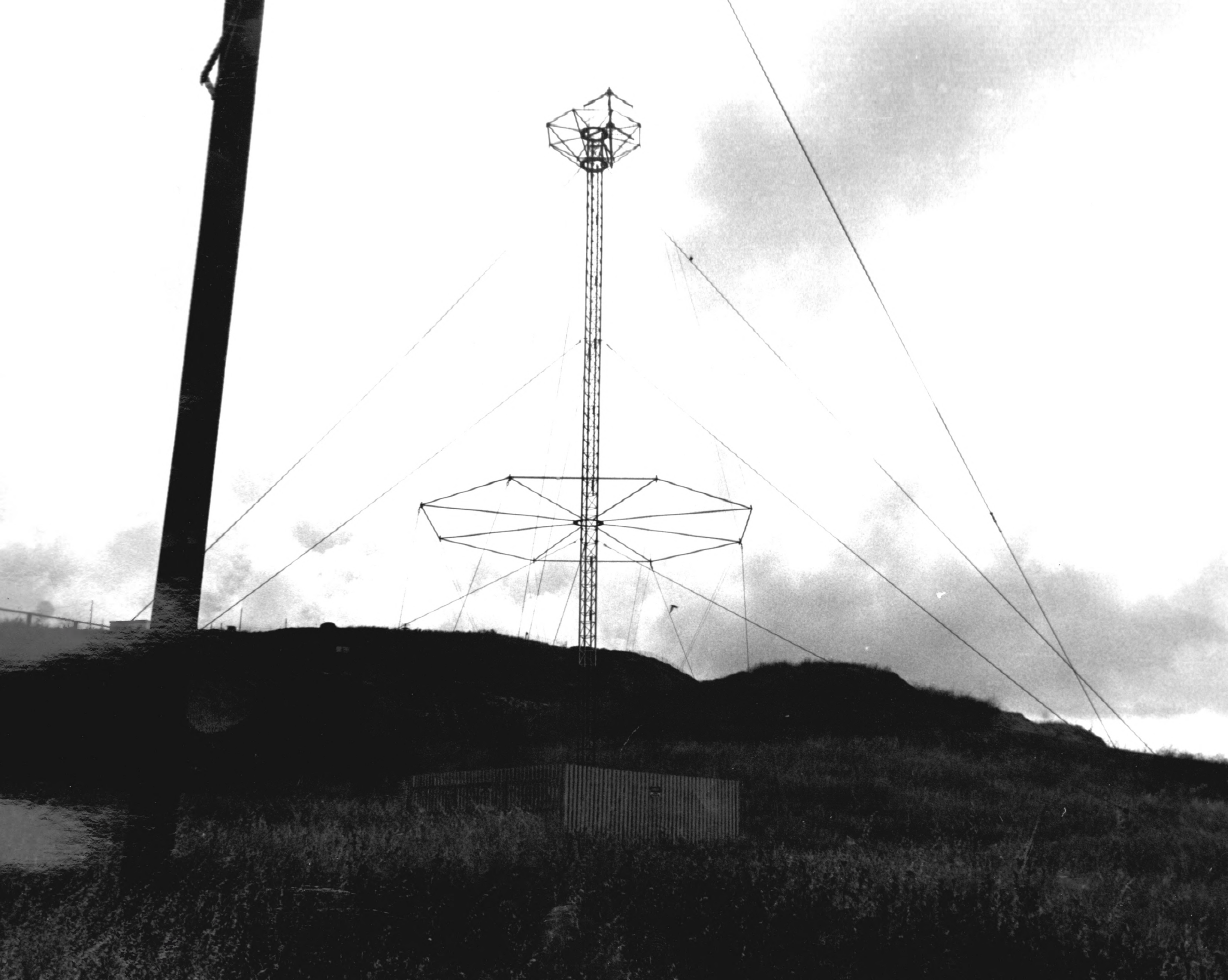
PHOTOGRAPHER: PA3 Thomas Tranchell

DATE OF PHOTO: May 1980

NEGATIVE: 11CG District Public Affairs Office

DESCRIPTION: View from top of highway looking
northwest, of entire light station.

OCT 3 1 1980



For Angeles Co

NAME: Point Vicente Light Station

LOCATION: Rancho Palos Verde, CA

AUG 1 1 1980

PHOTOGRAPHER: PA3 Thomas Tranchell

DATE OF PHOTO: May 1980

NEGATIVE: 11CG District Public Affairs Office

DESCRIPTION: One of two conical radio antennas

located on the station.

OCT 3 1 1980

15



Los Angeles Co.
NAME: Point Vicente Light ~~Station~~.

LOCATION: Rancho Palos Verde, CA AUG 11 1980

PHOTOGRAPHER: PA3 Thomas Tranchell

DATE OF PHOTO: May 1980

NEGATIVE: 11CG District Public Affairs Office

DESCRIPTION: Transit barracks (rear view),

looking northwest.

OCT 31 1980

14



NAME: Point Vicente Light Station

LOCATION: Rancho Palos Verde, CA

PHOTOGRAPHER: PA3 Thomas Tranchell

DATE OF PHOTO: May 1980

NEGATIVE: 11CG District Public Affairs Office

DESCRIPTION: Operations (far left) and Transit

(~~far~~ front) Barracks, front view looking northwest.

001 3 1 1980

Los Angeles

AUG 1 1 1980

17