



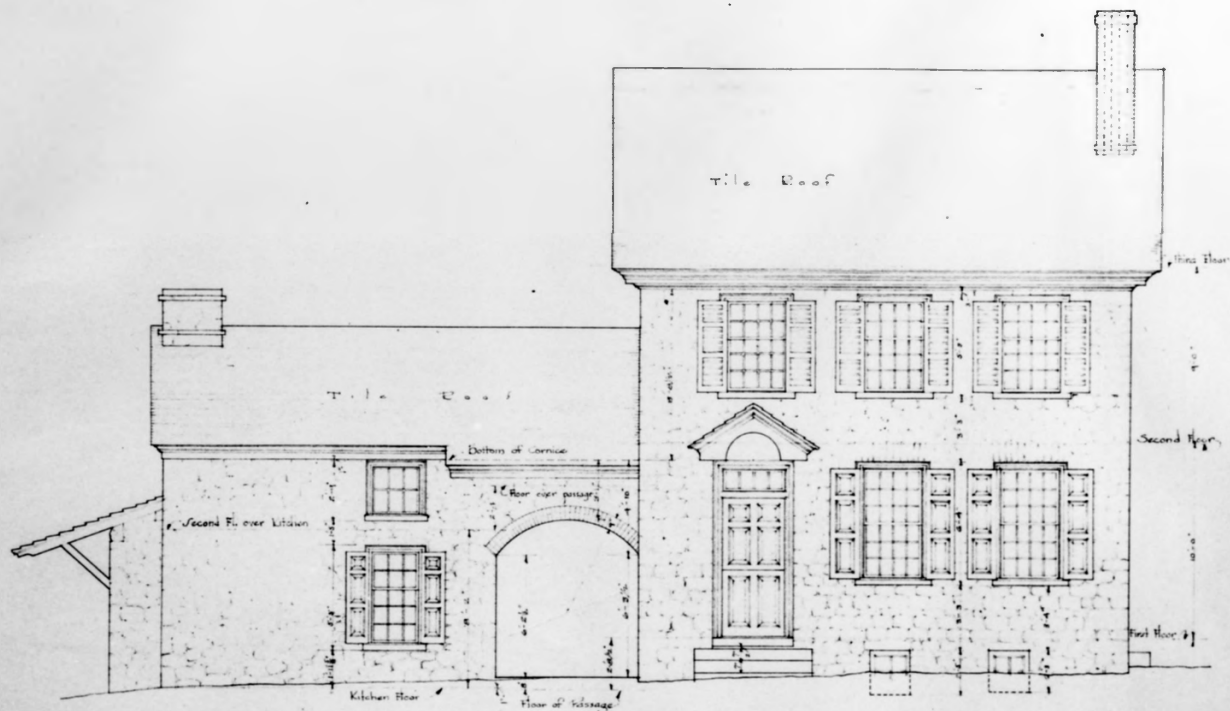
Washington's Headquarters (Potts House), Valley Forge, Pennsylvania

NPS Photo 1971



Washington's Headquarters (Potts House), Valley Forge, Pennsylvania

NPS Photo 1971



WEST ELEVATION
 Stonework on West Front of Main Building is Squared and Laid in Courses

Color True

SHEET NO
5
 SCALE $\frac{3}{4}$ " = 1'-0"
 MEASURED AND DRAWN BY
 L.H. GELBERG
 FEBRUARY, 1931

WASHINGTON'S
 VALLEY HEADQUARTERS
 FORGE

PREPARED BY THE COMMITTEE ON THE
 PRESERVATION OF HISTORIC MONUMENTS
 OF THE PHILADELPHIA CHAPTER OF THE
 AMERICAN INSTITUTE OF ARCHITECTS

Washington's Headquarters
Montgomery County, PA