

United States Department of the Interior
National Park Service

National Register of Historic Places Registration Form

This form is for use in nominating or requesting determinations for individual properties and districts. See instructions in National Register Bulletin, *How to Complete the National Register of Historic Places Registration Form*. If any item does not apply to the property being documented, enter "N/A" for "not applicable." For functions, architectural classification, materials, and areas of significance, enter only categories and subcategories from the instructions.



1. Name of Property

Historic name: First National Bank
Other names/site number: Exchange Bank of Skiatook
Name of related multiple property listing:
N/A
(Enter "N/A" if property is not part of a multiple property listing)

2. Location

Street & number: 123 East W.C. Rogers Boulevard
City or town: Skiatook State: Oklahoma County: Tulsa
Not For Publication: N/A Vicinity: N/A

3. State/Federal Agency Certification

As the designated authority under the National Historic Preservation Act, as amended,
I hereby certify that this X nomination request for determination of eligibility meets
the documentation standards for registering properties in the National Register of Historic
Places and meets the procedural and professional requirements set forth in 36 CFR Part 60.

In my opinion, the property X meets does not meet the National Register Criteria.
I recommend that this property be considered significant at the following
level(s) of significance:

 national statewide X local

Applicable National Register Criteria:

 X A B X C D

Signature of certifying official/Title: _____ Date 1-20-15
Deb Jackson
State or Federal agency/bureau or Tribal Government

OKISHPO

In my opinion, the property meets does not meet the National Register criteria.

Signature of commenting official: _____ Date _____

Title : _____ State or Federal agency/bureau or Tribal Government

First National Bank
Name of Property

Tulsa County, Oklahoma
County and State

4. National Park Service Certification

I hereby certify that this property is:

- entered in the National Register
 determined eligible for the National Register
 determined not eligible for the National Register
 removed from the National Register
 other (explain:) _____


Signature of the Keeper

3/4/2015
Date of Action

5. Classification

Ownership of Property

(Check as many boxes as apply.)

- Private:
Public – Local
Public – State
Public – Federal

Category of Property

(Check only **one** box.)

- Building(s)
District
Site
Structure
Object

First National Bank
Name of Property

Tulsa County, Oklahoma
County and State

Number of Resources within Property

(Do not include previously listed resources in the count)

Contributing	Noncontributing	
<u>1</u>	<u>0</u>	buildings
<u>0</u>	<u>0</u>	sites
<u>0</u>	<u>0</u>	structures
<u>0</u>	<u>0</u>	objects
<u>1</u>	<u>0</u>	Total

Number of contributing resources previously listed in the National Register 0

6. Function or Use

Historic Functions

(Enter categories from instructions.)

COMMERCE/TRADE: Financial Institution

Current Functions

(Enter categories from instructions.)

VACANT

First National Bank
Name of Property

Tulsa County, Oklahoma
County and State

7. Description

Architectural Classification

(Enter categories from instructions.)

LATE 19TH AND EARLY 20TH CENTURY REVIVALS: Classical Revival

Materials: (enter categories from instructions.)

Principal exterior materials of the property: STONE

Narrative Description

(Describe the historic and current physical appearance and condition of the property. Describe contributing and noncontributing resources if applicable. Begin with a **summary paragraph** that briefly describes the general characteristics of the property, such as its location, type, style, method of construction, setting, size, and significant features. Indicate whether the property has historic integrity.)

Summary Paragraph

The First National Bank building at 123 East W.C. Rogers Boulevard occupies a prominent corner lot at the center of the commercial core in Skiatook, Oklahoma. Buildings of a similar date, material and form comprise the surrounding downtown area. Constructed in 1911, the two-story two-part commercial block building has a concrete foundation, stone cladding and a flat roof. The primary elevations face south and east, with the entrance in the canted southeast corner. Original fenestration patterns are visible on the primary elevations, filled with non-historic windows and historic glass block transoms. Subtle Classical Revival ornament includes square pilasters with simple capitals, and a shaped parapet. On the interior the first floor commercial space features historic hex tile floors and metal bank vault doors. Both floors have non-historic partitions and exposed brick walls. Overall the building retains integrity and has experienced few alterations since the period of significance.

First National Bank
Name of Property

Tulsa County, Oklahoma
County and State

Narrative Description

Setting

The First National Bank is located in downtown Skiatook in the center of the downtown core. State Highway 20 (W.C. Rogers Boulevard) is the main thoroughfare through the town. Historic one- and two-story commercial block buildings and dense streetwalls of similar date, material, and form line each side in the historic core. West of this, modern free-standing commercial buildings and strip malls line W.C. Rogers Boulevard. North and south of downtown, development quickly changes to residential neighborhoods with some commercial businesses.

The building occupies the northwest corner at the intersection of East W.C. Rogers Boulevard and A Street. The primary elevations face east and south. Public sidewalks abut the building on these elevations. A vacant lot spans the west elevation. A gravel alley extends along the north elevation on the property.

Exterior

The two-story two-part commercial block building has a rectangular plan with a canted southeast corner facing the primary streets (*Photo 1*). It rises from a reinforced concrete foundation to a flat roof. Smooth stone clads the primary (south and east) brick walls. A cluster of one-story rectangular additions extends north from the north elevation. The additions are clad in smooth stucco and vertical siding and have shed roofs.

The main entrance fills the canted southeast corner (*Photos 1, 3*). Glass block surrounds the glazed aluminum-frame door. On the second story, a single opening filled with a non-historic double-hung vinyl window pierces the wall above the entrance.

The primary elevations face south and east. The south elevation has a single bay on the first story filled with paired storefront windows set in historic wood frames (*Photos 2, 3*). The storefront has a historic glass block transom and sits on concrete block-faced kneewalls. The east elevation has four bays (*Photos 1, 4*). Bays 1-3 have the same storefront configuration as the south elevation on the first story. An opaque panel fills the slightly smaller Bay 4. A tall narrow fixed window pierces the south side of this panel. A replacement wood pedestrian door pierces the north side. The same glass block transoms cap this bay.

On the second story, two stone mullions divide the wide openings into thirds. These openings define the single bay on the south elevation and Bays 1-3 on the east elevation. Bay 4 on the east elevation is narrower; it has a single mullion and paired windows. A simple dressed stone frame surrounds each opening. Varying combinations of narrow, non-historic four-over-four double-hung vinyl windows and dressed stone blocks fill each opening between the mullions. A continuous two-part stone sill spans the length of each elevation beneath the openings.

First National Bank
Name of Property

Tulsa County, Oklahoma
County and State

A decorative parapet with concrete coping caps the primary elevations. The parapet rises to an arch at the canted corner. "First National Bank" is inscribed into the stone beneath the arch. Between each bay and at the end of each elevation, rectangular blocks rise above the parapet, creating crenellations. Simple projecting vertical and horizontal bands adorn the wall beneath each block.

On the north elevation, a single non-historic paneled pedestrian door accesses one of the addition blocks on the first story (*Photo 5*). Extending north from the west side of this elevation, a wood staircase rises to a wood deck that continues over the one-story block to an entrance in the main building wall. A non-historic slab door fills the slightly projecting entrance. Left of this door, concrete masonry units faced with stucco fill two openings near the center of the elevation. The west elevation formerly abutted an adjacent building. It is void of fenestration.

Interior

A single commercial space occupies the first floor (*Photos 6, 7*). The west, south, and east walls have exposed brick. Plaster covers the north wall. There are two historic brick bank vaults in the northwest corner of the space accessed via historic metal doors. Historic white ceramic hexagonal floor tile with a decorative green border defines the historically public areas of the banking lobby (*Photo 8*).

INTEGRITY

The First National Bank has experienced few alterations since the period of significance and retains all aspects of integrity. The building is still in its original location and setting in downtown Skiatook, with the surrounding commercial block buildings of similar size, date, and material forming a continuous streetwall along the main commercial street. The design, materials and workmanship of the commercial block building remain intact. On the exterior, the distinct stone cladding, unique among commercial development of the period, sets the building apart from its surrounding context and convey its historic function as a bank. The two-part commercial block form, simple ornament and wide storefront openings remain intact. On the interior, the original vaults, hex tile floor in the historic bank space are extant. The First National Bank retains the feeling of and association with the First National Bank as a financial institution and the two-part commercial block form that characterized development in downtown Skiatook throughout the period of significance.

First National Bank
Name of Property

Tulsa County, Oklahoma
County and State

8. Statement of Significance

Applicable National Register Criteria

(Mark "x" in one or more boxes for the criteria qualifying the property for National Register listing.)

- A. Property is associated with events that have made a significant contribution to the broad patterns of our history.
- B. Property is associated with the lives of persons significant in our past.
- C. Property embodies the distinctive characteristics of a type, period, or method of construction or represents the work of a master, or possesses high artistic values, or represents a significant and distinguishable entity whose components lack individual distinction.
- D. Property has yielded, or is likely to yield, information important in prehistory or history.

Criteria Considerations

(Mark "x" in all the boxes that apply.)

- A. Owned by a religious institution or used for religious purposes
- B. Removed from its original location
- C. A birthplace or grave
- D. A cemetery
- E. A reconstructed building, object, or structure
- F. A commemorative property
- G. Less than 50 years old or achieving significance within the past 50 years

First National Bank
Name of Property

Tulsa County, Oklahoma
County and State

Areas of Significance

(Enter categories from instructions.)

ARCHITECTURE
COMMERCE

Period of Significance

1911 - 1950

Significant Dates

1911

Significant Person

(Complete only if Criterion B is marked above.)

N/A

Cultural Affiliation

N/A

Architect/Builder

Unknown

First National Bank
Name of Property

Tulsa County, Oklahoma
County and State

Statement of Significance Summary Paragraph (Provide a summary paragraph that includes level of significance, applicable criteria, justification for the period of significance, and any applicable criteria considerations.)

The First National Bank is locally significant for listing in the National Register of Historic Places under Criterion A for the area of COMMERCE and Criterion C for the area of ARCHITECTURE. Founded in 1904 as the Skiatook Bank, the First National Bank was the first bank in the town of Skiatook. The financial backing offered by a local bank supported the commercial expansion of Skiatook during its early years. The institution grew quickly, and constructed the building at 123 East W.C. Rogers Boulevard in 1911 to house its expanding business operations. It was the only bank in the town from around 1926 until at least 1956, supporting the financial development of the town. The building is an excellent example of a two-part commercial block building with restrained Classical Revival details. This building form defines the commercial core of downtown Skiatook, and was the ideal property type to house the growing financial institution. The distinct smooth stone exterior of the First National Bank distinguishes it from the predominantly brick facades that characterize the surrounding downtown commercial core. The building has experienced few changes since its construction and retains integrity as an expression of the evolution of architectural trends in downtown Skiatook. The period of significance begins in 1911 with the construction of the building and ends in 1950 when the bank removed from the building.

Narrative Statement of Significance (Provide at least **one** paragraph for each area of significance.)

Commerce

William C. Rogers founded the town of Skiatook in 1880 with a small general store two miles north of the current location. The location was designated as a post office in 1882. In 1904, the town moved to its present location in closer proximity to the new Midland Valley Railroad line in Osage County.¹ The official town plat was laid on December 18, 1904. Many businesses, such as a drug store and lumber company, soon opened in the area around the depot, with the resulting commercial core spanning the boundary between Osage and Tulsa counties.

Local financial institutions supported the commercial growth by providing capital for new business ventures and buildings. In 1904 a group of men, including William C. Rogers, established the Skiatook Bank (First National Bank) as the first bank in the newly-platted city. The bank also received the first deed in the new town on December 19, 1904, for the lot on which it built its new banking house.² The bank grew rapidly in its first years of operation. When the new building opened in 1905, the bank had a capital stock of \$5,000. By the following year, after consolidating with another local bank, the institution boasted combined stock of \$10,000. In 1911 the bank shareholders,

¹ Indian Nations Council of Governments, "Tulsa County Historic Sites," report prepared for the Tulsa County Historic Society, (July 1982), 84.

² The location of this first building is unknown.

First National Bank
Name of Property

Tulsa County, Oklahoma
County and State

including William C. Rogers and George Janeway, nationalized the bank. The named changed at this time to the First National Bank, and the growing company undertook construction of new facilities, located at the prominent northwest corner of Main (W.C. Rogers Boulevard) and A streets.³

The new First National Bank building occupied the prominent northwest corner at the intersection of Main and A streets. The 1913 Sanborn Fire Insurance Map shows it as one of only three stone buildings in the downtown area at this time among the surrounding buildings, the majority of which were brick. The two-part commercial block building was completely fireproof, built of concrete, steel, stone, and brick. Like other bank buildings of the period, the solid stone building evoked a sense of stability and permanence associated with the financial security of the institution. Additionally, the classical elements, such as the columns and shaped parapet, gave the building and bank a sense of history and longevity.

The surrounding development in downtown Skiatook continued to grow. As one of only two banks in the city, the First National Bank contributed the financial capital necessary for individuals to construct new buildings and establish businesses in the developing town. One- and two-story buildings with rectangular footprints characterized the surrounding blocks. Dense streetwalls lined the south side of Main Street east and west of A Street. The north side of Main Street was less dense, with only two other buildings on the same block as the First National Bank. Small clusters of commercial buildings lined the blocks of Main Street east of A Street. Beyond this core there were several free-standing commercial buildings, lumber manufacturing complexes, and several hotels and single-family dwellings. A variety of businesses occupied the downtown buildings, including a general store, a barber shop, and restaurants, though historic maps show only one bank, enhancing the significance of the First National Bank.⁴

In 1921, First National Bank had amassed capital of \$25,000, with total deposits of \$335,000.⁵ The bank had also undergone a change in leadership. Ed Shackelford was president and shared director responsibilities with Frank F. Cochran, a cashier at the bank. The First National Bank remained one of only two banks in Skiatook, with the other located in a stone building on the opposite, southeast, corner of A and Main streets. It was also one of the few stone buildings in the downtown district.

By the 1920s commercial development of Skiatook had progressed, and the downtown district had become denser. The 1923 Sanborn Map shows the commercial district now stretched farther to the east and west, with a greater concentration of one- and two-story commercial buildings along Main Street. A solid streetwall now lined the block anchored at its east end by the First National Bank. The streetwall on the south side of Main Street retained a similar density as in 1913. New streetwalls and

³ C.H. Cleveland & G.B. Epperson, comps. and eds, *Skiatook, 1872 to 1921*, (Tulsa, OK: Mid-West Printing Co., 1921). Main Street was renamed W.C. Rogers Boulevard after the period of significance.

⁴ Sanborn Map and Publishing Company, Ltd, Sanborn Fire Insurance Map of Skiatook, Oklahoma, (New York: Sanborn Map Company, 1913).

⁵ Indian Nations Council of Governments.

First National Bank

Name of Property

Tulsa County, Oklahoma

County and State

free-standing buildings characterized the commercial center east of Broadway and west of Osage Avenue. The diverse array of businesses included a dry goods store, auto sales, and a hardware store. Beyond the commercial district were residential neighborhoods dotted with some free-standing commercial buildings, hotels, and the lumber company.

The First National Bank continued to evolve during the 1930s. In the 1920s Skiatook resident Ed Fox became associated with the First National Bank. Fox was a prominent local businessman, who built the prominent Fox Hotel (201-203 East W.C. Rogers Boulevard) in 1923 and served as mayor of Skiatook from 1925-1931. By 1930, Fox and his son, Alex, had purchased the bank and renamed it the Exchange Bank of Skiatook. Fox led the company as bank president until his death in 1940. Alex Fox retained ownership and served on the Board of Directors until he sold the bank during World War II.⁶

The 1935 Sanborn Map shows the footprints and density of buildings in the area largely unchanged from 1923, although new businesses occupied many of the buildings. Most notably, the other bank building was now a drug store, leaving the First National Bank as the only financial institution in the town. It prominently advertised in on the covers of the 1936, 1945 and 1949 city directories, attesting to its importance in the community.⁷ In a photograph dated to 1940, the First National Bank building appears much as it does today, with the same restrained ornament, rhythm of openings across the south and east elevations, and glass block in the transoms and main entrance surround.

In 1950 the bank had moved into a new, Modern one-story building at the corner of Broadway and Second streets, however, it remained the only bank in Skiatook until at least 1956.⁸ After this time, the building remained a commercial space, housing Auto Parts of Skiatook in 1982. Most recently it housed the Bank Shots Sports Grill. It is currently vacant.

For nearly forty years the First National Bank Building made a significant contribution to the commercial environment of Skiatook. The prominent institution located in the building played a vital role in Skiatook's financial security and development. As the only bank in the city for several decades, First National Bank provided the financial capitol that enabled the commercial and physical development of the community as it grew from a railroad town into a small city.

Architecture

The two-part commercial block form prevailed in commercial districts throughout the country from the late nineteenth well into the twentieth century. This property type is usually two- to four- stories in height with two vertical sections separated by a defined horizontal division that organizes the primary elevation. The historic interior functions of the building often aligned with these same

⁶ *Skiatook, Oklahoma: Gateway to the Osage Nation, 1872-1999*, (Skiatook, OK: Skiatook Museum. 1999), 117.

⁷ *Telephone Directory: Skiatook, Sperry*, (February 1936, March 1945), Skiatook Sperry Telephone Company. *Skiatook Oklahoma Telephone Directory*, (January 1949), Southwestern Bell Telephone Company.

⁸ This building is no longer extant.

First National Bank
Name of Property

Tulsa County, Oklahoma
County and State

exterior divisions. The first story typically features wide storefront openings for public commercial or office space. The upper stories have a distinct unified treatment with more architectural embellishment on the exterior and private spaces, such as meeting rooms, offices, lodging or apartments on the interior.⁹ The two-part commercial block became the preferred property type for buildings such as hotels, fraternal halls, and a wide variety of commercial businesses. As displayed by the First National Bank, financial institutions often located on street corners and expressed a more-refined exterior than other types of businesses. They exhibited less differentiation between the two upper and lower stories, affecting a more harmonious facade.¹⁰

The standard form of the two-part commercial block allowed both architects and vernacular builders a means of arranging a building's façade, while providing freedom to apply a variety of architectural ornament. After the 1893 World's Columbian Exposition in Chicago popularized classical Greek and Roman architecture, these historic forms began to permeate American architecture. This led to a surge in revival style architecture based on historical precedents, such as the Classical Revival style. After 1900 there was also a reaction to the exuberance of the earlier Victorian and Beaux Arts periods that resulted in a more-streamlined expression of architectural ornament on commercial buildings. Prevailing compositions were balanced with simpler facades and fewer classical elements.¹¹

The minimal architectural detail of the First National Bank follows the trend for simplified designs. Embellishment, reserved for the decorative parapet and framed window openings, subtly alludes to the Classical Revival style, while still expressing the underlying two-part commercial block form on both of the street-facing elevations. The solidity of the austere stone façade communicates the permanence and security of the financial institution for which the building was constructed.

⁹ Richard Longstreth, *The Buildings of Main Street: A Guide to Commercial Architecture*, (Washington D.C.: The Preservation Press, 1987), 24.

¹⁰ Longstreth, 31.

¹¹ Longstreth, 39.

First National Bank
Name of Property

Tulsa County, Oklahoma
County and State

9. Major Bibliographical References

Bibliography (Cite the books, articles, and other sources used in preparing this form.)

Cleveland, C.H. & G.B. Epperson, comps. and eds. *Skiatook, 1872 to 1921*. Tulsa, OK: Mid-West Printing Co., 1921.

Indian Nations Council of Governments. "Tulsa County Historic Sites," report prepared for the Tulsa County Historic Society. July 1982.

Longstreth, Richard. *The Buildings of Main Street: A Guide to Commercial Architecture*. Washington D.C.: The Preservation Press, 1987.

Sanborn Map and Publishing Company, Ltd. Sanborn Fire Insurance Map of Skiatook, Oklahoma. New York: Sanborn Map Company, 1913, 1923.

Skiatook, Oklahoma: Gateway to the Osage Nation, 1872-1999. Skiatook, OK: Skiatook Museum, 1999.

Skiatook Oklahoma Telephone Directory. (January 1949). Southwestern Bell Telephone Company.

Telephone Directory: Skiatook, Sperry. (February 1936). Skiatook Sperry Telephone Company.

Telephone Directory: Skiatook, Sperry. (March 1945). Skiatook Sperry Telephone Company.

Previous documentation on file (NPS):

preliminary determination of individual listing (36 CFR 67) has been requested

previously listed in the National Register

previously determined eligible by the National Register

designated a National Historic Landmark

recorded by Historic American Buildings Survey # _____

recorded by Historic American Engineering Record # _____

recorded by Historic American Landscape Survey # _____

Primary location of additional data:

State Historic Preservation Office

Other State agency

First National Bank
Name of Property

Tulsa County, Oklahoma
County and State

Federal agency

Local government

University

Other

Name of repository: Skiatook Museum

Historic Resources Survey Number (if assigned): _____

10. Geographical Data

Acreeage of Property less than one acre

Use either the UTM system or latitude/longitude coordinates

Latitude/Longitude Coordinates

Datum if other than WGS84: _____

(enter coordinates to 6 decimal places)

1. Latitude: 36.368734 Longitude: -96.000215

2. Latitude: Longitude:

3. Latitude: Longitude:

4. Latitude: Longitude:

Verbal Boundary Description (Describe the boundaries of the property.)

The nominated property occupies Block 11, Lot 24 of Skiatook Original Town plat, Skiatook, Tulsa County, Oklahoma.

Boundary Justification (Explain why the boundaries were selected.)

The boundary encompasses the parcel of land historically associated with the resource.

First National Bank
Name of Property

Tulsa County, Oklahoma
County and State

11. Form Prepared By

name/title: Rachel Nugent, Associate; Lauren Rieke, Historic Preservation Specialist
organization: Rosin Preservation
street & number: 215 W. 18th Street #150
city or town: Kansas City state: MO zip code: 64108
e-mail lauren@rosinpreservation.com
telephone: 816-472-4950
date: October 2014

Additional Documentation

Submit the following items with the completed form:

- **Maps:** A **USGS map** or equivalent (7.5 or 15 minute series) indicating the property's location.
- **Sketch map** for historic districts and properties having large acreage or numerous resources. Key all photographs to this map.
- **Additional items:** (Check with the SHPO, TPO, or FPO for any additional items.)

Photographs

Submit clear and descriptive photographs. The size of each image must be 1600x1200 pixels (minimum), 3000x2000 preferred, at 300 ppi (pixels per inch) or larger. Key all photographs to the sketch map. Each photograph must be numbered and that number must correspond to the photograph number on the photo log. For simplicity, the name of the photographer, photo date, etc. may be listed once on the photograph log and doesn't need to be labeled on every photograph.

First National Bank
Name of Property

Tulsa County, Oklahoma
County and State

Photo Log

Name of Property: First National Bank

City or Vicinity: Skiatook

County: Tulsa

State: Oklahoma

Photographer: Elizabeth Rosin

Date Photographed: February 2014

Description of Photograph(s) and number, include description of view indicating direction of camera:

- 1 of 10. Southeast corner, view northwest.
- 2 of 10. Southwest corner, view northeast.
- 3 of 10. South elevation, view north.
- 4 of 10. East elevation, view west.
- 5 of 10. Northeast corner, view southwest.
- 6 of 10. First floor, view north.
- 7 of 10. First floor, view southeast.
- 8 of 10. First floor, historic tile floor.
- 9 of 10. Second floor, view southeast.
- 10 of 10. Second floor, view northeast.

Figure Log

Figure 1: Site Map. *Source: ArcGIS 2013.*

Figure 2: Contextual Map. *Source: ArcGIS 2013.*

Figure 3: Photo Map, First Floor, Exterior.

Figure 4: Photo Map, Second Floor.

Figure 5: Historic Photo, c. 1940. *Source: Skiatook, Oklahoma: Gateway to the Osage Nation.*

Figure 6: Front cover advertisement from the 1936 city directory.

Paperwork Reduction Act Statement: This information is being collected for applications to the National Register of Historic Places to nominate properties for listing or determine eligibility for listing, to list properties, and to amend existing listings. Response to this request is required to obtain a benefit in accordance with the National Historic Preservation Act, as amended (16 U.S.C. 460 et seq.).

Estimated Burden Statement: Public reporting burden for this form is estimated to average 100 hours per response including time for reviewing instructions, gathering and maintaining data, and completing and reviewing the form. Direct comments regarding this burden estimate or any aspect of this form to the Office of Planning and Performance Management, U.S. Dept. of the Interior, 1849 C. Street, NW, Washington, DC.

First National Bank
Name of Property

Tulsa County, Oklahoma
County and State

Figure 1: Site Map. *Source: ArcGIS 2013.*



First National Bank
Name of Property

Tulsa County, Oklahoma
County and State

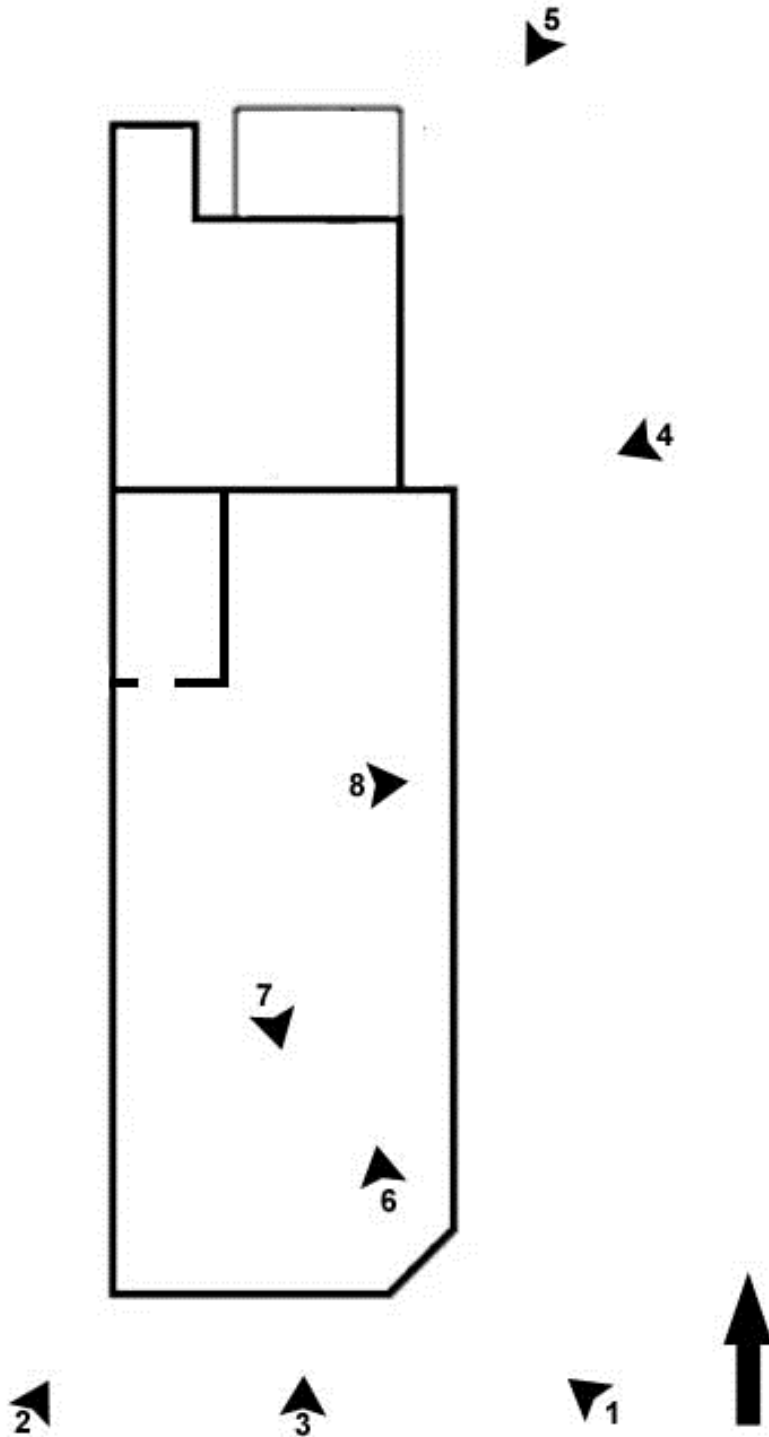
Figure 2: Contextual Map. *Source: ArcGIS 2013.*



First National Bank
Name of Property

Tulsa County, Oklahoma
County and State

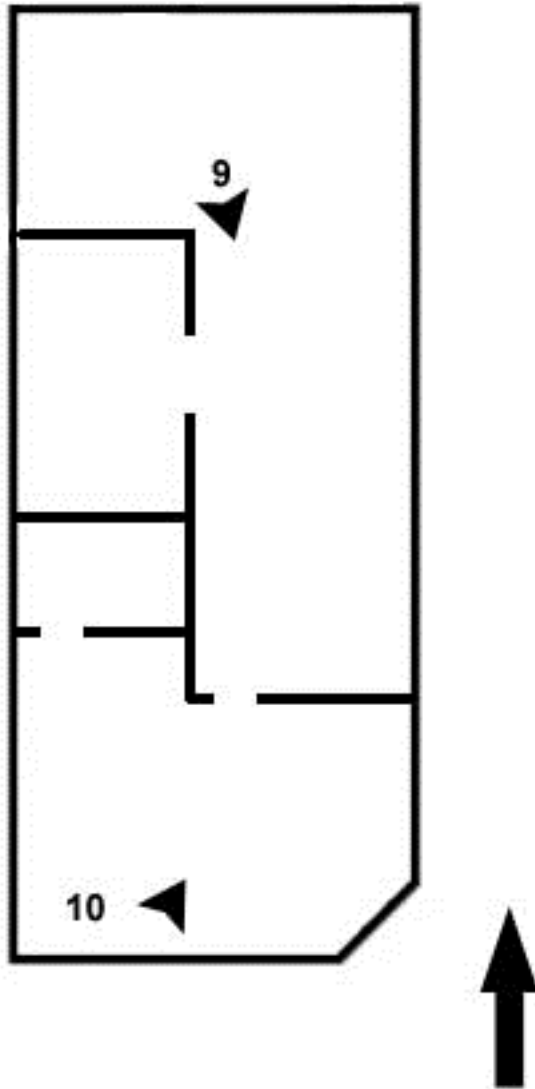
Figure 3: Photo Map, First Floor, Exterior.



First National Bank
Name of Property

Tulsa County, Oklahoma
County and State

Figure 4: Photo Map, Second Floor.



First National Bank
Name of Property

Tulsa County, Oklahoma
County and State

Figure 5: Historic Photo, c. 1940. *Source: Skiatook, Oklahoma: Gateway to the Osage Nation.*



Figure 6: Front cover advertisement from the 1936 city directory.





A STREET





FOOTBALL
MARGARITAS





WALK

MADE WITH *Sweet*





A STREET

Bullington
City





SONIC
America's Drive-In
20 OZ FOAM CUPS
500 / CASE

SONIC
America's Drive-In
20 OZ FOAM CUPS
500 / CASE

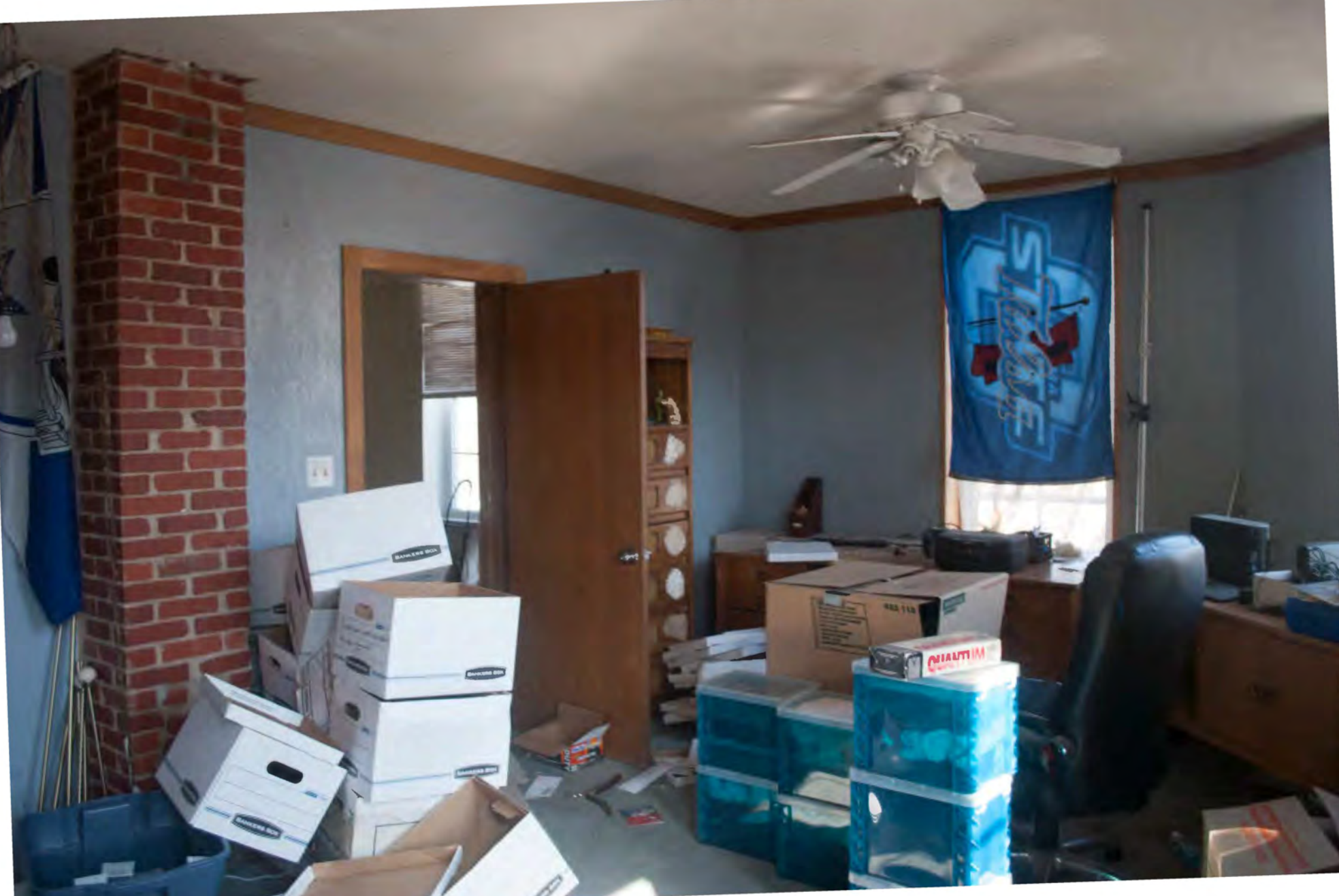
EXIT

EXIT









UNITED STATES DEPARTMENT OF THE INTERIOR
NATIONAL PARK SERVICE

NATIONAL REGISTER OF HISTORIC PLACES
EVALUATION/RETURN SHEET

REQUESTED ACTION: NOMINATION

PROPERTY First National Bank
NAME:

MULTIPLE
NAME:

STATE & COUNTY: OKLAHOMA, Tulsa

DATE RECEIVED: 1/23/15 DATE OF PENDING LIST: 2/13/15
DATE OF 16TH DAY: 3/02/15 DATE OF 45TH DAY: 3/10/15
DATE OF WEEKLY LIST:

REFERENCE NUMBER: 15000066

REASONS FOR REVIEW:

APPEAL: N DATA PROBLEM: N LANDSCAPE: N LESS THAN 50 YEARS: N
OTHER: N PDIL: Y PERIOD: N PROGRAM UNAPPROVED: N
REQUEST: Y SAMPLE: N SLR DRAFT: N NATIONAL: N

COMMENT WAIVER: N

 ACCEPT RETURN REJECT DATE

ABSTRACT/SUMMARY COMMENTS:

The First National Bank is locally significant under National Register Criteria A and C in the areas of Commerce and Architecture. The stone-clad, two-story, two-part commercial block was built in 1911 and served as the home of Skiatook's most significant early twentieth century financial institution. The building's simple two-part configuration reflected the common construction forms of early twentieth century commercial operations in small towns like Skiatook, while the building's smooth stone cladding and restrained classical detailing marked it as a prominent and stable pillar of local commerce. The bank's operations were vital to local community growth and development during the historic period 1911 to 1950.

RECOM./CRITERIA Accept Criteria A+C
REVIEWER Paul R. Lusignea DISCIPLINE HISTORIAN
TELEPHONE _____ DATE 3/4/2015

DOCUMENTATION see attached comments Y/N see attached SLR Y/N Y

If a nomination is returned to the nominating authority, the nomination is no longer under consideration by the NPS.

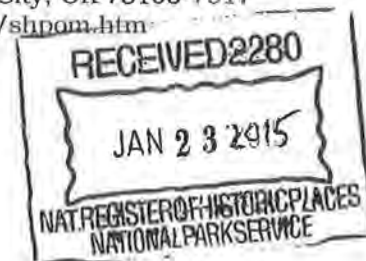


Oklahoma Historical Society

Founded May 27, 1893

State Historic Preservation Office

Oklahoma History Center • 800 Nazih Zuhdi Drive • Oklahoma City, OK 73105-7917
(405) 521-6249 • Fax (405) 522-0816 • www.okhistory.org/shpo/shpom.htm



January 20, 2015

J. Paul Loether, Deputy Keeper and Chief
National Register and National Historic Landmark Programs
National Park Service 2280, 8th floor
1201 "I" (Eye) Street, NW
Washington D.C. 20005

Dear Mr. Loether:

We are pleased to transmit five National Register of Historic Places nominations for Oklahoma properties. The nominations are for the following properties:

First Church of Christ Scientist, Ponca City, Kay County
St. John Baptist Church and Rectory, Ponca City, Kay County
McAlester Downtown Historic District, McAlester, Pittsburg County
First National Bank, Skiatook, Tulsa County
Oklahoma Iron Works/Bethlehem Supply Company Building, Tulsa County

The member of the Historic Preservation Review Committee (state review board), professionally qualified in the fields of prehistoric archeology was absent from the public meeting at which each of these nominations was considered and the recommendation to the State Historic Preservation Officer was formulated. However, the member possessing the requisite professional qualifications for evaluation of each nominated property was present and participated in the recommendation's formulation

We look forward to the results of your review. If there may be any questions, please do not hesitate to contact either Lynda S. Ozan of my staff or myself.

Sincerely,

Melvena Heisch
Deputy State Historic
Preservation Officer

MKH:iso

Enclosures