



Photo #1 of 56

South Bottoms Historic District
Lincoln, Nebraska

Photo by Janet Jeffries Spencer, 1986
Nebraska State Historical Society
8603/26:18

Cooper Park looking north-northeast toward
Park School (C7-277). View shows terracing
and shelters.



Photo #2 of 56

South Bottoms Historic District
Lincoln, Nebraska

Photo by Janet Jeffries Spencer, 1986
Nebraska State Historical Society
8603/26:15

View looking southwest from Cooper Park
toward residential area along 6th Street
between D and E Streets. Friedens
Evangelical Lutheran Church at left.



Photo #3 of 56

South Bottoms Historic District
Lincoln, Nebraska

Photo by Janet Jeffries Spencer, 1986
Nebraska State Historical Society
8603/26:14

View looking north up 5th Street from alley between C and D Streets. Showing railroad tracks in center of roadway. Shows (left to right) sites C7-253, 252, 251; 502, 508 and 510 D Street.



Photo #4 of 56

South Bottoms Historic District
Lincoln, Nebraska

Photo by Janet Jeffries Spencer, 1986
Nebraska State Historical Society
8603/25:27

View looking northwest toward 3rd Street.
Railroad crossing at C Streets. Shows
site C7-400; 300 C Street.



Photo #6 of 56

South Bottoms Historic District
Lincoln, Nebraska

Photo by Janet Jeffries Spencer, 1986
Nebraska State Historical Society
8603/26:6

View looking southeast along south side of
D Street from corner of 2nd and D Streets.
Shows (right to left) sites C7-423, 424,
425, 426, etc.; 209-227 D Street.



Photo #7 of 56

South Bottoms Historic District
Lincoln, Nebraska

Photo by Janet Jeffries Spencer, 1986
Nebraska State Historical Society
8603/2:23a

View looking southwest along south side of
G Street from corner of 1st and G. Shows
(left to right) sites B7-44, 43, 42, etc.;
103-113 W. G Street.



Photo #9 of 56

South Bottoms Historic District
Lincoln, Nebraska

Photo by Janet Jeffries Spencer, 1986
Nebraska State Historical Society
8603/2:36a

View looking northeast along north side of
J Street from corner of 1st and J Streets.
Shows (left to right) sites C8-103, 104, 105,
106; 104-130 J Street.



Photo #10 of 56

South Bottoms Historic District
Lincoln, Nebraska

Photo by Janet Jeffries Spencer, 1986
Nebraska State Historical Society
8603/3:7

View looking northeast along east side of
1st Street and north side of K Street.
Shows sites C8-87, 88, 89, 90, 91; 430 S.
1st, 104-120 K Street.



Photo #11 of 56

South Bottoms Historic District
Lincoln, Nebraska

Photo by Janet Jeffries Spencer, 1986
Nebraska State Historical Society
8603/5:29

North (front) and east facades of site
C7-193, Alles store building, 1119 S. 6th
Street. Shows east facade of garage.

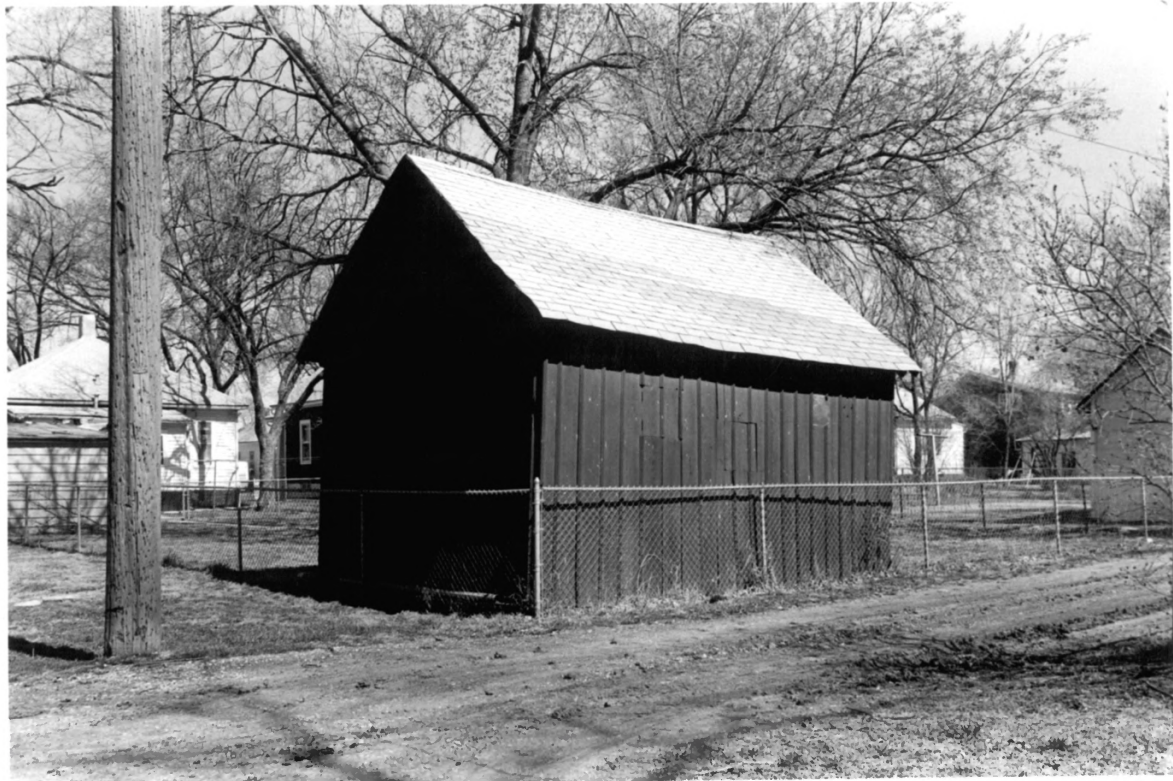


Photo #12 of 56

South Bottoms Historic District
Lincoln, Nebraska

Photo by Janet Jeffries Spencer, 1986
Nebraska State Historical Society
8603/6:32

Good example of frame board and batten
barn, south and west (gable) facades,
site C7-335; 401 B Street



Photo #13 of 56

South Bottoms Historic District
Lincoln, Lancaster County, Nebraska

Photo by Janet Jeffries Spencer, 1986
Nebraska State Historical Society
8603/26:11

View of Schissler-Stasheim barn, north and
west (gable) facades, site C7-186; 502 C
Street.



Photo #14 of 56

South Bottoms Historic District
Lincoln, Lancaster County, Nebraska

Photo by Janet Jeffries Spencer, 1986
Nebraska State Historical Society
8603/2:10a

Excellent example of H. Schmall summer kitchen, rear view, south (gable) and west facades, site B7-18; 215 W. F Street.



Photo #15 of 56

South Bottoms Historic District
Lincoln, Lancaster County, Nebraska

Photo by Janet Jeffries Spencer, 1986
Nebraska State Historical Society
8603/25: 17

View of H. J. Amen barn and sheds south and
east (gable) facades, site C7-522; 201 F
Street.

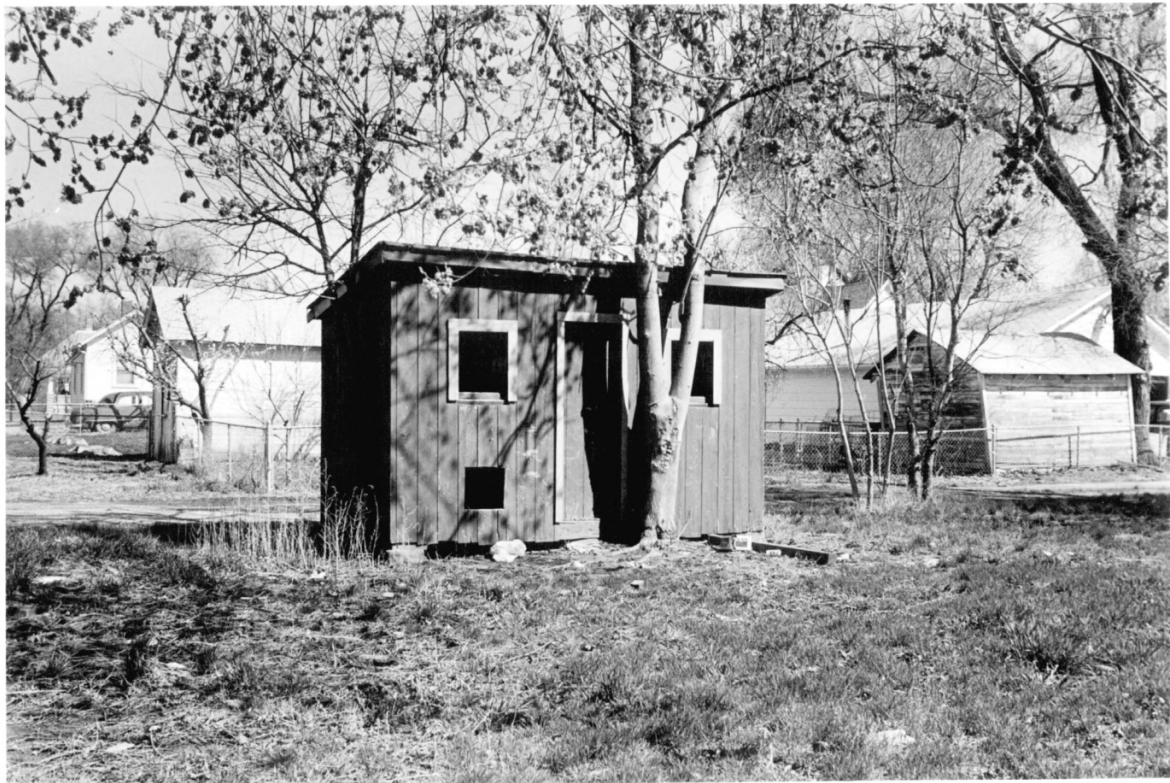


Photo #16 of 56

South Bottoms Historic District
Lincoln, Lancaster County, Nebraska

Photo by Janet Jeffries Spencer, 1986
Nebraska State Historical Society
8603/26:10

Chicken house, south (front) and west
facades, site C7-346; 400 B Street.



Photo #17 of 56

South Bottoms Historic District
Lincoln, Lancaster County, Nebraska

Photo by Janet Jeffries Spencer, 1986
Nebraska State Historical Society
8603/5:30

H. J. Amen house, built ca. 1918, north
(front) and west facades, site C7-15;
601 D Street.



Photo #18 of 56

South Bottoms Historic District
Lincoln, Lancaster County, Nebraska

Photo by Janet Jeffries Spencer, 1986
Nebraska State Historical Society
8603/3:29

Park Elementary School, built ca. 1920,
south (front) and east facades, site C7-277;
714 F Street.



Photo #19 of 56

South Bottoms Historic District
Lincoln, Lancaster County, Nebraska

Photo by Janet Jeffries Spencer, 1986
Nebraska State Historical Society
8603/2:2a

First German Congregational Church, built
1920, south (front) and west facades, site
B7-27, 100 W. F Street.



Photo #20 of 56

South Bottoms Historic District
Lincoln, Lancaster County, Nebraska

Photo by Janet Jeffries Spencer, 1986
Nebraska State Historical Society
8603/5:34

Friedens Lutheran Church, built 1907, south
and east (front) facades, site C7-2; 6th
and D Streets.



Photo #21 of 56

South Bottoms Historic District
Lincoln, Lancaster County, Nebraska

Photo by Janet Jeffries Spencer, 1986
Nebraska State Historical Society
8603/4:18

Ebenezer United Church of Christ, built
1926, north (front) and west facades,
site C7-81; 801 B Street.



Photo #22 of 56

South Bottoms Historic District
Lincoln, Lancaster County, Nebraska

Photo by Janet Jeffries Spencer, 1986
Nebraska State Historical Society
8603/4:2

German Evangelical Congregational Zion
Church, built 1927. South (front) and east
facades, site C7-25; 9th and D Streets.



Photo #23 of 56

South Bottoms Historic District
Lincoln, Lancaster County, Nebraska

Photo by Janet Jeffries Spencer, 1986
Nebraska State Historical Society
8603/2:28a

Immanuel Evangelical Lutheran Church and
school, built 1910, north (front) and east
facades, site C7-21, 8th and D Streets.



Photo #24 of 56.

South Bottoms Historic District
Lincoln, Lancaster County, Nebraska

Photo by Janet Jeffries Spencer, 1986
Nebraska State Historical Society
8603/5:5

J. J. Lebsack store building, built 1912,
south (front) facade, site C7-102; 710 B
Street.



Photo #25 of 56

South Bottoms Historic District
Lincoln, Lancaster County, Nebraska

Photo by Janet Jeffries Spencer, 1986
Nebraska State Historical Society
8603/25:7

John Floth commercial building, built ca.
1923, north (front) and east facades, site
C7-532; 303 F Street. Now serves as a
residence.



Photo #26 of 56

South Bottoms Historic District
Lincoln, Lancaster County, Nebraska

Photo by Janet Jeffries Spencer, 1986
Nebraska State Historical Society
8603/6:15

Supratype S.2 illustrated in the Jacob
Bauer house, built ca. 1900, view looking
south, site C7-487; 429 E Street.



Photo #27 of 56

South Bottoms Historic District
Lincoln, Lancaster County, Nebraska

Photo by Janet Jeffries Spencer, 1986
Nebraska State Historical Society
8603/2:21a

Supratype S.8 illustrated in the Robert
A. A. Luedtke house (1899), view looking
south toward First German Congregational
Church, site B7-44, 103 W. G Street.



Photo #28 of 56

South Bottoms Historic District
Lincoln, Lancaster County, Nebraska

Photo by Janet Jeffries Spencer, 1986
Nebraska State Historical Society
8603/2:33a

Supratype S.8 illustrated in the Jacob
Harres house (built between 1903-13), view
looking south-southwest, site C7-525;
225 F Street.



Photo #29 of 56

South Bottoms Historic District
Lincoln, Lancaster County, Nebraska

Photo by Janet Jeffries Spencer, 1986
Nebraska State Historical Society
8603/25:11

Supratype S.8 with gable door, shown in the
P. Grass house (right) (ca. 1900), site
C7-500; 332 E Street; note side opening
S.8 to the left; the C. Peif house (left)
site C7-501; 328 E Street, view looking
northwest.



Photo #30 of 56

South Bottoms Historic District
Lincoln, Lancaster County, Nebraska

Photo by Janet Jeffries Spencer, 1986
Nebraska State Historical Society
8603/4:14

(left to right)

Supratype S.11 illustrated in frame house at
left (pre.1891), site C7-162; 814 C Street;
supratype S.12 illustrated in the Swan
Holier house, center, (1907), site C7-161;
816 C Street; view looking north-northeast.



Photo #31 of 56

South Bottoms Historic District
Lincoln, Lancaster County, Nebraska

Photo by Janet Jeffries Spencer, 1986
Nebraska State Historical Society
8603/4:16

Supratype S.12 illustrated in (pre. 1891)
frame house at right, site C7-159; 824 C
Street; view looking northwest along C
Street showing left to right, sites
C7-162, 161, 160, 159.; 814-824 C Street.



Photo #32 of 56

South Bottoms Historic District
Lincoln, Lancaster County, Nebraska

Photo by Janet Jeffries Spencer, 1986
Nebraska State Historical Society
8603/5:33

Supratype S.18 illustrated by the H. J.
Amen house #2, site C7-194 (1921);
611 D Street; shows the traditional house
executed in Bungalow fashion; view
looking southwest.



Photo #33 of 56

South Bottoms Historic District
Lincoln, Lancaster County, Nebraska

Photo by Janet Jeffries Spencer, 1986
Nebraska State Historical Society
8603/5:15

Supratype S.18 shown in Wilhelm Weber
house (1907), site C7-118; 536 B Street;
view looking northwest.



Photo #34 of 56

South Bottoms Historic District
Lincoln, Lancaster County, Nebraska

Photo by Janet Jeffries Spencer, 1986
Nebraska State Historical Society
8603/25:19

Supratype S.18 illustrated by the G. Wiesk
house (between 1903 and 1913), site C7-451,
322 D Street; view looking northeast.



Photo #35 of 56

South Bottoms Historic District
Lincoln, Lancaster County, Nebraska

Photo by Janet Jeffries Spencer, 1986
Nebraska State Historical Society
8603/4:21

Supratype S.22 shown in the John Lich house
(1912), site C7-76, 731 B Street; view
looking southwest.



Photo #36 of 56

South Bottoms Historic District
Lincoln, Lancaster County, Nebraska

Photo by Janet Jeffries Spencer, 1986
Nebraska State Historical Society
8603/3:35

Supratype S.25 as seen in the J. L. Kiser
house (1905), site C7-218, 835 E Street;
view looking southeast.



Photo #37 of 56

South Bottoms Historic District
Lincoln, Lancaster County, Nebraska

Photo by Janet Jeffries Spencer, 1986
Nebraska State Historical Society
8603/4:31

Supratypes S.20; sites C7-17, 18 and 19;
view looking southwest along south 7th
Street just north of C Street; a distinct
Old World feeling is imparted by the massing,
and the stuccoed masonry incised to look
like ashlar stone; see also photo 38.



Photo #38 of 56

South Bottoms Historic District
Lincoln, Lancaster County, Nebraska

Photo by Janet Jeffries Spencer, 1986
Nebraska State Historical Society
8603/4:29

Supratype S.20 executed in Old World character, shown here in the Warren house (ca. 1900), site C7-18, 1137 South 7th Street; view looking west-northwest.



Photo #39 of 56

South Bottoms Historic District
Lincoln, Lancaster County, Nebraska

Photo by Janet Jeffries Spencer, 1986
Nebraska State Historical Society
8603/4:9

Supratype S.20 illustrated in a Craftsman style in the J. Bruntz house (1925), site C7-209, 845 D Street; view looking southwest.



Photo #40 of 56

South Bottoms Historic District
Lincoln, Lancaster County, Nebraska

Photo by Janet Jeffries Spencer, 1986
Nebraska State Historical Society
8603/6:14

Supratype S.20 illustrated in the H. Bauer
house (ca. 1904), site C7-491, 446 E Street;
view looking northeast.



Photo #41 of 56

South Bottoms Historic District
Lincoln, Lancaster County, Nebraska

Photo by Janet Jeffries Spencer, 1986
Nebraska State Historical Society
8603/3:28

Supratype S.20 in a late nineteenth century version, shown here at 745 H Street, site C8-48; view looking southwest.



Photo #42 of 56

South Bottoms Historic District
Lincoln, Lancaster County, Nebraska

Photo by Janet Jeffries Spencer, 1986
Nebraska State Historical Society
8603/2:5a

Supratype S.36 shown at right in the Eck house (1917), site B7-15, 231 West F Street; also shown (left to right) are sites B7-18, 17 and 16; view looking southeast along West F Street in the 200 block.



Photo #43 of 56

South Bottoms Historic District
Lincoln, Lancaster County, Nebraska

Photo by Janet Jeffries Spencer, 1986
Nebraska State Historical Society
8603/5:22

Supratype S.36 shown in an early example,
built of brick; the Schissler-Strasheim
house (1880's), site C7-186, 502 C Street;
view looking northeast.



Photo #44 of 56

South Bottoms Historic District
Lincoln, Lancaster County, Nebraska

Photo by Janet Jeffries Spencer, 1986
Nebraska State Historical Society
8603/5:25

Supratype S.36 illustrated in the P.
Scheidt house (between 1903-10), site
C7-185, 510 C Street; view looking northwest;
note the brick columns which mimic a pre-
dominant style usually built of wood in the
district.



Photo #45 of 56

South Bottoms Historic District
Lincoln, Lancaster County, Nebraska

Photo by Janet Jeffries Spencer, 1986
Nebraska State Historical Society
8603/5:13

Supratype S.39 illustrated by the John Kiser house (1915), site C7-116, 546 B Street; view looking northwest; note the low masonry wall surrounding the property.



Photo #46 of 56

South Bottoms Historic District
Lincoln, Lancaster County, Nebraska

Photo by Janet Jeffries Spencer, 1986
Nebraska State Historical Society
8603/5:9

Supratype S.39 shown here in the Casper Sell
house (1911), site C7-48, 534 A Street; view
looking northwest.



Photo #47 of 56

South Bottoms Historic District
Lincoln, Lancaster County, Nebraska

Photo by Janet Jeffries Spencer, 1986
Nebraska State Historical Society
8603/3:21

Supratype S.37 shown in the house at 744
South 8th Street (ca. 1890), site C7-296;
view looking northeast, also shows the east
boundary of the district at this point,
directly behind the house.



Photo #48 of 56

South Bottoms Historic District
Lincoln, Lancaster County, Nebraska

Photo by Janet Jeffries Spencer, 1986
Nebraska State Historical Society
8603/2:31a

Supratype S.37 shown in its side-opening variation, the George Lismann house (ca. 1909-13), 1117 South 8th Street, rented from the Immanuel German Evangelical Lutheran Church; view looking southwest. Site # C7-22.



Photo #49 of 56

South Bottoms Historic District
Lincoln, Lancaster County, Nebraska

Photo by Janet Jeffries Spencer, 1986
Nebraska State Historical Society
8603/25:24

The front-extending, gabled wing, common
in the district, illustrated on the Jacob
Amend house (ca. 1901), 330 C Street;
view looking northwest. Site # C7-397.



Photo #50 of 56

South Bottoms Historic District
Lincoln, Lancaster County, Nebraska

Photo by Janet Jeffries Spencer, 1986
Nebraska State Historical Society
8603/2:11a

Supratype S.1 illustrated in its double-pen
version at 218 West E Street (ca. 1900),
site B7-10; view looking north-northeast.



Photo #51 of 56

South Bottoms Historic District
Lincoln, Lancaster County, Nebraska

Photo by Janet Jeffries Spencer, 1986
Nebraska State Historical Society
8603/2:15a

Supratype S.7 shown here in the Becter house (1931), site B7-14, 242 West E Street; view looking northeast; note the frame garage at the rear.



Photo #52 of 56

South Bottoms Historic District
Lincoln, Lancaster County, Nebraska

Photo by Janet Jeffries Spencer, 1986
Nebraska State Historical Society
8603/6:27

Supratype S.11 illustrated in the house at
343 B Street (between 1903-28), site
C7-334; view looking southwest.



Photo #53 of 56

South Bottoms Historic District
Lincoln, Lancaster County, Nebraska

Photo by Janet Jeffries Spencer, 1986
Nebraska State Historical Society
8603/25:34

Supratype S.17 in the frame house
(between 1920-28), site C7-406, 206 C Street;
view looking northwest.



Photo #54 of 56

South Bottoms Historic District
Lincoln, Lancaster County, Nebraska

Photo by Janet Jeffries Spencer, 1986
Nebraska State Historical Society
8603/6:23

Supratype S.60 shown in the J. Eckhardt
house (between 1896/1903), site C7-444,
424 D Street; view looking northwest.



Photo #55 of 56

South Bottoms Historic District
Lincoln, Lancaster County, Nebraska

Photo by Janet Jeffries Spencer, 1986
Nebraska State Historical Society
8603/2:16a

Property showing loss of historic integrity due to changes material, windows, porches and scale, even though its historic massing (e.g. supertype S.12) is still clearly visible; Lewis Tresler house (ca. 1912), site B7-3, 245 West E Street; view looking southeast.



Photo #56 of 56

South Bottoms Historic District
Lincoln, Lancaster County, Nebraska

Photo by Janet Jeffries Spencer, 1986
Nebraska State Historical Society
8603/2:7a

H. Schmall summer kitchen showing gable door into attic storage area, site B7-18; 215 W. F Street. See also photo 14, north (front) and east facades.