

50  
The M.J. Boardman houses taken shortly after they were built and occupied in August 1904. Observe no vines on houses or an arched gate, dead tree at rear of M.J. house, old stumps and logs in front of house and no scrubby along roadway



FEB 28 1979

Riordan Estate  
Arizona  
Looking NE

*COCONINO CO.*

rear of building

Date: 1904

Negative at Northern Arizona University

JAN 8 1979

#1

*From Michael Riordan scrapbook  
(To be catalogued in June, 1977 in N.A. PHS photo collection)*





FEB 28 1979

COCONINO CO.

Riordan Estate

Arizona

NW corner of west wing

Date: 1977

Negative at Northern Arizona University

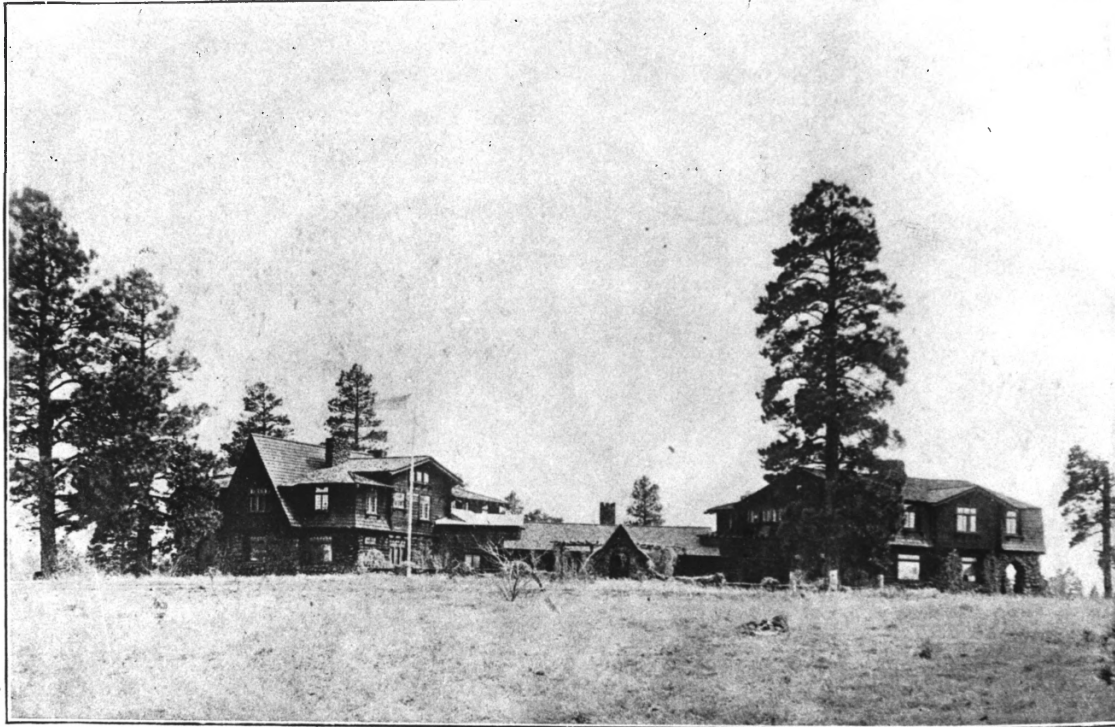
#2

JAN 8 1979



## Two-fold Comfort at Home

Here are the M. J. and J. A. Riordan residences at Milton, a Flagstaff suburb. The homes are models of simple elegance and illustrate the many fine possibilities for home building in this county. The general effect of the pine forests is observable here, as in all home districts of Coconino County and its adjacent sections.



The Riordan Residences

FEB 28 1979

Riordan Estate  
Arizona

*COCONINO COUNTY*

Looking south  
Date Unknown

Negative at Northern Arizona University

#3

JAN 8 1979

See explanation #1

2



FEB 28 1979

Riordan Estate  
Arizona

Looking south

Date: 1904.

Negative at Northern Arizona University

*COCONINO CO.*

JAN 8 1979

#4

*From Michael Riordan scrapbook  
(to be cataloged in June, 1977 in NAPHS photo  
collection)*





FEB 26 1979

COCOA, AZ CO.

Riordan Estate  
Arizona

Terrace gate

Date: 1977

Negative at ASPB

#5

JAN 8 1979





FEB 26 1979

COCONINO COUNTY

Riordan Estate  
Arizona

NE corner of east wing

Date: 1977

Negative at ASPB

#6

JAN 8 1979





FEB 20 1979

Riordan Estate

Arizona

East Wing--looking south

Date: 1977

Negative at ASPB

COCONINO  
COUNTY

JAN 8 1979

#7