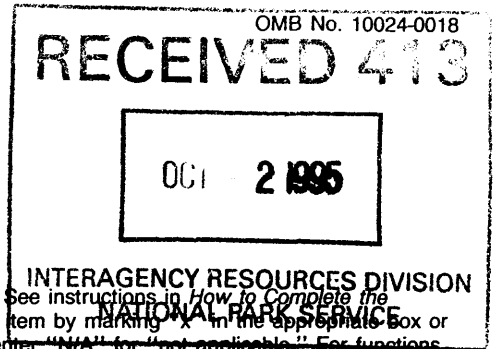


United States Department of the Interior
National Park Service

National Register of Historic Places
Registration Form



This form is for use in nominating or requesting determinations for individual properties and districts. See instructions in *How to Complete the National Register of Historic Places Registration Form* (National Register Bulletin 16A). Complete each item by marking "X" in the appropriate box or by entering the information requested. If an item does not apply to the property being documented, enter "N/A" for "not applicable." For functions, architectural classification, materials, and areas of significance, enter only categories and subcategories from the instructions. Place additional entries and narrative items on continuation sheets (NPS Form 10-900a). Use a typewriter, word processor, or computer, to complete all items.

1. Name of Property

historic name Ertel Funeral Home
other names/site number 5MT6925

2. Location

street & number 42 North Market Street N/A not for publication
city or town Cortez N/A vicinity
state Colorado code CO county Montezuma code 083 zip code 81321

3. State/Federal Agency Certification

As the designated authority under the National Historic Preservation Act, as amended, I hereby certify that this nomination request for determination of eligibility meets the documentation standards for registering properties in the National Register of Historic Places and meets the procedural and professional requirements set forth in 36 CFR Part 60. In my opinion, the property meets does not meet the National Register criteria. I recommend that this property be considered significant nationally statewide locally. (See continuation sheet for additional comments.)
James Edward Hartman September 26, 1995
Signature of certifying official/Title Date
State Historic Preservation Officer
State of Federal agency and bureau

In my opinion, the property meets does not meet the National Register criteria. (See continuation sheet for additional comments.)
Signature of certifying official/Title Date
State or Federal agency and bureau

4. National Park Service Certification

- entered in the National Register. See continuation sheet.
- determined eligible for the National Register See continuation sheet.
- determined not eligible for the National Register.
- removed from the National Register.
- other, (explain:)

Edson A. Beall 11.2.95
Signature of the Keeper Date of Action
Entered to the National Register

Name of Property

County and State

5. Classification

Ownership of Property

(Check as many boxes as apply)

- private
- public-local
- public-State
- public-Federal

Category of Property

(Check only one box)

- building(s)
- district
- site
- structure
- object

Number of Resources within Property

(Do not include previously listed resources in the count.)

Contributing	Noncontributing	
1	0	buildings
0	0	sites
0	0	structures
0	0	objects
1	0	Total

Name of related multiple property listing

(Enter "N/A" if property is not part of a multiple property listing.)

N/A

Number of contributing resources previously listed in the National Register

N/A

6. Function or Use

Historic Functions

(Enter categories from instructions)

Funerary: mortuary

Current Functions

(Enter categories from instructions)

Funerary: mortuary

7. Description

Architectural Classification

(Enter categories from instructions)

Mission/Spanish Colonial Revival

Materials

(Enter categories from instructions)

foundation cement

walls stucco

roof asphalt; ceramic tile

other

Narrative Description

(Describe the historic and current condition of the property on one or more continuation sheets.)

8. Statement of Significance

Applicable National Register Criteria

(Mark "x" in one or more boxes for the criteria qualifying the property for National Register listing.)

- A Property is associated with events that have made a significant contribution to the broad patterns of our history.
B Property is associated with the lives of persons significant in our past.
[X] C Property embodies the distinctive characteristics of a type, period, or method of construction or represents the work of a master, or possesses high artistic values, or represents a significant and distinguishable entity whose components lack individual distinction.
D Property has yielded, or is likely to yield, information important in prehistory or history.

Criteria Considerations

(Mark "x" in all the boxes that apply.)

Property is:

- A owned by a religious institution or used for religious purposes.
B removed from its original location.
C a birthplace or grave.
D a cemetery.
E a reconstructed building, object, or structure.
F a commemorative property.
G less than 50 years of age or achieved significance within the past 50 years.

Areas of Significance

(Enter categories from instructions)

ARCHITECTURE

Period of Significance

1936

Significant Dates

1936

Significant Person

(Complete if Criterion B is marked above)

N/A

Cultural Affiliation

N/A

Architect/Builder

Simon, Walter H.

Narrative Statement of Significance

(Explain the significance of the property on one or more continuation sheets.)

9. Major Bibliographical References

Bibliography

(Cite the books, articles, and other sources used in preparing this form on one or more continuation sheets.)

Previous documentation on file (NPS):

- preliminary determination of individual listing (36 CFR 67) has been requested
previously listed in the National Register
previously determined eligible by the National Register
designated a National Historic Landmark
recorded by Historic American Buildings Survey #
recorded by Historic American Engineering Record #

Primary location of additional data:

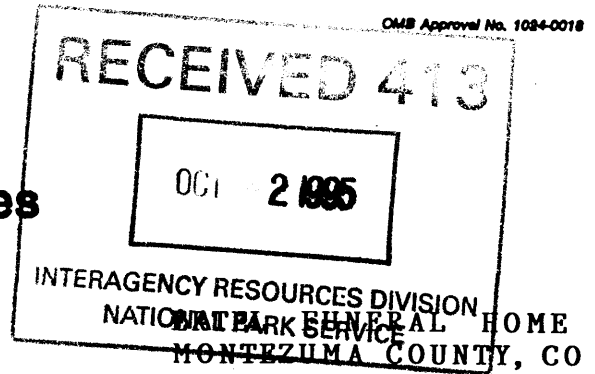
- [X] State Historic Preservation Office
Other State agency
Federal agency
Local government
University
Other

Name of repository:

United States Department of the Interior
National Park Service

National Register of Historic Places Continuation Sheet

Section number 7 Page 1



DESCRIPTION

Despite its location in downtown Cortez, the Ertel Funeral Home looks more like a residence than a commercial establishment. This effect is created in large part to its scale, Mission style and landscaped lawn. The one-story building has textured, tan stucco walls that contrast with the red brick accents and red roof tile. Smooth stucco is shaped into lintels and lug sills that contain the multi-light windows. The irregularly shaped structure has multiple roof lines comprised of flat sections behind parapets, shed roof extensions and a gabled projection. The red ceramic Mission tile covers the sloped roofs and caps the parapet walls. The focal point of the building is the gabled projection which is reminiscent of a *campanario*. This shortened vertical wall projection has a niche with a bell.

Situated on the southeast corner of Market and North street, the Ertel Funeral Home has its off-center, main entrance on Market Street, facing west. Flanked by a wrought iron railing, three steps lead to a platform and the slightly projecting gabled entrance bay. Double doors of metal-framed glass are positioned below a semi-circular arch of red brick. The neon letters "Funeral Home Ertel" fill the stuccoed, arched space above the doors. Directly above the brick arch is a niche with a red brick sill and a wooden beam from which hangs a bronze bell. A large multi-light window is positioned below a shed roof with exposed rafters on one side of the entrance bay and a small six-light window and two vigas below a parapet wall are located on the other side.

All of the windows are straight-headed, metal framed with multi-lights. The smaller windows that contain six lights are a single fixed sash. The larger windows contain one or two casements, depending on the size of the window, with fixed sashes at the top and sides.

The North Street elevation contains another public entrance into the building. Wrought iron railings and concrete steps lead to a platform where two carved wooden doors provide access to the chapel. Three windows parade across the facade and two small windows flank the chimney. Instead of the "lintel effect," the three windows have a scored semi-circular arch with a centered diamond motif.

United States Department of the Interior
National Park ServiceNational Register of Historic Places
Continuation SheetSection number 7 Page 2ERTEL FUNERAL HOME
MONTEZUMA COUNTY, CO

DESCRIPTION (continued)

The south elevation is the most irregular as it includes two extensions. A series of two large windows and two small windows are unevenly spaced across the expanse of stucco before the building juts to the south. Three vigas and a large, slightly projecting window capped with ceramic tile fill one facade and, after rounding the corner, a door with transom light and two small windows fill the other. At the southeast corner of the building is the breezeway that allows vehicle access to the rear of the building.

From the breezeway, three large windows punctuate the rear wall which contains the attached garage. Capable of holding a hearse, two limousines and an ambulance, the garage is entered from the North Street elevation through a metal overhead door. A shed roof extension with a door and small window complete the rear elevation.

From the entrance is a reception room accentuated by a fireplace, decorated with tile and a niche. A wide arch allows access to the chapel with its curved ceiling and distinctive light fixtures. The 25 by 51 foot chapel contains wooden pews. On the east wall is a lighted panel of colored glass showing a ship setting out to sea with a verse of Tennyson's poem "Crossing the Bar" below it. The family room offsets the chapel opposite the bier and pulpit. Music comes from another room opening off the chapel. On the south end of the reception room is a wrought iron railing that leads to display rooms in the basement. An office and the embalming room are also located at this level.

The Ertel Funeral Home has undergone few changes since its construction. The neon sign above the front entrance was installed in 1955. In 1966, the southeast corner of the building, an extension of the garage, was opened up creating a breezeway that allowed cars to pass through and line up for processions. That same year, the wooden garage doors were replaced and the concrete driveway that leads to the garage was re-poured. In the late 1960s, wooden pews replaced the wicker chairs that had provided seating in the chapel. The original wooden doors at the main entrance were replaced with the current glass ones in 1977. The sidewalks on the west elevation were redone in 1984 and those on the north elevation in 1989.

United States Department of the Interior
National Park ServiceNational Register of Historic Places
Continuation SheetSection number 7 & 8 Page 3ERTEL FUNERAL HOME
MONTEZUMA COUNTY, CO**DESCRIPTION (continued)**

In 1977, the basement was excavated beyond the display room making space for relocation of the embalming room and dressing room and adding an office. At that time the coal fired steam heat was replaced with hot water baseboard heat. To allow easier access to the embalming room from the garage, a hoist was built and installed. On the main floor the remodeling moved the restrooms just off the hallway of the south entrance and the embalming and reposing rooms were turned into a spacious office with room to accommodate an occasional viewing. All these alterations have had very little impact on the integrity of the building. The building remains in excellent condition.

SIGNIFICANCE

The Ertel Funeral Home meets criterion C for its architectural significance. Designed by Denver architect, Walter H. Simon, the building is an interesting interpretation of the Mission style that incorporates Pueblo Revival elements.

The building's simplicity of form is typical of the Mission style. Despite lacking the distinctive curvilinear-shaped gable, Simon's design possesses many elements of the Mission style. These include the stucco finish, round arches, projecting eaves with exposed rafters, and a red-tiled roof. The bell tower that accompanies buildings of this style appears here as a short *campanario* with a niche, instead of a cutout, to hold the bell. The archivolt trim often seen around entries is reduced to a single course of bricks here. However, in his use of *vigas* and a flat roof, Simon incorporated elements of the Pueblo Revival style. Cortez is located in the extreme southwestern portion of the state. Perhaps the architect's choice of stylistic elements was appropriate given the proximity of Cortez to the southwest where the Mission and Pueblo Revival styles proliferate. There is only one other building in town that hints of the Mission style, the former Kenyon Pontiac Garage on East Main. With the exception of the stucco finish and a curved (almost elliptical) gable end, this building possesses no other characteristics of the style.

Little is known about Walter H. Simon, the architect who designed this building. City Directories indicate he practiced in Denver from 1925 through 1965. A 1938 Who's Who in Colorado states he was born in Quincy, Illinois in 1892 and was an architect in Eldorado, Kansas from 1915 to 1921 at which time he opened a practice in Denver.

United States Department of the Interior
National Park ServiceNational Register of Historic Places
Continuation SheetSection number 8 Page 4ERTEL FUNERAL HOME
MONTEZUMA COUNTY, CO

SIGNIFICANCE (continued)

J. Walter Ertel purchased the Ames and Omo Funeral Homes of Dolores, Mancos, and Cortez in 1921. In 1933 Ertel consolidated the three funeral homes in an old two-story frame building on the site of the present funeral home. Walter H. Simon drew up plans for a new building in August 1935 and construction began that same year. W. G. Clever, assisted by W. H. Goodhall, had general charge of construction; J. E. Barrett did the painting and decorating; and Olsie Harris installed the plumbing and heating.

On January 26, 1936, the Ertels and the Cortez community celebrated the opening of the new facility. The weekend-long affair was a major event that received extensive coverage in both local newspapers. The Montezuma Valley Journal devoted 50 column inches with six separate articles about the Ertel Funeral Home and its construction. The Cortez Sentinel called it "the finest Mortuary on the whole western slope of Colorado" and doubted "if any other town of the same size in the state can boast of such a fine funeral home."

Since its construction, the Ertel Funeral Home has been and continues to be the only funeral home located in Montezuma County. The establishment has continuously served all of Montezuma County, portions of Dolores County, and occasionally San Miguel County. The Ertel Funeral Home continues to serve on a requested basis many Navajo families in San Juan County, Utah and Apache County, Arizona, although both areas have a funeral home. Three generations of Ertels have owned and operated the Ertel Funeral Home: J. Walter Ertel from 1921-1956; Walter E. Ertel (son) from 1956-1992; and Keenan G. Ertel (grandson) from 1993 to the present.

J. Walter Ertel's decision to erect such an impressive structure was his expression of faith in the future of Cortez. Due to the lack of a large community room, Ertel offered the building to the town for its meeting room needs. In the several decades after its construction, the home was one of the few places in town with enough space and appropriate decor to lend itself to formal gatherings. While the Calkins School had a sizable gymnasium, the steel benches around the perimeter were not very flexible, nor did it provide much atmosphere. The size, quietness, and flexible seating of the chapel made it popular for community meetings, wedding and anniversary parties, and church services.

United States Department of the Interior
National Park Service

National Register of Historic Places Continuation Sheet

Section number 8 Page 5

ERTEL FUNERAL HOME
MONTEZUMA COUNTY, CO

SIGNIFICANCE (continued)

In 1936, the chapel was used as a site for the organization of the Citizens State Bank of Cortez. Southwest Memorial Hospital held their organizational meetings in 1947 at this location. The Cortez School District held school board meetings at the Funeral Home from 1940-1941. Several churches held services in the chapel until they could find facilities to house their church. St. Margaret Mary Catholic Church met from 1939-1943, the Church of Jesus Christ of Latter Day Saints met from 1939-1940, and the First Baptist Church met from 1939-1940. Although the Masons, Eastern Star, DeMolay and Rainbow Girls met upstairs in the Stone Building (until the lodge was built in 1954), these organizations all held their installation ceremonies at the chapel. Not until just prior to the oil boom of the early 1950s did Cortez began construction of other gathering places, such as the Mary Blake Hall adjoining St. Barnabas Episcopal Church and the American Legion Home, both constructed in 1947. At approximately this same time, the Funeral Home became less involved as a meeting place for the community.

United States Department of the Interior
National Park Service

National Register of Historic Places Continuation Sheet

Section number 9 & 10 Page 6

ERTEL FUNERAL HOME
MONTEZUMA COUNTY, CO

BIBLIOGRAPHY

Blumenson, John J.-G. Identifying American Architecture: A Pictorial Guide to Styles and Terms, 1600-1945, 2nd ed. Nashville, Tennessee: American Association for State and Local History, 1981.

Colorado Press Association, Inc., comp., Who's Who in Colorado. Boulder, Colorado: University of Colorado, 1938.

Cortez Sentinel, 23 January 1936; 27 January 1986.

Ertel, Walter E. [son of J. Walter & retired owner of Ertel Funeral Home] Cortez, Colorado. Interview, 2 April 1995.

Ballenger & Richards Denver Directory. Denver: Gazetteer Publishing and Printing Co., 1921-1968.

Johnson, Tom. [local historian] Cortez, Colorado. Interview, 5 April 1995.

Montezuma Valley Journal, 23 January 1936.

Mosher, Virginia Ertel. [daughter of J. Walter & employee] Cortez, Colorado. Interview, 2 April 1995.

Poppeliers, John C.; Chambers, S. Allen Jr.; and Schwartz, Nancy B. What Style Is It?, A Guide to American Architecture. Washington, D. C.: Preservation Press, 1983.

VERBAL BOUNDARY DESCRIPTION

Lots 15-18, Block 30, Town of Cortez

BOUNDARY JUSTIFICATION

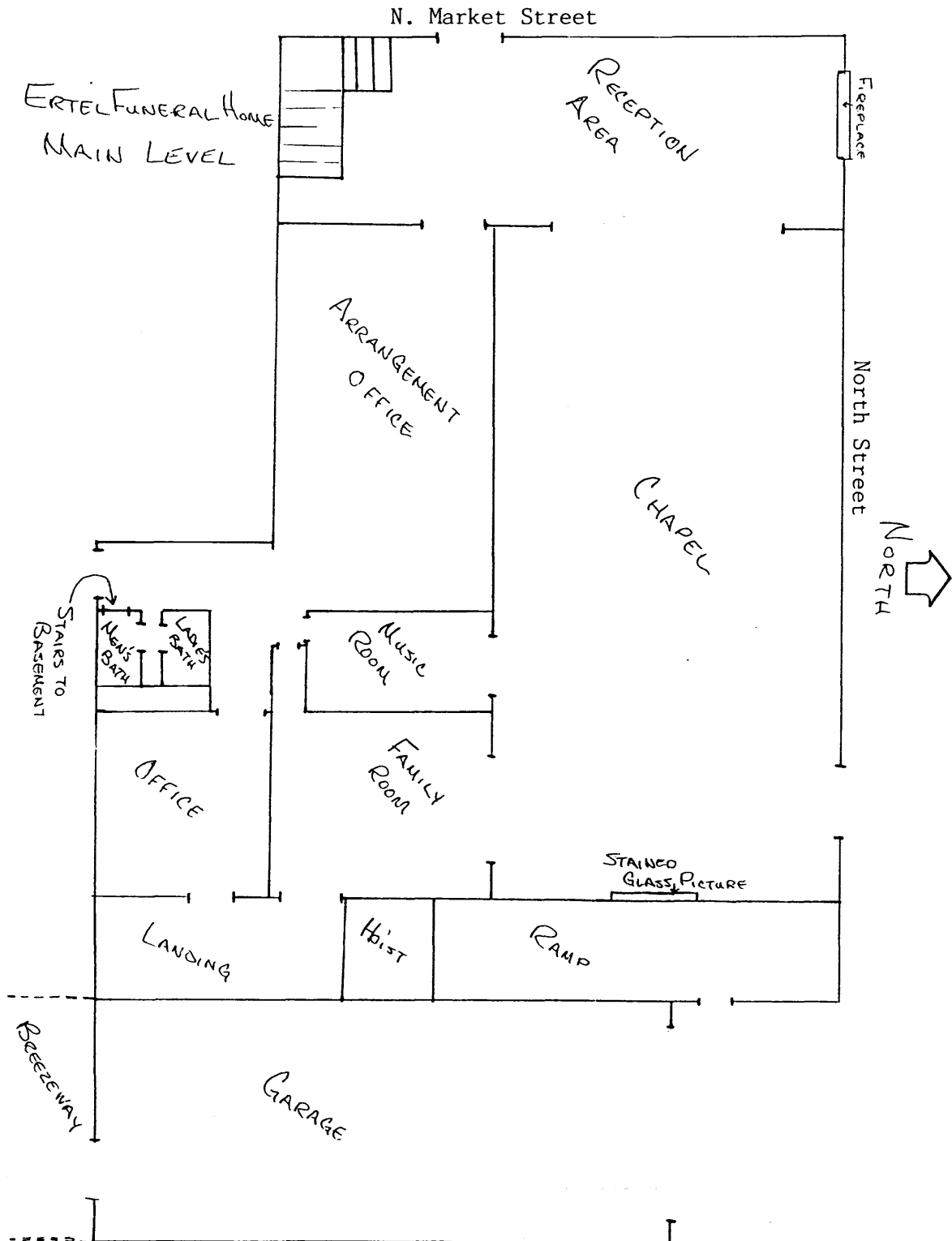
The nominated property includes the entire parcel historically associated with the Ertel Funeral Home.

United States Department of the Interior
National Park Service

National Register of Historic Places Continuation Sheet

Section number _____ Page 7

ERTEL FUNERAL HOME
MONTEZUMA COUNTY, CO

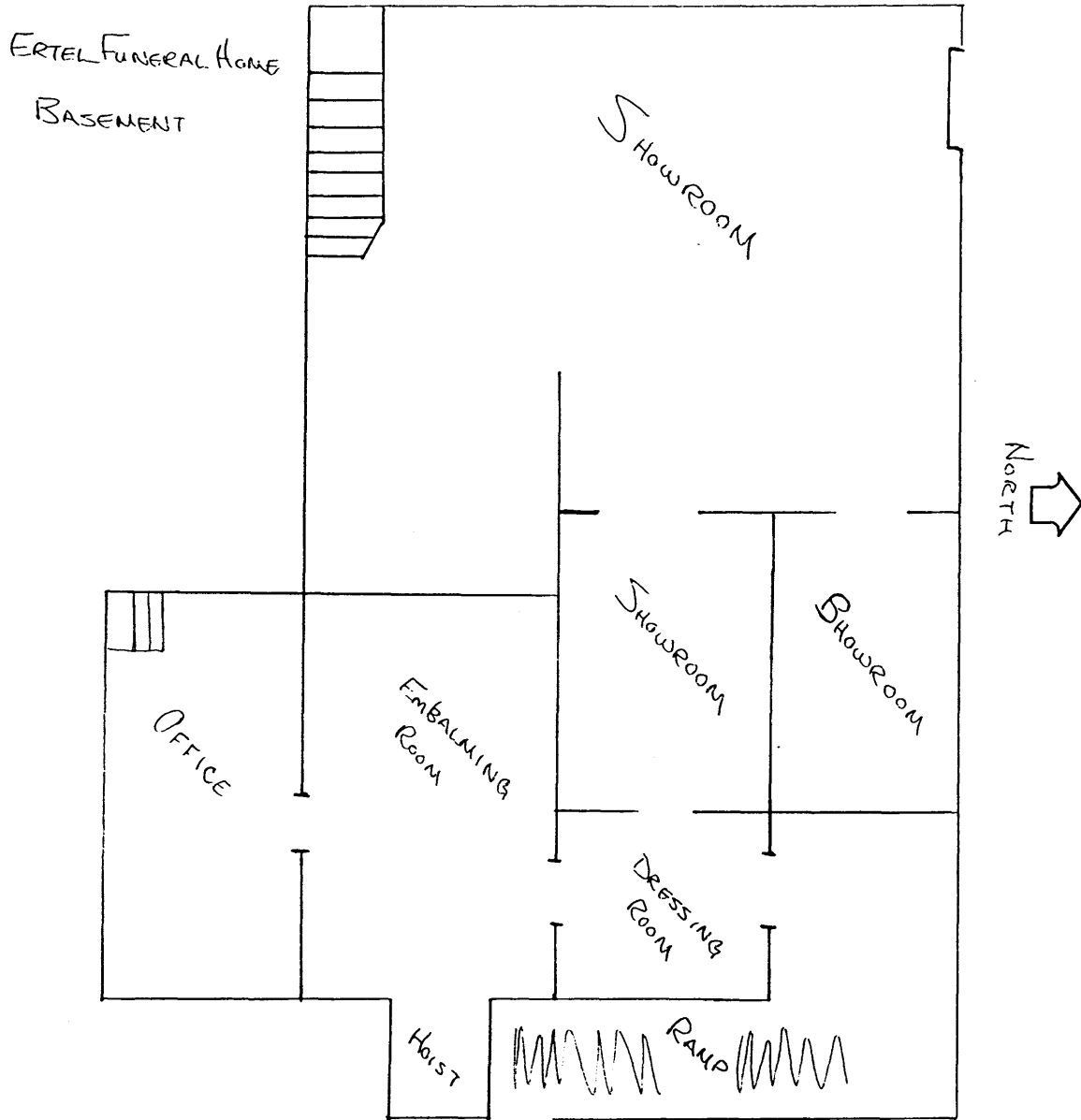


United States Department of the Interior
National Park Service

National Register of Historic Places
Continuation Sheet

Section number _____ Page 8

ERTEL FUNERAL HOME
MONTEZUMA COUNTY, CO



United States Department of the Interior
National Park Service

National Register of Historic Places
Continuation Sheet

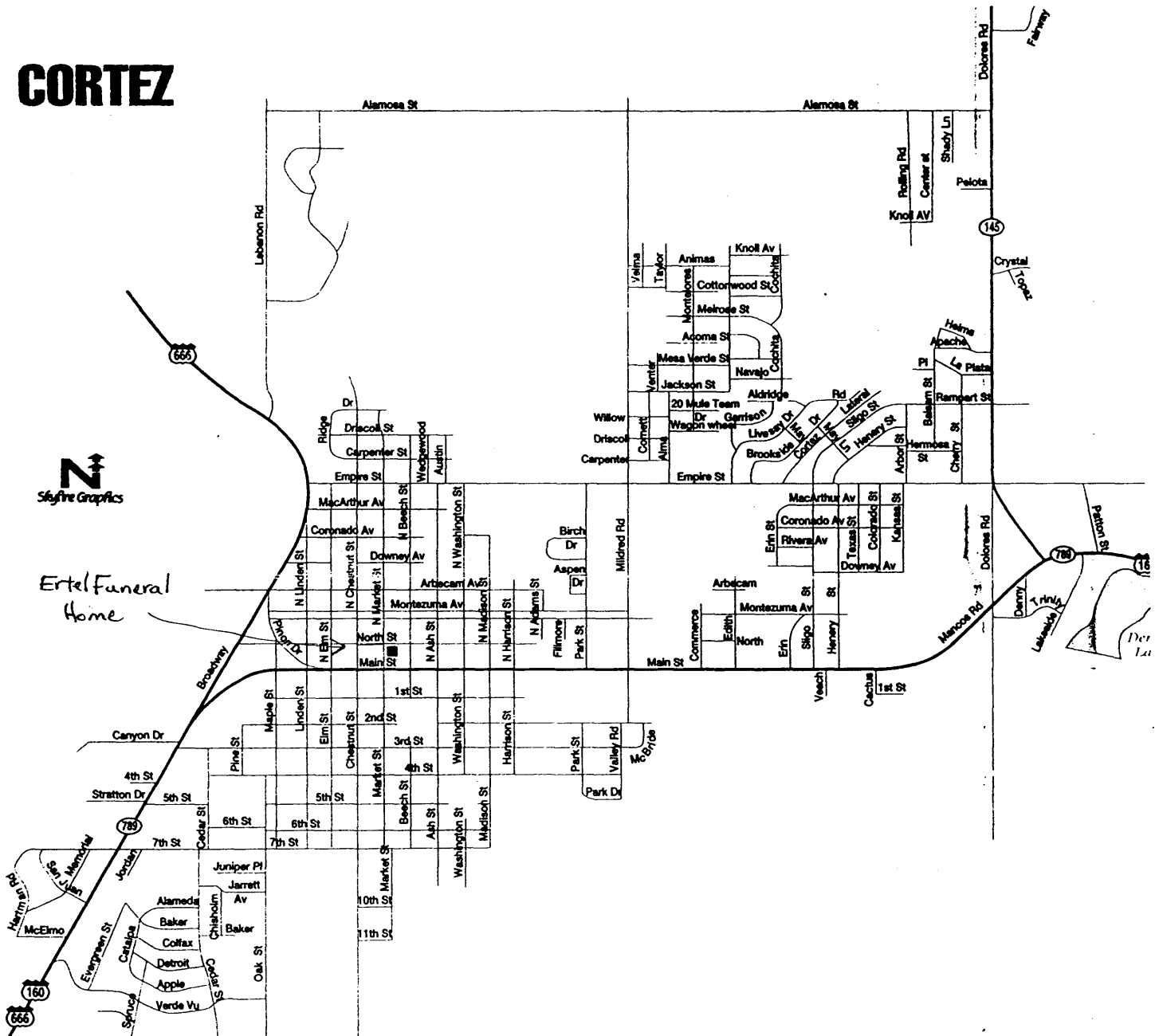
Section number _____ Page 9

ERTEL FUNERAL HOME
MONTEZUMA COUNTY, CO

CORTEZ



Ertel Funeral Home

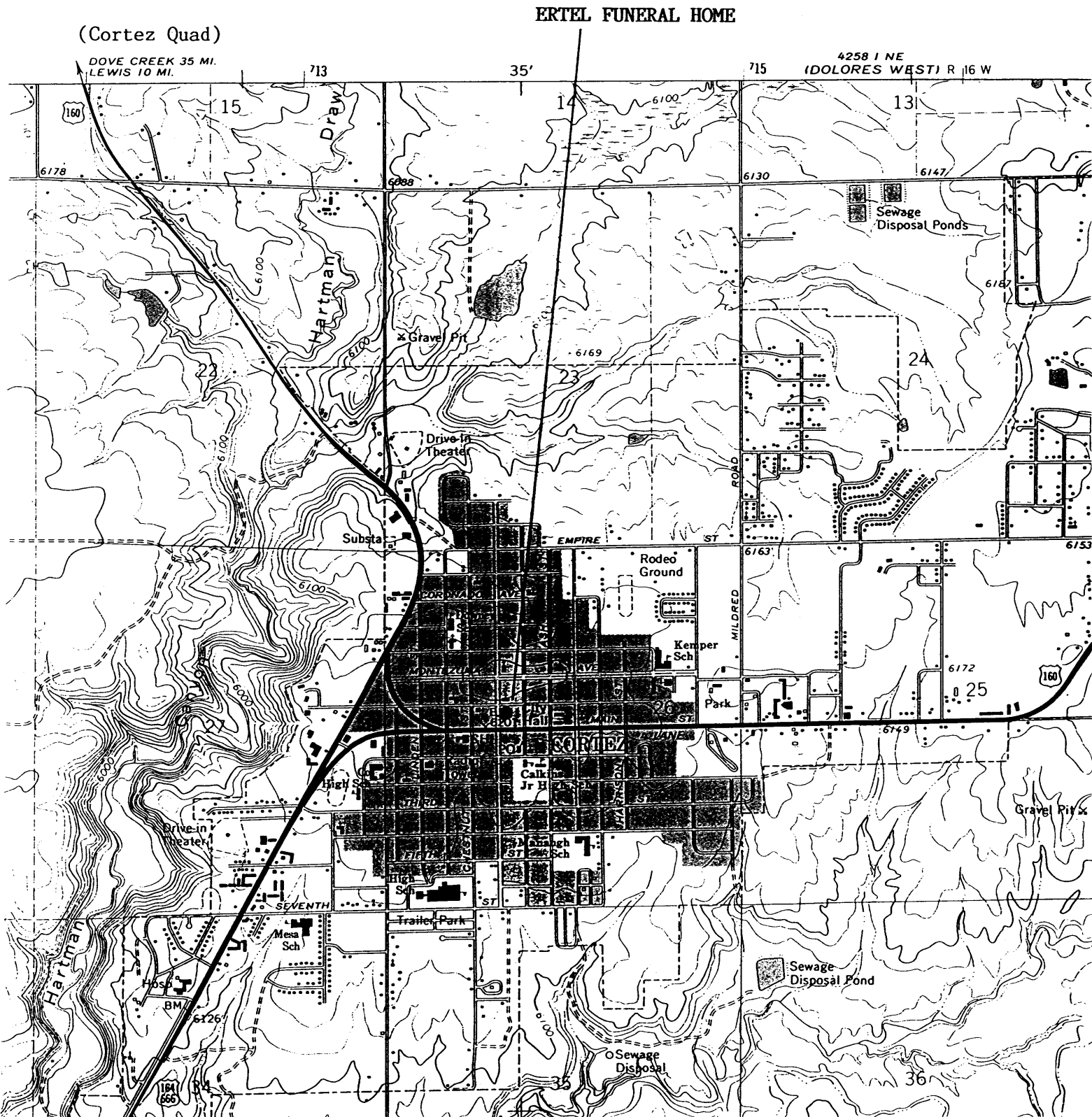


United States Department of the Interior
National Park Service

National Register of Historic Places
Continuation Sheet

Section number _____ Page 10

ERTEL FUNERAL HOME
MONTEZUMA COUNTY, CO



United States Department of the Interior
National Park Service

National Register of Historic Places
Continuation Sheet

Section number _____ Page 11

ERTEL FUNERAL HOME
MONTEZUMA COUNTY, CO

PHOTOGRAPH LOG

The following information is the same for all photographs, except where noted:

name of property: Ertel Funeral Home
city, county and state: Cortez, Montezuma County, Colorado
photographer: Keenan Ertel
date: May 15, 1995
location of negative: 42 North Market Street, Cortez

photo #

- 1 Market Street (west) elevation; camera facing east
- 2 south elevation; camera facing north
- 3 south elevation; camera facing east
- 4 northwest corner of building; camera facing southeast
- 5 North Street elevation; camera facing southeast
- 6 northeast corner of building; camera facing south
- 7 portion of rear (east) elevation; camera facing west
- 8 rear elevation; camera facing west
- 9 breezeway at rear elevation; camera facing west
- 10 interior - reception area; camera facing north
- 11 interior - chapel; camera facing east
- 12 interior - stained glass in chapel; camera facing east
- 13 interior - family and music rooms; camera facing south
- 14 interior - embalming room; camera facing west

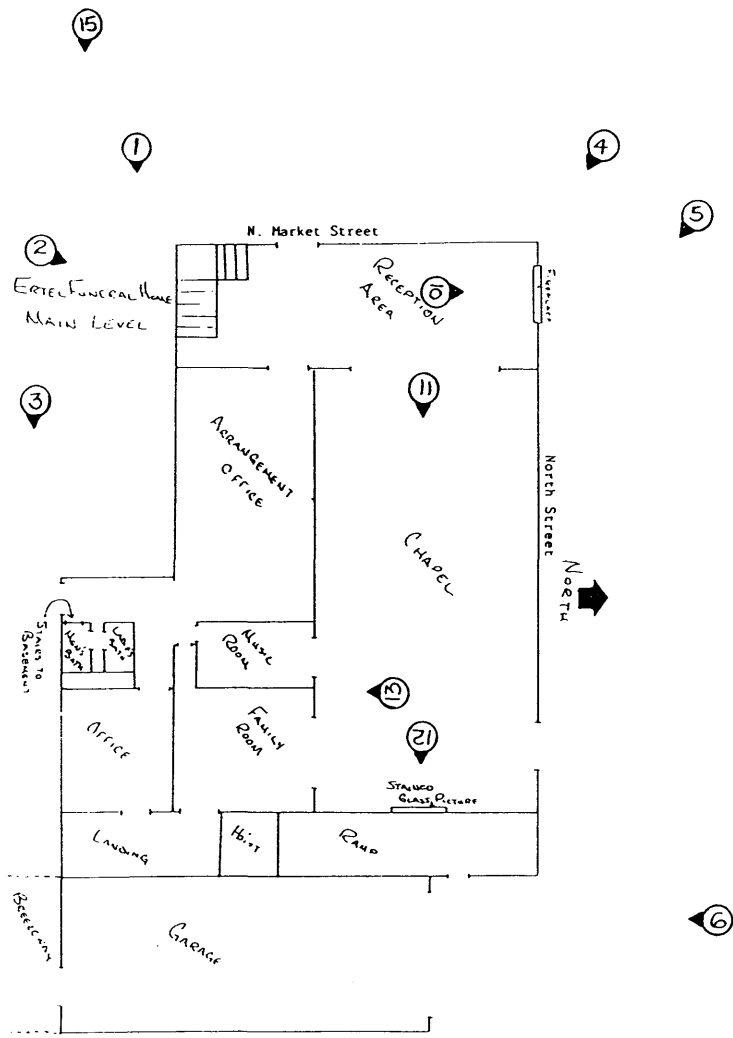
- 15 historic photo; camera facing east
photographer: unknown
date: circa 1938

United States Department of the Interior
National Park Service

National Register of Historic Places
Continuation Sheet

Section number _____ Page 12

ERTEL FUNERAL HOME
MONTEZUMA COUNTY, CO



⊙ = photograph