



No./West Boundary of Conference  
Evergreen Co. 4/20/77  
Photo. Dick Crain  
looking So./West at Bldg.# 8  
Neg. #14 at State His. Soc. of C

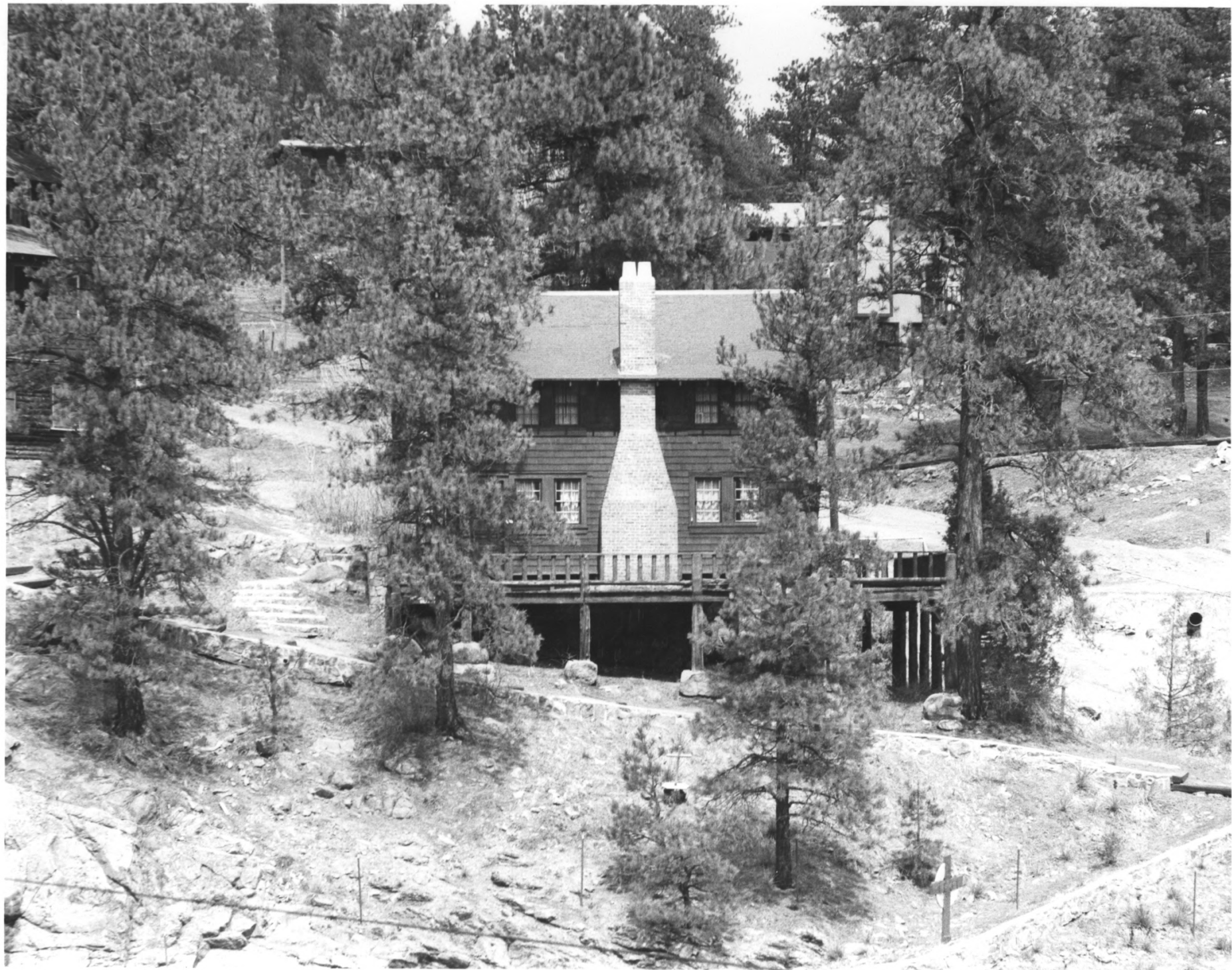
MAR 14 1979

DOE

MAR 1 1979

Evergreen Conference District  
Jefferson County, Colorado

1812



Front view of Willams House

Evergreen Co. 4/20/77

Photo. Dick Crain

looking north at Bldg. #2

MAY 1

1979

MAR 14 1979

*Evergreen Conference District  
Jefferson County, Colorado*

*2 of 2*

*DOE*

*MAY 1*



North Boundary of Conference

Evergreen Co. 4/20/77

Photo. Dick Crain

MAR 14 1979

looking west at Bldg. #2, 4, 5

Neg. # 12 at Co. State His. Soc

*Evergreen Conference District  
Jefferson County, Colorado*

*3 of 12*

*DOE*



<sup>DOE</sup>  
MAY 1 1979 MAR 14 1979  
Douglas Hall & Bancroft

Evergreen Co. 4/20/77  
Photo. Dick Crain Bldgs. 14  
looking south at front of 17

*Evergreen Conference District  
Jefferson County, Colorado*

*4/12*





East Boundary of Conference  
Evergreen Co. 4/20/77  
Photo. Dick Crain  
looking north at bld.#1 & 2  
Neg. # 9 at Co. State His. Soc.

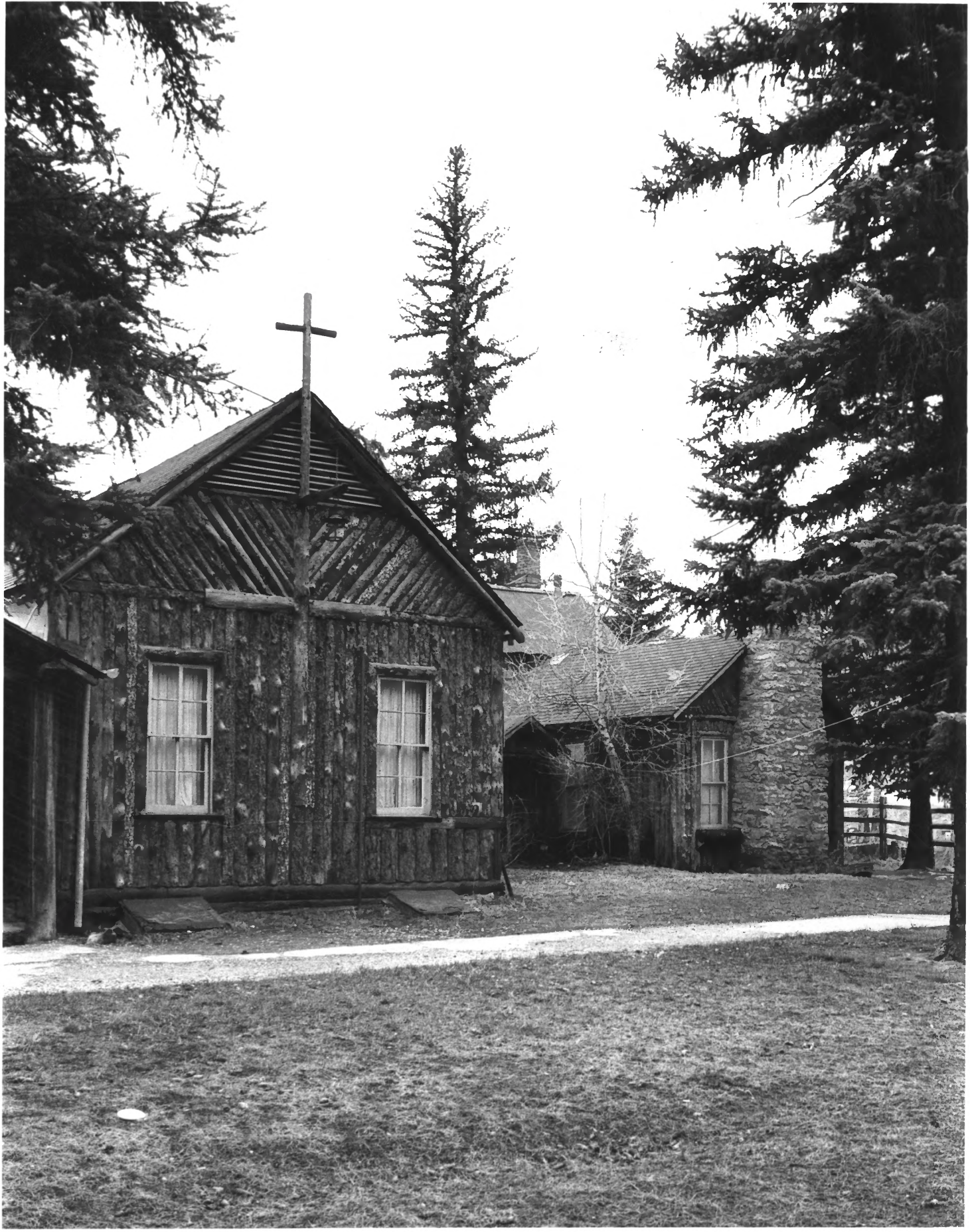
Evergreen Conference District  
Jefferson County, Colorado

5 of 12

DOE

MAY 1

1979

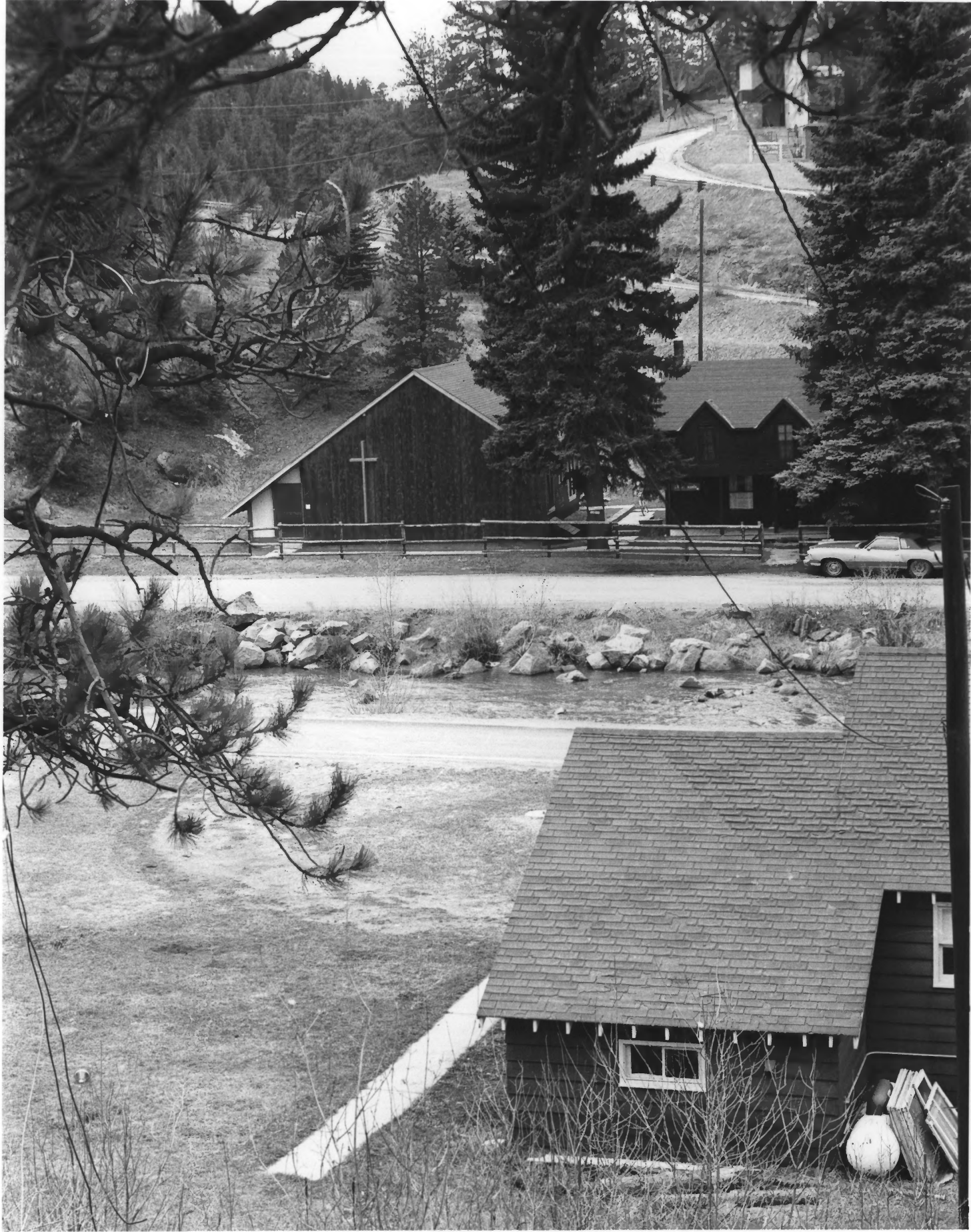


Stewarts Hotel of Conference  
Evergreen Co. 4/20/77  
Photo. Dick Crain MAR 14 1979  
#  
looking south at front of B.20  
Neg. #19 at Co. State His. Soc.

Evergreen Conference District  
Jefferson County, Colorado

6 of 12

DOE



So./West Boundary of Conference  
Evergreen Co. 4/20/77 *DOE*  
Photo. Dick Crain MAY 1 1979

looking West at Bldg. #10 & 9

Neg. # 2 at Co. State His. Soc.

MAR 14 1979

*Evergreen Conference District*

*Tefferson County, ~~Colorado~~ Colorado*

*79/12*



Bell Tower of Conference  
Evergreen Co. 4/20/77  
Photo. Sandy Crain  
looking south MAR 14 1979  
Neg. # 17 at Co. State His.Soc.

Evergreen Conference District  
Jefferson County, Colorado

8 of 12

DOE







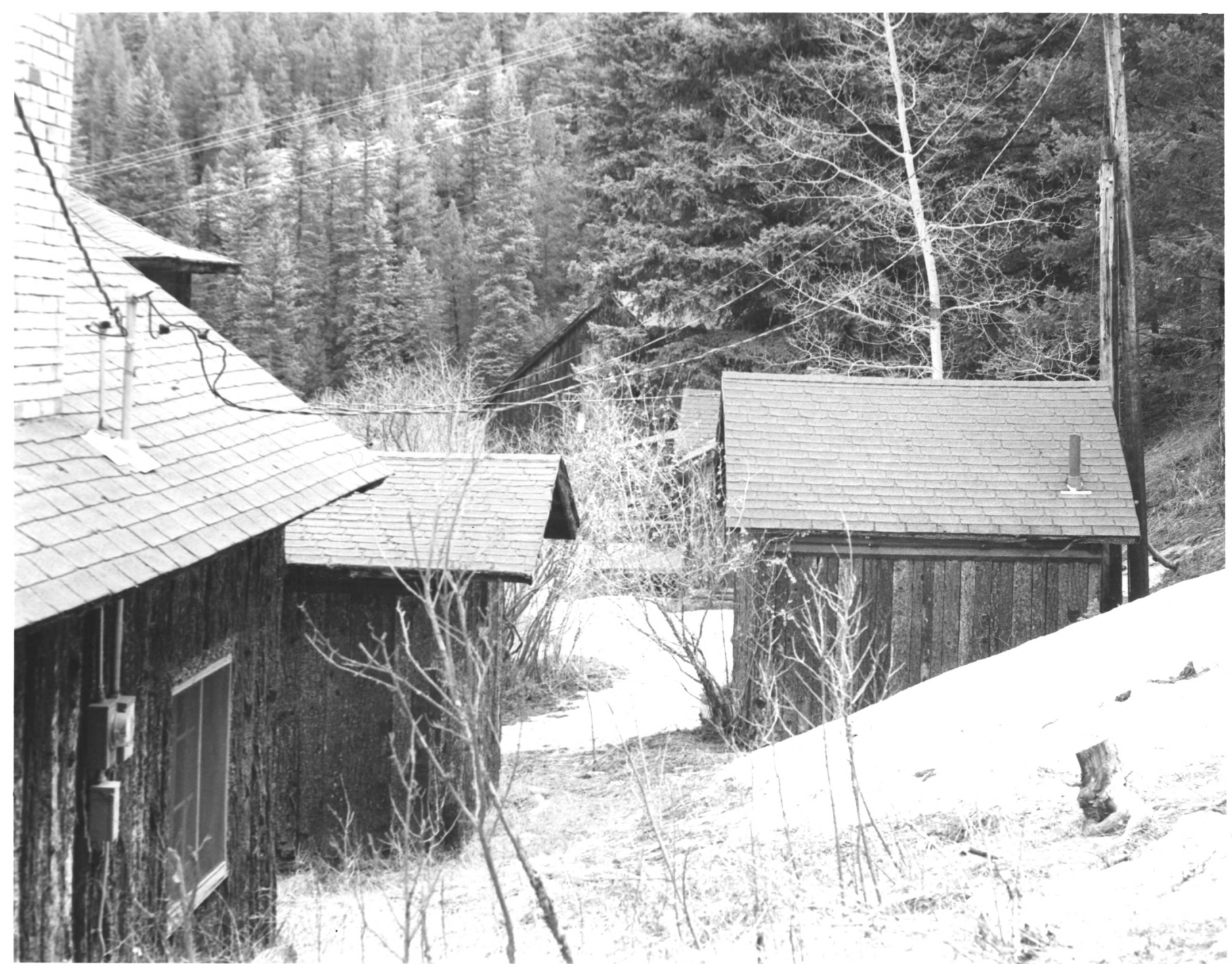
Stone Library of Conference  
Evergreen Co. 4/20/77 **MAR 14 1979**  
Photo. Sandy Crain  
looking east at Bldg. #11 **MAY # 11 1979**  
Neg. # 20 at Co. State His. Soc.

*Evergreen Conference District  
Jefferson County, Colorado*

*9 of 12*

*DOE*





South Boundary of Conference  
Evergreen Co. 4/20/77 <sup>DOE</sup>  
Photo. Sandy Craim <sup>MAY 1 1979</sup>  
looking east at back of Bld. 14  
Neg. # 8 at Co. State His. Soc.  
<sup>MAR 14 1979</sup>

*Evergreen Conference District  
Jefferson County, Colorado*

*10 of 12*



Front of Meeting House

Evergreen Co 4/20/77

Photo. Dick Crain

looking North at Bldg. # 1

Neg. # 7 at Co. State His. Soc.

DOE

MAY 1

1979

MAR 14 1979

Evergreen Conference District  
Jefferson County, Colorado

~~#11~~ 11 of 12



Overall of Evergreen Conference

Evergreen Co. 4/20 ~~MAY~~ 14 1979

Photo. Sandy Crain

looking south at Bldg. #18

Neg. #11 at Co. State His. Soc.

*Evergreen Conference District  
Jefferson County, Colorado*

12 of 12

DOE