



1048

# National Register of Historic Places Registration Form

This form is for use in nominating or requesting determinations for individual properties and districts. See instructions in National Register Bulletin, *How to Complete the National Register of Historic Places Registration Form*. If any item does not apply to the property being documented, enter "N/A" for "not applicable." For functions, architectural classification, materials, and areas of significance, enter only categories and subcategories from the instructions. **Place additional certification comments, entries, and narrative items on continuation sheets if needed (NPS Form 10-900a).**

## 1. Name of Property

historic name Elmer Baker Barn  
other names/site number N/A

## 2. Location

street & number NW4 of Section 25, T5N, R17E Cimarron Meridian  not for publication  
city or town Hooker  vicinity  
state Oklahoma code OK county Texas code 139 zip code 73945

## 3. State/Federal Agency Certification

As the designated authority under the National Historic Preservation Act, as amended,  
I hereby certify that this X nomination     request for determination of eligibility meets the documentation standards for registering properties in the National Register of Historic Places and meets the procedural and professional requirements set forth in 36 CFR Part 60.

In my opinion, the property X meets     does not meet the National Register Criteria. I recommend that this property be considered significant at the following level(s) of significance:

    national     statewide X local

*B. S. Schlemmer* *Oct 22, 2012*  
Signature of certifying official/Title Date

State or Federal agency/bureau or Tribal Government

In my opinion, the property     meets     does not meet the National Register criteria.

Signature of commenting official Date

Title State or Federal agency/bureau or Tribal Government

## 4. National Park Service Certification

I hereby certify that this property is:

entered in the National Register     determined eligible for the National Register

    determined not eligible for the National Register     removed from the National Register

    other (explain:)

*Dr. Edson H. Beall* *12.12.12*  
Signature of the Keeper Date of Action

**5. Classification**

**Ownership of Property**  
(Check as many boxes as apply.)

- private
- public - Local
- public - State
- public - Federal

**Category of Property**  
(Check only **one** box.)

- building(s)
- district
- site
- structure
- object

**Number of Resources within Property**  
(Do not include previously listed resources in the count.)

Contributing	Noncontributing	
1	0	buildings
0	0	district
0	0	site
0	0	structure
0	0	object
1	0	<b>Total</b>

**Name of related multiple property listing**  
(Enter "N/A" if property is not part of a multiple property listing)

N/A

**Number of contributing resources previously listed in the National Register**

0

**6. Function or Use**

**Historic Functions**

(Enter categories from instructions.)

AGRICULTURE: animal facility

AGRICULTURE: agricultural outbuilding

AGRICULTURE: processing

**Current Functions**

(Enter categories from instructions.)

AGRICULTURE: agricultural outbuilding

**7. Description**

**Architectural Classification**

(Enter categories from instructions.)

OTHER: barn

**Materials**

(Enter categories from instructions.)

foundation: CONCRETE

walls: WOOD: Weatherboard

roof: METAL

other:

---

### **Narrative Description**

(Describe the historic and current physical appearance of the property. Explain contributing and noncontributing resources if necessary. Begin with a **summary paragraph** that briefly describes the general characteristics of the property, such as its location, setting, size, and significant features.)

### **Summary Paragraph**

The Elmer Baker Barn is a tall, two-story, Transverse-crib barn located one mile east of Hooker, Texas County, Oklahoma. The barn is located on a farmstead south of the intersection of U.S. Highway 64 and Mile 47 Road in the NW4 of the NW4 of the NW4 of Section 25, T5N, R17E of the Cimarron Meridian. The barn is accessible from Mile 47 Road. The barn has a symmetrical, rectangular shape and measures thirty-five feet wide by forty feet long. It has a steeply-pitched gambrel roof and a large bonnet-type hay hood. The walls are clad in wooden shiplap. The foundation is a concrete slab. The floor plan conforms to the Transverse-crib plan that originated in the southern Appalachians during the early nineteenth century. This specimen was constructed by an unknown builder ca. 1900 and moved to its present location in 1906. To a remarkable degree, the interior and exterior of the barn retain their original appearance.

---

### **Narrative Description**

The Elmer Baker Barn is a tall, wooden shiplap-clad Transverse-crib barn with a steeply-pitched gambrel roof. The barn measures 40 feet long by 35 feet wide. This local landmark is visible for over two miles in all directions due to its height relative to the level, treeless terrain of its setting. The barn is located among a large ranching operation ineligible resources. The barn's original roof was made of wood shakes. All barn doors are original. Other than the 1954 installation of a steel buttress pole on the south elevation and a tin roof and lightning rods in 1965, the barn appears as it did when it was hauled to this location by teams of horses in 1906.

The west elevation of the barn faces Mile 47 Road and is the gambrel end containing the bonnet-style hay hood. Despite the large hay hood, the barn does not contain a large haymow door or ridgeline pulley system for loading loose hay. According to the present owner, the barn has never contained a haymow door or pulley system, and no evidence of such could be detected from the interior. Purlins are exposed along the eaves. High in the west gable wall are two fixed two-over-two windows. Just below the middle of the gable wall is a sliding hayloft door centered above the loft floor level that provided ventilation and movement of fodder in and out of the haymow. At ground level is a large sliding door covering the central aisle as well as a sliding door on the left (north eave side) aisle, where Elmer Baker kept a truck. On the far right side of the west elevation is an augur hole allowing access to a grain bin on the ground floor of the southwest corner of the barn where feed grains (oats and barley) were stored.

The north elevation features exposed rafter tails and a symmetrical fenestration of four fixed, two-over-two windows. An access door to a feed bin is centered between the second and third windows. The north elevation fenestration originally contained wood windows for ventilation and lighting. These were replaced in 2004 with aluminum windows since the originals had been broken, but the new ones are indistinguishable from the original windows. All other windows on the barn are original and appear identical to the new ones on the north elevation. A manual feed grain loading door is centered at ground level on the north elevation.

The east elevation contains the gable end facing the fields. Purlins are exposed along the eaves. As with the opposite end, two fixed two-over-two windows are located high in the gable wall, a sliding hayloft door is centered just above the level of the loft floor, and a large sliding door covers the central aisle.

The south elevation features exposed rafter tails and a symmetrical fenestration of five fixed two-over-two windows. A four-inch steel pipe buttresses the southwest corner of the barn and is visible from this elevation.

The interior layout of the barn conforms to the traditional Transverse-crib form of a central aisle flanked on both sides by parallel cribs, most of which were used as horse stalls. The second story of the barn contains a full, open haymow or "loft" where hay and shocked sorghum feed grains were stored.

**8. Statement of Significance**

**Applicable National Register Criteria**

(Mark "x" in one or more boxes for the criteria qualifying the property for National Register listing.)

- A Property is associated with events that have made a significant contribution to the broad patterns of our history.
- B Property is associated with the lives of persons significant in our past.
- C Property embodies the distinctive characteristics of a type, period, or method of construction or represents the work of a master, or possesses high artistic values, or represents a significant and distinguishable entity whose components lack individual distinction.
- D Property has yielded, or is likely to yield, information important in prehistory or history.

**Areas of Significance**

(Enter categories from instructions.)

Architecture

**Period of Significance**

1906-1954

**Significant Dates**

1906, 1954

**Significant Person**

(Complete only if Criterion B is marked above.)

N/A

**Cultural Affiliation**

N/A

**Architect/Builder**

Unknown

**Criteria Considerations**

(Mark "x" in all the boxes that apply.)

Property is:

- A Owned by a religious institution or used for religious purposes.
- B removed from its original location.
- C a birthplace or grave.
- D a cemetery.
- E a reconstructed building, object, or structure.
- F a commemorative property.
- G less than 50 years old or achieving significance within the past 50 years.

**Period of Significance (justification)**

The period of significance is 1906-1954. The barn was built before statehood, ca. 1900, and moved to its present location in 1906 with teams of horses from a location 6-8 miles away when the area was part of Old Beaver County, Oklahoma Territory. The period of significance lasted from the relocation date until 1954, when a steel pipe buttress was installed on the south elevation.

**Criteria Considerations (explanation, if necessary)**

N/A

**Statement of Significance Summary Paragraph** (Provide a summary paragraph that includes level of significance and applicable criteria.)

The Elmer Baker Barn is significant at the local level under Criterion C for its architectural style. It is one of the oldest and best-preserved examples of a large Transverse-crib barn dating to the state's Territorial period found in Northwest Oklahoma. This barn is Texas County's best example of a large, turn-of-the-century Transverse-crib barn as determined by a study of barns in Northwest Oklahoma in 2010-11 (Bays, 2011).

**Narrative Statement of Significance** (Provide at least one paragraph for each area of significance.)

This tall, landmark barn was constructed before Oklahoma statehood, most likely about 1900, and moved to the present site in 1906. The barn was originally located 6-8 miles to the northwest. Little else is known about the barn's first fifty years. In 1943 a family named Moore sold the property to Elmer Baker. His son, Carroll Baker, the current property owner, has lived and worked here since the age of four. The barn's appearance has remained very similar to the way it looked in 1943. The interior layout of the barn has also remained essentially the same.

The Elmer Baker Barn is a classic example of a Transverse-crib barn. Transverse-crib barns evolved as distinct folk barn in southern Appalachia during the 1810s (Jordan, 1998). The Transverse-crib barn is the single most common barn type in the Upland South. They are also the most common barn type in western Oklahoma, including Texas County, although there are many variations in size and detail (Bays, 2011). The floor plan is simple: a central aisle running parallel to the ridgeline flanked on both sides by a row of three or more square cribs, which—individually or in combination—serve as stalls, granaries, or storage space. A haymow or "loft" for hay and/or grain storage is above ground level. Transverse-crib barns are multiuse barns used for storing hay, grain, and livestock shelter. The Transverse-crib barn is easily expanded by adding pairs of cribs to a gable end. Transverse-crib barns may have any type of roof or wall cladding.

The Elmer Baker Barn represents the western extension of the Transverse-crib barn from the Upland South to the High Plains. The 2010-11 Survey of Barns in Northwest Oklahoma recorded 13 barns, including five Transverse-crib barns, three Three-Portal barns, a crib barn, a bank barn, and three unclassified barns. In terms of integrity, this specimen is the best example of a Transverse-crib barn in Texas County. It is one of the oldest surviving barns in the county and it retains the highest level of integrity of any barn surveyed in Texas County. The property is eligible for listing in the National Register of Historic Places under Criterion C for architectural merit because it demonstrates the distinctive features of the Transverse-crib barn as it has been adapted for use on the High Plains of Oklahoma.

**Developmental history/additional historic context information** (if appropriate)

The area around Hooker was settled by ranchers as early as the 1890s, but most substantial farm settlement came after the Chicago, Rock Island and Pacific Railway built a line through the area in 1902. Hooker was platted two years later. Population grew slowly until the demand for wheat during World War I attracted additional settlement. The Elmer Baker Barn likely predates the town of Hooker and has been at its present location for all but the first two years of Hooker's 108-year history. Little is known about the use of the barn during its first 40 years of service. It is known that the barn was formerly located some 6-8 miles to the northwest before being moved by teams of horses to its present location.

The primary uses of the barn since 1943 have been to shelter saddle horses and store hay and feed for a beef cattle operation. All hay stored in the barn since 1943 has been baled; loose hay may have been stored in the barn before Elmer Baker purchased it. Since 1943 baled hay has usually been loaded from a semi-tractor trailer on the west end. In addition to baled hay, the Bakers used the loft to store bundled feed, such as German millet and threshed oats and barley. Bundled feed was loaded from the east end, which was adjacent to one of the fields.

During the Bakers' tenure, only 2-3 Jersey milk cows were ever sheltered in the barn and served only for domestic use. The barn most likely was not used as a dairy facility before 1943. The Baker family kept 4-5 hogs for home use only, butchering one or two each fall, but hogs were never kept in or near the barn.

The horses sheltered in the Baker Barn after 1943 were Quarter Horses used for working cattle, not draft horses used for farm work. Elmer Baker purchased his first tractor in 1939 and his second—a Farm-All "Model M"—in 1941, so he always used a tractor on this farm (the barn most likely sheltered draft horses before 1943). Elmer Baker bought, sold and trained Quarter Horses and also used them for tending cattle on this large farm and ranch.

Baker's cattle-wheat operation involved seasonal fattening of yearling beef cattle. Each September the Bakers would travel to southeastern Colorado and purchase Hereford and Angus yearlings weighing 700-750 lbs., bring them to Texas County to fatten on winter wheat pasture and in "grow lots" until May, then haul them to Liberal, Kansas for sale. Baker could usually increase each calf's weight by 200-250 lbs. in seven months. Later Baker made a seasonal practice of hauling fattened calves to feeding operations in Wilton Junction, Iowa, where they were fed to become "prime" beef for the Chicago market. This led the Bakers to begin managing their own feedlot in 1961 to "finish" local cattle.

The size of the Baker farm and ranch was large in comparison to average landholdings elsewhere in Oklahoma. At its greatest extent, the Bakers cultivated and ranched some 3,000 acres of winter wheat, milo, and other grain sorghums. The wheat and milo were cash crops and the grain sorghums were used for cattle feed. American Quarter Horses were vitally important to the beef operation, especially when cattle would stray from the wheat pastures. For example, a blizzard in 1971 scattered cattle for miles, and Carroll Baker exhausted three horses bringing cattle back to the ranch.

This barn has been through many severe storms and high wind events during its history. The most damaging event in Carroll Baker's memory was a storm in 1954 that produced 100 mph winds. The winds inflicted serious damage to the barn. After that storm, Elmer Baker hired Wayne Thompson, a contractor in Hooker, to structurally brace the barn. Thompson installed steel braces sunken into concrete along the interior south eave-side and connected these to a single four-inch steel pipe buttress connected to a sunken concrete pier on the west corner of the south eave wall. Thomson's system has anchored this tall barn against the battering winds of the High Plains for 58 years. It proved to work through later storms, including comparable storms in the late 1970s and another in 1989. After these storms, additional structural reinforcement (2" x 6" and 2" x 12" lumber on the south wall) was added to the interior. Thompson's 1954 steel brace is the only modification visible from the exterior of the building.

---

## 9. Major Bibliographical References

---

**Bibliography** (Cite the books, articles, and other sources used in preparing this form.)

Auer, M.J. "The Preservation of Historic Barns." Preservation Briefs, No. 20. Washington, D.C.: National Park Service, n.d. Last Accessed 10 May 2012 <<http://www.nps.gov/hps/tps/briefs/brief20.htm>>

Baker, Carroll. Personal Communication 12 March 2012.

Bays, Brad A. "Thematic Survey of Historic Barns in Northwest Oklahoma." Oklahoma City: Oklahoma State Historic Preservation Office, 2011.

Calkins, Charles F. *The Barn as an Element of the Cultural Landscape of North America*. Monticello, Ill.: Vance Bibliographies, 1979.

Durand, Loyal. "Dairy Barns of Southeastern Wisconsin." *Economic Geography* 19, no. 1 (1943): 37-44.

Francaviglia, Richard V. "Western American Barns: Architectural Form and Climatic Considerations." *Yearbook of the Association of Pacific Coast Geographers* 34 (1972): 153-60.

Hart, John Fraser. "Types of Barns in the Eastern United States." *Focus* 43, no. 1 (1993): 8-17.

Haystead, Ladd, and Gilbert Fite. *The Agricultural Regions of the United States*. Norman: University of Oklahoma Press, 1955.

Horsburgh, Patrick. "Barns in Central Illinois." *Landscape* 8, no. Spring (1959): 12-13.

Jordan, Terry G. "Transverse-Crib Barns, the Upland South, and Pennsylvania Extended." *Material Culture* 30, no. Summer (1998): 5-31.

Noble, Allen G. "Barns and Square Silos in Northeast Ohio." *Pioneer America* 6 (1974): 12-21.

\_\_\_\_\_. *Wood, Brick, and Stone: The North American Settlement Landscape*. Vol. 2: Barns and Farm Structures, Amherst: University of Massachusetts Press, 1984.

Noble, Allen G., and Richard K. Cleek. *The Old Barn Book: A Field Guide to North American Barns and Other Farm Structures*. New Brunswick, N.J.: Rutgers University Press, 1995.

Schlebecker, John T. *Whereby We Thrive: A History of American Farming, 1607-1972*. Ames: The Iowa State University Press, 1975.

Vlach, John Michael. *Barns*. New York: W. W. Norton and Company and Library of Congress, Washington, D.C., 2003.

Witzel, Michael Karl. *Barns: Styles & Structures*. Edited by Ami Glazer St. Paul, MN: MBI Publishing Company, 2003.

**Previous documentation on file (NPS):**

preliminary determination of individual listing (36 CFR 67 has been requested)  
 previously listed in the National Register  
 previously determined eligible by the National Register  
 designated a National Historic Landmark  
 recorded by Historic American Buildings Survey # \_\_\_\_\_  
 recorded by Historic American Engineering Record # \_\_\_\_\_  
 recorded by Historic American Landscape Survey # \_\_\_\_\_

**Primary location of additional data:**

State Historic Preservation Office  
 Other State agency  
 Federal agency  
 Local government  
 University  
 Other  
Name of repository: \_\_\_\_\_

---

Historic Resources Survey Number (if assigned): \_\_\_\_\_

---

---

**10. Geographical Data**

---

**Acreage of Property** Less than one acre  
(Do not include previously listed resource acreage.)

**UTM References**

(Place additional UTM references on a continuation sheet.)

1 14 305679 4081783  
Zone Easting Northing

3 \_\_\_\_\_  
Zone Easting Northing

2 \_\_\_\_\_  
Zone Easting Northing

4 \_\_\_\_\_  
Zone Easting Northing

**Verbal Boundary Description** (Describe the boundaries of the property.)

The boundary includes less than one acre within the northwest quarter of Section 25, T5N, R17E of the Cimarron Meridian: Beginning at the northeast corner of the barn, extending south 35.2 feet to the southeast corner thus traveling west for 40.1 feet to the southwest corner thus travelling north for 35.2 feet to the northwest corner thus extending east to the original starting point.

**Boundary Justification** (Explain why the boundaries were selected.)

The barn is the only building, structure, or object on the farm that maintains architectural integrity and is an excellent example of a Transverse-crib barn in Texas County.



Elmer Baker Barn  
Name of Property

Texas County, Oklahoma  
County and State

---

**11. Form Prepared By**

---

name/title Brad A. Bays, Ph.D./Associate Professor of Geography  
organization Oklahoma State University date 25 May 2012  
street & number 337 Murray Hall telephone (405) 744-9171  
city or town Stillwater state OK zip code 74078-4073  
e-mail b.bays@okstate.edu

---

**Additional Documentation**

---

Submit the following items with the completed form:

- **Maps:** A **USGS map** (7.5 or 15 minute series) indicating the property's location.  
A **Sketch map** for historic districts and properties having large acreage or numerous resources. Key all photographs to this map.
- **Continuation Sheets**
- **Additional items:** (Check with the SHPO or FPO for any additional items.)

---

**Photographs:**

---

Submit clear and descriptive photographs. The size of each image must be 1600x1200 pixels at 300 ppi (pixels per inch) or larger. Key all photographs to the sketch map.

Name of Property: Elmer Baker Barn  
City or Vicinity: Hooker  
County: Texas  
Photographer: Brad A. Bays  
Date Photographed: 12 March 2012  
Description of Photograph(s) and number:

No.	Subject	Dir.
0001	north eave side and west gable end	southeast
0002	north eave side and east gable end	southwest
0003	east gable end	west
0004	south eave side and east gable end	northwest
0005	south eave side and west gable end	northeast

Elmer Baker Barn  
Name of Property

Texas County, Oklahoma  
County and State

---

**Property Owner:**

(Complete this item at the request of the SHPO or FPO.)

name \_\_\_\_\_  
street & number \_\_\_\_\_ telephone \_\_\_\_\_  
city or town \_\_\_\_\_ state \_\_\_\_\_ zip code \_\_\_\_\_

**Paperwork Reduction Act Statement:** This information is being collected for applications to the National Register of Historic Places to nominate properties for listing or determine eligibility for listing, to list properties, and to amend existing listings. Response to this request is required to obtain a benefit in accordance with the National Historic Preservation Act, as amended (16 U.S.C.460 et seq.).

**Estimated Burden Statement:** Public reporting burden for this form is estimated to average 18 hours per response including time for reviewing instructions, gathering and maintaining data, and completing and reviewing the form. Direct comments regarding this burden estimate or any aspect of this form to the Office of Planning and Performance Management, U.S. Dept. of the Interior, 1849 C. Street, NW, Washington, DC.

United States Department of the Interior  
National Park Service

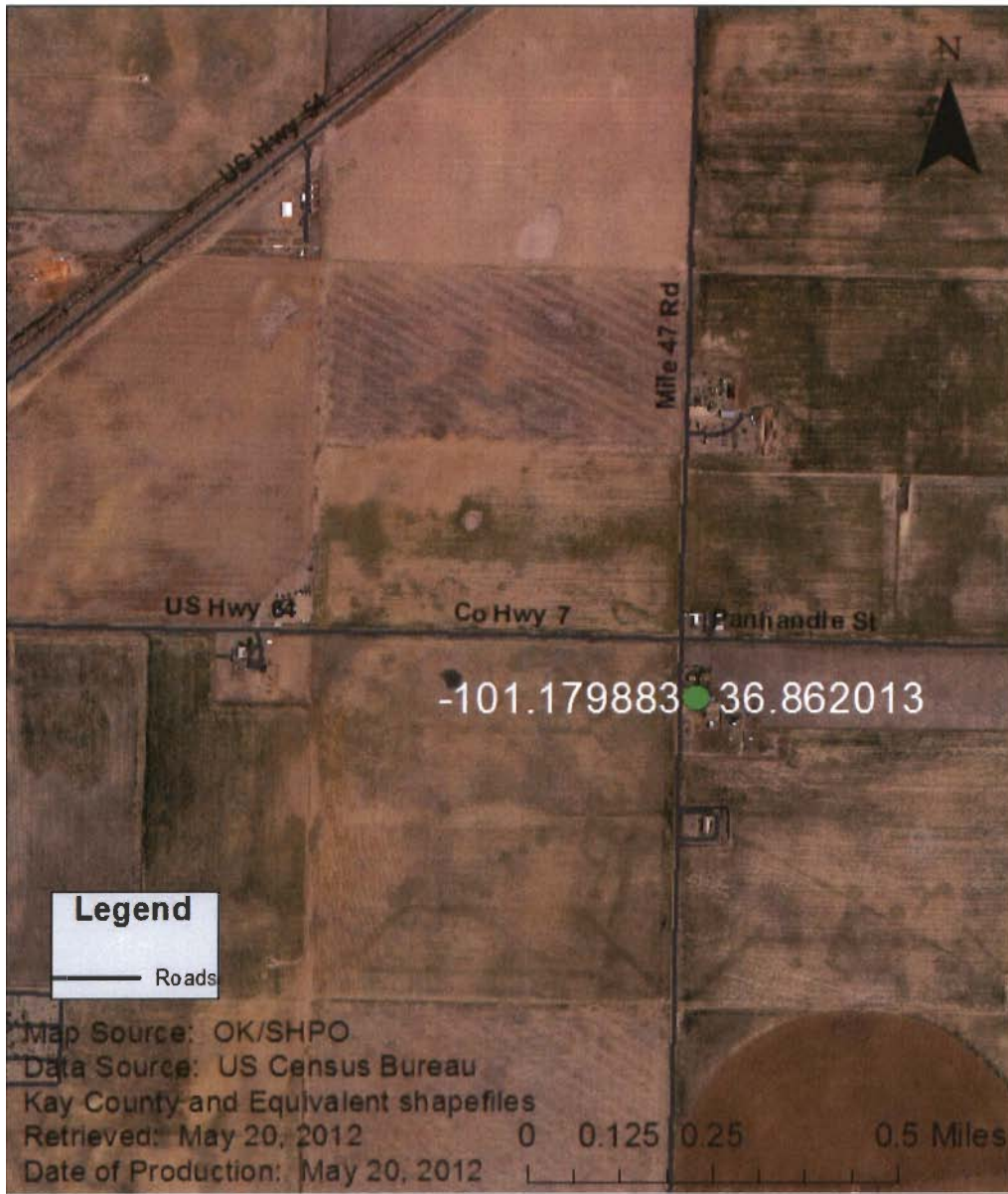
National Register of Historic Places  
Continuation Sheet

Elmer Baker Barn
Name of Property
Texas County, Oklahoma
County and State
Name of multiple listing (if applicable)

Section number Additional Documentation

Page 1

# Elmer Baker Barn, Hooker vicinity, Texas County, Oklahoma



**United States Department of the Interior**  
National Park Service

**National Register of Historic Places**  
**Continuation Sheet**

Elmer Baker Barn

Name of Property

Texas County, Oklahoma

County and State

Name of multiple listing (if applicable)

Section number Additional DocumentationPage 2**Latitude/Longitude Coordinates**

(Follow similar guidelines for entering these coordinates as for entering UTM references described on page 55, *How to Complete the National Register Registration Form*. For properties less than 10 acres, enter the lat/long coordinates for a point corresponding to the center of the property. For properties of 10 or more acres, enter three or more points that correspond to the vertices of a polygon drawn on the map. The polygon should approximately encompass the area to be registered. Add additional points below, if necessary.)

Datum: WGS84

1. Latitude: 36.862013

Longitude: -101.179883

2. Latitude:

Longitude:

3. Latitude:

Longitude:

4. Latitude:

Longitude:

United States Department of the Interior  
National Park Service

National Register of Historic Places  
Continuation Sheet

Elmer Baker Barn
Name of Property
Texas County, Oklahoma
County and State
Name of multiple listing (if applicable)

Section number Additional Documentation

Page 3

### Boundary of Elmer Baker Barn Property, Hooker vicinity, Texas County, Oklahoma



**United States Department of the Interior**  
National Park Service

**National Register of Historic Places**  
**Continuation Sheet**

Elmer Baker Barn
Name of Property
Texas County, Oklahoma
County and State
Name of multiple listing (if applicable)

Section number Additional Documentation

Page 4

**Boundary of Elmer Baker Barn Property,  
Hooker vicinity, Texas County, Oklahoma**



UNITED STATES DEPARTMENT OF THE INTERIOR  
NATIONAL PARK SERVICE

NATIONAL REGISTER OF HISTORIC PLACES  
EVALUATION/RETURN SHEET

REQUESTED ACTION: NOMINATION

PROPERTY NAME: Baker, Elmer, Barn

MULTIPLE NAME:

STATE & COUNTY: OKLAHOMA, Texas

DATE RECEIVED: 10/26/12      DATE OF PENDING LIST: 11/27/12  
DATE OF 16TH DAY: 12/12/12      DATE OF 45TH DAY: 12/12/12  
DATE OF WEEKLY LIST:

REFERENCE NUMBER: 12001040

REASONS FOR REVIEW:

APPEAL: N    DATA PROBLEM: N    LANDSCAPE: N    LESS THAN 50 YEARS: N  
OTHER: N    PDIL: N    PERIOD: N    PROGRAM UNAPPROVED: N  
REQUEST: N    SAMPLE: N    SLR DRAFT: N    NATIONAL: N

COMMENT WAIVER: N

ACCEPT     RETURN     REJECT    12-12-12 DATE

ABSTRACT/SUMMARY COMMENTS:

Entered in  
The National Register  
of  
Historic Places

RECOM./CRITERIA \_\_\_\_\_

REVIEWER \_\_\_\_\_ DISCIPLINE \_\_\_\_\_

TELEPHONE \_\_\_\_\_ DATE \_\_\_\_\_

DOCUMENTATION see attached comments Y/N see attached SLR Y/N

If a nomination is returned to the nominating authority, the nomination is no longer under consideration by the NPS.





OK - Texas County - Elmer Baker Barn - 0001



OK - Texas County - Elmer Baker Barn - 0002



OK - Texas County - Elmer Baker Barn - 0003



OK - Texas County - Elmer Baker Barn - 0004





OK - Texas County - Elmer Baker Barn - 0005

## Missing Core Documentation

<b>Property Name</b>	<b>County, State</b>	<b>Reference Number</b>
Baker, Elmer, Barn	Texas County, OK	12001040

The following Core Documentation is missing from this entry:

Nomination Form

Photographs

USGS Map



## Oklahoma Historical Society

Founded May 27, 1893

### State Historic Preservation Office

Oklahoma History Center • 800 Nazih Zuhdi Drive • Oklahoma City, OK 73105-7917  
(405) 521-6249 • Fax (405) 522-0816 • [www.okhistory.org/shpo/shpom.htm](http://www.okhistory.org/shpo/shpom.htm)

October 22, 2012

Ms. Carol Shull  
Acting Keeper of the Register  
National Park Service 2280, 8th floor  
National Register of Historic Places  
1201 "I" (Eye) Street, NW  
Washington D.C. 20005

Dear Ms. Shull:

We are pleased to transmit three National Register of Historic Places nominations for Oklahoma properties. The nominations are for the following properties:

Bennie L. Aupperle Dairy Barn, Newkirk Vicinity, Kay County  
Elmer Baker Barn, Hooker Vicinity, Texas County  
Gillespie Drilling Company Building, Cushing, Payne County

All members of the Historic Preservation Review Committee (state review board) were present for the public meeting at which each of these nominations was considered and the recommendation to the State Historic Preservation Officer was formulated. Therefore, the member possessing the requisite professional qualifications for evaluation of each nominated property participated in the recommendation's formulation.

We look forward to the results of your review. If there may be any questions, please do not hesitate to contact either Lynda S. Ozan of my staff or myself.

Sincerely,

Melvena Heisch  
Deputy State Historic  
Preservation Officer

MKH:lso

Enclosures