



1. Cedar Keys Historic and Archaeological District
2. E. E. Hale Bldg., 2nd St., Cedar Key (Levy County), FL
3. Phillip Werndli
4. 1988
5. Cedar Key Historic Commission
6. South (Main) Facade & West Elevation
7. Photo No. 1 of 44



1. Cedar Keys Historic and Archaeological District
2. Prescott Building, 210 2nd St., Cedar Key
(Levy County), FL
3. Phillip Werndli
4. 1988
5. Cedar Key Historic Commission
6. South (Main) Facade, Looking East along
Second Street.
7. Photo No. 2 of 44

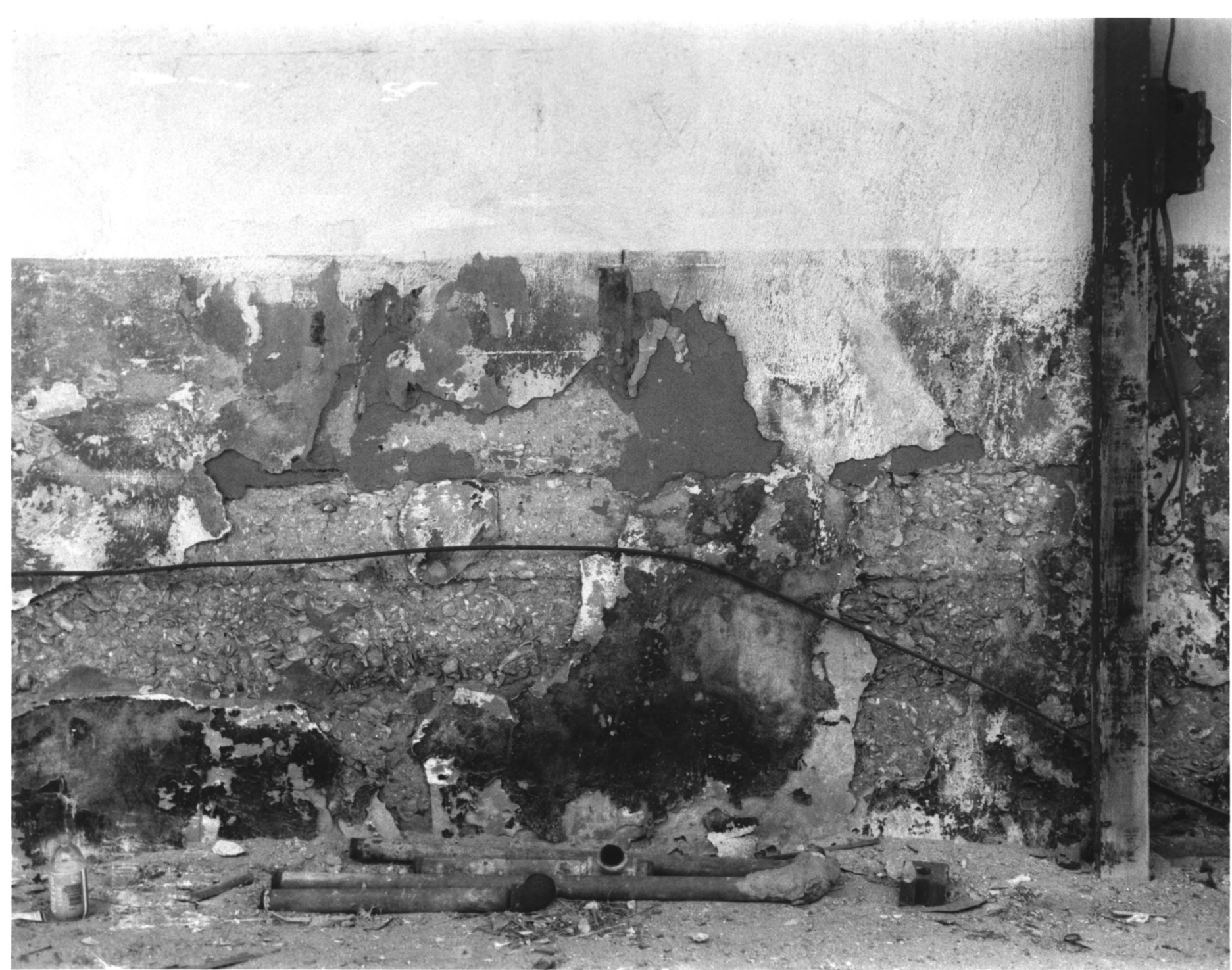


WINDY COAST RD 543-5633
Cedar Key Realty Inc

WINDY COAST RD 543-5633
Cedar Key Realty Inc

TOYOTA

1. Cedar Keys Historic and Archaeological District
2. Lutterloh Store, 2nd St., Cedar Key (Levy County), FL
3. Phillip Werndli :
4. 1988
5. Cedar Key Historic Commission
6. South (Main) Facade & West Elevation
7. Photo No. 3 of 44



1. Cedar Keys Historic and Archaeological District
2. Lutterloh Store, 2nd St., Cedar Key (Levy County), FL
3. Phillip Werndli
4. 1988
5. Cedar Key Historic Commission
6. (Detail), Tabby Concrete Construction
7. Photo No. 4 of 44



ISLAND HOTEL
SEA FOOD



1. Cedar Keys Historic and Archaeological District
2. Island Hotel, 224 2nd St., Cedar Key
(Levy County), FL
3. Phillip Werndli
4. 1988
5. Cedar Key Historic Commission
6. South (Main) Facade & West Elevation
7. Photo No. 5 of 44



THE ISLAND SHOP

ART GALLERY & THE ISLAND SHOP & SPORTSWEAR & GIFTS

The Island Shop



1. Cedar Keys Historic and Archaeological District
2. Schlemmer Grocery, 215 2nd St., Cedar Key
(Levy County), FL
3. Phillip Werndli
4. 1988
5. Cedar Key Historic Commission
6. South (Main) Facade
7. Photo No. 6 of 44

CEDAR KEY COUNTRY STORE

CEDAR KEY
COUNTRY STORE

CEDAR KEY
COUNTRY STORE

SECOND ST
10 FT



1. Cedar Keys Historic and Archaeological District
2. Masonic Lodge, 2nd St., Cedar Key (Levy County), FL
3. Phillip Werndli
4. 1988
5. Cedar Key Historic Commission
6. North (Main) Facade & West Elevation
7. Photo No. 7 of 44



1. Cedar Keys Historic and Archaeological District
2. (Non-Contributing Bldg.), 2nd St., Cedar Key
(Levy County), FL
3. Phillip Werndli
4. 1986
5. Cedar Key Historic Commission
6. North (Main) Facade
7. Photo No. 8 of 44



1. Cedar Keys Historic and Archaeological District
2. D Street (S.R. 24), Cedar Key (Levy County), FL
3. Phillip Werndli
4. 1988
5. Cedar Key Historic Commission
6. Looking South from Sixth Street
7. Photo No. 9 of 44



BEACH FRONT MOTEL
MOTEL



1. Cedar Keys Historic and Archaeological District
2. View of 1st St., Cedar Key (Levy County), FL
3. Phillip Werndli
4. 1988
5. Cedar Key Historic Commission
6. Looking West from F Street
7. Photo No. 10 of 44



1. Cedar Keys Historic and Archaeological District
2. Hodges, W.R. House, 253 2nd St., Cedar Key
(Levy County), FL
3. Phillip Werndli
4. 1988
5. Cedar Key Historic Commission
6. North (Main) Facade
7. Photo No. 11 of 44



1. Cedar Keys Historic and Archaeological District
2. White House Annex, 125 2nd St., Cedar Key
(Levy County), FL
3. Phillip Werndli
4. 1988
5. Cedar Key Historic Commission
6. North (Main) Facade
7. Photo No. 12 of 44



1. Cedar Keys Historic and Archaeological District
2. Eagle Cedar Mill House, 210 F St., Cedar Key
(Levy County), FL
3. Phillip Werndli
4. 1988
5. Cedar Key Historic Commission
6. North (Main) Facade & East Elevation
7. Photo No. 13 of 44



1. Cedar Keys Historic and Archaeological District
2. Coachman House, 36 4th St., Cedar Key
(Levy County), FL
3. Phillip Werndli
4. 1988
5. Cedar Key Historic Commission
6. West (Main) Facade
7. Photo No. 14 of 44



1. Cedar Keys Historic and Archaeological District
2. Coachman House, 36 4th St., Cedar Key
(Levy County), FL
3. Phillip Werndli
4. 1988
5. Cedar Key Historic Commission
6. (Detail), Scored Stucco over Tabby Wall
7. Photo No. 15 of 44



1. Cedar Keys Historic and Archaeological District
2. Hale-John House, 325 F St., Cedar Key
(Levy County), FL
3. Phillip Werndli
4. 1988
5. Cedar Key Historic Commission
6. South (Main) Facade
7. Photo No. 16 of 44



1. Cedar Keys Historic and Archaeological District
2. Old Public School, 44 4th St., Cedar Key
(Levy County), FL
3. Phillip Werndli
4. 1988
5. Cedar Key Historic Commission
6. North and East Elevations
7. Photo No. 17 of 44



1. Cedar Keys Historic and Archaeological District
2. United Methodist Church, 45 4th St., Cedar Key
(Levy County), FL
3. Phillip Werndli
4. 1988
5. Cedar Key Historic Commission
6. North (Main) Facade & East Elevation
7. Photo No. 18 of 44



1. Cedar Keys Historic and Archaeological District
2. Parsons Rental House, 38A 4th St., Cedar Key
(Levy County), FL
3. Phillip Werndli
4. 1988
5. Cedar Key Historic Commission
6. North (Main) Facade
7. Photo No. 19 of 44



1. Cedar Keys Historic and Archaeological District
2. Hodges Rental House, 13 4th St., Cedar Key
3. Phillip Werndli
4. 1988
5. Cedar Key Historic Commission
6. South (Main) Facade
7. Photo No. 20 of 44



209

CHRISTIE'S
GALLERY

Painting - sculpture

1. Cedar Keys Historic and Archaeological District
2. 209 6th St., Cedar Key (Levy County), FL
3. Phillip Werndli
4. 1988
5. Cedar Key Historic Commission
6. South (Main) Facade
7. Photo No. 21 of 44

FIRST BAPTIST CHURCH



1. Cedar Keys Historic and Archaeological District
2. First Baptist Church, 111 2nd St., Cedar Key
(Levy County), FL
3. Phillip Werndli
4. 1988
5. Cedar Key Historic Commission
6. South (Main) Facade
7. Photo No. 22 of 44



1. Cedar Keys Historic and Archaeological District
2. Charpia House, 317 East St., Cedar Key
(Levy County), FL
3. Phillip Werndli
4. 1988
5. Cedar Key Historic Commission
6. West (Main) Facade
7. Photo No. 23 of 44



1. Cedar Keys Historic and Archaeological District
2. #1 A Street, Cedar Key (Levy County), FL
3. Phillip Werndli
4. 1988
5. Cedar Key Historic Commission
6. West (Main) Facade
7. Photo No. 24 of 44



1. Cedar Keys Historic and Archaeological District
2. #3 & #1 A St., Cedar Key, (Levy County), FL
3. Phillip Werndli
4. 1988
5. Cedar Key Historic Commission
6. View Looking South
7. Photo No. 25 of 44



1. Cedar Keys Historic and Archaeological District
2. Streetscape, 2nd St., Cedar Key (Levy County), FL
3. Phillip Werndli
4. 1988
5. Cedar Key Historic Commission
6. View Looking East from F Street
7. Photo No. 26 of 44



FIRST ST

1. Cedar Keys Historic and Archaeological District
2. Whitman House, #6 F St., Cedar Key (Levy County), FL
3. Phillip Werndli
4. 1988
5. Cedar Key Historic Commission
6. South Elevation
7. Photo No. 27 of 44



1. Cedar Keys Historic and Archaeological District
2. Whidden House, Cedar Key 1st St., Cedar Key
(Levy County), FL
3. Phillip Werndli
4. 1988
5. Cedar Key Historic Commission
6. South (Main) Facade; Looking East
along First Street.
7. Photo No. 28 of 44



1. Cedar Keys Historic and Archaeological District
2. Streetscape, 2nd St., Cedar Key (Levy County), FL
3. Phillip Werndli
4. 1988
5. Cedar Key Historic Commission
6. Looking West from E Street
7. Photo No. 29 of 44



1. Cedar Keys Historic and Archaeological District
2. Streetscape, 4th St., Cedar Key (Levy County), FL
3. Phillip Werndli
4. 1988
5. Cedar Key Historic Commission
6. Looking East from E Street
7. Photo No. 30 of 44



1. Cedar Keys Historic and Archaeological District
2. Streetscape, F St., Cedar Key (Levy County), FL
3. Phillip Werndle
4. 1988
5. Cedar Key Historic Commission
6. Looking South from Fifth Street
7. Photo No. 31 of 44



1. Cedar Keys Historic and Archaeological District
2. Shell Midden, Vicinity of 6th & F Street, Cedar Key (Levy County), FL
3. Phillip Werndli
4. 1988
5. Cedar Key Historic Commission
6. Looking West from F Street
7. Photo No. 32 of 44



1. Cedar Keys Historic and Archaeological District
2. Lutterloh Store, 2nd St., Cedar Key (Levy County), FL
3. Phillip Werndli
4. 1988
5. Cedar Key Historic Commission
6. (Detail), Roof Cornice
7. Photo No. 33 of 44



1. Cedar Keys Historic and Archaeological District
2. Old Wood Pilings, Atsena Otie Key, Cedar Key
Vicinity (Levy County), FL
3. Phillip Werndli
4. 1988
5. Cedar Key Historic Commission
6. North Beach of Atsena Otie Key, Looking North
7. Photo No. 34 of 44



1. Cedar Keys Historic and Archaeological District
2. Remains of Suwannee Mill Tramway, Atsena Otie Key,
Cedar Key Vicintiy (Levy County), FL
3. Phillip Werndli
4. 1988
5. Cedar Key Historic Commission
6. Looking South
7. Photo No. 35 of 44



1. Cedar Keys Historic and Archaeological District
2. Shell Midden, Atsena Otie Key, Cedar Key Vicinity,
(Levy County), FL
3. Phillip Werndli
4. 1988
5. Cedar Key Historic Commission
6. Beach at Atsena Otie Key, Looking Northeast
7. Photo No. 36 of 44

ELIZABETH



WIFE OF
ELWOOD DULINCHAM

BORN
JULY 10, 1844

DIED
AUG. 31, 1877

Rest in peace
See this side of the grave

1. Cedar Keys Historic and Archaeological District
2. Gravestone, Atsena Otie Key Cemetery, Cedar Key Vicintiy (Levy County), FL
3. Phillip Werndli
4. 1988
5. Cedar Key Historic Commission
6. Looking Northwest
7. Photo No. 37 of 44



1. Cedar Keys Historic and Archaeological District
2. Gate to Cemetery Plot, Atsena Otie Key, Cedar Key
Vicintiy (Levy County), FL
3. Phillip Werndli
4. 1988
5. Cedar Key Historic Commission
6. Looking Northwest
7. Photo No. 38 of 44



1. Cedar Keys Historic and Archaeological District
2. Cistern, Atsena Otie Key, Cedar Key Vicinity
(Levy County), FL
3. Phillip Werndli
4. 1988
5. Cedar Key Historic Commission
6. Looking East
7. Photo No. 39 of 44



1. Cedar Keys Historic and Archaeological District
2. Lighthouse, Seahorse Key, Cedar Key Vicinity
(Levy County), FL
3. Phillip Werndli
4. 1988
5. Cedar Key Historic Commission
6. North Elevation
7. Photo No. 40 of 44



1. Cedar Keys Historic and Archaeological District
2. Powder Magazine, Seahorse Key, Cedar Key Vicinity
(Levy County), FL
3. Phillip Werndli
4. 1988
5. Cedar Key Historic Commission
6. North & East Elevations
7. Photo No. 41 of 44



1. Cedar Keys Historic and Archaeological District
2. Seahorse Key Dump Site, Seahorse Key, Cedar Key Vicinity (Levy County), FL
3. Phillip Werndli
4. 1988
5. Cedar Key Historic Commission
6. South Beach of Seahorse Key, Looking North
7. Photo No. 42 of 44



1. Cedar Keys Historic and Archaeological District
2. Seahorse Key Cemetery, Seahorse Key, Cedar Key
Vicinity (Levy County), FL
3. Phillip Werndli
4. 1988
5. Cedar Key Historic Commission
6. Looking West
7. Photo No. 43 of 44



1. Cedar Keys Historic and Archaeological District
2. Gardiner's Point Shell Midden, Seahorse Key,
Cedar Key Vicinity (Levy County), FL
3. Phillip Werndli
4. 1988
5. Cedar Key Historic Commission
6. Looking West
7. Photo No. 44 of 44



*#1a Cedar Keys Historic & Archaeological District

0.0000



* #2a Cedar Keys Historic & Archaeological District



~~A~~ 3 #3a Cedar Keys Historic & Archaeological District

newly added



#4a Cedar Keys Historic & Archaeological District

1. 2. 3. 4.



#5

#5a Cedar Keys Historic & Archaeological District

Key County, Florida



~~No~~

#6a Cedar Keys Historic & Archaeological District

Key CFH



#7

#7a Cedar Keys Historic & Archaeological District

Henry COFL



1991
0521

8

#8a Cedar Keys Historic & Archaeological District

Henry O. S. Jr.



#9a Cedar Keys Historic & Archaeological District

Kerry Quinn



* 10a Cedar Keys Historic & Archaeological District

Henry C. FL



#11

#11a Cedar Keys Historic & Archaeological District

havy 9 FL



#12a Cedar Keys Historic & Archaeological District

Key Co FL



~~#~~ #13a Cedar Keys Historic & Archaeological District

ham, GFL



~~14a~~ Cedar Keys Historic & Archaeological District

1 2 3 4 5 6 7 8 9 10 11 12



~~4~~ 5 #15a Cedar Keys Historic & Archaeological District

Lower Level



H/V #16a Cedar Keys Historic & Archaeological District

Lawson



~~#~~ #17a Cedar Keys Historic & Archaeological District

Henry C. F. L.



#18a Cedar Keys Historic & Archaeological District

CONF



~~✓~~ ✓ #19a Cedar Keys Historic & Archaeological District

Lower 211



CEDAR KEY
HIGH SCHOOL

#29 #20a Cedar Keys Historic & Archaeological District

Key Center



DS

COSTA KEY
FISH & OYSTER CO.
ICE
STONE CRABS
SHRIMP
SPINICE MULLET
WALLE CRAB
MUD CRAB

~~#2~~ #21a Cedar Keys Historic & Archaeological District

Key, FL



~~✓✓~~ #22a Cedar Keys Historic & Archaeological District



WINE CHEESE BEER ICE

Chickadee
B • B • Q BEEF FRIED CHICKEN



#23a Cedar Keys Historic & Archaeological District

Key Club



~~#24~~ #24a Cedar Keys Historic & Archaeological District

Howe Camp



~~4~~ #25a Cedar Keys Historic & Archaeological District



2 ~~#~~26a Cedar Keys Historic & Archaeological District

Henry O. F. H.