



JAN 29 1981

U.S.

Post Office, Berkeley CA 94701
Main (north) facade--Architect &
Engineer, October 1915

Alameda Co.

copy neg., Berkeley Architectural
Heriatge Assn, Box 7066, Berkeley

DEC 19 1980 94707

1 of 18



UNITED STATES POST OFFICE

City of
Salem, Ore

JAN 29 1981

U.S. Post Office, 2000 Allston Way, Berkeley CA
North facade, from NE -- April 1980
B. Marvin, 2646 Claremont Av., Berkeley CA 94705

DEC 19 1980

Alameda CO.

2 of 18



U.S.

Post Office, 2000 Allston Way,
Berkeley, Cal. 94701.

West elevation of original
structure and 1931 addition.

Photo, June 1980, by David
Close.

DEC 19 1980

3 of 18

Alameda Co.

1981



JAN 29 1981

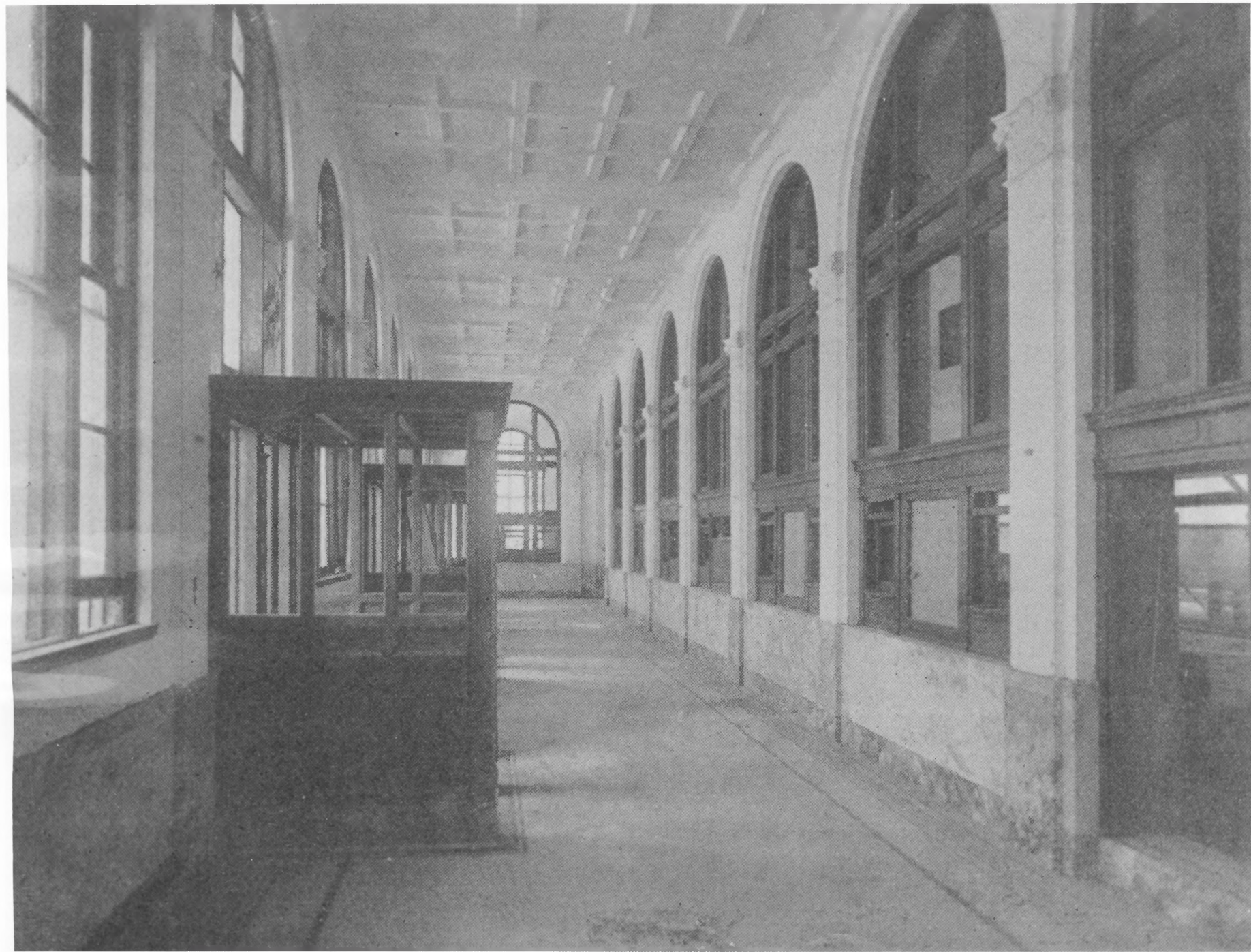
U.S.

Post Office, 2000 Allston Way, Berkeley CA 94701
Loggia along N facade, looking E -- April 1980
B. Marvin, 2646 Claremont, Berkeley CA 94705

Alameda co.

DEC 19 1980

4 of 18



U.S.

Post Office, Berkeley CA 94701
Lobby, looking east--Architect &
Engineer, Oct. 1915

copy neg., Berkeley Architectural
Heritage Assn., Box 7066, 94707

DEC 19 1980

Alameda Co.

5 of 18

JAN 29 1981



U.S.

Post Office, 2000 Allston Way, Berkeley CA 94701

Lobby, looking east -- April 1980

B. Marvin, 2646 Claremont, Berkeley CA 94705

6 of 18

DEC 19 1980

Alameda Co.

JAN 29 1981



GIFT

For the Men of U.S.

For the Men of U.S.

U.S. Post Office, 2000 Allston Way, Berkeley CA 94701
Lobby & vestibule, looking NE - April 1980
B. Marvin, 2646 Claremont, Berkeley CA 94705
7 of 18 DEC 19 1980

Alameda Co.

JAN 29 1981



EXIT

STIQUE

EXIT

JAN 29 1981

U.S. Post Office, 2000 Allston Way, Berkeley CA 94701
Vestibule at center door — April 1980
B. Marvin, 2646 Claremont, Berkeley CA 94705
8 J 18 DEC 19 1980

Alameda CO.



POSTMASTER



SER
MOVIE

U.S.

Post Office, 2000 Allston Way, Berkeley CA 94701

West end of lobby: Postmaster's office & WPA

mural — April 1980 **DEC 19 1980**

B. Marvin, 2646 Claremont, Berkeley Ca 94705

9 7 18

JAN 29 1981

Alameda Co.



POSTMASTER

JAN 29 1981

U.S. Post Office, 2000 Allston Way, Berkeley CA 94701
Postmaster's door, W end of lobby - April 1980
B. Marvin, 2646 Claremont Av., Berkeley CA 94705

10 of 18

DEC 19 1980

Alameda Co.



NO FEEDING BIRDS

NO FEEDING BIRDS

NO FEEDING BIRDS

PLEASE WAIT HERE

PLEASE WAIT HERE

U.S.

Post Office, 2000 Allston Way, Berkeley CA 94701

Service windows, E end of lobby - April 1980

B. Marvin, 2646 Claremont, Berkeley CA 94705

11 7 18

DEC 19 1980

JAN 29 1981

Alameda Co.



6

BULLETIN

GENERAL DELIVERY
NORTHWEST FLOOR

POSTAGE
PAID BY THE
RECEIVER

MAIL

MAIL

JAN 29 1981

U.S.

Post Office, 2000 Allston Way, Berkeley CA 94701

Service window, S wall of lobby - April 1980

B. Marvin, 2646 Claremont, Berkeley CA 94705

12 of 18

DEC 19 1980

Alameda Co.

JAN 29 1981

U.S.

Post Office, 2000 Allston Way, Berkeley CA 94701
Service windows, E end of lobby - April 1980
B. Marvin, 2646 Claremont, Berkeley CA 94705

13 of 18

DEC 19 1980

Alameda Co.



N

DEPOSIT COIN

PRESS BUTTON TO RETURN COIN

IPS

25c
QUARTER ONLY

10	1	1
10	1	1

COIN RETURN

JAN 29 1981

U.S.

Post Office, 2000 Allston Way, Berkeley CA 94701
Service window, S wall of lobby - April 1980
B. Marvin, 2646 Claremont, Berkeley CA 94705

Alameda Co.

14 of 18

DEC 19 1980



U.S.

Post Office, 2000 Allston Way,
Berkeley CA 94701 - April 1980
Lock boxes, S wall of lobby
B. Marvin, 2646 Claremont, 94705

15 7 18 DEC 19 1980

Alameda Co.

JAN 29 1981



JAN 29 1981

U.S.

Alameda Co

Post Office, 2000 Allston Way,
Berkeley, Cal. 94701. Public
Stairway on west side of bldg.
View looking down from 2nd
floor. Photo, June 1980, by
David Close. **DEC 19 1980**

16 of 18



JAN 29 1981

U.S. Post Office, 2000 Allston Way, Berkeley CA 94701
Bas relief at east end of loggia - April 1980
B. Marvin, 2646 Claremont, Berkeley CA 94705

17 of 18 DEC 19 1980

Alameda Co.

Berkeley

Pedro Fages and Fray Juan Crespi
first white men to set feet on
land now Berkeley. 1770-1772.

Luis Maria Peralta,
young soldier, Anza Expedition
becomes first land owner.

"Rancho San Antonio"

1820.

his son, Jose Dominga
is first resident.

American settlers, squatters,
lease-holders, hunters arrive
about - 1850 -

Town selected for College Site

1858.

University dedicated 1860.

Town named after Bishop G. Berkeley

1866.

First Post Office established
in Dr. Merrill's drug store 1877.



Painted by - Suzanne Scheuer

Treasury Relief Art Project

1936-'37

JAN 29 1981

U.S. Post Office, 2000 Allston Way, Berkeley CA 94701
Inscription on mural, west end of lobby - Ap. '80
B. Marvin, 2646 Claremont, Berkeley CA 94705
18 7 18 DEC 19 1980

Alameda Co.