



**NATIONAL REGISTER OF HISTORIC PLACES  
PROPERTY PHOTOGRAPH FORM**

*(Type all entries - attach to or enclose with photograph)*

**1. NAME**

COMMON

J. P. Brown

AND/OR HISTORIC

J. P. Brown house

NUMERIC CODE (Assigned by NPS)

APR 4 1975

**2. LOCATION**

STATE

Kansas

COUNTY

Atchison

TOWN

Atchison

STREET AND NUMBER

805 North Fourth St.

**3. PHOTO REFERENCE**

PHOTO CREDIT

Staff, Kansas State  
Historical Society

DATE

October 2, 1974

NEGATIVE FILED AT

Historic Sites Survey, Kansas  
State Historical Society

**4. IDENTIFICATION**

DESCRIBE VIEW, DIRECTION, ETC.

View of the J. P. Brown house from the east-southeast, showing the east front and part of the south side. Features which are visible in this photo include the northeast corner tower with its dormers and decorative finials, the elaborate gable trim on the south side, the ornamental railing atop the front porch and a portion of the stone wall which surrounds the property.

# 1084

**PROPERTY OF THE NATIONAL REGISTER**

Ka6 (7)



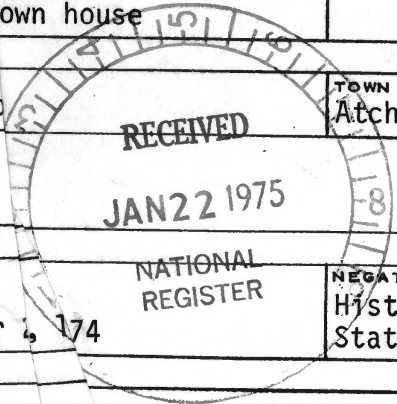
UNITED STATES DEPARTMENT OF THE INTERIOR  
NATIONAL PARK SERVICE

NATIONAL REGISTER OF HISTORIC PLACES  
PROPERTY PHOTOGRAPH FORM

(Type all entries attach to or enclose with photograph)

1. NAME		
COMMON	AND/OR HISTORIC	NUMERIC CODE (Assigned by NPS)
	J. P. Brown house	APR 14 1975

2. LOCATION		
STATE	COUNTY	TOWN
Kansas	Atchison	Atchison
STREET AND NUMBER		
805 North Fourth St.		



3. PHOTO REFERENCE		
PHOTO CREDIT	DATE	NEGATIVE FILED AT
Staff, Kansas State Historical Society	October 4, 1974	Historic Sites Survey, Kansas State Historical Society

4. IDENTIFICATION  
DESCRIBE VIEW, DIRECTION, ETC.

View of the J. P. Brown house from the northeast, showing the north side and part of the east. All window openings have the same arched lintels of limestone and brick.

#2034

PROPERTY OF THE NATIONAL REGISTER



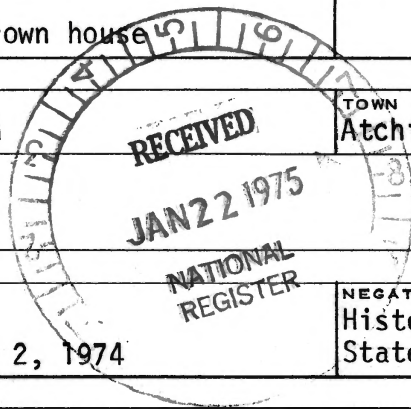


UNITED STATES DEPARTMENT OF THE INTERIOR  
NATIONAL PARK SERVICE

NATIONAL REGISTER OF HISTORIC PLACES  
PROPERTY PHOTOGRAPH FORM

(Type all entries - attach to or enclose with photograph)

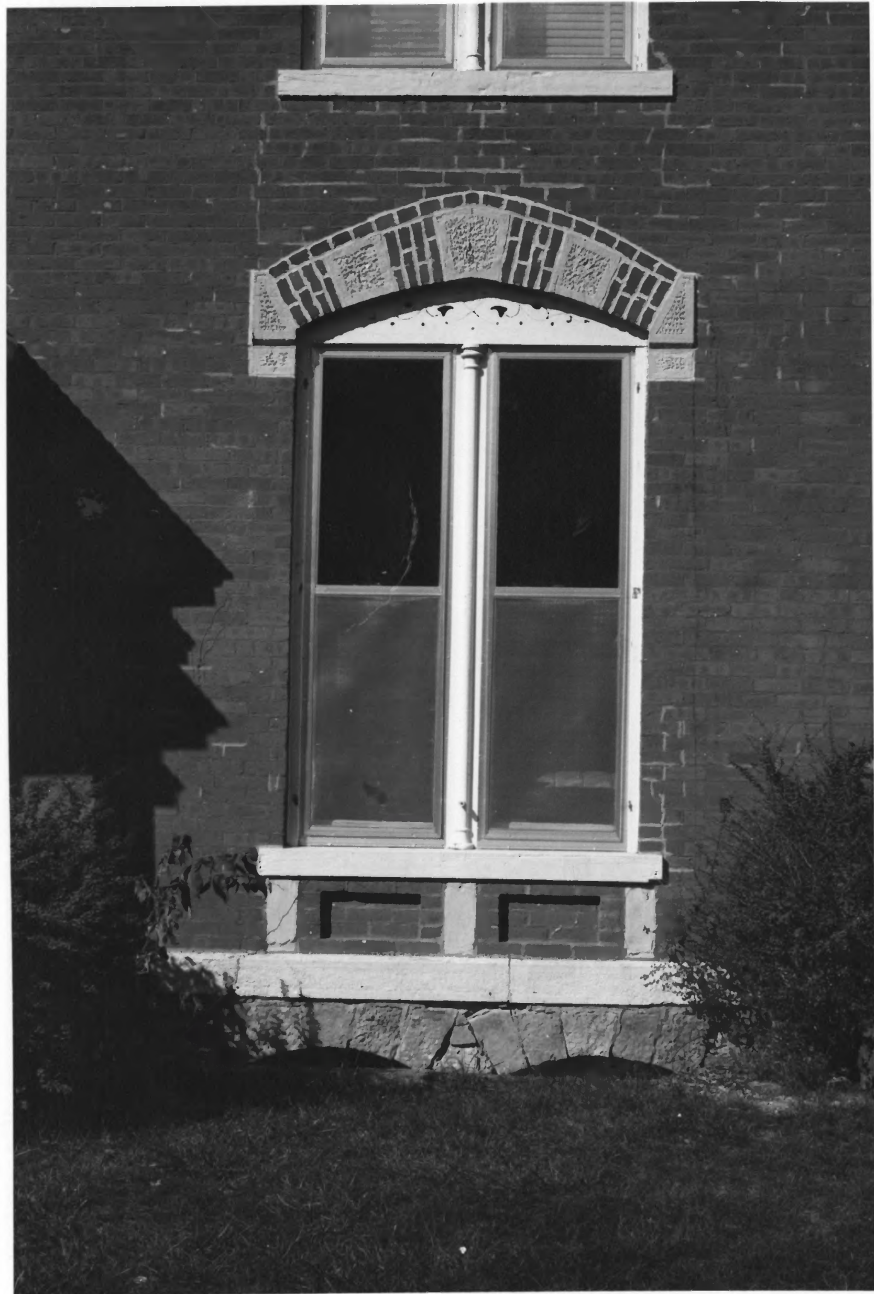
<b>1. NAME</b>		
COMMON	AND/OR HISTORIC	NUMERIC CODE (Assigned by NPS)
	J. P. Brown house	APR 14 1975
<b>2. LOCATION</b>		
STATE	COUNTY	TOWN
Kansas	Atchison	Atchison
STREET AND NUMBER		
805 North Fourth St.		
<b>3. PHOTO REFERENCE</b>		
PHOTO CREDIT	DATE	NEGATIVE FILED AT
Staff, Kansas State Historical Society	October 2, 1974	Historic Sites Survey, Kansas State Historical Society
<b>4. IDENTIFICATION</b>		
DESCRIBE VIEW, DIRECTION, ETC.		



View from the southeast showing a portion of the south side of the J. P. Brown house. Most of the changes which have been made to the structure are visible in this view: the enclosing of the first floor back porch, the addition of the second floor porch, the replacement of the front porch.

PROPERTY OF THE NATIONAL REGISTER

#374

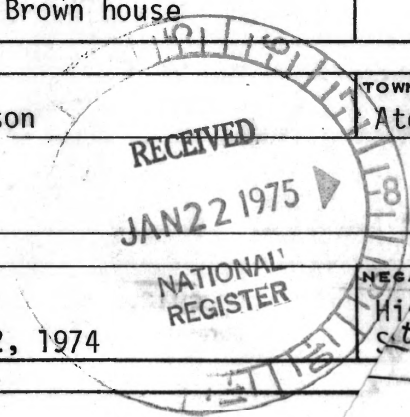


UNITED STATES DEPARTMENT OF THE INTERIOR  
NATIONAL PARK SERVICE

**NATIONAL REGISTER OF HISTORIC PLACES  
PROPERTY PHOTOGRAPH FORM**

*(Type all entries - attach to or enclose with photograph)*

<b>1. NAME</b>		<b>NUMERIC CODE (Assigned by NPS)</b>
COMMON	AND/OR HISTORIC	
	J. P. Brown house	APR 14 1975
<b>2. LOCATION</b>		
STATE	COUNTY	TOWN
Kansas	Atchison	Atchison
STREET AND NUMBER		
805 North Fourth St.		
<b>3. PHOTO REFERENCE</b>		
PHOTO CREDIT	DATE	NEGATIVE FILED
Staff, Kansas State Historical Society	Oct. 2, 1974	Historic Sites Historical Society
<b>4. IDENTIFICATION</b>		
DESCRIBE VIEW, DIRECTION, ETC.		



View from the east of a front window of the J. P. Brown house, showing the lintel of stone and brick, the center column and other window tails.

**PROPERTY OF THE NATIONAL REGISTER**

#4034