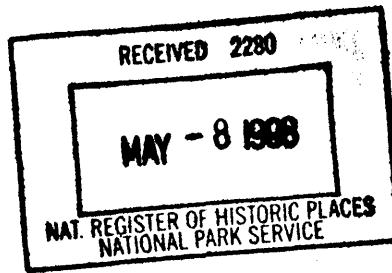


United States Department of the Interior
National Park Service



627

National Register of Historic Places
Registration Form

This form is for use in nominating or requesting determinations for individual properties and districts. See instructions in *How to Complete the National Register of Historic Places Registration Form* (National Register Bulletin 16A). Complete each item by marking "x" in the appropriate box or by entering the information requested. If an item does not apply to the property being documented, enter "N/A" for "not applicable." For functions, architectural classification, materials, and areas of significance, enter only categories and subcategories from the instructions. Place additional entries and narrative items on continuation sheets (NPS Form 10-900a). Use a typewriter, word processor, or computer, to complete all items.

1. Name of Property

historic name Hargadine Cemetery
other names/site number N/A

2. Location

street & number Sheridan and Walnut Streets N/A not for publication
city or town Ashland N/A vicinity
state Oregon code OR county Jackson code 029 zip code 97520

3. State/Federal Agency Certification

As the designated authority under the National Historic Preservation Act, as amended, I hereby certify that this nomination request for determination of eligibility meets the documentation standards for registering properties in the National Register of Historic Places and meets the procedural and professional requirements set forth in 36 CFR Part 60. In my opinion, the property meets does not meet the National Register criteria. I recommend that this property be considered significant nationally statewide locally. (See continuation sheet for additional comments.)
James Hamrick April 25, 1998
Signature of certifying official/Title Deputy SHPO Date
Oregon State Historic Preservation Office
State of Federal agency and bureau

In my opinion, the property meets does not meet the National Register criteria. (See continuation sheet for additional comments.)

Signature of certifying official/Title Date

State or Federal agency and bureau

4. National Park Service Certification

I hereby certify that the property is:
 entered in the National Register. See continuation sheet.
 determined eligible for the National Register See continuation sheet.
 determined not eligible for the National Register.
 removed from the National Register.
 other, (explain): _____

Edson A. Beall Signature of the Keeper 6-3-98 Date of Action

**United States Department of the Interior
National Park Service**

**National Register of Historic Places
Continuation Sheet**

Section number 3 Page 1

HARGADINE CEMETERY (1867-1910)

HISTORIC CEMETERIES OF ASHLAND, OREGON AND ENVIRONS 1851-1925 MPS

Sheridan and Walnut Streets

Ashland, Jackson County, Oregon

COMMENTS OF THE STATE HISTORIC PRESERVATION OFFICE

In 1994, the City of Ashland contracted with consultant Katherine Atwood to document the historic cemeteries in the city and environs with the object of determining whether the burial grounds would meet criteria of the National Register as a group related by common themes. The result was the Historic Cemeteries of Ashland, Oregon and Environs Multiple Property Submission. The context and two cemeteries under the City's care, namely, Ashland Cemetery and Mountain View Cemetery, were approved for nomination and duly listed in 1995. Hargadine Cemetery represents the third municipally-owned cemetery proposed for listing under this context. Two other potentially eligible cemeteries, the Hill-Dunn Cemetery and the Mount Vernon Cemetery, lie outside the city limits.

By their siting, internal arrangement, and interments, the intact burial grounds were expected to reflect significantly the pattern of settlement in the upper Bear Creek Valley. The cemeteries were held to meet Criteria Consideration D relating to the normal exclusion of burial places from National Register listings as well as Criterion A in the area of exploration and settlement. Additionally, there was potential for eligibility under Criterion C for distinction as developed landscapes.

The overall period of significance for the multiple property submission extends from 1851, date of the earliest known settlement era burial, to 1925, the date by which most of the pioneer generation had been interred.

The essential registration requirements under the submission are that 1) the interments and monuments fall within the period 1851-1925, 2) the cemetery landscapes, including gravemarkers, circulation systems, and buildings, retain their integrity, and 3) the grounds hold the last resting places of individuals important to the area's settlement and upbuilding. Hargadine Cemetery of Ashland meets these essential requirements by unanimous recommendation of the State Advisory Committee on Historic Preservation in action of February 13, 1998.

**United States Department of the Interior
National Park Service****National Register of Historic Places
Continuation Sheet**Section number 3 Page 2

The current status of Hargadine Cemetery represents a familiar pattern except that the City's jurisdiction in this case was ratified by State legislation. After the Hargadine Cemetery Association disbanded, the City was urged to take over comprehensive stewardship responsibilities on a regular basis. In due course, a bill was passed by the Oregon Legislature in 1989 to authorize the City to take title to the cemetery of just under one-and-a-half acres. The cemetery is located off North Main Street at the north entrance to town and is situated on the northeasterly slope of an oak-studded knoll overlooking the Bear Creek Valley. The location is on the divide between Wright's creek and Ashland Creek drainages.

This cemetery was established as a family graveyard on land owned by James Haworth that is now within the corporate limits of Ashland. The first known burials at this place occurred in December of 1867 when Haworth accommodated gravesites for the children of Robert and Martha Hargadine and Allen and Sarah Farnham. In the following year, Haworth deeded a little over an acre to the families in trust. In 1870, the land was sold to W. C. Myer, who platted a subdivision around it. By 1898, the family graveyard had fully evolved as a community cemetery and was taken over and platted by the Hargadine Cemetery Association, which functioned until 1968.

A voter-approved charter amendment in 1928 had authorized the City to levy a tax for perpetual care of cemeteries in municipal ownership. The Hargadine Cemetery Association had sought to transfer its title to the City shortly after that pivotal event. But, caught in the onset of economic depression, the City declined the title, assuming instead limited responsibility for maintenance of a number of individual gravesites because certain families contributed to the municipal cemetery care fund. In later years, as resources waned, Hargadine Cemetery Association was given the City's approval to promote perpetual care agreements for income. Finally, in 1968, the fading association cashed out to the City of Ashland. The State legislation of 1989 validated the transfer of title.

The setting of the cemetery is notably intact and is characterized by an overstory of native black and white oaks, ponderosa pine, and madrone along with native grasses and a variety of historic ornamental plantings. Together with its grid layout, the cemetery landscape is counted a separately contributing resource. A historic post and wire fence of 1910, which replaced earlier boundary fencing, is counted a contributing structure.

The well-preserved array of gravemarkers is counted a collective contributing feature. The markers are characteristic of late Victorian funerary monumentation, including tablets, shafts, and ledgers of imported marble, granite and local sandstone. Notable among the interments are the

**United States Department of the Interior
National Park Service**

**National Register of Historic Places
Continuation Sheet**

Section number 3 Page 3

heads of the cemetery's founding families, pioneer mercantilist and industrialist Robert Hargadine and the miller Allen Farnham. There are also the graves of pioneer settler Asa Fordyce and the subdivision platter W. C. Myer.

Interments in the community cemetery intensified as Ashland grew in its railroad era heyday and Ashland Cemetery, situated closer to the center of town, filled. This document tracks improvements made by the Hargadine Cemetery Association from 1898 onward and documents the work of James and Ann Hill Russell and James Carr Whipp, local carvers who were active between 1865 and 1915.

Among the interesting gravemarkers in Hargadine cemetery from an aesthetic point of view are the three ledger-style monuments in the Butler family plot that have couch-like bases decorated with scrolls and anthemion motifs characteristic of Greek Revival decoration. The flat bandings and stylized scroll work is reminiscent of the kind of furniture design and decoration promulgated in the pattern books of John Hall, Baltimore architect and cabinetmaker, around 1840.

5. Classification

Ownership of Property (Check as many boxes as apply)

- private, public-local, public-State, public-Federal

Category of Property (Check only one box)

- building(s), district, site, structure, object

Number of Resources within Property

(Do not include previously listed resources in the count.)

Table with columns: Contributing, Noncontributing, buildings, sites, structures, objects, Total. Includes entries for cemetery landscape, boundary fence, and gravemarkers.

Name of related multiple property listing

(Enter "N/A" if property is not part of a multiple property listing.)

Historic Cemeteries of Ashland, Oregon and Environs 1851-1925

Number of contributing resources previously listed in the National Register

0

6. Function or Use

Historic Functions

(Enter categories from instructions)

FUNERARY: Cemetery

Current Functions

(Enter categories from instructions)

FUNERARY: Cemetery

7. Description

Architectural Classification

(Enter categories from instructions)

No Style: Cemetery

Materials

(Enter categories from instructions)

foundation, walls, roof, other Monuments: Marble, Granite, Sandstone, Metal

Narrative Description

(Describe the historic and current condition of the property on one or more continuation sheets.)

Please see Continuation Sheets

United States Department of the Interior
National Park Service

NATIONAL REGISTER OF HISTORIC PLACES CONTINUATION SHEET

Section 7 Page 1

Hargadine Cemetery
name of property
Jackson, Oregon
county and State

Summary Description

The Hargadine Cemetery, officially established in 1868, is situated within the corporate limits of Ashland, Oregon in Jackson County. Approximately one and one-half acres in size, the graveyard is rectangular in shape, cohesive, and exhibits monumentation of range and variety. Simple headstones as well as prominent monuments mark the graves of significant early Ashland citizens. Several markers represent the work of James and Ann Hill Russell, and of James Carr Whipp, prominent carvers in the southern Oregon area. Hargadine Cemetery retains overall integrity in its location, plan, setting, feeling and associations. The burial ground successfully conveys its important period of use, 1867 to 1910, when many first generation settlers of Ashland and its environs were interred there. Until the City assumed responsibility for it in 1989, Hargadine Cemetery remained the oldest privately owned cemetery in Ashland.

Setting

A linear city, Ashland, Oregon, covers an area approximately four and one-half miles long and one and two-third miles wide. A modified grid street pattern reveals the influence of landforms, stream courses, railroad location and main travel arteries within the corporate limits. North Main Street and Siskiyou Boulevard form main arterial routes that extend the length of the city. Highway 66 intersects Siskiyou Boulevard and leads to Interstate Five and farther east to Klamath Falls, Oregon. East Main Street, another arterial route, extends from the city center to Highway 66.

Hargadine Cemetery is located near Ashland's northwesterly city limits on land that retains a natural, gentle, northerly slope. Bordered by Sheridan Street on the south and by hillside terrain on the east, north and west, the cemetery overlooks the Bear Creek Valley and the Cascade

United States Department of the Interior
National Park Service

NATIONAL REGISTER OF HISTORIC PLACES CONTINUATION SHEET

Section 7 Page 2

Hargadine Cemetery
name of property
Jackson, Oregon
county and State

foothills. Residences have been constructed on nearby streets and on the hill below the burial ground.

Description

Hargadine Cemetery exhibits the expected characteristics of a burial ground in a small western community settled between 1850 and 1880. Recorded burial dates range between 1867 and the present day. The cemetery, which began as a family burial ground on a former donation land claim, may contain graves that predate the first recorded burial.

Hargadine Cemetery is located in Township 39 South, Range 1 East, W.M. Section 5BD, Tax Lot 600. Comprised of 1.47 acres, the cemetery's original grid plan is retained on the sloping site. An unpaved drive that runs east to west enters the cemetery from Sheridan Street and segments the property. The burial lots, many of which are defined by low concrete or sandstone coping, measure approximately ten by twenty feet. The graves are arranged in rows with headstones oriented from east to west.

The Hargadine Cemetery grounds clearly exhibit the characteristics of a north slope that has been kept clear of lower story vegetation. Similar grassland savannas, which were typical in the mid-19th century upper Bear Creek region, have largely disappeared. The cemetery's array of native black and white oaks, (*Quercus kelloggii* and *quercus garryana*), constitutes an important grouping of these trees within the city limits. Ponderosa pine (*Pinus ponderosa*), madrone (*Arbutus menziessii*), and mountain-mahogany (*Cercocarpus betuloides*), comprise additional native trees. Other trees include a large Arizona cypress, an English hawthorne, and arborvitae. Old lilacs, abelias, and roses are planted throughout the cemetery. Apaeceae (*Lomatium dissectum*), a native, old growth herb, grows in profusion along the northern boundary.¹

United States Department of the Interior
National Park Service

NATIONAL REGISTER OF HISTORIC PLACES CONTINUATION SHEET

Section 7 Page 3

Hargadine Cemetery
name of property
Jackson, Oregon
county and State

Built improvements within the Hargadine Cemetery include substantial remnants of a post-and-wire fence on the north and east boundaries. This fence, which cemetery records indicate was constructed in 1910, replaced an earlier structure. A wooden flagpole stands near the southerly boundary of the property.

Headstones in Hargadine Cemetery reflect the vertical density and embellishment representative of late 19th century community cemeteries. In the years after initial settlement in 1852, Ashland gained citizens with a range of economic means as well as a variety of social and religious connections. Residents' financial status and their personal beliefs influenced the kinds of gravemarkers they chose. By 1884, Ashland monument makers' access to materials shipped by railroad broadened the selection of materials available for carving.

Monumentation within Hargadine Cemetery is found in various sizes and degrees of ornamentation. The headstones are made of marble or quarried granite obtained in various locations. In addition to using imported Vermont and Italian marbles, Ashland monument makers employed local marble and granite. Among the sites frequently tapped were Marble Mountain in Josephine County and the Tolman, Praytor and Blair granite quarries near Ashland.

The headstones range in size and design from small plain gravemarkers and bevel markers to larger tablets, monuments and ledger markers. The latter type is represented in a set of three that denotes the graves of the Butler and Thompson families. The variety of monument types and embellishment is due partly to the skills of master carvers James and Ann Hill Russell, whose work spanned a fifty-year period (1865-1915) in Ashland, and to the work of John Carr Whipp, who worked in the area from 1884 to about 1905.

United States Department of the Interior
National Park Service

NATIONAL REGISTER OF HISTORIC PLACES CONTINUATION SHEET

Section 7 Page 4

Hargadine Cemetery
name of property
Jackson, Oregon
county and State

Carvers frequently used local sandstone for headstone bases and for low coping around individual lots. Turned work, chamfered corners, columns, beveled tops, urns, flat carving and bas-relief designs appear on many of the markers. Ornamentation is expressed in various forms typical of the period, including fraternal symbols, garlands and single flowers, egg-and-dart detail, and clasped hands. Carvers used both raised and incised lettering styles.

Integrity

The Hargadine Cemetery retains its original character as a small private cemetery with an intact setting and plan. Trees in the cemetery reflect the land's appearance at the time the burial ground was established and constitute a rare enclave of native vegetation within the city boundaries. The burial ground's monumentation, range, and variety is intact. Because the cemetery was largely filled during the historic period, integrity has not been adversely affected by the addition of more recent grave-markers. Most markers appear to be in good condition throughout the cemetery, although occasional vandalism has occurred through the years.

The City of Ashland has maintained Hargadine Cemetery since obtaining official title to the property in 1989. (City employees have cared for sixteen graves under perpetual care agreements established earlier in the century).

In feeling and association Hargadine Cemetery successfully represents community cemeteries of the late 19th and early 20th centuries. The cemetery remains a place associated with the first generation of settlers in Ashland and provides a link between the early period of settlement and the rapid development that occurred following the railroad's arrival in 1884.

United States Department of the Interior
National Park Service

**NATIONAL REGISTER OF HISTORIC PLACES
CONTINUATION SHEET**

Section 7 Page 5

Hargadine Cemetery
name of property
Jackson, Oregon
county and State

Endnotes

¹ Donn Todt, Lithia Park Horticulturist, City of Ashland, Interview at Hargadine Cemetery, October 31, 1997

Name of Property

County and State

8. Statement of Significance

Applicable National Register Criteria

(Mark "x" in one or more boxes for the criteria qualifying the property for National Register listing.)

- A Property is associated with events that have made a significant contribution to the broad patterns of our history.
B Property is associated with the lives of persons significant in our past.
C Property embodies the distinctive characteristics of a type, period, or method of construction or represents the work of a master, or possesses high artistic values, or represents a significant and distinguishable entity whose components lack individual distinction.
D Property has yielded, or is likely to yield, information important in prehistory or history.

Criteria Considerations

(Mark "x" in all the boxes that apply.)

Property is:

- A owned by a religious institution or used for religious purposes.
B removed from its original location.
C a birthplace or grave.
D a cemetery.
E a reconstructed building, object, or structure.
F a commemorative property.
G less than 50 years of age or achieved significance within the past 50 years.

Areas of Significance

(Enter categories from instructions)

Exploration/Settlement

Period of Significance

1867-1910

Significant Dates

1867

1868

1898

Significant Person

(Complete if Criterion B is marked above)

N/A

Cultural Affiliation

N/A

Architect/Builder

N/A

Narrative Statement of Significance

(Explain the significance of the property on one or more continuation sheets.)

9. Major Bibliographical References

Bibliography

(Cite the books, articles, and other sources used in preparing this form on one or more continuation sheets.)

Previous documentation on file (NPS):

- preliminary determination of individual listing (36 CFR 67) has been requested
previously listed in the National Register
previously determined eligible by the National Register
designated a National Historic Landmark
recorded by Historic American Buildings Survey
recorded by Historic American Engineering Record

Primary location of additional data:

- State Historic Preservation Office
Other State agency
Federal agency
Local government
University
Other

Name of repository:

Ashland City Hall

United States Department of the Interior
National Park Service

NATIONAL REGISTER OF HISTORIC PLACES CONTINUATION SHEET

Section 8 Page 1

Hargadine Cemetery
name of property
Jackson, Oregon
county and State

Statement of Significance

The Hargadine Cemetery, established in 1868, is locally significant as the burial ground of early Euro-American settlers of Ashland, Oregon and its immediate environs. Submitted as part of a multiple property document, *Historic Cemeteries of Ashland, Oregon and Environs, 1851-1925*, Hargadine Cemetery meets the registration requirements set forth in the registration document. It was established and developed during the historic period, 1851 to 1925, has retained its integrity of setting, location, design and materials, and evokes its historic associations. The cemetery also embodies the distinctive characteristics of a community burial ground through its array of monumentation.

The cemetery is eligible for the National Register of Historic Places under Criteria Consideration D, Criterion A for its associations with individuals importantly involved in the area's early period of settlement between 1851 and 1884. It is additionally significant under Criterion C for its intact landscape and well-preserved array of monuments by local master carvers. The cemetery's period of significance comprises the years 1867 to 1910, when many first generation settlers were interred. By about 1910 the cemetery was substantially full and an increasing number of burials were conducted in the newer Mountain View Cemetery near the town's eastern boundary.

At 1.47 acres, Hargadine Cemetery is the smallest of three cemeteries within Ashland city limits, and the only one to be held in private ownership for most of its existence. Beginning as a small family graveyard on a former donation land claim, the cemetery's management was taken over by the newly formed Hargadine Cemetery Association in 1898. This organization ceased to function in 1968 and responsibility for the cemetery remained in question until 1989, when the City of Ashland acquired title by act of the Oregon Legislature.

United States Department of the Interior
National Park Service

NATIONAL REGISTER OF HISTORIC PLACES CONTINUATION SHEET

Section 8 Page 2

Hargadine Cemetery
name of property
Jackson, Oregon
county and State

Early Settlement of Ashland and Environs

Settlement along upper Bear Creek began late in 1851 when donation land claimants took up land in the small valley north of the Siskiyou mountain range. Abel Helman, Robert Hargadine and Eber Emery settled on Mill Creek where Helman and Emery built a sawmill and Robert Hargadine opened a mercantile establishment. When a post office opened in 1855, the small community was officially named Ashland Mills. The commercial district gradually expanded and residential neighborhoods developed nearby. In 1867 investors opened a large woolen mill near the center of town. Ashland was incorporated on October 13, 1874.

By 1880 Ashland's population numbered 842 residents.¹ The Oregon and California Railroad line arrived in town on April 16, 1884. Eighty-nine new houses and thirty-three other buildings were constructed that year.² Developers platted ten new additions to Ashland in 1888 and thirty-four new houses were built during 1889. By 1890 the city's population jumped to 1784, doubling in ten years.³

Development occurred rapidly after 1900, encouraged by the success of orchards in the area. Acres of peaches, pears and apples blossomed on Ashland's hillsides. Rail transportation assisted the fruit industry, woolen mill, and local creamery and woodworking plants. Ashland's population, which stood at 2634 in 1900, would reach 5010 by 1910.⁴

Hargadine Cemetery

On December 8, 1867 Robert and Martha Hargadine buried their one-year-old daughter, Katie, on a sloping hill north of Ashland. Two weeks later, on December 21, 1867, Allen F. and Sarah Farnham interred their young son, Cuyler, in a grave nearby. These are the first two recorded burials in Hargadine Cemetery.

United States Department of the Interior
National Park Service

NATIONAL REGISTER OF HISTORIC PLACES CONTINUATION SHEET

Section 8 Page 3

Hargadine Cemetery
name of property
Jackson, Oregon
county and State

The Hargadine's reasons for selecting this spot to bury their daughter are unknown. There may well have been other burials on this wooded hill in the fifteen years since initial settlement. Families buried their dead on the gentle rises and knolls of individual farms and Ashland had no other formal burying ground. James Haworth, owner of the former William Chase Donation Land Claim, granted these grieving families burial space on his land.⁵

Six months later, on July 7, 1868, James Haworth formally deeded about one and one-half acres of land to Allen F. Farnham and Robert Hargadine in trust, for use as a cemetery. The deed read in part:

To Allen F. Farnham and R.B. Hargadine 1.40 acres; also the right of way for a road to and from the described tract of land to the main road. This conveyance is made for the purpose of a Cemetery or Grave Yard for the burial of the dead and for no other purpose. The said parties of the second part may lay off and convey the said land in burial lots of such size and dimensions as to them may seem proper; conditional, that if the said land or any part thereof shall be diverted to any other use or purpose than for Cemetery for the burial of the dead, the same shall revert to the said parties of the first part⁶

In 1870 Haworth sold his entire holdings, including the graveyard land still in trust, to W.C. Myer, a long-time area rancher.⁷ In the following decade the cemetery saw

United States Department of the Interior
National Park Service

NATIONAL REGISTER OF HISTORIC PLACES CONTINUATION SHEET

Section 8 Page 4

Hargadine Cemetery
name of property
Jackson, Oregon
county and State

occasional use. Hargadine Cemetery sexton's records list the early burials in a physical pattern described as irregular.⁸ Ida Rose Drake, aged eight years, was buried on September 19, 1868. George L. Lane was buried August 28, 1870 and his wife, Ann, was interred a few months later. Six more recorded burials occurred before mid-1876.⁹

On August 16, 1876 Allen F. Farnham died suddenly and was buried in the cemetery he helped found. Early in January 1877, Robert Hargadine died after a lengthy illness and was buried near his daughter and young son. The local newspaper noted:

The remains were followed to the family cemetery and deposited to a spot selected by himself as his last resting place.¹⁰

Interments during the 1880s included those of prominent, early settler Asa Fordyce who died March 20, 1884. Ashmun J. Butler, who died January 20, 1859, was first interred on the family farm and reburied in Hargadine Cemetery in 1884. The Tidings noted:

Sargent Dunlap [sexton] of Jacksonville was in town on business connected with removal of the remains of Mr. Butler from the farm near Ashland.¹¹

W.C. Myer's wife, Elizabeth, died on November 6, 1887 and was buried in Hargadine Cemetery overlooking her family farm.

In December 1887, the railroad tracks from the north and south joined at Ashland, triggering a dramatic population increase. On August 28, 1888, W.C. Myer platted the W.C.

United States Department of the Interior
National Park Service

NATIONAL REGISTER OF HISTORIC PLACES CONTINUATION SHEET

Section 8 Page 5

Hargadine Cemetery
name of property
Jackson, Oregon
county and State

Myer Addition to Ashland, one of several additions recorded that year.¹² The cemetery, consisting of Lot 10 of the addition, now lay within the Ashland city limits.

Many more interments occurred during the 1890s. The Wicks, Robisons and Casebeers, families who settled in Myer's new addition, chose nearby Hargadine Cemetery as the burial place for their loved ones. Crowding in the city-owned Ashland Cemetery led to additional burials in Hargadine Cemetery. As Ashland's population increased so did the need for burial space. By 1889 the problem reached critical proportions. The Ashland Tidings noted:

Ashland, like most other growing cities, finds that its cemeteries were located too close to town. The [Ashland] cemetery will soon have to be abandoned anyhow and it is high time that arrangements were made for grounds to take their place.¹³

No arrangements were made, however, and Hargadine Cemetery continued to fill. In late 1891 a reporter from the Ashland Tidings visited the graveyard and noticed some improvements:

It was the enclosure of the Fordyce lot by a neat stone coping. The work was done by J.H. Russell, and the coping consisted of four blue sandstone slabs from the Tolman Quarry the four pieces with the corner posts, enclosing a lot about 9 x 10 feet in size. The monument which Mr. Russell set up on the lot recently, is a handsome shaft of Vermont blue marble surmounted by an urn of

United States Department of the Interior
National Park Service

NATIONAL REGISTER OF HISTORIC PLACES CONTINUATION SHEET

Section 8 Page 6

Hargadine Cemetery
name of property
Jackson, Oregon
county and State

the same. Other work put up by Mr. Russell near the Fordyce plot includes handsome monuments to Sarah J. Farnham, Josiah Casebeer, and Baptiste Chegar.¹⁴

In June 1897 a group of individuals met at Ashland City Hall to discuss forming a cemetery association. Attendees included Mrs. Robert Hargadine, G.F. Billings, Mrs. J.R. Casey, and D.H. Jackson. On October 20, 1897 the group formed a temporary organization with G.F. Billings as chairman and Eugene Walrad as clerk. Three people were appointed as directors. The group decided that all owners of one or more lots prior to May 1, 1898 would be eligible as charter members of the organization.¹⁵

On February 21, 1898 Hargadine Cemetery Association filed articles of incorporation with the secretary of state. The number of directors increased to five. The organization counted seventeen charter members including members of the Farnham, Hargadine and Myer families. Eugene Walrad was appointed as sexton. On March 21, 1898 W.C. Myer transferred title to the burial ground to the Hargadine Cemetery Association.¹⁶

The new association met monthly at the city hall. The directors reviewed lot sales, worked on a plat, and struggled to obtain water for the site. Regular projects included landscaping as well as road, walkway and gate construction. Annual cemetery cleaning became a regular tradition. On May 8, 1899 the Association announced:

All persons interested in Hargadine Cemetery meet at said cemetery provided with shovels, rakes and wheelbarrows to clean up the grounds for decoration day, when the ladies will be there with a good dinner for all workers.¹⁷

United States Department of the Interior
National Park Service

NATIONAL REGISTER OF HISTORIC PLACES CONTINUATION SHEET

Section 8 Page 7

Hargadine Cemetery
name of property
Jackson, Oregon
county and State

In 1909 the Hargadine Cemetery Association granted the City the right to lay two iron pipes for water. In 1910 the directors approved Sexton Walrad's request to build a toolhouse, (ten by twelve feet with two sash windows), and a new post-and-wire fence along the eastern and northern boundaries. In 1915, the cemetery's eastern entrance was enlarged to allow passage of automobiles.¹⁸ Sexton Walrad also asked the Ashland City Council for one dollar per lot for each he sold in the Hargadine Cemetery, saying that:

He is paid for digging graves but the hardpan and granite made it necessary for him to hire an assistant and in some cases to use powder for blasting the graves out, which took any profit which he might make from this source.¹⁹

As older members of pioneer families died or moved away from Ashland, care of plots in the cemeteries declined. In 1914 the Ashland City Council formed a committee to oversee local cemeteries. The plan, the council hoped would establish uniform care.²⁰ By the 1920s Ashland cemeteries were in poor condition. In January 1927, Ashland's mayor stated:

Although with the small funds available we have cleaned up the cemeteries under the city's control, nevertheless, they are yet in a deplorable condition. I would recommend to the new administration the providing of some plan to permanently provide for the upkeep of the city's cemeteries even if it is necessary to float a small bond issue in order to provide a fund.²¹

United States Department of the Interior
National Park Service

NATIONAL REGISTER OF HISTORIC PLACES CONTINUATION SHEET

Section 8 Page 8

Hargadine Cemetery
name of property
Jackson, Oregon
county and State

Almost two years later the problem still remained. With Mayor Edward Thornton's guidance, the city council proposed a charter amendment to help maintain Ashland's cemeteries. The Ashland Tidings commented:

It is a known fact that the cemeteries of Ashland are a disgrace to the community, they having always been in a run down and unattractive condition. The two cemeteries within the city [Hargadine and Ashland Cemeteries] are in a particular sad state of Maintenance. It is true that the Hargadine Cemetery is a private cemetery but the proposed measures enable the city to take over its care if suitable arrangements can be made. Space in the Hargadine Cemetery is entirely taken up.

The proposed amendment would permit the City to levy an annual tax of one mill (\$2961) for the upkeep of our cemeteries, \$500 annually of which, must be set aside in a permanent trust fund, the income only of which will be used to maintain the cemeteries under the city's control...²²

The charter amendment also stipulated that the City would provide perpetual care for any new grave spaces sold and that people already holding title to land could, by payment to the perpetual care fund, purchase care for their lots. The election was held on November 6, 1928. Ashland citizens voted 972 to 470 in favor of the tax.²³ After studying the issue the Hargadine Cemetery Association passed a motion that stated:

United States Department of the Interior
National Park Service

NATIONAL REGISTER OF HISTORIC PLACES CONTINUATION SHEET

Section 8 Page 9

Hargadine Cemetery
name of property
Jackson, Oregon
county and State

The officers of this association [shall] be constituted a committee to call a meeting of the members at the earliest practical date to authorize the Board of Trustees to negotiate with the City Council relative to turning control of said cemetery over to said city, and if satisfactory arrangements can be made with the Council, that said Board be authorized to transfer the property of the association to the city.²⁴

While Hargadine Cemetery Association approved transferring the burial ground to the City, by 1930 municipal funds had shrunk dramatically with the onset of the Depression. In April, the city council announced that it would not take responsibility for Hargadine Cemetery due to the city's financial situation.²⁵ Some families contributed to the perpetual care fund and the City of Ashland eventually assumed responsibility for care of sixteen graves.

Despite its financial woes, the City used available monies in the cemetery fund for upkeep. In April 1931, the Ashland Tidings noted the improvements, including the cleaning of Hargadine Cemetery, "where many of the old pioneers are buried."²⁶ Ashland cemeteries, the newspaper observed, "will be in much better condition on this Memorial Day than ever before in the history of the cemeteries."²⁷

Conditions in Hargadine Cemetery worsened during the late Depression and the World War II years. Membership in the association declined and years passed between official meetings of the organization. In May 1945, Eric Weren, president of the Hargadine Cemetery Association, asked the city council for additional maintenance funds, for roadway improvement, and for permission to solicit the sale of

United States Department of the Interior
National Park Service

NATIONAL REGISTER OF HISTORIC PLACES CONTINUATION SHEET

Section 8 Page 10

Hargadine Cemetery
name of property
Jackson, Oregon
county and State

additional perpetual upkeep agreements for Hargadine Cemetery. The council approved his requests.²⁸

In 1961, Voda Brower, longtime secretary-treasurer of the Hargadine Cemetery Association, offered to turn over the association's small bank account to the City of Ashland with the understanding that the City take over and maintain the cemetery in conjunction with other Ashland cemeteries. No official action resulted.²⁹ In January 1968, the association's funds were finally deposited in the city's cemetery trust fund, marked for use in Hargadine Cemetery.³⁰

In 1988 concern over Hargadine Cemetery's condition resulted in a study regarding the City's responsibility for the property. No official transfer of deed was found. The City investigated ways to acquire ownership without buying the title from the non-existent Hargadine Cemetery Association. In March 1989, Representative Nancy Peterson and State Senator Lenn Hannon introduced House Bill 3017 to allow the City of Ashland to acquire Hargadine Cemetery. The bill passed successfully and the cemetery shifted from private to municipal ownership.³¹

City officials, housewives and farmers are among those who rest in Hargadine Cemetery. Names of several prominent early Ashland area residents, most of whom died by about 1910, are listed in the cemetery burial register. These include Asa Fordyce, settler of 1853, who died March 22, 1884; Amos Willits, town trustee, who died November 23, 1899, and John P. Walker, settler of 1853 and stock rancher, who died February 16, 1911. Three individuals who helped shape Ashland's early development are also buried here. These include:

United States Department of the Interior
National Park Service

NATIONAL REGISTER OF HISTORIC PLACES CONTINUATION SHEET

Section 8 Page 11

Hargadine Cemetery
name of property
Jackson, Oregon
county and State

Robert Hargadine

Born January 31, 1828 in Delaware, Robert Hargadine settled a donation land claim in early 1852 on which part of the present city is located. He was Ashland's first merchant, helped establish the Ashland Woolen Mills and was active in school and town political affairs. After selling his land claim to Lindsay Applegate in 1862, Hargadine further expanded his mercantile business. Following his death in January 1877, his widow, Martha Kilgore Hargadine continued the family business and was active in preserving Hargadine Cemetery.

Allen F. Farnham

Allen F. Farham was born December 7, 1822 in Woolwich, Maine. In the mid-1850s he loaned money to the builders of the Eagle Flour Mill near Ashland in 1854. Farnham received stock for his investment and in 1864 assumed full ownership. A.F. Farnham operated the Eagle Flour Mill until his death on August 16, 1876. His wife, Sarah Billings Farnham is also buried in Hargadine Cemetery.³²

W.C. Myer

W.C. Myer was born April 22, 1818 in Ohio and settled a donation land claim north of Ashland in 1853. In 1870 he purchased the former William Chase Donation Land Claim on which Hargadine Cemetery is located. Myer was widely known as a progressive farmer and as breeder of Percheron and Arabian horses. Myer's wife, Elizabeth Nessley Myer died in November 1887 and W.C. Myer on May 21, 1903. Both are buried in Hargadine Cemetery.³³

United States Department of the Interior
National Park Service

NATIONAL REGISTER OF HISTORIC PLACES CONTINUATION SHEET

Section 8 Page 12

Hargadine Cemetery
name of property
Jackson, Oregon
county and State

Monument Makers and Undertakers

Hargadine Cemetery monumentation exhibits both expert craftsmanship and fine materials. Noted marble carvers James Russell and Ann Hill Russell, created several of the cemetery's monuments. James Carr Whipp, prominent longtime Jacksonville carver, also produced grave markers for Hargadine cemetery.

James Russell was born in Tennessee on April 5, 1823 where he received his earliest instruction in the stonecutter trade. After an apprenticeship in Pittsburgh, Pennsylvania, Russell left the east for California and the gold rush. He moved to southern Oregon in 1851 and married Ann Hill on May 9, 1854. The couple built a marble mill on Ashland Creek in 1865 where James Russell created the first marble monuments in Jackson, Josephine, Douglas, Klamath and Lake Counties. James Russell was assisted in the marble and monument business by his wife who excelled in both design and carving. Russell died in Ashland on October 1, 1895.³⁴ During her husband's illness and following his death, Ann Hill Russell operated the marble monument business alone, earning a reputation as a fine marble carver.

Monuments credited to James or Ann Hill Russell in Hargadine Cemetery include those of the Fordyce, Farnham, Casebeer and Chegar families. For these stones and many others, the Russells took granite and marble from several area quarries including Marble Mountain in Josephine County, and the Tolman, Praytor and Blair quarries near Ashland.

James Carr Whipp, proprietor of the Jacksonville Marble Works, has several representative headstones in Hargadine Cemetery. A respected and accomplished carver, Whipp's markers are found in several locations throughout the

United States Department of the Interior
National Park Service

NATIONAL REGISTER OF HISTORIC PLACES CONTINUATION SHEET

Section 8 Page 13

Hargadine Cemetery
name of property
Jackson, Oregon
county and State

region and the state. Whipp, who moved to southern Oregon in 1883 from Portland to work on the Jackson County Courthouse in Jacksonville, opened a shop in Ashland soon after 1900, but stayed only a short time.³⁵ Examples of Whipp's work in Hargadine Cemetery include a monument for George Fordyce (d. 1887); a headstone of Vermont marble for T.W. Bryant (died 1898); and a granite monument for Thomas Reeves Brown (d. January 11, 1900).

Hargadine Cemetery also provided an outlet for the work of local undertakers. Between 1851 and about 1880, local cabinetmakers such as A.V. Gillette, John Sheldon, and Henry Emery constructed coffins. More formal undertaking businesses developed after 1884 when the railroad reached Ashland. John P. Dodge opened a furniture business in Ashland where he built coffins and executed undertaking duties until his death in 1928.³⁶ H.C. Stock opened an undertaking parlor and cabinet shop on Main Street in 1897. He remained at trade in Ashland until his death September 22, 1933.³⁷

Other Ashland Area Cemeteries

Hargadine Cemetery is the only one of three cemeteries within the Ashland City limits to remain in private hands through most of its existence. A review of the four other cemeteries in the study area, Hill-Dunn Cemetery, Mt. Vernon Cemetery, Ashland Cemetery, and Mountain View Cemetery, reveals important similarities, as well as separate and distinct characteristics.

Hill-Dunn Cemetery, situated approximately three miles east of Ashland, was begun in 1853 to provide a burial ground during Indian-settler conflicts. The three-acre cemetery was established on the Isaac Hill Donation land Claim, and is one of the two oldest burial grounds in the study area. Rural in character, Hill-Dunn Cemetery retains vegetation

United States Department of the Interior
National Park Service

NATIONAL REGISTER OF HISTORIC PLACES CONTINUATION SHEET

Section 8 Page 14

Hargadine Cemetery
name of property
Jackson, Oregon
county and State

typical of the valley's bordering uplands at the time of initial immigration. The cemetery contains both modest headstones and elaborately embellished monuments.

Mount Vernon cemetery, located on a knoll approximately three miles north of Ashland, was established on the William Cortez Myer Donation Land Claim as a family graveyard. Now approximately one-quarter acre in size, the cemetery's rural landscape is comprised of oaks, grasses and brush. While Mount Vernon Cemetery contains several interments, many now lack markers, the headstones have been damaged or destroyed by grazing stock.

The town trustees of Ashland platted Ashland Cemetery as a public burying ground in 1880. Centrally located in the city, the 4.64-acre cemetery is situated on gently sloping land and is bordered on two sides by paved roads. Ashland Cemetery contains an intact stand of native black and white oaks. Largely filled by 1890, Ashland cemetery is the final resting-place of many first generation settlers of Ashland and the environs.

The City of Ashland developed Mountain View Cemetery in 1904. Located in southeast Ashland, the seventeen-acre cemetery lies on level land and is bordered on two sides by paved roads. Containing two mausoleums, one constructed in 1925 and one in 1949, Mountain View Cemetery is landscaped with a wide variety of mature trees. The graveyard contains headstones and monuments in a range of sizes and styles. Mountain View Cemetery holds remains of many individuals significant in the development of Ashland and its environs.

Summary

Hargadine Cemetery meets the registration requirements outlined for Historic Cemeteries of Ashland, Oregon and Environs. The cemetery was established and substantially developed during the historic period, 1851 to 1925. The

United States Department of the Interior
National Park Service

NATIONAL REGISTER OF HISTORIC PLACES CONTINUATION SHEET

Section 8 Page 15

Hargadine Cemetery
name of property
Jackson, Oregon
county and State

cemetery has retained its integrity of setting, location, design, materials, and craftsmanship to evoke its associations with the historic period. Hargadine Cemetery embodies the distinctive characteristics of its type as a community burial ground through its array, scope and quality of monumentation. Hargadine Cemetery is clearly associated with the period of earliest settlement in the Ashland area.

Hargadine Cemetery's period of significance, 1867 to 1910, spans the forty-year period between the first known burial in the cemetery and 1910. In those years the graveyard received the remains of many of the area's earliest settlers and became the distinctive burial ground now associated with Ashland, Oregon's early development.

United States Department of the Interior
National Park Service

NATIONAL REGISTER OF HISTORIC PLACES CONTINUATION SHEET

Section 8 Page 16

Hargadine Cemetery
name of property
Jackson, Oregon
county and State

Endnotes

- ¹ "Population of Oregon Cities and Counties and Metropolitan Areas, 1850-1957." Oregon State University: Bureau of Municipal Research and Service, Information Bulletin No. 106, p.4.
- ² Kay Atwood, "Ashland Cultural Resources Inventory," (Railroad Addition), City of Ashland, 1988.
- ³ "Population of Oregon Cities and Counties and Metropolitan Areas, 1850-1957."
- ⁴ U.S. Bureau of Census, Census of Population, 1900; 1910.
- ⁵ Jackson County Deeds, Volume 6, Page 572; Volume 2, Page 173; Volume 4, Page 53. William Chase settled the donation land claim. Robert Wright purchased the property in 1858 and sold it six years later to James Haworth.
- ⁶ Jackson County Deeds, Volume 4, Page 700.
- ⁷ Ibid., Volume 5, Page 205.
- ⁸ Hargadine Cemetery Records.
- ⁹ Ibid.
- ¹⁰ Ashland Tidings, January 17, 1877, 3:2; January 27, 1877, 3:3.
- ¹¹ Ibid., July 7, 1884, 3:3; October 10, 1884, 3:4;
- ¹² Jackson County Deeds, Volume 16, Page 454.
- ¹³ Ashland Tidings, November 1, 1889, 3:1.
- ¹⁴ Ibid., November 20, 1891, 3:1.
- ¹⁵ Ibid., May 7, 1897, 3:1; Hargadine Cemetery Association Records.
- ¹⁶ Ashland Tidings, June 7, 1897, 3:1; June 14, 1897 3:2; February 21, 1898, 3:2; Jackson County Deeds, Volume 33, Page 550; Hargadine Cemetery Association Records.
- ¹⁷ Hargadine Cemetery Association Records, June 8, 1899.

United States Department of the Interior
National Park Service

NATIONAL REGISTER OF HISTORIC PLACES CONTINUATION SHEET

Section 8 Page 17

Hargadine Cemetery
name of property
Jackson, Oregon
county and State

- ¹⁸ Ibid., January 4, 1909; January 25, 1910; April 12, 1915. The tool house is no longer standing.
- ¹⁹ Minutes, Ashland City Council, February 10, 1916.
- ²⁰ Ashland Tidings, April 9, 1914.
- ²¹ Ibid., January 3, 1927.
- ²² Ibid., October 3, 1928.
- ²³ Minutes, Ashland City Council; Ashland Tidings, April 21, 1930.
- ²⁴ Hargadine Cemetery Association Records.
- ²⁵ Minutes, Ashland City Council, April 1, 1930.
- ²⁶ Ashland Tidings, April 9, 1931.
- ²⁷ Ibid.
- ²⁸ Minutes, Ashland City Council, May 22, 1945.
- ²⁹ Hargadine Cemetery Association Records.
- ³⁰ Ibid.
- ³¹ Medford Mail Tribune, March 30, 1989. Ashland resident Edmund Dews initially directed the City's attention to conditions at Hargadine Cemetery.
- ³² An illustration of one of the mill structures appears in A.G. Walling's History of Southern Oregon Comprising Jackson, Josephine, Douglas, Curry and Coos Counties, 1884..
- ³³ An illustration of the this ranch is included in A.G. Walling's History of Southern Oregon Comprising Jackson, Josephine, Douglas, Curry and Coos Counties, 1884.
- ³⁴ Ashland Tidings, October 30, 1895; Joseph Gaston, The Centennial History of Oregon, 1811-1912 (Chicago: S.J. Clarke Publishing Co., 1912), Volume IV, Page 1088.

United States Department of the Interior
National Park Service

NATIONAL REGISTER OF HISTORIC PLACES CONTINUATION SHEET

Section 8 Page 18

Hargadine Cemetery
name of property
Jackson, Oregon
county and State

³⁵ James Whipp, "A brief Account of the Life of James Carr Whipp." Southern Oregon Historical Society Collection.

³⁶ Atwood, Inventory Form 265.

³⁷ Ibid. Inventory Form 285.

United States Department of the Interior
National Park Service

NATIONAL REGISTER OF HISTORIC PLACES CONTINUATION SHEET

Section 9 Page 1

Hargadine Cemetery
name of property
Jackson, Oregon
county and State

Bibliography

- Atwood, Kay; Clay, L. Scott. Ashland Oregon, Cultural Resources Survey, 1988-1990.
- Atwood, Kay. Mill Creek Journal: Ashland, Oregon, 1850-1960. Ashland, Oregon: Kay Atwood, 1987.
- Backes, G. Byron. The Ashland Area and Its Environs. Thesis, University of Oregon, M.S. Degree, June, 1959.
- Hargadine Cemetery Association Records, City of Ashland Archives.
- Gaston, Joseph. The Centennial History of Oregon, 1811-1912 Chicago: S.J. Clarke Publishing Co., 1912.
- Minutes, Ashland City Council, City of Ashland Archives.
- O'Harra, Marjorie. Ashland: The First 130 Years, Jacksonville, Oregon: Southern Oregon Historical Society, 1981.
- Todt, Donn. Lithia Park Horticulturist, Interview and Field Visit, October 31, 1997.
- Walling, A.G. History of Southern Oregon Comprising Jackson, Josephine, Douglas, Curry and Coos Counties Portland: A.G. Walling, 1884.
- Whipp, James C. A Brief Account of the Life of James Carr Whipp. Southern Oregon Historical Society Collection.

Hargadine Cemetery

Jackson Oregon

Name of Property

County and State

10. Geographical Data

Acreage of Property 1.47 acres

Ashland, Oregon 1:24000

UTM References

(Place additional UTM references on a continuation sheet.)

1 10 522600 4672890
Zone Easting Northing

3 Zone Easting Northing
4 Zone Easting Northing

See continuation sheet

Verbal Boundary Description

(Describe the boundaries of the property on a continuation sheet.)

Boundary Justification

(Explain why the boundaries were selected on a continuation sheet.)

11. Form Prepared By

name/title Katherine C. Atwood
organization date November 16, 1997
street & number 365 Holly Street telephone (541) 482-8714
city or town Ashland state OR zip code 97520

Additional Documentation

Submit the following items with the completed form:

Continuation Sheets

Maps

- A USGS map (7.5 or 15 minute series) indicating the property's location.
A Sketch map for historic districts and properties having large acreage or numerous resources.

Photographs

Representative black and white photographs of the property.

Additional items

(Check with the SHPO or FPO for any additional items)

Property Owner

(Complete this item at the request of SHPO or FPO.)

name City of Ashland
street & number 20 East Main Street telephone (541) 488-5305
city or town Ashland, state OR zip code 97520

Paperwork Reduction Act Statement: This information is being collected for applications to the National Register of Historic Places to nominate properties for listing or determine eligibility for listing, to list properties, and to amend existing listings. Response to this request is required to obtain a benefit in accordance with the National Historic Preservation Act, as amended (16 U.S.C. 470 et seq.).

Estimated Burden Statement: Public reporting burden for this form is estimated to average 18.1 hours per response including time for reviewing instructions, gathering and maintaining data, and completing and reviewing the form. Direct comments regarding this burden estimate or any aspect of this form to the Chief, Administrative Services Division, National Park Service, P.O. Box 37127, Washington, DC 20013-7127; and the Office of Management and Budget, Paperwork Reductions Projects (1024-0018), Washington, DC 20503.

United States Department of the Interior
National Park Service

NATIONAL REGISTER OF HISTORIC PLACES CONTINUATION SHEET

Section 10 Page 1

Hargadine Cemetery
name of property
Jackson, Oregon
county and State

Verbal Boundary Description

The nominated property is located in Section 5BD, Township Township 39 South, Range 1 East of the Willamette Meridian, in Jackson County, Oregon, and is legally described as Lot 10 of the W.C. Myer Addition to Ashland, Oregon. It is otherwise identified as Tax Lot 600 at said location.

Boundary Justification

The nominated area encompasses the entire lot (1.47 acres) included within Hargadine Cemetery from 1868 onward.

United States Department of the Interior
National Park Service

NATIONAL REGISTER OF HISTORIC PLACES CONTINUATION SHEET

Section Photographs Page 1

Hargadine Cemetery
name of property
Jackson, Oregon
county and State

Photograph No. 1

- 1) Hargadine Cemetery
- 2) Ashland, Jackson County, Oregon
- 3) Photographer: Katherine Atwood
- 4) Date of Photograph: November 1997
- 5) Negative holder: Katherine Atwood
365 Holly Street
Ashland, Oregon 97520
6. View from the cemetery easterly boundary toward the
westerly boundary
7. Photograph Number 1 of 10

Note: The information for items one through five is
identical for each of the remaining photographs.

Photograph No. 2

6. View from the cemetery southerly boundary toward the
northerly boundary
7. Photograph Number 2 of 10

Photograph No. 3

6. View from the cemetery northerly boundary toward the
southerly boundary
7. Photograph Number 2 of 10

Photograph No. 4

6. View from the cemetery westerly boundary toward the
easterly boundary
7. Photograph Number 4 of 10

United States Department of the Interior
National Park Service

NATIONAL REGISTER OF HISTORIC PLACES CONTINUATION SHEET

Section Photographs Page 2

Hargadine Cemetery
name of property
Jackson, Oregon
county and State

Photograph No. 5

- 6. Katie Hargadine monument, westerly elevation.
- 7. Photograph Number 5 of 10

Photograph No. 6

- 6. W.C. Myer monument, westerly elevation.
- 7. Photograph Number 6 of 10

Photograph No. 7

- 6. Robert B. Hargadine Monument, westerly elevation
- 7. Photograph Number 7 of 10

Photograph No. 8

- 6. A.F. Farnham monument, southerly elevation
- 7. Photograph Number 8 of 10

Photograph No. 9

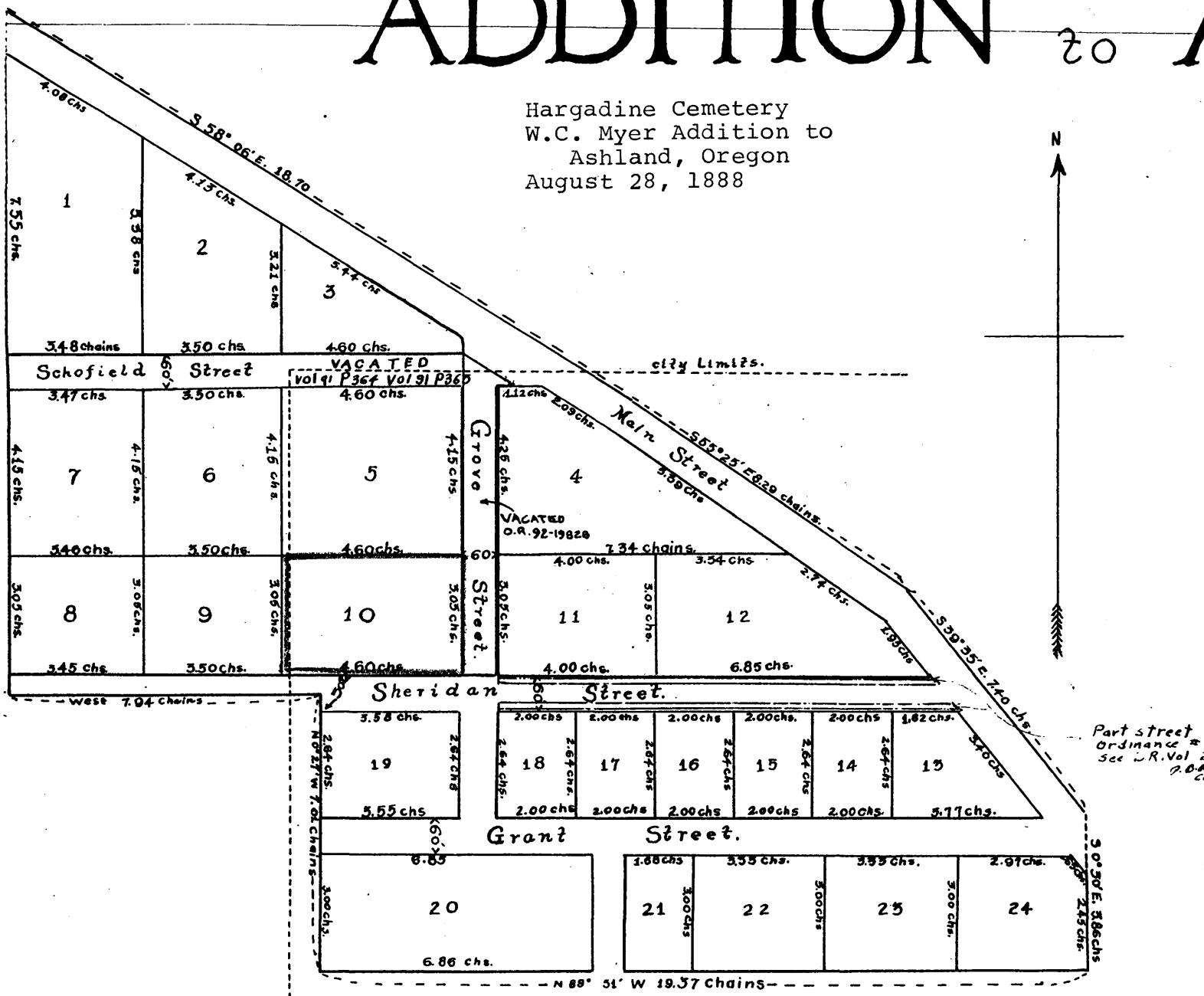
- 6. Butler and Thompson monuments, southerly elevation
- 7. Photograph Number 9 of 10

Photograph No. 10

- 6. Fordyce monument, easterly elevation
- 7. Photograph Number 10 of 10

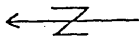
ADDITION 20 1

Hargadine Cemetery
W.C. Myer Addition to
Ashland, Oregon
August 28, 1888



The W.C. Myer Addition to Ashland Oregon is part of Donation Land Claim No 38, all part of lot No 5 in Section 5 in Township 39 South of Range 1 East Willamette Meridian Oregon, and is bounded and described as follows to wit, Commencing at the Southwest corner Donation Land Claim No 38 in Township 39, South Range 1 East, Thence North $0^{\circ} 02'$ East along West boundary line 01 38, 17.17 chains, Thence South $58^{\circ} 06' E$ 18.70 chains, Thence $S 55^{\circ} 25' E$ 8.29 chains, Thence $S 39^{\circ} 35' E$ 7.40 chains, Thence $S 0^{\circ} 30' E$ 3.86 chains, Thence $N 89^{\circ} 51' W$ 19.37 chains Thence $N 0^{\circ} 27' W$ 7.01 chains to the South boundary line claim 38. Thence West along said South boundary 7 chains to place of beginning, containing 36.16 Acres.

HARGADINE CEMETERY
ASHLAND, OREGON



	DROP OFF						194	195	196	TREE		198	
							165	164	163		162	161	161 1/2
	16	17	48	49	(80)	81					112	113	113 1/2
	15	18	(47)	50	79	82					111	114	114 1/2
	14	19	46	51	78	83					110	115	115 1/2
	13	20	45	52	77	84					109	116	116 1/2
	12	21	44	53	76	85					108	117	117 1/2
184	11	22	43	54	75	86				(107)	118	118 1/2	
183	10	23	42	55	74	87				106	119	119 1/2	
182	9	24	41	56	73	88				105	120	120 1/2	
181	8	25	40	57	72	89				104	121	121 1/2	
180	7	26	39	58	71	90				103	122	122 1/2	
179	6	27	38	59	70	91				102	123	(123 1/2)	
178	5	28	37	60	69	92				101	124	124 1/2	
177	4	29	36	61	68	93				100	125	125 1/2	
176	3	30	35	62	67	94				99	126	126 1/2	
175	2	31	(34)	63	66	95				98	127	127 1/2	
174	1	32	33	64	65	96				97	128	128 1/2	
173	152	147	146	141	(140)	135				134	129	129 1/2	
172	151	148	145	142	(139)	136				133	130	130 1/2	
171	150	149	144	143	138	137				132	131	131 1/2	
170	153	154	155	156	157	158				159	160		

Hargadine Cemetery
Plat
March 8, 1898

Hargadine Cemetery
Sexton's Plot Map

190	191	192	193	194	195	196
168	167	166	165	164	163	162
			Denton, W.	Denton	Olsey	Penniston, S.
16	17	48	49	50	51	52
Hadfield, T.E.	Ross, W.W.	Walker, F.H.	Walker, F.H.	Mayfield, W.R.	Lighty	
15	18	47	50	51	52	53
Arts H. High	Evans, A.B.	Baer, Daniel	Sonnichsen	Yerex	Ruble, Erans	
14	19	46	51	52	53	54
Howard	Sonnichsen	Casey, Geo.	Britson	Wimer	Wimer, G.W.	
13	20	45	52	53	54	55
Taylor, H.	Rogers, L.W.	Genereus, Cress, D.	Parson, Dr.	Boyd, Thom.	Martin, J.H.	
12	21	44	53	54	55	56
Hendrick, J.	Wilson, P.	Commons, L.M.	Dollerhide.	Beebe, Dr.	Shively, J.B.	
11	22	43	54	55	56	57
Garrett, R.M.	Abbott, A.	Porter, Caroline	Carter, Syd	Walrad, E.	Kilgore, J.	
10	23	42	55	56	57	58
Wait, J.B.	Webster, Z.	Mills, W.S.	Durfee	Lane, Geo.	Briner, L.	
9	24	41	56	57	58	59
Patten	Taylor, C.	Casebeer, J.	Various Infants	Walrad, D.P.	Bauer, P.	
8	25	40	57	58	59	60
Mayhew, Tom.	Boynton, W.C.	Palmer	Palmer	Shultz	Shultz, inf.	
7	26	39	58	59	60	61
Drake, L.A.	Lowe Drake	Bolton, T.K.	Walker, M.H.	Erastus	Fletcher	
6	27	38	59	60	61	62
Commons, John	High, Britton M.L.	Fordyce, Geo.	Walker, J.N.	Monroe, Jovette, Buckman	Jacquette, K. Stoy, S.	
5	28	37	60	61	62	63
Hicks, J.C.	Vaughn	Myer, W.C.	Hargadine			
4	29	36	61	62	63	64
Barnes, A.S.	Wightman	Mark, J.	Farnham	Billings		
3	30	35	62	63	64	65
Phelps	Isbell	Fordyce, Asa	Jackson, D.H.	Reeland	Butler, G.S.	
2	31	34	63	64	65	66
Miller, Geo.	Martin, L. Mc Bride, Pracht.	G.A.R.	Van Dyke	Dwigans	McMahon	
1	32	33	64	65	66	67
Rhodes, Mitchell, Johnson.	Crawford, J.	Wilcox, A.J.	Meiinger	Meiinger	Helm	
152	147	146	141	140	135	134
Calloun, S.H.	Davis	Stanley J.	Brouer	Norris	Hyde, D.P.	
151	148	145	142	139	136	133
Tomseth J.	Moore, Isaac	Adams, Michael	Brown, J.	Wagner, B.R.	Welch, Comp. Various ones	
150	149	144	143	138	137	132
Briggs	Davis	Cunningham, C.	Brown, T.D.	Miller, E.	Bryant T.	
153	154	153	152	151	150	149
Sauser, J.T.	Fowler, L.H.	Cartleton	Van Ripen	Thompson		

HARGADINE CEMETERY

Hargadine Cemetery
Total = 1.40 Acres

197	198	199
169	168	167
Toolhouse	Froman, C.E.	Froman, C.E.
162	161	160
Fronting Coal-chase	Froman, C.E.	Froman, C.E.
112	113	114
Radcliff, A.	Drake & Litwiler - Various ones	Simons
111	110	109
Drake, E.M.	Weart, J.	Durfee
110	109	108
Gunton, M.	Parke, C.W.	Halm
109	108	107
Kilgore, G.S.	Carbett, Bailey	Foster, C.J.
108	107	106
Foster, C.J.	Phillips, E.J.	Klum
107	106	105
VanNatta	Frizzell, C.F.	Klum
106	105	104
Billings, G.H.	Lindsay, C.	Blevin, R.H.
105	104	103
Gridley, Rhodes, others.	Monby	Sache, M.
104	103	102
Radcliff, B.	Britson, J.N.	Cole, T.
103	102	101
Herrin, J.G.	Howard, H.	Adams
102	101	100
Long, C.B.	Potter, S.J.	Panich
101	100	99
Hargadine, Geo.	Weeks	Adam
100	99	98
Restison	Obenchain	Badger
99	98	97
Hensley R.C.	Badger	Badger
98	97	96
Boore, Ordalia	Armitage, W.H.	Bland, Chas
97	96	95
Mills, Mrs. W.	Estes, J.M.	Young, M.
134	129	129
Rose, M.E.	Alden, Dr.	A.R.A. Ash
133	130	130
Ewart, Mand.	Various ones	Various ones
132	131	131
Ivin, Geo	Gowland, J.E.	Brook
129	128	128
McCartly	Colan	Colan

U.K. DEED 8916-8967