

Fordyce Commercial Historic District

Name of Property
NPS Form 10-900
(Oct.1990)

Dallas, Arkansas

County and State

RECEIVED 02200

OMB NO. 1024-0018

APR - 9 2008

NAT. REGISTER OF HISTORIC PLACES
NATIONAL PARK SERVICE

436

United States Department of the Interior
National Park Service

National Register of Historic Places Registration Form

This form is for use in nominating or requesting determinations for individual properties and districts. See instructions in *How to Complete the National Register of Historic Places Registration Form* (National Register Bulletin 16A). Complete each item by marking "x" in the appropriate box or by entering the information requested. If any item does not apply to the property being documented, enter "N/A" for "not applicable." For functions, architectural classification, materials, and areas of significance, enter only categories and subcategories from the instructions. Place additional entries and narrative items on continuation sheets (NPS Form 10-900a). Use a typewriter, word processor, or computer, to complete all items.

1. Name of Property

Historic name: Fordyce Commercial Historical District

Other Names/Site Number: DA0029; DA0062; DA0071 – DA0075; DA0077; DA0079 – DA0083; DA0085; DA0086; DA00189; DA0190; DA0195; DA0207-DA0228; DA0230-DA0235; DA236-DA00247; DA0248-DA0250

2. Location

Street & Number: Roughly bounded by Oak Street, 5th Street, Spring Street, and Hwy. 274.

☐ not for publication

City or Town Fordyce

☐ vicinity

State Arkansas Code AR County Dallas Code 039 zip code 71742

3. State/Federal Agency Certification

☒ request for determination of eligibility meets the documentation standards for registering properties in the National Register of Historic Places and meets the procedural and professional requirements set forth in 36 CFR Part 60. In my opinion, the property ☒ meets ☐ does not meet the National Register Criteria. I recommend that this property be considered significant ☐ nationally ☐ statewide ☒ locally. (☐ See continuation sheet for additional comments.)

Signature of certifying official/Title

Date

Arkansas Historic Preservation Program
State or Federal agency and bureau

In my opinion, the property ☒ meets ☐ does not meet the National Register criteria. (☐ See continuation sheet for additional comments.)

Signature of commenting or other official

Date

State or Federal agency and bureau

4. National Park Service Certification

I hereby certify that this property is:

- ☒ entered in the National Register
- ☐ See continuation sheet.
- ☐ determined eligible for the National Register
- ☐ See continuation sheet.
- ☐ determined not eligible for the National Register
- ☐ removed from the National Register
- ☐ other (explain):

Signature of the Keeper

Date of Action

Edson H. Beall

5-20-08

5. Classification**Ownership of Property**

(Check as many boxes as apply)

- ☒ private
☒ public-local
☐ public-State
☐ public-Federal

Category of Property

(Check only one box)

- ☐ building(s)
☒ district
☐ site
☐ structure
☐ object

Number of Resources within Property

(Do not include previously listed resources in the count.)

Contributing	Noncontributing	
25	25	buildings
	6 (vacant lots)	sites
		structures
		objects
25	31	Total

Name of related multiple property listing

(Enter "N/A" if property is not part of a multiple property listing.)

N/A

Number of contributing resources previously listed in the National Register

5

6. Function or Use**Historic Functions**

(Enter categories from instructions)

COMMERCE/TRADE/Business
COMMERCE/TRADE/Financial Institution
COMMERCE/TRADE/Professional
COMMERCE/TRADE/Department Store
COMMERCE/TRADE/Restaurant
GOVERNMENT/Post Office
RECREATION AND CULTURE/Theater

Current Functions

(Enter categories from instructions)

COMMERCE/TRADE/Business
RECREATION AND CULTURE/ Museum
COMMERCE/TRADE/Specialty Store
COMMERCE/TRADE/Professional
COMMERCE/TRADE/Restaurant

7. Description**Architectural Classification**

(Enter categories from instructions)

Late 19th and Early 20th Century American Movements/
Commercial Style
Late Victorian/Renaissance
Late Victorian/Romanesque
Mediterranean/Craftsman

Materials

(Enter categories from instructions)

Foundation: brick, concrete, wood
Roof: Metal, Asphalt, Tile
Walls: Brick, Concrete, Stucco, Wood, Stone
Other:

(Describe the historic and current condition of the property on one or more continuation sheets.)

See Continuation Sheets

United States Department of the Interior
National Park Service

National Register of Historic Places

Continuation Sheet

Section Number 7 Page 1 .

SUMMARY

The Fordyce Commercial Historic District is located 68 miles south of Little Rock in Fordyce, the County Seat of Dallas County, Arkansas. In the 1870's, Captain Samuel W. Fordyce rode horseback from Cairo, Illinois, to Texarkana, Arkansas, trying to determine the best route for the Texas and St. Louis Railway Co., better known as the Cotton Belt. He selected this area and gave it his name, Fordyce. The town was established in 1882.

The district is being nominated to the National Register of Historic Places under Criterion A for its contribution to the history of the community and for properties in the district that reflect the events that impacted the life of the community. The Fordyce Commercial Historic District is being nominated with local significance to the National Register of Historic Place under Criterion C for the good example of late 19th and early 20th century commercial style buildings found in the district. The District is comprised of late 19th and early 20th century American Movement commercial style, late Victorian/ Renaissance style, and late Victorian/Romanesque style buildings. The period of significance is from c.1884-1958.

There are 61 resources in the Fordyce Commercial Historic District. Five of these resources are individually listed properties in the National Register of Historic Places. There are 25 contributing resources (41.0%). Also included are 31 non-contributing resources (50.8%), which includes six vacant lots. (Without the vacant lots figured in, the district has an even split between contributing and non-contributing resources of 41.0% each. However, that does not include the individually-listed properties.) The 5 individually listed properties are (8.2%) of the number of

United States Department of the Interior
National Park Service

National Register of Historic Places

Continuation Sheet

Section Number 7 Page 2

properties. The buildings in this district reflect the economy in the town of Fordyce at different times in its history.

ELABORATION

As mentioned in the summary, Fordyce was established on the railroad route. Fordyce then grew along the railroad tracks, with wooden buildings being built on Front Street, which was later changed to 1st Street. As the economy improved and the town grew, the buildings were built of bricks, and the move away from the railroad tracks began. North Main Street put a little distance between the businesses that were being built and the noisy clamor of the area around the railroad tracks.

As in most towns, Fordyce has some historically significant anchor buildings. One of the anchors of the Fordyce Commercial Historic District is the Home Accident Insurance Company Building. It was constructed in 1908 at 300-302 N. Main Street. The architect was Charles Thompson. It was listed in the National Register of Historic Places on December 22, 1982. It is built in Late Victorian Romanesque Style. It is a two-story brick building with a beveled front entry. Above the beveled front entry is a turret, topped with a dome with a spire on top. The dome appears to be built of copper. The roof is flat, with asphalt roofing material, and there is a parapet. The interior has some original pressed tin ceilings remaining, and original tile covers a portion of the downstairs floors. The staircase railing and woodwork are in excellent condition. A restaurant currently occupies the building.

Another important anchor building for this district is the Nutt-Trussell Building located at 202 N. Main Street. It

United States Department of the Interior
National Park Service

National Register of Historic Places

Continuation Sheet

Section Number 7 Page 3

was built in 1883 and stucco was added in the early 1920's. It has also been individually listed in the National Register of Historic Places (3/04/01.) The Dallas County Museum Annex now occupies this building. It is built in late 18th and early 19th century American movements commercial style. The two-story brick building has 2,800 square feet on the first-floor level, and the ceilings are twelve feet tall. It is the first two-story building in Fordyce. Built by T. M. Nutt, it was built of brick and stone. Some renovations were necessary and a wood canopy has been added over the front façade. The interior of the building has much of the original materials and the integrity of the building has not been altered by the changes. The 2nd floor space was used for many years by the E.M. Lodge No. 363, which was organized in 1879. The lodge rented the front part of the second-story space and the back half of the second floor was leased at one time by the Home Telephone Company.

The Benton Building #2 at 100-108 W. 4th Street is another building that anchors the district. The large brick building houses four businesses. One of the most well-known businesses in town, the Klappenbach Bakery, is located in the Benton Building. Built in 1945 in the Colonial Revival style, it has a center gabled front (south) façade. The east side of the south façade has three dormer windows in the hipped roof line. As mentioned the Klappenbach Bakery is one of occupants of this building. The Klappenbach Bakery is well-known in the state of Arkansas. It has been voted "Arkansas' Best Bakery." The bakery has a substantial mail-order business and ships its baked goods to all parts of the United States. Klappenbach's Bakery has been featured in "Southern Living" magazine twice.

United States Department of the Interior
National Park Service

National Register of Historic Places

Continuation Sheet

Section Number 7 Page 4 .

The old Post Office Building at 220 N. Main Street is also an important resource in the district. It is an anchor because of the style of architecture and for its importance as the Post Office. It was built in 1917 in late Victorian Renaissance style. It is a large square brick building with a flat roof and a full basement. The front (west) façade is symmetrical, with two windows on each side of the centered front porch. There are six steps leading to the entrance. A box-like structure has been added to the entrance, with doors on the north and south sides of the addition. A concrete post is at the bottom of each side of the steps. A street lamp tops each post. The Post Office has moved to a new location and the Dallas County Office of Emergency Services now occupies the building.

The predominant style of architecture in the Fordyce Commercial Historic District is late 19th and early 20th century American movements commercial style. There are, however, a few high-style buildings. Two of the buildings in the district were designed by architect Charles Thompson.

Charles Thompson designed several buildings and residences in Fordyce. However, not all of the early buildings in this district were large or grand or designed by a famous architect.

Bob's Barber Shop is at 106 N. Main Street in a building that was built C. 1895. It is a rectangular brick building on piers. Bob's Barber Shop has occupied this building since 1960. It was built to house a general mercantile. May's Mercantile moved into this building in 1905. Bob Nichols, owner of Bob's Barber Shop, pointed out the

United States Department of the Interior
National Park Service

National Register of Historic Places

Continuation Sheet

Section Number 7 Page 5 .

etched-out circles in the sidewalk where the pickle drums had been set on the sidewalk.

The building at 301 N. Main Street was also designed by architect Charles Thompson. The historic Fordyce Bank & Trust Building located across from the insurance building, was almost a mirror image architecturally of that building. It is a rectangular shaped brick building. It once had a turret and dome similar to the one in the Home Accident Insurance Company Building. The turret has been removed and the building has been dramatically altered. The ornate beveled entry was covered when a new brick façade was added. The entry and the columns have been encased in a glass wall that has been partially covered with interior wall material. A portion of that entry can be viewed from inside The Jewelry Box, a gift and jewelry shop.

The Old Pool Hall Building at 103-105 N. Main Street was built c. 1900. It is a 2-story brick building with a flat roof and a parapet. There is a crest in the middle of the parapet, and a narrow cornice. It is a rectangular shaped building and has been partially covered with new bricks in the west (rear) façade. The last occupant was B.B.'s Grill. It is currently vacant.

Paul's Service Center is located at 121 E. 2nd Street. It is historically known as the Marathon Oil Co. Building. The roof on the service portico is red tiled and the ceiling is pressed tin. The old Marathon Oil Logo hangs on the front of the portico above the gasoline bay. The building is a one story brick building, painted white. This building is individually listed in the National Register of Historic Places. (5/10/2001.)

United States Department of the Interior
National Park Service

National Register of Historic Places

Continuation Sheet

Section Number 7 Page 6

Williams Cleaners Building at 109 E. 1st Street is a rectangular brick building. It was built in 1925 in late 19th and early 20th century American movements commercial style. It has a flat roof with a tall parapet in front. Williams Cleaners has been in the building since 1978. The building next to the cleaners building burned several years ago and the west façade is blackened in patches, and the heat caused the mortar and the bricks to become slightly disfigured.

At 113 E. 2nd Street is Rex's Liquor Store. It is also a late 19th and early 20th century American movements commercial style brick building, with a rectangular shape and a flat roof with a parapet. The front façade (north) has 2 plate glass windows with a single door centered between the windows. The side (east) façade has a drive-thru window and another single door. The building was built in 1925, and Rex's Liquor Store has occupied it since the 1970's.

Benton's Hardware Store #1 is located at 201 N. Main Street. It is a long narrow rectangular brick building in late 19th and early 20th century American movements commercial style. The construction date for the building is c. 1900. The windows on the east (rear) façade are covered with metal shutters. The windows on the south (side) façade are covered with plywood. In the 1920's this building was a movie theater. The riser at the back of the store is believed to be the theater stage.

The buildings in the 100 block of Main Street are some of the oldest in the district. These resources are built in late 19th and early 20th century American movements commercial style. Many of the buildings have been altered. Bob's Barber Shop is an exception. Built in 1902, it remains much as it was 100 years ago. The buildings at 101

United States Department of the Interior
National Park Service

National Register of Historic Places

Continuation Sheet

Section Number 7 Page 7 .

N. Main Street and at 103-105 N. Main Street are representative of the commercial styles of the early 1900s. The old Kauffman Café Building at 101 N. Main Street is a one-story brick building with some classical style influences on the front façade with a tall parapet and cornice. Also classic with dark brick and high ceilings and crested parapet is the building at 107 N. Main Street. The windows and much of the front façade are covered with wood siding, making it a non-contributing resource.

In the 200 block of N. Main Street, 12 of the buildings have been slip-covered or altered in some way to render them non-contributing. Benton Hardware Building #1, located in the old Lyric Theater Building, maintains much of the authenticity of the building, with the theater stage still intact. Benton Hardware is located at 201 N. Main Street. Across from the hardware is the Nutt-Trussell Building. This building was constructed in 1883. The building at 211 N. Main Street is a contributing resource as well as 213 N. Main Street, 215 N. Main Street, 217 N. Main Street, 219 N. Main Street, and 220 N. Main Street, which is the old Fordyce Post Office Building, built in 1918. These old buildings have maintained the integrity of purpose and style.

The 300 block of N. Main Street has a mixture of architecture. The Home Accident Insurance Company Building is in this block. The building across from the Home Accident Insurance Company Building was at one time a mirror-image of it. Numerous changes were made to the building, causing it to be considered a non-contributing resource. At the end of the block is the McKee Building, which houses the Dallas County Museum. It is a grand two-story building, with an impeccably maintained interior. The exterior has been slip-covered and altered irreparably and is therefore a non-contributing resource. In the

United States Department of the Interior
National Park Service

National Register of Historic Places

Continuation Sheet

Section Number 7 Page 8 .

middle of the block are single-story buildings in late 19th and early 20th century American movements commercial style. Many have cornices with dentils or other small ornamentation. These buildings were designed for function.

West 4th Street is dominated by the Benton Building. The Flower Pot Florist at 109 N. Main Street and the Triple B Wood Dealers in the ALLTEL Building are both single story late 19th and early 20th century American movements commercial style buildings. On West 4th, only these three buildings and 1 parking lot are in the district.

Two of the district's individually listed resources are on W. 1st Street. Located at the corner of N. Main Street & W. 1st Street, is the Cotton Belt Railroad Depot. The depot was built in 1925 in Mediterranean/Craftsman style of architecture. It was listed in the National Register of Historic Places on 6/11/92. The Tennessee, Alabama & Georgia Railway Steam Locomotive #101 (Ford) is located at the northwest corner of N. Main Street and the Union Pacific Railroad line. Built in 1922, it is a 2-8-0 Consolation locomotive built by the Baldwin Locomotive works. It was listed in the National Register of Historic Places on 1/24/2008. The other building on 1st Street is the Williams Cleaners, located at 109 East 1st Street. Williams Cleaners is a single-story late 19th and early 20th century American movements commercial style building.

The buildings in the Fordyce Commercial Historic District have provided services and entertainment for the citizens of Fordyce and Dallas County since the first mercantile opened its doors in 1884.

INTEGRITY

United States Department of the Interior
National Park Service

National Register of Historic Places

Continuation Sheet

Section Number 7 Page 9 .

Although it appears that a majority of the resources in the district are non-contributing, the integrity of the Fordyce Commercial Historic District has a strong visual connection to its period of significance. Interruptions in this district can be directly related to buildings that have had slipcovers placed over their front facades or the limited amount of infill. Although the ratio of contributing and non-contributing buildings is close, the district is still able to convey its significance. The non-contributing buildings largely constitute buildings that have had slipcovers placed over their front facades. In addition, the non-contributing resources include six vacant lots. In addition, the Fordyce Commercial Historic District has five resources that were previously listed in the National Register that further convey the district's period of significance. As a result, there is still a large concentration of historic buildings that are able to convey the district's architectural significance. The district is also able to convey its associations with the development of Fordyce because the buildings in the district do date from a wide range of periods, which illustrates the area's development throughout the late nineteenth and twentieth centuries.

National Register of Historic Places Continuation Sheet

Section Number 7 Page 9

<u>Resource</u>	<u>Address</u>	<u>Current Occupant / Historic Name</u>	<u>Map ID#</u>	<u>C, NC or IL</u>
DA0074	300-302 N. Main St.	Rock's Place Restaurant / Home Accident Insurance Co.	1	IL
DA0226	301 N. Main St.	The Jewelry Box / Fordyce Bank & Trust Co.	2	NC
DA0227	303 N. Main St.	The Jewelry Box North Bldg. / Bldg. @ 304 N. Main St.	3	NC
DA0072	304 N. Main St.	Wynne Law Firm Building	4	C
DA0228	305 N. Main St.	Red Bug Alley Parking Lot / Site of Amuse-U Theater	5	NC
DA0229	306 N. Main St.	Fordyce Office Products / Bldg. @ 306 N. Main St.	6	C
DA0071	307 N. Main St.	Brookshire Photography / W.S. Alexander Photography Studio	7	C
DA0230	308 N. Main St.	Wynne & Wynne Law Firm / Fordyce Fire Station	8	NC
DA0231	309 N. Main St.	Harris Title/Fordyce Real Estate / Bldg. @ 309 N. Main St.	9	C

Chart Reference:

C—Contributing

NC—Noncontributing

IL—Individually Listed

National Register of Historic Places Continuation Sheet

Section Number 7 Page 10

DA0232	310-314 N. Main St.	Benton Furniture Co. / Benton Bldg. #1	10	NC
DA0233	311 N. Main St.	Gentle Touch Jewelers / Bumgardenar Jewelry Store	11	C
DA0234	313 N. Main St.	Parking Lot / Site of OTASCO Store	12	NC
DA0195	316 N. Main St.	Centennial Bank Bldg. / Site of Chet Darling Mobil Sta.	13	NC
DA0235	N.E. Corner of N. Main St. & E. 4 th St.	Parking Lot / 1st United Methodist Church Parking Lot	14	NC
DA0236	403 N. Main St.	W. D's Arcade / Bldg. @ 403 N. Main St.	15	C
DA0237	406 N. Main St.	Light House Building / Evans Chevrolet Dealership	16	C
DA0238	109 E. 1 st St.	Williams' Cleaners / Bldg. @ 109 E. 1 st St.	17	C
DA0239	113 W. 2 nd St.	Fordyce Auto Body Shop / Bldg. @ 113 W. 2 nd St.	18	C
DA0240	117 W. 2 nd St.	Bobbie's Beauty Shop / Bldg. @ 117 W. 2 nd St.	19	C
DA0075	Vacant Lot	Vacant Lot / Site of Holt Builder's Supply	20	NC

Chart Reference:

C—Contributing

NC—Noncontributing

IL—Individually Listed

National Register of Historic Places Continuation Sheet

Section Number 7 Page 11

DA0241	111 E. 2 nd St.	Vacant Bldg ./ Clark's Seed Store	21	C
DA0242	113 E. 2 nd St.	Rex's Liquor Store / Bldg. @ 113 E. 2 nd St.	22	C
DA0190	121 E. 2 nd St.	Paul's Service Center / Marathon Oil Co. Service Station	23	IL
DA0073	108-110 W. 3 rd St.	Time-Line Sun Park / Site of Koonce Bldg.	24	NC
DA0243	114 W. 3 rd St.	Polka Dot Connection Gifts / Bldg. @ 114 W. 3 rd St.	25	NC
DA0244	116 W. 3 rd St.	AR. State Revenue Office / Bldg. @ 116 W. 3 rd St.	26	NC
DA0245	117 W. 3 rd St.	Campbell & Co. / 1 st National Bank of Fordyce-Drive in Bank	27	NC
DA0246	119-123 W. 3 rd St.	Fordyce C of C & CPME Credit Union / Graham Motor Company Bldg.	28	C
DA0247	N.E. Corner of W. 3 rd St. & Oak St.	Parking Lot/Lot @ the NE Corner of W. 3 rd and Oak Streets	29	NC
DA0248	100-108 W. 4 th St.	Benton Building / Benton Bldg. #2	30	C

Chart Reference:

C—Contributing

NC—Noncontributing

IL—Individually Listed

National Register of Historic Places Continuation Sheet

Section Number 7 Page 12

DA0249	109 W. 4 th St.	The Flower Pot Florist / Bldg. @ 109 W. 4 th Street	31	C
DA0250	111 W. 4 th St.	Triple B Wood Dealers / ALLTEL Bldg.	32	NC
DA0207	S.W. Corner N. Main & W. 1 st Sts.	Steam Locomotive #101	33	IL
DA0208	100 N. Main St.	Solid Rock MBA Church / Sam Nutt's Grocery	34	NC
DA0077	101 N. Main St.	Colors Beauty Supply / Kauffman Café	35	C
DA0079	103-105 N. Main St.	B.B.,Grill / Building @ 103-105 N. Main St.	36	C
DA0082	106 N. Main St.	Bob's Barber Shop / May's Mercantile Store	37	C
DA0209	107 N. Main St.	Crystals Boutique / Bldg. @ 107 N. Main St.	38	NC
DA0210	109 N. Main St.	Tyrone's Used Furniture Store / J. T. Matthews Clothing Store	39	NC
DA0211	110 N. Main St.	William's Thrift Store / Bldg. @ 110 N. Main St.	40	NC

Chart Reference:

C—Contributing

NC—Noncontributing

IL—Individually Listed

National Register of Historic Places Continuation Sheet

Section Number 7 Page 13

DA0081	201 N. Main St.	Benton Hardware # 1 / Lyric Theater	41	C
DA0189	202 N. Main St.	Dallas County Museum Annex / Nutt-Trussell Bldg.	42	IL
DA0212	203 N. Main St.	Benton Hardware # 2 / Sterlings South Bldg.	43	NC
DA0213	204 N. Main St.	Vacant Building / Bldg. @ 204 N. Main St.	44	NC
DA0214	205 N. Main St.	Benton Hardware #3 / Sterling's N. Bldg.	45	NC
DA0215	206A N. Main St.	Ruin / Site of Fordyce Furniture Co.	46	NC
DA0216	206B N. Main St.	Vacant Building / Bldg. @ 206B N. Main St,	47	NC
DA0217	207 N. Main St.	S.W. Printing Co. / Bldg. @ 207 N. Main St.	48	NC
DA0218	208 N. Main St.	The P.H.& K Shoe Store / Bldg. @ 208 N. Main St.	49	NC
DA0219	209 N. Main St.	Vacant Building / Culpepper's Restaurant	50	NC
DA0080	210 N. Main St.	Main Street Flea Market #1 / The Shoe Box Bldg.	51	NC

Chart Reference:

C—Contributing

NC—Noncontributing

IL—Individually Listed

National Register of Historic Places Continuation Sheet

Section Number 7 Page 14

DA0220	211 N. Main St.	Vacant Building/Bldg. @ 211 N. Main St.	52	C
DA0221	212 N. Main St.	Main Street Flea Market #2/Bldg. @ 212 N. Main St.	53	NC
DA0083	213 N. Main St.	Main Street Flea Market #3 / Grand Leader Bldg.	54	C
DA0222	214 N. Main St.	Peace Park / Site of the Good Luck Store	55	NC
DA0085	215 N. Main St.	Today's Styles / Merle's House of Fashion	56	C
DA0223	217 N. Main St.	Adair Construction Co. / A.B. Banks Bldg. #1	57	C
DA0086	219 N. Main St.	Main Street Antiques / Dedman's Mercantile Store	58	C
DA0224	220 N. Main St.	Dallas Co. Office of Emergency Services / Fordyce Post Office	59	C
DA0225	221 N. Main St.	Dallas County Museum / McKee Bldg.	60	NC
DA0062	Corner of N. Main & W. 1 st St.	Cotton Belt Railroad Depot	61	IL

8. Statement of Significance

Applicable National Register Criteria

(Mark "x" in one or more boxes for the criteria qualifying the property for National Register listing)

- ☒ A Property is associated with events that have made a significant contribution to the broad patterns of our history.
- ☐ B Property is associated with the lives of persons significant in our past.
- ☒ C Property embodies the distinctive characteristics of a type, period, or method of construction or represents the work of a master, or possesses high artistic values, or represents a significant and distinguishable entity whose components lack individual distinction.
- ☐ D Property has yielded, or is likely to yield information important in prehistory or history.

Criteria Considerations

(Mark "X" in all the boxes that apply.)

Property is:

- ☐ A owned by a religious institution or used for religious purposes.
- ☐ B removed from its original location.
- ☐ C a birthplace or a grave.
- ☐ D a cemetery.
- ☐ E a reconstructed building, object, or structure.
- ☐ F a commemorative property.
- ☐ G less than 50 years of age or achieved significance within the past 50 years.

Narrative Statement of Significance

(Explain the significance of the property on one or more continuation sheets.)

9. Major Bibliographical References

(Cite the books, articles, and other sources used in preparing this form on one or more continuation sheets.)

Previous documentation on file (NPS):

- ☐ preliminary determination of individual listing (36 CFR 67) has been requested.
- ☐ previously listed in the National Register
- ☐ previously determined eligible by the National Register
- ☐ designated a National Historic Landmark
- ☐ recorded by Historic American Buildings Survey # _____
- ☐ recorded by Historic American Engineering Record # _____

Primary Location of Additional Data

- ☒ State Historic Preservation Office
- ☐ Other State agency
- ☐ Federal agency
- ☐ Local government
- ☐ University
- ☐ Other

Name of repository:

Areas of Significance

(Enter categories from instructions)

Architecture

Commerce

Period of Significance

c.1884-1958

Significant Dates

c.1884-1958

Significant Person

(Complete if Criterion B is marked above)

Cultural Affiliation

Architect/Builder

Charles Thompson, Architect

United States Department of the Interior
National Park Service

National Register of Historic Places

Continuation Sheet

Section Number 8 Page 1

SUMMARY

The Fordyce Commercial Historic District is located in Fordyce, Dallas County, Arkansas. Dallas County was formed in 1844, (effective in 1845) by an act of the Arkansas Legislature. It was formed from a combined territory of land east of the Ouachita River, cut from land in Clark County and Bradley County. The area covers 672 square miles.

Fordyce is the county seat of Dallas County. The early development of Fordyce was brought about by Captain Samuel W. Fordyce when he selected the area best suited for the route for the Texas and St. Louis Railway Company, the Cotton Belt. That area was the land around Fordyce. The town was established in 1882 and was named for Captain Fordyce.

The Fordyce Commercial Historic District is being nominated to the National Register of Historic Places with local significance under Criterion A for its association with the farming and timber industries, as well as the commercial history of Fordyce. It is also being nominated with local significance under Criterion C for the distinctive and varied architectural styles in the proposed Fordyce Commercial Historic District.

United States Department of the Interior
National Park Service

National Register of Historic Places

Continuation Sheet

Section Number 8 Page 2

ELABORATION

Dallas County was formed by the Arkansas General Assembly in 1844. That year Arkansas was greatly involved in the presidential campaign, strongly supporting James K. Polk for president in the presidential campaign. The county was named for Vice-President George Mifflin Dallas, running mate with James K. Polk.

Fordyce has not always been the county seat of Dallas County. At one time the county seat was in Princeton. In 1845, Joseph Gray built a three-room house for Presley Watts. Built with hand-dressed lumber and pegs and square nails, the little house served as the first Dallas County Courthouse while the courthouse was being built in Princeton.

The first census was taken in Dallas County in 1850. The population of 6,877 was listed. In 1860, the population had reached 8,283. During the Civil War, the marauding troops caused such a panic among the citizens of Dallas County that the population dropped to 5,707. During the Civil War, the road between Little Rock and Camden, and the road between Pine Bluff and Arkadelphia intersected in Dallas County. The Arkansas battles were fought by troops constantly on the move between these two roads. The foraging by Confederate and Federal troops stripped the crops and livestock from the plantations and farms in the area. Dallas County citizens began leaving their homes and fleeing to Texas to escape the terror of war.

In the 1870s, Captain Samuel W. Fordyce rode through the area and determined that the Fordyce area was the best route for the Texas and St. Louis Railway Co., better known as the Cotton Belt Railroad. The town was established in

United States Department of the Interior
National Park Service

National Register of Historic Places

Continuation Sheet

Section Number 8 Page 3 .

1882. With the combination of a railroad, a town and opportunities in the timber industry, people began moving back to Dallas County and Fordyce. The county seat was moved from Princeton to Fordyce.

By 1901, 24 buildings had been built in the Fordyce Commercial Historic District. Most of these were on North Main Street. One of these buildings, the Nutt-Trussell Building at 202 North Main Street is the oldest building in the district, built c.1884. The majority of these buildings were built in late 19th century and early 20th century American Movements Commercial Style. These building were a result of the railroad and the growing timber industry.

The 1910 census showed the population of Dallas County had reached 18,621. Smaller towns in the area suffered loss of population as the citizens moved to Fordyce in order to take advantage of opportunities in the timber industry and to be near the railroads. Passenger trains made it possible to get from Fordyce to limitless destinations. The railroads had an enormous impact on the lives of the people and the economy of Fordyce.

Fordyce grew up along the Cotton Belt Railroad tracks and depot. The timber business was the primary economic engine. "Loggers used train cars instead of trucks to haul their logs out of the woods in the early days. As logging crews went into a wooded area, they laid railroad tracks, cut trees on one side of the tracks, and loaded logs onto the rail cars. When they reached the end of the cutting area, the loggers would cut trees on the other side of the tracks, load those logs onto the railroad cars, and take up the tracks behind them as the train backed up."

United States Department of the Interior
National Park Service

National Register of Historic Places

Continuation Sheet

Section Number 8 Page 4

Logging camps were a way of life in Dallas County. In the logging camps, almost everything was built to be portable. Families moved from camp to camp when one area was cut, they moved to the next. Their homes were built out of boxcars so they could be moved by rail. In the Hanks Addition, several of the boxcar homes still exist. They are located near the old Fordyce mill quarters. The last of the logging camps in Dallas County was closed in the early 1940s.

Timber is as important in Dallas County and Fordyce today as it was at the turn of the century. In 1892, E.S. Crossett, C.W. Gates, and J.W. Watzek, paid \$1,500 each and purchased the Fordyce Lumber Company. Fordyce Lumber Company became a part of a corporation that included: Crossett Lumber Company in Crossett, Arkansas; the Jackson Lumber Company in Lockhart, Alabama; and the Crossett Western Company in Wauna, Oregon. The Georgia-Pacific Corporation purchased the Fordyce Lumber Company in 1963. Georgia-Pacific opened the world's first southern pine plywood plant in Fordyce in 1963. The Fordyce facility has continued to upgrade and is presently state-of-the-art.

In 1997 International Paper Company moved its air bag division, Ride Rite, to Fordyce. The plant employs 185 employees, working three shifts per day, five days a week. The company manufactures disposable, inflatable dunnage paper bags used to brace cargo during shipment. They have an annual payroll of over \$6 million.

Historically, in Dallas County, the focus of the health of the economy has been on the timber industry. Timber was the money crop in Dallas County and the buying and selling of lumber affected all of the population, even those not working in the industry. The merchants in the Fordyce Commercial Historic District were dependent upon the price

United States Department of the Interior
National Park Service

National Register of Historic Places

Continuation Sheet

Section Number 8 Page 5

of timber. The sawmill owners, loggers, planers, everyone was dependent upon the merchants to provide the services and merchandise they needed. The interdependence was beneficial to all concerned. The financial institutions on North Main Street were essential to the timber growers. The insurance industry which was begun on North Main Street by A.B. Banks in the Home Fire Insurance Company Building in 1905, was essential to the long-range economic planning of families and industry. Attorneys, doctors, bookkeepers, timber brokers and other businessmen flourished in the buildings in the Fordyce Commercial Historic District. There were also pool halls, cafés, drug stores, millineries, mercantile stores, grocery stores, and movie theaters in the proposed district.

The Benton Hardware #1, according to local lore, was the site of the old Lyric Theater. It gained fame because it was the location of the famous "Paul Bryant versus The Bear" incident. In 1927, as a publicity stunt, a muzzled bear was brought into the theater. The audience was challenged to find someone willing to go onto the stage and wrestle with the bear. Paul Bryant accepted the challenge, thus receiving the nickname "Bear." The young man went on to become the famed coach of University of Alabama, Coach "Bear" Bryant. The stage on which he wrestled the bear is in the rear section of the Benton Hardware at 201 N. Main Street.

The Wynne Family is well known and one of the earliest families in Fordyce. The Wynne & Wynne Law Firm at 308 N. Main Street has had four generations of attorneys in Fordyce. The building currently housing the law firm was once the Fire Station.

Bob Nichols, who owns Bob's Barber Shop, had an interesting story about his building. It was once a mercantile. The

United States Department of the Interior
National Park Service

National Register of Historic Places

Continuation Sheet

Section Number 8 Page 6

barrels of pickles were rolled up the sidewalk from the train station. The barrels of pickles were set on either side of the front door. The vinegar, over a long period of time etched large circles in the concrete where each of the barrels had set. The building is located at 106 North Main Street.

The buildings at the south end of North Main Street have had the most alterations in this district. Many of the buildings have been covered with a vertical vinyl siding. Some of the buildings are completely wrapped in the siding, allowing no view of the original building. The rear facades of the buildings facing east are over-grown with brush and vines, making it difficult to see the façade.

The buildings in the Fordyce Commercial Historic District were built adjacent to the courthouse and the railroad tracks and depot, the historic core of the community. The Fordyce Commercial Historic District reflects the historic growth of the commercial core of Fordyce, and the buildings in the district reflect the popular architectural styles of the late nineteenth and early twentieth centuries.

STATEMENT OF SIGNIFICANCE

The Fordyce Commercial Historic District is being nominated to the National Register of Historic Places with local significance under Criterion A for its association with agricultural and commercial history in Fordyce and Dallas County. In addition, the Fordyce Commercial Historic District is being nominated to the National Register of Historic Places with local significance under Criterion C for its buildings which are good examples of late 19th and early 20th Century American movement commercial style, late Victorian renaissance, Victorian Romanesque styles and Craftsman.

National Register of Historic Places Continuation Sheet

Section Number 9 Page 1 .

BIBLIOGRAPHY

Arnold, Bob. Personal Interview. 15 Nov. 2007. Fordyce, AR.

Arkansas Historic Preservation Program. 18 Nov. 2007. Little Rock, AR.

Dallas County Museum. 14 Nov. 2007. Fordyce, Arkansas

Lyons, William. Personal Interview. 14 Nov. 2007. Fordyce, AR.

Phillips, Agnes Wynne. Personal Interview. 15 Nov. 2007. Fordyce, AR.

Phillips, Col. James H. Phillips. Personal Interview. 16 Nov 2007. Fordyce, AR.

Fordyce Commercial Historic District
Name of Property

Dallas, Arkansas
County and State

10. Geographical Data

Acreage of Property : Approximately 9 Acres

UTM References

(Place additional UTM references on a continuation sheet)

	Zone	Easting	Northing		Zone	Easting	Northing
1	15	554217	3741503	3	15	554582	3741239
2	15	554430	3741554	4	15	554394	3741122

☐ See continuation sheet.

Verbal Boundary Description

(Describe the boundaries of the property on a continuation sheet.)

Boundary Justification

(Explain why the boundaries were selected on a continuation sheet.)

11. Form Prepared By

name/title Ralph S. Wilcox, National Register & Survey Coordinator

organization Arkansas Historic Preservation Program date 12/7/2007

street & number 1500 Tower Building, 323 Center Street telephone (501) 324-9787

city or town Little Rock state AR zip code 72201

Additional Documentation

Submit the following items with the completed form:

Continuation Sheets

Maps

A **USGS map** (7.5 or 15 minute series) indicating the property's location.

A **Sketch map** for historic districts and properties having large acreage or numerous resources.

Photographs

Representative **black and white photographs** of the property.

Additional items

(Check with the SHPO or FPO for any additional items)

Property Owner

(Complete this item at the request of the SHPO or FPO.)

name _____

street & number _____ telephone _____

city or town _____ state _____ zip code _____

Paperwork Reduction Act Statement: This information is being collected for applications to the National Register of Historic Places to nominate properties for listing or determine eligibility for listing, to list properties, and to amend existing listings. Response to this request is required to obtain a benefit in accordance with the National Historic Preservation Act, as amended (16 U.S.C. 470 *et seq.*).

Estimated Burden Statement: Public reporting burden for this form is estimated to average 18.1 hours per response including the time for reviewing instructions, gathering and maintaining data, and completing and reviewing the form. Direct comments regarding this burden estimate or any aspect of this form to the Chief, Administrative Services Division, National Park Service, P.O. Box 37127, Washington, DC 20013-7127; and the Office of Management and Budget, Paperwork Reductions Project (1024-0018), Washington, DC 20503.

United States Department of the Interior
National Park Service

National Register of Historic Places

Continuation Sheet

Section Number 10 Page 1.

Verbal Boundary

From the center of N. Main Street and 1st Street, travel easterly, going around the building at 109 E. 1st Street to N. Spring Street, then proceeding north on N. Spring Street to E. 5th Street. Then proceed east on E. 5th Street to N. Main Street. Then proceed south on N. Main Street around the rear of the building at 403 N. Main to the alley behind the building at 100-108 W. 4th Street. Then proceed south across E. 4th Street, then proceed east on E. 4th Street to N. Oak Street. Then proceed south on N. Oak Street to the railroad tracks. Then proceed east on the railroad tracks past the depot to N. Main to the point of beginning.

Boundary Justification

This boundary was drawn to include properties in the downtown Fordyce Commercial Historic District that maintain the highest level of historic integrity in architecture and the relationship of these buildings to commerce and timber industry.

UNITED STATES DEPARTMENT OF THE INTERIOR
NATIONAL PARK SERVICE

NATIONAL REGISTER OF HISTORIC PLACES
EVALUATION/RETURN SHEET

REQUESTED ACTION: NOMINATION

PROPERTY NAME: Fordyce Commercial Historic District

MULTIPLE
NAME:

STATE & COUNTY: ARKANSAS, Dallas

DATE RECEIVED: 4/09/08 DATE OF PENDING LIST: 4/28/08
DATE OF 16TH DAY: 5/13/08 DATE OF 45TH DAY: 5/23/08
DATE OF WEEKLY LIST:

REFERENCE NUMBER: 08000436

REASONS FOR REVIEW:

APPEAL: N DATA PROBLEM: N LANDSCAPE: N LESS THAN 50 YEARS: N
OTHER: Y N PDIL: e Commercial N PERIOD: N PROGRAM UNAPPROVED: N
REQUEST: N SAMPLE: N SLR DRAFT: N NATIONAL: N

COMMENT WAIVER: N

☒ ACCEPT ☐ RETURN ☐ REJECT 5.20.08 DATE

ABSTRACT/SUMMARY COMMENTS:

DATE OF 16TH DAY: 5/13/08 DATE OF 45TH DAY: 5/23/08

Entered in
The National Register
of
Historic Places

RECOM./CRITERIA _____

REVIEWER _____ DISCIPLINE _____

TELEPHONE _____ DATE _____

DOCUMENTATION see attached comments Y/N see attached SLR Y/N

If a nomination is returned to the nominating authority, the nomination is no longer under consideration by the NPS.



Street Scape

200 Block of N. Main St., East side,
From Center of N. Main + W. 2nd
Streets, Shooting North.

Fordyce Commercial Historic District
Dallas County, AR

Kay Griffin

10/2/07

A.A.P.P.

Street Scape of N. Main St, east side,
From Center of N. Main St. + W. 2nd Street,
Shooting North

41

AA



Street SCAPE

EAST 3rd St. Shooting EAST from Center
of West 3rd

Fordyce Commercial Historic District
DALLAS County, AR.

KAY Griffin

10/20/07

A. H. P. P.

Street SCAPE of EAST 3rd St. Shooting
EAST from Center of W. 3rd

B



Street Scape

Shooting South on N. MAIN from center of
N. MAIN And 3rd St.

Fordyce Commercial Historic District
Dallas County, AR.

KAY Griffin

10/20/07

A. H. P. P.

Street Scape Shooting South on N. MAIN
from center of N. MAIN And 3rd St.

Shooting South on 200 Block of Main Street



Street SCAPE

200 BLOCK OF EAST Side of North MAIN ST.
Shooting South from West 3rd St. Old
Post office Bldg. in fore front of picture

Fordyce Commercial Historic District
DALLAS County, AR.

KAY Griffin

10/20/07

A. H. P. P.

200 block OF EAST side of North
MAIN street Street scape Shooting
South from West 3rd St. Old
Post office Bldg. in fore front
OF Picture

C



Street Scape

East 4th Street Shooting East

From W. Side of N. Main and
E. 4th

Fordyce Commercial Historic District
Dallas County, AR

Kay Griffin

10/2/07

A.H.P.P.

Street Scape of E. 4th Street
Shooting East from N. Main E. 4th

CC



Benton Bldg / Klappenbach Bakery

100 - 108 West 4th St.

Fordyce Commercial Historic District

DALLAS County, AR.

KAY Griffin

10 / 20 / 07

A. H. P. P.

Shooting South facade from South Side
of W. 4th St. Shooting North

CC



Brookshire Photography Bldg.
307 N. Main St.

Fordyce Commercial Historic District
DALLAS County, AR.

KAY Griffin

10 / 20 / 07

A. H. P. P.

Shot from East Side of N. Main
Front (^{West} ~~East~~) Facade Shooting West

F



Street Scape

EAST 4th Street from West side of MAIN ST. AND
4th Street

Fordyce Commercial Historic District
DALLAS County, AR.

KAY Griffin

10/20/07

A. H. P. P.

Street Scape of E 4th Street from West side
of MAIN ST. AND 4th St. Shooting East

H



Street SCAPE
West 4th Street shooting from E. side of N. MAIN
Fordyce Commercial Historic District
DALLAS County, AR.

KAY Griffin

10/20/07

A. H. P. P.

Street SCAPE of West 4th St. shooting
from East side of N. MAIN

J



Street Scape

400 block of N. Main St. taken from S.W.
corner of 4th Ave.

Fordyce Commercial Historic District
DALLAS County, AR.

KAY Griffin

10 / 20 / 07

A. H. P. P.

Street Scape of 400 block of N. Main St.
taken from S.W. corner of 4th Ave.

Shooting North

JJ



Street SCape

Shot of N. MAIN from N.E. corner of 4th
street shooting South

Fordyce Commercial Historic District
DALLAS County, AR.

KAY Griffin

10 / 20 / 09

A. H. P. P.

Street SCape shot of N. MAIN from N.E.
corner of 4th st. shooting South

K



W.D's Arcade Bldg.

403 N. MAIN St.

Fordyce Commercial Historic District

DALLAS County, AR.

KAY Griffin

10/20/07

A. H. P. P.

Shooting W. FAcade (Front) from
Center of N. MAIN St.

L



Street Scape

Shooting South on N. Main from W. 4th St.
Fordyce Commercial Historic District
DALLAS County, AR.

KAY Griffin

10 / 20 / 07

A. H. P. P.

Street Scape Shooting South on N. Main
From West 4th St.

M



Street Scape

West side of 300 Block of N. MAIN^{ST.} shooting North
From West 2nd

Fordyce Commercial Historic District
DALLAS County, AR.

KAY Griffin

10/20/07

A. H. P. P.

Street Scape of West side of 300 block of
N. MAIN st. shooting North from West 2nd

MM



STreet SCAPE

E. side of 100 block of N. MAIN shooting
North With Solid Rock M.B.A. Church
in fore ground

Fordyce Commercial Historic District
DALLAS County, AR.

KAY Griffin

10/20/07

A. H. P. P.

street scape of E. side of 100 block of
N. MAIN shooting North With Solid Rock
M.B.A. Church in fore ground from
W. 1st Street

P



STREET SCAPe

EAST 100 block of N. MAIN ST.
Looking North from E. 1ST

Fordyce Commercial Historic District
DALLAS County, AR.

KAY Griffin

10/20/07

A. H. P. P.

STREET SCAPe EAST 100 block of
N. MAIN ST., Looking North
From E. 1ST Shooting North

Q



WILLIAMS Cleaners
109 East 1st St.

Fordyce Commercial Historic District
DALLAS County, AR.

KAY Griffin

10/20/07

A. H. P. P.

Shot of North facade from North ~~front~~^{side}
of East 1st Street Shooting South

R



Street Scape

From Center of N MAIN down WEST
1ST AVE.

Fordyce Commercial Historic District
DALLAS County, AR.

KAY Griffin

10/20/27

A. H. P. P.

Street Scape from Center of N.
MAIN down West 1ST AVE.

Shooting East

T



Street Scape

Co Hon Belt Railroad Depot Corner of N. Main and
West 1st St.

Fordyce Commercial Historic District
Dallas County, AR.

KAY Griffin

10/20/07

A. H. P. P.

Co Hon Belt Railroad Depot corner of N. Main
and W. 1st

T (61)



Street Scape

N. MAIN looking EAST ON EAST 1ST ST.
Fordyce Commercial Historic District
DALLAS County, AR.

KAY Griffin

10/20/07

A. H. P. P.

Street Scape N. MAIN looking EAST ON
East 1ST St. Shooting East

V



Colors Beauty Supply Plus

101 N. MAIN

Fordyce Commercial Historic District

DALLAS County, AR.

KAY Griffin

10/20/07

A. H. P. P.

Shot from S.E. Corner of building
ON N. MAIN St. Shooting North

#35

✓



Street Scape

200 Block of N. MAIN Street With Nutt-Trussell
Bldg in foreground shooting N. on N. MAIN St. From
West side of N. MAIN St.

Fordyce Commercial Historic District
DALLAS County, AR.

KAY Griffin

10/20/07

A. H. P. P.

Street Scape of 200 block of N. MAIN Street
With Nutt-Trussell Bldg in foreground
shooting N. on N. MAIN St. From West
side of N. MAIN St.

W



STREET SCAPE WITH NUTT-
TRUSSELL BLDG. ON N. E. CORNER
OF E. 2ND ST. AND N. MAIN ST
FORDYCE COMMERCIAL HISTORIC DISTRICT
DALLAS COUNTY, AR.

KAY GRIFFIN
10/20/07

A. H. P. P.

STREET SCAPE WITH NUTT-TRUSSELL BLDG.
ON NORTH E. CORNER LOOKING E,
ON 2ND ST. (SHOOTING EAST)

W



Bob's Barber Shop

106 N. MAIN ST.

Fordyce Commercial Historic District

DALLAS COUNTY, AR.

KAY Griffin

10/20/07

A. H. P. P.

Shot of front (East) Facade shooting West
from Center of N. MAIN St.

X



Street Scape

West 100 Block of N. MAIN ST.
Shooting South From EAST 2nd AND
N. MAIN ST.

Fordyce Commercial Historic
District

DALLAS County AR.

KAY Griffin

10/20/07

A. H. P. P.

West 100 block of N. MAIN ST
Street Scape Shooting South
From EAST 2nd AND North MAIN ST.

~~Y~~ Y



Street Scape

300 Block of Main Street
Home Accident Insurance Co. 300-302

N. MAIN St. in foreground

Fordyce Commercial Historic District

Dallas County, AR.

KAY Griffin

10/20/07

A. H. P. P.

Street Scape of 300 block of N. MAIN St
Shooting North from W. side of 2nd
Street with Home Accident

Insurance Co. 300-302 N. MAIN
St. in foreground

Z

BENTON HARDWARE CO.



Benton Hardware Co Bldg.

201 N. Main St.

Fordyce Commercial Historic District

DALLAS County, AR.

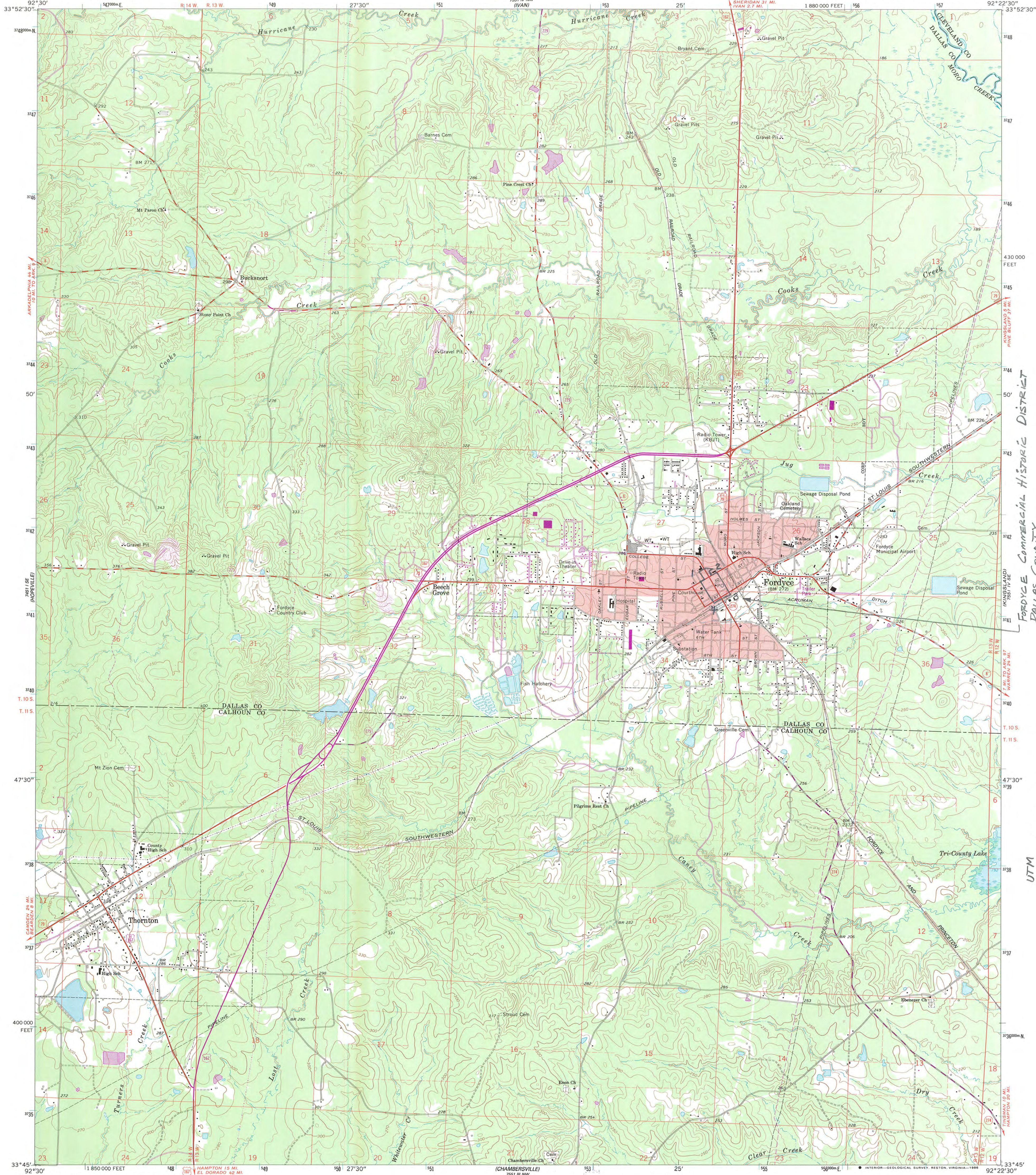
KAY Griffin

10/20/07

A. H. P. P.

Shooting West from center of N. Main
Street the Front (East) Facade

Z



FORDYCE COMMERCIAL HISTORIC DISTRICT
DALLAS COUNTY
FORDYCE, ARKANSAS

UTM
1. 15 554217E
2. 15 554430E
3. 15 554582E
4. 15 554594E
3741503N
3741554N
3741239N
3741122N



The Department of
**Arkansas
Heritage**

Mike Beebe
Governor

Cathie Matthews
Director

Arkansas Arts Council

*

Arkansas Natural Heritage
Commission

*

Delta Cultural Center

*

Historic Arkansas Museum

*

Mosaic Templars
Cultural Center

*

Old State House Museum



Arkansas Historic
Preservation Program

1500 Tower Building
323 Center Street
Little Rock, AR 72201
(501) 324-9880
fax: (501) 324-9184
tdd: (501) 324-9811

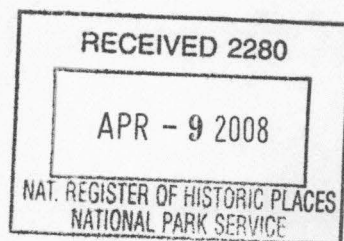
e-mail:

info@arkansaspreservation.org

website:

www.arkansaspreservation.com

An Equal Opportunity Employer



April 3, 2008

Dr. Janet Matthews
Chief of Registration
United States Department of the Interior
National Register of Historic Places
National Park Service
8th Floor
1201 Eye Street, NW
Washington, DC 20005

RE: Fordyce Commercial Historic District – Fordyce, Dallas
County, Arkansas

Dear Dr. Matthews:

We are enclosing for your review the above-referenced nomination. The Arkansas Historic Preservation Program has complied with all applicable nominating procedures and notification requirements in the nomination process.

If you need further information, please call Ralph S. Wilcox of my staff at (501) 324-9787. Thank you for your cooperation in this matter.

Sincerely,

Cathie Matthews
State Historic Preservation Officer

CM:rsw

Enclosure

UNITED STATES DEPARTMENT OF THE INTERIOR
NATIONAL PARK SERVICE

NATIONAL REGISTER OF HISTORIC PLACES
EVALUATION/RETURN SHEET

REQUESTED ACTION: ADDITIONAL DOCUMENTATION

PROPERTY NAME: Fordyce Commercial Historic District

MULTIPLE
NAME:

STATE & COUNTY: ARKANSAS, Dallas

DATE RECEIVED: 12/24/09 DATE OF PENDING LIST:
DATE OF 16TH DAY: DATE OF 45TH DAY: 2/07/10
DATE OF WEEKLY LIST:

REFERENCE NUMBER: 08000436

REASONS FOR REVIEW:

APPEAL: N DATA PROBLEM: N LANDSCAPE: N LESS THAN 50 YEARS: N
OTHER: N PDIL: N PERIOD: N PROGRAM UNAPPROVED: N
REQUEST: N SAMPLE: N SLR DRAFT: N NATIONAL: N

COMMENT WAIVER: N

☒ ACCEPT ☐ RETURN ☐ REJECT 2.3.10 DATE

ABSTRACT/SUMMARY COMMENTS:

Additional Documentation Approved

RECOM./CRITERIA Accept

REVIEWER Edson Beall

DISCIPLINE History

TELEPHONE _____

DATE 2.3.10

DOCUMENTATION see attached comments Y/N see attached SLR Y/N

If a nomination is returned to the nominating authority, the nomination is no longer under consideration by the NPS.

United States Department of the Interior
National Park Service

National Register of Historic Places Continuation Sheet

Section number 5 Page 1

The revised resource count for the Fordyce Commercial Historic District is as follows.

Contributing	Noncontributing	
26	24	buildings
	6 (vacant lots)	sites
		structures
		objects
26	30	Total

In addition, the following buildings within the district are individually listed and are not included in the C/NC counts above:

Cotton Belt Railroad Depot at Main and First streets – Listed on June 11, 1992.

Fordyce Home Accident Insurance Co. at 300 Main Street – Listed on December 22, 1982.

Marathon Oil Service Station at East 2nd and Spring streets – Listed on May 10, 2001.

Nutt-Trussell Building at 202 N. Main – Listed on March 4, 2001.

Tennessee, Alabama & Georgia Railway Steam Locomotive #101 at the northwest corner of North Main Street and the Union Pacific Railroad line – Listed on January 24, 2008.

United States Department of the Interior
National Park Service

National Register of Historic Places Continuation Sheet

Section number 7 Page 1

The purpose of this additional documentation is to update the resource counts of the nomination and to change the Contributing/Non-Contributing status of one building in the district.

- 1) *Building at 204 N. Main Street* (204 N. Main Street, Site #DA0213) – In the original nomination for the Fordyce Commercial Historic District, the building at 204 N. Main Street was considered to be a non-contributing resource. At the time, a front façade of metal, which had been added likely in the 1960s, obscured the original architectural detail of the building. Since the time that the nomination was completed and approved, the metal façade was removed, exposing the stucco façade and window openings. As a result, the building at 204 N. Main Street should be considered contributing.



FORDYCE COMMERCIAL HISTORIC DISTRICT

DALLAS COUNTY, AR

RALPH S. WILCOX

NOVEMBER 2009

ARKANSAS HISTORIC PRESERVATION PROGRAM, LITTLE ROCK, AR

BUILDING AT 204 NORTH MAIN STREET, LOOKING NORTHEAST



The Department of
**Arkansas
Heritage**

Mike Beebe
Governor

Cathie Matthews
Director

Arkansas Arts Council

*

Arkansas Natural Heritage
Commission

*

Delta Cultural Center

*

Historic Arkansas Museum

*

Mosaic Templars
Cultural Center

*

Old State House Museum



Arkansas Historic
Preservation Program

1500 Tower Building
323 Center Street
Little Rock, AR 72201
(501) 324-9880
fax: (501) 324-9184
tdd: (501) 324-9811

e-mail:

info@arkansaspreservation.org

website:

www.arkansaspreservation.org

An Equal Opportunity Employer



December 14, 2009

080004136

Dr. Janet Matthews
Chief of Registration
United States Department of the Interior
National Register of Historic Places
National Park Service
8th Floor
1201 Eye Street, NW
Washington, DC 20005



RE: Fordyce Commercial Historic District Additional
Documentation – Fordyce, Dallas County, Arkansas

Dear Dr. Matthews:

We are enclosing for your review the above-referenced nomination. The Arkansas Historic Preservation Program has complied with all applicable nominating procedures and notification requirements in the nomination process.

If you need further information, please call Ralph S. Wilcox of my staff at (501) 324-9787. Thank you for your cooperation in this matter.

Sincerely,

Cathie Matthews
State Historic Preservation Officer

CM:rsw

Enclosure