



Photo 1

Savenac Nursery, 24 MN 145

Mineral County, Montana



Photo 2

Savencal Nursery, 24 MN 145

Mineral County, Montana



Photo 3

Savienac Nursery, 24 MN 145

Mineral County, Montana



Photo 4

Savencac Nursery, 2417N 145.

Mineral County, Montana



Photo 5

Savenac Nursery, 24 MN 125

Mineral County, Montana



Photo 6

Savenac Nursery, 24 MN 145

Mineral County, Montana

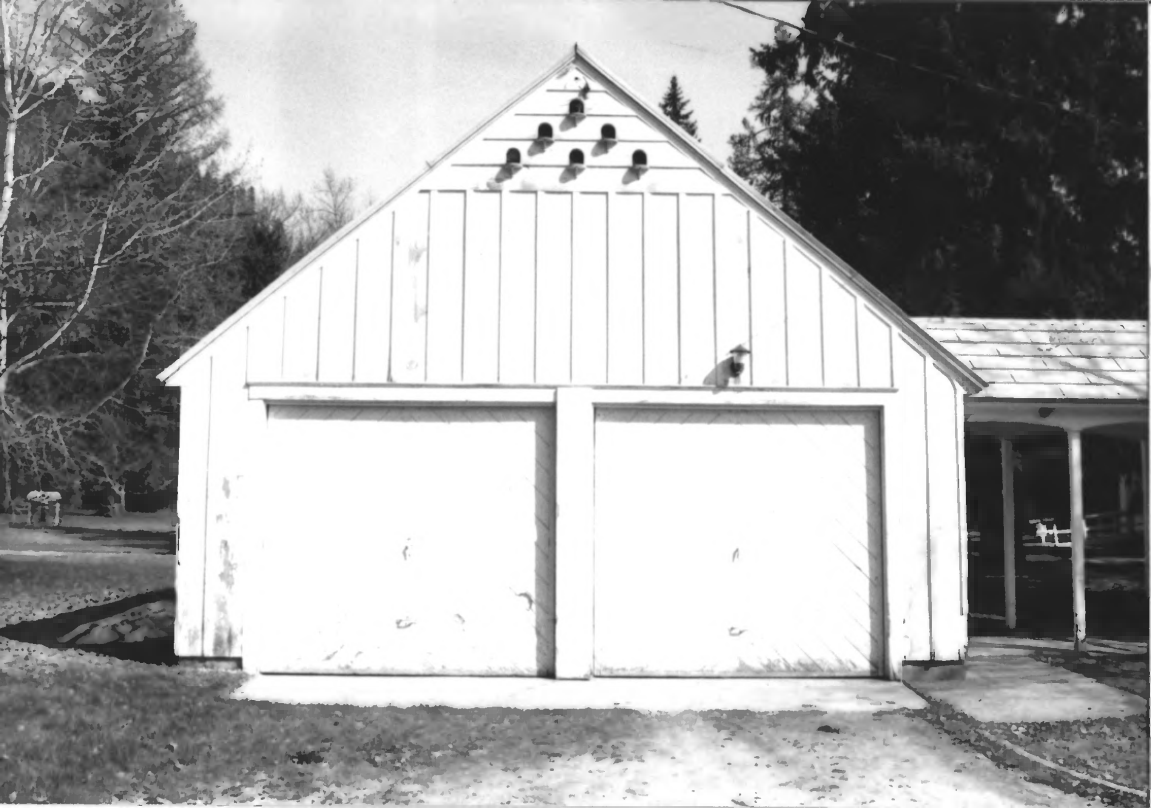


Photo 7

Savrenac Nursery, 24MN145⁰⁰

Mineral County, Montana



Photo 8

Savennac Nursery, 24 MN 145

Mineral County, Montana



Photo 9

Savenac Nursery, 24 MN 145

Mineral County, Montana



Photo 90

Saveneac No. 509, 24711145

Mineral County, Montana



Photo 11. "1

AGFA
MAY 98 105 MNMB

Stavenac Nursery, 2414N 145

Mineral County, Montana



Photo 12

Savennac Nursery, 24 MN 145

Mineral County, Montana



Photo 13

Savennac Nursery, 24 MN 195

Mineral County, Montana



Photo 14

Savennac Nursery, 2477 N 145

Mineral County, Montana



Photo 15

Savennac Nursery, 24 MN 145⁰

Mineral County, Montana



Photo 16

Sauvignac Nursery, 29MN155

Mineral County, Montana



Photo 17

Savenac Nursery, 24 MN 145

Mineral County, Montana



Photo 18

Savienac Nursery, 24 MN 145
Mineral County, Montana



Photo 19

Savannah Nursery, 2477 N 195

Mineral County, Louisiana



Photo 20

Savannah Nursery, 24th ~~NY~~ 75


Mineral County, Montana



Photo 21

Savenac Nursery, 24 MW 1955

Mineral County, Montana



THIS STONE IS IN MEMORY OF THE
SEVENTY-EIGHT FOREST SERVICE
FIRE FIGHTERS WHO VALIANTLY DIED
IN THE GREAT FOREST FIRE OF 1910.

THIS MEMORIAL STONE WAS ERECTED
IN 1941 BY COMPANY 956 CAMP TAFT,
CIVILIAN CONSERVATION CORPS. THE
MEMORIAL WAS DEDICATED IN 1996
BY THE U.S. FOREST SERVICE.

Photo 22

Savennac Nursery, 24th Mt 45

Mineral County, Montana



Photo 23

Savenac Nursery, 24 MN 145

Mineral County, Montana

A black and white photograph of a rustic stone and wood sign for the Savenac Nursery. The sign is supported by a large, rough-hewn stone pillar on the left and a horizontal wooden beam on the right. The text on the sign is arranged vertically. At the top, the word "HISTORIC" is on a small rectangular plaque. Below it, "SAVENAC NURSERY" is written in large, bold, sans-serif letters. Underneath is a small shield-shaped logo with "U.S." inside. The bottom section of the sign reads "U.S. DEPARTMENT OF AGRICULTURE FOREST SERVICE" in smaller, spaced-out letters. The background shows a grassy field, a white fence, and a dense line of trees.

HISTORIC

SAVENAC
NURSERY



U.S. DEPARTMENT
OF
AGRICULTURE
FOREST SERVICE

Photo 24

Savenac Nursery, 24th N 145

Mineral County, Montana



Photo 25

Savenac Nursery, 24 ~~MT~~ 145

Mineral County, Montana



Photo 26

Savenac Nursery, 24 MN 145

Mineral County, Montana



Photo 27.

Savenac Nursery, 24 MW+45

Mineral County, Montana



Photo 2.8

Savenae Nursery, 24th MN 145

Mineral County, Montana



Photo 29

Savenac Nursery, 24 MAY 45

Mineral County, Montana



Photo 30

Savenac Nursery, 24 MN 145

Mineral County, Montana



Photo 31

Sabrenac Nursery, 24 N N 145

Mineral County, Montana



Photo 32

Savenac Nursery, 24 MNT 45

Mineral County, Montana



Photo 33

Savencac Nursery, 24th Nov 1955

Mineral County, Montana



Photo 34

Savennac Nursery, 24 NW 195

Mineral County, Montana



Photo 35

Savencac Nursery, 24MN45

Mineral County, Montana



Photo 36

• Sabienac Nursery, 24 MN 145.

Mineral County, Montana



Photo 37

Sabernac Nursery, 24MN~~145~~

Mineral County, Montana



Photo 38

Savenac Nursery, 24 ~~AA~~ 145

Mineral County, Montana



Photo 39

Savenac Nursery, 24/1/1945

Mineral County, Montana



Photo 40

Savenac Nursery, 2477N 145

Mineral County, Montana



Photo 41

Savennac Nursery, 247 N^o 145

Mineral County, Montana



Photo 42

Savencac Nursery, 2477N145

Mineral County, Montana



Photo 43

Savencac Nursery, 24 NW 145

Mineral County, Montana



Photo 44

Sawyer Reservoir 24/1/51

Mineral County, Montana



Photo 45

Savennac Nursery, 24 MN 145

Mineral County, Montana



Photo 46

Sabenaac Nursery, 24 JAN 1955

Mineral County, Montana



Photo 47

Savannah Nursery 24th Nov 195

Mineral County, Montana

A black and white photograph of a small, white, gabled oil house. The house has horizontal siding and a prominent gable roof. A sign on the side of the house reads "OIL HOUSE" and "NO SMOKING". The house is situated in a wooded area with large evergreen trees in the background. The ground in the foreground is covered with a layer of snow or frost.

OIL HOUSE
NO SMOKING

Photo 48

Saveneac Nursery, 24 ANT/45

Nineval County, Pontana



Photo 49

Savennac Nursery 31/12/45

Mineral County, Montana



Photo 50

Savenac Nursery, 247N145

Lincoln County, Montana



Photo 51

Savenac Nursery, 24 MN 195

Pinckney County, Florida



Photo 52

Sarenac Nursery, 2477 N 145

Alameda County, Montana



Photo 53

Saveriac Nursery, 24 MAY 1955

Lincoln County, Montana



Photo 54

Savannah Nursery, 247 N 145

Mineral County, Montana



Photo 55

Savennac Nursery, 24 MN 45

Mineral County, Montana



Photo 56

Savenac Nursery, 24th N N 145

Mineral County, Montana.



Photo 57

Savennac Nursery, 247 N^W 745

Mineral County, Montana



• Photo 58

Sagehen Nursery, 24 May 1946

Mineral County, Montana



Photo 59

Sadenac Nursery, 24th JAN 1945

Mineral County, Montana



Photo 60

Sablenac Nursery, 2477N 145

Mineral County, Montana



Photo 61

Savennac Nursery, 24th Nov 1955

Mineral County, Montana



Photo 62

Savennac Nursery, 2477N 145

Mineral County, Montana



Photo 63

Savenac Nursery, 24 MN 145

Mineral County, Montana



Photo 64

Savencac Nursery, 2477N¹⁴⁵

Mineral County, Montana



Photo 65

Savencac Nursery, 24 NW 145

Mineral County, Montana



Photo 66

Savencac Nursery, 241/N145

Pineral County, Montana



Photo 67

Savenac Nursery, 24 MN 145

Mineral County, Montana



Photo 68

MAY 98 105 MNMB

Savencac Nursery, 24 MN 195

Mineral County, Montana



Photo 69

Savoy Nursery, 24MN 145

Mineral County, Montana