

United States Department of the Interior
National Park Service

FEB 17

National Register of Historic Places
Registration Form

This form is for use in nominating or requesting determinations for individual properties and districts. See instructions in How to Complete the National Register of Historic Places Registration Form (National Register Bulletin 16A). Complete each item by marking "x" in the appropriate box or by entering the information requested. If any item does not apply to the property being documented, enter "N/A" for "not applicable." For functions, architectural classification, materials, and areas of significance, enter only categories and subcategories from the instructions. Place additional entries and narrative items on continuation sheets (NPS Form 10-900a). Use a typewriter, word processor, or computer, to complete all items.

1. Name of Property

historic name The Bisbee Mill
other names/site number _____

2. Location

street & number 66 East Street _____ not for publication
city or town Chesterfield _____ vicinity _____
state Massachusetts code MA county Hampshire code 015 zip code 01012

3. State/Federal Agency Certification

As the designated authority under the National Historic Preservation Act of 1986, as amended, I hereby certify that this nomination request for determination of eligibility meets the documentation standards for registering properties in the National Register of Historic Places and meets the procedural and professional requirements set forth in 36 CFR Part 60. In my opinion, the property meets does not meet the National Register Criteria. I recommend that this property be considered significant nationally statewide locally. (See continuation sheet for additional comments.)

Betsy Friedberg, National Register Director 2/9/05
Signature of certifying official/Title _____ Date _____

Cara H. Metz, State Historic Preservation Officer
Massachusetts Historical Commission

State or Federal agency and bureau

In my opinion, the property meets does not meet the National Register criteria. (See continuation sheet for additional Comments.)

Signature of certifying official/Title _____ Date _____

State or Federal agency and bureau

4. National Park Service Certification

I, hereby certify that this property is:
 entered in the National Register
 See continuation sheet.
 determined eligible for the National Register
 See continuation sheet.
 determined not eligible for the National Register
 removed from the National Register
 other (explain): _____

Signature of the Keeper

Patrick Andrews

Date of Action

3/31/2005

Bisbee Mill
Name of Property

Hampshire, MA
County and State

5. Classification

Ownership of Property

(Check as many boxes as apply)

(Check only one box)

- private
- public-local
- public-State
- public-Federal

- building(s)
- district
- site
- structure
- object

Number of Resources within Property

(Do not include previously listed resources in the count.)

Contributing	Noncontributing	
<u>2</u>		building
<u>4</u>		sites
<u>3</u>	<u>1</u>	structures
		objects
<u>9</u>	<u>1</u>	Total

Number of contributing resources previously listed in the National Register

0

Name of related multiple property listing
(Enter "N/A" if property is not part of a multiple property listing.)

n/a

6. Function or Use

Historic Functions

(Enter categories from instructions)

AGRICULTURE/processing/grist mill
INDUSTRY/manufacturing facility/woodworking and
blacksmith shop

Current Functions

(Enter categories from instructions)

RECREATION and CULTURE/museum

7. Description

Architectural Classification

(Enter categories from instructions)

MID 19th CENTURY: utilitarian

Materials

(Enter categories from instructions)

foundation stone, concrete

walls wood/weatherboard

roof asphalt shingle

other _____

Narrative Description

(Describe the historic and current condition of the property on one or more continuation sheets.)

United States Department of the Interior
National Park Service

National Register of Historic Places Continuation Sheet

Section number 7 Page 1 **Bisbee Mill**
Chesterfield (Hampshire), MA

NARRATIVE DESCRIPTION

Geographic Setting

The Bisbee Mill is in the rural hill town of Chesterfield, a western Massachusetts town located in the foothills of the Green Mountains. The Westfield River passes through the town in a north-south direction, and the Bisbee Mill is located east of the river on the west side of the Dead Branch-- a tributary that joins the Westfield River just south of the Chesterfield-Huntington town line. The Bisbee Mill is situated in a hamlet of Chesterfield known as Bisbees, southeast of the town center.

Three roads meet in the area; East Street is the main road running in an east-west direction. At its west end, Stage Road forks off in a northwest direction. Toward the east end of the hamlet, East Street is met by Bisbee Road, which runs perpendicular to it. The mill is on the north side of East Street about 1,000 feet west of the intersection with Bisbee Road at 66 East Street. The 2-acre property also includes the following resources associated with the evolution of the mill: a millpond, one canal and a portion of a second feeder canal, a dam site, the ca. 1830 Pierce Corn Mill site, and the ca. 1761 Damon Mill site. Since 1997, the Chesterfield Historical Society has operated the property as a museum.

The surrounding neighborhood, which is potentially eligible for listing in the National Register as a district, includes six houses associated with the Bisbee family and their tenants, all under separate ownership from the mill itself: a lumberyard that includes a 1946 former Bisbee sawmill building; a former Bisbee Brothers Lumber and Hardware Company building (now converted to residential use); a Bisbee family dairy barn; and other mill-related features. Open space in the form of cultivated farmland, woodland, and wetlands surrounds the built environment of the hamlet of Bisbees.

The Dead Branch of the Westfield River flows to the Bisbee Mill from the north and makes an eastward turn behind the mill before turning south again and passing under East Street. On this course, it traverses a low-lying wetland, a former millpond area northeast of the mill building, and

(continued)

United States Department of the Interior
National Park Service

National Register of Historic Places
Continuation Sheet

Section number 7 Page 2 **Bisbee Mill**
Chesterfield (Hampshire), MA

passes the site of a former dam. Branching on the west from the river are the filled-in remains of a canal that carried water from the river to enter the mill on its west side. The mill is south facing and is set into a hillside on its west elevation, providing an on-grade entry on that side to the second level of the three-level building. A headrace located on the berm enters the mill in this area. The first level is fully exposed on the south, east, and most of the north elevations. Grass and wildflowers surround the mill building, and hardwood trees on the west and north shade it. The land slopes down to the east and the river.

Exterior Description

The mill building is a composite of residential-scale forms with an additive appearance. **(Photograph No. 1)** Two end-gabled sections, 2½ stories in height, at two different heights (about a half story in height difference), are joined at their gable ends. [Please note that for consistency, the attic level is referred to as the third level in this narrative description.] These two sections form the main block of the building. The earlier of these sections dates to 1823 and it is 30' x 24'. Between 1855 and 1859 the second section, measuring 28' x 24', was added to it on the east. Both sections are post and beam construction. Foundations of the two sections were originally fieldstone, but those on the east and south were rebuilt with poured concrete in 1995 and the fieldstone foundations on the west were reinforced with concrete in the 1970s.

On the south elevation a full-width, 12' x 58', two-story, shed-roof section (built in two phases in 1888 and 1929) is attached **(Photograph No. 1)**. On the north is a second full-width addition of two stories built into the hill; constructed in 1954, it measures 58' x 12' beneath a shed roof **(Photograph No. 2)**. The north addition has concrete foundations that create a crawl space. The south addition has fieldstone foundations that have been reinforced with concrete. These north and south additions are balloon-frame construction, and exterior walls are clapboard sided on the south, and novelty sided on the north. The main block sections as they are exposed on east and west are clapboard sided. There is an interior brick chimney on the east end of the building that rises without a foundation from the third level. There is a metal vent for a wood stove on the west end. About 1950, a brick chimney on the west end was removed.

Fenestration in the mill building is asymmetrical. Window sash is 6/6 or 6-light fixed. There are roughly nine bays on the south, six on the north, and four to five bays on east and west. **(Photograph Nos. 3 and 4)** On the south, double sliding doors on track open into the first level,

(continued)

United States Department of the Interior
National Park Service

National Register of Historic Places Continuation Sheet

Section number 7 Page 3 **Bisbee Mill**
Chesterfield (Hampshire), MA

and two large sliding doors on track open into the second level. A set of double leaf doors and an overhead door open to the second level on the west (**Photograph No. 3**), and there is a small access door to the crawl space on the north elevation. The north addition also contains a small sliding door on its first-level east end and a hinged door on to the second level. There is a sliding door on the second level of the east elevation above a first-level door. The gable roofs of the center sections of the mill are covered with asphalt shingles, while the shed roofs of the north and south additions are covered with mineral paper under black polyglass.

Interior Description

On the interior, the substantial equipment of three industrial processes and their products, two of them water-powered, are distributed among the three levels, together with the power generating equipment. The processes are those of a gristmill, a woodworking mill, and a blacksmith shop; for power there is a water-driven turbine (not now operable) with shafting, gears and belting that extend through the three stories of the mill's two center sections. (**Photograph Nos. 5, 6 and 7**)

The first level of the mill [ground level on the south] is entered by sliding doors into the 12' x 58' south addition of 1888 and 1929. In the 12-foot-wide space of this addition are a planer, a knife grinder, and an emery stone grindstone – all equipment from the mill's industrial past. In the 1855 section of the first level, a cob grinder elevator rises to the third level through an opening in the intermediate floor. In the 1823 portion of the building is a wheel pit that is fed by an iron penstock that enters the building on the west. The wheel pit is approximately 8' deep and contains a 1919, 50-horsepower McCormick type turbine manufactured by J. & W. Jolly, Inc. of Holyoke (**Photograph No. 5**). There are no remains of the original wheel or tub wheel that occupied the wheel pit. Wood and iron pulleys, shafting and belting are in place above the turbine (**Photograph No. 7**). Wooden stairs at the east end of the 1823 section lead to the second level. (**Photograph No. 8**)

The second level is an unpartitioned space that at its west end contains whip butt-making machines, a ca. 1920 rip saw, and displays of old tools from the mill's woodworking shop. (**Photograph No. 9**) There is a ca. 1835 glass-sided, horse-drawn hearse on display. (**Photograph No.10**) Mid-way on the second level is the gristmill equipment that extends from the first through third levels passing through an opening in the floor. (**Photograph No. 11**) Two large grinding

(continued)

United States Department of the Interior
National Park Service

National Register of Historic Places Continuation Sheet

Section number 7 Page 4 **Bisbee Mill**
Chesterfield (Hampshire), MA

stones are located at floor level in the 1855 half of the building. Stairs rise to the third level. **(Photograph No. 8)** There are a few remnants of the corn mill's pre-1820 plaster walls on this level.

The third level occurs only in the two earliest sections of the building, and the extent of each building is clearly bounded by a center, clapboard-trimmed wall that was the east end of the original 1823 mill building. On the west side of the wall in the 1823 section is the woodworking shop and the painting shop. **(Photograph Nos. 12 and 13)** There are in this section a 14' wood-framed lathe, a wood-framed jigsaw, and an 8-foot pinion machine for inserting spokes into wagon or buggy wheels. On the westernmost wall is a woodworking bench about 10' long. The equipment is all powered by the belts that remain as they were when driven by the vertical turbine in the wheel pit.

On the south side of this room is a paint mixing area with a bench and storage compartments where wagon paints were prepared, an old belt storage closet, and an upright tool closet. A wood stove that heated this room is located on its west end, and the room is lit by two fixed, 6 light windows in the gable end. Wood is stored on the tie beams of the roof framing system and acts as a partial ceiling to the room. Unlike most buildings of the early 19th century in western Massachusetts that used a common rafter system, the framing in the 1823 section is purlin roof with four pairs of principal rafters and a ridgepole. There are two fixed, six-light windows in the gable of the attic of this section.

In the 1855 section at the third level is the blacksmith shop. **(Photograph No. 14)** There is the chimney forge, an anvil, a lathe, and the upper end of the cob grinder elevator. Benches and a table at north and south sides of this room contain blacksmithing tools and iron pieces forged here in the past. Two windows in the gable end light the room. This section of the building has a roof of four pairs of principal rafters connected to a ridgepole.

Archaeological Description

While no ancient Native American sites are present on the mill property or in the general area (within one mile), sites may be present. Environmental characteristics of the property represent several locational criteria (slope, drainage, and distance to wetlands) that are favorable indicators for many types of prehistoric sites. The mill is located on a well drained, level to moderately

(continued)

United States Department of the Interior
National Park Service

National Register of Historic Places Continuation Sheet

Section number 7 Page 5 **Bisbee Mill
Chesterfield (Hampshire), MA**

sloping terrace of the Dead Branch River, a tributary of the Westfield and Connecticut rivers. The Dead Branch River is located immediately east of the Bisbee Mill and roughly bisects the property. Given the above information, known Native American settlement patterns in the Connecticut Valley uplands, the size of the property (2 acres), and issues of integrity associated with the construction and demolition of at least 3 mills, 2 millponds, 2 dams and numerous power canals, a moderate potential exists for locating significant ancient Native American resources on the mill property.

Historic archaeological resources have been identified on the Bisbee Mill property and a high potential exists for locating a wide variety of additional resource types. Analysis of documentary sources combined with mapping of environmental resources and mills enable us with reasonable certainty to locate the sites of the Damon sawmill (1761) and Pierce corn mill on the nominated property. Deed research indicates the nominated parcel encompasses the land near the river included in the 1820 and 1823 land purchases by Elisha Bisbee. The 1820 purchase included the sites of the Damon sawmill (1761) on the west side of the Dead Branch river and the Pierce Corn mill on the east side of the river. The second parcel purchased by Elisha Bisbee was located on the west side of the river including the site of the 1823 Bisbee Mill, placing it south of the land included in the 1820 purchase. Deed information places the Damon Mill north of the Bisbee Mill. Since waterpower was required for the Damon Mill to function, it is reasonable to assume the Damon Mill was in close proximity to the Dead Branch river. Sometime between 1823 and 1835, the Pierce Corn mill was moved from its original site (ca.1761) on the east side of the river to a site north of the Bisbee Mill (1823). The information presented above places the Bisbee Mill, Pierce Gristmill, and Damon Sawmill all on the west side of the Dead Branch river between East Street and wetlands some 250 feet to the north. All three mills were presumably within a 250 foot linear corridor beginning with the Bisbee mill north to the Pierce Gristmill then Damon Mill. The information presented above is given additional validity by the recollections of Charles Bisbee, now deceased, who reported evidence of a structure and partial tunnel/raceway two rods (33 feet) north of the 1823 Bisbee Mill. The evidence of Mr. Bisbee, which cannot be documented at the present time, would have referred to the Pierce Gristmill, the only structure reported in that area.

The original site of the Pierce Corn Mill (ca.1761) is also believed to be located within the boundaries of this nomination; however, sufficient evidence is not yet present to corroborate that location. The Pierce Corn Mill site is believed to lie on the east bank of the Dead Branch River opposite the site of the Damon Mill. Each of the mill sites included in this nomination may

(continued)

United States Department of the Interior
National Park Service

**National Register of Historic Places
Continuation Sheet**

Section number 7 Page 6 **Bisbee Mill
Chesterfield (Hampshire), MA**

include structural evidence of the mills and occupational-related features (trash pits, privies, wells) associated with mill production and occupancy by mill workers. Mill structures may include integral parts of related waterpower systems including power canals, wheel pits, and canal gates or penstocks.

Archaeological resources related to waterpower systems may represent the most common and complicated resources on the Bisbee Mill property. Documented waterpower-related resources outside the Bisbee Mill include a small portion of the head-race that conducts water to the west side of the Bisbee Mill, remnants of the 1859 millpond and dam site, and a small portion of the ca.1859 canal that delivered water to the 1859 mill pond from the large pond east of the Dead Branch River. Numerous other waterpower-related resources can be documented and expected; however, their locations are uncertain and must be considered potential resources.

The first millpond on the property was built in 1823 by Elisha Bisbee, who built a millpond and dam north of the mill in the vicinity of wetlands approximately 250 feet north of East Street. A dam site may exist east of this area, possibly at the point where the river bends to the east. The second millpond, constructed in 1859, extended north from the 1859 dam site, along the course of the river to an unknown point in wetlands north and east of the Damon Mill site. The limits of millponds may be a function of dam heights and natural topography; however man-made structures such as berms or dikes may also be included. Stratigraphic evidence may exist of the latter structures. Dam sites may include log and stone structures, stratigraphic evidence in mounded-up areas, and gate structures. Physical evidence of the 1823 dam was not observed. The 1859 dam has also been washed out; however, its precise location can be identified on tax assessors' maps.

Mill canals may represent the most common historic archaeological resource on the Bisbee Mill property, creating a literal maze of buried archaeological features between the various mills, river and millponds. A millpond was not present until ca.1823, indicating headraces conducted water directly from the river to both the Damon Sawmill and Pierce Corn mill. Additional structures may have been located at the river to deflect water from the river to the headrace. A tailrace likely carried water from the mill back to the river. The Damon Mill remained independent of the waterpower system of all other mills on the property through its closure in 1847. The Pierce Corn Mill was moved to the west side of the river and incorporated into the waterpower system for the Bisbee Mill shortly after construction of the latter mill in ca.1823. Documentary research

(continued)

United States Department of the Interior
National Park Service

**National Register of Historic Places
Continuation Sheet**

Section number 7 Page 7 **Bisbee Mill
Chesterfield (Hampshire), MA**

combined with archaeological survey and testing can be used to document the form of the Damon and Pierce Mill buildings and the waterpower systems used at each enterprise. Similar research can identify the method or water-wheel type used to transfer power from the water source to machinery. Important structural evidence may exist from the canals and wheel pits that may survive beyond the mill sites.

Construction of the 1823 millpond, dam, and Bisbee Mill initiated construction of one of the longer headrace canals on the property. The exact course of this canal is not known; however, it extended from the millpond south past the Damon and Pierce mills to the Bisbee Mill. Portions of that canal may have followed the berm and existing canal that presently enters the west side of the Bisbee Mill. At least part of the headrace for the Bisbee Mill was modified in ca. 1859 when the new millpond and dam were constructed, possibly eliminating the northernmost portion of the canal or necessitating an entirely new canal. Structural evidence of penstocks or gates may also survive from the 1823-1835 period after the Pierce Corn Mill was moved and a method was needed to control the flow of water to the Bisbee and Pierce mills. Documentary study combined with archaeological survey and testing can locate the position of the penstocks at the mills, millpond, or headrace.

Tailrace canals were also needed for the Pierce and Bisbee Mills to return water to the Dead River. Documentary research combined with archaeological survey and testing can locate the routes of these canals and their relationship to water entering and exiting the other mill. Historical and archaeological research can also determine modifications needed for tailrace canals after construction of the new millpond and dam in 1859. Archaeological evidence of power canals may include stratigraphic evidence of the canal trench and stone and/or wooden structures used as retaining walls and gates.

Occupational-related features (trash pits, privies, wells) represent another archaeological resource that may exist with each mill site and existing mill structure on the property. Refuse areas may exist associated with the manufacturing process and occupation of the mills by mill workers and possibly their families. Refuse areas and privies may include evidence of the manufacturing process, including objects that were produced, raw materials, and the equipment used in production. Archaeological evidence relating to the working/living conditions of the workers at mills may also exist.

(end)

Bisbee Mill
Name of Property

Hampshire, MA
County and State

8. Statement of Significance

Applicable National Register Criteria

(Mark "x" in one or more boxes for the criteria qualifying the property for National Register listing.)

- A** Property is associated with events that have made a significant contribution to the broad patterns of our history.
- B** Property is associated with the lives of persons significant in our past.
- C** Property embodies the distinctive characteristics of a type, period, or method of construction or represents the work of a master, or possesses high artistic values, or represents a significant and distinguishable entity whose components lack individual distinction.
- D** Property has yielded, or is likely to yield, information important in prehistory or history.

Criteria Considerations

(Mark "x" in all the boxes that apply.)

Property is:

- A** owned by religious institution or used for religious purposes.
- B** removed from its original location.
- C** a birthplace or grave.
- D** a cemetery.
- E** a reconstructed building, object, or structure.
- F** a commemorative property.
- G** less than 50 years of age or achieved significance within the past 50 years.

Narrative Statement of Significance

(Explain the significance of the property on one or more continuation sheets.)

9. Major Bibliographical References

(Cite the books, articles, and other sources used in preparing this form on one or more continuation sheets.)

Previous documentation on file (NPS):

- preliminary determination of individual listing (36 CFR 67) has been requested
- previously listed in the National Register
- previously determined eligible by the National Register
- designated a National Historic Landmark
- recorded by Historic American Buildings Survey # _____
- recorded by Historic American Engineering Record # _____

Areas of Significance

(Enter categories from instructions)

- Agriculture
- Architecture
- _____
- _____
- _____
- _____
- _____

Period of Significance

1823-1955

Significant Dates

Significant Person

(Complete if Criterion B is marked above)

Cultural Affiliation

Architect/Builder

Primary location of additional data:

- State Historic Preservation Office
- Other State agency
- Federal agency
- Local government
- University
- Other

Name of repository:

Chesterfield Historical Society

United States Department of the Interior
National Park Service

National Register of Historic Places Continuation Sheet

Section number 8 Page 1 **Bisbee Mill**
Chesterfield (Hampshire), MA

Statement of Significance

The Bisbee Mill, Chesterfield, Massachusetts, is significant under National Register Criterion A as a singularly intact example of an early 19th century multiple-purpose mill that served the town of Chesterfield and the surrounding area. From 1823 through the 1960s, the mill was in the ownership of five generations of the Bisbee family. It is a fine representative example of rural, water-powered light industry that contributed directly to agriculture through its gristmill and contributed to the community as a whole through its woodworking shop, providing wagons, wheels, lumber, caskets and tool handles, and through its blacksmith shop forging tools and parts for area residents. The Bisbee Mill is significant under National Register Criterion C for the evolution of its architecture over time to serve several water-powered, light-industrial operations. It is one of New England's few extant mill buildings that so fully illustrates, by virtue of remaining equipment and machinery, the 19th century's practice of combining critical functions in one building, in this case those of gristmill, blacksmith shop, wagon building shop, and waterpower generation.

The building retains integrity of location, design, materials, workmanship, feeling, and association, and is significant at the local level. While it is being nominated individually to the National Register of Historic Places, it could subsequently be included in a National Register District for the hamlet known as Bisbees (see section 7). Since 1997, the Chesterfield Historical Society has operated the Bisbee Mill as a museum.

Colonial Period (1750-1776)

The first member of the Bisbee family to arrive in Chesterfield was Gideon Bisbee, who came to Chesterfield from Pembroke, Massachusetts, in the spring of 1755 and stayed through the summer to begin clearing land for his family's eventual settlement and farming. As was often the custom, Gideon Bisbee returned to Pembroke for the fall and winter. Records indicate that Bisbee joined in the French and Indian Wars, and then died of smallpox before his Chesterfield homestead—in the eastern section of town at an unknown site—was established. His widow Rebecca and four of their six children moved to the cleared land when Chesterfield was open to settlement in 1760.

Between 1760 and 1775, Chesterfield was rather steadily settled by people from southeastern

(continued)

United States Department of the Interior
National Park Service

National Register of Historic Places
Continuation Sheet

Section number 8 Page 2

Bisbee Mill
Chesterfield (Hampshire), MA

Massachusetts from Pembroke, Scituate, and Hingham, and came to be known for a while as "New Hingham." Fifteen years of population growth required lumber for building, and in 1761 Lieutenant Robert Damon built a sawmill on the west bank of the Dead Branch of the Westfield River in what was to become the hamlet of Bisbees. The precise location of the Damon Mill has not been determined, but its general location to the north of the Bisbee Mill is included in this nomination as the site of the Damon mill. The wetlands in the area of the ca. 1823 millpond lie north of the Bisbee Mill. In that relatively small area between the Bisbee mill and the wetlands, the Damon Mill was built ca. 1761 and the Pierce Corn Mill moved between the Damon and Bisbee mills in about 1830. Damon sold the sawmill shortly after 1761 to a Benjamin Pierce, who built a corn mill on the east bank of the Dead Branch. (See sketch map showing the evolution of the various mills. The Pierce mill was moved twice, as will be discussed below.)

Federal Period (1776-1830)

The vast majority of Chesterfield's residents during the Federal period were farmers, but many of them divided their time between farming and a secondary occupation. A few worked solely in light industrial occupations. Town records indicate that the Federal period generated two cloth-dressing mills, two tanneries, a cotton textile mill, and eight to ten saw and turning mills. It was during this period, too, that the dispersed settlement pattern that had characterized the Colonial period shifted and three centers developed – two as a result of the light industry. The first was the town's church and government center at the intersection of Route 143 with North and South Streets; the second was a mill village in western Chesterfield; and the third was the mill village of Bisbees in east Chesterfield on the Dead Branch of the Westfield River.

In 1820 Elisha Bisbee (1783-1860), Rebecca and Gideon Bisbee's grandson, bought the site on the Dead Branch that contained Damon's sawmill and Pierce's corn mill, thereby establishing the first Bisbee presence in this part of Chesterfield. Elisha Bisbee was a millwright and this was his second sawmill, the first having been built about 1810 on Stevens Brook in Chesterfield. According to deed research conducted by Elisha's descendant Charles Bisbee, Elisha bought an additional adjacent parcel in 1823 on the west side of the Dead Branch where he built the sawmill/woodworking shop that now forms the 1823 half of Bisbees mill at 66 East Street. [*n.b.* The map of 1830 places the gristmill on the west and the sawmill on the east side of the Dead Branch. That discrepancy is unresolved. The deed, however, describes the new parcel as being "a

(continued)

United States Department of the Interior
National Park Service

National Register of Historic Places
Continuation Sheet

Section number 8 Page 3 **Bisbee Mill**
Chesterfield (Hampshire), MA

little west of the said Bisbee's new mill...," strongly suggesting a west-side location for the sawmill.] The land and mills described in the two land purchases are believed to be included within the boundaries of the nominated parcel, north of the present Bisbee Mill.

Elisha Bisbee had established both his business and a family by 1830. In 1806 he and Lydia Geer had married, and in 1830 the federal census records that the two had a rather large household of ten children to support with income from their mills.

The Dead Branch was, as its name suggests, not a large river, and the head at the site was not of adequate height to operate a waterwheel year round without water impoundment. Consequently, Bisbee also in 1823 constructed a dam and created a millpond north of the mill, directing the water from the pond to the mill via a canal. The area of the original millpond may still be identified, but the pond, dam, and canal no longer exist. In an effort, perhaps, to consolidate his operations and maximize the waterpower, Elisha Bisbee is believed to have moved the ca. 1761 Pierce corn mill to the west side of the river between 1823 and 1835, thereby placing three mills on the west side. At approximately the same time, he made separate penstocks from the canal carrying water to the woodworking shop and the corn mill buildings. According to Charles Bisbee, there is evidence of a structure and a partial tunnel/raceway two rods north (33 feet) of the 1823 shop building. Charles Bisbee is now deceased and the structure and partial tunnel/raceway could not be observed.

Bisbee operated his 1823 mill and the Pierce corn mill in this arrangement until about 1835. The family sold the Damon sawmill to Elisha and Daniel Baker, who owned it from 1841 to 1844. The Damon Mill was not part of the water system during that time period. The Bisbees bought the Damon sawmill back in 1844.

Deeds mention that during the ownership of Elisha Bisbee, he manufactured broom handles in his saw and turning mill. From family and local history, we know that Elisha Bisbee sold these products to farmers in Hadley, who were among the largest growers of broomcorn in the region. During the winters these farmers, their families, and skilled French-Canadian laborers manufactured brooms using Bisbee handles that were delivered to Hadley by horse-drawn sleds in the winter.

(continued)

United States Department of the Interior
National Park Service

National Register of Historic Places Continuation Sheet

Section number 8 Page 4 **Bisbee Mill
Chesterfield (Hampshire), MA**

Early Industrial Period (1830-1870)

During the Early Industrial Period, Lydia and Elisha were active in the Chesterfield community as well as in the Bisbees' industry. They were among the founders of Chesterfield's Methodist Church in 1843.

In 1835, their sons Osman and Orin Bisbee took over operation of the woodworking shop while Elisha continued to operate the corn mill. Rather than millwrights, the two brothers identified themselves in deeds as wheelwrights and one as a carpenter, reflecting the fact that they took over and upgraded their father's wood-turning shop. The distribution of water between the two mills was explicitly divided in their deed to the shop. The corn mill (by 1835 identified as a gristmill) had first priority, and when water levels were too low for both mills to operate simultaneously, a gate at the wood-turning shop shut off its water supply.

Elisha lived until 1860, and from 1850 to 1859 three generations of the family were involved in and actively diversified the business. Elisha continued running the gristmill, Orin and Osman ran and expanded the woodworking business, and Orin's son Horatio joined them. There was room for three generations as Orin and Osman added wagon-associated tasks to their woodworking shop, making wagon jacks to lift and change wagon wheels, and they also set up a wagon painting shop (now the ell to the house at 58 East Road). From the 1850s, the Bisbees also started producing whip butts—the butt end of whips that were principally made for the numerous whip companies of Westfield, Massachusetts. This activity provided employment for a dozen or more men who were needed to cut the logs and prepare the lumber as well as operate the woodworking shop.

The Bisbees produced broom handles for a few more years, then added saw and plane handles between 1840 and 1860, along with coffins and pine boxes to encase coffins, wagons, carts, buggies, and wagon wheels that they produced between 1835 and 1880. They turned space in their woodworking mill into a blacksmith shop, adding that process between 1854 and 1858. Then ca. 1859, Osman withdrew from the business and turned exclusively to farming.

Horatio, son of Orin and Sophia Bisbee, who became a part of the family business before Osman left, had married in 1858 and one of his early jobs was remodeling the paint shop into a house for his wife and himself, now the ell to 58 East Street, the Louise and Horatio Bisbee House, ca. 1790 and 1865 (MHC #64). The paint part of the operation was then set up on the third level of the woodworking shop, where it remains.

(continued)

United States Department of the Interior
National Park Service

National Register of Historic Places
Continuation Sheet

Section number 8 Page 5 **Bisbee Mill**
Chesterfield (Hampshire), MA

The diversified operations at the mill required more space and more power, so ca. 1855, the Pierce gristmill was moved and at least a portion of it was attached to the east end of the woodworking shop so that it became part of the Bisbee Mill. At the same time, the Bisbees constructed a new sawmill (now gone) on the east side of the Dead Branch directly opposite the Bisbee mill. The ca. 1855 sawmill site is believed to be located outside the boundaries of the nominated property. It is believed that some of the timbers in the new sawmill came from the original Damon mill, which was taken down at that time. To improve the supply of water and power, in 1859 Orin and Horatio created the current millpond (east of the original pond) by damming the river, and, to its east, created the canal needed to carry water to it. Portions of the feeder canal can be observed along the eastern boundary of the nominated area north of the river and the 1859 dam site.

Orin Bisbee had married Wealthy Damon in 1830 and his brother Osman had married Sophia Damon. Although Osman withdrew from the Bisbee mill business, he maintained his connection with the hamlet of Bisbees. In the census of 1870, Osman listed himself as a farmer, sixty years of age. Sophia was fifty-seven and they had two sons living with them, Rockwell, twenty four years of age, who was a farm laborer, and Isaac, age eighteen, also a farm laborer. The third son, John, did not go into farming with his father and brothers, but left home to work at the Bisbee mill. John Elliot Bisbee, born in 1843, served as a young man in the Civil War. When he returned from the war, he married Eliza Ann Weeks in 1869, worked in the Bisbee mill, and farmed on the side. He died in 1888 when he was forty-five years old.

Prior to 1870, Almarin Bisbee, Horatio's brother and a Chesterfield farmer, was appointed town undertaker by the Chesterfield board of health. Orin and Horatio owned horses and the town owned a hearse, and from these slight beginnings, Almarin Bisbee developed a significant funeral home business. When a death occurred in town, a casket was made in the Bisbee woodworking shop, Almarin prepared the body, and the Bisbees' horses drew it in the town-owned hearse for burial. The hearse was even kept in a Bisbee building that was moved to become the middle stall of a three-car garage for the house at 64 East Street. (One of the hearses used by Almarin is among the collections on exhibit in the Bisbee Mill.) The Bisbee funeral home arrangement with the town hearse continued until about 1922.

Late Industrial Period (1870-1915)

Meanwhile, the mill business continued in the family with third-generation Horatio taking over

(continued)

United States Department of the Interior
National Park Service

National Register of Historic Places Continuation Sheet

Section number 8 Page 6 **Bisbee Mill**
Chesterfield (Hampshire), MA

more ownership. Orin in 1868 deeded half of his business to his son Horatio; when Orin died in 1887, Horatio bought the remainder of the business from the family and expanded the mill by adding a 12-foot-wide section to the south side of the building. Between 1888 and 1919, Horatio ran both the mill operations and a dairy farm. He continued to manufacture whip butts mainly for Westfield's ("Whip City") whip factories and took them by horse and wagon to the Williamsburg train station, from which they were then shipped to Westfield. His gristmill operations grew as fewer farmers had their own mills and thus came to rely more on the Bisbee gristmill. He also stocked commercially ground grain that had nutritional supplements added to it. In 1890 the Bisbees expanded this business at the railroad in Williamsburg, adding a commercial grain sales operation there. Between 1888 and 1890, Horatio constructed a small building at 65 East Street (opposite the Bisbee mill) where grain and lumber were sold. This utilitarian building was later expanded to become the offices, store, and warehouse for the Bisbee Brothers' lumber and hardware business.

In 1900 a post office was established in Bisbees. Horatio was the first postmaster, serving from 1900 to 1913. He was active in town affairs beyond service as postmaster, as were others of the family during this period. In 1897 Horatio was elected State Representative. His son Charles was Chesterfield's tax collector from 1895 to 1897, selectman from 1903 to 1921, and county commissioner from 1937 to 1941.

Early Modern Period (1915-1940)

In 1917 Horatio brought electricity to the village of Bisbees in the form of an electricity-generating system for 32-volt service to his house, barn, and the mill building. The generator was located in a small powerhouse in a low, attached shed in front of the center section of his barns at 63 East St., outside the boundaries of the nominated property. The shed/powerhouse remains today, although the equipment may not be intact. In 1919 Charles A. Bisbee, Sr. and Homer R. Bisbee, sons of Horatio, inherited the property and formed Bisbee Brothers. One of their first improvements was to install a Jolly vertical turbine in the mill and one in the 1859 sawmill on the east side of the river. From these two sites, they continued making whip butts and shipped them in trucks to Westfield from about 1918. The whip butt business began to decline ca.1928, but even as it did, Bisbee Brothers was expanding into other items. They constructed whip boxes, for instance, for the Westfield companies to ship their products, and they made wooden tool handles for farm

(continued)

United States Department of the Interior
National Park Service

National Register of Historic Places Continuation Sheet

Section number 8 Page 7 **Bisbee Mill**
Chesterfield (Hampshire), MA

implements, including handles for wheelbarrows, for walking horse plows, and sower boxes. The Hampshire Implement Company in Hatfield and the Rugg Manufacturing Company in Greenfield were the biggest clients for these items, buying steadily into the early 1930s. To accommodate the changes in production, in 1929 a second 12-foot-wide addition was made to the south side of the mill building.

The gristmill operation at the Bisbee Mill closed down, however, in 1929 in large part as a result of so much of its business shifting to Williamsburg and farmers' preference for using commercial grains. Rather than grinding grain, the Bisbee brothers sold commercial grain and their lumber from the store across the street until ca. 1940. With the Depression, most of the woodworking production declined sharply. The woodworking shop remained open, making smaller quantities of whip butts, javelin sticks, tennis racket throats, and dowels for rake handles.

Modern Period (1940-present)

In 1940 the Bisbee brothers Charles and Homer stopped making these products and concentrated on producing lumber, including novelty siding, moldings, and simple planed lumber in the 1859 sawmill on the east side of the river. The 1859 sawmill burned down in 1946 and a new one was built on its foundations (68 East Street, now Berkshire Hardwoods, Inc.). In their store across the street, they introduced hardware sales to their lumber sales. The building was sold after 1991 to new owners.

In 1954 the north addition was put on the Bisbee mill building. **(Photograph No. 2)** In 1966, all woodworking operations in the building ceased, and it was changed into a lumber warehouse until the business of Bisbee Brothers came to a close in 1991. Most of the old machinery and tools were and still are in the building as part of the historical items now on display.

Preservation Efforts

In 1995 the Bisbee Mill was sold to the Chesterfield Historical Society for \$1. The Society turned it into a museum that opened in 1997. Between August 1999 and July 2000, craftsmen studied the physical condition of the building, reconstructed its mechanical history, and restored the gristmill to operating condition by using a secondary motor rather than the turbine. Artifacts of the mill's

(continued)

United States Department of the Interior
National Park Service

National Register of Historic Places
Continuation Sheet

Section number 8 Page 8 **Bisbee Mill**
Chesterfield (Hampshire), MA

production history were identified and catalogued. As a gristmill museum, the property is in active use, which supports its preservation. Schools, neighboring historical societies, and a state meeting for high school teachers on Agriculture in the Classroom have visited. Open on Sundays during the summer months for demonstrations, and for special events during the rest of the year, the museum has had more than 3,600 visitors in the past five years.

The mill museum is highly valued within its community, but on-going financial support for maintenance and staffing will be critical to its long-term preservation.

Archaeological Significance

Since patterns of ancient Native American settlement and subsistence in Chesterfield are poorly understood, any surviving sites could be significant. Ancient sites in this area can be important by contributing information that increases our understanding of Native American adaptations to temperate forest riverine environments in non-coastal areas. Sites in this area can provide important details on the importance of settlement and subsistence in the vicinity of upland tributaries such as the Dead Branch River and their relationship to site distributions and subsistence activities along the main course of the Connecticut River and its primary tributaries including the Westfield River. Native sites in this area may represent a specialized adaptation to upland environments or they may be part of an overall riverine adaptation based in the Connecticut River Valley. Native sites in this area may also contain important information that helps document associations within tool assemblages and cultural sequences in the local area and region. Information may also be present from sites in the area to help analyze patterns of Native American exchange in the region. One interpretation for the region identifies the Connecticut River as an important north-south corridor for transportation and exchange. Secondary drainages of the Connecticut River such as the Westfield River and its tributaries such as the Dead River are hypothesized to have served as east-west corridors enabling wider movement of people and goods. Ancient Native American sites in the district locale may contain information that helps test these models and/or offer alternative hypotheses.

Historic archaeological resources described above may contribute important information that documents the complex history of mill buildings and functions that existed on the Bisbee Mill

(continued)

United States Department of the Interior
National Park Service

National Register of Historic Places
Continuation Sheet

Section number 8 Page 9 **Bisbee Mill**
Chesterfield (Hampshire), MA

property for over three centuries. The value of the various mill sites and properties are further enhanced through the continuity of the Bisbee Mill ownership by five generations of the Bisbee family from 1823 through the 1960s. In addition, the integrity of the known and potential resources on the nominated property is supported by the lack of further development in the area after filling, abandonment, demolition, or moving of the historic resources documented in the area.

Additional documentary research combined with archaeological survey, testing, and careful mapping can help document the precise locations for each mill, the types of archaeological features associated with individual mill sites and a comprehensive internal configuration of all mills and resources at the Bisbee Mill property. Since every mill had waterpower and below-grade levels, the integrity of mill sites should be high as a result of filling after the various mills closed. Fill deposits may include important debris from other nearby mills and/or trash deposits from activities conducted at other mills on the property. Using the 1823 Bisbee Mill, river and wetlands to the north as reference points, known historical sources and informants establish the location of the ca. 1830 Pierce Cornmill and ca. 1761 Damon Sawmill with a reasonable degree of accuracy. Charles Bisbee's recollections of a structure and partial tunnel/raceway two rods (33 feet) north of the 1823 Bisbee Mill may also represent visual documentation of the ca. 1830 Pierce Cornmill site. The original 18th century site of the Pierce Cornmill on the east side of the Dead Branch River is not as well defined and would require more historical and archaeological research to establish its location.

Historical and archaeological information associated with each mill may help identify the type and extent of structures that survive, their integrity, and potential to contribute to various research topics that could be important to this nomination. Any information that would help reconstruct the architectural characteristics, power system, and manufacturing process at each mill would be of major importance. Little information is currently available for each mill beyond general locational factors and function. Structural evidence, archaeological features, and artifacts may help document the size, form, materials, and techniques used in the construction of each mill. Similar evidence might also document the location and type of power system (water wheel) used to transfer power from water to the mill machinery. Detailed analysis of the contents of occupational related features (trash pits, privies, wells) may also contribute important information relating to technologies in use at each mill, raw materials used in production, and the products produced. The contents of occupational related features may also contribute important social, cultural, and

(continued)

United States Department of the Interior
National Park Service

**National Register of Historic Places
Continuation Sheet**

Section number 8 Page 10 **Bisbee Mill
Chesterfield (Hampshire), MA**

economic information related to the workers and owners of each mill. Occupational related features may contain information that indicates the overall living and working conditions at each mill, and whether mill occupancy was limited to working hours or more permanent residence.

Power systems including their construction, technology, and distribution may represent one of the more important and practical research areas at the Bisbee Mill property. Documentary research combined with archaeological survey and testing may identify the method used to harness waterpower at the ca. 1761 Damon Saw Mill and Pierce Cornmill sites. Both mills existed prior to the construction of the first millpond and dam in 1823. Both mills were either built directly on the shoreline of the river where a water flow was present, or were located more inland where water was delivered to the mills via a headrace and returned to the river through a tailrace. Both mills were physically separate from water power structures associated with the Bisbee Mill and ca. 1830 Pierce Cornmill site. Documentary evidence exists indicating the Damon mill was never incorporated into water power systems on the west side of the river and the original site of the Pierce Cornmill was on the east side of the river, physically separate from the mills on the west side. The Pierce Cornmill was moved to the west side of the river shortly after the 1823 millpond was created. Structural remains including log or stone construction may survive from power canals and gates associated with the Damon and 18th century Pierce mill sites.

Beginning in 1823, a dam and millpond were constructed along the Dead Branch River and wetlands north of the Bisbee Mill and Damon mill site. In 1859, a second millpond was constructed east of the original pond with a dam located where the Dead Branch meets the eastern boundary of the nominated area. The 1823 dam and mill pond no longer survive. The 1859 dam has also "washed out" and only the portion of the millpond along the route of the river survives. Documentary research and archaeological testing may identify the location of the 1823 dam and structural remains associated with the 1823 and 1859 dams. Archaeological remains from the dams may include stratigraphic evidence of earthen mound structures possibly incorporating masonry and timber components. Careful research of the local topography may also identify berm or dike type structures used to confine the limits of the millponds.

Beginning in 1823, a headrace connected the Bisbee Mill with the millpond located to the north. Documentary evidence combined with archaeological survey, testing, and mapping may identify

(continued)

United States Department of the Interior
National Park Service

National Register of Historic Places Continuation Sheet

Section number 8

Page 11

Bisbee Mill
Chesterfield (Hampshire), MA

the exact route of this canal and whether it connected with a head race that delivered water to the Pierce Cornmill, moved to a site north of the Bisbee Mill in ca.1830. Similar research may locate structural evidence and the route of tailraces that exited each mill to return water to the river. Research methods identified above might also discover whether water exiting the Pierce mill somehow continued to the Bisbee Mill.

In 1859, a new dam was built roughly east of the Bisbee Mill that impounded water in a new millpond east of the earlier pond. The new millpond delivered water to the Bisbee Mill only, which by this time included the Pierce Cornmill attached to the Bisbee Mill sometime between 1855-1867. Documentary research combined with archaeological survey and testing may determine the exact route of the headrace from the new millpond to the west side of the Bisbee Mill where it is visible today. That research might also determine if portions of the existing canal incorporated part of the earlier 1823 canal that delivered water to the mill from the earlier millpond.

Historical and archaeological research will both be important to decipher the maze of power canals and their relationships between three mills on the west side of the river from ca. 1761 to 1947. Construction of power canals on the Bisbee Mill property was clearly influenced by a hierarchal relationship between the mills and enterprises at each mill. This relationship is identified in deeds given to Osman and Orin Bisbee in ca. 1835 for the Bisbee Mill and Pierce Corn mill that explicitly divided the distribution of water between the mills giving first priority to the cornmill. Archaeological and historical information may help understand the relationship between the mills and predict the presence and location of resources (ex. penstocks, canal routes) based on documentary sources. Similar sources may also identify the type of power source used at each mill and its relationship to the distribution of water. Certain water wheel technologies may be better adapted for restricted water flow and implemented for that reason. The presence of a turbine (ca.1919) at the Bisbee Mill also implies the presence of adaptive reuse over time and the evolution of waterpower systems at the mill.

The detailed analysis of the contents of occupational related features (trash pits, privies, wells) may also contribute important information that identifies changes in manufacturing and technologies at each mill. Potential stratification of deposits within occupational related features may establish a time line for activities at related mills keyed to ownership of different members of the Bisbee family and mill functions over time. Documentary sources combined with the contents

(continued)

United States Department of the Interior
National Park Service

National Register of Historic Places Continuation Sheet

Section number 8/9 Page 12/1 **Bisbee Mill**
Chesterfield (Hampshire), MA

of occupational related features may contribute further documentation on the multi-purpose function of the Bisbee Mill(s) and the extent they served the needs of the surrounding community. Detailed analysis of the contents of occupational-related features may also contribute social, cultural, and economic information on five generations of the Bisbee family and how the family may have changed over time. Occupational related features associated with the different mills may also contain information that indicated the extent that earlier or later mills may have incorporated a residential function for workers at the mill.

(end)

Bibliography

Baker, Ruth, Dorothy K. Smith and Elizabeth S. Versailles. History and Genealogy of the Families of Chesterfield, Massachusetts, Chesterfield, 1962.

Bisbee, Charles A. Jr. History of the Bisbee Mill, typescript, 2002.

_____. Products of the Bisbee Mill from 1823-1962 and their effect upon the Life and Times of that Era, typescript, 2002.

Gay, W.B. (publisher). Hampshire County Gazeteer, 1654-1887, New York, n.d.

Harris, Stuart. A Report on the Feasibility and Method of Restoration of the Grist Mill at the Bisbee Mill Museum, typescript and schematic drawings, 1998.

Massachusetts Historical Commission. Reconnaissance Survey Report, "Chesterfield", typescript, 1982.

Sayre, Geneva, Ruth A. Temple and Ruth A. Baker. "Chesterfield" in Wikander, et. al., The Hampshire History, Northampton, 1964.

Town of Chesterfield. Two Hundredth Anniversary of the Incorporation of Chesterfield, Mass. 1762-1962, July, 1962.

(continued)

United States Department of the Interior
National Park Service

National Register of Historic Places Continuation Sheet

Section number 9 Page 2 **Bisbee Mill**
Chesterfield (Hampshire), MA

U. S. Federal Censuses for 1830, 1870 and 1910.

H. F. Walling. Atlas of Hampshire County Massachusetts, New York, 1860.

F. W. Beers. County Atlas of Hampshire, Massachusetts, New York, 1874.

Map of 1830.

MassGIS/MHD Color Orthophoto Map for Chesterfield

(end)

Bisbee Mill
Name of Property

Hampshire, MA
County, State

10. Geographical Data

Acreage of Property 2 acres

UTM References See continuation sheet.
(Place additional UTM references on a continuation sheet)

1. 18 Zone	679600 Easting	4693780 Northing	3. 18 Zone	679500 Easting	4693620 Northing
2. 18 Zone	679540 Easting	4693620 Northing	4. 18 Zone	679540 Easting	4693780 Northing

— See continuation sheet

Verbal Boundary Description
(Describe the boundaries of the property on a continuation sheet.)

Boundary Justification
(Explain why the boundaries were selected on a continuation sheet.)

11. Form Prepared By

name/title Bonnie Parsons, principal planner, PVPC with Betsy Friedberg, NR Director, MHC

organization Massachusetts Historical Commission date February 2005

street & number 220 Morrissey Boulevard telephone 617-727-8470

city or town Boston state MA zip code 02125

Additional Documentation

Submit the following items with the completed form:

Continuation Sheets

Maps

- A **USGS map** (7.5 or 15 minute series) indicating the property's location.
- A **sketch map** for historic districts and properties having large acreage or numerous resources.

Photographs

Representative **black and white photographs** of the property.

Additional items (Check with the SHPO or FPO for any additional items)

Property Owner

(Complete this item at the request of the SHPO or FPO.)

name Chesterfield Historical Society

street & number Main Street telephone 413-296-4242

city or town Chesterfield state MA zip code 01012

Paperwork Reduction Act Statement: This information is being collected for applications to the National Register of Historic Places to nominate properties for listing or determine eligibility for listing, to list properties, and to amend existing listings. Response to this request is required to obtain a benefit in accordance with the National Historic Preservation Act, as amended (16 U.S.C. 470 et seq.).

Estimated Burden Statement: Public reporting burden for this form is estimated to average 18.1 hours per response including the time for reviewing instructions, gathering and maintaining data, and completing and reviewing the form. Direct comments regarding this burden estimate or any aspect of this form to the Chief, Administrative Services Division, National Park Service, P.O. Box 37127, Washington, DC 20013-7127; and the Office of Management and Budget, Paperwork Reductions Project (1024-0018), Washington, DC 20503.

United States Department of the Interior
National Park Service

National Register of Historic Places Continuation Sheet

Section number 10

Page 1

Bisbee Mill
Chesterfield (Hampshire), MA

Geographical References

Boundary Description.

Please see the attached Assessor's map, sheet 32, Lot 35 for Boundary Description. Two small square outbuildings that show on the assessors map are no longer standing on the property.

Note that the Bisbee Mill is located incorrectly on the USGS quad map (Chester). The mill location is marked correctly in pencil; the property straddles two quad maps, Chester and Goshen, MA.

Boundary Justification

The boundaries for Bisbee Mill were drawn to coincide with the lot lines of the property. They enclose the mill building, a portion of the Dead Branch of the Westfield River, a small portion of the canal that enters the west side of the mill, the 1859 dam site, a portion of the area of the former millpond, and an area of archaeological potential for the 1761 Damon sawmill and the site of the 1830 Pierce Corn Mill. The nominated area may also include the 1761 site of the Pierce Corn Mill on the east side of the river.

(end)

United States Department of the Interior
National Park Service

National Register of Historic Places Continuation Sheet

Section number photo Page 1 **Bisbee Mill**
Chesterfield (Hampshire), MA

List of Photographs

Bisbee Mill

Hampshire, Massachusetts

Shannon Brisbois

September, 2002

*Pioneer Valley Planning Commission**

View to northwest

Photograph No. 1

View to southeast

Photograph No. 2

View to northeast

Photograph No. 3

View to west

Photograph No. 4

First Level view to west of turbine

Photograph No. 5

First Level view to north of gear

Photograph No. 6

First level view to southwest of line shafting

Photograph No. 7

First Level view to northwest of stairs to second level

Photograph No. 8

Second Level view to southwest of grist mill

Photograph No. 9

(continued)

United States Department of the Interior
National Park Service

National Register of Historic Places Continuation Sheet

Section number photo Page 2 **Bisbee Mill**
Chesterfield (Hampshire), MA

Second level view to northeast of hearse and Post Office artifacts
Photograph No. 10

Second level view to northeast of gristmill
Photograph No. 11

Third Level view to east of woodworking shop
Photograph No. 12

Third Level view to northwest of woodworking shop
Photograph No. 13

Third Level view to east of blacksmith shop
Photograph No. 14

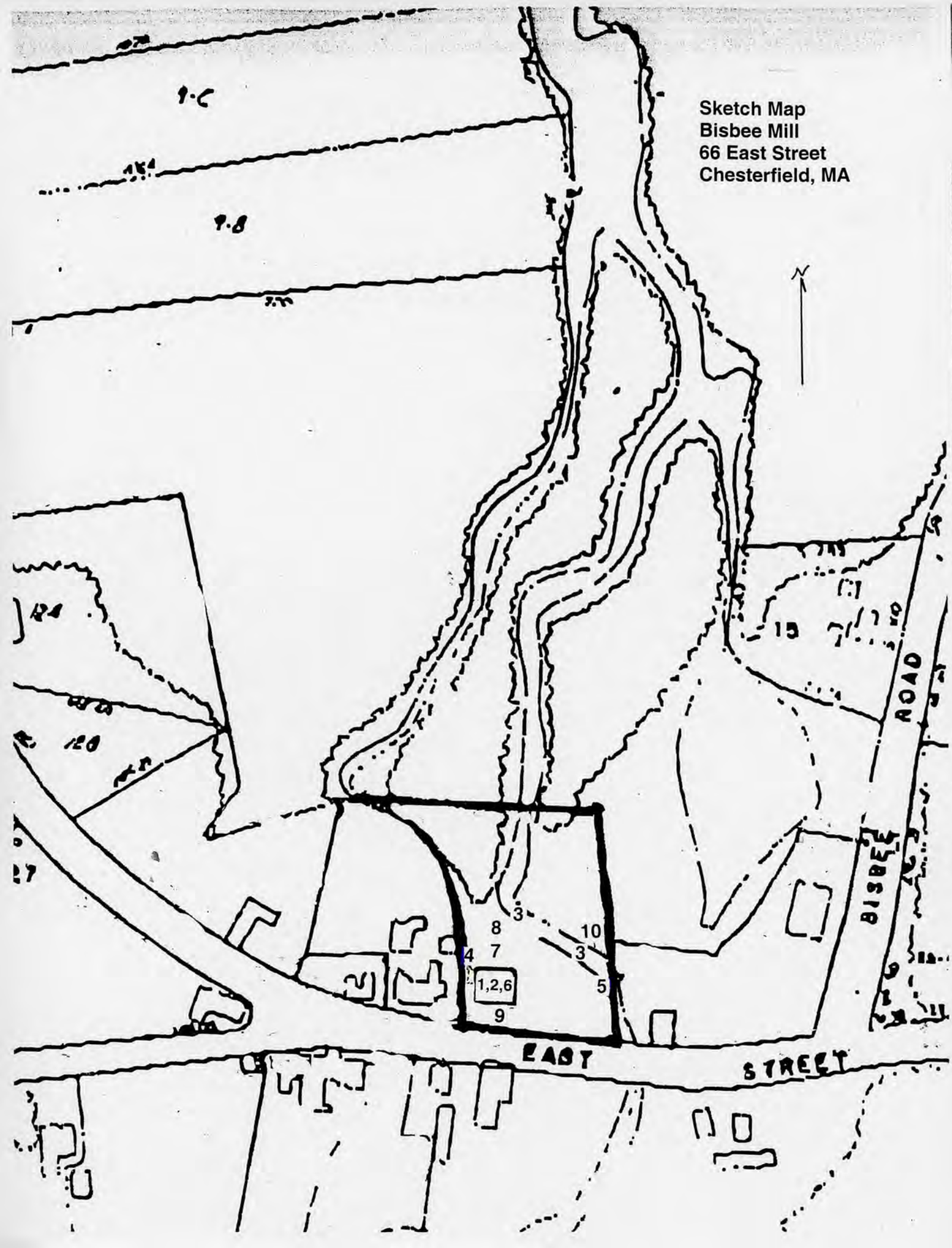
- *This identification is common for all photographs*

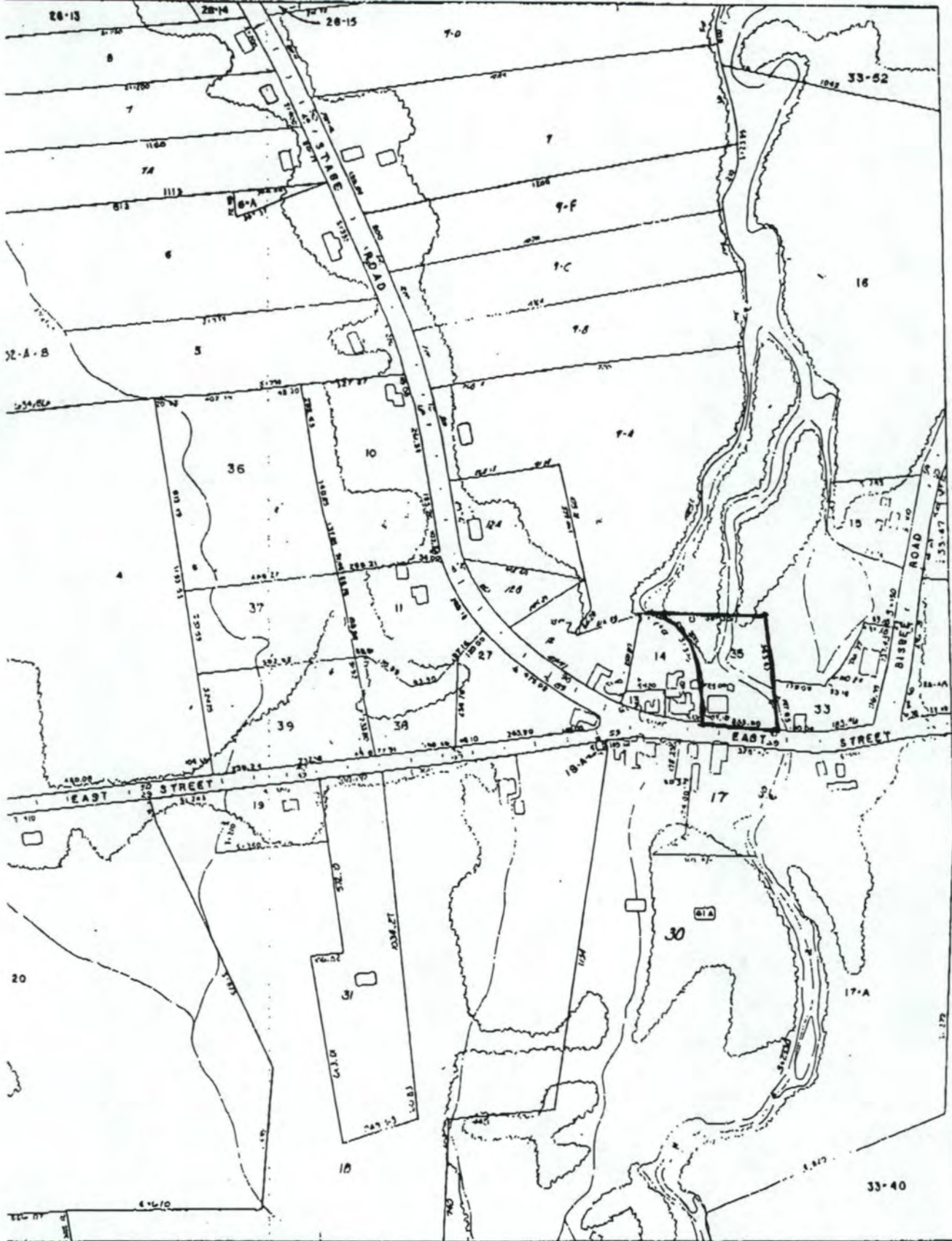
(end)

Bisbee Mill Data Sheet
Chesterfield

Map No.	Address	Historic Name	Date	Style	Resource	Status
1	66 East Street	Bisbee sawmill	1823	utilitarian	Building	C
2	66 East Street	Pierce cornmill attached (attr.)	ca. 1761	utilitarian	Building	C
3	66 East Street	mill pond (portion)	1859	N/A	Site	C
4	66 East Street	canal	1859	N/A	Structure	C
5	66 East Street	dam site	ca. 1859	N/A	Site	C
6	66 East Street	Jolly vertical turbine	ca. 1919	N/A	Structure	C
7	66 East Street	site of Pierce Cornmill	ca. 1823-1835	N/A	Site	C
8	66 East Street	site of Damon mill	ca. 1761	N/A	Site	C
9	66 East Street	sign in form of well	2002	NA	Structure	NC
10		Feeder canal (partial)	1859		Structure	C
		Contributing	Noncontributing			
	Building	2	0			
	Site	4	0			
	Structure	3	1			
	Object	0	0			
	Total	9	1			

Sketch Map
Bisbee Mill
66 East Street
Chesterfield, MA





**HESTERFIELD
HUSSETTS**

RS PLAN



1	2	3	4	5	6
7	8	9	10	11	12
13	14	15	16	17	18
19	20	21	22	23	24
25	26	27	28	29	30
31	32	33	34	35	36
37	38	39	40	41	42
43	44	45	46	47	48
49	50	51	52	53	54
55	56	57	58	59	60
61	62	63	64	65	66
67	68	69	70	71	72
73	74	75	76	77	78
79	80	81	82	83	84
85	86	87	88	89	90
91	92	93	94	95	96
97	98	99	100		



32

UNITED STATES DEPARTMENT OF THE INTERIOR
NATIONAL PARK SERVICE

NATIONAL REGISTER OF HISTORIC PLACES
EVALUATION/RETURN SHEET

REQUESTED ACTION: NOMINATION

PROPERTY NAME: Bisbee Mill

MULTIPLE NAME:

STATE & COUNTY: MASSACHUSETTS, Hampshire

DATE RECEIVED: 2/17/05 DATE OF PENDING LIST: 3/10/05
DATE OF 16TH DAY: 3/25/05 DATE OF 45TH DAY: 4/02/05
DATE OF WEEKLY LIST:

REFERENCE NUMBER: 05000219

REASONS FOR REVIEW:

APPEAL: N DATA PROBLEM: N LANDSCAPE: N LESS THAN 50 YEARS: N
OTHER: N PDIL: N PERIOD: N PROGRAM UNAPPROVED: N
REQUEST: N SAMPLE: N SLR DRAFT: NATIONAL: N

COMMENT WAIVER: N

ACCEPT RETURN REJECT 3/31/2005 DATE

ABSTRACT/SUMMARY COMMENTS:

RECOM./CRITERIA Accept A&C
REVIEWER Patrick Andrus DISCIPLINE Historian
TELEPHONE _____ DATE 3/31/2005

DOCUMENTATION see attached comments Y/N see attached SLR Y/N

If a nomination is returned to the nominating authority, the nomination is no longer under consideration by the NPS.



Dusbee Mill
Hampshire, Massachusetts
Shannon Brisbois
September, 2002
PVPc
View to Northwest
Photograph No. 1

August 04 1063690 1211 1 1



Bisbee Mill
Hampshire, Massachusetts
Shannon Brisbois
September, 2002
PVPc
V: w to Southeast
Photograph No. 2

August 04 1043690 1211 1 N



Bisbee Mill
Hampshire, Massachusetts
Shannon Brisbois
September, 2002
PVPc
View to north east
Photograph No. 3

August 04 1023690 1211 1 1



Bisbee Mill
Hampshire, Massachusetts
Shannon Brisbois
September, 2002
PVP
View to West
Photograph No. 4

August 04 10:06:50 1211 1 1



Besbee Mill
Hampshire, Massachusetts
Shannon Brisbois

September, 2002

PVPC

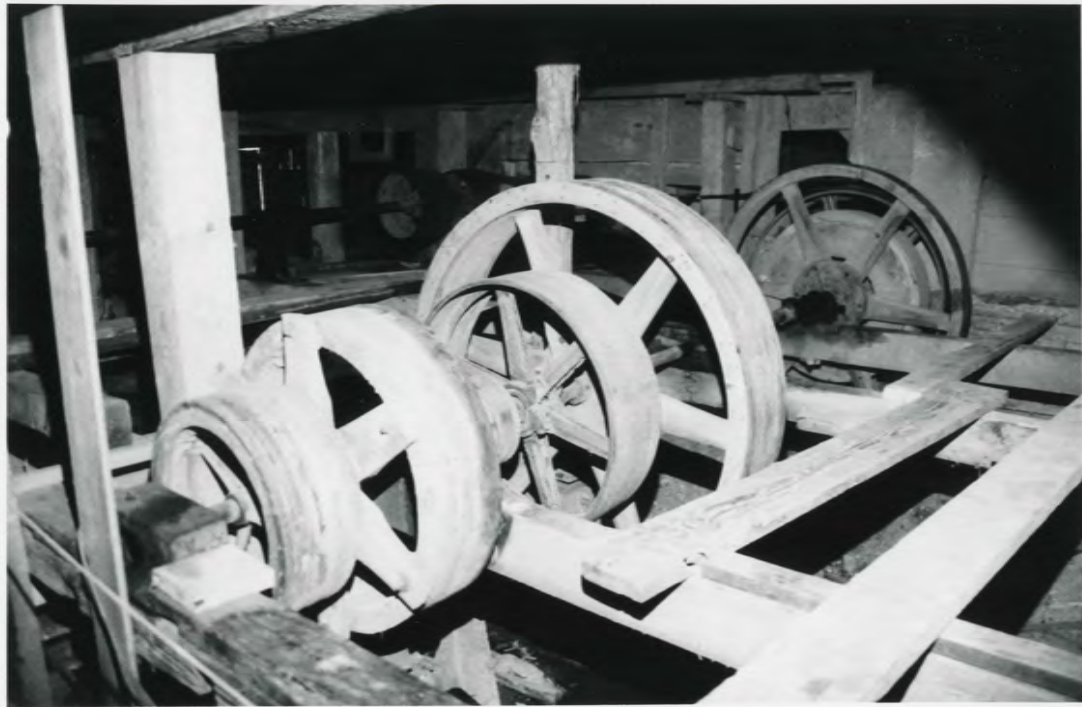
First Floor view: ew tunnels west of turbine
Photograph No. 5

August 04 12:06:50 121 1 2



Bisbee Mill
Hampshire, Massachusetts
Shannon Brisbois
September, 2002
PVP
First Floor view - 6 north of gear
Photograph No. 6

August 04 1243690 1211 12



Bieber Mill
Hampshire, Massachusetts
Shannon Brisbois

September, 2002

PVPC

First Floor View to southwest of line shafting
Photograph No. 7

August 04 12:06:50 121 1 2



Bisbee Mill

Hampshire, Massachusetts

Shannon Brisbois

September, 2002

PVPC

View on First Floor to north west of stairs to second Floor

Photograph NO. 8

August 04 1300690 1211 12



Bisbee Mill
Hampshire, Massachusetts
Shannon Brisbois

September, 2002

PVPC

Second Floor View to South West of grist mill
Photograph No. 9

August 04 12:06:50 121 1 1



Bisbee Mill
Hampshire, Massachusetts

Shannon Brisbois

September, 2002

PVPC

Second Floor view to north east of house + Post office artifacts

Photograph No. 10

August 04 1323690 121 1 2



Bisbee Mill

Hampshire, Massachusetts

Shannon Brisbois

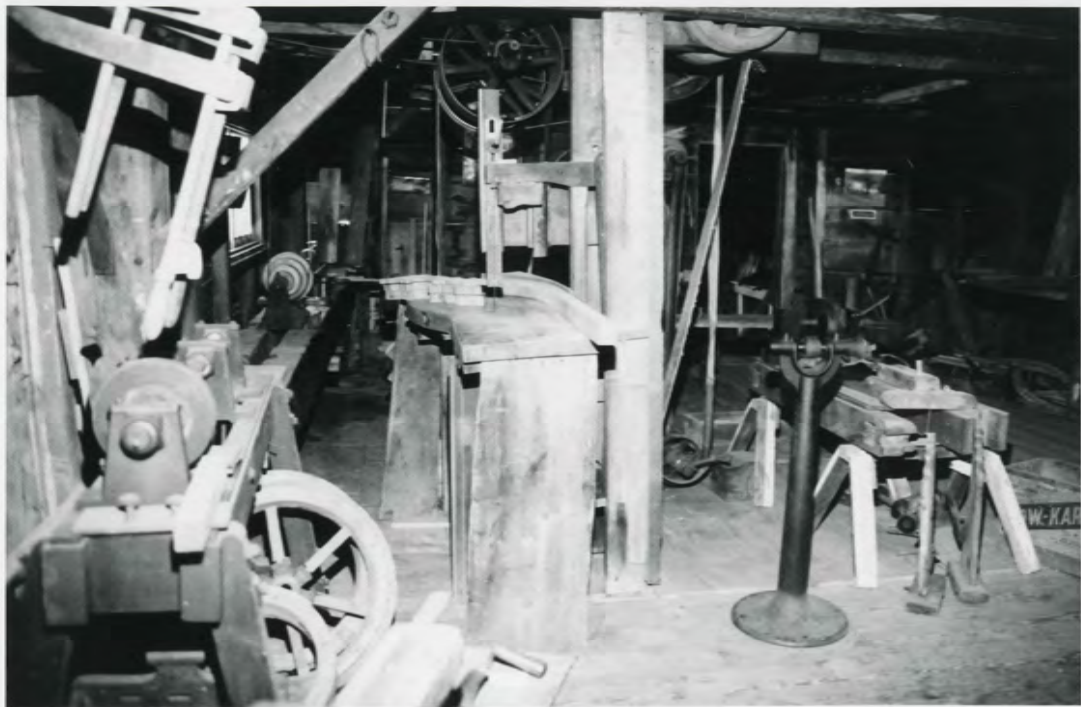
September, 2002

PVPC

Second Floor view to north-east of grist mill

Photograph No. 11

August 01 1222690 1211 1 N



Bieber Mill
Hampshire, Massachusetts
Shannon Briabois
September, 2002
PVP

Third Floor view to east of woodworking shop
Photograph no. 12

August 04 11:43:50 AM '11



Bibee Mill

Hampshire, Massachusetts

Shannon Brisbois

September, 2002

PVPC

Third Floor view to north west of woodworking shop

Photo No. 13

August 04 11:23:50 AM '11



Bisbee Mill
Hampshire, Massachusetts
Shannon Brisbois

September, 2002

PVPC

Third Floor view to east of blacksmith shop

Photograph No. 14

August 04 11:26:30 12 1 1 1



CHESTER, MASSACHUSETTS

7.5 X 15 MINUTE SERIES (TOPOGRAPHIC)

USGS
 science for a changing world

Chester
 MASSACHUSETTS
 1:25 000-scale metric
 topographic map

Map 272

7.5 X 15 MINUTE QUADRANGLE SHOWING

- Contours and elevations in meters
- Highways, roads and other manmade structures
- Water features
- Woodland areas
- Geographic names

U.S. Department of the Interior
 U.S. Geological Survey

1997

Produced by the United States Geological Survey
 Derived from imagery taken 1980 and other sources. Photocopied using imagery taken 1997, no major culture or drainage changes observed. Survey control current as of 1981. Boundaries revised 1999. Supersedes Chester and Westhampton 1:25,000-scale maps dated 1972.

North American Datum of 1927 (NAD 27). Projection and 1000-meter grid. Universal Transverse Mercator, zone 18. 10 000-foot ticks. Massachusetts coordinate system, meridian zone North American Datum of 1983 (NAD 83) is shown by dashed corner ticks. The values of the shift between NAD 27 and NAD 83 for 7.5-minute intersections are obtainable from National Geodetic Survey NADCON software.

There may be private inholdings within the boundaries of the National or State reservations shown on this map.

CONTOUR INTERVAL 6 METERS
 NATIONAL GEODETIC VERTICAL DATUM OF 1929
 CONTROL ELEVATIONS SHOWN TO THE NEAREST 0.1 METER
 OTHER ELEVATIONS SHOWN TO THE NEAREST METER

THIS MAP COMPLIES WITH NATIONAL MAP ACCURACY STANDARDS

CONVERSION TABLE		DECLINATION DIAGRAM		ADJOINING MAPS			
Meters	Feet	15°	17°	1	2	3	
1	3.2808			4	5		
2	6.5617			6	7	8	
3	9.8425						
4	13.1234						
5	16.4042						
6	19.6850						
7	22.9659						
8	26.2467						
9	29.5275						
10	32.8084						

To convert meters to feet multiply by 3.2808
 To convert feet to meters multiply by 0.3048

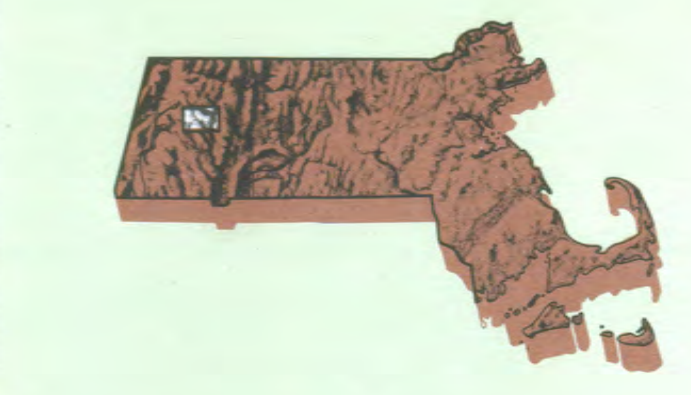
UTM grid convergence (IGN and 1989 magnetic declination (MM) at center of map. Diagram is approximate.

1 Franklin East
 2 Cochen
 3 Williamsburg
 4 East Lee
 5 Easthampton
 6 One
 7 Haverhill
 8 Springfield North



Topographic Map Symbols

Primary highway, hard surface	
Secondary highway, hard surface	
Light-duty road, hard or improved surface	
Unimproved road, trail	
Road marker: Interstate, U.S., State	
Railroad: standard gauge, narrow gauge	
Bridge: drawbridge	
Footbridge; overpass; underpass	
Build-up area: only selected landmark buildings shown	
House; barn; church; school; large structure	
Boundary:	
National, with monument	
State	
County, parish	
Civil township, precinct, district	
Incorporated city, village, town	
National or State reservation, small park	
Land grant with monument; forest section corner	
U.S. public lands survey: range, township, section	
Range, township, section line: location approximate	
Range or field line	
Power transmission line, located tower	
Dam; dam with lock	
Cemetery, grave	
Campground; picnic area; U.S. location monument	
Wellhead; water well; spring	
Mine shaft; prospect; adit or cave	
Control: horizontal station; vertical station; spot elevation	
Contour: index; intermediate; supplementary; depression	
Distorted surface: strip mine, lava, sand	
Bathymetric contours: index; intermediate	
Perennial lake and stream; intermittent lake and stream	
Rescue, large and small; lake, large and small	
Swamp; marsh	
Submerged marsh; land subject to controlled inundation	
Woodland: scattered trees	
Sand; mangrove	
Drchard; vineyard	



- 7.5 X 15 MINUTE QUADRANGLE SHOWING
- Contours and elevations in meters
 - Highways, roads and other manmade structures
 - Water features
 - Woodland areas
 - Geographic names

U.S. Department of the Interior U.S. Geological Survey 1997

Produced by the United States Geological Survey
 Derived from imagery taken 1981 and other sources. Photo-revised using imagery taken 1997; no major culture or drainage changes observed. Survey control current as of 1984. Boundaries revised 1999.
 Supersedes Goshen and Worthington 1:25,000-scale maps dated 1972.
 North American Datum of 1927 (NAD 27). Projection and 1000-meter grid. Universal Transverse Mercator, zone 18 10 000-foot ticks. Massachusetts coordinate system, mainland zone North American Datum of 1983 (NAD 83) is shown by dashed corner ticks. The values of the shift between NAD 27 and NAD 83 for 7.5-minute intersections are obtainable from National Geodetic Survey NADCON software.
 There may be private inholdings within the boundaries of the National or State Reservations shown on this map.

CONTOUR INTERVAL 4 METERS
 NATIONAL GEODETIC DATUM OF 1929
 CONTROL ELEVATIONS SHOWN TO THE NEAREST 0.1 METER
 OTHER ELEVATIONS SHOWN TO THE NEAREST METER

THIS MAP COMPLIES WITH NATIONAL MAP ACCURACY STANDARDS

Meters	Feet
1	3.2808
2	6.5617
3	9.8425
4	13.1234
5	16.4042
6	19.6850
7	22.9659
8	26.2467
9	29.5275
10	32.8084

To convert meters to feet multiply by 3.2808
 To convert feet to meters multiply by 0.3048

DECLINATION DIAGRAM	ADJOINING MAPS									
<p>15° 287 MILS 11° 20' 28 MILS</p> <p>UTM grid convergence (GM) and magnetic declination (MN) at center of map. Diagram is approximate.</p>	<table border="1"> <tr><td>1</td><td>2</td><td>3</td></tr> <tr><td>4</td><td>5</td><td>6</td></tr> <tr><td>7</td><td>8</td><td></td></tr> </table> <p>1 Chester 2 Ashfield 3 Greenfield 4 Pittsfield East 5 Westhampton 6 East Lee 7 Chester 8 Easthampton</p>	1	2	3	4	5	6	7	8	
1	2	3								
4	5	6								
7	8									

Topographic Map Symbols

- Primary highway, hard surface
- Secondary highway, hard surface
- Light-duty road, hard or improved surface
- Unimproved road, trail
- Road marker: intermittent U.S. State
- Railroad: standard gage; narrow gage
- Bridge: drawbridge
- Fourbridge: overpass; underpass
- Build-up area: only selected landmark buildings shown
- House: barn; church; school; large structure
- Boundary:
 - National, with monument
 - State
 - County, parish
 - Civil township, precinct, district
 - Incorporated city, village, town
 - National or State reservation; small park
 - Land grant with monument; forest section corner
 - U.S. public lands survey: range, township, section
 - Range, township, section line: location approximate
- Fence or field line
- Power transmission line, isolated tower
- Dam; dam with lock
- Cemetery; grave
- Campground; picnic area; U.S. location monument
- Wildwell; water well; spring; forest section corner
- Mine shaft; prospect; adit or cave
- Control: horizontal station; vertical station; spot elevation
- Contours: index; intermediate; supplementary; depression
- Disturbed surface: strip mine; lava; sand
- Bathymetric contours: index; intermediate
- Perennial lake and stream; intermittent lake and stream
- Rapid, large and small; falls, large and small
- Swamp; marsh
- Submerged marsh; land subject to controlled inundation
- Woodland: scattered trees
- Scrub; mangrove
- Orchard; vineyard

A pamphlet describing topographic maps is available on request
 FOR SALE BY U.S. GEOLOGICAL SURVEY
 P.O. BOX 25286, DENVER, COLORADO 80225



RECEIVED

Chesterfield Historical Society
Chesterfield, MA 01012

NOV 12 2002

MASS. HIST. COMM

Edwards Museum
3 North Road

Web site: WWW.bisbeemillmuseum.org
e-mail: cabjr18@webtv.net

Bisbee Mill Museum
66 East Street

Chesterfield, MA 01012
November 6, 2002

The Massachusetts Historical Commission
220 Morrissey Boulevard
Boston, MA 02125

Gentlemen:

The Chesterfield Historical Society, owner and operator of the Bisbee Mill Museum, strongly supports the proposal to place this mill on the National Register of Historic Places.

Several preliminary votes were taken and the final recorded vote was taken in July 29, 1999 and reads as follows: "Voted: To approve the action of the president in carrying out the unanimous recommendation of the full membership of the Bisbee Mill Museum Advisory Board, to contact the Mass. Historical Commission concerning the action to be taken to place the building on the National Register of Historic Places and to provide such information and historical data to them as may be necessary."

This vote was passed unanimously.

The action indicated above by the president was taken after a meeting of the Bisbee Mill Museum Advisory Board on the first Sunday in June 1999.

The president and several members of the Society assisted in providing historic data necessary. The Society continues to wholeheartedly and unanimously support this action.

Very truly yours

Mary Lou Curtis

Mary Lou Curtis
Clerk, Chesterfield Historical Society.



FEB 17

The Commonwealth of Massachusetts
William Francis Galvin, Secretary of the Commonwealth
Massachusetts Historical Commission

February 11, 2005

Ms. Carol Shull
National Register of Historic Places
Department of the Interior
National Park Service
1201 Eye Street, NW 8th Floor
Washington, DC 20005

Dear Ms. Shull:

Enclosed please find the following nomination form:

Bisbee Mill, Chesterfield (Hampshire), MA

The nomination has been voted eligible by the State Review Board and has been signed by the State Historic Preservation Officer. The owners of the property were notified of pending State Review Board consideration 30 to 45 days before the meeting and were afforded the opportunity to comment.

One letter of support has been received.

Sincerely,

A handwritten signature in cursive script that reads "Betsy Friedberg".

Betsy Friedberg
National Register Director
Massachusetts Historical Commission

enclosure

cc: Naomi Sturtevant, Chesterfield Historical Society
Bonnie Parsons, Preservation Consultant
Chesterfield Historical Commission
Roger Fuller, Chesterfield Board of Selectmen
Charles Valencik, Planning Board