

United States Department of the Interior
National Park Service

801

National Register of Historic Places Registration Form

This form is for use in nominating or requesting determinations for individual properties and districts. See instructions in National Register Bulletin, *How to Complete the National Register of Historic Places Registration Form*. If any item does not apply to the property being documented, enter "N/A" for "not applicable." For functions, architectural classification, materials, and areas of significance, enter only categories and subcategories from the instructions.



1. Name of Property

Historic name: The Suffolk Peanut Company

Other names/site number: VDHR # 133-5568

Name of related multiple property listing:

N/A

(Enter "N/A" if property is not part of a multiple property listing)

2. Location

Street & number: 303 South Saratoga Street

City or town: Suffolk State: VA County: Independent City

Not For Publication: N/A Vicinity: N/A

3. State/Federal Agency Certification

As the designated authority under the National Historic Preservation Act, as amended,

I hereby certify that this nomination request for determination of eligibility meets the documentation standards for registering properties in the National Register of Historic Places and meets the procedural and professional requirements set forth in 36 CFR Part 60.

In my opinion, the property meets does not meet the National Register Criteria. I recommend that this property be considered significant at the following level(s) of significance:

national statewide local

Applicable National Register Criteria:

A B C D

	<u>9-21-16</u>
Signature of certifying official/Title:	Date
<u>Virginia Department of Historic Resources</u>	
State or Federal agency/bureau or Tribal Government	

In my opinion, the property <input type="checkbox"/> meets <input type="checkbox"/> does not meet the National Register criteria.	
Signature of commenting official:	Date
Title :	State or Federal agency/bureau or Tribal Government

The Suffolk Peanut Company
Name of Property

City of Suffolk, VA
County and State

4. National Park Service Certification

I hereby certify that this property is:

- entered in the National Register
 determined eligible for the National Register
 determined not eligible for the National Register
 removed from the National Register
 other (explain:)

for Edson H. Beall 2018-11-27
Signature of the Keeper Date of Action

5. Classification

Ownership of Property

(Check as many boxes as apply.)

- Private:
Public – Local
Public – State
Public – Federal

Category of Property

(Check only **one** box.)

- Building(s)
District
Site
Structure
Object

The Suffolk Peanut Company
Name of Property

City of Suffolk, VA
County and State

Number of Resources within Property

(Do not include previously listed resources in the count)

Contributing	Noncontributing	
<u>13</u>	<u>6</u>	buildings
<u>0</u>	<u>0</u>	sites
<u>1</u>	<u>3</u>	structures
<u>0</u>	<u>0</u>	objects
<u>14</u>	<u>9</u>	Total

Number of contributing resources previously listed in the National Register 0

6. Function or Use

Historic Functions

(Enter categories from instructions.)

COMMERCE/TRADE: warehouse

AGRICULTURE/SUBSISTENCE: processing, storage

TRANSPORTATION: rail-related

Current Functions

(Enter categories from instructions.)

COMMERCE/TRADE: warehouse

AGRICULTURE/SUBSISTENCE: storage

The Suffolk Peanut Company
Name of Property

City of Suffolk, VA
County and State

7. Description

Architectural Classification

(Enter categories from instructions.)

LATE 19TH AND EARLY 20TH CENTURY AMERICAN MOVEMENTS: Commercial Style

Materials: (enter categories from instructions.)

Principal exterior materials of the property: BRICK, METAL: Steel, CONCRETE, GLASS, SYNTHETICS: Vinyl, Plastic

Narrative Description

(Describe the historic and current physical appearance and condition of the property. Describe contributing and noncontributing resources if applicable. Begin with a **summary paragraph** that briefly describes the general characteristics of the property, such as its location, type, style, method of construction, setting, size, and significant features. Indicate whether the property has historic integrity.)

Summary Paragraph

The Suffolk Peanut Company is located on a large wedge-shaped ten-acre site on South Saratoga Street in Suffolk, Virginia. The large peanut processing complex consists of numerous warehouses and several processing buildings spread out across the site with many concentrated along the north end bordering the former Norfolk & Western Railroad line. The early twentieth century buildings, which make up a majority of the resources, are brick masonry Commercial Style with some limited design articulation. The site is flat with grass and gravel between resources and surrounded by a high chain link fence. There is a small stand of trees on the eastern end of the property. The surrounding area is mostly light industrial with no sidewalks. With the intact railroad to the north, an intact spur on the property, numerous contributing resources with strong integrity, the overall setting of the property is one that retains much of the historic character and materials. The property has 14 contributing resources and 9 non-contributing resources, the latter of which postdate the property's period of significance.

Narrative Description

The former Suffolk Peanut Company complex on South Saratoga Street, bordered by the Norfolk Southern railroad line to the north, Wellons Street to the west, and South Saratoga Street to the south, is located on a ten-acre wedge-shaped parcel. The property retains numerous warehouses,

The Suffolk Peanut Company
Name of Property

City of Suffolk, VA
County and State

buildings, and large scale equipment used at one time or another in the peanut processing and storage industry from the beginning of the twentieth century until the sale of the company to Goldkist Inc. around 1968. The older buildings on the site are lined up parallel to the railroad line in a narrow band, and represent the original company parcel until it was expanded to encompass the current site in 1917. Two groups of warehouses date to the early period of development of the Suffolk Peanut Company. Warehouses 2, 3, 4, 5 were built along with the original ca 1902 mill (demolished in the last decade). Another mill was constructed ca 1914 and ca 1920 warehouses 10 and 11 were added soon after. Later the 1928 Central Warehouse was constructed as the business expanded and this may also date the addition of the expanded railroad spur into the center of the site. The second mill was destroyed in a fire and replaced by the current five-story 1932 mill on the same site. An expansion of the complex accompanied the construction of the new mill in 1932 including the cold storage warehouse ca 1932, a boiler house and power plant ca 1937, and an expansion to the mill added by 1949. As peanut storage became an increased focus of the business, the cold storage warehouse was expanded ca 1950 and three large metal warehouses were built between 1963 and 1972. Finally, the grading warehouse was rebuilt and expanded ca 1976 and followed by a new office, truck scales, and a sampling station in the 1980s completing the current complex. The currently existing resources are as follows, and labelled to match the accompanying map.

- A) Railroad Spur, ca 1903, ca 1932 C (structure):** The smaller northern end of the spur was constructed as part of the original ca 1903 mill and warehouse development. Elements of this spur remain paralleling the current Norfolk Southern railroad lines. The second spur was added as part of the new mill constructed in 1932. This spur went from the main line into the center of the parcel to serve the Central Warehouse and the Cold Storage Warehouse. This track is intact, but partially covered by dirt and grass.
- B) Warehouse 2, ca 1907 (ca 1953 addition) C (building)**
- C) Warehouse 3, ca 1903 C (building)**
- D) Warehouse 4, ca 1907 C (building):** These three warehouses are one-story brick masonry construction featuring six-and seven-course American bond with poured concrete foundations. The exteriors have several repairs, but the majority of the original brick work is intact. The central portion was constructed first, with the two sides added soon after. The easternmost warehouse eventually was clipped on its north and south sides to accommodate the two railroad spurs; a mid-twentieth century addition extended the end of the warehouse to a point. The roof of all three warehouses utilizes an extended stepped parapet to unify the exterior while featuring a flat and sloping roof with standing seam metal cladding. There are two loading doors on the south side and several smaller openings. There are also several loading doors on the northern railroad side which abut the extended covered concrete walkway. The interior of these warehouses are separated into three spaces which feature similar wood post supports, exposed wood ceiling joists and roof boards. The central space features a shallow gable, while the two side

The Suffolk Peanut Company
Name of Property

City of Suffolk, VA
County and State

warehouses have sloped roofs. The floors are poured concrete and appear to have replaced earlier flooring. There are no windows and the walls are exposed brick.

- E) Warehouse 5, ca 1913 C (building):** This warehouse was built to serve the plant's expanding storage needs and is a seven-course American bond four-story brick masonry building with a sloped roof featuring a parapet and a membrane cladding. There are two windows on the north and south end of each floor, but none on the east and west sides. The window openings are intact with round brick arches, but the original window sash have been replaced. There are also openings below the floor level on the north and south ends providing access to a crawl space. Each interior floor features two rows of thick wood posts supporting large beams running the width of the building which are topped by wood subflooring running the opposite direction. The flooring is wood and the walls are exposed brick. There is an historic freight elevator in the northeast corner of the building which serves all four floors. The top floor has some water damage from a leaking roof and features joists to support the roof planking. The foundation is not visible, but the first floor is frame construction with wood flooring, making a brick pier foundation likely.
- F) Peanut Elevators, ca 1972 NC (structure):** The peanut elevators were installed in the last period of expansion, likely to replace earlier equipment. They also served to connect the four-story Warehouse 5 with the main mill building. The exterior has corrugated metal siding with no windows. The interior elevator runs the full height of the approximately four-story structure. There is also a large metal canopy covering a poured concrete loading platform, constructed at the same time, which connects the peanut elevator building to the Central Warehouse. The foundation is poured concrete while the flat roof is clad in corrugated metal matching the siding.
- G) Mill, 1932 C (building):** This five-story building features poured concrete floors, support columns, joists, ceilings, and floors with seven-course American bond brick masonry construction for the exterior walls between each part of the seven-bay concrete grid. There is a large peanut sorter attached to the southwest end of the roof with extensions down the sides of the building. There is an elevator on the south central side of the building with a penthouse on the roof. There is a covered concrete loading platform which runs the full width of the building on the southern elevation, matching the platform which runs along the railroad tracks on the north side. The southeast corner features an historic interior office with original interior six-over-six wood sash windows and exterior twelve light metal jalousie windows. Each level features concrete floors, concrete columns supporting concrete joists, and concrete ceilings where the impressions of the wood planks from the molds can still be seen. There is an abundance of abandoned equipment on every level. A concrete stair on the east wall provides access to each level. There are four windows on each level of the south side, three windows on each level of

The Suffolk Peanut Company
Name of Property

City of Suffolk, VA
County and State

the west and east ends, and three windows on each level of the north side. All of the windows are steel frame multi-light industrial windows with awning and hopper opening elements. The windows on the ends are fifteen light; the windows on the two sides are twenty light; there are also a few scattered windows of different sizes all featuring metal sash. On the north (railroad) side of the second story are six enormous forty-light metal sash windows which almost fill the bay. The northwest corner of the building has a door in each bay accessing a metal fire escape attached to the exterior. The roof is flat with membrane cladding. The ca 1933-48 one-story addition on the west end of the mill features a concrete floor, concrete supports, and a concrete ceiling. However, the walls are seven-course American bond brick construction. It has a large loading door on the north and south sides and is topped by a huge circular corrugated metal storage tower on the south side which is connected to the later Peanut Sorter. The north side is topped by multiple rusted metal tanks which appear to have been used to load train cars.

- H) Warehouse 9, ca 1956 C (building):** This single-story building is also seven course American bond brick construction with a loading door on the north and south sides and a raised poured concrete foundation which creates a water table on the exterior. The southwestern end of the warehouse is connected to the Commodity Warehouse A via a large corrugated metal structure which covers concrete loading pads likely for loading trucks. The roof is a shallow gable with a central penthouse, stepped parapets on the west and east ends with rolled asphalt cladding.
- I) Peanut Sorter, ca 1972 NC (structure):** This large metal structure encompasses elements which connect to the mill, the mill addition, Warehouse 9, the former boiler house and power plant building, and Commodity Warehouse A. It served to move product between buildings during processing and also likely for loading finished product onto trucks.
- J) Warehouse 10, ca 1920 C (building)**
- K) Warehouse 11, ca 1920 C (building):** These two warehouses were constructed at the same time and share a central wall. They feature seven-course American bond construction with regular openings below the floor level providing exterior access to a crawl space and likely brick pier foundation. There is a loading door for each on the south and north sides. The two end and central walls feature stepped parapets at the roof level. The roofs of both warehouses have collapsed and the interiors were inaccessible; however the walls are intact on all sides.
- L) Shop Warehouse, ca 1976 NC (building):** This is a simple corrugated metal workshop for the facility which was added onto the western end of the warehouses running along

The Suffolk Peanut Company
Name of Property

City of Suffolk, VA
County and State

the railroad lines. It features a poured concrete foundation and a shallow gable roof with membrane cladding.

- M) Central Warehouse, 1928 C (building):** This large, single-story trapezoidal shaped warehouse features seven-course American bond brick construction and regular openings below the floor level providing exterior access to the crawl space and brick pier foundation. The roof is a shallow gable with stepped parapets at the north and south ends and is clad with standing seam metal. There is a pair of loading doors on the south end which face the railroad spur. There are also two loading doors on the north side which abut the covered concrete loading platform. There is also an historic "Federal-State Inspection Office" in the northwest corner of this warehouse with an exterior entry door accessed by brick steps covered by a small gabled roof. The interior of the office features historic woodwork with later paneling. Most of the metal jalousie windows are intact. The interior also features exposed brick and wood floors. The exterior walls which face the warehouse interior are bead board and weatherboard. The exterior entry door features three wood panels on the lower half and three horizontal glass panes on the top half.
- N) Old Scales Office, ca 1937, C (building):** This six-sided, one-story single room building is constructed of concrete block with a concrete foundation, featuring a running bond brick veneer with pigeon-hole corners. It has a frame construction shed roof sloping from front to back and covered in standing seam metal with exposed rafter tails on the front. There are single-leaf doors on the north and south sides with three wood panels on the bottom half and a four panes on the top half. The sides each feature a nine-light fixed metal windows with a lower hopper section, while the window on the façade is a sixteen-light fixed metal window with a central four-light hopper.
- O) Boiler House & Power Plant Building, ca 1937 C (building):** This two-story building has three bays, divided by interior walls. The roof is sloped, divided by brick parapets between each bay and clad in rusted standing seam metal. The northernmost bay ceiling has partially collapsed and the other two bays were inaccessible. The remaining ceiling features wood joists supporting wood roof planks. The north bay was used for processing and features a huge metal sorting machine. The building features seven-course American bond brick construction with exposed brick interior walls and a poured concrete floor. An historic two-panel wood door and a large bead board door are present. There are single-story corrugated metal shed-roofed additions on the east and north sides of the building.
- P) Main Office, ca 1980 NC (building):** This small building is a simple one-story side gabled office with a single-bay, off center, front-gabled entry porch. It is wood frame construction with brick siding, poured concrete foundation, and the roof has asphalt

The Suffolk Peanut Company
Name of Property

City of Suffolk, VA
County and State

shingles. There are multiple six-over-six vinyl double hung windows. There is also a side entry on the east with a matching porch.

- Q) Commodity Warehouse A, ca 1972 NC (building):** This is the most recent of the very large corrugated-metal-clad storage warehouses. This warehouse features a poured concrete foundation and a square footprint. The hipped roof has a conveyor connected to the large Peanut Sorter at its peak. There is a large, central loading door large enough for vehicle access featuring a metal roll-up door on the north end. The interior has steel framing which forms the skeleton for the entire building and to which the exterior vertical metal cladding is attached, including covering the roof.
- R) Commodity Warehouse B, ca 1963 C (building):** This is the oldest of the three large commodity storage warehouses. It features a rectangular footprint with a front gable design and is also covered in vertical corrugated metal, including the roof. The foundation is poured concrete. There is a corrugated metal three-part addition on the north end which houses part of the peanut conveyor which connects this warehouse with Commodity Warehouse C. The interior features an elaborate steel framing system as well as two rows of skylights on both sides of the ceiling. There is an off center loading opening with a metal roll-up door on the north end.
- S) Commodity Warehouse C, ca 1969 NC (building):** This warehouse is a rectangular front gable building which features horizontal corrugated metal exterior siding on the sides and vertical metal siding on the ends and sides of the gabled roof. The foundation is poured concrete and there is a central loading opening with a metal roll-up door on the north end. The interior features a steel framing system and a single row of skylights on each side of the gabled ceiling.
- T) Cold Storage Warehouse, ca 1932, 1950 addition C (building):** This is a two-story, seven-course American bond brick construction warehouse with a shallow gabled roof with stepped parapets at each end. There is a loading door on the west and north sides and the floor is poured concrete. The addition is built with a concrete framing system (similar in appearance to the mill) which forms an exterior grid with brick veneer filling each section. It is five bays on the north and south ends and six bays on the west and east sides. There is a covered poured concrete loading platform along the west and northern sides. The interior of the original warehouse has wood posts and large wood beams supporting wood subflooring for the second floor. Some wood posts have been replaced by metal posts. There is an historic elevator on the north side of the building. The addition's interior has concrete posts which expand at the top to large concrete pads which support the second story. Both sections feature flat, membrane clad roofs.

The Suffolk Peanut Company
Name of Property

City of Suffolk, VA
County and State

- U) Grading Warehouse (with addition), ca 1976 NC (building):** This building is a long, single-story rectangle with a concrete block foundation and corrugated metal siding and roof covering. The eastern side may have the foundation of an earlier warehouse. There is a gabled roof on the older and newer sections. There is also a two-story peanut sorter on the north side of the warehouse.
- V) Truck Scales, ca 1980 NC (structure):** This consists of an in-ground concrete pad with a small concrete block weigh station.
- W) Sampling Station, ca 1981 NC (building):** This is a two-bay, two-story steel frame building with corrugated metal siding on the upper level and membrane cladding on the flat roof. The lower level consists of a poured concrete foundation and access for vehicles to pull in below the upper levels to receive product.

The Suffolk Peanut Company
Name of Property

City of Suffolk, VA
County and State

8. Statement of Significance

Applicable National Register Criteria

(Mark "x" in one or more boxes for the criteria qualifying the property for National Register listing.)

- A. Property is associated with events that have made a significant contribution to the broad patterns of our history.
- B. Property is associated with the lives of persons significant in our past.
- C. Property embodies the distinctive characteristics of a type, period, or method of construction or represents the work of a master, or possesses high artistic values, or represents a significant and distinguishable entity whose components lack individual distinction.
- D. Property has yielded, or is likely to yield, information important in prehistory or history.

Criteria Considerations

(Mark "x" in all the boxes that apply.)

- A. Owned by a religious institution or used for religious purposes
- B. Removed from its original location
- C. A birthplace or grave
- D. A cemetery
- E. A reconstructed building, object, or structure
- F. A commemorative property
- G. Less than 50 years old or achieving significance within the past 50 years

The Suffolk Peanut Company
Name of Property

City of Suffolk, VA
County and State

Areas of Significance

(Enter categories from instructions.)

INDUSTRY

TRANSPORTATION

ARCHITECTURE

Period of Significance

1903-1968

Significant Dates

1903, c1907, c1913,

c1920, 1928, 1932,

c1937, c1948,

1950, 1956, 1963, 1968

Significant Person

(Complete only if Criterion B is marked above.)

N/A

Cultural Affiliation

N/A

Architect/Builder

Saville and Williamson, Inc. (consulting engineers)

Breeden, Alexander Dupre (architect)

The Suffolk Peanut Company
Name of Property

City of Suffolk, VA
County and State

Statement of Significance Summary Paragraph (Provide a summary paragraph that includes level of significance, applicable criteria, justification for the period of significance, and any applicable criteria considerations.)

The Suffolk Peanut Company constitutes what is likely the largest and most intact surviving historic peanut processing complex in Virginia. The Suffolk Peanut Company was the first successful peanut company in the region and many of the resources in the current complex date to within a few years of the founding of the company in 1898. The warehouses and processing buildings represent the full range of functions historically associated with the site and result in a property with a high degree of integrity and significance. The Suffolk Peanut Company is eligible for the Virginia Landmarks Register and National Register of Historic Places at the statewide level of significance. It meets Criterion A for Industry as a rare intact peanut processing facility and representative of an industry which once dominated the economy of southeast Virginia. It meets Criterion A for Transportation with the two pronged railroad spur and long loading dock abutting the historic Norfolk & Western railroad line, showing the very close relationship between industry and rail transportation in the late nineteenth and twentieth centuries. Finally, it is locally significant under Criterion C in the area of Architecture as an outstanding example of an intact peanut processing facility with numerous early architectural resources that retain a high degree of physical integrity. The period of significance runs from 1903, the date of the earliest extant resource, Warehouse #3, to 1968 when the facility was sold to Goldkist Inc., ending its link to the historically important Suffolk Peanut Company.

Narrative Statement of Significance (Provide at least **one** paragraph for each area of significance.)

Peanut History in Southeast Virginia, Nansemond County, and the City of Suffolk

The first commercial production of peanuts in the United States is believed to have been accomplished by Dr. Matthew Harris near Waverly, Virginia, in 1844. But it was after the Civil War that the peanut soared in popularity nationally. By the late nineteenth century the “Virginia peanut” had become the most popular type in the country. To improve marketing and profits, peanuts also began to be graded: in 1877 peanuts were sold as fancy, prime, ordinary, and inferior. Buyers wanted uniformity in peanut purchases. Cleaning and shelling peanuts also improved marketability. Initially much of this was done by hand, often by African American workers, but much of the process was standardized and mechanized in large facilities, like the Suffolk Peanut Company. The peanuts would arrive onsite and be stored in a warehouse before being moved to hoppers to be graded by color and size. When ready for processing they would be moved to the mill, which was often five stories for each different machine in the process. First was the stemming machine which removed what the pickers has missed. Fans removed the stems as well as light nuts, with heavier ones continuing to the next floor. The next step was cylindrical drums which tumble the nuts to polish them, with the dust being suctioned out. The peanuts are separated by size and moved to a conveyor belt in the picking room where workers removed any faulty nuts or debris missed by the earlier steps.ⁱ

The late nineteenth century began to see the creation of several hundred new uses for peanuts and their various parts, including peanut butter in 1904. Other products included various candies,

The Suffolk Peanut Company
Name of Property

City of Suffolk, VA
County and State

soap, lubricating oil, oil for other food products, cosmetics, cooking, fertilizer, paints, flour for diabetics, hog feed, and wood preservers. Eight counties in southeast Virginia produced almost all of the state's peanut crop thanks to demand, soil, and climate. Coupled with the eight northeastern North Carolina counties, the region became known as the "Virginia-Carolina peanut belt," and Suffolk processed much of this production. By 1881 Virginia supplied a majority of the northeast peanut market. Ironically, it was Norfolk during the latter half of the nineteenth century which was the leading producer and was known as "Peanut City." Being near the peanut farms and being the hub for six railroad lines which stretched to all areas of the region, helped Suffolk surpass Norfolk in peanut processing and easily export its products. By 1902 ten of the twenty factories in the country devoted to "cleaning, sorting, grading, and bleaching of peanuts" were located in southeast Virginia, particularly Suffolk.ⁱⁱ

Another factor in the rise of Suffolk in the peanut industry was the production of the Benthall Peanut Picker. This was the first successful commercial peanut threshing machine. It was invented by Jesse Thomas Benthall and Finton Finley Ferguson and patented in 1905. In 1906 Benthall opened the Benthall Machine Company in Suffolk to mass produce his new machine. Suffolk had become the epicenter of nearly all aspects of the peanut industry.ⁱⁱⁱ

History of the Suffolk Peanut Company

John Y. King and Colonel John B. Pinner formed the Suffolk Peanut Company on January 20, 1898, with \$5,000 invested by each partner and \$2,000 in citizen subscriptions. Pinner, an attorney and realtor, initiated the creation of the company and was its first president. King was invited to be his partner because of King's experience running a small peanut cleaning plant in Windsor, Virginia. The Suffolk Peanut Company was the first peanut business in Suffolk to be successful after the Farmers Alliance of Nansemond County opened the first peanut cleaning, grading, and shelling mill in 1890, which soon failed. This was the beginning of what would eventually make Suffolk the largest peanut market in the world, the "Peanut Capital." The Suffolk Peanut Company initially leased an abandoned cotton mill in Suffolk before building their first plant in 1903 along the vital Norfolk & Western railroad tracks. King used a new approach to marketing by establishing a network of motivated salesmen to take his peanuts to outlets across the country, as well as Canada and Mexico. The company was also the first to ship a jobber (wholesale merchant) car load of raw peanuts. King left the company in 1908 to form the John King Peanut Co., and was replaced by A.T. Holland. A larger mill was constructed in 1909 along with several warehouses. By 1915 the company employed 200-300 workers and 15 office staff and produced up to ten train-car loads of Virginia and Spanish peanuts each day. The 1909 mill burned in September 1931 and was replaced by the current mill building which opened on March 14, 1932. As late as 1958 the Suffolk Peanut Company facility was called the best equipped single unit mill in the entire industry. It had the highest capacity and was as fireproof as was possible at the time. John Pinner died in 1938 and he was succeeded by his son.^{iv}

In 1900 the Bain Peanut Company of Wakefield, Virginia opened a large plant in Suffolk followed by Lummis and Company the same year. As happened later with the Suffolk Peanut Company, both of these early competitors saw fires destroy their initial facilities, which had to

The Suffolk Peanut Company
Name of Property

City of Suffolk, VA
County and State

be replaced. In 1904 the Columbian Peanut Company opened a facility in Suffolk. Other companies soon arrived including Shoop-Withers Company, Holland and Lee Company, the Tidewater Brokerage Company, the Old Reliable Peanut Company; Pond Brothers Peanut Co., and in 1913 the Planters Nut and Chocolate Company, which contributed more than any company to Suffolk's status as the "Peanut Capital." At least eight more companies related to one or more aspects of peanut production opened in Suffolk by 1939. By the middle of the twentieth century, peanuts were the leading cash crop in Suffolk and the surrounding counties.^v

Today the Suffolk Peanut Company facility is the largest and most intact historic peanut processing plant remaining in Suffolk and the surrounding counties, and perhaps the state. The former Lummis Peanut Company plant constructed on East Washington Street in Suffolk in 1901 has several large processing buildings. Like Suffolk Peanut Company, it was also later owned by Goldkist Inc. and then the Golden Peanut Company. While it was one of the four largest peanut companies in Suffolk when it opened, it no longer retains the number and variety of building types present at the Suffolk Peanut Company site. Additionally, it did not play quite the same prominent role in the development of the peanut industry in the City of Suffolk. The Birdsong Peanuts processing plant, on the outskirts of downtown Suffolk, is comparable to The Suffolk Peanut Company in size, but with many of its historic resources either lost or modernized. The Planter's plant is a completely modern facility.

National Register Significance

The Suffolk Peanut Company facility is eligible for listing on the National Register of Historic Places at the state level of significance under Criterion A in the areas of Industry and Transportation as the best remaining example of a peanut processing plant in southeast Virginia with intact historic resources that illustrate its reliance on rail transportation. It is eligible at the local level of significance under Criterion C in the area of Architecture with nearly every building type associated with the processing and storage of peanuts from the early-to-mid twentieth century represented in the complex, most exhibiting strong physical integrity. The period of significance is from 1903, the earliest documented resource, Warehouse #3, to 1968 when ownership passed from the Suffolk Peanut Company to Goldkist Peanuts.

The Suffolk Peanut Company
Name of Property

City of Suffolk, VA
County and State

9. Major Bibliographical References

Bibliography (Cite the books, articles, and other sources used in preparing this form.)

Brown, Parker E., "The development of the peanut industry in Nansemond County" (1940).
Honors Theses. Paper 288.

Burton, Ann H. Burton. History of Suffolk and Nansemond County Virginia. Suffolk, VA:
Phelps Ideas!, 1970.

Clark, Frances Watson. Suffolk and Nansemond County. Charleston, SC: Arcadia
Publishing, 2002.

Dunn, Joseph B. The History of Nansemond County Virginia. 1907.

Evans-Hylton, Patrick. The Suffolk Peanut Festival. Charleston, SC: Arcadia Publishing,
2004.

Hill's Suffolk (Nansemond County, VA.) City Directory (multiple).

Hobbs, Kermit and William A. Paquette. Suffolk: A Celebration of History. Virginia Beach,
VA: The Donning Company Publishers, 2006.

Humbert, Rueben Lee. Industrial Survey Suffolk, Virginia. Blacksburg, VA: Virginia
Polytechnic Institute, Engineering Extension Division, 1929.

Johnson, F. Roy. The Peanut Story. Murfreesboro, N.C.: 1977.

MacClenny, Wilbur E. History of the Peanut. Suffolk, VA: The Commercial Press, Inc.,
1935.

MacClenny, Wilbur E. *An Outline History of Nansemond County Virginia*.

Sanborn Insurance Company, *Sanborn Fire Insurance Maps*: 1889 #5; 1894 #3; 1898 #3,
#20; 1903 #3, #20; 1908 #22, #23; 1914 #27; 1921 #4; 1926 #36; 1949 #35, #36; 1972
#35, #36.

Smith, Andrew F. Peanuts, The Illustrious History of the Goober Pea. Urbana: University of
Illinois Press, 2002.

Suffolk-Nansemond Festival, 1608-1958, Suffolk-Nansemond Festival, Inc., 1958.

The Suffolk Peanut Company
Name of Property

City of Suffolk, VA
County and State

Suffolk-Nansemond Historical Society. Suffolk in Vintage Postcards. Charleston, SC:
Arcadia Publishing, 2003.

Previous documentation on file (NPS):

- preliminary determination of individual listing (36 CFR 67) has been requested
- previously listed in the National Register
- previously determined eligible by the National Register
- designated a National Historic Landmark
- recorded by Historic American Buildings Survey # _____
- recorded by Historic American Engineering Record # _____
- recorded by Historic American Landscape Survey # _____

Primary location of additional data:

- State Historic Preservation Office
 - Other State agency
 - Federal agency
 - Local government
 - University
 - Other
- Name of repository: Department of Historic Resources, Richmond, VA

Historic Resources Survey Number (if assigned): DHR No. 133-5568

10. Geographical Data

Acreege of Property 10.01

Use either the UTM system or latitude/longitude coordinates

Latitude/Longitude Coordinates

Datum if other than WGS84: _____

(enter coordinates to 6 decimal places)

- | | |
|-------------------------|----------------------|
| A. Latitude: -76.590740 | Longitude: 36.725110 |
| B. Latitude: -76.587660 | Longitude: 36.725640 |
| C. Latitude: -76.588070 | Longitude: 36.725250 |
| D. Latitude: -76.587420 | Longitude: 36.725350 |
| E. Latitude: -76.589980 | Longitude: 36.723330 |

The Suffolk Peanut Company
Name of Property

City of Suffolk, VA
County and State

F. Latitude: -76.590200 Longitude: 36.723670

G. Latitude: -76.591000 Longitude: 36.723990

Or

UTM References

Datum (indicated on USGS map):

NAD 1927 or NAD 1983

- | | | |
|----------|-----------|-----------|
| 1. Zone: | Easting: | Northing: |
| 2. Zone: | Easting: | Northing: |
| 3. Zone: | Easting: | Northing: |
| 4. Zone: | Easting : | Northing: |

Verbal Boundary Description (Describe the boundaries of the property.)

The boundaries of the Suffolk Peanut Company consist of two tax parcels: 34G23(A)*115A*1 and 34G23(A)*114*115*116 per the City of Suffolk Real Estate Assessor records. The wedge-shaped property is bounded by a Norfolk Southern Railroad line to the north, South Saratoga Street to the south, and Wellons Street to the west. A private parcel bounds the property to the southwest. The true and correct historic boundary is delineated on the attached Tax Parcel Map and Location Map which accompany this nomination.

Boundary Justification (Explain why the boundaries were selected.)

The boundary of this nomination only includes land, buildings, and structures which were owned by the Suffolk Peanut Company and includes two full tax parcels which comprise the current site. The boundaries encompass all of the known historic resources and the historic setting associated with the property.

11. Form Prepared By

name/title: Marcus R Pollard
organization: Commonwealth Preservation Group
street & number: PO Box 11083
city or town: Norfolk state: VA zip code: 23517
e-mail: marcus@commonwealthpreservationgroup.com
telephone: 757-651-0494
date: May 25, 2016

The Suffolk Peanut Company
Name of Property

City of Suffolk, VA
County and State

Additional Documentation

Submit the following items with the completed form:

- **Maps:** A **USGS map** or equivalent (7.5 or 15 minute series) indicating the property's location.
- **Sketch map** for historic districts and properties having large acreage or numerous resources. Key all photographs to this map.
- **Additional items:** (Check with the SHPO, TPO, or FPO for any additional items.)

Photographs

Submit clear and descriptive photographs. The size of each image must be 1600x1200 pixels (minimum), 3000x2000 preferred, at 300 ppi (pixels per inch) or larger. Key all photographs to the sketch map. Each photograph must be numbered and that number must correspond to the photograph number on the photo log. For simplicity, the name of the photographer, photo date, etc. may be listed once on the photograph log and doesn't need to be labeled on every photograph.

Photo Log

Name of Property: The Suffolk Peanut Company

City or Vicinity: City of Suffolk

County: N/A

State: VA

Photographer: Marcus Pollard

Date Photographed: 2.19.2016

Description of Photograph(s) and number, include description of view indicating direction of camera:

1 of 26: Peanut complex, west end, facing east

2 of 26: Oldest section of complex, along RR tracks, facing east

3 of 26: Peanut complex, east end, facing west

4 of 26: Mill, central warehouse, facing NE

The Suffolk Peanut Company
Name of Property

City of Suffolk, VA
County and State

- 5 of 26: Mill office
- 6 of 26: Mill, first floor, facing NW
- 7 of 26: Mill, fifth floor, facing east
- 8 of 26: Central warehouse, site of buried RR spur, facing NE
- 9 of 26: Cold storage warehouse, facing east
- 10 of 26: Cold storage warehouse interior, facing south
- 11 of 26: Covered walkway/loading dock running along RR tracks at north end of complex, facing west
- 12 of 26: Warehouse 3 interior, facing south
- 13 of 26: Warehouse 4 door, facing north
- 14 of 26: Warehouse 5, fourth floor, facing north
- 15 of 26: Warehouses 10 & 11, peanut sorter, facing NE
- 16 of 26: Old scales office, boiler and power house, facing SW
- 17 of 26: Commodity warehouse B, interior, facing south
- 18 of 26: Peanut sorter, central complex, facing west
- 19 of 26: Commodity warehouse C, facing east
- 20 of 26: Sampling station, Grading warehouse, facing east
- 21 of 26: Sampling station, Grading warehouse, complex boundary, facing north
- 22 of 26: Central warehouse, Mill, Warehouse 5, facing northwest
- 23 of 26: Warehouses 2-5, facing northwest
- 24 of 26: Warehouses 2-5, Peanut elevator, Mill, railroad track and loading dock, facing southwest
- 25 of 26: Warehouses 2-5, Peanut elevator, Mill, railroad track and loading dock, facing south

The Suffolk Peanut Company
Name of Property

City of Suffolk, VA
County and State

26 of 26: Mill, Warehouse 9, railroad track and loading dock, facing south

Paperwork Reduction Act Statement: This information is being collected for applications to the National Register of Historic Places to nominate properties for listing or determine eligibility for listing, to list properties, and to amend existing listings. Response to this request is required to obtain a benefit in accordance with the National Historic Preservation Act, as amended (16 U.S.C.460 et seq.).

Estimated Burden Statement: Public reporting burden for this form is estimated to average 100 hours per response including time for reviewing instructions, gathering and maintaining data, and completing and reviewing the form. Direct comments regarding this burden estimate or any aspect of this form to the Office of Planning and Performance Management, U.S. Dept. of the Interior, 1849 C. Street, NW, Washington, DC.

ENDNOTES

ⁱ Parker E Brown, *The Development of the peanut industry in Nansemond County*, Honors Thesis, 1940, p.16-17; Evans-Hylton, The Suffolk Peanut Festival, p.9-24; Johnson, The Peanut Story, p.87-89, 93-95, 140.

ⁱⁱ Rueben Lee Humbert, Suffolk, Virginia, Industrial Opportunity, Blacksburg, VA, 1929, p.23; Brown, *The Development of the peanut industry in Nansemond County*,p.21-22; Johnson, The Peanut Story, p.93-101, 137-141.

ⁱⁱⁱ Johnson, The Peanut Story, 129-136.

^{iv} *Suffolk-Nansemond Festival, 1608-1958*, Suffolk-Nansemond Festival, Inc., Suffolk, 1958, p.92-93; F. Roy Johnson, The Peanut Story, Murfreesboro, NC, 1966, p.143; Patrick Evans-Hylton, The Suffolk Peanut Festival, Charleston, SC, 2002, p.25-29.

^v Evans-Hylton, The Suffolk Peanut Festival, p.20, 28-34; Johnson, The Peanut Story, p.144-45.



LOCATION MAP

**Suffolk Peanut Company
City of Suffolk, VA**

Decimal Degrees:

A: X: -76.590740

Y: 36.725110

B: X: -76.587660

Y: 36.725640

C: X: -76.588070

Y: 36.725250

D: X: -76.587420

Y: 36.725350

E: X: -76.589980

Y: 36.723330

F: X: -76.590200

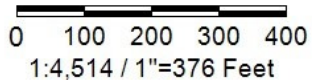
Y: 36.723670

G: X: -76.591000

Y: 36.723990



Feet



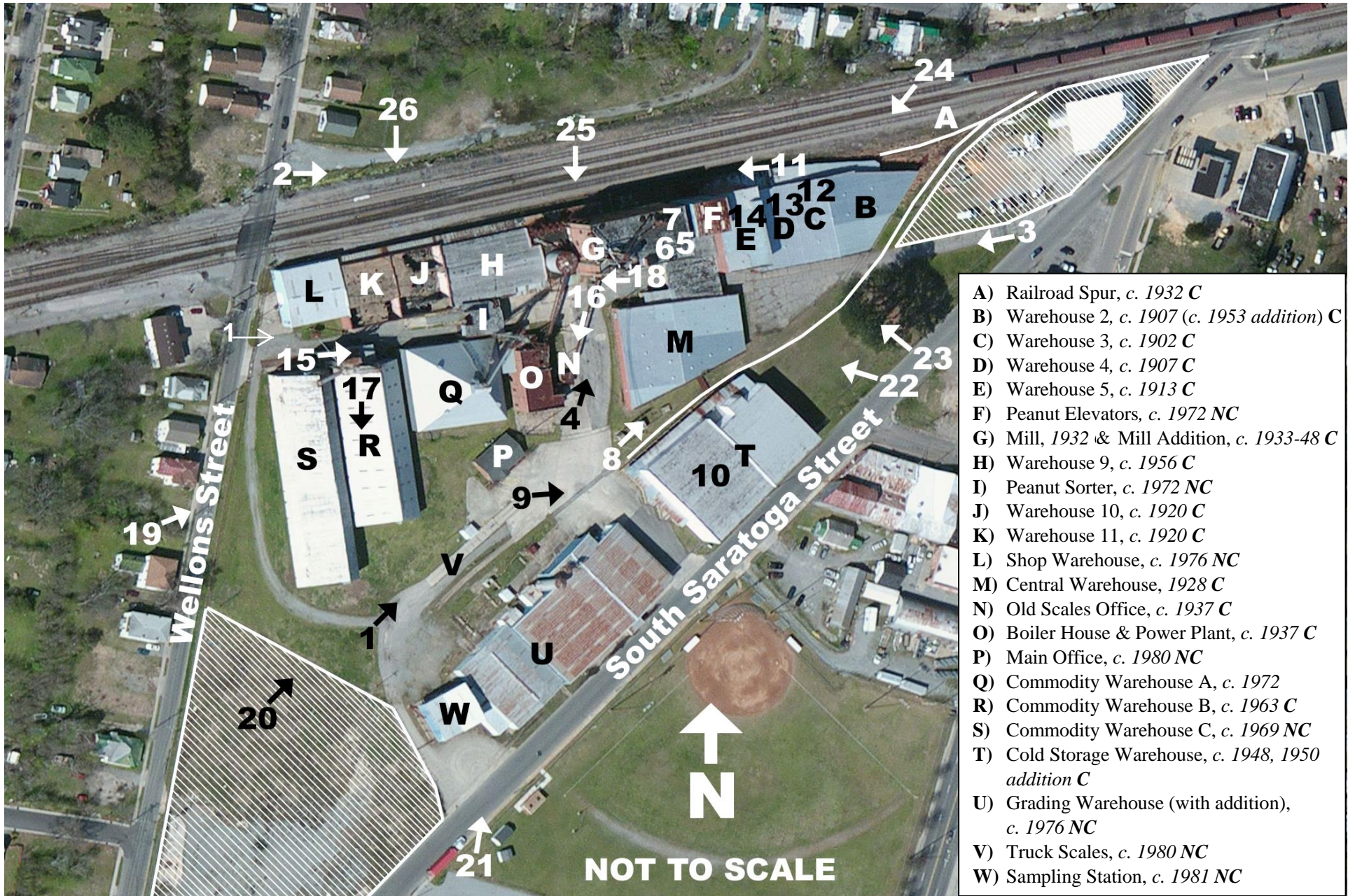
Title: Suffolk Peanut Co. Suffolk, VA. DHR# 133-5568.

Date: 5/26/2016

DISCLAIMER: Records of the Virginia Department of Historic Resources (DHR) have been gathered over many years from a variety of sources and the representation depicted is a cumulative view of field observations over time and may not reflect current ground conditions. The map is for general information purposes and is not intended for engineering, legal or other site-specific uses. Map may contain errors and is provided "as-is". More information is available in the DHR Archives located at DHR's Richmond office.

Notice if AE sites: Locations of archaeological sites may be sensitive the National Historic Preservation Act (NHPA), and the Archaeological Resources Protection Act (ARPA) and Code of Virginia §2.2-3705.7 (10). Release of precise locations may threaten archaeological sites and historic resources.

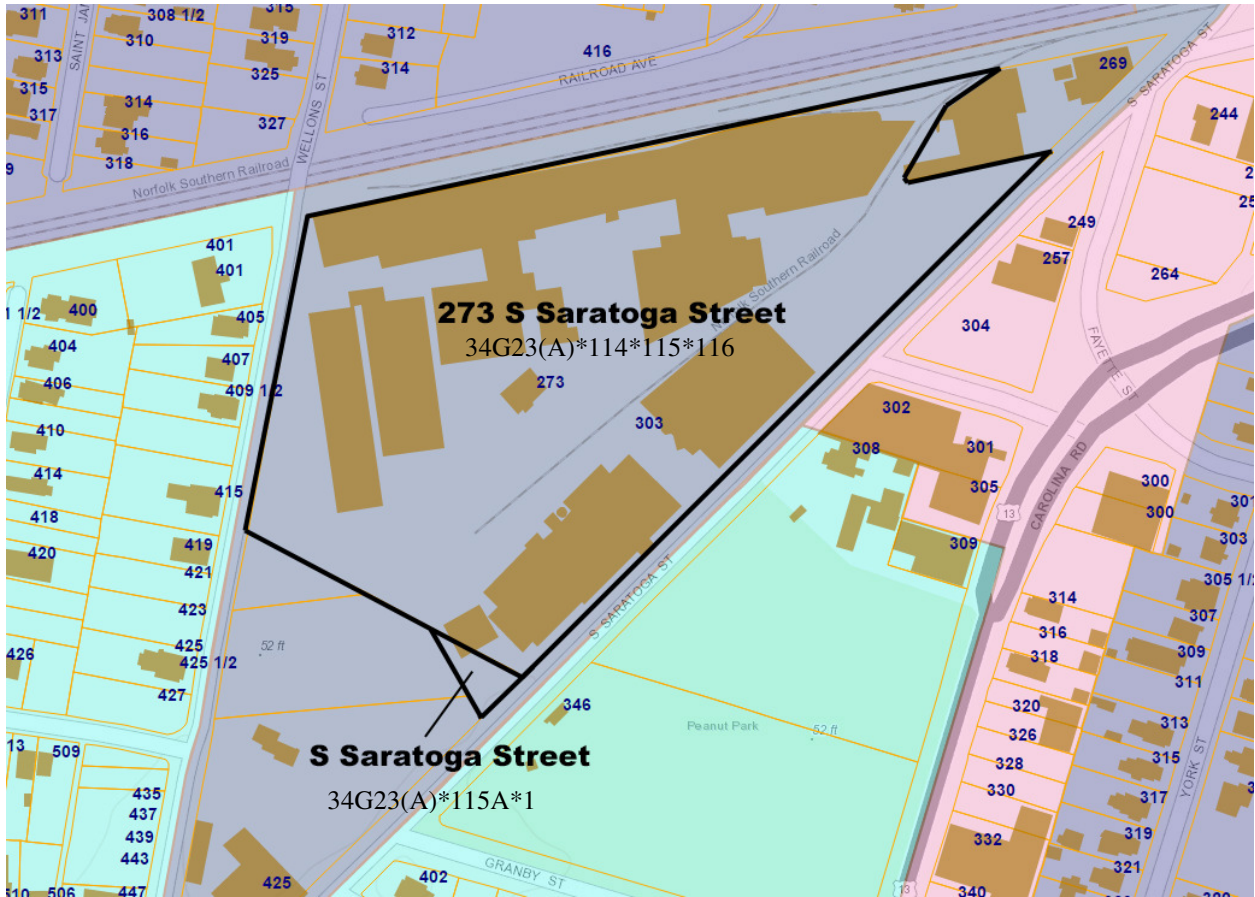
SKETCH MAP/ PHOTO KEY
Suffolk Peanut Company
 303 S. Saratoga Street, Suffolk, VA 23434
 DHR No. 133-5568



- A) Railroad Spur, c. 1932 C
- B) Warehouse 2, c. 1907 (c. 1953 addition) C
- C) Warehouse 3, c. 1902 C
- D) Warehouse 4, c. 1907 C
- E) Warehouse 5, c. 1913 C
- F) Peanut Elevators, c. 1972 NC
- G) Mill, 1932 & Mill Addition, c. 1933-48 C
- H) Warehouse 9, c. 1956 C
- I) Peanut Sorter, c. 1972 NC
- J) Warehouse 10, c. 1920 C
- K) Warehouse 11, c. 1920 C
- L) Shop Warehouse, c. 1976 NC
- M) Central Warehouse, 1928 C
- N) Old Scales Office, c. 1937 C
- O) Boiler House & Power Plant, c. 1937 C
- P) Main Office, c. 1980 NC
- Q) Commodity Warehouse A, c. 1972
- R) Commodity Warehouse B, c. 1963 C
- S) Commodity Warehouse C, c. 1969 NC
- T) Cold Storage Warehouse, c. 1948, 1950 addition C
- U) Grading Warehouse (with addition), c. 1976 NC
- V) Truck Scales, c. 1980 NC
- W) Sampling Station, c. 1981 NC

TAX PARCEL MAP
Suffolk Peanut Company
City of Suffolk, VA
DHR No. 133-5568

Parcels within nomination boundary are 34G23(A)*114*115*116 and 34G23(A)*115A*1























































UNITED STATES DEPARTMENT OF THE INTERIOR
NATIONAL PARK SERVICE

NATIONAL REGISTER OF HISTORIC PLACES
EVALUATION/RETURN SHEET

REQUESTED ACTION: NOMINATION

PROPERTY NAME: Suffolk Peanut Company, The

MULTIPLE NAME:

STATE & COUNTY: VIRGINIA, Suffolk

DATE RECEIVED: 10/07/16 DATE OF PENDING LIST:
DATE OF 16TH DAY: DATE OF 45TH DAY: 11/22/16
DATE OF WEEKLY LIST:

REFERENCE NUMBER: 16000801

REASONS FOR REVIEW:

APPEAL: N DATA PROBLEM: N LANDSCAPE: N LESS THAN 50 YEARS: N
OTHER: N PDIL: N PERIOD: N PROGRAM UNAPPROVED: N
REQUEST: N SAMPLE: N SLR DRAFT: N NATIONAL: N

COMMENT WAIVER: N

ACCEPT RETURN REJECT 2016-11-22 DATE

ABSTRACT/SUMMARY COMMENTS:

Entered in
The National Register
of
Historic Places

RECOM./CRITERIA _____

REVIEWER _____ DISCIPLINE _____

TELEPHONE _____ DATE _____

DOCUMENTATION see attached comments Y/N see attached SLR Y/N

If a nomination is returned to the nominating authority, the nomination is no longer under consideration by the NPS.



CITY OF SUFFOLK

442 W. WASHINGTON ST., P.O. BOX 1858, SUFFOLK, VIRGINIA 23439-1858
PHONE: (757) 514-4060 FAX: (757) 514-4099

DEPARTMENT OF
PLANNING & COMMUNITY DEVELOPMENT

Division of Planning

September 12, 2016

Mr. James Hare
Director, Survey and Register Division
Commonwealth of Virginia
Department of Historic Resources
2801 Kensington Avenue
Richmond, VA 23221

RE: National Register Nomination, The Suffolk Peanut Company, Suffolk, Virginia

Dear Mr. Hare:

In regard to the above referenced project, the City of Suffolk is pleased to offer the following comments in support of the nomination of the Suffolk Peanut Company to the National Register of Historic Places and the Virginia Landmarks Register.

As noted in the provided statement of significance, Suffolk has a long history tied to the production and processing of peanuts. That relationship remains important to the City and continues to this day. The Suffolk Peanut Company facility serves as evidence of this historical relationship, and the site enjoys a prominent location in close proximity to downtown and many of the City's existing historic districts. The Suffolk Peanut Company site is recognizable for its substantial historic structures and could also offer one of the best opportunities for adaptive reuse of an important site to the City. Although idle now, it is our hope that this site will find new life and continue to illustrate the evolution and worth of a well-known and cherished industry to Suffolk.

Again, the City of Suffolk is pleased to support the nomination of the Suffolk Peanut Company to the National Register of Historic Places and the Virginia Landmarks Register. If you have any questions concerning these comments, please do not hesitate to contact me at cljones@suffolkva.us or (757) 514-4063.

Sincerely,

Claire Jones, AICP
Secretary, Suffolk Historic Landmarks Commission

Cc: Scott Mills, AICP, Deputy City Manager



COMMONWEALTH of VIRGINIA

Department of Historic Resources

2801 Kensington Avenue, Richmond, Virginia 23221



Molly Joseph Ward
Secretary of Natural Resources

Julie V. Langan
Director

Tel: (804) 367-2323
Fax: (804) 367-2391
www.dhr.virginia.gov

September 28, 2016

Mr. Paul Loether
Chief, National Register of Historic Places and National Historic Landmarks Programs
National Park Service 2280
National Register of Historic Places
1201 I ("Eye") Street, N.W.
Washington D.C. 20005

Re: The Suffolk Peanut Company, City of Suffolk, Virginia

Dear Mr. Loether:

The enclosed disk contains the true and correct copy of the nomination for The Suffolk Peanut Company to the National Register of Historic Places. Submitted for your review, the nomination has been considered, and approved, by the State Review Board and the Virginia SHPO has recommended it for listing. Any letters of comment or objection have been copied at the end of the nomination material, along with any FPO notification letters.

Should you have any questions, please do not hesitate to contact me. My direct phone line is 804-482-6439.

Sincerely,

Lena Sweeten McDonald
National/State Register Historian

Enclosures

Western Region Office
962 Kime Lane
Salem, VA 24153
Tel: (540) 387-5443
Fax: (540) 387-5446

Northern Region Office
5357 Main Street
PO Box 519
Stephens City, VA 22655
Tel: (540) 868-7029
Fax: (540) 868-7033

Eastern Region Office
2801 Kensington Avenue
Richmond, VA 23221
Tel: (804) 367-2323
Fax: (804) 367-2391