



UNITED STATES DEPARTMENT OF THE INTERIOR
NATIONAL PARK SERVICE

NATIONAL REGISTER OF HISTORIC PLACES
PROPERTY PHOTOGRAPH FORM

FOR NPS USE ONLY

RECEIVED APR 14 1975

DATE ENTERED APR 21 1975

SEE INSTRUCTIONS IN *HOW TO COMPLETE NATIONAL REGISTER FORMS*
TYPE ALL ENTRIES -- ENCLOSE WITH PHOTOGRAPH

1 NAME

HISTORIC Southern Pacific Railroad Company's Sacramento Depot

AND/OR COMMON

2 LOCATION

CITY, TOWN Sacramento VICINITY OF COUNTY Sacramento STATE California

3 PHOTO REFERENCE

PHOTO CREDIT Ken Stroth (private photographer) DATE OF PHOTO October 1974

NEGATIVE FILED AT
Sacramento Historic Landmarks Commission, 1007-7th Street, Sacramento, CA

4 IDENTIFICATION

DESCRIBE VIEW, DIRECTION, ETC. IF DISTRICT, GIVE BUILDING NAME & STREET

PHOTO NO

Aerial front view of terminal and parking area looking north

10812



UNITED STATES DEPARTMENT OF THE INTERIOR
NATIONAL PARK SERVICE

NATIONAL REGISTER OF HISTORIC PLACES
PROPERTY PHOTOGRAPH FORM

FOR NPS USE ONLY

RECEIVED APR 14 1975

DATE ENTERED APR 21 1975

SEE INSTRUCTIONS IN *HOW TO COMPLETE NATIONAL REGISTER FORMS*
TYPE ALL ENTRIES -- ENCLOSE WITH PHOTOGRAPH

1 NAME

HISTORIC Southern Pacific Railroad Company's Sacramento Depot

AND/OR COMMON

2 LOCATION

CITY, TOWN Sacramento

___VICINITY OF

COUNTY Sacramento

STATE California

3 PHOTO REFERENCE

PHOTO CREDIT Ken Stroth (private photographer)

DATE OF PHOTO October 1974

NEGATIVE FILED AT

Sacramento Historic Landmarks Commission, 1007-7th Street, Sacramento, CA

4 IDENTIFICATION

DESCRIBE VIEW, DIRECTION, ETC. IF DISTRICT, GIVE BUILDING NAME & STREET

PHOTO NO

Looking northeast at terminal's office wing

#2012



UNITED STATES DEPARTMENT OF THE INTERIOR
NATIONAL PARK SERVICE

**NATIONAL REGISTER OF HISTORIC PLACES
PROPERTY PHOTOGRAPH FORM**

FOR NPS USE ONLY
RECEIVED APR 14 1975
APR 21 1975
DATE ENTERED

SEE INSTRUCTIONS IN *HOW TO COMPLETE NATIONAL REGISTER FORMS*
TYPE ALL ENTRIES -- ENCLOSE WITH PHOTOGRAPH

1 NAME

HISTORIC Southern Pacific Railroad Company's Sacramento Depot

AND/OR COMMON

2 LOCATION

CITY, TOWN Sacramento _____ VICINITY OF COUNTY Sacramento STATE California

3 PHOTO REFERENCE

PHOTO CREDIT Ken Stroth (private photographer) DATE OF PHOTO October 1974

NEGATIVE FILED AT Sacramento Historic Landmarks Commission, 1007-7th Street, Sacramento, CA

4 IDENTIFICATION

DESCRIBE VIEW, DIRECTION, ETC. IF DISTRICT, GIVE BUILDING NAME & STREET

PHOTO NO.

Overall view of terminal looking west along "I" Street

#3012



UNITED STATES DEPARTMENT OF THE INTERIOR
NATIONAL PARK SERVICE

**NATIONAL REGISTER OF HISTORIC PLACES
PROPERTY PHOTOGRAPH FORM**

FOR NPS USE ONLY	
RECEIVED	APR 14 1975
DATE ENTERED	APR 21 1975

SEE INSTRUCTIONS IN *HOW TO COMPLETE NATIONAL REGISTER FORMS*
TYPE ALL ENTRIES -- ENCLOSE WITH PHOTOGRAPH

1 NAME

HISTORIC Southern Pacific Railroad Company's Sacramento Depot

AND/OR COMMON

2 LOCATION

CITY, TOWN Sacramento VICINITY OF COUNTY Sacramento STATE California

3 PHOTO REFERENCE

PHOTO CREDIT Ken Stroth (private photographer) DATE OF PHOTO October 1974^o

NEGATIVE FILED AT Sacramento Historic Landmarks Commission, 1007-7th Street, Sacramento, CA

4 IDENTIFICATION

DESCRIBE VIEW, DIRECTION, ETC. IF DISTRICT. GIVE BUILDING NAME & STREET

PHOTO NO.

Looking east along terminal's main entrance

#4 0812

SOUTHERN · PACIFIC · LINES



UNITED STATES DEPARTMENT OF THE INTERIOR
NATIONAL PARK SERVICE

**NATIONAL REGISTER OF HISTORIC PLACES
PROPERTY PHOTOGRAPH FORM**

FOR NPS USE ONLY

RECEIVED APR 14 1975

DATE ENTERED APR 21 1975

SEE INSTRUCTIONS IN *HOW TO COMPLETE NATIONAL REGISTER FORMS*
TYPE ALL ENTRIES -- ENCLOSE WITH PHOTOGRAPH

1 NAME

HISTORIC Southern Pacific Railroad Company's Sacramento Depot

AND/OR COMMON

2 LOCATION

CITY, TOWN Sacramento VICINITY OF COUNTY Sacramento STATE California

3 PHOTO REFERENCE

PHOTO CREDIT Ken Stroth (private photographer) DATE OF PHOTO October 1974

NEGATIVE FILED AT Sacramento Historic Landmarks Commission, 1007-7th Street, Sacramento, CA

4 IDENTIFICATION

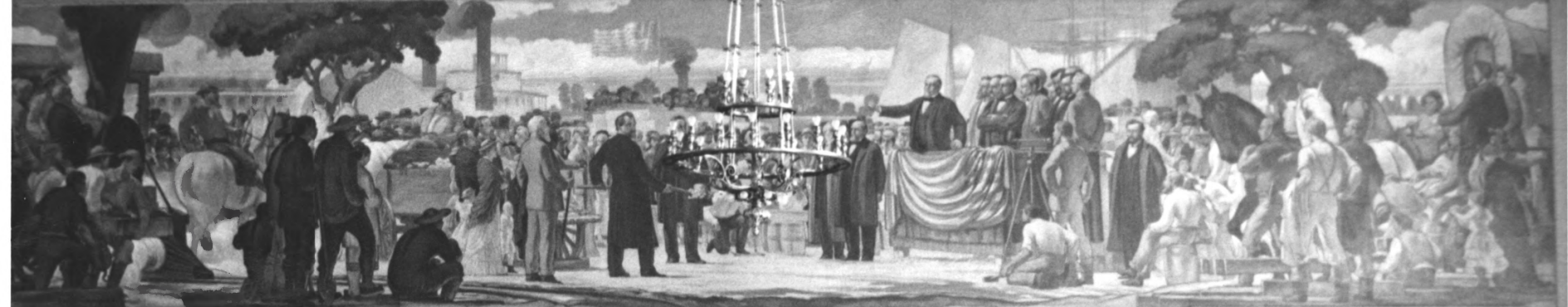
DESCRIBE VIEW, DIRECTION, ETC. IF DISTRICT. GIVE BUILDING NAME & STREET

PHOTO NO.

5912

Street level front view of terminal looking north

BREAKING GROUND AT SACRAMENTO JAN 8 1843 FOR FIRST TRANSCONTINENTAL RAILROAD



UNITED STATES DEPARTMENT OF THE INTERIOR
NATIONAL PARK SERVICE

NATIONAL REGISTER OF HISTORIC PLACES
PROPERTY PHOTOGRAPH FORM

FOR NPS USE ONLY

RECEIVED APR 14 1975

DATE ENTERED APR 21 1975

SEE INSTRUCTIONS IN HOW TO COMPLETE NATIONAL REGISTER FORMS
TYPE ALL ENTRIES -- ENCLOSE WITH PHOTOGRAPH

1 NAME

HISTORIC Southern Pacific Railroad Company's Sacramento Depot

AND/OR COMMON

2 LOCATION

CITY, TOWN Sacramento _____ VICINITY OF COUNTY Sacramento STATE California

3 PHOTO REFERENCE

PHOTO CREDIT Ken Stroth (private photographer) DATE OF PHOTO October 1974

NEGATIVE FILED AT Sacramento Historic Landmarks Commission, 1007-7th Street, Sacramento, CA

4 IDENTIFICATION

DESCRIBE VIEW, DIRECTION, ETC. IF DISTRICT, GIVE BUILDING NAME & STREET

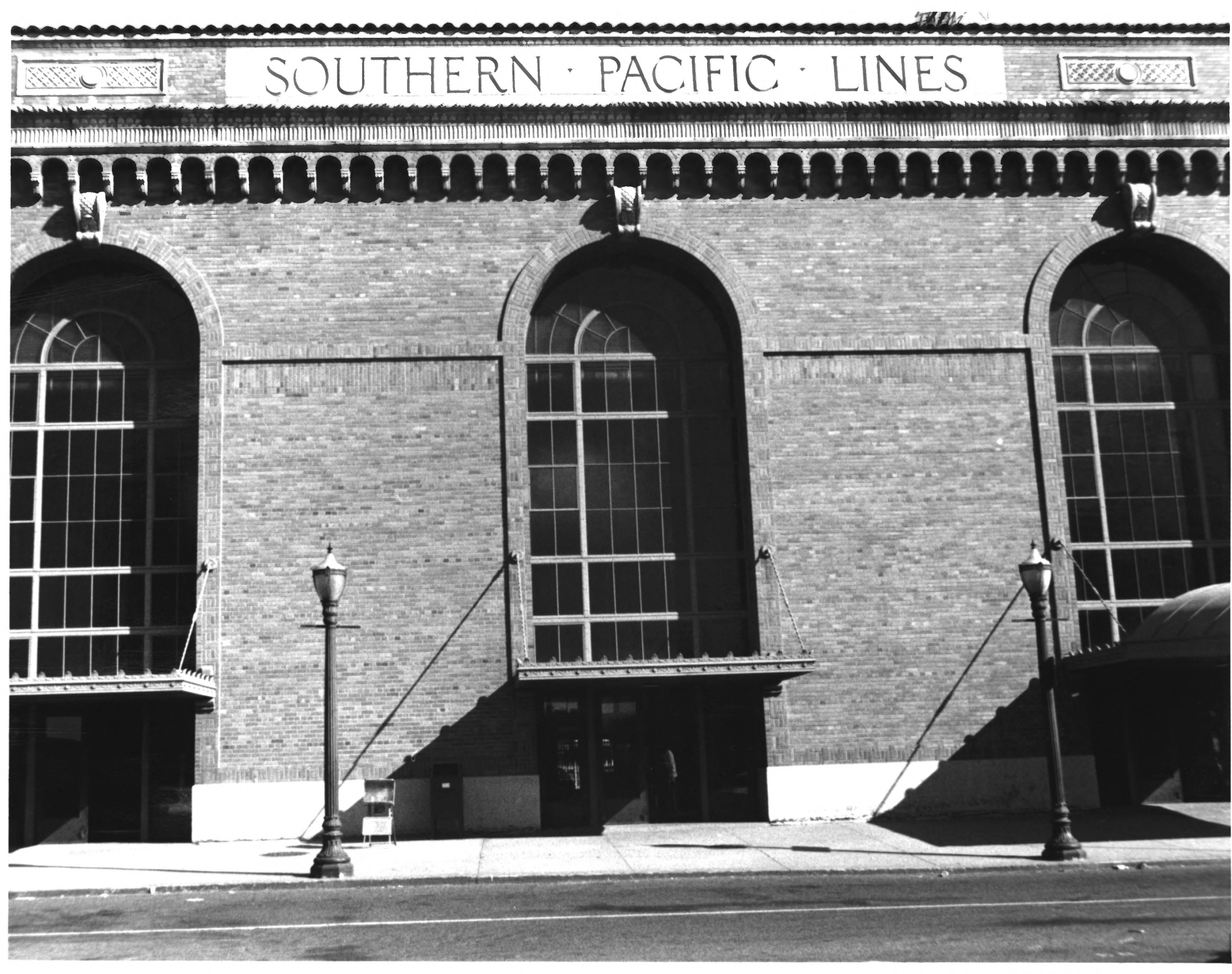
PHOTO NO.

Main terminal room looking east, note scene of early day
dedication ceremony, chandelier and terminal benches

INT: 2983-75

#60912

SOUTHERN · PACIFIC · LINES



UNITED STATES DEPARTMENT OF THE INTERIOR
NATIONAL PARK SERVICE

**NATIONAL REGISTER OF HISTORIC PLACES
PROPERTY PHOTOGRAPH FORM**

FOR NPS USE ONLY

APR 14 1975

RECEIVED

APR 21 1975

DATE ENTERED

SEE INSTRUCTIONS IN *HOW TO COMPLETE NATIONAL REGISTER FORMS*
TYPE ALL ENTRIES -- ENCLOSE WITH PHOTOGRAPH

1 NAME

HISTORIC Southern Pacific Railroad Company's Sacramento Depot

AND/OR COMMON

2 LOCATION

CITY, TOWN Sacramento

___ VICINITY OF

COUNTY Sacramento STATE California

3 PHOTO REFERENCE

PHOTO CREDIT Ken Stroth (private photographer)

DATE OF PHOTO October 1974

NEGATIVE FILED AT Sacramento Historic Landmarks Commission, 1007-7th Street, Sacramento, CA

4 IDENTIFICATION

DESCRIBE VIEW, DIRECTION, ETC. IF DISTRICT, GIVE BUILDING NAME & STREET

PHOTO NO.

A close-up view of terminal's main entrance looking north

7212



UNITED STATES DEPARTMENT OF THE INTERIOR
NATIONAL PARK SERVICE

**NATIONAL REGISTER OF HISTORIC PLACES
PROPERTY PHOTOGRAPH FORM**

FOR NPS USE ONLY	
RECEIVED	APR 14 1975
DATE ENTERED	APR 21 1975

SEE INSTRUCTIONS IN *HOW TO COMPLETE NATIONAL REGISTER FORMS*
TYPE ALL ENTRIES -- ENCLOSE WITH PHOTOGRAPH

1 NAME

HISTORIC Southern Pacific Railroad Company's Sacramento Depot

AND/OR COMMON

2 LOCATION

CITY, TOWN Sacramento

____VICINITY OF

COUNTY Sacramento

STATE California

3 PHOTO REFERENCE

PHOTO CREDIT Ken Stroth (private photographer)

DATE OF PHOTO October 1974

NEGATIVE FILED AT Sacramento Historic Landmarks Commission, 1007-7th Street, Sacramento, CA

4 IDENTIFICATION

DESCRIBE VIEW, DIRECTION, ETC. IF DISTRICT, GIVE BUILDING NAME & STREET

PHOTO NO

Looking east along tracks and debarkation platforms

8 02 12



BAGGAGE ROOM

NO PARKING
LOADING ZONE



UNITED STATES DEPARTMENT OF THE INTERIOR
NATIONAL PARK SERVICE

**NATIONAL REGISTER OF HISTORIC PLACES
PROPERTY PHOTOGRAPH FORM**

FOR NPS USE ONLY

RECEIVED APR 14 1975

DATE ENTERED APR 21 1975

SEE INSTRUCTIONS IN *HOW TO COMPLETE NATIONAL REGISTER FORMS*
TYPE ALL ENTRIES -- ENCLOSE WITH PHOTOGRAPH

1 NAME

HISTORIC Southern Pacific Railroad Company's Sacramento Depot

AND/OR COMMON

2 LOCATION

CITY, TOWN Sacramento VICINITY OF COUNTY Sacramento STATE California

3 PHOTO REFERENCE

PHOTO CREDIT Ken Stroth (private photographer) DATE OF PHOTO October 1974

NEGATIVE FILED AT Sacramento Historic Landmarks Commission, 1007-7th Street, Sacramento, CA

4 IDENTIFICATION

DESCRIBE VIEW, DIRECTION, ETC. IF DISTRICT. GIVE BUILDING NAME & STREET

PHOTO NO.

Looking west at baggage room

#9012

TRACK 5

TRACK 4

EXIT

EXIT

EXIT ↓ EX

SACRAMENTO

EXIT



UNITED STATES DEPARTMENT OF THE INTERIOR
NATIONAL PARK SERVICE

**NATIONAL REGISTER OF HISTORIC PLACES
PROPERTY PHOTOGRAPH FORM**

FOR NPS USE ONLY
RECEIVED APR 14 1975
DATE ENTERED APR 21 1975

SEE INSTRUCTIONS IN *HOW TO COMPLETE NATIONAL REGISTER FORMS*
TYPE ALL ENTRIES -- ENCLOSE WITH PHOTOGRAPH

1 NAME

HISTORIC Southern Pacific Railroad Company's Sacramento Depot

AND/OR COMMON

2 LOCATION

CITY, TOWN Sacramento VICINITY OF COUNTY Sacramento STATE California

3 PHOTO REFERENCE

PHOTO CREDIT Ken Stroth (private photographer) DATE OF PHOTO October 1974

NEGATIVE FILED AT Sacramento Historic Landmarks Commission, 1007-7th Street, Sacramento, CA

4 IDENTIFICATION

DESCRIBE VIEW, DIRECTION, ETC. IF DISTRICT, GIVE BUILDING NAME & STREET

PHOTO NO.

Looking east at debarkation platform and exit ramp

#10 of 12



UNITED STATES DEPARTMENT OF THE INTERIOR
NATIONAL PARK SERVICE

**NATIONAL REGISTER OF HISTORIC PLACES
PROPERTY PHOTOGRAPH FORM**

FOR NPS USE ONLY
RECEIVED APR 14 1975
DATE ENTERED APR 21 1975

SEE INSTRUCTIONS IN *HOW TO COMPLETE NATIONAL REGISTER FORMS*
TYPE ALL ENTRIES -- ENCLOSE WITH PHOTOGRAPH

1 NAME

HISTORIC Southern Pacific Railroad Company's Sacramento Depot

AND/OR COMMON

2 LOCATION

CITY, TOWN Sacramento _____ VICINITY OF COUNTY Sacramento STATE California

3 PHOTO REFERENCE

PHOTO CREDIT Ken Stroth (private photographer) DATE OF PHOTO October 1974

NEGATIVE FILED AT Sacramento Historic Landmarks Commission, 1007-7th Street, Sacramento, CA

4 IDENTIFICATION

DESCRIBE VIEW, DIRECTION, ETC. IF DISTRICT, GIVE BUILDING NAME & STREET PHOTO NO

Terminal benches additionally function as heaters, note lower and upper grill assembly

#110812



UNITED STATES DEPARTMENT OF THE INTERIOR
NATIONAL PARK SERVICE

**NATIONAL REGISTER OF HISTORIC PLACES
PROPERTY PHOTOGRAPH FORM**

FOR NPS USE ONLY

RECEIVED APR 14 1975

DATE ENTERED APR 21 1975

SEE INSTRUCTIONS IN *HOW TO COMPLETE NATIONAL REGISTER FORMS*
TYPE ALL ENTRIES -- ENCLOSE WITH PHOTOGRAPH

1 NAME

HISTORIC Southern Pacific Railroad Company's Sacramento Depot

AND/OR COMMON

2 LOCATION

CITY, TOWN Sacramento VICINITY OF COUNTY Sacramento STATE California

3 PHOTO REFERENCE

PHOTO CREDIT Ken Stroth (private photographer) DATE OF PHOTO October 1974

NEGATIVE FILED AT Sacramento Historic Landmarks Commission, 1007-7th Street, Sacramento, CA

4 IDENTIFICATION

DESCRIBE VIEW, DIRECTION, ETC. IF DISTRICT, GIVE BUILDING NAME & STREET

PHOTO NO

Looking southwest from debarkation platform to rear of terminal

#12 812