



80-A-267

City Hall Park Historic District
Burlington, Vermont

Credit: John C. Page

Date: December, 1980

Negative Filed at Vermont Division for
Historic Preservation

Description: City Hall Park, looking northeast
from the corner of Main and St. Paul Streets

Photograph 1



80-A-267

City Hall Park Historic District

Burlington, Vermont

Credit: John C. Page

Date: December, 1980

Negative Filed at Vermont Division for
Historic Preservation

Description: City Hall Park, looking north
from the corner of Main and St. Paul Streets

Photograph 2



City Hall Park Historic District
Burlington, Vermont

Credit: Gina Campoli

Date: January, 1983

Negative Filed at Vermont Division for
Historic Preservation

Description: West side of Church Street,

(L to R) #'s 17, 11, 10, 9, 8

Photograph 3

83-A-2



City Hall Park Historic District
Burlington, Vermont

Credit: Gina Campoli

Date: January, 1983

Negative Filed at Vermont Division for
Historic Preservation

Description: South side of Main Street, (L to
R) #'s 17, 16, 15, 14, 13, 12
Photograph 4



267

17

City Hall Park Historic District
Burlington, Vermont

Credit: John C. Page

Date: December, 1980

Negative Filed at Vermont Division for
Historic Preservation

Description: West side of Church Street, (L to
R) #'s 24, 23, 22, 21, 20, 19, 18
Photograph 5



83-A-2

City Hall Park Historic District
Burlington, Vermont
Credit: Gina Campoli
Date: January, 1983
Negative Filed at Vermont Division for
Historic Preservation
Description: (L) Burlington Trust Company
Building, #2; (R) Second Merchants Bank, #1;
View looking Northwest
Photograph 6



83-A-2

City Hall Park Historic District

Burlington, Vermont

Credit: Gina Campoli

Date: January, 1983

Negative Filed at Vermont Division for
Historic Preservation

Description: (L) Burlington Savings Bank, #5;

(C) Burlington Savings Bank Annex, #4; (R)

Crispin Leather, #3; View looking Northeast
Photograph 7



77-A-178

City Hall Park Historic District
Burlington, Vermont
Credit: Mitchell Grubler
Date: June, 1977
Negative Filed at Vermont Division for
Historic Preservation
Description: Burlington Savings Bank, #5;
View looking Northeast
Photograph 8



80-A-268

9

City Hall Park Historic District

Burlington, Vermont

Credit: John C. Page

Date: December, 1980

Negative Filed at Vermont Division for

Historic Preservation

Description: St. Paul Street Annex of the
Burlington Savings Bank, #6; View looking
Northeast

Photograph 9



City Hall Park Historic District

Burlington, Vermont

Credit: Gina Campoli

Date: January, 1983

Negative Filed at Vermont Division for
Historic Preservation

Description: McAuliffe Building, #8; View
looking Southwest

Photograph 10



83-A-2

City Hall Park Historic District
Burlington, Vermont
Credit: Gina Campoli
Date: January, 1983
Negative Filed at Vermont Division for
Historic Preservation
Description: Merchants Bank, #9; View looking
Southwest
Photograph 11



83-A-2

City Hall Park Historic District

Burlington, Vermont

Credit: Gina Campoli

Date: January, 1983

Negative Filed at Vermont Division for
Historic Preservation

Description: City Hall, #11, Church Street
facade; View looking Northwest

Photograph 12



EAL Neutrogena Vitabath Cabochard

men's Inc. Lower Main Salon

131 ARK CENTER

LEFT LANE MUST TURN LEFT

City Hall Park Historic District

Burlington, Vermont

Credit: Gina Campoli

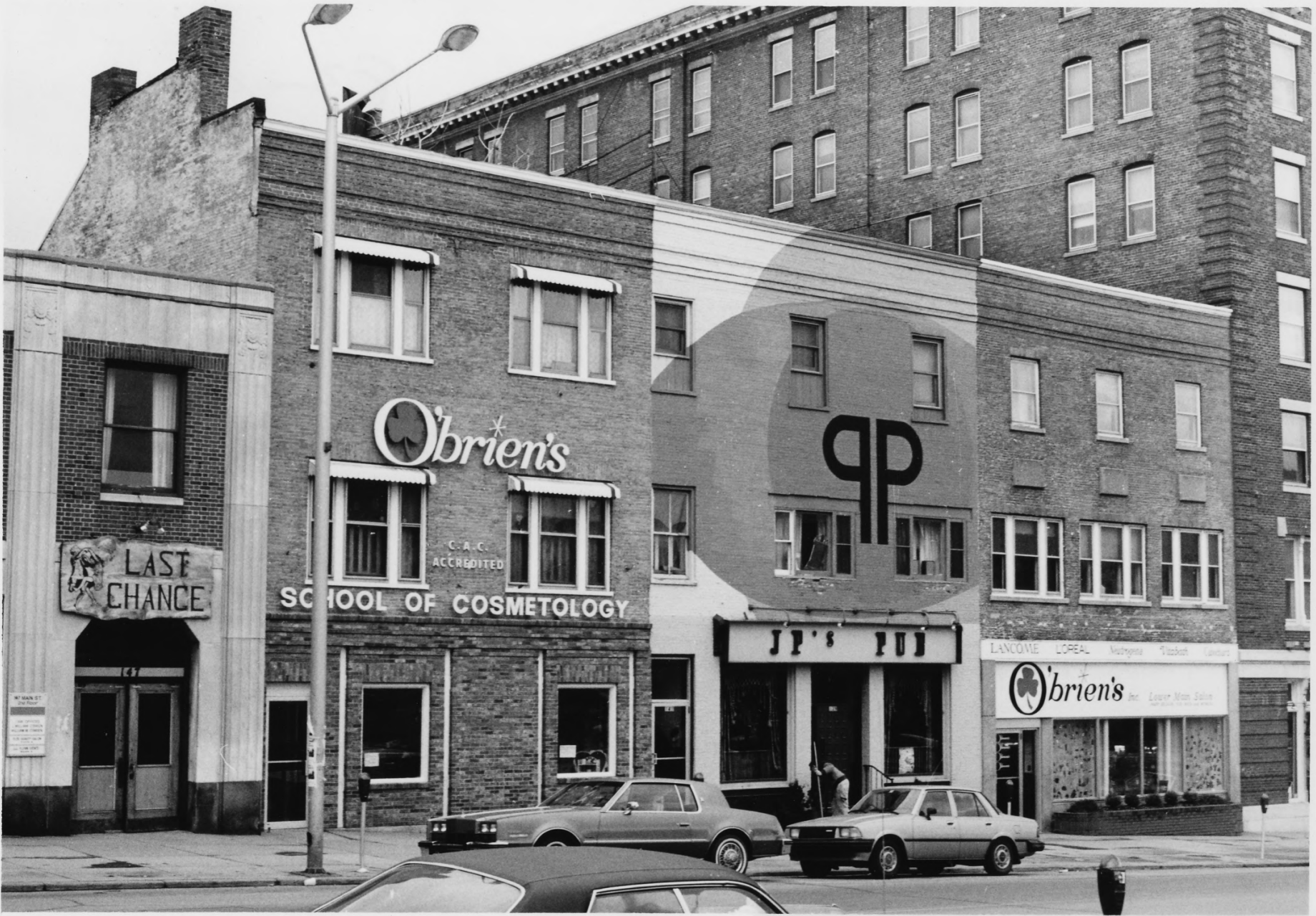
Date: January, 1983

Negative Filed at Vermont Division for
Historic Preservation

Description: Hotel Vermont, #12; View looking
Southwest

Photograph 13

00



83-A-1

City Hall Park Historic District
Burlington, Vermont

Credit: Gina Campoli

Date: January, 1983

Negative Filed at Vermont Division for
Historic Preservation

Description: East wing of the American House,
#13; View looking Southwest

Photograph 14



BY

FLYNN

FLYNN

BOX OFFICE REOPENS AND
HAPPY HOLIDAYS

SUNDBERG'S
NEWS
GREETING CARDS
TOBACCO
GIFTS

THE Partry
ON THE PARK

LAST
CHANCE

SCHOOL

City Hall Park Historic District

Burlington, Vermont

Credit: Gina Campoli

Date: January, 1983

Negative Filed at Vermont Division for

Historic Preservation

Description: Flynn Theater, #14; View looking

Southwest

Photograph 15

83-A-1



Boozin's

THE WINGED LADY

CHEESE - SUB SHOP

ANTIQUES

HANDICAPPED PARKING

161

City Hall Park Historic District
Burlington, Vermont

Credit: Gina Campoli

Date: January, 1983

Negative Filed at Vermont Division for
Historic Preservation

Description: Commercial Block at 155-159 Main
Street, #15; View looking Southwest

Photograph 16



83-A-~~2~~

City Hall Park Historic District
Burlington, Vermont
Credit: Gina Campoli
Date: January, 1983
Negative Filed at Vermont Division for
Historic Preservation
Description: Times Building, #17; View looking
Southwest
Photograph 17



FRI - MON
8084
COMING
HEADLINES

TEXAS

Richard's
cultures

PERMISSION
BARRY SHOP

Dunham
Great footwear
for the
great outdoors

FACTORY OUTLET

OPEN SUNDAYS

Footwear Outlet

83-A-1

City Hall Park Historic District
Burlington, Vermont

Credit: Gina Campoli

Date: January, 1983

Negative Filed at Vermont Division for
Historic Preservation

Description: (L) Stacy House, #19; (R) Stacy
Livery Stable, #18; View looking Southwest
Photograph 18



DRINK
Coca-Cola
CHARLIE'S
RED HOTS
HAMBURGERS

PASSING
WATER

Classical

FRESH GROUND

The BUSINESS
FOR SALE
864-743

City Hall Park Historic District

Burlington, Vermont

Credit: Gina Campoli

Date: January, 1983

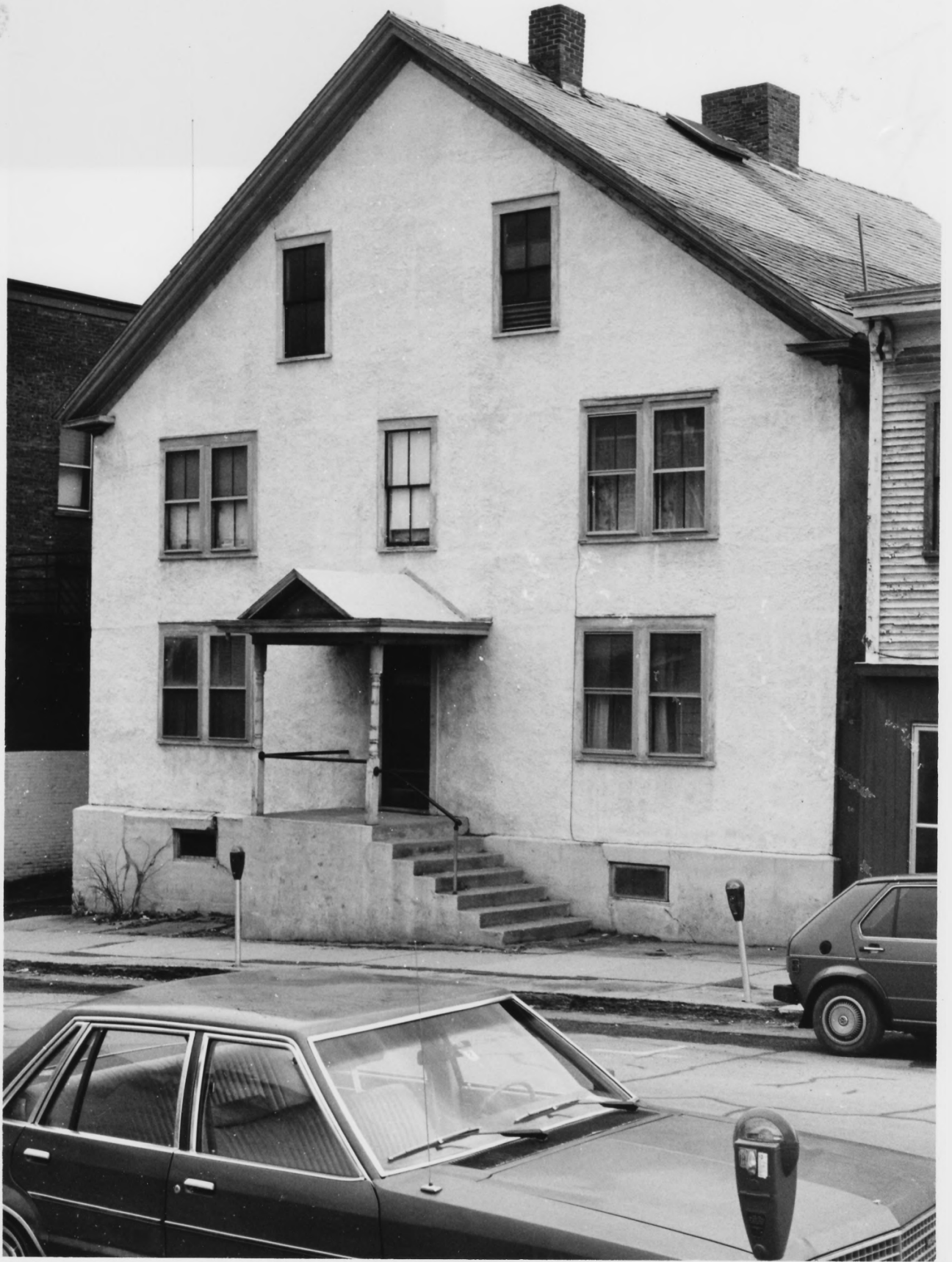
Negative Filed at Vermont Division for
Historic Preservation

Description: (L) Charlies Red Hots, #21; (R)

Fresh Ground Coffee House, #20; View looking
Northwest

Photograph 19

83-A-1



City Hall Park Historic District
Burlington, Vermont

Credit: Gina Campoli

Date: January, 1983

Negative Filed at Vermont Division for
Historic Preservation

Description: Asahel Peck House, #22; View
looking Southwest

Photograph 20

83-41



83-A-1-10

City Hall Park Historic District
Burlington, Vermont
Credit: Gina Campoli
Date: January, 1983
Negative Filed at Vermont Division for
Historic Preservation
Description: Wilson Block, #23; View looking
Southwest
Photograph 21



83-1-A

City Hall Park Historic District

Burlington, Vermont

Credit: Gina Campoli

Date: January, 1983

Negative Filed at Vermont Division for
Historic Preservation

Description: Mills House (Wilson Hotel), #24;
View looking Southwest

Photograph 22



City Hall Park Historic District

Burlington, Vermont

Credit: Gina Campoli

Date: January, 1983

Negative Filed at Vermont Division for

Historic Preservation

Description: Mills House (Wilson Hotel), #24;

View looking Northwest

Photograph 23

83-A-1