



Werner/Gilchrist House

202 Cornell SE

Albuquerque, New Mexico

West facade, c. 1909

Photographer unknown

Albuquerque Museum collections

P. O. Box 1293, Albuquerque, NM



#1A

Werner/Gilchrist House

202 Cornell SE

Albuquerque, New Mexico

View of house from southwest, c. 1909

photographer unknown

Albuquerque Museum collections

P. O. Box 1293, Albuquerque, NM



Werner/Gilchrist House

202 Cornell SE

Albuquerque, New Mexico

View from southwest, c. 1912

Photographer unknown

Albuquerque Museum collections

P. O. Box 1293, Albuquerque, NM



Werner/Gilchrist House

202 Cornell SE

Albuquerque, New Mexico

Central hallway, looking west, c. 1915

Photographer unknown

Albuquerque Museum collection

P. O. Box 1293, Albuquerque, NM





Werner/Gilchrist House

202 Cornell SE

Albuquerque, New Mexico

West facade

Christopher Wilson, October, 1981

Historic Landmarks Survey of Albuquerque

P. O. Box 1293, Albuquerque, NM



Werner/Gilchrist House

202 Cornell SE

Albuquerque, New Mexico

View from northwest

Christopher Wilson, October, 1981

Historic Landmarks Survey of Albuquerque

P. O. Box 1293, Albuquerque, NM



Werner/Gilchrist House

202 Cornell SE

Albuquerque, New Mexico

roof detail

Christopher Wilson, October, 1981

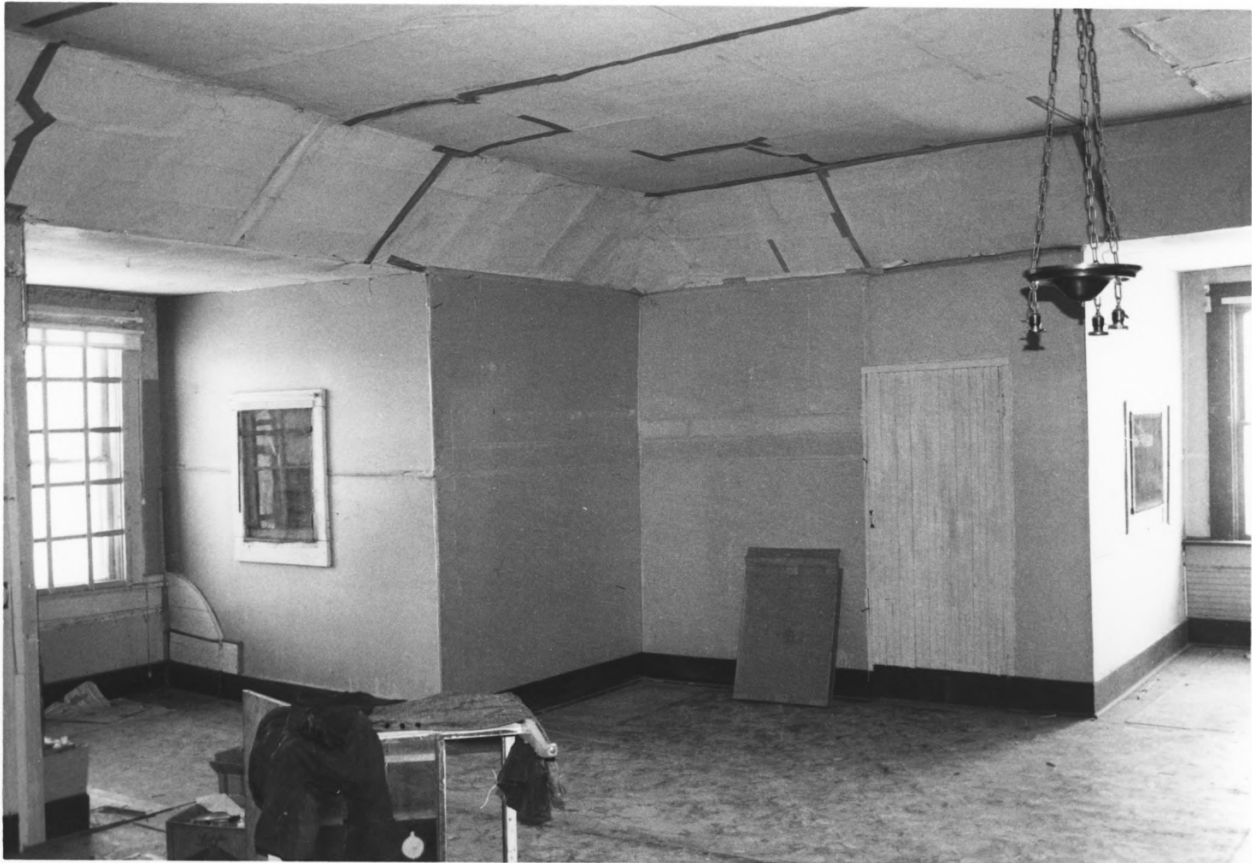
Historic Landmarks Survey of Albuquerque

P. O. Box 1293, Albuquerque, NM



Werner/Gilchrist House  
202 Cornell SE  
Albuquerque, New Mexico  
Central hallway, looking east  
Christopher Wilson, October, 1981  
Historic Landmarks Survey of Albuquerque  
P. O. Box 1293, Albuquerque, NM





Werner/Gilchrist House

202 Cornell SE

Albuquerque, New Mexico

Second story room, southwest corner

Christopher Wilson, October 1981

Historic Landmarks Survey of Albuquerque

P. O. Box 1293, Albuquerque, NM