

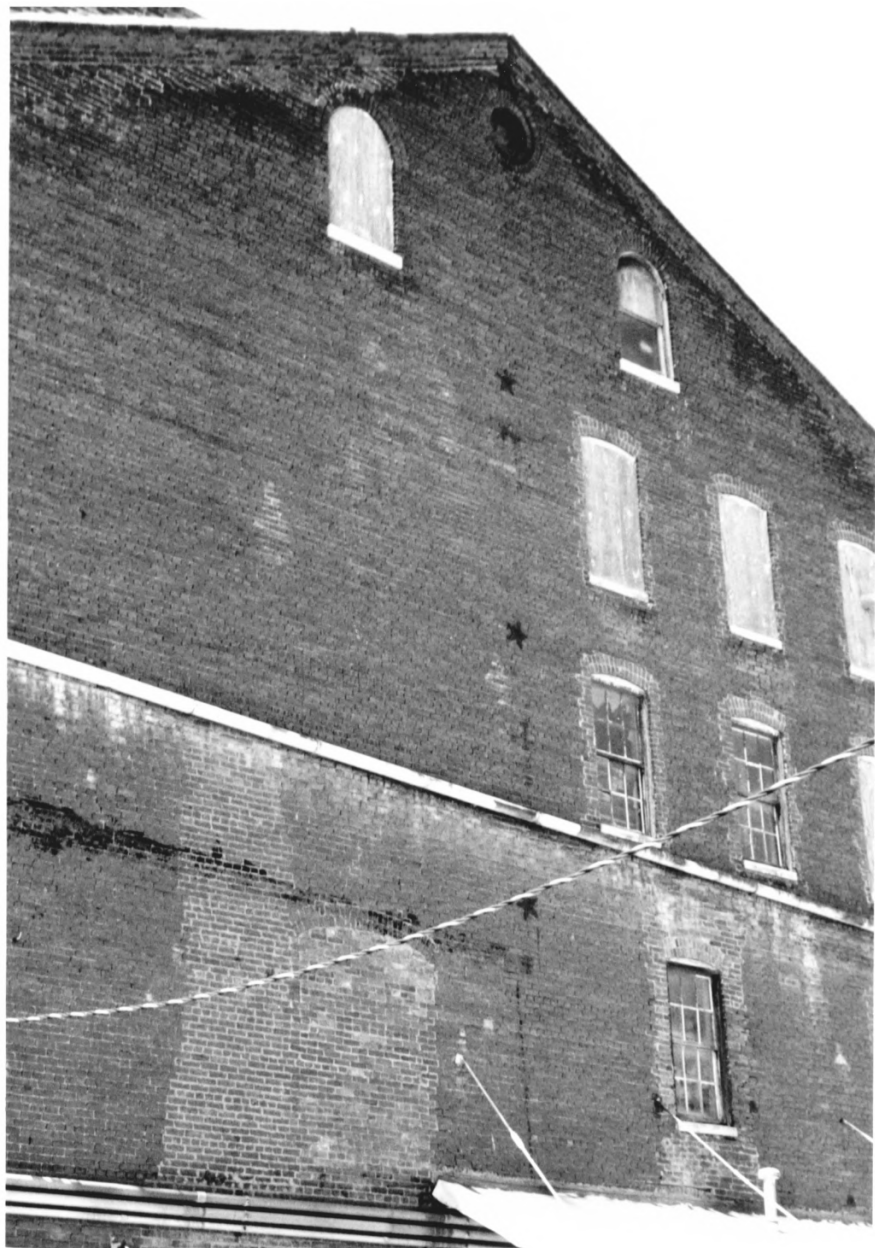
TRI CITY VAN & STORAGE

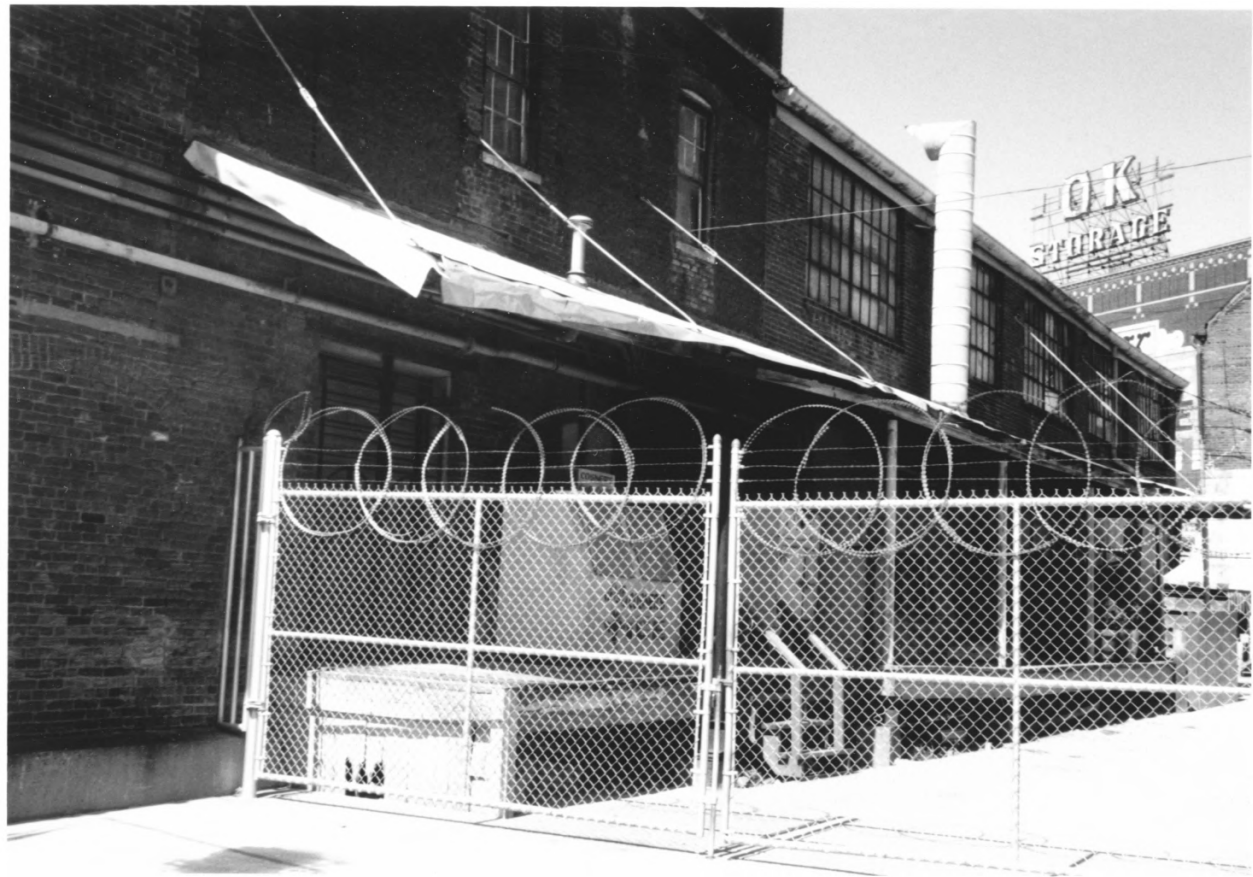












A black and white photograph of a two-story brick building. The building has several large, multi-paned windows, some of which are open. A sign is mounted on the brick wall, featuring a left-pointing arrow, the text "LOUISVILLE STONEWARE CO.", and a right-pointing arrow. Below the sign, there are several large, rectangular openings in the brickwork, which appear to be boarded up or covered with a light-colored material. A downspout is visible on the left side of the building. The building is situated on a street corner, and a paved area is visible in the foreground. In the background, another building and a utility pole are visible.

← LOUISVILLE STONEWARE CO. →