

L. W. McCALL
CONTRACT HAULING
PHONE CTL'D. 752

IMPERIAL THEATRE

L. W. McCALL
WALNUT GROVE

75-715
156-184

McCurry
PHOTO CO.

IMPERIAL THEATRE

WALNUT GROVE, CA

PHOTOGRAPHER: UNKNOWN

CIRCA 1927

NEGATIVE: TIM WILSON, WALNUT GROVE, CA

LOOKING NORTHEAST

#1 of 20



IMPERIAL THEATRE

WALNUT GROVE, CA

PHOTOGRAPHER: UNKNOWN

CIRCA 1937-38, PREMIERE OF "SNOW WHITE"

NEGATIVE: BOB MCCABE, SACRAMENTO, CA

LOOKING WEST, FRONT ELEVATION

#2 of 20



IMPERIAL THEATRE

WALNUT GROVE, CA

PHOTOGRAPHER: UNKNOWN

CIRCA 1937-38, PREMIER OF "SNOW WHITE"

NEGATIVE: BOB McCABE, SACRAMENTO, CA

LOOKING NORTHWEST, FRONT ELEVATION

#3 of 20

THEATRE



IMPERIAL THEATRE

WALNUT GROVE, CA

PHOTOGRAPHER: BOB MCCABE - ARCHITECT

FEBRUARY 1982

NEGATIVE: BOB MCCABE, SACRAMENTO

LOOKING SOUTHWEST

#4 of 20

THEATRE



NO
SMOKING

NO
SMOKING

4



IMPERIAL THEATRE

WALNUT GROVE, CA

PHOTOGRAPHER: BOB MCCABE - ARCHITECT

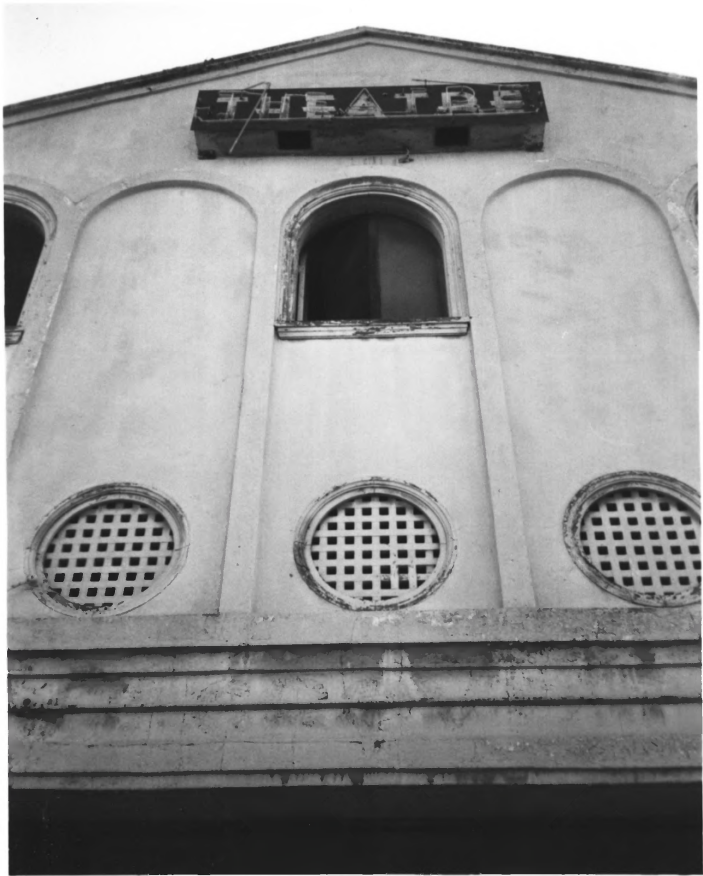
FEBRUARY 1982

NEGATIVE: BOB MCCABE, SACRAMENTO

LOOKING WEST, FRONT ELEVATION

#5 of 20

THEATRE



IMPERIAL THEATRE

WALNUT GROVE, CA

PHOTOGRAPHER: BOB MCCABE = ARCHITECT

FEBRUARY 1982

NEGATIVE: BOB MCCABE, SACRAMENTO

WEST ELEVATION

#6 of 20



IMPERIAL THEATRE

WALNUT GROVE, CA

PHOTOGRAPHER: BOB MCCABE = ARCHITECT

FEBRUARY 1982

NEGATIVE: BOB MCCABE, SACRAMENTO

SOUTHEAST ELEVATION/REAR ADDITION

#7 of 20



IMPERIAL THEATRE

WALNUT GROVE, CA

PHOTOGRAPHER: BOB MCCABE - ARCHITECT

FEBRUARY 1982

NEGATIVE: BOB MCCABE, SACRAMENTO

SOUTH ELEVATION/STAGE EXIT DOOR, REAR

#8 of 20

A black and white photograph of a weathered wooden door. The door is set within a frame and has a sign at the top that reads "FRI - SAT - SUN". The door is made of vertical planks and shows signs of age and wear. The surrounding wall is also made of wood, with a vertical plank on the left side. The lighting is somewhat dim, and the overall appearance is that of an old, possibly abandoned, building.

FRI - SAT - SUN

IMPERIAL THEATRE

WALNUT GROVE, CA

PHOTOGRAPHER: BOB MCCABE - ARCHITECT

FEBRUARY 1982

NEGATIVE: BOB MCCABE, SACRAMENTO

LOBBY/EARLY MARQUEE

#9 of 20



IMPERIAL THEATRE

WALNUT GROVE, CA

PHOTOGRAPHER: BOB MCCABE - ARCHITECT

FEBRUARY 1982

LOBBY/BOX OFFICE

#10 of 20



IMPERIAL THEATRE

WALNUT GROVE, CA

PHOTOGRAPHER: BOB MCCABE - ARCHITECT

FEBRUARY 1982

NEGATIVE: BOB MCCABE - ARCHITECT, SACRAMENTO

ORIGINAL PRESSED TIN CEILING AND CROWN MOLD/
LOBBY

#11 of 20



IMPERIAL THEATRE

WALNUT GROVE, CA

PHOTOGRAPHER: BOB MCCABE - ARCHITECT

FEBRUARY 1982

NEGATIVE: BOB MCCABE, SACRAMENTO

LOBBY/STAIR TO BALCONY

#12 of 20



IMPERIAL THEATRE

WALNUT GROVE, CA

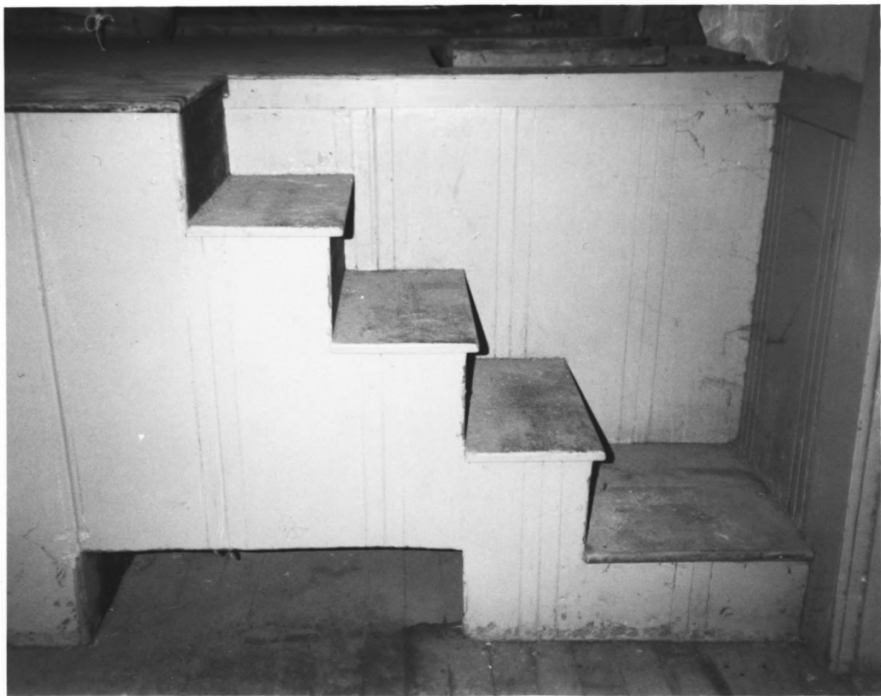
PHOTOGRAPHER: BOB MCCABE - ARCHITECT

FEBRUARY 1982

NEGATIVE: BOB MCCABE, SACRAMENTO

STAGE / 1" x 4" VERTICAL GRAIN T&G FLOORING,
FOOTLIGHT TROUGH

#13 of 20



IMPERIAL THEATRE

WALNUT GROVE, CA

PHOTOGRAPHER: BOB MCCABE - ARCHITECT

FEBRUARY 1982

NEGATIVE: BOB MCCABE, SACRAMENTO

STAGE/STAIRS

#14 of 20



IMPERKAL THEATRE

WALNUT GROVE, CA

PHOTOGRAPHER: BOB MCCABE - ARCHITECT

FEBRUARY 1982

NEGATIVE: BOB MCCABE, SACRAMENTO

MAIN AUDITORIUM/CAST IRON SEATING, WAINSCOT

#15 of 20



IMPERIAL THEATRE

WALNUT GROVE, CA

PHOTOGRAPHER: BOB MCCABE - ARCHITECT

FEBRUARY 1982

NEGATIVE: BOB MCCABE, SACRAMENTO

AUDITORIUM/ORIGINAL PRESSED TIN CEILING AND

#16 of 20

CROWN MOLD



IMPERIAL THEATRE

WALNUT GROVE, CA

PHOTOGRAPHER: BOB MCCABE - ARCHITECT

FEBRUARY 1982

NEGATIVE: BOB MCCABE, SACRAMENTO

AUDITORIUM/ORIGINAL PRESSED TIN CEILING

#17 of 20



IMPERIAL THEATRE

WALNUT GROVE, CA

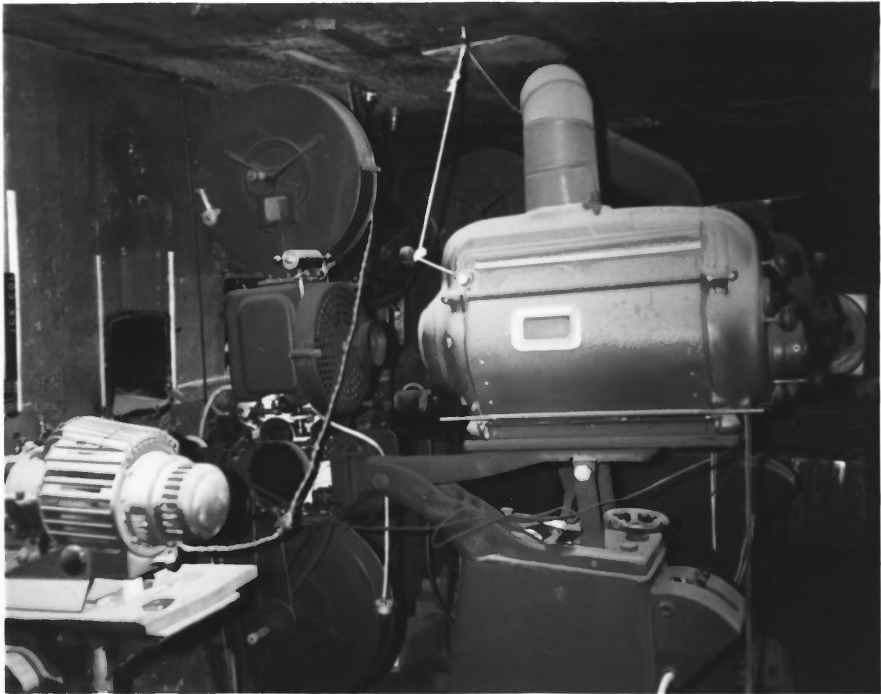
PHOTOGRAPHER: BOB MCCABE - ARCHITECT

FEBRUARY 1982

NEGATIVE: BOB MCCABE, SACRAMENTO

BALCONY/CAST IRON SEATING, WAINSCOT

#18 of 20



IMPERIAL THEATRE

WALNUT GROVE, CA

PHOTOGRAPHER: BOB MCCABE - ARCHITECT

FEBRUARY 1982

NEGATIVE: BOB MCCABE, SACRAMENTO

PROJECTION ROOM/EARLY PROJECTOR

#19 of 20



IMPERIAL THEATRE

WALNUT GROVE, CA

PHOTOGRAPHER: BOB MCCABE - ARCHITECT

FEBRUARY 1982

NEGATIVE: BOB MCCABE, SACRAMENTO

PROJECTION ROOM/FILM STORAGE CASES,

HAND-REWIND TABLE

#20 of 20