

958

United States Department of the Interior  
National Park Service

National Register of Historic Places  
Registration Form



This form is for use in nominating or requesting determinations for individual properties and districts. See instructions in *How to Complete the National Register of Historic Places Registration Form* (National Register Bulletin 16A). Complete each item by marking "x" in the appropriate box or by entering the information requested. If an item does not apply to the property being documented, enter "N/A" for "not applicable." For functions, architectural classification, materials, and areas of significance, enter only categories and subcategories from the instructions. Place additional entries and narrative items on continuation sheets (NPS Form 10-900a). Use a typewriter, word processor, or computer, to complete all items.

1. Name of Property

historic name Bryant-Lasater House

other names/site number Kirksey Maternity Hospital, Site #CW0243

2. Location

street & number 770 North Main Street

☐ not for publication

city or town Mulberry

☐ vicinity

state Arkansas

code AR

county Crawford

code 033

zip code 72947

3. State/Federal Agency Certification

As the designated authority under the National Historic Preservation Act, as amended, I hereby certify that this ☒ nomination ☐ request for determination of eligibility meets the documentation standards for registering properties in the National Register of Historic Places and meets the procedural and professional requirements set for in 36 CFR Part 60. In my opinion, the property ☒ meets ☐ does not meet the National Register criteria. I recommend that this property be considered significant ☐ nationally ☐ statewide ☒ locally. (See continuation sheet for additional comments.)

Cecilia Matthews  
Signature of certifying official/Title

2/5/07  
Date

Arkansas Historic Preservation Program

State or Federal agency and bureau

In my opinion, the property ☐ meets ☐ does not meet the National Register criteria. (☐ See Continuation sheet for additional comments.)

\_\_\_\_\_  
Signature of certifying official/Title

\_\_\_\_\_  
Date

\_\_\_\_\_  
State or Federal agency and bureau

4. National Park Service Certification

I hereby certify that the property is:

☒ entered in the National Register.

☐ See continuation sheet

☐ determined eligible for the National Register.

☐ See continuation sheet

☐ determined not eligible for the National Register.

☐ removed from the National Register.

☐ other, (explain:) \_\_\_\_\_

Edson H. Beall  
Signature of the Keeper

9.19.07  
Date of Action

Bryant-Lasater House  
Name of Property

Crawford County, Arkansas  
County and State

## 5. Classification

**Ownership of Property**  
(Check as many boxes as apply)

- ☐ private  
☒ public-local  
☐ public-State  
☐ public-Federal

**Category of Property**  
(Check only one box)

- ☒ building(s)  
☐ district  
☐ site  
☐ structure  
☐ object

**Number of Resources within Property**  
(Do not include previously listed resources in count.)

Contributing

Noncontributing

1	buildings
	sites
	structures
	objects
1	Total

**Name of related multiple property listing**  
(Enter "N/A" if property is not part of a multiple property listing.)

**Number of Contributing resources previously listed  
in the National Register**

## 6. Function or Use

**Historic Functions**  
(Enter categories from instructions)

DOMESTIC/single dwelling  
HEALTH CARE/hospital

**Current Functions**  
(Enter categories from instructions)

VACANT/NOT IN USE

## 7. Description

**Architectural Classification**  
(Enter categories from instructions)

OTHER/Plain Traditional

**Materials**  
(Enter categories from instructions)

foundation CONCRETE  
walls WOOD  
  
roof ASPHALT  
other

**Narrative Description**  
(Describe the historic and current condition of the property on one or more continuation sheets.)

United States Department of the Interior  
National Park Service

## National Register of Historic Places Continuation Sheet

Section number 7 Page 1

### SUMMARY

The Bryant-Lasater House is located at 770 North Main Street in Mulberry, a small community in Crawford County in western Arkansas. The wood-frame house is one and one-half stories tall and is built on a continuous foundation of molded concrete blocks. The walls are covered in wood siding, and a large pyramidal roof covered in asphalt shingles tops the house. Each elevation of the roof is also pierced with a hipped-roof dormer. A large hipped-roof porch spans the front façade of the building.

### ELABORATION

The Bryant-Lasater House is located at 770 North Main Street in Mulberry, a small community in Crawford County in western Arkansas. The setting around the house is open given that the location is just south of Kirksey Park, the location of the Crawford County Fair.

The wood-frame house is one and one-half stories tall and is built on a continuous foundation of molded concrete blocks. The walls are covered in wood siding, and are fenestrated with wood-frame, double-hung windows, mainly with an eight-over-one or six-over-one light pattern.

The house is topped by a large pyramidal roof covered in asphalt shingles. Each elevation of the roof is also pierced with a hipped-roof dormer that increases the space on the second floor and provides additional light and ventilation. A large hipped-roof porch spans the front façade of the building.

### Front/West Façade

The front façade of the Bryant-Lasater House is dominated by the full-width front porch. The porch is built on a concrete-block foundation and has a concrete floor. A set of two concrete steps leads up to the porch level. The porch is supported by four square wood columns with projecting columns and bases. The porch is covered with a hipped roof that ties into the roof of the main house.

The façade is symmetrical around the central entrance. The front entrance has a wood-frame door with a single pane of glass, a metal screen door, and a transom window above. On either side of the entrance is a single wood-frame, double-hung, six-over-one window. The portion of the façade with the entrance and flanking windows is slightly recessed from the façade's main plane. The main plane of the façade, on either side of the entrance, is fenestrated by a single wood-frame, double-hung, eight-over-one window.

The façade of the front dormer is fenestrated with a pair of wood-frame, double-hung, six-over-one windows.

### Side/South Façade

The left side of the south façade projects out from the rest of the side façade. The projecting section of the façade is fenestrated by a single wood-frame, double-hung, eight-over-one window. Proceeding along the recessed portion of the façade to the east, it is fenestrated by a single wood-frame, double-hung, six-over-one window followed by an entrance with a wood-frame door with a single window pane in the top of the door

United States Department of the Interior  
National Park Service

## National Register of Historic Places Continuation Sheet

Section number 7 Page 2

and a metal screen door. A shed-roofed awning supported by knee braces shelters the entrance. To the right of the entrance is a pair of wood-frame, double-hung, one-over-one windows.

As on the front façade, the façade of the dormer is fenestrated with a pair of wood-frame, double-hung, six-over-one windows.

### Rear/East Façade

The left three-quarters of the rear façade projects from the main plane of the façade, and mostly represents an open porch that was enclosed at some point. Beginning at the left edge of the façade, it is fenestrated by a pair of wood-frame, double-hung, one-over-one windows, followed by an entrance with a wood door with recessed horizontal panels and a metal screen door, and a single wood-frame, double-hung, six-over-one window. The façade's main plane is fenestrated by a pair of wood-frame, double-hung, four-over-four windows.

The façade of the dormer, like those on the other façades, is fenestrated with a pair of wood-frame, double-hung, six-over-one windows, although the top sash of the left window has been replaced by a board.

### Side/North Façade

The right side of the south façade projects out from the rest of the side façade. The projecting section of the façade is fenestrated by a single wood-frame, double-hung, eight-over-one window. Proceeding along the recessed portion of the façade to the west, it is fenestrated by a single wood-frame, double-hung, six-over-one window. Towards the rear of the house is a group of four wood-frame, double-hung, four-over-four windows, although the bottom sash of the right window has been removed and sided over.

As on the building's other façades, the façade of the dormer is fenestrated with a pair of wood-frame, double-hung, six-over-one windows.

### Integrity

The Bryant-Lasater House retains a high degree of integrity. The largest modification to the property is the enclosing of the rear porch, although it appears to be an historic alteration. The building retains its original siding and windows. In addition, the setting around the property retains the rural feel on the edge of a small town that it would have had when it was built in the early twentieth century.



**8. Statement of Significance****Applicable National Register Criteria**

(Mark "x" in one or more boxes for the criteria qualifying the property for National Register listing.)

- ☒ **A** Property is associated with events that have made a significant contribution to the broad patterns of our history.
- ☐ **B** Property is associated with the lives of persons significant in our past.
- ☒ **C** Property embodies the distinctive characteristics of a type, period, or method of construction or represents the work of a master, or possesses high artistic values, or represents a significant and distinguishable entity whose components lack individual distinction.
- ☐ **D** Property has yielded, or is likely to yield, information important in prehistory or history.

**Criteria Considerations**

(Mark "x" in all the boxes that apply.)

Property is:

- ☐ **A** owned by a religious institution or used for religious purposes.
- ☐ **B** removed from its original location.
- ☐ **C** birthplace or grave of a historical figure of outstanding importance.
- ☐ **D** a cemetery.
- ☐ **E** a reconstructed building, object, or structure.
- ☐ **F** a commemorative property
- ☐ **G** less than 50 years of age or achieved significance within the past 50 years.

**Levels of Significance** (local, state, national)

LOCAL

**Areas of Significance** (Enter categories from instructions)

HEALTH/MEDICINE

ARCHITECTURE

**Period of Significance**

c.1900, 1945-1957

**Significant Dates**

c.1900, 1945-1957

**Significant Person** (Complete if Criterion B is marked)**Cultural Affiliation** (Complete if Criterion D is marked)**Architect/Builder****Narrative Statement of Significance**

(Explain the significance of the property on one or more continuation sheets.)

**9. Major Bibliographical References****Bibliography**

(Cite the books, articles, and other sources used in preparing this form on one or more continuation sheets.)

**Previous documentation on file (NPS):**

- ☐ preliminary determination of individual listing (36 CFR 67) has been requested
- ☐ previously listed in the National Register
- ☐ Previously determined eligible by the National Register
- ☐ designated a National Historic Landmark
- ☐ recorded by Historic American Buildings Survey  
# \_\_\_\_\_
- ☐ recorded by Historic American Engineering  
Record # \_\_\_\_\_

**Primary location of additional data:**

- ☒ State Historic Preservation Office
- ☐ Other State Agency
- ☐ Federal Agency
- ☐ Local Government
- ☐ University
- ☐ Other

Name of repository:

United States Department of the Interior  
National Park Service

## National Register of Historic Places Continuation Sheet

Section number 8 Page 1

### SUMMARY

The Bryant-Lasater House, which was built c.1900, is being nominated to the National Register of Historic Places under **Criterion C** with **local significance** for its significance as an unusually large and elaborate example of a pyramidal-roofed house in Mulberry. Pyramidal-roof houses developed in the first part of the twentieth century in the south as a replacement for the smaller hall-and-parlor house type. The Bryant-Lasater House is also being nominated to the National Register with **local significance** under **Criterion A** for its associations with health care in Mulberry. The Bryant-Lasater House has been home to the practices of several doctors in the community, including Dr. O. J. Kirksey, who operated the Kirksey Maternity Hospital in the house beginning in 1945.

### ELABORATION

Crawford County was created by an act of the Territorial Legislature on October 24, 1820, only two years after David Boyd, the first white settler, arrived in Van Buren. The new county, which was named for William H. Crawford, Secretary of the Treasury under James Monroe, encompassed most of the land now occupied by Yell, Logan, Johnson, Franklin, Scott, and Sebastian counties. The first county seat was temporarily located at the house of John Jay on the south side of the Arkansas River near the site of Crawford Old Court House. The county seat was eventually moved several times, ending up in Van Buren in 1838.<sup>1</sup>

Initially, the Arkansas River played a large role in the settlement and commerce in Crawford County. However, in the second half of the nineteenth century, the railroad became the supreme mode of transportation in the area. The Little Rock and Fort Smith Railroad, which was organized in 1853, acquired a vast amount of land in the area, including "alternate even sections for six miles on each side of the track." Work began on the line in 1869 and by August 1871 120 miles of track were completed. Finally, on June 24, 1876, the first train entered Van Buren.<sup>2</sup>

The community of Mulberry, which was on the line of the Little Rock and Fort Smith Railroad, was originally known as Crawford Courthouse (or Crawford Old Court House, depending on the source) and had a post office established in 1832. By 1839, it was located on the main road between Ozark and Van Buren. The name of the community was changed to Pleasant Hill in 1838 and it also became a part of Franklin County at the same time. In 1877, the community's name was changed once again, to Mulberry, and in 1896, the community went back to Crawford County.<sup>3</sup>

<sup>1</sup> *Biographical and Historical Memoirs of Northwestern Arkansas*. Chicago, Nashville, and St. Louis: The Goodspeed Publishing Co. 1890, pp. 495 and 498.

<sup>2</sup> *Ibid*, pp. 502-503, and *Maps showing the Connections of the Little Rock and Fort Smith Railroad and its Land Grant*. Map. New York, G. W. & C. B. Colton & Co., 1873.

<sup>3</sup> Baker, Russell Pierce. From Memdag to Norsk: A Historical Directory of Arkansas Post Offices, 1832-1971. Hot Springs, AR: Arkansas Genealogical Society, 1988, pp. 54, 156, and 178, and Burr, David. H. *Map of Mississippi, Louisiana & Arkansas exhibiting the post offices, post roads, canals, rail roads, &c.* Map. London: J. Arrowsmith, 1839.

United States Department of the Interior  
National Park Service

## National Register of Historic Places Continuation Sheet

Section number 8 Page 2

The arrival of the railroad also helped Mulberry's development, not only in bringing people to the area, but also in selling off land, which encouraged development. The land that is occupied by the Bryant-Lasater House was deeded to E. B. Bryant by the Little Rock and Fort Smith Railway on January 7, 1882. Although it is not known exactly when the house was built, it was built prior to February 19, 1908, when the property was deeded to their daughter, Annaliza Lasater.<sup>4</sup>

Given the fact that the house was built as a pyramidal-roofed house indicates that it was likely built c.1900. The pyramidal-roofed house, at least in the south, developed in the first decades of the twentieth century as a replacement of the hall-and-parlor type, which was often a smaller house. The pyramidal roof was ideal for homes with a square or nearly square plan, since it was a less expensive roof type to construct. The roof type required more complex framing, but fewer long-spanning rafters, which accounted for the cheaper cost. Many rural examples of the house type remained simple with little detailing, although urban examples did use detailing from the popular styles of the day including Colonial Revival, Neoclassical, Prairie, Tudor or Craftsman.<sup>5</sup>

The Bryant-Lasater House is an unusually large example of a pyramidal-roofed house, especially in a small town like Mulberry. In addition, the large front porch and the four large dormers that turned the upper floor into usable space, were also an unusual feature on a pyramidal-roof house.

Towards the middle of the twentieth century, the house became associated with the town's health care community. In 1945, Dr. O. J. Kirksey, who had begun his practice in Mulberry in the 1920s, purchased the house and transferred his Kirksey Maternity Hospital to the building. (He was one of several doctors who have had their practice in the house, either alone or as part of an association, although definitely the most prolific.) By the time that Dr. Kirksey died in 1966, it was believed that he had delivered approximately 4,700 babies in his career.<sup>6</sup>

In recent years, the property has been acquired by the City of Mulberry. Although it is currently vacant, the community is hoping to restore the building for community use. However, the Bryant-Lasater House remains a good example of an early-twentieth-century pyramidal-roofed house and an important part of Mulberry's medical history.

### STATEMENT OF SIGNIFICANCE

The Bryant-Lasater House, which was built c.1900, is being nominated to the National Register of Historic Places under **Criterion C** with **local significance** for its significance as an unusually large and elaborate

<sup>4</sup> Feller, Betty. Mayor of Mulberry. E-mail to the author. 29 January 2007.

<sup>5</sup> McAlester, Virginia, and Lee McAlester. *A Field Guide to American Houses*. New York: Alfred A Knopf, 1994, p. 100.

<sup>6</sup> Feller, Betty. Mayor of Mulberry. E-mail to the author. 29 January 2007.

Bryant-Lasater House

Name of Property

Crawford County, Arkansas

County and State

United States Department of the Interior  
National Park Service

## National Register of Historic Places Continuation Sheet

Section number 8 Page 3

---

example of a pyramidal-roofed house in Mulberry. Pyramidal-roof houses developed in the first part of the twentieth century in the south as a replacement for the smaller hall-and-parlor house type. The Bryant-Lasater House is also being nominated to the National Register with **local significance** under **Criterion A** for its associations with healthcare in Mulberry. The Bryant-Lasater House has been home to the practices of several doctors in the community, including Dr. O. J. Kirksey, who operated the Kirksey Maternity Hospital in the house beginning in 1945.



United States Department of the Interior  
National Park Service

## National Register of Historic Places Continuation Sheet

Section number 9 Page 1

---

### BIBLIOGRAPHY

Baker, Russell Pierce. *From Memdag to Norsk: A Historical Directory of Arkansas Post Offices, 1832-1971*. Hot Springs, AR: Arkansas Genealogical Society, 1988.

*Biographical and Historical Memoirs of Northwestern Arkansas*. Chicago, Nashville, and St. Louis: The Goodspeed Publishing Co. 1890

Burr, David. H. *Map of Mississippi, Louisiana & Arkansas exhibiting the post offices, post roads, canals, rail roads, &c.* Map. London: J. Arrowsmith, 1839.

Feller, Betty. Mayor of Mulberry. E-mail to the author. 29 January 2007.

McAlester, Virginia, and Lee McAlester. *A Field Guide to American Houses*. New York: Alfred A Knopf, 1994.

*Maps showing the Connections of the Little Rock and Fort Smith Railroad and its Land Grant*. Map. New York, G. W. & C. B. Colton & Co., 1873.



Bryant-Lasater House  
Name of Property

Crawford County, Arkansas  
County and State

## 10. Geographical Data

Acreage of Property Less than one.

### UTM References

(Place additional UTM references on a continuation sheet.)

1 15 404652 3929671  
Zone Easting Northing  
2 \_\_\_\_\_

3 \_\_\_\_\_  
Zone Easting Northing  
4 \_\_\_\_\_  
☐ See continuation sheet

### Verbal Boundary Description

(Describe the boundaries of the property on a continuation sheet.)

### Boundary Justification

(Explain why the boundaries were selected on a continuation sheet.)

## 11. Form Prepared By

name/title Ralph S. Wilcox, National Register & Survey Coordinator  
organization Arkansas Historic Preservation Program date May 21, 2007  
street & number 1500 Tower Building, 323 Center Street telephone (501) 324-9787  
city or town Little Rock state AR zip code 72201

## Additional Documentation

Submit the following items with the completed form:

### Continuation Sheets

#### Maps

A **USGS map** (7.5 or 15 minute series) indicating the property's location

A **Sketch map** for historic districts and properties having large acreage or numerous resources.

#### Photographs

Representative **black and white photographs** of the property.

### Additional items

(Check with the SHPO or FPO for any additional items.)

## Property Owner

(Complete this item at the request of SHPO or FPO.)

name City of Mulberry  
street & number 207 N. Main Street telephone \_\_\_\_\_  
city or town Mulberry state AR zip code 72947

**Paperwork Reduction Act Statement:** This information is being collected for applications to the National Register of Historic Places to nominate properties for listing or determine eligibility for listing, to list properties, and to amend existing listing. Response to this request is required to obtain a benefit in accordance with the National Historic Preservation Act, as amended (16 U.S.C. 470 *et seq.*)

**Estimated Burden Statement:** Public reporting burden for this form is estimated to average 18.1 hours per response including time for reviewing instructions, gathering and maintaining data, and completing and reviewing the form. Direct comments regarding this burden estimate or any aspect of this form to the Chief, Administrative Services Division, National Park Service, P. O. Box 37127, Washington, DC 20013-7127; and the Office of Management and Budget, Paperwork Reductions Projects (1024-0018), Washington, DC 20303.

Bryant-Lasater House  
Name of Property

Crawford County, Arkansas  
County and State

United States Department of the Interior  
National Park Service

## National Register of Historic Places Continuation Sheet

Section number 10 Page 1

---

### VERBAL BOUNDARY DESCRIPTION

From a point on the east side of Main Street adjacent to the southwest corner of the West 8<sup>th</sup> Street and Main Street intersection, proceed easterly parallel to the south side of West 8<sup>th</sup> Street for 415 feet, thence proceed southerly parallel to Main Street for 415 feet, thence proceed westerly parallel to West 8<sup>th</sup> Street, thence proceed northerly along the east side of Main Street for 165 feet to the point of beginning.

### BOUNDARY JUSTIFICATION

The boundary contains the land that is historically associated with the Bryant-Lasater House.

UNITED STATES DEPARTMENT OF THE INTERIOR  
NATIONAL PARK SERVICE

NATIONAL REGISTER OF HISTORIC PLACES  
EVALUATION/RETURN SHEET

REQUESTED ACTION: NOMINATION

PROPERTY NAME: Bryant--Lasater House

MULTIPLE  
NAME:

STATE & COUNTY: ARKANSAS, Crawford

DATE RECEIVED: 8/06/07 DATE OF PENDING LIST: 8/27/07  
DATE OF 16TH DAY: 9/11/07 DATE OF 45TH DAY: 9/19/07  
DATE OF WEEKLY LIST:

REFERENCE NUMBER: 07000958

REASONS FOR REVIEW:

APPEAL: N DATA PROBLEM: N LANDSCAPE: N LESS THAN 50 YEARS: N  
OTHER: N PDIL: N PERIOD: N PROGRAM UNAPPROVED: N  
REQUEST: N SAMPLE: N SLR DRAFT: N NATIONAL: N

COMMENT WAIVER: N

☒ ACCEPT ☐ RETURN ☐ REJECT 9.19.07 DATE

ABSTRACT/SUMMARY COMMENTS:

Entered in the  
National Register

RECOM./CRITERIA \_\_\_\_\_

REVIEWER \_\_\_\_\_ DISCIPLINE \_\_\_\_\_

TELEPHONE \_\_\_\_\_ DATE \_\_\_\_\_

DOCUMENTATION see attached comments Y/N see attached SLR Y/N

If a nomination is returned to the nominating authority, the nomination is no longer under consideration by the NPS.





BRYANT-LASATER HOUSE

CRAWFORD COUNTY, AR

RALPH S. WILCOX

DECEMBER 2006

ARKANSAS HISTORIC PRESERVATION PROGRAM, LITTLE ROCK, AR

SOUTH FACADE LOOKING NORTHWEST





BRYANT-LASATER HOUSE

(CRAWFORD) COUNTY, AR

RALPH S. WILCOX

DECEMBER 2006

ARKANSAS HISTORIC PRESERVATION PROGRAM, LITTLE ROCK, AR  
EAST & SOUTH FACADES LOOKING NORTHWEST





BRYANT-LASATER HOUSE

CRAWFORD COUNTY, AR

RALPH S. WILCOX

DECEMBER 2006

ARKANSAS HISTORIC PRESERVATION PROGRAM, LITTLE ROCK, AR

EAST FACADE LOOKING WEST







BRYANT-LASATER HOUSE

CRAWFORD COUNTY, AR

RALPH S. WILCOX

DECEMBER 2006

ARKANSAS HISTORIC PRESERVATION PROGRAM, LITTLE ROCK, AR

NORTH FACADE LOOKING SOUTH



BRYANT-LASATER HOUSE

CRAWFORD COUNTY, AR

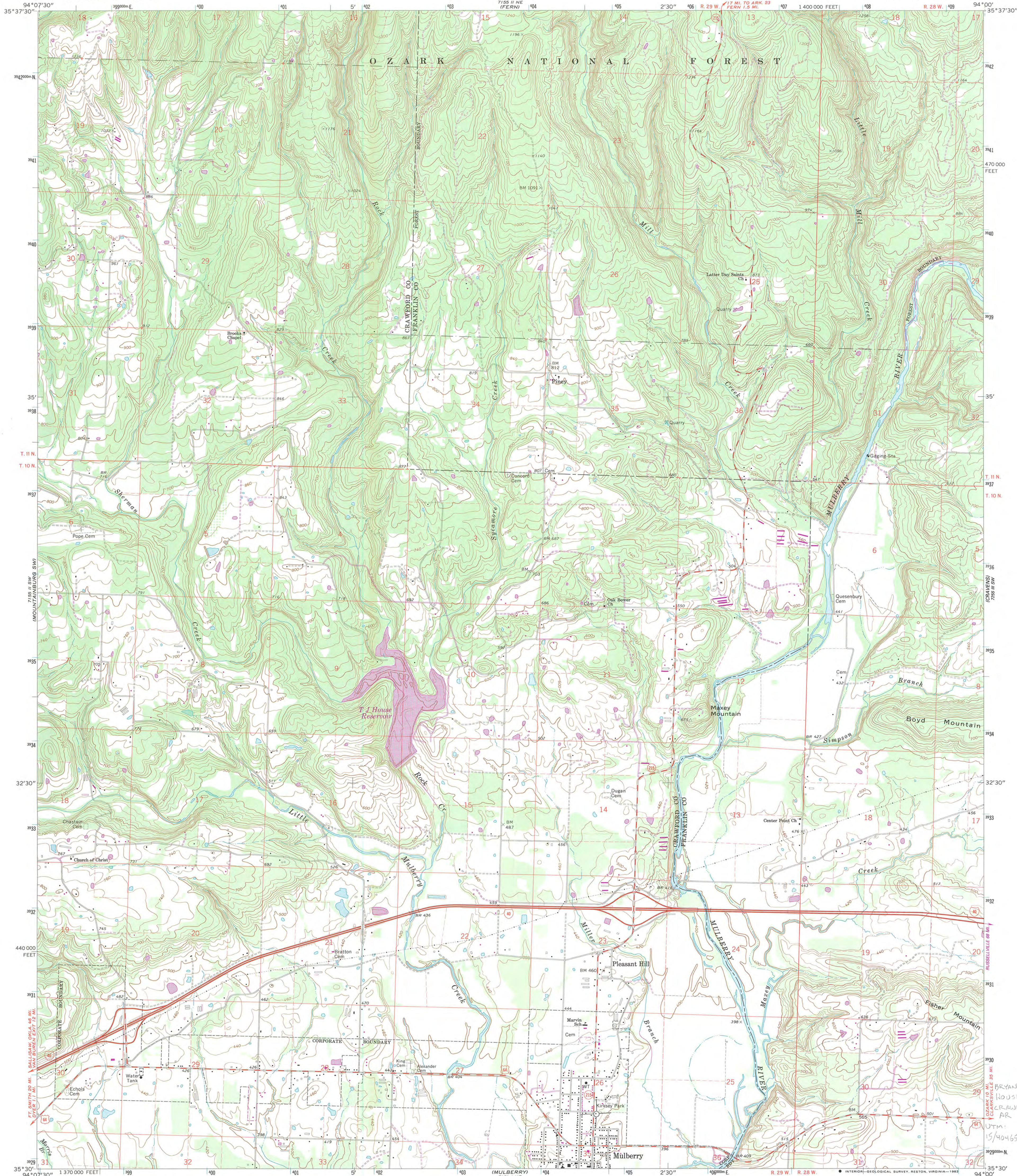
RALPH S. WILCOX

DECEMBER 2006

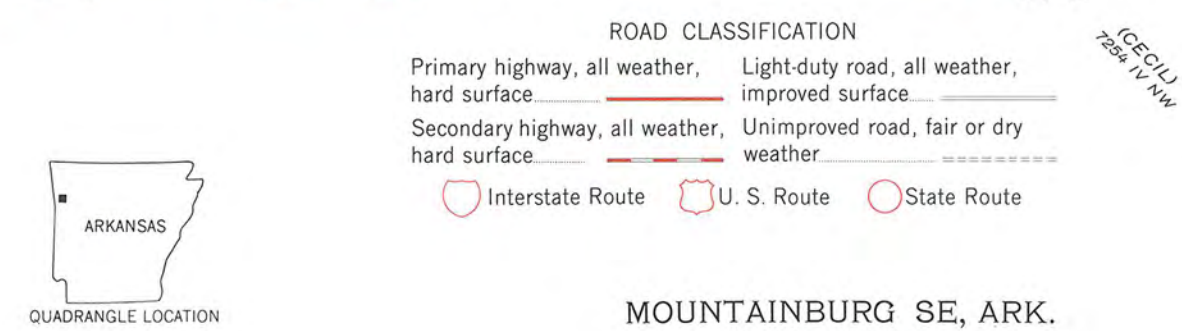
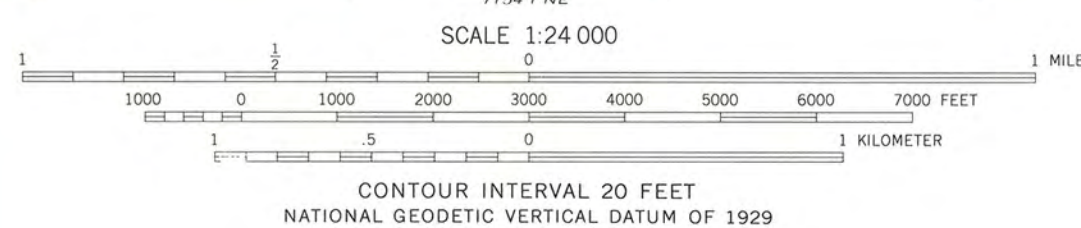
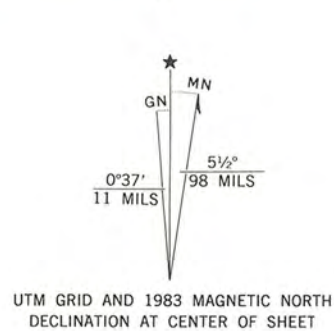
ARKANSAS HISTORIC PRESERVATION PROGRAM, LITTLE ROCK, AR

WEST & NORTH FACADES LOOKING SOUTHEAST





Mapped, edited, and published by the Geological Survey  
Control by USGS and USC&GS  
Topography by photogrammetric methods from aerial  
photographs taken 1967. Field checked 1969  
Polyconic projection. 1927 North American datum.  
10,000-foot grid based on Arkansas coordinate system, north zone  
1000-meter Universal Transverse Mercator grid ticks,  
zone 15, shown in blue  
To place on the predicted North American Datum 1983  
move the projection lines 6 meters south and  
17 meters east as shown by dashed corner ticks  
There may be private inholdings within the boundaries of  
the National or State reservations shown on this map  
Revisions shown in purple and woodland compiled in cooperation with  
U. S. Forest Service from aerial photographs taken 1980-81 and other sources  
Partially field checked by U. S. Forest Service. Map edited 1983



MOUNTAINBURG SE, ARK.  
N3530—W9400/7.5

1969  
PHOTOREVISED 1983  
DMA 7155 II SE—SERIES V884





**The Department of  
Arkansas  
Heritage**

Mike Beebe  
Governor

Cathie Matthews  
Director

Arkansas Arts Council

\*

Arkansas Natural Heritage  
Commission

\*

Delta Cultural Center

\*

Historic Arkansas Museum

\*

Mosaic Templars  
Cultural Center

\*

Old State House Museum



**Arkansas Historic  
Preservation Program**

1500 Tower Building

323 Center Street

Little Rock, AR 72201

(501) 324-9880

fax: (501) 324-9184

tdd: (501) 324-9811

e-mail:

[info@arkansaspreservation.org](mailto:info@arkansaspreservation.org)

website:

[www.arkansaspreservation.org](http://www.arkansaspreservation.org)

An Equal Opportunity Employer



August 1, 2007

Dr. Janet Matthews  
Chief of Registration  
United States Department of the Interior  
National Register of Historic Places  
National Park Service  
8th Floor  
1201 Eye Street, NW  
Washington, DC 20005

RE: Bryant-Lasater House – Mulberry, Crawford County,  
Arkansas

Dear Dr. Matthews:

We are enclosing for your review the above-referenced nomination. The Arkansas Historic Preservation Program has complied with all applicable nominating procedures and notification requirements in the nomination process.

If you need further information, please call Ralph S. Wilcox of my staff at (501) 324-9787. Thank you for your cooperation in this matter.

Sincerely,

Cathie Matthews  
State Historic Preservation Officer

CM:rsw

Enclosure