



APR 14 1978

Wetmore House

Piedmont, Alameda County, Ca.

Alice B. Erskine
1961

OCT 18 1977

342 Bonita Ave., Piedmont, Ca.

West side of one story, clapboard house
showing veranda with turned posts, balustrade
and classic cornice. #13



Wetmore House

OCT 18 1977

Piedmont, Alameda County, Ca.

Alice P. Erskine

1961

342 Bonita Ave., Piedmont, Ca.

North side of the house.

APR 14 1978

#2 of 14



Wetmore House

OCT 18 1977

Piedmont, Alameda County, Ca.

Alice P. Erskine

Dec. 30, 1971

342 Bonita Ave., Piedmont, Ca.

3, 13

APR 14 1978

Dec. 30, 1971

Alice Erskine - 342 Bonita Ave., Piedmont, Ca. 94611



Wetmore House

Piedmont, Alameda County, Ca. OCT 18 1977

Alice P. Erskine
1958

342 Bonita Ave., Piedmont, Ca.
Piedmont, Ca.

Front veranda with the vestibule project-
ing into it, opening to the West.

4813

APR 14 1978



Wetmore House

Piedmont, Alameda County, Ca.

Jeffrey E. Wetmore

OCT 18 1977

1971

342 Bonita Ave., Piedmont, Ca.

Detail of turned posts of the balustrade
on the West veranda.

APR 14 1978

5 813



Wetmore House

Piedmont, Alameda County, Ca.


Jeffrey E. Wetmore

1971

342 Bonita Ave., Piedmont, Ca.

Detail of newel post at end of long
flight of stairs leading to main en-

trance at the center of the West
veranda.

#6  13

OCT 18 1977

APR 14 1978



Wetmore House

Piedmont, Alameda County, Ca.

Alice P. Erskine

1961

342 Bonita Ave., Piedmont, Ca.

Ornamented wood partition with door to
South veranda. Details of spindle Frieze,
hand-sawn knee brace brackets and crest-

ing on the partition.

7 of 13

OCT 18 1977

APR 14 1978



Wetmore House

Piedmont, Alameda County, Ca.

Jeffrey E. Wetmore

1971

342 Bonita Ave., Piedmont, Ca.

East slope of the shingled hipped roof.
The original hand-sawn redwood crest-

ing has been removed as have the finials over each post on the veranda. These have been preserved and only the two finials on the ridge remain in place.

#8 ~~1017~~
APR 14 1978

OCT 18 1977



Wetmore House

Piedmont, Alameda County, Ca.

Jeffrey E. Wetmore

1971

342 Bonita Ave., Piedmont, Ca.

Cast iron chimney servicing the Franklin stove in the dining room is on

the flat tin roof, northeast corner of the house.

#9 213

OCT 18 1977

APR 14 1978



OCT 18 1977

Wetmore House

Piedmont, Alameda County, Ca.

Jeffrey E. Wetmore

APR 14 1978

1971

342 Bonita Ave., Piedmont, Ca.

North face of the carriage house.

#10 813



Wetmore House

Piedmont, Alameda County, Ca.

Alice P. Erskine

1958

342 Bonita Ave.. Piedmont, Ca.

East side of the house, partial view.

The door opens into the kitchen. A

similar door leads to the dining room.

#112 2 13

OCT 18 1977

APR 14 1978



OCT 18 1977

Wetmore House

Piedmont, Alameda County, Ca.

Alice P. Erskine

APR 14 1978

1961

342 Bonita Ave., Piedmont, Ca.

South side showing the continuation of
the enclosure of the south veranda.

#12 → 13



Wetmore House

OCT 18 1977

Piedmont, Alameda County, Ca.

Alice P. Erskine
1958

APR 14 1978

342 Bonita Ave., Piedmont, Ca.

East side of the house, partial view.

The door opens into the dining room.

~~130~~ 130 ~~17~~ 17



WETMORE HOUSE

BACK - East

APR 14 1978

ALAMEDA County
342 Bonita Ave.,
Piedmont, Ca., 94611

Owner: Alice P. Erskine

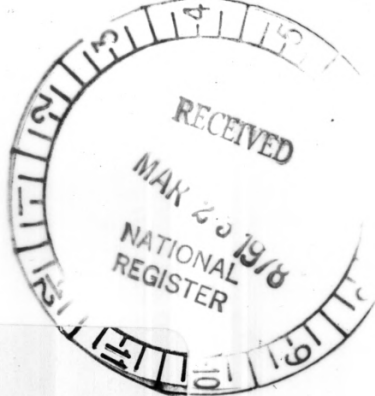
February 1978

14917

Negative filed with Mrs. Erskine







WETMORE HOUSE

FRONT - West

Alameda County

342 Bonita Ave.,

Piedmont, Ca., 94611

Owner: Alice P. Erskine

APR 14 1978

February 1978

Negative filed with Mrs. Erskine

15 of 17





PROPERTY OF THE NATIONAL REGISTER

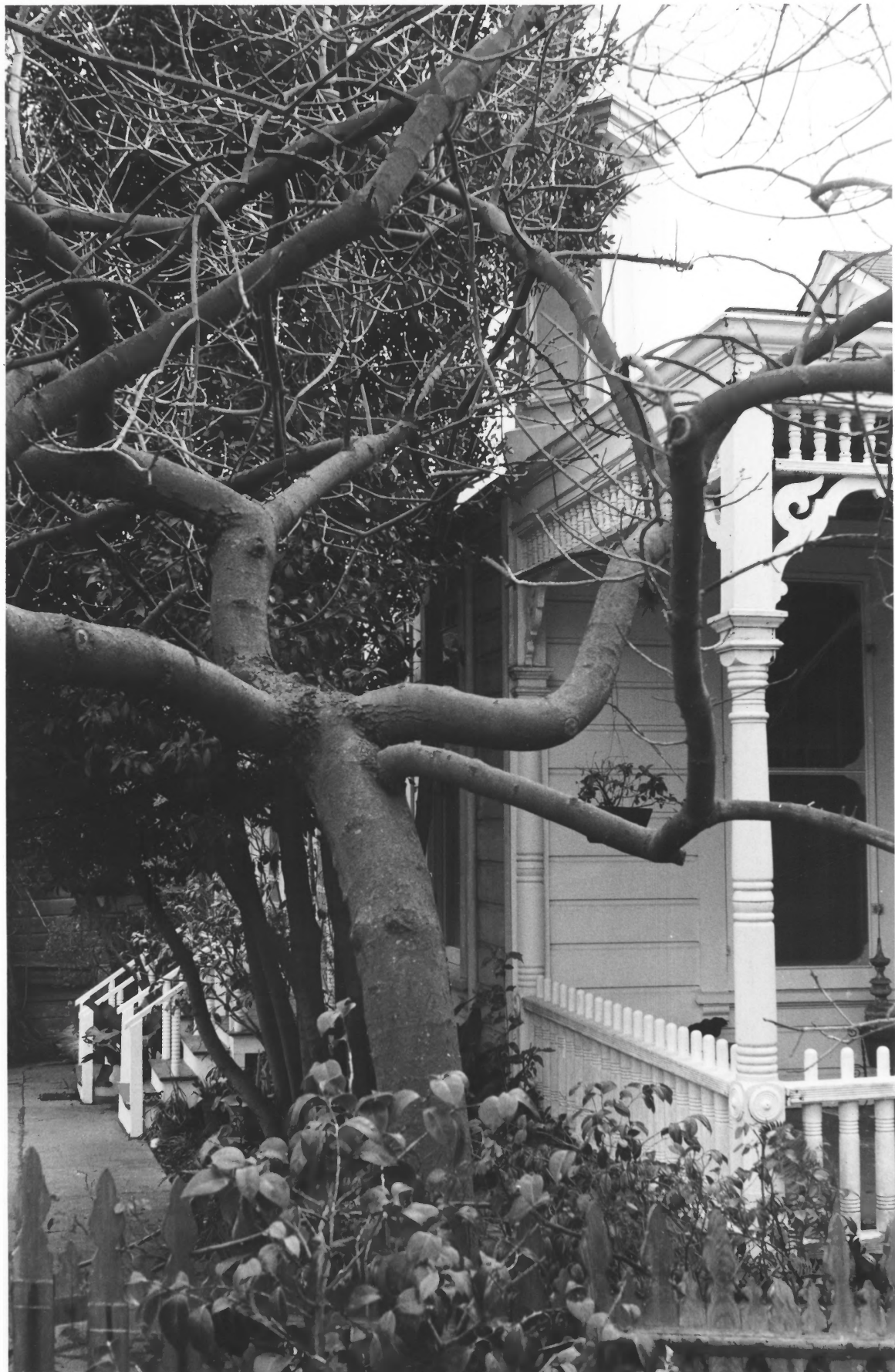
WETMORE HOUSE
North Side

342 Bonita Ave.,
Biedmont, Ca., 94611
Alameda County
Owner: Alice P. Erskine

APR 14 1978

February 1978
Negative filed with Mrs. Erskine

16g17



PROPERTY OF THE NATIONAL REGISTER

WETMORE HOUSE

APR 14 1978

North-East Corner

342 Bonita Ave.,
Piedmont, Ca., 94611

Alameda County
Owner: Alice P. Erskine

February 1978

Negative filed with Mrs. Erskine

17017

