



BIG HOLE PUMPING STATION

1/21

Near Divide, MT

SEP 24 1980

Silver Bow County

Historic photograph of Pump

Station, ca. 1906

Photographer unknown

JUL 15 1980



BIG HOLE PUMPING STATION

Near Divide, MT

Silver Bow County

Pump Station from Northeast

Photo & Neg: Mike Patterson

JUL 15 1980

124 W. Granite ST.

Butte, MT

March 1979

SEP

#2/21
24 1980



BIG HOLE PUMPING STATION

#3 $\frac{1}{2}$

Near Divide, MT

JUL 15 1980

Silver Bow County

Pump Station from the north

Photo & Neg: Miles Tuttle

Engineer at Big Hole Station

March 1980

SEP 24 1980



BIG HOLE PUMPING STATION

#4
21

Near Divide MT

Silver Bow COUNTY

JUL 15 1980

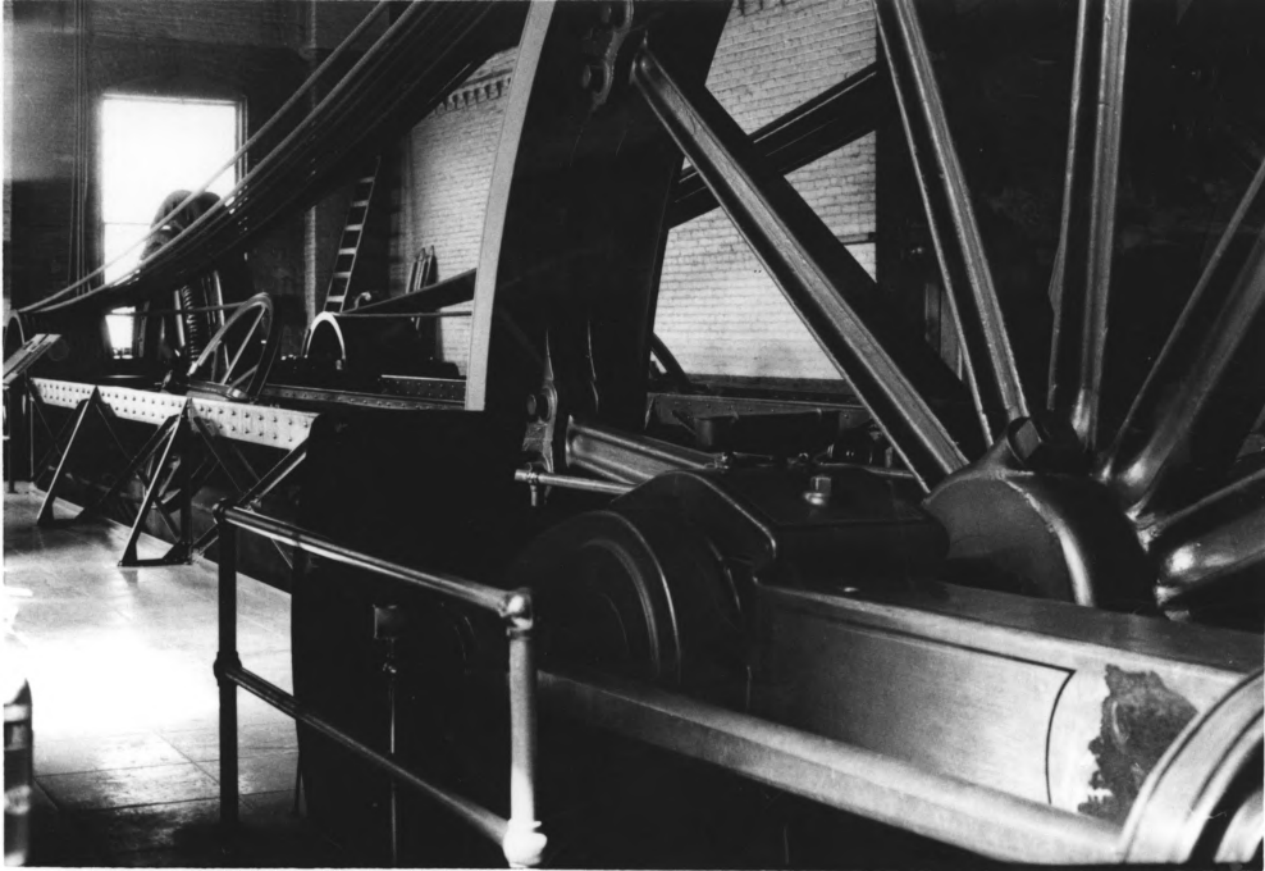
#2 Pump

Photo: Miles Tuttle

Engineer at Big Hole Station

March 1890

SEP 24 1980



BIG HOLE PUMP STATION

#5 / 21

Near Divide, MT

Silver Bow County

JUL 15 1980

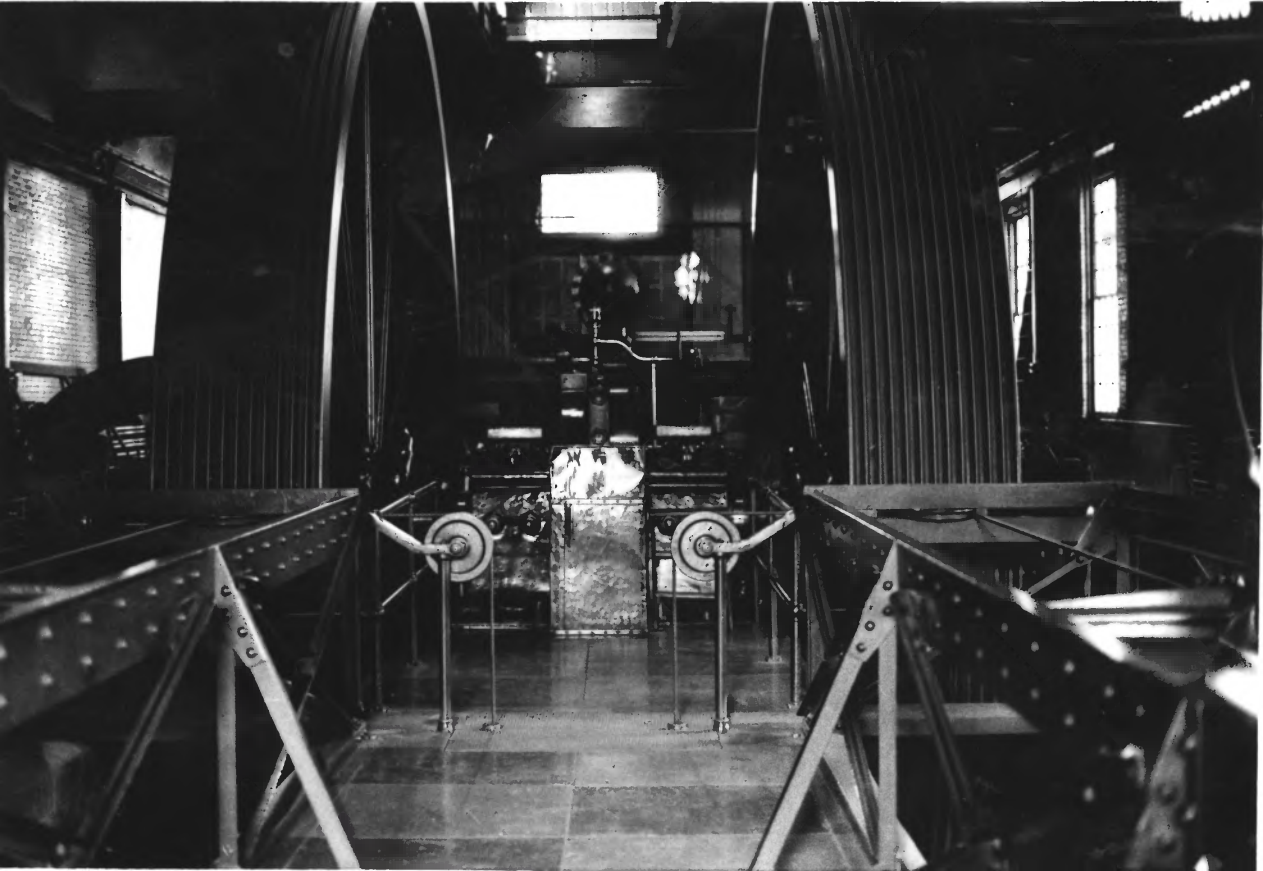
Pump #2, showing 24' wheel

Photo : Miles Tuttle

Engineer at Big Hole Station

1980

SEP 2 1980



BIG HOLE PUMP STATION

#6/21

Near Divide, MT

Silver Bow County

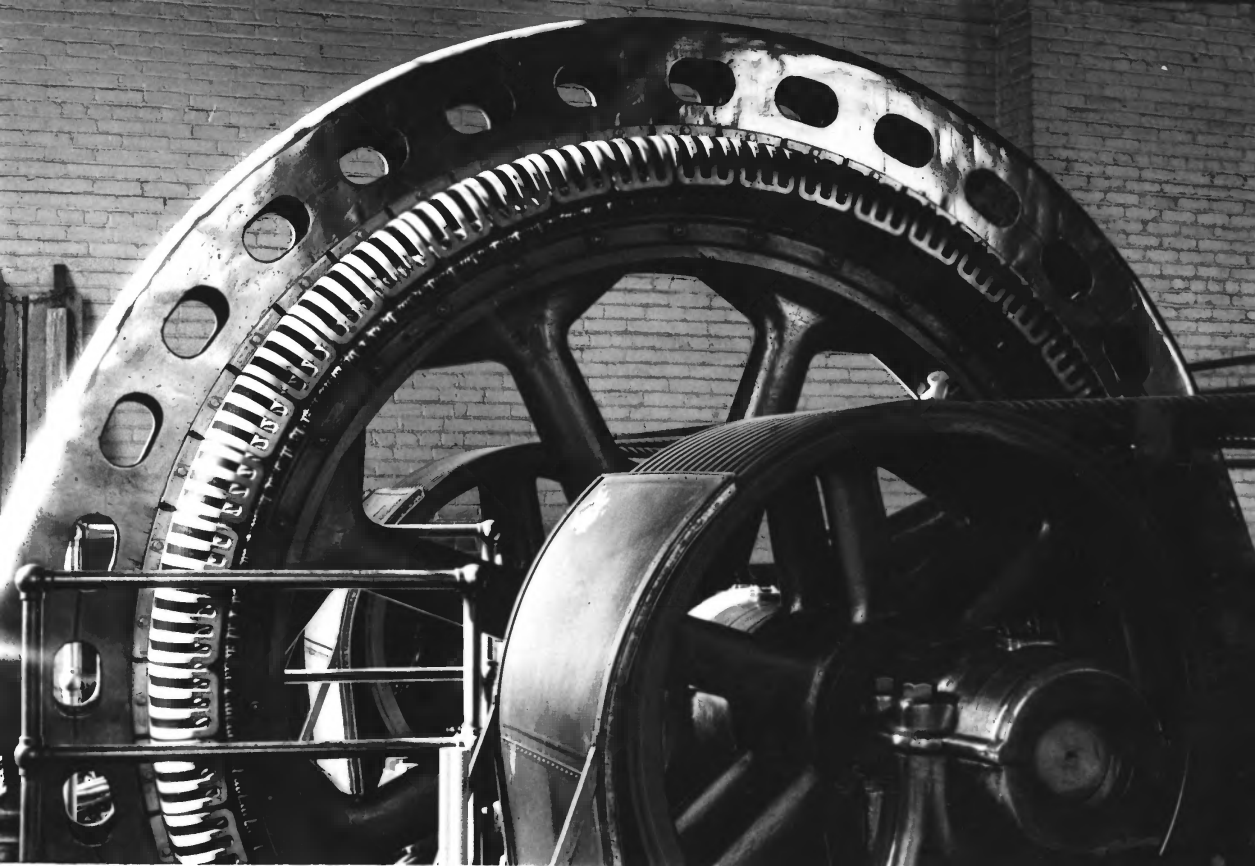
Pump #2, showing double wheels
strung with 1800 continuous feet
of manilla hemp.

Photo: Miles Tuttle

JUL 15 1980

1980

CED 2 1 1980



BIG HOLE PUMPING STATION

#7/21

Near Divide, MT

Silver Bow County

Pump #2 : Motor and drive wheels

Photo: Miles Tuttle

Engineer at Big Hole Station

1980

SEP 24 1980

JUL 15 1980



BIG HOLE PUMPING STATION

#8/21

Near Divide, MT

Silver Bow County

Engine Room #1

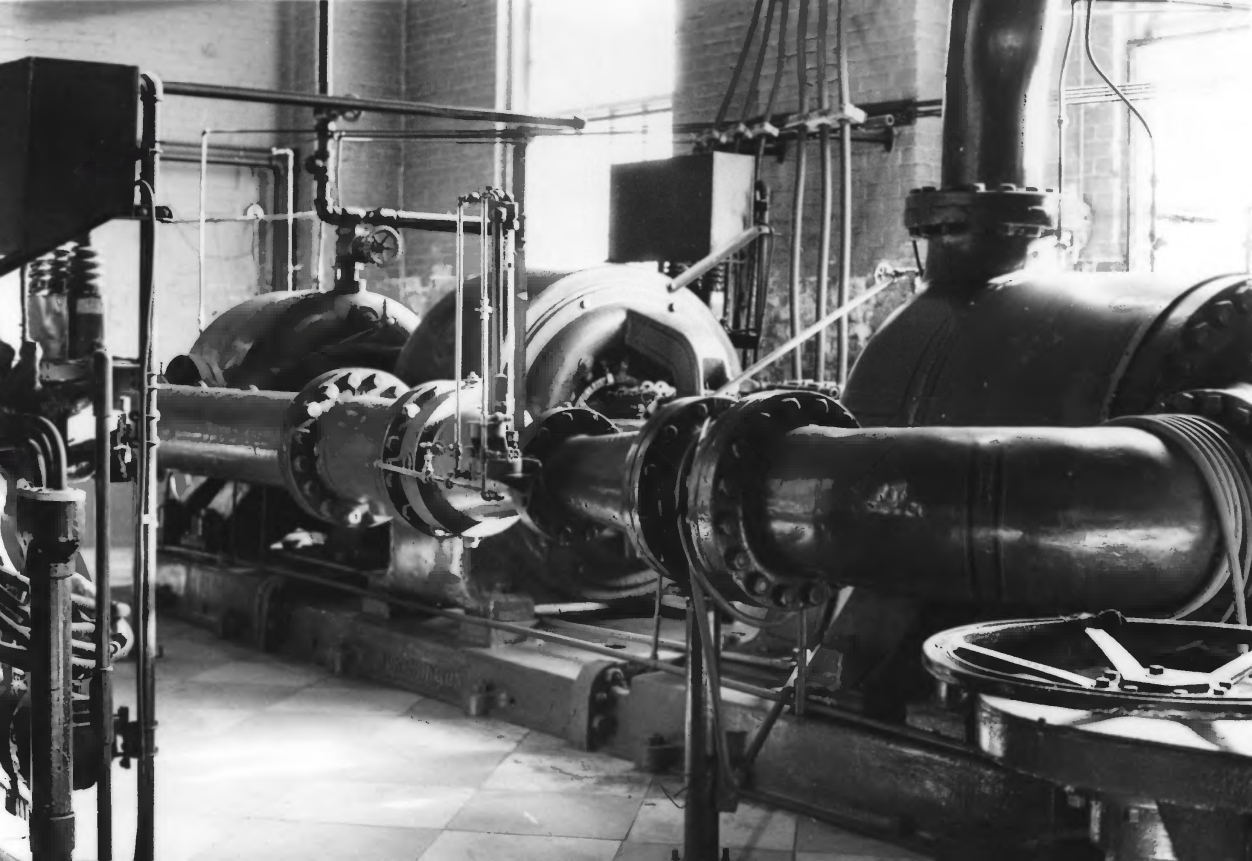
Photo: Miles Tuttle

Engineer at Big Hole Station

1980

JUL 15 1980

SEP 24 1980



BIG HOLE PUMPING STATION

#9/24

Near Divide, MT

Silver Bow County

Pump #3 (1916)

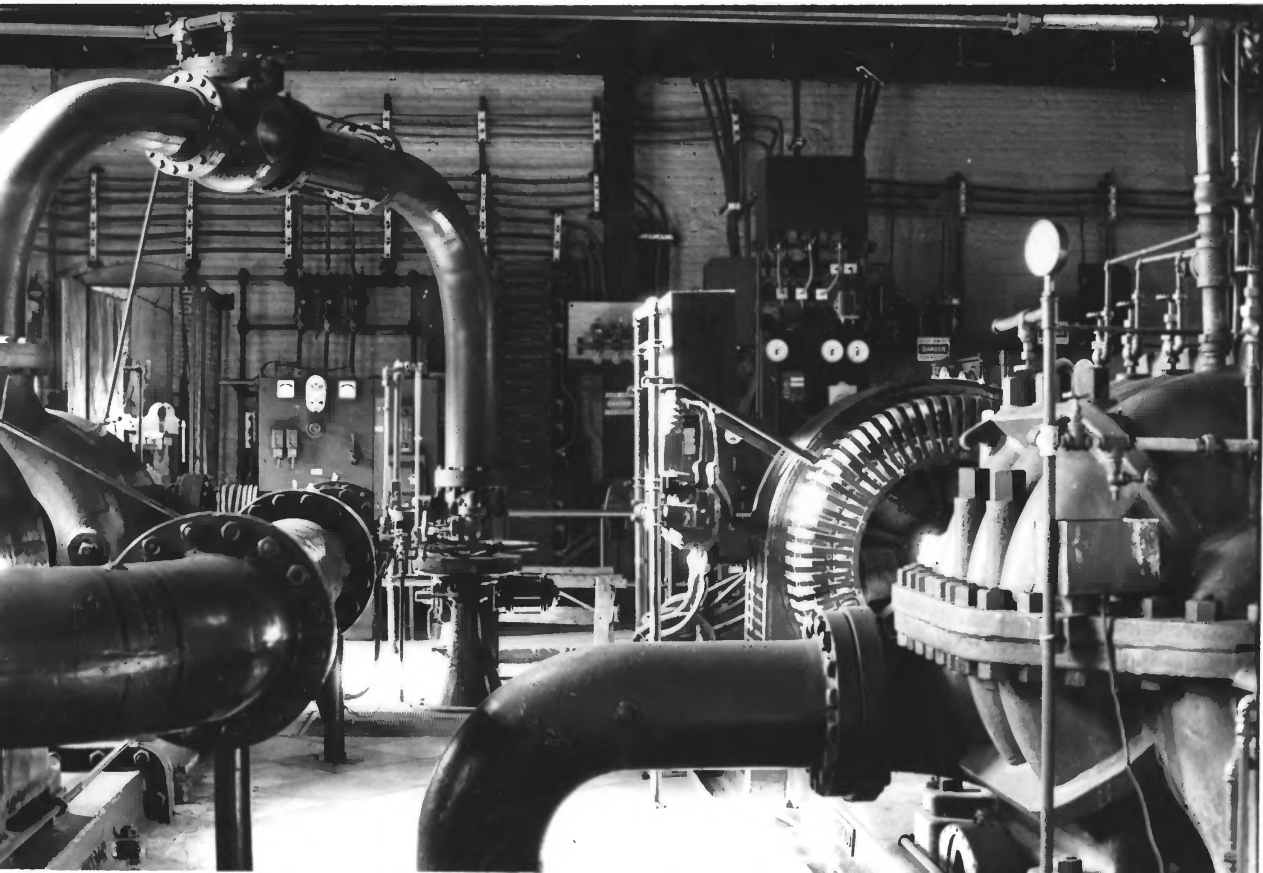
JUL 15 1980

Photo: Miles Tuttle

Engineer at Big Hole Station

1980

SEP 24 1980



BIG HOLE PUMPING STATION

#10 ~~21~~

Near Divide, MT

Silver Bow County

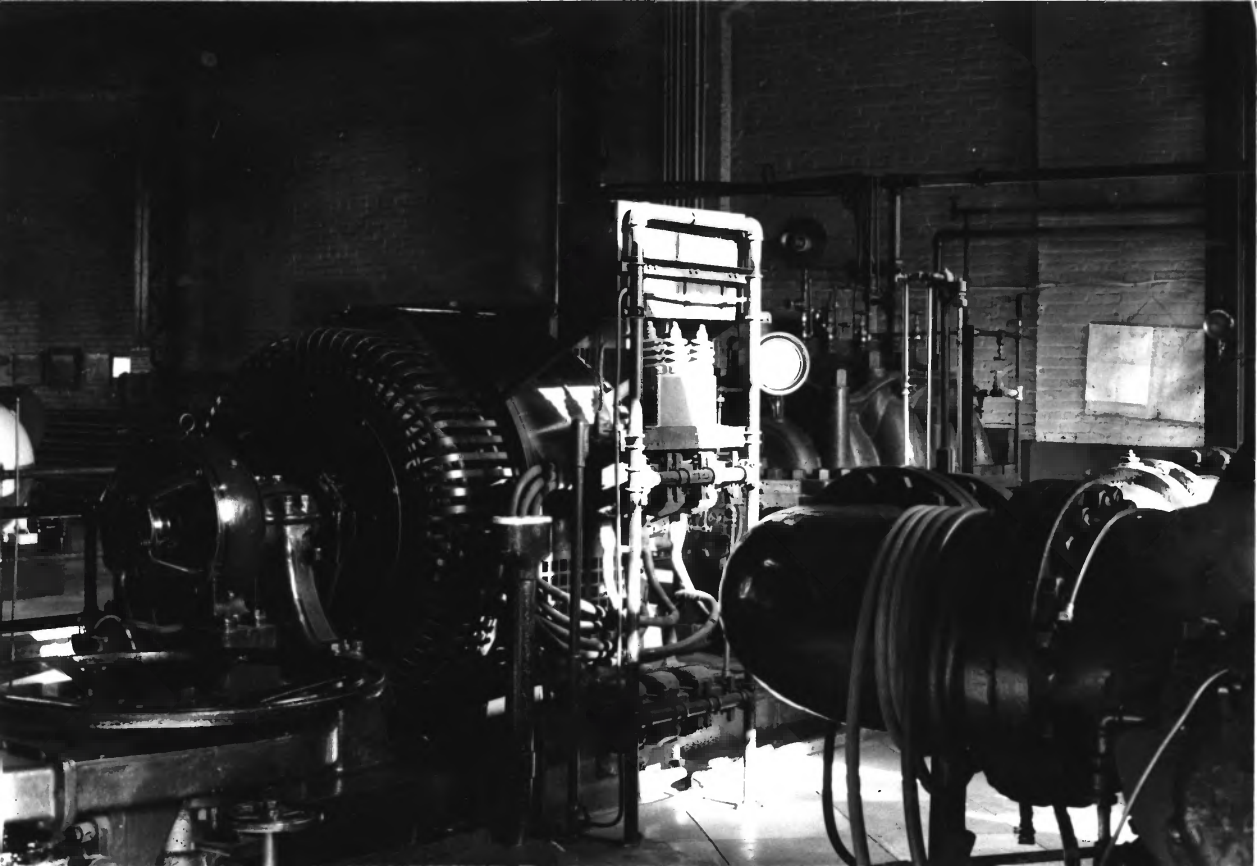
Pump #4 and half of #3 **JUL 15 1980**

Photo: Miles Tuttle

Engineer at Big Hole Station

1980

SEP 24 1980



BIG HOLE PUMPING STATION

#11

2/21

Near Divide, MT

Silver Bow County

JUL

15

1980

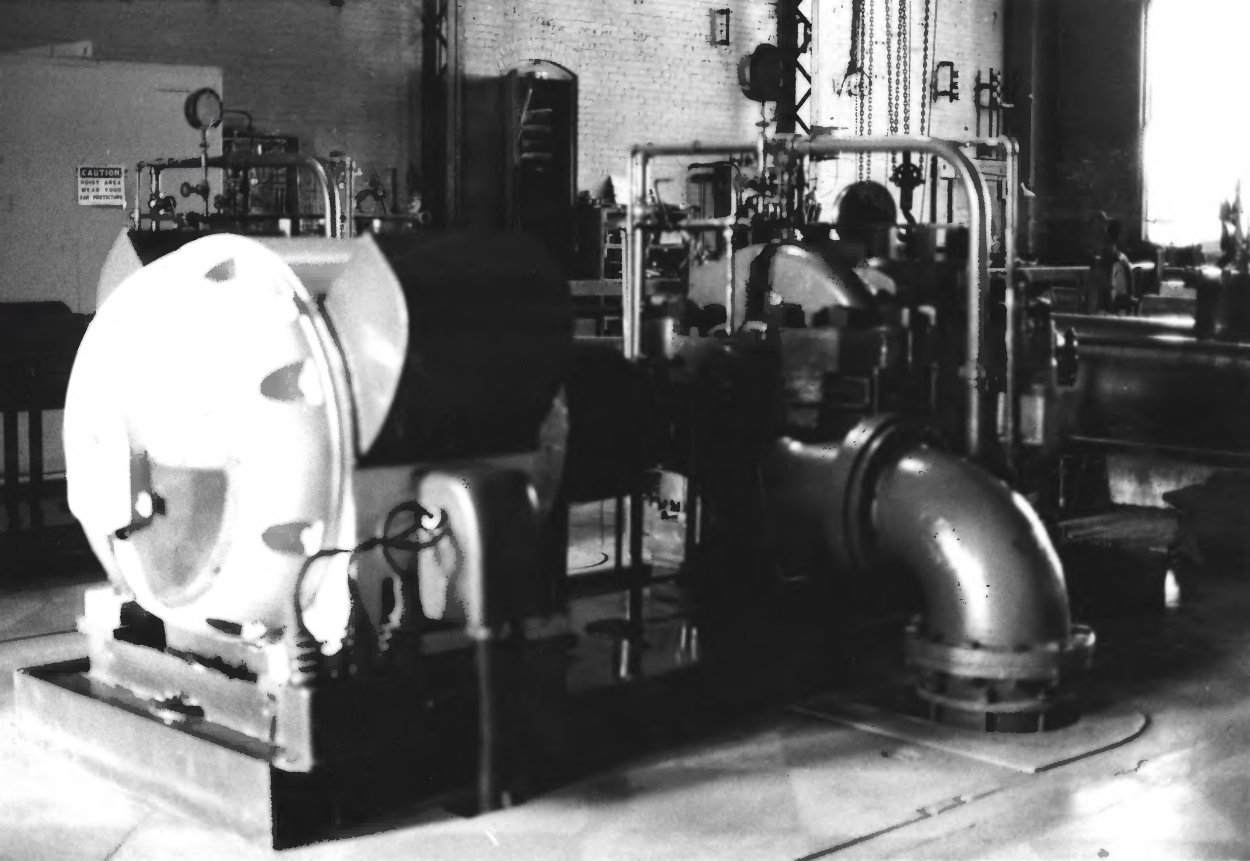
Pump #4 (1930)

Photo: Miles Tuttle

Engineer at Big Hole Station

1980

SEP 24 1980



CAUTION
HOT AREA
WEAR YOUR
HELMET

BIG HOLE PUMPING STATION

#12/21

Near Divide, MT

Silver Bow County

Pump #5 (1954)

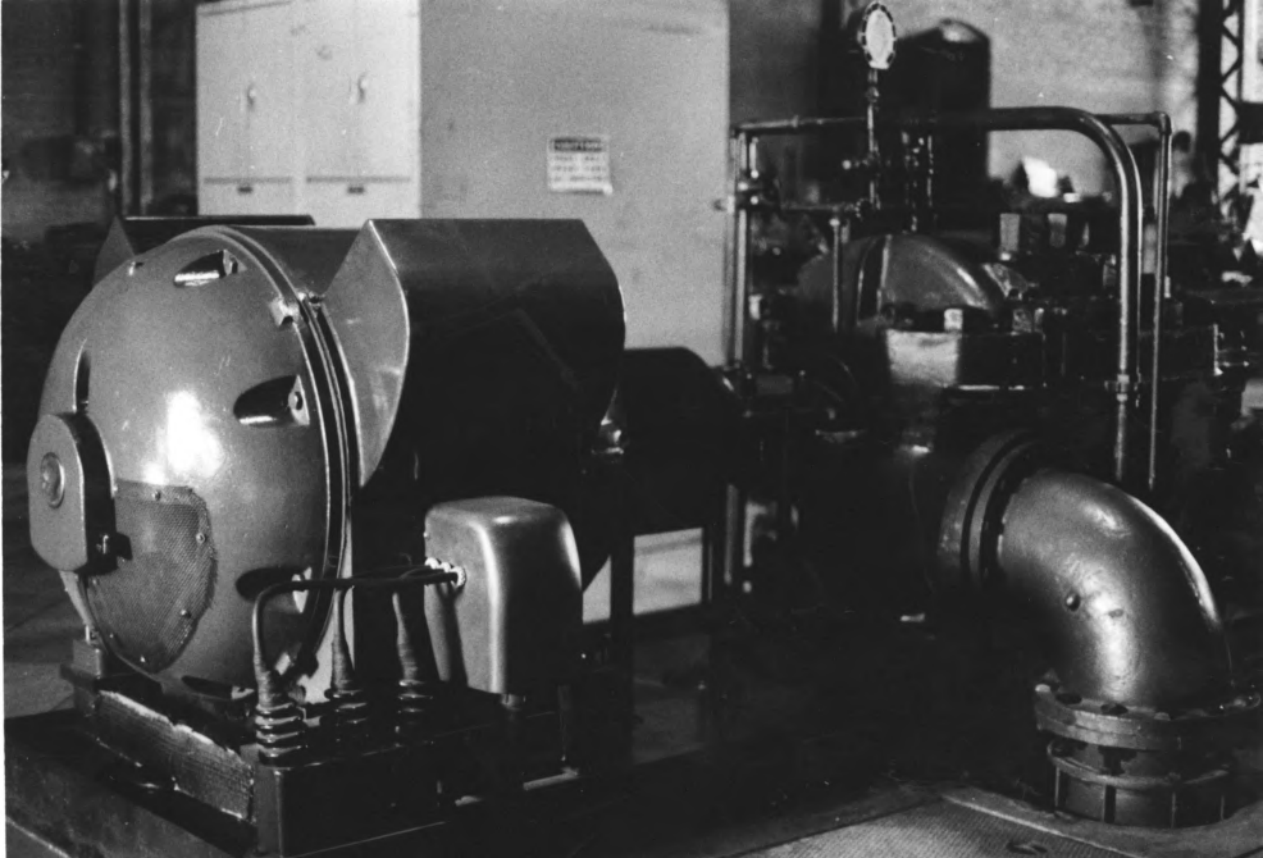
Photo: Miles Tuttle

JUL 15 1980

Engineer at Big Hole Station

1980

SEP 21 1980



BIG HOLE PUMPING STATION

#13

2

Near Divide, MT

Silver Bow County

Pump #6 (1954)

Photo: Miles Tuttle

Engineer at Big Hole Station

1980

JUL 15 1980

SEP 21 1980



BIG HOLE PUMPING STATION

14
21

Near Divide, Montana

Silver Bow County

JUL 15 1980

Engineer's House, Front View

Photot & Neg: P. Bick, Pres.

Office, Helena, MT

April, 1980 -

SEP 24 1980



BIG HOLE PUMPING STATION

#15/21

NEAR DIVIDE, MT

Silver Bow County

JUL 15 1980

Engineer's House. rear view

Photo: Miles Tuttle

Engineer at Big Hole Station

1980

SEP 24 1980



BIG HOLE PUMPING STATION

#16/21

Near Divide, MT

Silver Bow County

The Boarding House

JUL

15 1980

Photo: Miles Tuttle

Engineer at big Hole Station

1980

SEP 24 1980



BIG HOLE PUMPING STATION

#17 1/2

Near Divide, MT

Silver Bow County

JUL 15 1980

Employee's House #1 (1915).

Photo: Miles Tuttle

Engineer at the Big Hole Station

1980

SEP 24 1980



BIG HOLE PUMPING STATION

#18/21

Near Divide, MT

Silver Bow County

Employee's House #2 (1937) JUL 15 1980

Photo: Miles Tuttle

Engineer at the Big Hole Station
1980

SEP 24 1980



SEP 24 1980

BIG HOLE PUMPING STATION

#19

21

Near Divide, MT

Silver Bow County

JUL 15 1980

Employee's House #3 (1937)

Photo: Miles Tuttle

Engineer at the Big Hole Station
1980



1989 BIG HOLE PUMPING STATION

#20/24

Near Divide, Montana

4 Silver Bow County

JUL 15 1980

2 Concrete Diversion Dam and zip
wire to aid in rescue of canoeists
trapped in backwash currents.

SEP

Photo & Neg: P. Bick

Office of Hist. Pres. Helena, MT



BIG HOLE PUMPING STATION

#~~28~~

Near Divide, Montant

Silver Bow Gounty

Station from the east

Photo & Neg: P. Bick, Pres. Office

Helena, Montana

April 1980

JUL 15 1980
21/21
SEP 24 1980