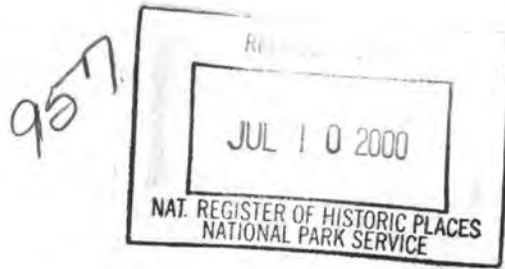


United States Department of the Interior
National Park Service

National Register of Historic Places
Registration Form



This form is for use in nominating or requesting determinations for individual properties and districts. See instructions in How to Complete the National Register of Historic Places Registration Form (National Register Bulletin 16A). Complete each item by marking "x" in the appropriate box or by entering the information requested. If any item does not apply to the property being documented, enter "N/A" for "not applicable." For functions, architectural classification, materials, and areas of significance, enter only categories and subcategories from the instructions. Place additional entries and narrative items on continuation sheets (NPS Form 10-900a). Use a typewriter, word processor, or computer, to complete all items.

1. Name of Property

historic name West Dennis Graded School

other names/site number Dennis Community Center

2. Location

street & number 67 School Street not for publication

city or town Dennis vicinity

state Massachusetts code MA county Barnstable code 002 zip code 02670

3. State/Federal Agency Certification

As the designated authority under the National Historic Preservation Act of 1986, as amended, I hereby certify that this nomination request for determination of eligibility meets the documentation standards for registering properties in the National Register of Historic Places and meets the procedural and professional requirements set forth in 36 CFR Part 60. In my opinion, the property meets does not meet the National Register Criteria. I recommend that this property be considered significant nationally statewide locally. (See continuation sheet for additional comments.)

Judith B. McDonough
Signature of certifying official/Title Judith B. McDonough, Executive Director
Massachusetts Historical Commission, State Historic Preservation Officer

7/3/2000
Date

State or Federal agency and bureau

In my opinion, the property meets does not meet the National Register criteria. (See continuation sheet for additional Comments.)

Signature of certifying official/Title

Date

State or Federal agency and bureau

4. National Park Service Certification

- I, hereby certify that this property is:
- entered in the National Register
 See continuation sheet.
 - determined eligible for the National Register
 See continuation sheet.
 - determined not eligible for the National Register
 - removed from the National Register
 - other (explain): _____

Signature of the Keeper

Patrick Anderson

Date of Action

8/24/00

West Dennis Graded School
Name of Property

Barnstable County, Massachusetts
County and State

3. Classification

Ownership of Property

private
 public-local
 public-State
 public-Federal

Category of Property

building(s)
 district
 site
 structure
 object

Number of Resources within Property

Contributing

1

Non contributing

buildings
sites
structures
objects
Total

1

Number of contributing resources previously listed in the National Register

N/A

Name of related multiple property listing

(enter N/A if property is not part of a multiple property listing)
N/A

6. Function or Use

Historic Functions

(Enter categories from instructions)

Education: school
Government: meeting hall

Current Functions

(Enter categories from instructions)

Social: meeting hall

7. Description

Architectural Classification

(Enter categories from instructions)

Mid-19th century: Greek Revival

Materials

(Enter categories from instructions)

Foundation: brick, concrete
Walls: wood shingle, wood clapboard
Roof: wood shingle; asphalt shingle

Narrative Description

(Describe the historic and current condition of the property on one or more continuation sheets)

See Continuation Sheets

**United States Department of the Interior
National Park Service****National Register of Historic Places
Continuation Sheet****West Dennis Graded School
Dennis (Barnstable Co.), MA**Section number 7 Page 1**Narrative Description**

The 1867 Greek Revival style West Dennis Graded School is a two story, wood frame building with a rectangular plan, a side-gable roof, and a full-length front verandah. The front facade and north elevation are sheathed with wood clapboards while the remaining elevations and the roof are covered with wood shingles. The slightly larger than residential scale, large 8/8 windows, double entrance, and cupola/belfry all distinguish the building as a schoolhouse. Its materials and simplicity of mass and detail are otherwise typical of the historic regional vernacular. The interior retains many original features especially at the second story where the two-classroom plan survives along with characteristic elements such as blackboards, beadboard wainscoting, and plaster walls and ceilings. The school is located in a pleasant, densely developed residential neighborhood in the village of West Dennis. It faces School Street over a paved semi-circular driveway and a wooden post and rail fence. The building is in fair condition and retains the majority of its character-defining elements which are based on the dual themes of symmetry and simplicity.

The West Dennis Graded School remains on its original site at the southwest corner of Pond and School Streets in Dennis, Massachusetts. Dennis is located mid-way on the Cape Cod peninsula where it is bordered by Cape Cod Bay (N), the Towns of Brewster and Harwich (E), Nantucket Sound (S), and the Town of Yarmouth (W). The town encompasses five village clusters: Dennis Village and East Dennis on Cape Cod Bay, South Dennis on the upper Bass River, and West Dennis and Dennis Port on Nantucket Sound. The village of West Dennis straddles State Route 28 in the southwest corner of the town. The South Dennis Historic District (local district; 5/9/74) is located to the north. Important topographic features in the vicinity of the school include Weir Creek and its associated wetlands immediately to the east, and Kelley's Pond and the large tidal waterway known as Bass River to the west.

School Street runs north-south between State Route 28 and Lower County Road, both of which are important east-west regional thoroughfares. The school is located one block south of Route 28 where the majority of the historic commercial and institutional buildings of West Dennis village are concentrated. A small cluster of recent commercial buildings appears immediately south of the school on the site of a former shoe factory and across School Street. The remainder of the neighborhood is residential, with dwellings dating to the 18th, 19th, and 20th centuries. All are modest in scale, materials, and design, reflecting the historic regional vernacular. The scale, massing, materials, and detail of the school complement its surroundings.

The building occupies the northeast corner of a level .93 acre lot where it is set back 40' from School Street and 30' from Pond Street. On the School Street side it is approached by a semi-circular driveway paved in asphalt. A cement walkway embraces the southern and western sides of the building. Turf, shrubs, and trees appear in the immediate vicinity of the building and around the perimeter of the lot which is also defined by a wooden post and rail fence, painted white. A large paved parking lot that reflects the building's use as a community center in the second half of the 20th century occupies most of the south sideyard and a substantial area behind the building. A grassy municipal playground occupies the rear of the lot, where a social hall, formerly an academy, known as Doric Hall once stood.

(continued)

United States Department of the Interior
National Park ServiceNational Register of Historic Places
Continuation SheetWest Dennis Graded School
Dennis (Barnstable Co.), MASection number 7 Page 2

The wood-frame schoolhouse rises 2 stories from a brick foundation to an overhanging side-gable roof. It consists of a four bay by three bay rectangular main block extended by a two small, one-story, gable-roof wings on the north side. A verandah runs along the entire east facade. The main block and verandah are part of the original 1867 construction while the wings were added in 1957 and 1977. The gable roof is covered with wood shingles and crowned by an open cupola/belfry consisting of eight posts with narrow collar moldings rising from a square base to a low hip roof. The cupola is similar to the original element which it replaced at an unknown date. It contains the bell from the contemporary South Dennis Graded School. Narrow stove chimneys have been removed from the gable ends. A single, narrow, brick chimney now rises along the exterior of north wall, between the main block and wing. It probably dates to ca. 1953 when central heat was installed.

The main block is sheathed with wooden clapboards on the east facade and north elevations while cedar shingles appear on the other elevations and the roof. The shingles and northside clapboards are stained gray. All trim is made of wood and painted white. Trim elements include moderately wide cornerboards, a two-part raking entablature and a molded raking cornice with narrow returns, all of which typify late examples of the Greek Revival style. Windows throughout the main block display simple molded frames with projecting heads and contain 8/8 double-hung sash. Some second story sash appears to be original; the remainder have slightly different muntin profiles but are otherwise identical and appear to date to the period of significance.

The east front facade contains two widely spaced entrances in the inner bays and a single window in each of the outer bays. The entrance frames are similar to those of the windows, consisting of molded architraves and projecting caps. They contain six-panel wooden doors equipped with brass hardware. Four windows are evenly spaced across the second story; the outer windows are aligned with those on the first story. A verandah runs across the entire first story. It consists of six slender Tuscan columns rising from a brick deck to a simple entablature and low-pitched hip roof. The brick deck dates to the 1970s.

The rear west elevation contains four evenly spaced, vertically aligned windows at each story with the exception of the inner south bay at the second story which is blank. A wooden fire escape rises along the northern half of this elevation to a second story entrance located just north of center. The fire escape and door appear to date to the 1950s. The second story window was probably removed at the same time.

The south side elevation contains three evenly spaced openings that are aligned at the first and second stories. The west bay of the first story contains a recent entrance equipped with a six-panel wooden door. Windows occupy the other two bays. Three windows are located at the second story. A fourth window existed between the central and western windows from ca. 1928 to the 1970s. A smaller window with 6/6 sash occupies the gable.

The western two-thirds of the first story of the north side elevation is covered by the wing. The eastern bay contains a single window. Four window openings are found at the second story with three grouped at the western end. As on the south elevation, the extra window was added ca. 1928 to admit more natural light to a building that lacked electricity until 1934. A smaller window with 6/6 sash occupies the gable.

(continued)

**United States Department of the Interior
National Park Service****National Register of Historic Places
Continuation Sheet****West Dennis Graded School
Dennis (Barnstable Co.), MA**Section number 7 Page 3**North Wing**

The north wing is a very simple structure that is covered with gray-stained wood shingles and rests on a concrete foundation. It consists of two small one-story rectangles enclosed by gable roofs with asphalt shingles. One part is attached to the western two-thirds of the north end of the main block. The other extends westward beyond the main block. The first part (1958) contains a small paired window with 6/6 sash in each opening on the east side and three similar windows evenly spaced across the north side. The second section (1970s) contains two windows on the west elevation and none on the north and south sides.

Interior

The original interior consisted of two large classrooms at each story in the western two-thirds, with stairwells, coatrooms, and other support spaces clustered along the east wall. It was characterized by abundant natural light, high ceilings, plaster walls and ceilings, horizontal beadboard wainscoting, paneled wooden doors, simple wooden window and door casings, and integral blackboards. Both plan and materials are typical of mid to late-19th century schoolhouses. Much of the plan and many of the materials remain intact, especially at the second story.

At the first story, the two east entries lead into a stairhall and vestibule. The stair rises southerly and westerly in two runs with an intervening, square landing. Steps and risers are both constructed of wood. Wooden rails top solid balusters. Original beadboard wainscoting remains along the upper run.

The remainder of the first story is devoted to a single large room. Two rows of three posts each divide the room roughly into thirds and support the upper stories. The lower third of the posts are encased in wood. This room was created in the early-1920s by removing the wall that originally divided it into two classrooms. In the 1970s, the original plaster ceiling was covered by suspended acoustic tiles with integral fluorescent lighting. The walls were covered with wallboard and modern pine wainscoting.

The second story contains two generously proportioned former classrooms on the west side and five smaller rooms on the east side. The classroom spaces have been altered with acoustic tile ceilings, wallboard, and linoleum tile over original wooden floorboards; the south classroom retains original blackboards on the two inner walls. The outer rooms retain original finishes including plaster walls and ceilings, horizontal beadboard wainscoting, and four panel wooden doors. Former cloakrooms are equipped with coat hooks.

Summary of Alterations

The West Dennis Graded School is a well-preserved example of its period and type. Most changes occurred in three discrete periods: the early-1920s when town meeting use was accommodated, the early-1950s when it was converted to a community building, and the 1970s when a conscious decision was made to save rather than replace this important community landmark. Alterations are discussed above and summarized below.

(continued)

**United States Department of the Interior
National Park Service****National Register of Historic Places
Continuation Sheet**Section number 7 Page 4**West Dennis Graded School
Dennis (Barnstable Co.), MA****Original Appearance**

Early photographs, maps, and written statements all describe a building very similar to the one that survives today. It consisted of a two story rectangular main block under a side-gable roof and fronted by a full verandah. Narrow stove chimneys rose through the roof ridge, inside the end walls. The exterior may have been entirely sheathed with wooden clapboards rather than today's combination of clapboards and shingles. Large windows contained 8/8 sash.

1920s Alterations

In 1922-23 the West Dennis School was remodeled to serve as a town meeting hall and village polling place in addition to its school use. The most significant change was to the interior of the first story where the wall that separated the two classrooms was removed. Additional windows were added to the second story north and south end walls to provide better light to the classrooms ca. 1928 and electricity was finally installed in 1934.

1950s Alterations

In the early-1950s the former West Dennis Graded School was renamed as the Dennis Community Center and once again several changes were made to accommodate the new use. The most important included the construction of a small wing on the north side to accommodate kitchen and toilet facilities, the installation of central heat and a new electric system, and a project to reshingle the roof. At the same time the wooden trim was repainted, and cement piers under the building were added. On the outside of the building a parking lot was added. A kitchen wing was added to the north side of the building in 1958.

1970s Alterations

More extensive renovations took place in the early-1970s to correct structural and maintenance deficiencies and to bring the building up-to-date. Exterior changes included an addition of a second wing to the north side for handicapped toilet facilities, and a new cedar shingle roof. The replacement of the wooden verandah flooring with a brick deck and the repair of columns was accompanied by window repair and exterior painting. Most importantly, the cupola was reconstructed and a bell from the South Dennis School installed.

In 1986 six columns were added to the large first floor meeting room to support the sagging upper story.

(continued)

**United States Department of the Interior
National Park Service****National Register of Historic Places
Continuation Sheet****West Dennis Graded School
Dennis (Barnstable Co.), MA**Section number 7 Page 5**1999 Plans**

The Town of Dennis has recently received Massachusetts Preservation Projects Fund grant to ensure its continued existence in the 21st century. The proposed work includes stabilization, maintenance, and restoration of original features.

Important exterior items include:

- Replace all east, west, south wall siding, and selective replacement on the north wall;
- Replace wood shingle roofing;
- Repair and paint columns and exterior trim;
- Rebuild cupola;
- Repair windows and doors;

Important interior items include:

- Replace suspended acoustical tile ceilings with plaster;
- Replace fluorescent lights with drop lights;
- Replace knotty pine wainscot with horizontal bead board;
- Replace fiberboard walls with plaster;
- Remove linoleum flooring where present.

Archaeological Description

While no prehistoric sites are recorded on the school property, it is possible that sites are present. Fifteen prehistoric sites are recorded in the general area (within one mile). Environmental characteristics of the area represent several locational attributes (slope, soil drainage, distance to wetlands) that are favorable indicators for many types of prehistoric sites. The school property is located on an excessively drained relatively level landscape formed in glacial outwash deposits. Weir Creek wetlands are located in close proximity (within 1000 feet) of the property. Bass River and Nantucket Sound are also located approximately one-half mile from the school. Given the above information, known prehistoric settlement for the Bass River and mid-Cape locales, the size of the property (.93 acres) and impacts related to school construction, a moderate to high potential exists for the location of prehistoric resources on the school property.

A moderate potential exists for locating historic archaeological resources on the school property. Additional historical research combined with archaeological survey and testing can determine whether structural evidence of outbuildings or occupational related features (trash pits, privies, wells) exist on the property. These resources could be associated with building and grounds use of the structure after its construction as a school in 1867, remodeling to accommodate town meeting and voting in 1922-23 or its conversion to a community center in 1951. Historic land use has not been identified for the property prior to 1867.

(end)

West Dennis Graded School
Name of Property

Barnstable County, Massachusetts
County and State

8. Statement of Significance

Applicable National Register Criteria

(Mark "x" in one or more boxes for the criteria qualifying the property for National Register listing)

A Property is associated with events that have made a significant contribution to the broad patterns of our history.

B Property is associated with the lives of persons significant in our past.

C Property embodies the distinctive characteristics of a type, period, or method of construction or that represent the work of a master, or possesses high artistic values, or that represent a significant and distinguishable entity whose components may lack individual distinction.

D Property has yielded, or may be likely to yield, information important in prehistory or history,

Criteria Considerations

(Mark "x" in all the boxes that apply) N/A

Property is:

A owned by religious institution or used for religious purposes

B removed from its original location

C a birthplace or grave

D a cemetery

E a reconstructed building, object, or structure

F a commemorative property

G less than 50 years of age or achieved significance within the past 50 years

Narrative Statement of Significance

(Explain the significance of the property on one or more continuation sheets)

See continuation sheets

9. Major Bibliographic References

(Cite the books, articles, and other sources used in preparing this form on one or more continuation sheets)

See continuation sheet

Previous documentation on file (NPS)

- preliminary determination of individual listing (36 CFR 67) has been requested
- previously listed in the National Register
- previously determined eligible by the National Register
- designated a National Historic Landmark
- recorded by Historic American Buildings Survey #

Areas of Significance

(Enter categories from instructions)

Architecture

Education

Politics/Government

Period of Significance 1867-1951

Significant Dates 1867, 1922, 1931

Significant Person

(Complete if Criterion B is marked above)

Cultural Affiliation N/A

Architects/Builders (see continuation sheet)

Benjamin C. Sturgis

Primary location of additional data

- State Historic Preservation Office
- Other State agency
- Federal Agency
- Local Government
- University
- Other

Name of Repository: Dennis Historical Society

**United States Department of the Interior
National Park Service****National Register of Historic Places
Continuation Sheet**Section number 8 Page 1**West Dennis Graded School
Dennis (Barnstable Co.), MA****Narrative Statement of Significance****Introduction**

The West Dennis Graded School is a historic building of illustrious lineage having served the village and community at large in a variety of important capacities during the course of its 132 year history. It possesses integrity of location, design, setting, materials, workmanship, feeling, and associations. It is significant on the local level with a period of significance extending from its construction in 1867 to 1951 when it was converted from town meeting hall to community center. In the post-1951 period, the building has continued to serve an important role, but does not meet the test of exceptional significance established by the National Register criteria.

The West Dennis Graded School meets criterion A with primary significance in the areas of education and politics/government. It has been a graded school and a high school, a town meeting hall and a polling place, a community gathering spot and a rallying point for community pride and preservation. The school also meets criterion C as a well preserved representation of mid-19th century schoolhouse architecture and as a good example of the Greek Revival style applied to a public institutional building. It is the only extant example of five similar mid-19th century schoolhouses in Dennis and survives with the majority of important exterior and interior features intact. In addition, it is one of the oldest surviving schoolhouses of its type on Cape Cod.

History and Significance

Dennis was settled in the mid-17th century as part of the neighboring town of Yarmouth. It was set off as the East Parish in 1721 and incorporated as an independent town in 1793. Typical of the region, early settlement was concentrated on the north side of town on the shores of Cape Cod Bay and the economy was based on a mix of agricultural and maritime enterprises. By the late-18th century, the population had grown to approximately 1,000 divided among five villages including Dennis Village and East Dennis on Cape Cod Bay to the north, South Dennis on the upper Bass River, and West Dennis and Dennis Port on Nantucket Sound to the south.

Education was first mentioned in local records in 1691 when a roving schoolmaster was appointed. By 1770 at least two schoolhouses had been constructed, both on the northside, in Dennis Village and East Dennis. The former, known as the West Schoolhouse (NR; MHC #331) survives today as the oldest extant school building on Cape Cod. Two years after incorporation, in 1795, the new Town of Dennis was divided into school districts and additional small district schoolhouses were constructed in ensuing years.

Like most Cape Cod towns, Dennis flourished after the Revolution, largely on the strength of a diversified maritime economy. Population growth was rapid, rising to a peak of 3,662 in 1860. Much of this growth was concentrated on the southside which had better facilities for large vessels and more direct access to fishing grounds and coastal market routes. Southside growth in Dennis was recognized in 1815 with establishment of the South Parish. The Federal government acknowledged the importance of the area in 1855 when the Bass River Lighthouse was erected.

(continued)

United States Department of the Interior
National Park ServiceNational Register of Historic Places
Continuation SheetSection number 8 Page 2West Dennis Graded School
Dennis (Barnstable Co.), MA

Bass River, which is Cape Cod's largest watercourse, attracted unusually intense development to the adjacent villages of South Dennis and West Dennis. Here, enterprising citizens took full advantage of a sheltered and relatively deep harbor, improving it with wharves and other amenities. The result was a robust maritime economy that embraced fishing, coasting, and shipbuilding. The presence of 100 schooners anchored in and around Bass River was not unusual. The strength of these industries allowed them to continue well into late-19th century, long after their decline in many other Cape Cod towns.

The prosperity and population growth of the first half of the 19th century, combined with state mandates, led the town to thoroughly reorganize and modernize its school system between 1858 and 1867. During that time, five graded schools were constructed, one in each of the town's five villages. These larger consolidated structures replaced fourteen one-room district schoolhouses. The West Dennis and South Dennis schools were the last of the five to be constructed and were nearly identical in appearance. The graded schools divided children into primary, intermediate, and grammar school levels based on age and achievement, thus representing a significant improvement over the old district schools where all students were taught together.

In September, 1867, the *Register*, a local weekly newspaper, reported that the West Dennis school was expected to be ready for the winter term. It was noted that the children of the village were experiencing "sweet anticipations that almost make their mouths water to study in so large, clean, nice, convenient rooms." The new school was expected to "widen and straighten our intellectual highways. . . ."

County historian, Simeon Deyo, reported that in 1887-1888 the Dennis school population numbered 572 and that "each of the five villages had a good school building, of sufficient size to accommodate the several departments." Deyo also noted that every department was in session for nine months of the year with an average attendance rate of 90%. The Dennis Village, East Dennis, and South Dennis schools each contained a primary (grades 1-3) and a grammar school (grades 4-9) department. West Dennis and Dennis Port were the only two that included an intermediate level during that period.

In 1922-23 the West Dennis Graded School was remodeled to accommodate town meeting and voting in local, state, and national elections in addition to its educational function. The primary change to the building was removal of the wall that partitioned first floor classrooms to create a large meeting hall. The new uses assigned to the old school building were directly related to two important historic events. One was a severe decline in the economy and population of both town and region which translated into a smaller student body. In Dennis, the population had fallen to 1,822 by 1915. The other was ratification of the Nineteenth Amendment to the Constitution in 1920 that enfranchised women, and thus greatly increased the number citizens who participated in town meetings and the electoral process. The meeting space created in the West Dennis school replaced those formerly provided in the old Town House of 1837.

In the 1928 Annual Town Report, the Superintendent of Schools stated that "There are in Dennis six school buildings, three are of the four room type, one each at Dennis, South Dennis and West Dennis." He went on to describe their inadequacies, including lack of electricity, plumbing, and central heating. Outhouses provided the only toilet accommodations. Additional windows had been installed at Dennis Port, South Dennis,

(continued)

United States Department of the Interior
National Park ServiceNational Register of Historic Places
Continuation SheetSection number 8 Page 3West Dennis Graded School
Dennis (Barnstable Co.), MA

and West Dennis to obtain more light in the classrooms. This analysis was probably prompted by the *Cape Cod School Survey*, prepared for the Cape Cod Chamber of Commerce by the Harvard Graduate School of Education in 1925-26.

Classes continued to be held at the West Dennis school until 1931 when the Dennis Consolidated Elementary (Ezra Baker) School (MHC #237) opened in South Dennis. All five of the town's graded schools were closed at that time. Town meetings continued in the former West Dennis school until 1951 when a large auditorium was added to the Baker School. In addition, the West Dennis school was used as a Civil Defense and Red Cross Training center during World War II.

In 1952 the old West Dennis Graded School was renamed the Dennis Community Center and refitted to fulfill its new role of service to the town. In the 1970s, further renovations were undertaken after town meeting voted to preserve rather than replace the aging landmark. In 1999, the town received a Massachusetts Preservation Projects Fund grant from the Massachusetts Historical Commission to further assist in the building's preservation. The Dennis Community Center has been used on a daily and nightly basis by a wide variety of adult and youth groups including boy and girl scouts, the Teen Town Club, the Dennis Historical Society, and the Cape Cod Branch of University Women.

The West Dennis Graded School remains a well-preserved example of a mid-19th century schoolhouse that embodies the distinctive characteristics of its period and type. It is the only extant example of this building type to survive in Dennis and one of the few that remain in the region.

Dennis resident Benjamin C. Sturgis (1815-1889) was the builder of the West Dennis school. The design was based on the nearby Dennis Port school (non-extant). Erected in 1864-1865, the Dennis Port school reused the Nantucket Quaker Meeting House, which was disassembled and floated from the island to the mainland. Moving buildings by land and water was a common practice employed by thrifty and timber-poor Cape Codders. As seen in historic photographs, the Dennis Port School was a simply detailed, two story, wood-frame building, fronted by a full verandah, and enclosed by a side-gable roof with stove chimneys at the gable ends and a central cupola with clocks on each face of its four-sided base. The primary difference between it and the West and South Dennis Schools was its longer six bay facade. The West Dennis Graded School was almost identical to the contemporary South Dennis Graded School (non-extant) built by Isaiah C. Inman (1830-1889). Both cost about \$7,000.

The wood-frame construction, unpainted wood clapboard and shingle siding, simple massing and detail, and straightforward design of the West Dennis Graded School all reflect the regional vernacular as interpreted for a public institutional building. Exterior features that identify it as a schoolhouse include its slightly larger than residential scale, twin entries, large windows to admit maximum natural light, and crowning cupola/belfry. Interior schoolhouse features include the plan with its stairwells, cloakrooms, and classrooms, high ceilings, and blackboards. Moderately wide cornerboards, a two-part raking entablature and cornice with narrow cornice returns typify late examples of the Greek Revival style on Cape Cod.

(continued)

United States Department of the Interior
National Park ServiceNational Register of Historic Places
Continuation SheetSection number 8 Page 4West Dennis Graded School
Dennis (Barnstable Co.), MA**Archaeological Significance**

While several prehistoric sites have been identified in the Dennis area, especially along the Bass River, few sites have been systematically studied resulting in limited interpretative data usually confined to locational and typological information. As a result of these limitations, any surviving sites in the school locale could potentially be significant. Prehistoric sites in this area have the potential to contribute information relating to Native American settlement and subsistence in the town of Dennis and on a larger scale along the Bass River mid-Cape areas. Prehistoric sites in the area may provide greater documentation of Middle Archaic land use in the Bass River and Mid-Cape areas where prehistoric settlement during that period has been documented through extensive representation in surface artifact collections. Potential prehistoric sites on the school property may also contain information that documents more interior settlement of the Bass River drainage where most known sites are located in areas immediately surrounding the river. Prehistoric sites in the area may also contain information that contributes to our knowledge of prehistoric lithic technologies, especially temporal and functional preference of raw materials and variation within small-stemmed points.

Historic archaeological resources described above have the potential to document structural evidence from outbuildings that may be present on the property since 1867 and, activities related to academic and civic functions that occurred on the grounds during that period. Evidence from outbuildings might exist related to the transportation needs of teachers including carriage or horse sheds and barns and storage/maintenance facilities. Detailed analysis of the contents from occupational related features might also produce information relating to levels and methods of education at the school and the social, cultural and economic characteristics of students who attended the school. Analysis of potential refuse deposits including artifact scatters may also contribute information on school activities conducted on the school grounds and in the school as well as later civic oriented activities.

(end)

United States Department of the Interior
National Park Service

National Register of Historic Places
Continuation Sheet

West Dennis Graded School
Dennis (Barnstable Co.), MA

Section number 9 Page 1

Major Bibliographic Resources

Dennis, Town of. *Annual Reports*. 1867, 1921, 1928, 1934, 1951, 1953, 1957, 1971.

Deyo, Simeon L. *History of Barnstable County, Mass.* H. W. Blake Co. N. Y. 1890.

Massachusetts Historical Commission. *Historic & Archaeological Resources of Cape Cod & the Islands*. 1987.

Massachusetts Historical Commission. *Town of Dennis Reconnaissance Survey Report*. 1985.

Massachusetts Historical Commission. *Inventory of the Historic Assets of the Commonwealth*. "MACRIS Report: Cape Cod Schools". 1999.

Reid, Nancy Thacher. *Dennis, Cape Cod From Firstcomers to Newcomers 1639-1993*. Dennis Historical Society. 1996.

Reid, Nancy Thacher and Phyllis Horton. "West Dennis Graded School Building Form". *Inventory of the Historic Assets of the Commonwealth*. 1997.

Yarmouth Register. April 17, 1867. legal ad for bids on schoolhouses in Dennis.

Map of Barnstable, Dukes, and Nantucket Counties. Henry F. Walling. 1858.

Atlas of Barnstable County. George H. Walker & Co. 1880

Atlas of Barnstable County. Walker Lithograph & Publishing Co. 1908

(end)

WestDennisGradedSchool
Name of Property

Barnstable, MA
County, State

10. Geographical Data

Acreege of Property less than one acre

UTM References See continuation sheet.

(Place additional UTM references on a continuation sheet.)

1. 19	402580	4612700
Zone	Easting	Northing
2.		
Zone	Easting	Northing

3.			
Zone	Easting	Northing	
4.			
Zone	Easting	Northing	

 See continuation sheet

Verbal Boundary Description

(Describe the boundaries of the property on a continuation sheet.)

Boundary Justification

(Explain why the boundaries were selected on a continuation sheet.)

11. Form Prepared By

name/title Candace Jenkins, consultant/Nancy T. Reid, Dennis HC/Betsy Friedberg, NR director, MHC

organization Massachusetts Historical Commission date July 2000

street & number 220 Morrissey Boulevard telephone 617-727-8470

city or town Boston state MA zip code 02125

Additional Documentation

Submit the following items with the completed form:

Continuation Sheets

Maps

A **USGS map** (7.5 or 15 minute series) indicating the property's location.

A **sketch map** for historic districts and properties having large acreage or numerous resources.

Photographs

Representative **black and white photographs** of the property.

Additional items (Check with the SHPO or FPO for any additional items)

Property Owner

(Complete this item at the request of the SHPO or FPO.)

name Town of Dennis

street & number 485 Main Street telephone 508-394-8300

city or town South Dennis state MA zip code 02660

Paperwork Reduction Act Statement: This information is being collected for applications to the National Register of Historic Places to nominate properties for listing or determine eligibility for listing, to list properties, and to amend existing listings. Response to this request is required to obtain a benefit in accordance with the National Historic Preservation Act, as amended (16 U.S.C. 470 et seq.).

Estimated Burden Statement: Public reporting burden for this form is estimated to average 18.1 hours per response including the time for reviewing instructions, gathering and maintaining data, and completing and reviewing the form. Direct comments regarding this burden estimate or any aspect of this form to the Chief, Administrative Services Division, National Park Service, P.O. Box 37127, Washington, DC 20013-7127; and the Office of Management and Budget, Paperwork Reductions Project (1024-0018), Washington, DC 20503.

**United States Department of the Interior
National Park Service**

**National Register of Historic Places
Continuation Sheet**

West Dennis Graded School
Dennis (Barnstable Co.), MA

Section number 10 Page 1

Geographical Data

Verbal Boundary Description

The West Dennis Graded School occupies lot #21 on map #47 of the Town of Dennis' Assessors map. The boundaries are shown on the attached map.

Boundary Justification

The current boundaries are the same that existed during the period of significance.

(end)

CERTIFICATE BOND
25% COTTON FIBER

UNITED STATES DEPARTMENT OF THE INTERIOR
NATIONAL PARK SERVICE

NATIONAL REGISTER OF HISTORIC PLACES
EVALUATION/RETURN SHEET

REQUESTED ACTION: NOMINATION

PROPERTY NAME: West Dennis Graded School

MULTIPLE NAME:

STATE & COUNTY: MASSACHUSETTS, Barnstable

DATE RECEIVED: 7/10/00 DATE OF PENDING LIST: 7/25/00
DATE OF 16TH DAY: 8/10/00 DATE OF 45TH DAY: 8/24/00
DATE OF WEEKLY LIST:

REFERENCE NUMBER: 00000957

REASONS FOR REVIEW:

APPEAL: N DATA PROBLEM: N LANDSCAPE: N LESS THAN 50 YEARS: N
OTHER: N PDIL: N PERIOD: N PROGRAM UNAPPROVED: N
REQUEST: N SAMPLE: N SLR DRAFT: Y NATIONAL: N

COMMENT WAIVER: N

___ ACCEPT ___ RETURN ___ REJECT _____ DATE

ABSTRACT/SUMMARY COMMENTS:

RECOM./CRITERIA accept A&C

REVIEWER Patrick Andrews DISCIPLINE Historian

TELEPHONE _____ DATE 8/24/00

DOCUMENTATION see attached comments Y/N see attached SLR Y/N



West Dennis Graded School

67 School St, Dennis

Barnstable County, MA

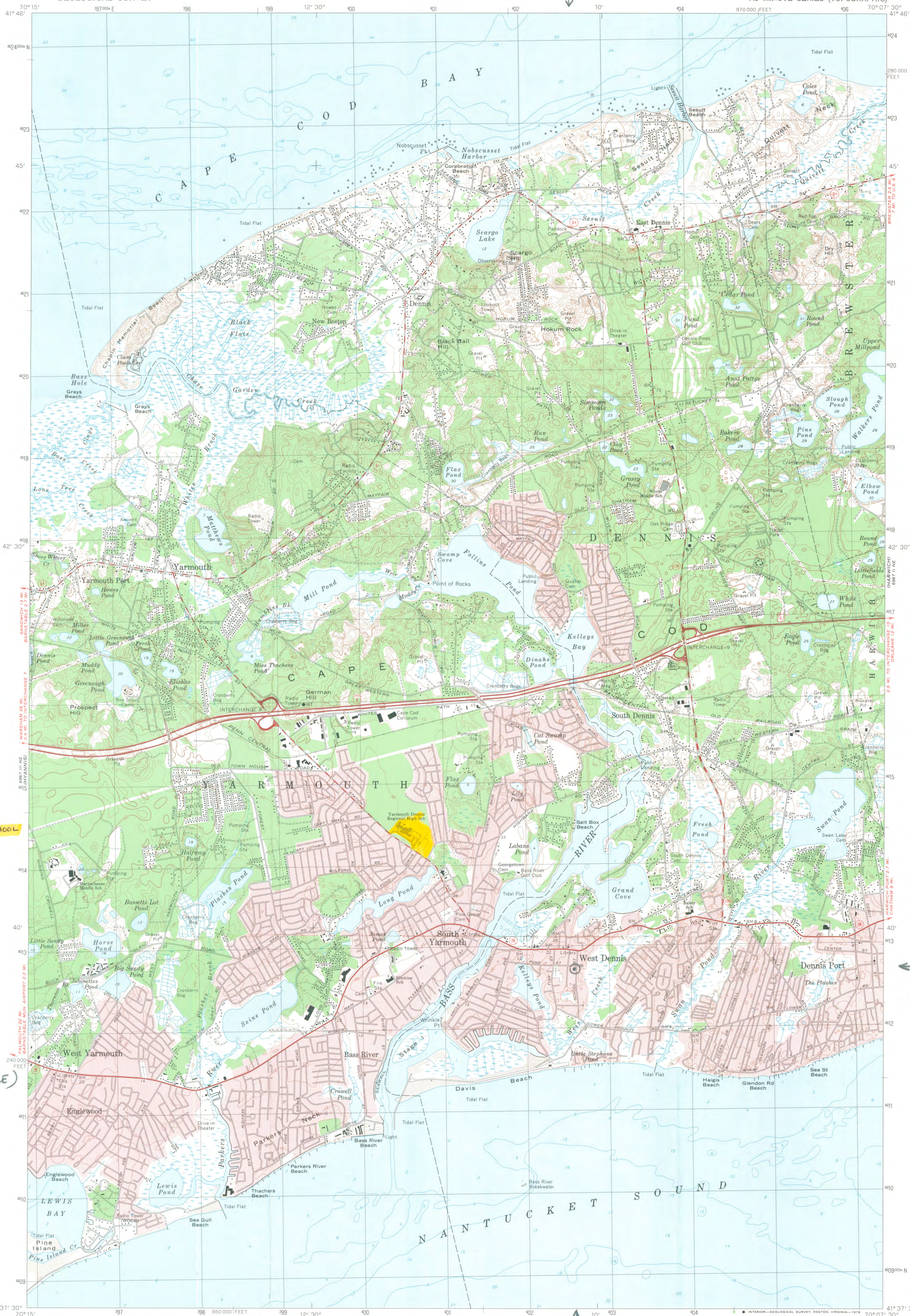
east facade + north elevation facing SW



West Dennis Graded School
67 School St, Dennis
Barnstable County, MA
West elevation facing SE



West Dennis Graded School
67 School St, Dennis
Barnstable County, MA
South elevation facing north



D-Y REGIONAL SCHOOL

WEST DENNIS
GRADED SCHOOL
DENNIS (BARNSTABLE)
MA
Zone 19
E - 402580
N - 4612700

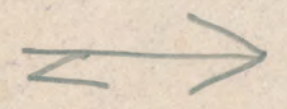
Mapped, edited, and published by the Geological Survey
Control by USGS, NOS/NOAA and Massachusetts Geodetic Survey
Planimetry by photogrammetric methods from aerial photographs
taken 1939. Topography by planimetric surveys 1940.
Revised from aerial photographs taken 1973. Field checked 1974
Selected hydrographic data compiled from NOS 257
and 258 (1972), 581 (1971), and 339 (1973)
This information is not intended for navigational purposes
Polyconic projection. 1927 North American datum
10,000-foot grid based on Massachusetts coordinate system,
mainland zone
1000-metre Universal Transverse Mercator grid,
zone 19
Red tint indicates areas in which only landmark buildings are shown

SCALE 1:25 000
1 0000 2000 4000 6000 8000 10000 FEET
1 5 10 15 20 KILOMETRE
CONTOUR INTERVAL 10 FEET
NATIONAL GEODETIC VERTICAL DATUM OF 1929
DEPTH CURVES AND SOUNDINGS IN FEET—DATUM IS MEAN LOW WATER
SHORELINE SHOWN REPRESENTS THE APPROXIMATE LINE OF MEAN HIGH WATER
THE MEAN RANGE OF TIDE IS APPROXIMATELY 9.5 FEET
IN CAPE COD BAY AND 2.8 FEET IN NANTUCKET SOUND

ROAD CLASSIFICATION
Primary highway, hard surface
Secondary highway, hard surface
Unimproved road
Light-duty road, hard or improved surface
Interstate Route
U.S. Route
State Route

DENNIS, MASS.
N4137.5—W7007.5/8.5 X 7.5
1974
AMS 6967 II NW—SERIES V814

Town of Dennis Assessor's Map 47, parcel 21
 West Dennis Graded School
 67 School St.



Eastman Trust
 Eastman Trust
 Eastman Trust



BF

RECEIVED

DEC 08 1997

Town of Dennis

P.O. BOX 1419, SOUTH DENNIS, MA 02660-1419/ Telephone: 508-394-8300 • Fax: 508-394-8309

MASS. HIST. COMM

December 2, 1997

Commonwealth of Massachusetts
Massachusetts Historical Commission
220 Morrissey Boulevard
Boston, MA 02125

ATT: Betsey Friedberg

Dear Ms. Friedberg:

Please be advised that the Board of Selectmen of the Town of Dennis wholeheartedly endorses the Dennis Historic Commission's efforts to have the West Dennis Community Building placed on the National Registry of Historic Places.

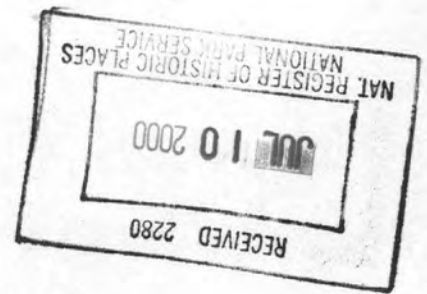
Our community is indeed fortunate to have such a structure within its boundaries; the outpouring of community support for its renovation and preservation demonstrates the Town's recognition of the importance of maintaining such historical landmarks.

Sincerely,

Cleon H. Turner, Chairman
Board of Selectmen
Town of Dennis

CHT/smk





The Commonwealth of Massachusetts
William Francis Galvin, Secretary of the Commonwealth
Massachusetts Historical Commission

July 5, 2000

Ms. Carol Shull
National Register of Historic Places
Department of the Interior
National Park Service
Mail Stop 2280, Suite 400
1849 C Street, NW
Washington, DC 20240

Dear Ms. Shull:

Enclosed please find the following nomination form:

West Dennis Graded School, 67 School Street, Dennis (Barnstable), MA

The nomination has been voted eligible by the State Review Board and has been signed by the State Historic Preservation Officer. The owners of the property were notified of pending State Review Board consideration 30 to 45 days before the meeting and were afforded the opportunity to comment. One letter of support has been received.

Sincerely,

Betsy Friedberg
National Register Director
Massachusetts Historical Commission

enclosure

cc: Nancy Thatcher Reid, Chair, Dennis Historical Commission
Candace Jenkins, Preservation Consultant
Heidi Schadt, Chair, Dennis Board of Selectmen
Charles Greenhalgh, Dennis Town Planner
Sarah Korjeff, Cape Cod Commission