



George Bethers House, PHILOMATH
Benton County, Oregon

Photographer - Scott Stephenson

April 26, 1996

Portland, OR
97219

looking north

LEWIS AND CLARK
COLLEGE, 0615
SW PALATKA HILL
ROAD, BOX 550

#1 OF 9

SOUTH (FRONT) PLANTATION -
RESTORATION IN PROGRESS



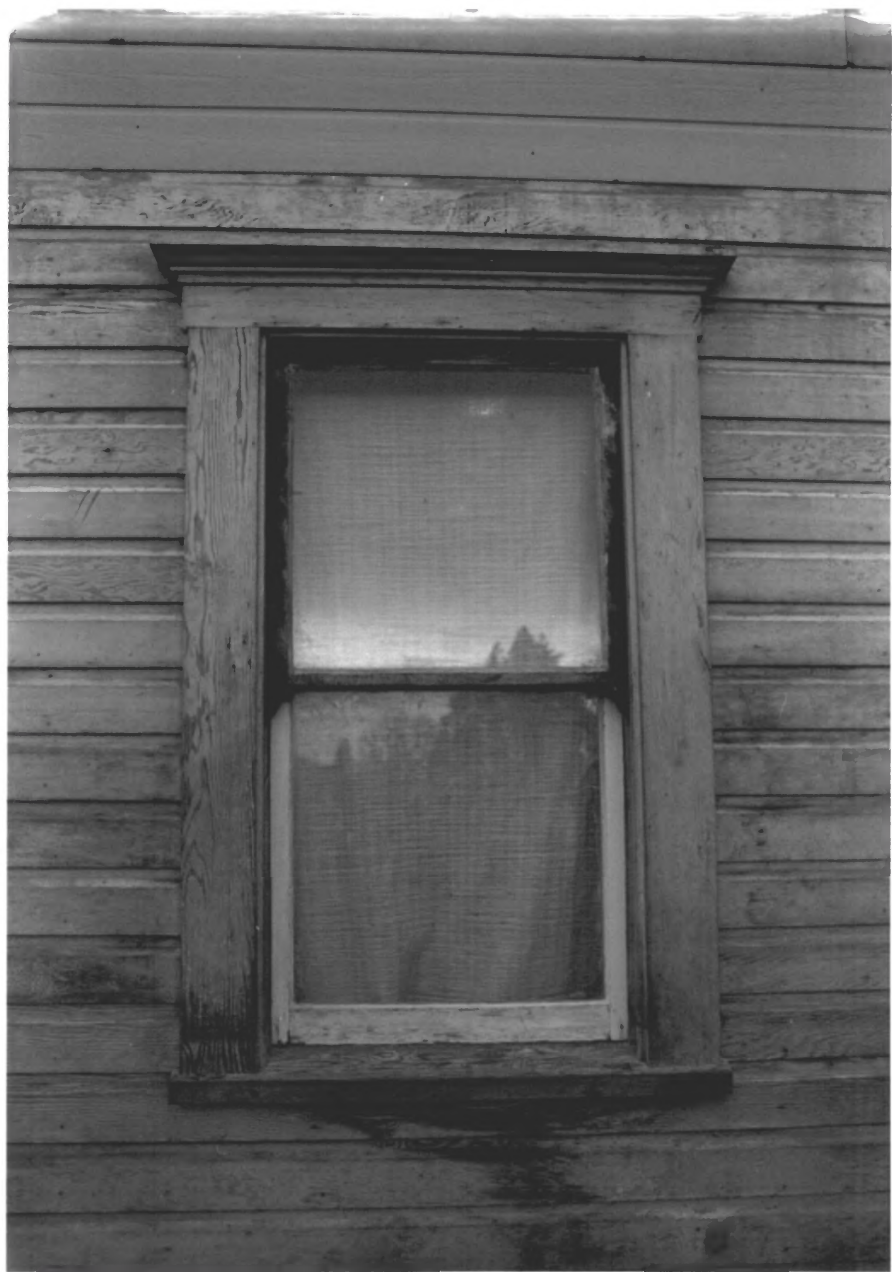
George Bethers House, PHILOMATH
Benton County, Oregon

Photographer - Scott Stephenson

April 26, 1996
LAWIS AND CLARK
COLLAGE, 0615
SW PALATINA HILL
PORTLAND, OR 97219 ROAD, BOX 550
(looking east (printed backwards))

2079

WAST AND FILM VATION
(TRAVELERS)



George Bethers House, PHILMATH
Benton County, OREGON

Photographer - Scott Stephenson

April 26, 1996

LEWIS AND CLARK
COLLEGE, 0615

Portland, OR

97219 SUPALATINE HILL
ROAD, BOX 550

looking west at east window

3 OF 9



George Bethers House, PHILOMATH
Benton County, OREGON

Photographer - Scott Stephenson
LAWIS AND CLARK

April 26, 1996 COLLAGA, 0615
SW PALATINA HILL
ROAD, BOX 550

Portland, OR 97219

looking west at interior entry

#4 of 9.



George Bethers House, PHILOMATH
Benton County, Oregon

Photographer - Scott Stephenson

April 26, 1996

Portland, OR 97219

LAWIS AND CLARK
COLLAGE, 0615
SW PALATINE HILL
ROAD, BOX 550

Looking north east upstairs

5 of 9



George Bethers House, PHILOMATH
Benton County, Oregon

Photographer - Scott Stephenson

April 26, 1996
LAWIS AND CLARK COLLEGE
0615 SW PALATINE
HILL ROAD
BOX 550
Portland, OR 97219

looking south

double doors from front room
into kitchen

6 of 9



George Bethers House PHILOMATH

Benton County, Oregon

Photographer - Scott Stephenson

April 26, 1996

LAUIS AND CLARK COLLAGE
0615 SW PALATINE HILL ROAD
BOX 550

Portland, OR 97219

looking west - ^{ATTIC} interior rough - sawn rafters

#7 of 9



GEORGE BETHERS HOUSE

AND EAST
VIEW OF SOUTH, SIDES

PHILOMATH,
BENTON COUNTY, OREGON

ANONYMOUS, ABOUT 1900

BENTON COUNTY HISTORICAL SOCIETY

#8 OF 9

PHILOMATH, OREGON 97370



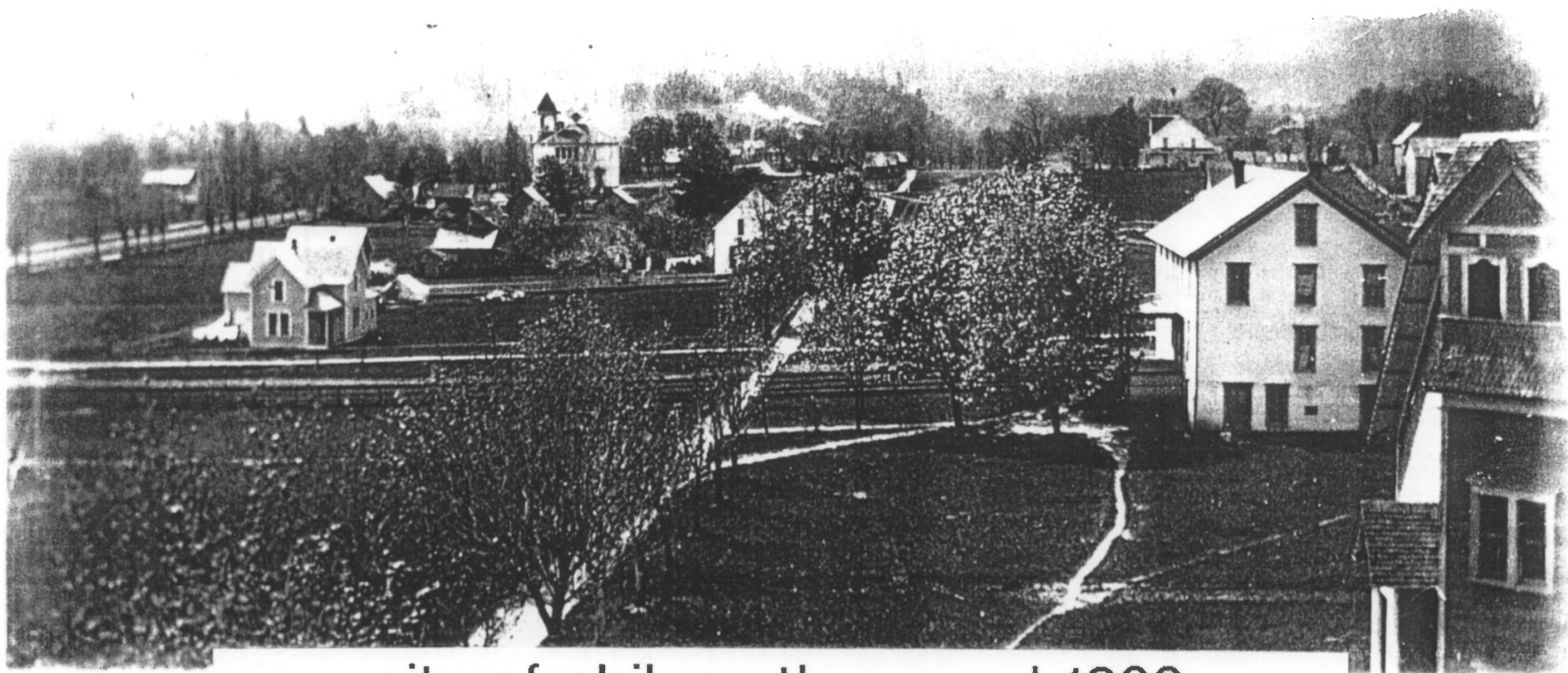
GEORGE BETHERS HOUSE
VIEW OF EAST SIDE ^{LOOKING WEST} FROM PHILMATH COLLEGE

PHILMATH
BENTON COUNTY, OREGON

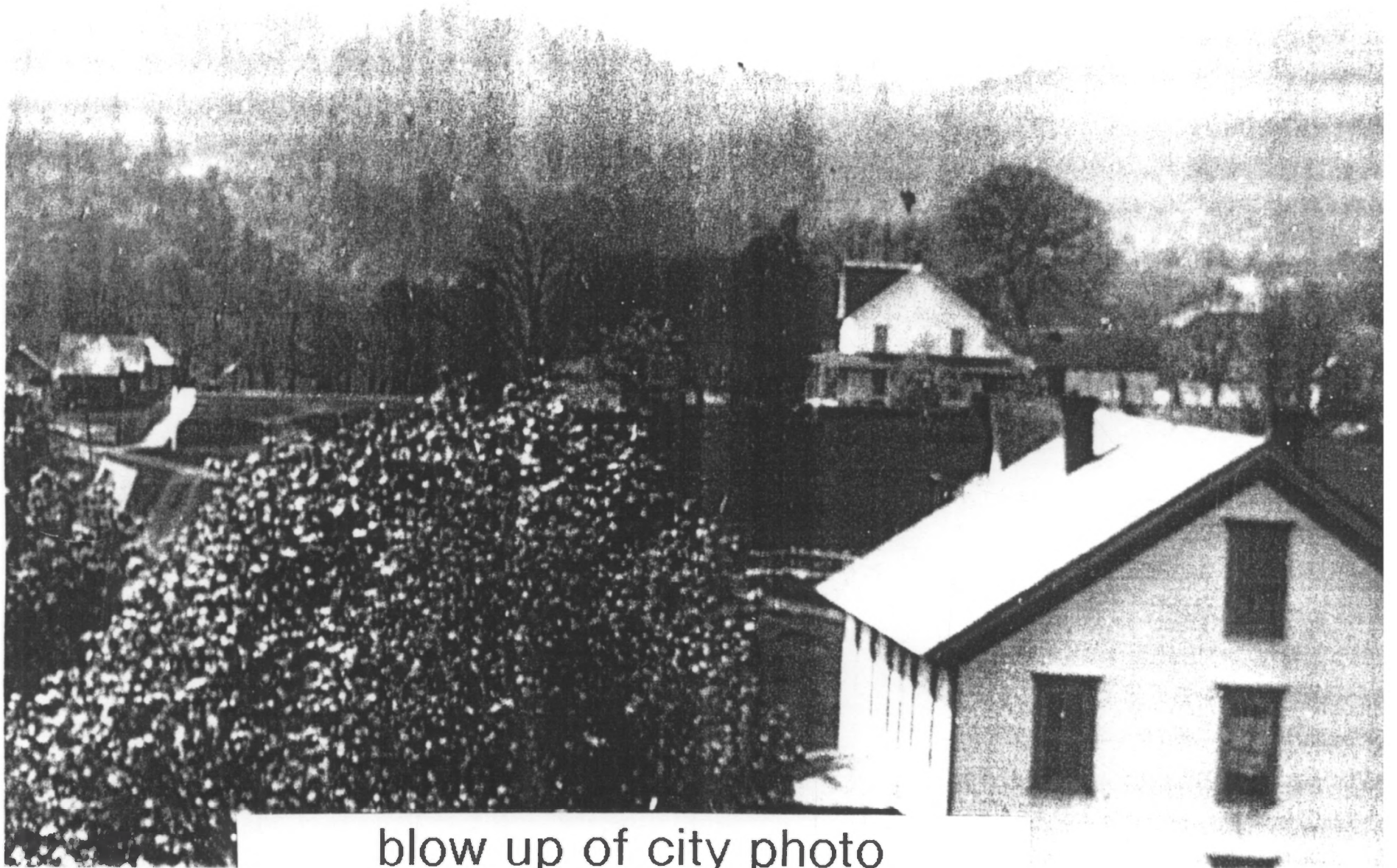
ANONYMOUS, ca. 1900
BENTON COUNTY HISTORICAL SOCIETY
#9 OF 9 PHILMATH, OREGON 97370



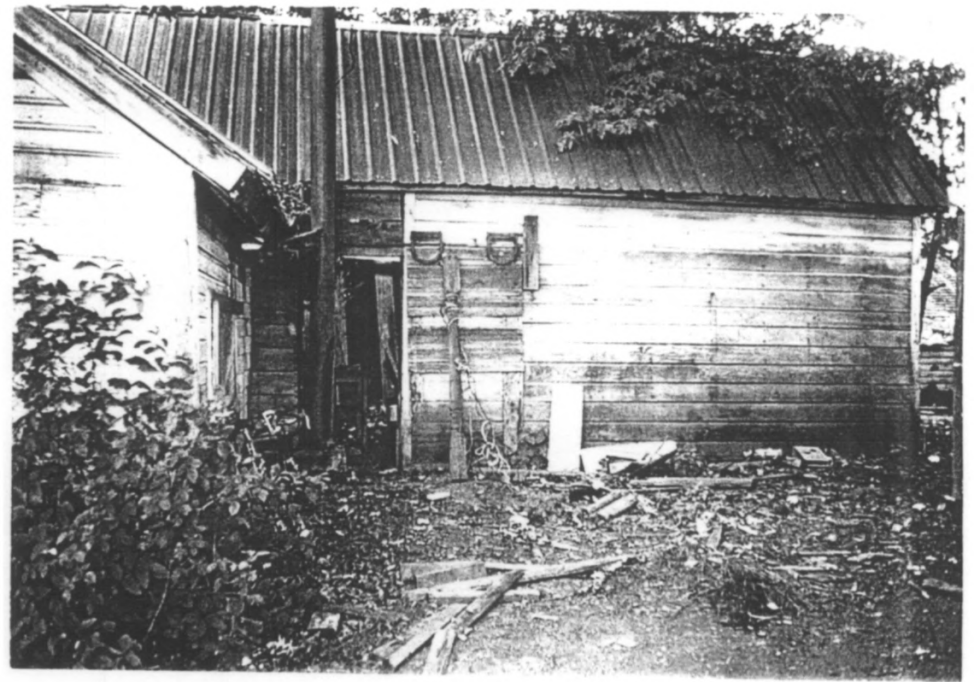
house around 1900



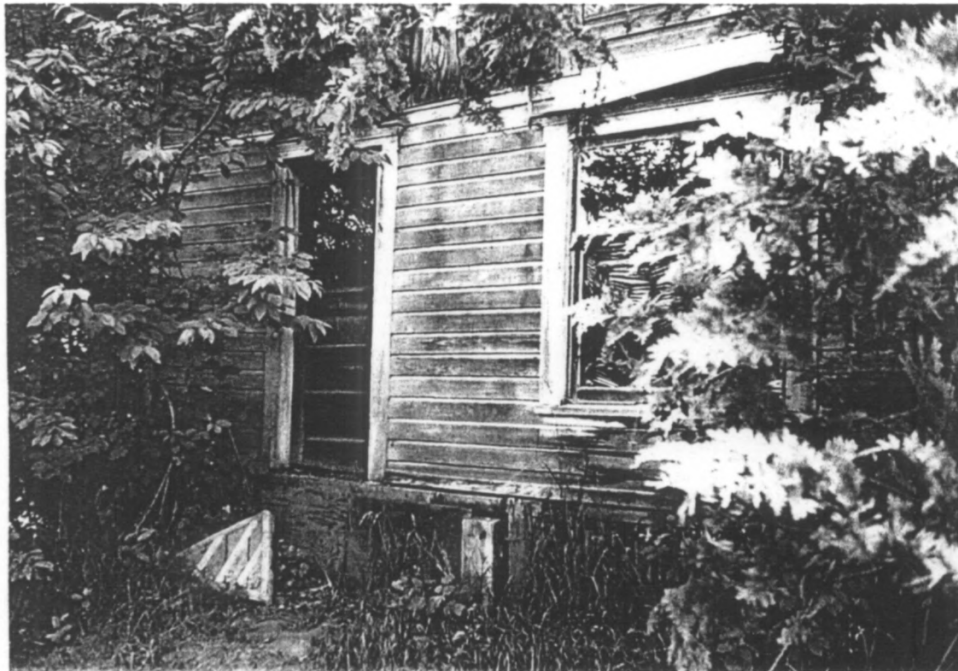
city of philomath around 1900

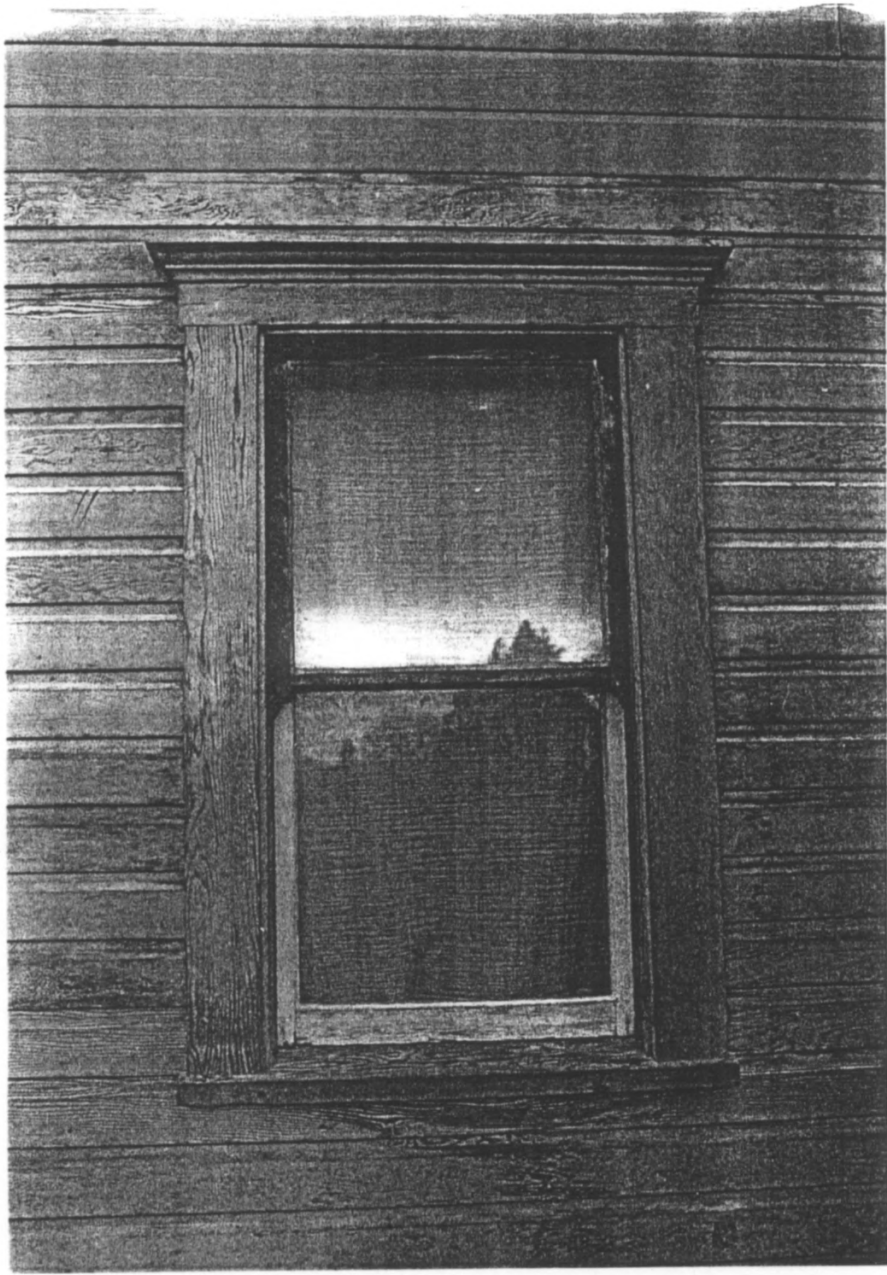


blow up of city photo



two years ago (1995)

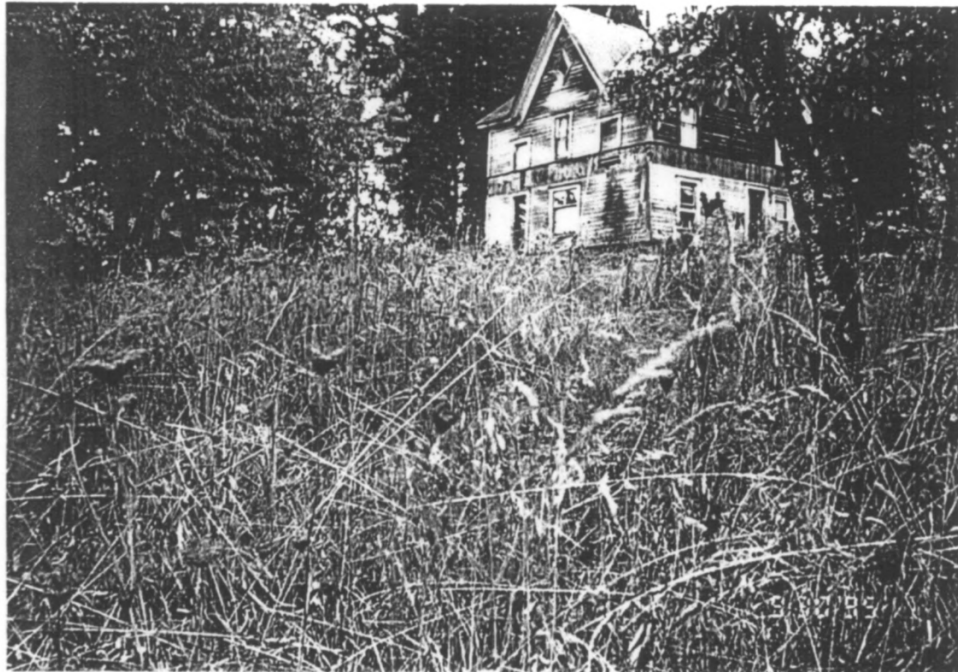


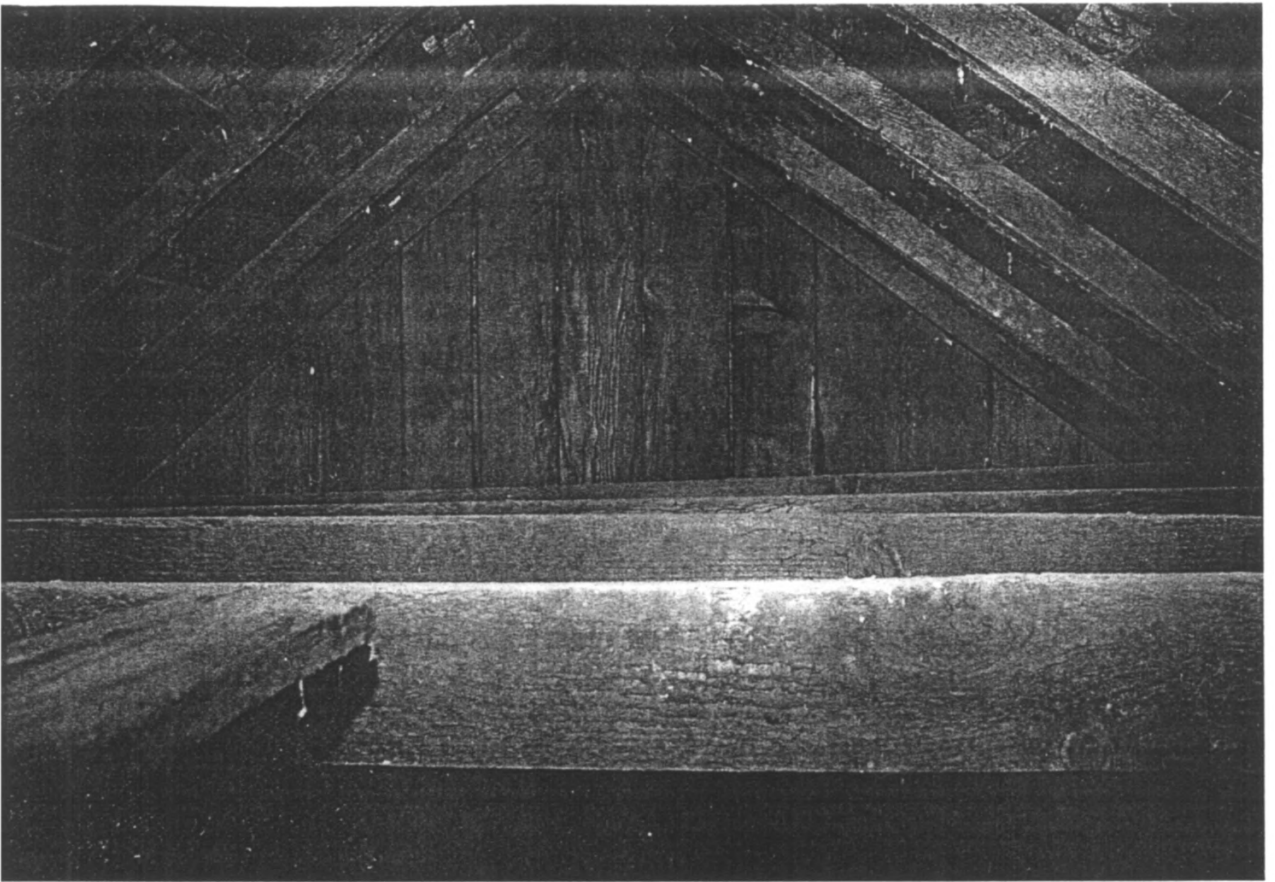


house front and window

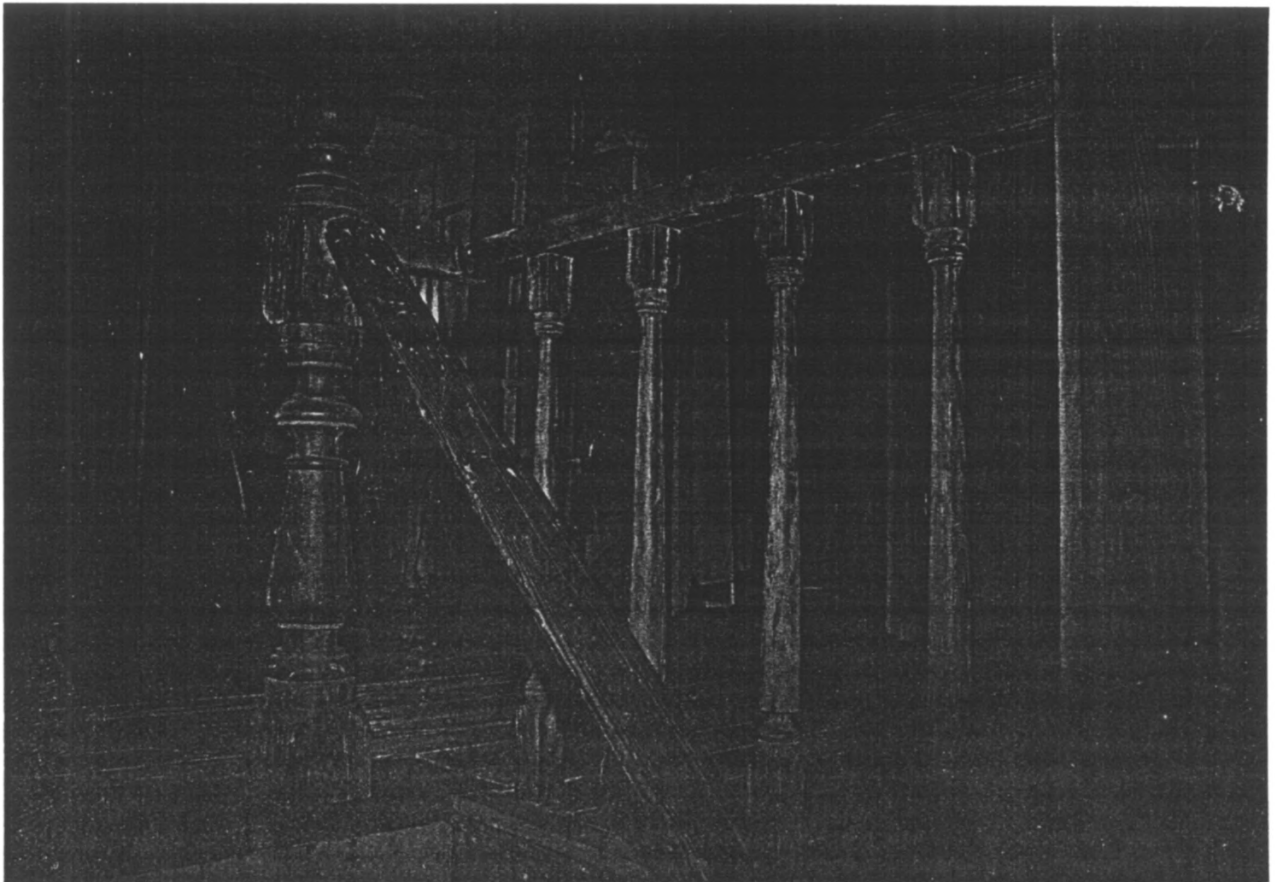


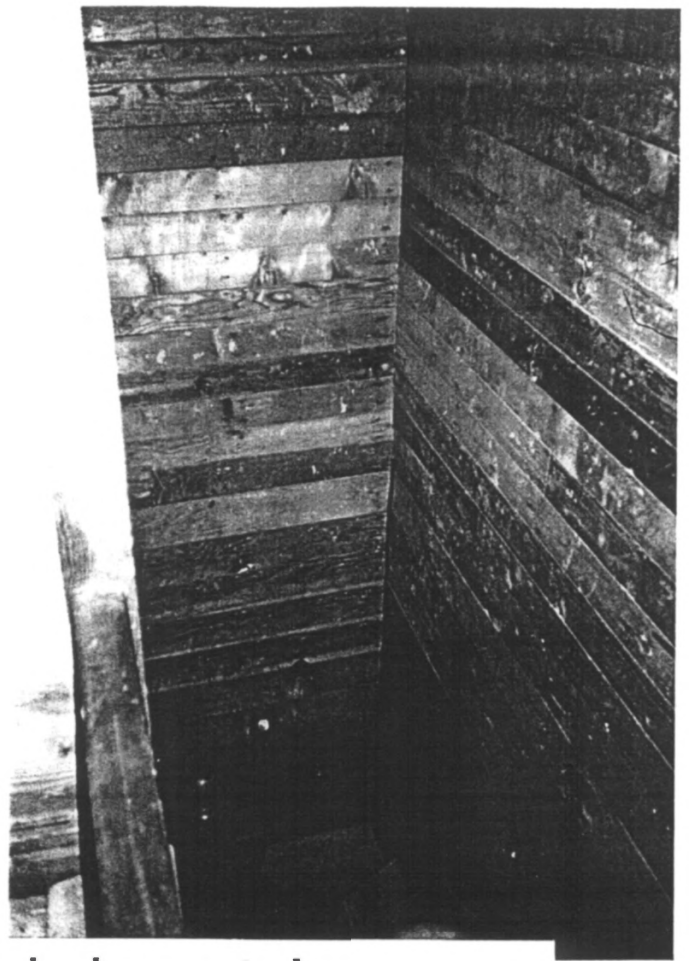
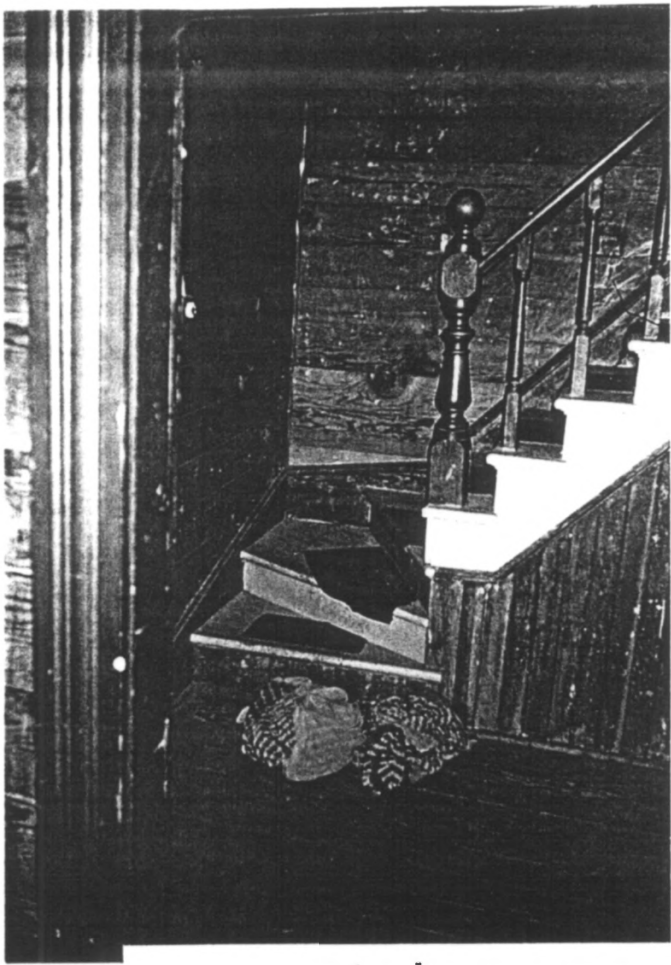
exterior and under house



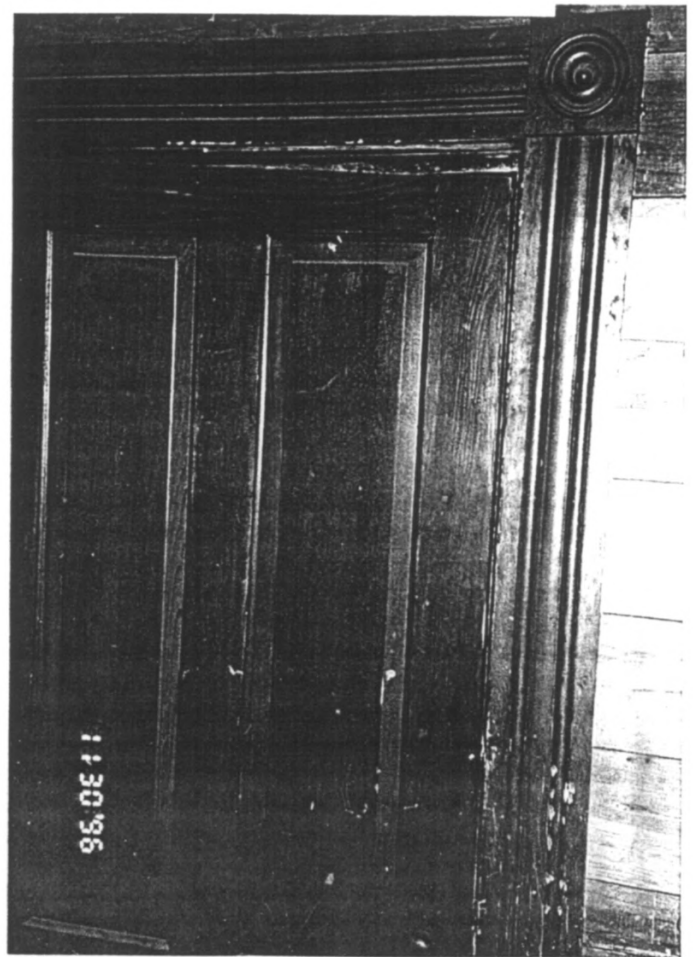
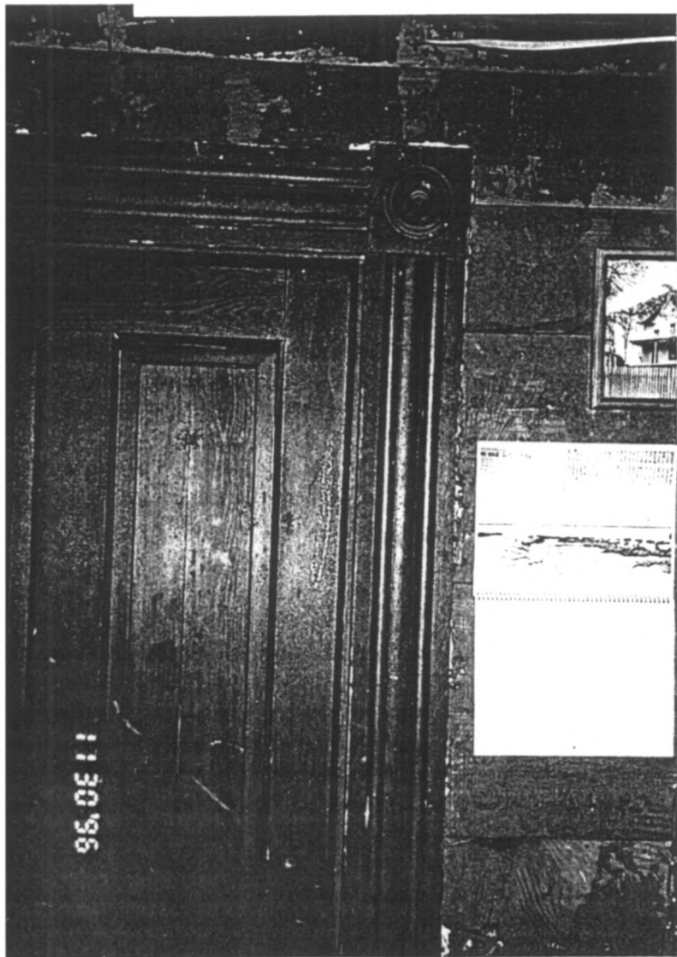


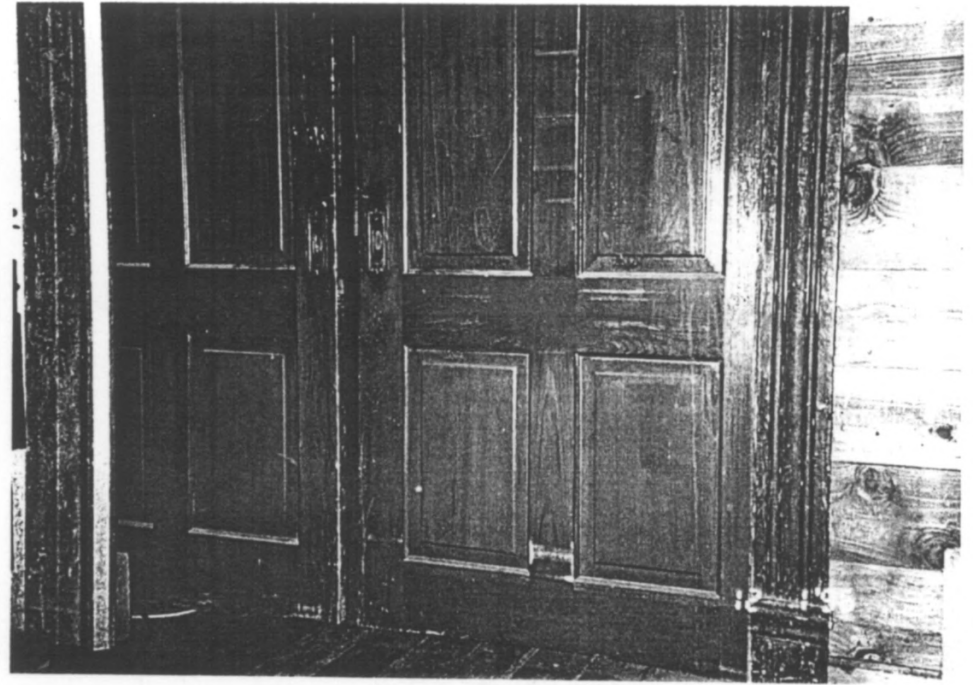
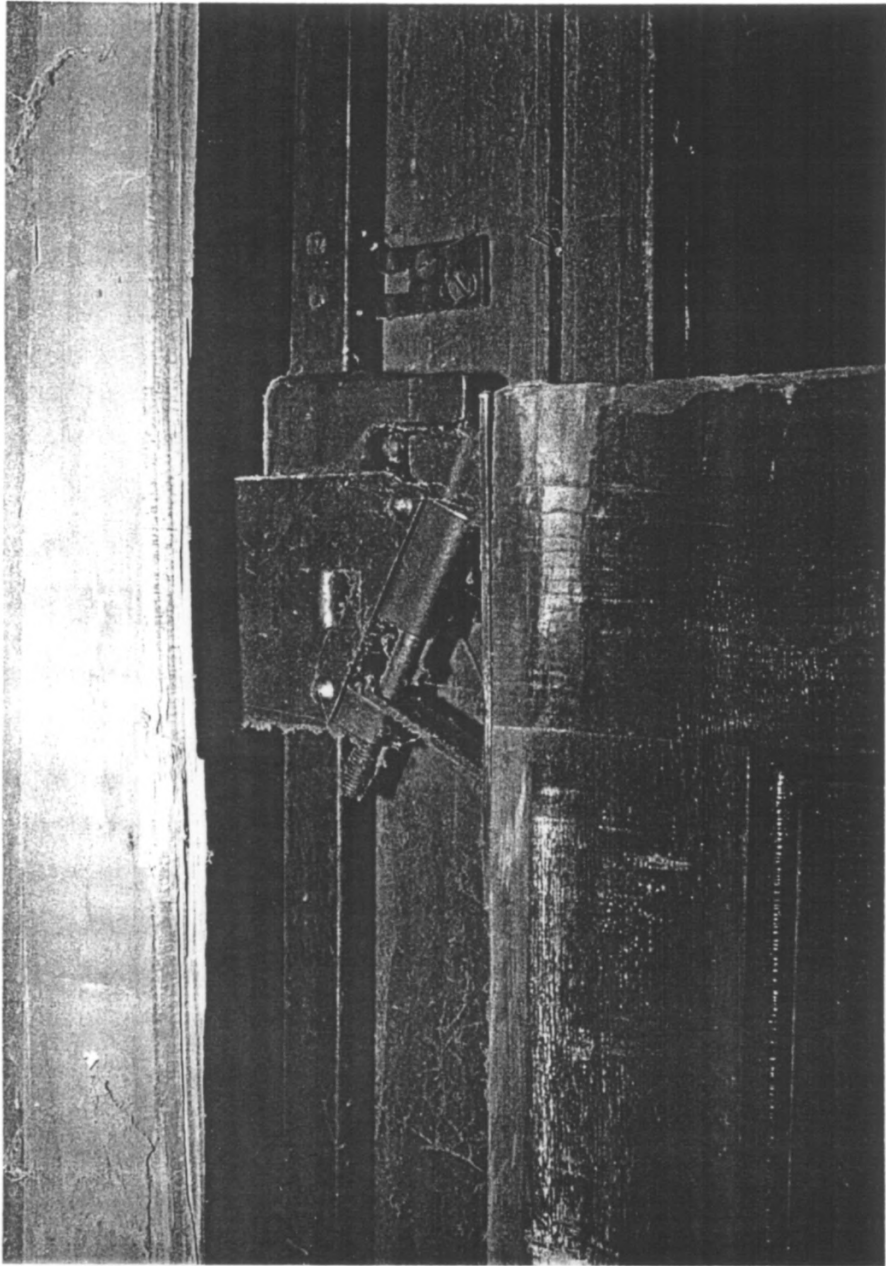
stair banister and attic





stair case and door trim





pocket doors and hardware

