



UNITED STATES POST OFFICE

AMERICAN
PIONEER

Photograph No. 1

UNITED STATES POST OFFICE
Beach Street Station
220 North Beach Street
Daytona Beach, FL

Photo by B. Bailey 3/88

Looking northwest at front of P. O.



PLEASE
ENTER
HERE

PLEASE
ENTER
HERE

Photograph No. 2

UNITED STATES POST OFFICE
Beach Street Station
220 North Beach Street
Daytona Beach, FL

Photo by B. Bailey 3/88
Customer Service Lobby



Photograph No. 3

UNITED STATES POST OFFICE
Beach Street Station
220 North Beach Street
Daytona Beach, FL

Photo by B. Bailey 3/88
Post Office Box Lobby

OFFICE



Photograph No. 4

UNITED STATES POST OFFICE
Beach Street Station
220 North Beach Street
Daytona Beach, FL

Photo by B. Bailey 3/88

Corinthian columns topped with
capital decorative ironwork at
the head of the windows



Photograph No. 5

UNITED STATES POST OFFICE

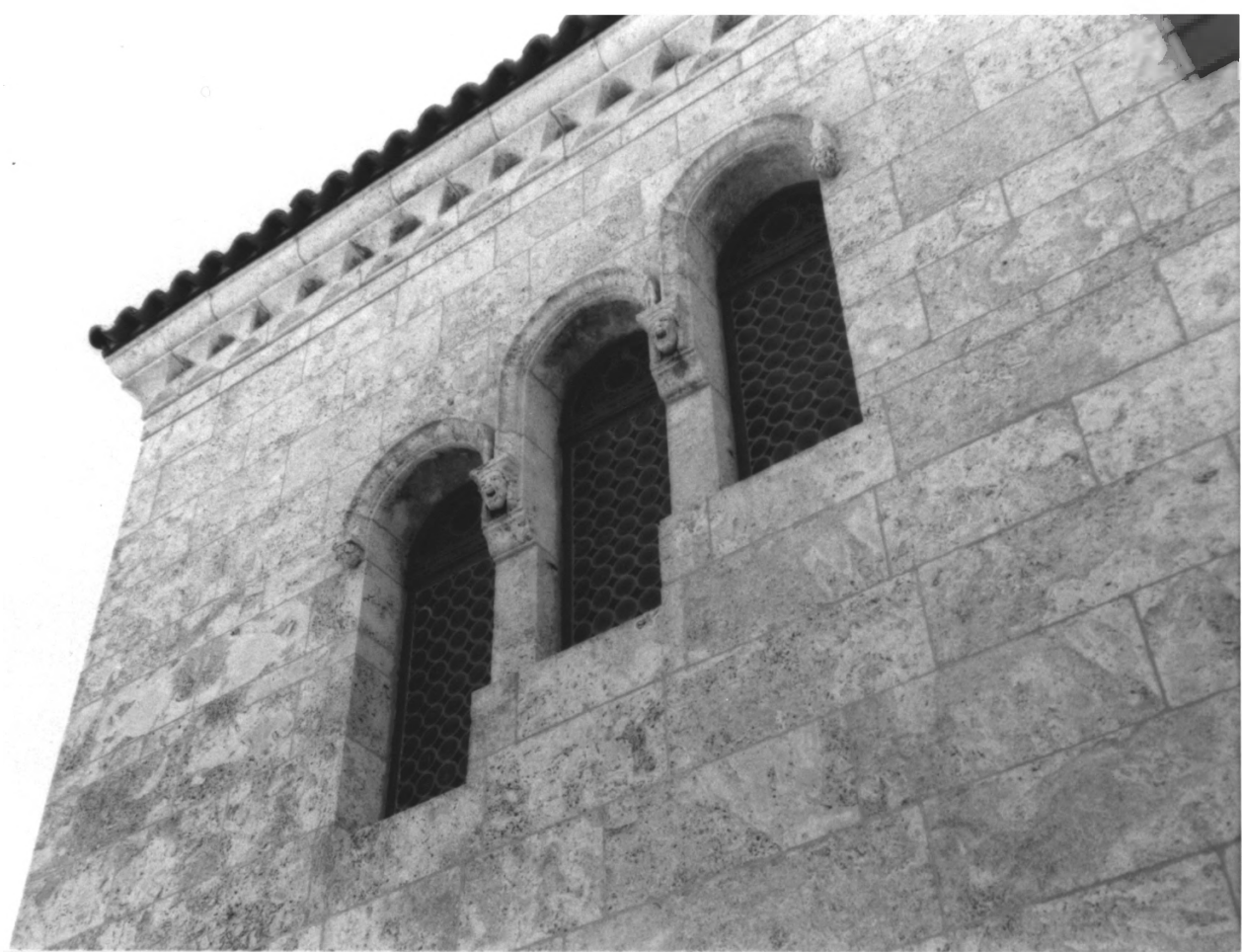
Beach Street Station

220 North Beach Street

Daytona Beach, FL

Photo by B. Bailey 3/88

Two positive bas relief eagles over
arched entryways with eagle motif
carried to iron grillwork



Photograph No. 6

UNITED STATES POST OFFICE

Beach Street Station

220 North Beach Street

Daytona Beach, FL

Photo by B. Bailey 3/88

Side elevation showing classical detailing at the transition from the wall to the barrel tile roof



Photograph No. 7

UNITED STATES POST OFFICE

Beach Street Station

220 North Beach Street

Daytona Beach, FL

Photo by B. Bailey 3/88

Decorative wrought iron globe
fixtures at entryways



Photograph No. 8

UNITED STATES POST OFFICE

Beach Street Station

220 North Beach Street

Daytona Beach, FL

Photo by B. Bailey 3/88

Moorish style Florida Key Stone panels
frame side windows with decorative
metal sculpture at center of arch



Photograph No. 9

UNITED STATES POST OFFICE
Beach Street Station
220 North Beach Street
Daytona Beach, FL

Photo by B. Bailey 3/88

Applique typical of Corinthian style
to compliment columns



Photograph No. 10

UNITED STATES POST OFFICE

Beach Street Station

220 North Beach Street

Daytona Beach, FL

Photo by B. Bailey 3/88

Decorative grillwork at interior
stairway

WILLIAM H. WOODIN
SECRETARY OF THE TREASURY
JAMES A. FARLEY
POSTMASTER GENERAL

LAWRENCE W. ROBERT JR.
ASSISTANT SECRETARY OF THE TREASURY
JAMES A. WETMORE
ACTING SUPERVISING ARCHITECT

HARRY M. GRIFFIN
ARCHITECT

1933

Photograph No. 11

UNITED STATES POST OFFICE
Beach Street Station
220 North Beach Street
Daytona Beach, FL

Photo by B. Bailey 3/88
Dedication cornerstone