



UNITED STATES DEPARTMENT OF THE INTERIOR  
NATIONAL PARK SERVICE

**NATIONAL REGISTER OF HISTORIC PLACES  
PROPERTY PHOTOGRAPH FORM**

FOR NPS USE ONLY

RECEIVED

APR 2 1976

DATE ENTERED NOV 13 1976

SEE INSTRUCTIONS IN *HOW TO COMPLETE NATIONAL REGISTER FORMS*  
TYPE ALL ENTRIES -- ENCLOSE WITH PHOTOGRAPH

**1 NAME**

HISTORIC

Jefferson Historic District

AND/OR COMMON

Jefferson Historic District

**2 LOCATION**

CITY, TOWN

Jefferson

\_\_\_ VICINITY OF

COUNTY

Marengo

STATE

Alabama

**3 PHOTO REFERENCE**

PHOTO CREDIT Ellen Mertins

DATE OF PHOTO 1975

NEGATIVE FILED AT Alabama Historical Commission

**4 IDENTIFICATION**

DESCRIBE VIEW, DIRECTION, ETC. IF DISTRICT, GIVE BUILDING NAME & STREET

PHOTO NO.

Community House (12).

1



UNITED STATES DEPARTMENT OF THE INTERIOR  
NATIONAL PARK SERVICE

**NATIONAL REGISTER OF HISTORIC PLACES  
PROPERTY PHOTOGRAPH FORM**

FOR NPS USE ONLY

RECEIVED APR 2 1976

DATE ENTERED NOV 13 1976

SEE INSTRUCTIONS IN *HOW TO COMPLETE NATIONAL REGISTER FORMS*  
TYPE ALL ENTRIES -- ENCLOSE WITH PHOTOGRAPH

**1 NAME**

HISTORIC

Jefferson Historic District

AND/OR COMMON

Jefferson Historic District

**2 LOCATION**

CITY, TOWN

Jefferson

\_\_\_ VICINITY OF

COUNTY

Marento

STATE

Alabama

**3 PHOTO REFERENCE**

PHOTO CREDIT Ellen Mertins

DATE OF PHOTO

1975

NEGATIVE FILED AT Alabama Historical Commission

**4 IDENTIFICATION**

DESCRIBE VIEW, DIRECTION, ETC. IF DISTRICT. GIVE BUILDING NAME & STREET

PHOTO NO. 2

Facing east along Highway 28, showing Jefferson Baptist Church (15) and  
Lock Store and Post Office (13).



UNITED STATES DEPARTMENT OF THE INTERIOR  
NATIONAL PARK SERVICE

**NATIONAL REGISTER OF HISTORIC PLACES  
PROPERTY PHOTOGRAPH FORM**

FOR NPS USE ONLY	
RECEIVED	APR 2 1976
DATE ENTERED	NOV 13 1976

SEE INSTRUCTIONS IN *HOW TO COMPLETE NATIONAL REGISTER FORMS*  
TYPE ALL ENTRIES --| ENCLOSE WITH PHOTOGRAPH

**1 NAME**

HISTORIC  
Jefferson Historic District

AND/OR COMMON  
Jefferson Historic District

**2 LOCATION**

CITY, TOWN  
Jefferson

\_\_\_VICINITY OF

COUNTY  
Marengo

STATE  
Alabama

**3 PHOTO REFERENCE**

PHOTO CREDIT Ellen Mertins

DATE OF PHOTO 1975

NEGATIVE FILED AT Alabama Historical Commission

**4 IDENTIFICATION**

DESCRIBE VIEW, DIRECTION, ETC. IF DISTRICT, GIVE BUILDING NAME & STREET

PHOTO NO. 3

Seabrook-Simmons Store (16).



UNITED STATES DEPARTMENT OF THE INTERIOR  
NATIONAL PARK SERVICE

**NATIONAL REGISTER OF HISTORIC PLACES  
PROPERTY PHOTOGRAPH FORM**

FOR NPS USE ONLY

RECEIVED APR 2 1976

DATE ENTERED NOV 13 1976

SEE INSTRUCTIONS IN *HOW TO COMPLETE NATIONAL REGISTER FORMS*  
TYPE ALL ENTRIES -- ENCLOSE WITH PHOTOGRAPH

**1 NAME**

HISTORIC

Jefferson Historic District

AND/OR COMMON

Jefferson Historic District

**2 LOCATION**

CITY, TOWN

Jefferson

\_\_\_VICINITY OF

COUNTY

Marengo

STATE

Alabama

**3 PHOTO REFERENCE**

PHOTO CREDIT Ellen Mertins

DATE OF PHOTO 1975

NEGATIVE FILED AT Alabama Historical Commission

**4 IDENTIFICATION**

DESCRIBE VIEW, DIRECTION, ETC. IF DISTRICT, GIVE BUILDING NAME & STREET

PHOTO NO.

Facing east along Highway 28, showing James Lindsey House (9) and  
Billy Rhodes House.

4





UNITED STATES DEPARTMENT OF THE INTERIOR  
NATIONAL PARK SERVICE

**NATIONAL REGISTER OF HISTORIC PLACES  
PROPERTY PHOTOGRAPH FORM**

FOR NPS USE ONLY

RECEIVED

APR 2 1976

DATE ENTERED

NOV 13 1976

SEE INSTRUCTIONS IN *HOW TO COMPLETE NATIONAL REGISTER FORMS*  
TYPE ALL ENTRIES -- ENCLOSE WITH PHOTOGRAPH

**1 NAME**

HISTORIC

Jefferson Historic District

AND/OR COMMON

Jefferson Historic District

**2 LOCATION**

CITY, TOWN

Jefferson

\_\_\_VICINITY OF

COUNTY

Marengo

STATE

Alabama

**3 PHOTO REFERENCE**

PHOTO CREDIT

Ellen Mertins

DATE OF PHOTO

1975

NEGATIVE FILED AT

Alabama Historical Commission

**4 IDENTIFICATION**

DESCRIBE VIEW, DIRECTION, ETC. IF DISTRICT. GIVE BUILDING NAME & STREET

Simmons Tenant House (2).

PHOTO NO.

5



UNITED STATES DEPARTMENT OF THE INTERIOR  
NATIONAL PARK SERVICE

**NATIONAL REGISTER OF HISTORIC PLACES  
PROPERTY PHOTOGRAPH FORM**

FOR NPS USE ONLY	
RECEIVED	APR 2 1976
DATE ENTERED	NOV 13 1976

SEE INSTRUCTIONS IN *HOW TO COMPLETE NATIONAL REGISTER FORMS*  
TYPE ALL ENTRIES -- ENCLOSE WITH PHOTOGRAPH

**1 NAME**

HISTORIC

Jefferson Historic District

AND/OR COMMON

Jefferson Historic District

**2 LOCATION**

CITY, TOWN

Jefferson

\_\_\_VICINITY OF

COUNTY

Marengo

STATE

Alabama

**3 PHOTO REFERENCE**

PHOTO CREDIT

Ellen Mertins

DATE OF PHOTO

1975

NEGATIVE FILED AT

Alabama Historical Commission

**4 IDENTIFICATION**

DESCRIBE VIEW, DIRECTION, ETC. IF DISTRICT, GIVE BUILDING NAME & STREET

PHOTO NO. 6

Hildreth-Simmons House (7).



UNITED STATES DEPARTMENT OF THE INTERIOR  
NATIONAL PARK SERVICE

**NATIONAL REGISTER OF HISTORIC PLACES  
PROPERTY PHOTOGRAPH FORM**

FOR NPS USE ONLY

RECEIVED

APR 2 1976

DATE ENTERED

NOV 13 1976

SEE INSTRUCTIONS IN *HOW TO COMPLETE NATIONAL REGISTER FORMS*  
TYPE ALL ENTRIES -- ENCLOSE WITH PHOTOGRAPH

**1 NAME**

HISTORIC

Jefferson Historic District

AND/OR COMMON

Jefferson Historic District

**2 LOCATION**

CITY, TOWN

Jefferson

\_\_\_ VICINITY OF

COUNTY

Marengo

STATE

Alabama

**3 PHOTO REFERENCE**

PHOTO CREDIT

Ellen Mertins

DATE OF PHOTO

1975

NEGATIVE FILED AT

Alabama Historical Commission

**4 IDENTIFICATION**

DESCRIBE VIEW, DIRECTION, ETC. IF DISTRICT. GIVE BUILDING NAME & STREET

PHOTO NO. 7

Westbrook House (1).



UNITED STATES DEPARTMENT OF THE INTERIOR  
NATIONAL PARK SERVICE

**NATIONAL REGISTER OF HISTORIC PLACES  
PROPERTY PHOTOGRAPH FORM**

FOR NPS USE ONLY

RECEIVED APR 2 1976

DATE ENTERED NOV 13 1976

SEE INSTRUCTIONS IN *HOW TO COMPLETE NATIONAL REGISTER FORMS*  
TYPE ALL ENTRIES --ENCLOSE WITH PHOTOGRAPH

**1 NAME**

HISTORIC

Jefferson Historic District

AND/OR COMMON

Jefferson Historic District

**2 LOCATION**

CITY, TOWN

Jefferson

\_\_\_VICINITY OF

COUNTY

Marengo

STATE

Alabama

**3 PHOTO REFERENCE**

PHOTO CREDIT

Ellen Mertins

DATE OF PHOTO

1975

NEGATIVE FILED AT Alabama Historical Commission

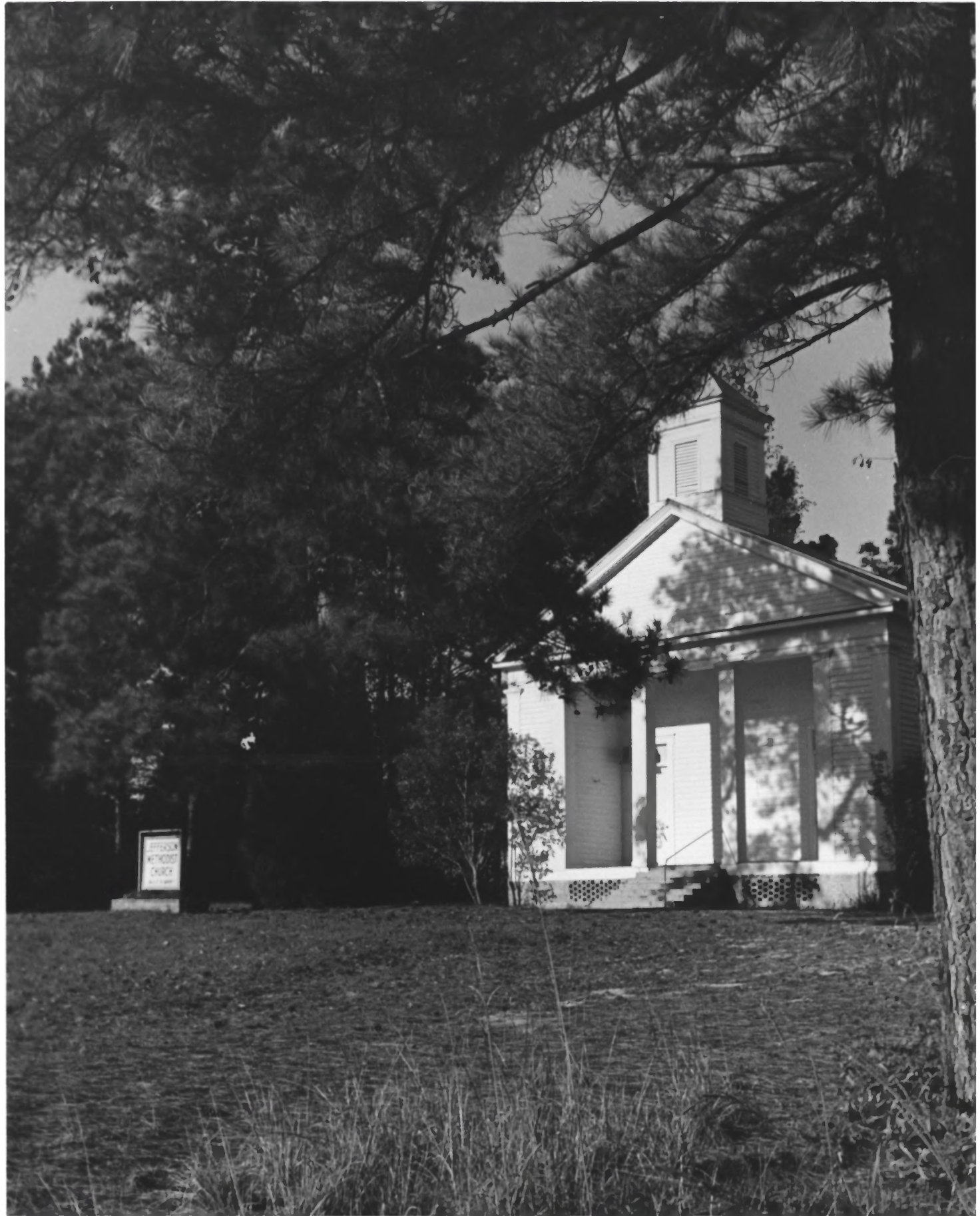
**4 IDENTIFICATION**

DESCRIBE VIEW, DIRECTION, ETC. IF DISTRICT, GIVE BUILDING NAME & STREET

PHOTO NO. 8

Facing east toward Joel Lipscomb House (3).





JEFFERSON  
METHODIST  
CHURCH

UNITED STATES DEPARTMENT OF THE INTERIOR  
NATIONAL PARK SERVICE

**NATIONAL REGISTER OF HISTORIC PLACES  
PROPERTY PHOTOGRAPH FORM**

FOR NPS USE ONLY	
RECEIVED	APR 2 1976
DATE ENTERED	NOV 13 1976

SEE INSTRUCTIONS IN *HOW TO COMPLETE NATIONAL REGISTER FORMS*  
TYPE ALL ENTRIES -- ENCLOSE WITH PHOTOGRAPH

**1 NAME**

HISTORIC  
Jefferson Historic District

AND/OR COMMON  
Jefferson Historic District

**2 LOCATION**

CITY, TOWN  
Jefferson

\_\_\_VICINITY OF

COUNTY  
Marengo

STATE  
Alabama

**3 PHOTO REFERENCE**

PHOTO CREDIT Ellen Mertins

DATE OF PHOTO 1975

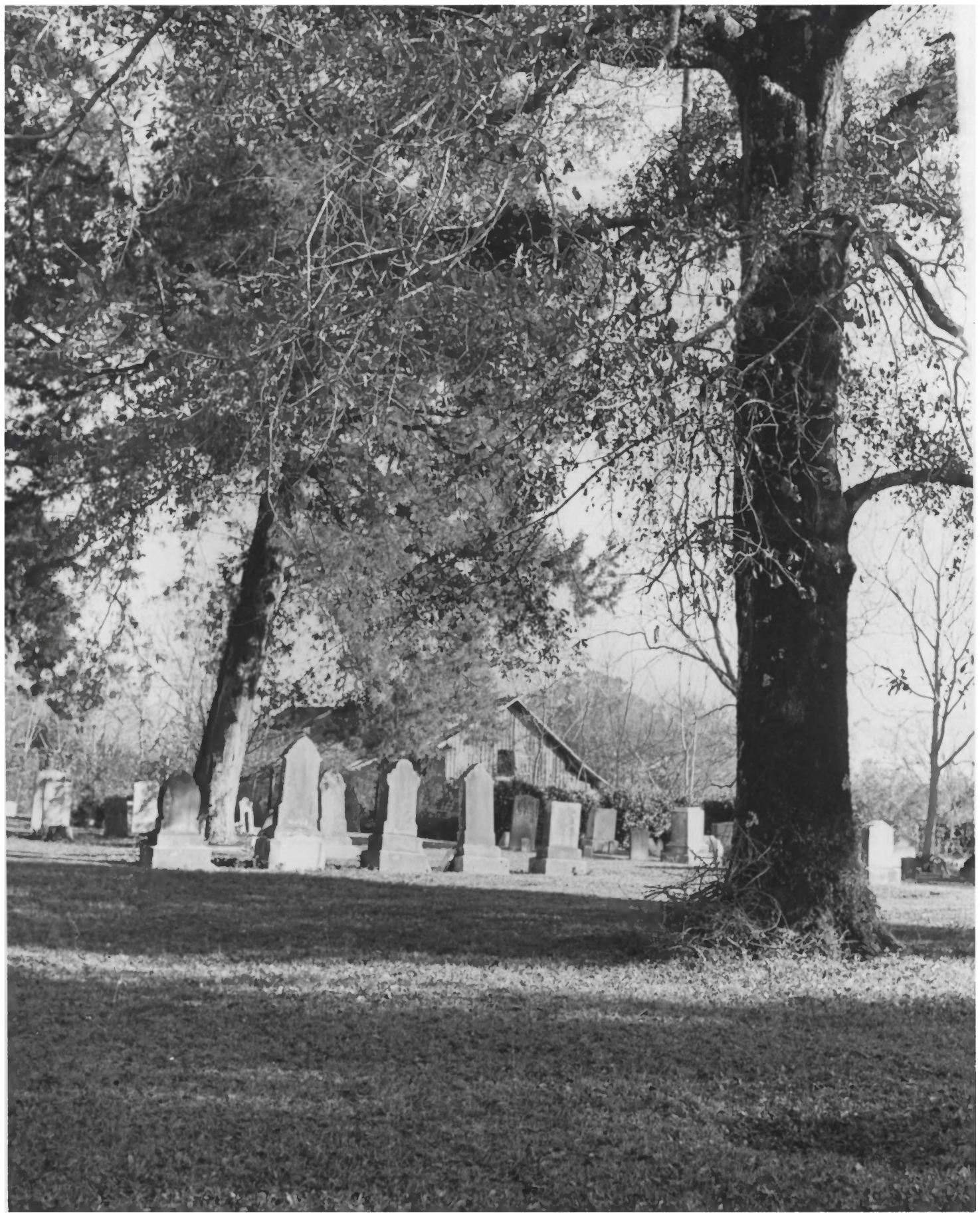
NEGATIVE FILED AT Alabama Historical Commission

**4 IDENTIFICATION**

DESCRIBE VIEW, DIRECTION, ETC. IF DISTRICT, GIVE BUILDING NAME & STREET

PHOTO NO. 9

Jefferson Methodist Church (14).



UNITED STATES DEPARTMENT OF THE INTERIOR  
NATIONAL PARK SERVICE

**NATIONAL REGISTER OF HISTORIC PLACES  
PROPERTY PHOTOGRAPH FORM**

FOR NPS USE ONLY

RECEIVED

APR 2 1976

DATE ENTERED

NOV 13 1976

SEE INSTRUCTIONS IN *HOW TO COMPLETE NATIONAL REGISTER FORMS*  
TYPE ALL ENTRIES -- ENCLOSE WITH PHOTOGRAPH

**1 NAME**

HISTORIC

Jefferson Historic District

AND/OR COMMON

Jefferson Historic District

**2 LOCATION**

CITY, TOWN

Jefferson

— VICINITY OF

COUNTY

Marengo

STATE

Alabama

**3 PHOTO REFERENCE**

PHOTO CREDIT

Ellen Mertins

DATE OF PHOTO

1975

NEGATIVE FILED AT

Alabama Historical Commission

**4 IDENTIFICATION**

DESCRIBE VIEW, DIRECTION, ETC. IF DISTRICT, GIVE BUILDING NAME & STREET

PHOTO NO. 10

Facing east along Cemetery Road, Barns (17) in background.



UNITED STATES DEPARTMENT OF THE INTERIOR  
NATIONAL PARK SERVICE

**NATIONAL REGISTER OF HISTORIC PLACES  
PROPERTY PHOTOGRAPH FORM**

FOR NPS USE ONLY

RECEIVED

APR 2 1976

DATE ENTERED

NOV 13 1976

SEE INSTRUCTIONS IN *HOW TO COMPLETE NATIONAL REGISTER FORMS*  
TYPE ALL ENTRIES -- ENCLOSE WITH PHOTOGRAPH

**1 NAME**

HISTORIC

Jefferson Historic District

AND/OR COMMON

Jefferson Historic District

**2 LOCATION**

CITY, TOWN

Jefferson

\_\_\_VICINITY OF

COUNTY

Marengo

STATE

Alabama

**3 PHOTO REFERENCE**

PHOTO CREDIT

Ellen Mertins

DATE OF PHOTO

1975

NEGATIVE FILED AT

Alabama Historical Commission

**4 IDENTIFICATION**

DESCRIBE VIEW, DIRECTION, ETC. IF DISTRICT, GIVE BUILDING NAME & STREET

PHOTO NO. 11

Facing east along Highway 28, Pace-Rhodes House (11).



UNITED STATES DEPARTMENT OF THE INTERIOR  
NATIONAL PARK SERVICE

**NATIONAL REGISTER OF HISTORIC PLACES  
PROPERTY PHOTOGRAPH FORM**

FOR NPS USE ONLY

RECEIVED APR 2 1976

DATE ENTERED NOV 13 1976

SEE INSTRUCTIONS IN *HOW TO COMPLETE NATIONAL REGISTER FORMS*  
TYPE ALL ENTRIES -- ENCLOSE WITH PHOTOGRAPH

**1 NAME**

HISTORIC

Jefferson Historic District

AND/OR COMMON

Jefferson Historic District

**2 LOCATION**

CITY, TOWN

Jefferson

\_\_\_ VICINITY OF

COUNTY

Marengo

STATE

Alabama

**3 PHOTO REFERENCE**

PHOTO CREDIT

Ellen Mertins

DATE OF PHOTO

1975

NEGATIVE FILED AT

Alabama Historical Commission

**4 IDENTIFICATION**

DESCRIBE VIEW, DIRECTION, ETC. IF DISTRICT, GIVE BUILDING NAME & STREET

PHOTO NO. 12

Facing south toward Hildreth-Simmons House (7), with No. 9 in foreground.