



Atlantic Coastline Railroad
Passenger Depot

1

DOTHAN, AL (HOUSTON Co.)

Track Facades, looking East

Negatives: William Holman

JUNE 1993



Atlantic Coastline RR Passenger Depot #2

DOTHAN, AL

HAWKINS Co.

FRONT FACADE of Bldg, Looking EAST

Negatives: William Holman

JUNE 1993



Atlantic Coastline RR Depot ^{Passenger}

#3

DOTHAN, AL (Houston Co.)

FRONT side of Building, looking East

Negatives: William Holman

JUNE 1993



Atlantic Coastline RR

#4

Passenger Depot

Dothan, AL

Houston Co.

View of Entrance

Negatives: William Holman

JUNE 1993



Atlantic Coastline RR Passenger Depot

DOTHAN, AL

HOUSTON CO.

View of Brackets

Negatives: William Holman

June 1993

#5



Atlantic Coastline Railroad Depot # 6
Dothan, AL (Houston Co.)
Side Facade of Bldg., Looking Northwest

Negatives: William Holman

June 1993



Atlantic Coastline RR Depot

#7

Dolan, AC (Houston Co.)

Side Facade of Bldg, looking Southeast

Negatives: William Halman

June 1993



Atlantic Coastline Railroad # 8
Passenger Depot

Dothan, AL (Houston Co)

View of Window

Negatives: William Holman

June 1993



DOOTHAN, ALA.

1-72

Atlantic Coastline Railroad

#9

Passenger Depot

DOTHAN, AL (HOUSTON Co.)

Track Facade, looking south

Negatives: William Holman

June 1993



#10

UPSTAIRS, Looking West

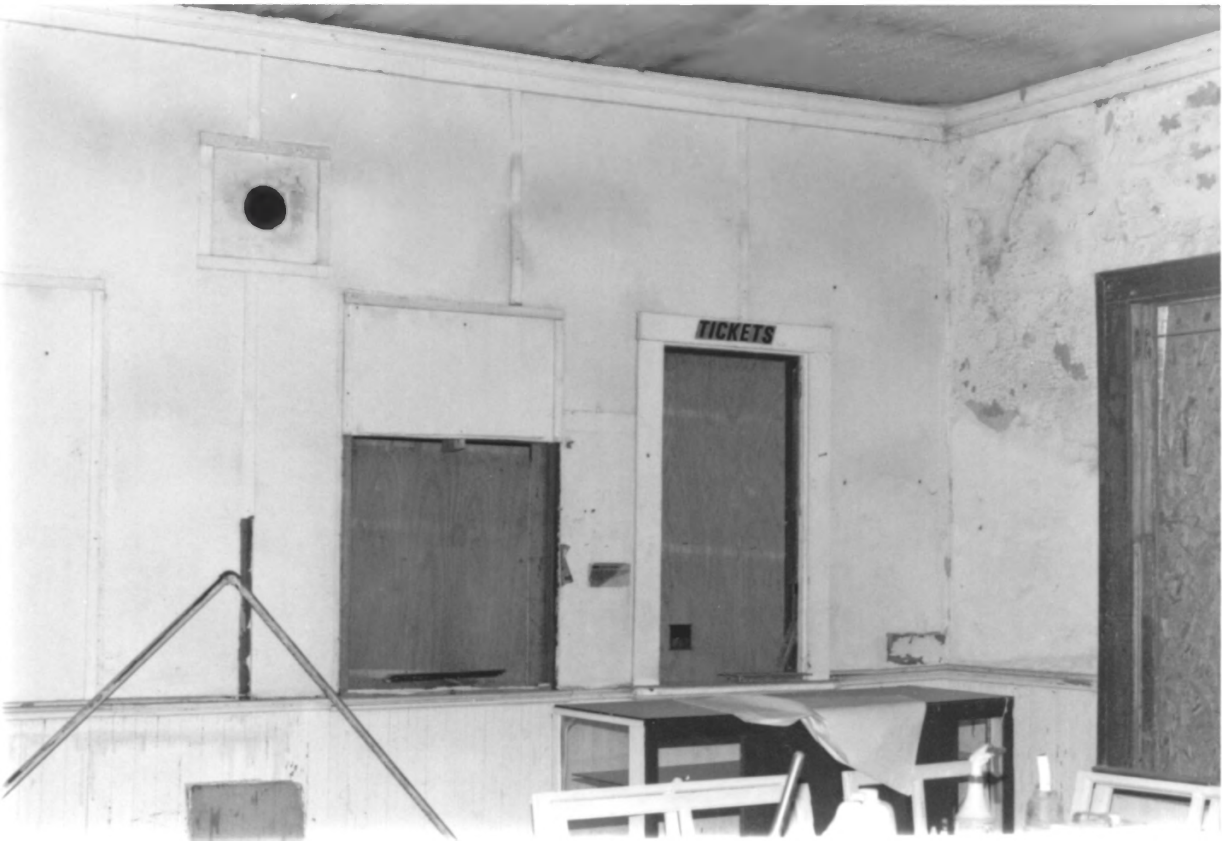
A.C.L. Passenger
Powell St. ^{Station}
Houston (A, AL
OCT 1993



#11

UPSTAIRS, OFFICE AREA

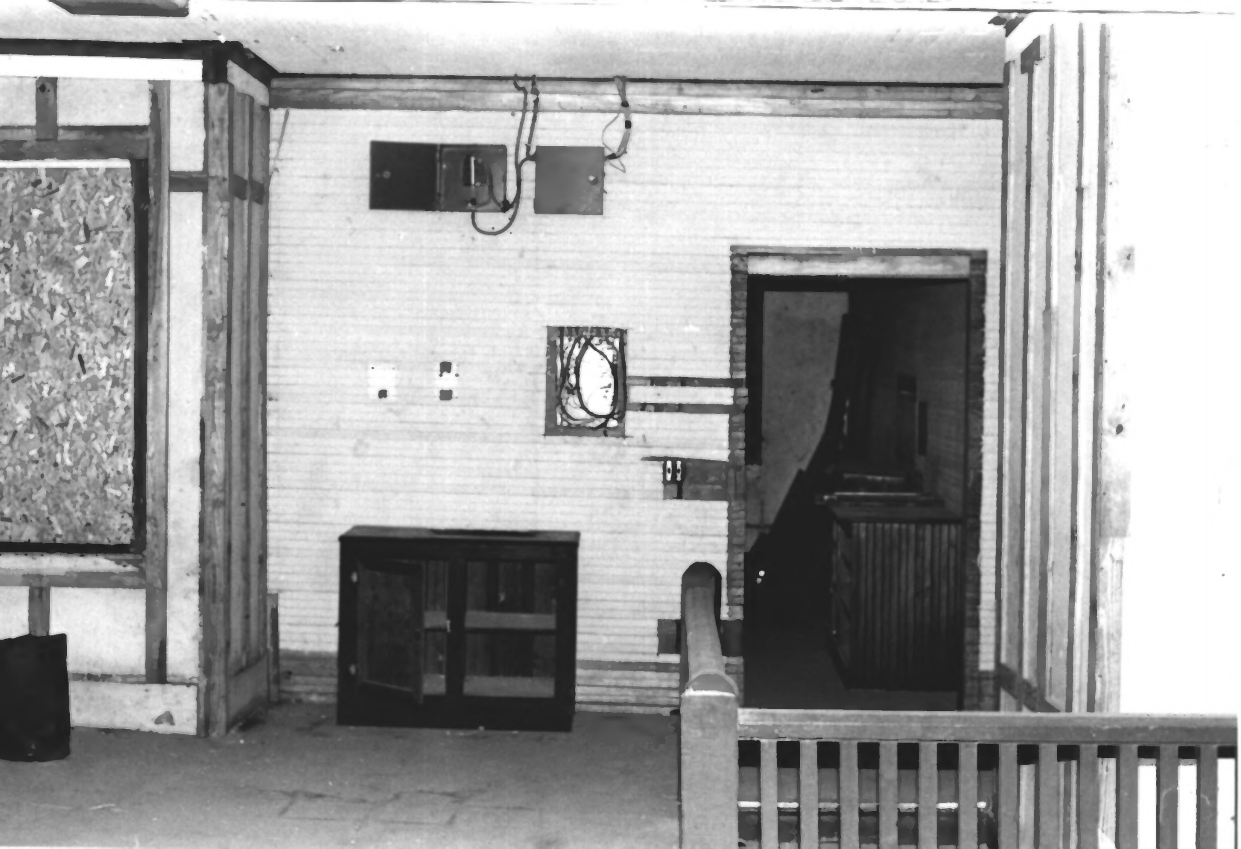
ACL Passenger Station
Powell St
Houston Co., AL
007 1993



#12

DOWNSTAIRS, EAST WAITING ROOM

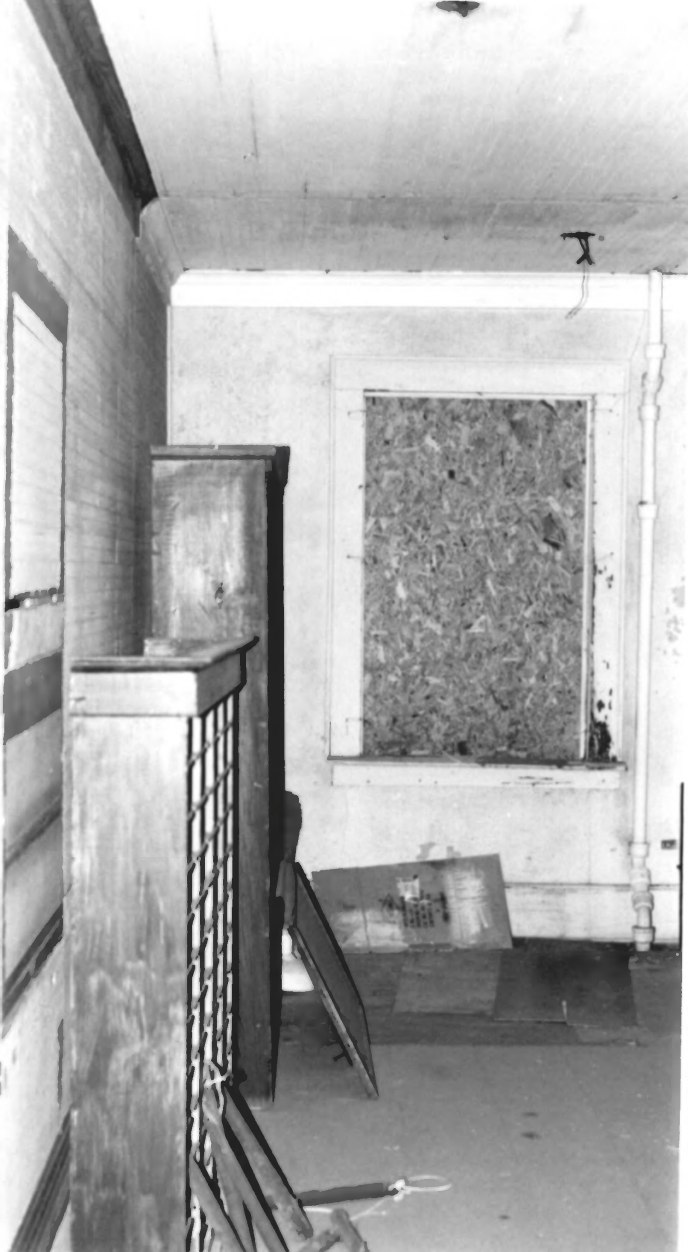
AKL. PASSENGER STATION
POWELL ST
HOUSTON CO. AL
OCT 1993



#13

UPSTAIRS, Looking EAST

A.C.L. Passenger Station
Powell St.
Houston, Co. AL
Oct 1993



#14

UPSTAIRS, OFFICE AREA

A.C.L. Passenger
Station
Powell St
Houston Co., AL
007 1993



#15

DOWNSTAIRS, WEST WAITING
ROOM & TICKET/OFFICE
AREA

A. C. L. Passenger
Powell St. Station
Houston, Co. AL

017 1993



#16

Downstairs, West Waiting
Room

ACL Passenger System
Powell St
Houston Co., AL
007 1993