



B-1337

3000-3100 EAST LOMBARD STREETS, PATTERSON PARK/HIGHLANDTOWN

BALTIMORE CITY, MARYLAND

JENNIFER GOOLD, BETTY BIRD AND ASSOCIATES

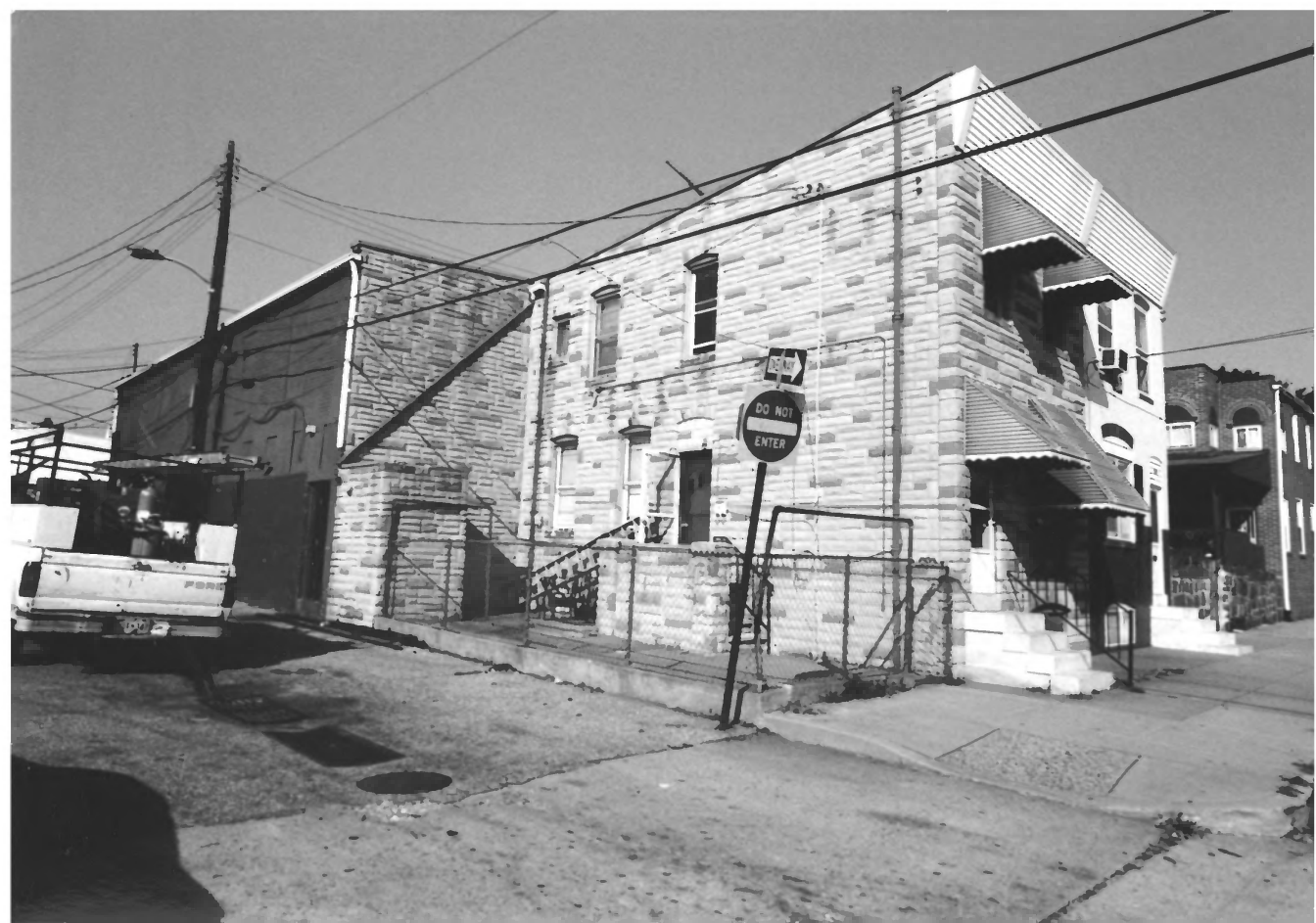
OCTOBER 2001

MD SHPO

view north

Uniform residential blocks. Note corner store.

1 of 73



B-1337

300-302 SOUTH EATON STREET, PATTERSON PARK/HIGHLANDTOWN

BALTIMORE CITY, MARYLAND

JENNIFER GOULD, BETTY BIRD AND ASSOCIATES

OCTOBER 2001

MD SHPO

view northwest

mixed block in eastern part of district, Note residential  
building attached to industrial.

Zof 73



B-1337

2300 BLOCK EAST BALTIMORE STREET, PATTERSON PARK/HIGHLANDTOWN  
BALTIMORE CITY, MARYLAND

JENNIFER GOOLD, BETTY BIRD AND ASSOCIATES

OCTOBER 2001

MD SHPO

view north

3-story Italianate Period rowhouses facing  
Patterson Park. Note marble basements and steps, elaborate  
frieze bands, and cornices.

3 of 73



B-1337

2900 BLOCK EAST BALTIMORE STREET, PATTERSON PARK/HIGHLANDTOWN  
BALTIMORE CITY, MARYLAND

JENNIFER GOULD, BETTY BIRD & ASSOCIATES

OCTOBER, 2001

MD SH: 0

view north

3 story Italianate Period rowhouses facing Patterson  
Park, Note Marble basements and steps,  
cornices, and corner store integrated into block.

8024 - 2 708345 P018

40673





B-1337

145-153 NORTH PATTERSON PARK AVENUE, PATTERSON PARK/HIGHLANDTOWN

BALTIMORE CITY, MARYLAND

JENNIFER GOOLD, BETTY BIRD AND ASSOCIATES

OCTOBER 2001

MD SHPO

view east

2-story Italianate Period rowhouses.

Note comparatively simple facade, mass-produced cornice and frieze panel.

5 of 73



B-1337

14-18 NORTH BRADFORD STREET, PATTERSON PARK/HIGHLANDTOWN  
BALTIMORE CITY, MARYLAND

JENNIFER GOULD, BETTY BIRD AND ASSOCIATES

OCTOBER 2001

MD SHPO

View west

Stable integrated into alley side Italianate row.

6 of 73



B-1337

100-108 NORTH FORT STREET, PATTERSON PARK/HIGHLANDTOWN

BALTIMORE CITY, MARYLAND

JENNIFER GOULD, BETTY BIRD AND ASSOCIATES

OCTOBER 2001

MD SHPO

View west

Small, Italianate Period rowhouses along narrow  
north-south street.

7 of 73



B-1337

400 BLOCK SOUTH DEAN STREET, PATTERSON PARK / HIGHLANDTOWN  
BALTIMORE CITY, MARYLAND

JENNIFER GOOLD, BETTY BIRD AND ASSOCIATES

OCTOBER 2001

MD SHPO

view northwest

Small, Italianate Period rowhouses in  
eastern section of district.

8 of 73



A black and white photograph of a three-story stone building with a prominent gabled roof. The building is constructed of rough-hewn stone with decorative horizontal bands. The second floor features three arched windows, and the first floor has three rectangular windows. A large sign is mounted across the front of the building. The street scene includes a sidewalk, a street with a car and a van, and a street lamp. The sky is clear and bright.

**VENICE TAVERN**

B-1337

339 SOUTH CONKLING STREET, PATTERSON PARK HIGHLANDTOWN  
BALTIMORE CITY, MARYLAND

JENNIFER GOULD, BETTY BIRD AND ASSOCIATES

OCTOBER 2001

MD SHPO

view east

Artistic Period single house. Note combination of  
rock-face and ashlar stone.

9 of 73



B-1337

3512-3514 BANK STREET, PATTERSON PARK/HIGHLANDTOWN  
BALTIMORE CITY, MARYLAND

JENNIFER GOULD, BETTY BIRD AND ASSOCIATES

OCTOBER 2001 .

MD SHPO

view north

Artistic Period duplex. Note use of rock-faced stone.

10 of 73



B-1337

2400 BLOCK EAST BALTIMORE STREET, PATTERSON PARK  
BALTIMORE CITY, MARYLAND  
HIGHLANDTOWN

JENNIFER GOULD, BETTY BIRD AND ASSOCIATES

OCTOBER 2001

MD SHPO

view north

3-story flat-front Artistic Period rowhouses facing  
Patterson Park. Note marble and rock faced stone  
first stories, use of arched windows and stained glass.

11 of 73



B-1337

2800 BLOCK EAST BALTIMORE STREET, PATTERSON PARK/  
BALTIMORE CITY, MARYLAND HIGHLANDTOWN

JENNIFER GOULD, BETTY BIRD AND ASSOCIATES

OCTOBER 2001

MD SHPO

view north

3-story flat front Artistic Period rowhouses facing  
Patterson Park. Note simplified cornices and tinnial  
balls.

12 of 73





B-1337

3200 BLOCK EAST BALTIMORE STREET, PATTERSON PARK/HIGHLANDTOWN  
BALTIMORE CITY, MARYLAND

JENNIFER GOOLD, BETTY BIRD AND ASSOCIATES

OCTOBER 2001

MD SHPO

view north

3-story swell-front Artistic Period rowhouses. Note  
Mansard roofs, mixed materials.

13 of 73



B-1337

2500 BLOCK EAST BALTIMORE STREET, PATTERSON PARK/  
HIGHLANDTOWN

BALTIMORE CITY, MARYLAND

JENNIFER GOOLD, BETTY BIRD AND ASSOCIATES

OCTOBER 2001

HD SHPO

view north

3-story flat front Artistic Period rowhouses facing  
Patterson Park. Note Mansard roofs with dormers, rock  
faced stone facades, and bay windows.

14 of 73



B-1337

2700 BLOCK EAST BALTIMORE STREET, PATTERSON PARK/  
BALTIMORE CITY, MARYLAND HIGHLANDTOWN

JENNIFER GOULD, BETTY BIRD AND ASSOCIATES

OCTOBER 2001

MD SHPO

view north

3-story swell-front Artistic period  
rowhouses facing Patterson Park. Note shallow bow  
windows.

15 of 73



B-1337

100 BLOCK SOUTH LINWOOD STREET, PATTERSON PARK/HIGHLANDTOWN  
BALTIMORE CITY, MARYLAND

JENNIFER GOULD, BETTY BIRD + ASSOCIATES

OCTOBER, 2001

MD SHPO

view east

3-story flat-front Artistic Period rowhouses facing  
Patterson Park. Note terra-cotta ornamentation.

[6 of 73





B-1337

UNIT BLOCK NORTH HILTON AVENUE, PATTERSON PARK/HIGHLANDTOWN

BALTIMORE CITY, MARYLAND

JENNIFER GOULD, BETTY BIRD AND ASSOCIATES

OCTOBER, 2001

MD SHPO

view west

Early 2-story flat-front Artistic Period rowhouses. Note combined use of arched windows and Italianate cornices.

17 of 73



B-1337

2600 BLOCK E. FAIRMOUNT AVENUE, PATTERSON PARK / HIGHLANDTOWN

BALTIMORE CITY, MARYLAND

JENNIFER GOULD, BETTY BIRD AND ASSOCIATES

OCTOBER, 2001

MD SHPO

view north

Simple, 2 story flat front Artistic Period rowhouses.

Note moulded cornices.

18 of 73



B-1377

301-307 SOUTH HIGHLAND AVENUE, PATTERSON PARK/HIGHLANDTOWN  
BALTIMORE CITY, MARYLAND

JENNIFER GOULD, BETTY BIRD AND ASSOCIATES

OCTOBER 2001

MD SHPO

View east

2-story flat-front Artistic Period rowhouses.

Note rock-faced stone facades, arched windows with stained glass, swags on cornices.

19 of 73



B-1337

140-150 NORTH LAKEWOOD AVENUE, PATTERSON PARK/HIGHLANDTOWN

BALTIMORE CITY, MARYLAND

JENNIFER GOULD, BETTY BIRD AND ASSOCIATES

OCTOBER 2001

MD SHPO

view west

2-story swell-front Artistic Period rowhouses. Note alternating bow and rectangular bay windows.

20 of 73





B-1337

148-140 SOUTH HIGHLAND STREET, PATTERSON PARK/HIGHLANDTOWN  
BALTIMORE CITY, MARYLAND

JENNIFER GOULD, BETTY BIRD AND ASSOCIATES

OCTOBER 2001

MD SHPO

view northwest

2-story swell-front Artistic Period  
rowhouses. Note conical roof on end unit.

21 of 73



B-1337

2-8 NORTH ELLWOOD AVENUE, PATTERSON PARK/HIGHLANDTOWN  
BALTIMORE CITY, MARYLAND

JENNIFER GOULD, BETTY BIRD + ASSOCIATES

OCTOBER, 2001

MD SHPO

view west

2-story flat-front Artistic Period rowhouses. Note  
simple facades, finial balls at cornices.

5024 2 100399 P014

22 of 73



B-1337

3000 BLOCK EAST PRATT STREET, PATTERSON PARK/HIGHLANDTOWN

BALTIMORE CITY, MARYLAND

JENNIFER GOOLD, BETTY BIRD AND ASSOCIATES

OCTOBER, 2001

MD SHPO

view north

Variation on flat-front Artistic Period rowhouses with 3-sided bay window on second story. Note rock-faced facades on this row facing Patterson Park.

23 of 73



B-1337

400 BLOCK SOUTH ELLWOOD AVENUE, PATTERSON PARK/HIGHLANDTOWN

BALTIMORE CITY, MARYLAND

JENNIFER GOULD, BETTY BIRD AND ASSOCIATES

OCTOBER, 2001

MD SHPO

view southeast

Porch-front Artistic Period rowhouses  
with 3-sided bay windows on second story.

24 of 73

8024 60001 8- 4205  
3 100304 2000





B-1337

3900 BLOCK EAST PRATT STREET, PATTERSON PARK/HIGHLANDTOWN

BALTIMORE CITY, MARYLAND

JENNIFER GOULD, BETTY BIRD AND ASSOCIATES

OCTOBER, 2001

MD SHPO

view north

Porch-front

Artistic Period rowhouses

without bay

without bay

windows on

second story.

25 of 73

8825 - 2 00295 PATTERSON PARK



B-1337

3800 BLOCK BANK STREET, PATTERSON PARK/HIGHLANDTOWN  
BALTIMORE CITY, MARYLAND

JENNIFER GOULD, BETTY BIRD AND ASSOCIATES

OCTOBER 2001

MD SHPO

view north

Daylight Period rowhouses. Note wider facades,  
porches, and small front yards.

26 of 73



B-1337

3600 BLOCK EAST FAYETTE, PATTERSON PARK / HIGHLANDTOWN  
BALTIMORE CITY, MARYLAND

JENNIFER GOULD, BETTY BIRD AND ASSOCIATES

OCTOBER 2001

MP SHPO

view north

Ca. 1920s rowhouses that are 3-rooms deep with  
porches and front yards

27 of 73



B-1337

400-406 SOUTH EATON STREET, PATTERSON PARK / HIGHLANDTOWN

BALTIMORE CITY, MARYLAND

JENNIFER GOULD, BETTY BIRD AND ASSOCIATES

OCTOBER 2001

MD SHPO

view west

Corner store. Note overhung, angled entry with column, wider windows on first floor.

28 of 73





B-1337

3531 CLAREMONT STREET, PATTERSON PARK/HIGHLANDTOWN  
BALTIMORE CITY, MARYLAND

JENNIFER GOULD, BETTY BIRD AND ASSOCIATES

OCTOBER 2001

MD SHPO

viewsouth

Corner store. Note second story identical to  
that of a rowhouse,

29 of 73



SALE - LEASE  
Call 562-72

SHOE BIZ

MEAT  
75N

B-1337

3600 BLOCK EASTERN AVENUE, PATTERSON PARK/HIGHLANDTOWN

BALTIMORE CITY, MARYLAND

JENNIFER GOULD, BETTY BIRD AND ASSOCIATES

OCTOBER 2001

MD SHPO

view north

2-part commercial blocks in Eastern Avenue corridor.

30 of 73



BRIDAL DISCOUNTS  
BY NAC

NAIL SALON  
310 551 2105

Tuxedo Zone

B-1337

3312-3320 EASTERN AVENUE, PATTERSON PARK/HIGHLANDTOWN

BALTIMORE CITY, MARYLAND

JENNIFER GOULD, BETTY BIRD AND ASSOCIATES

OCTOBER 2001

MD SHPO

view north

2-part commercial blocks in Eastern Avenue corridor.

Note Italianate influence on left, Art Deco on right.

31 of 73



B-1337

3500 BLOCK EAST FAYETTE STREET, PATTERSON PARK / HIGHLANDTOWN

BALTIMORE CITY, MARYLAND

JENNIFER GOULD, BETTY BIRD AND ASSOCIATES

OCTOBER 2001

MD SHPO

view north

2-part commercial blocks within a rowhouse  
block.

32 of 73





B-1337

3500 BLOCK EASTERN AVENUE, PATTERSON PARK/HIGHLANDTOWN  
BALTIMORE CITY, MARYLAND

JENNIFER GOULD, BETTY BIRD AND ASSOCIATES

OCTOBER, 2001

MD SHPO

view north

2-part commercial block in Eastern Avenue corridor.  
showing Arts and Crafts influence.

33 of 73



JOHN'S  
GROCERIES  
LUNCH MEATS

APARTMENT FOR RENT  
679-2888

B-1337

300-312 SOUTH HIGHLAND AVENUE, PATTERSON PARK/HIGHLANDTOWN  
BALTIMORE CITY, MARYLAND

JENNIFER GOULD, BETTY BIRD AND ASSOCIATES

OCTOBER, 2001

MD SHPO

view west

2-part commercial block in South Highland  
Avenue showing Modernist influence.

34 of 73



B-1337

413 SOUTH CONKLING STREET, PATTERSON PARK/HIGHLANDTOWN

BALTIMORE CITY, MARYLAND

JENNIFER GOOLD, BETTY BIRD AND ASSOCIATES

OCTOBER 2001

MD SHPO

view east

Enframed window wall in South Conkling  
Street corridor showing modernist influence.

35 of 73

**CHARM CITY**  
SKATEBOARD SHOP

DC SHOECOUSA

SHOECOUSA

**SHOCKET'S**  
SHIRT JOEY GANG

1ST DISTRICT  
OFFICE  
CITY EMPLOYEES  
MUSIC - TAPES - J.C.



B-1337

3910 - 3918 Eastern Avenue, Patterson Park / Highlandtown Historic District

Baltimore City, Maryland

Julie Darsie, Betty Bird + Associates

12/01

MD SHPO

View North, showing storefronts: enframed window wall types  
on left, one-part commercial block on right

36 of 73

5025 - 1 100935 P031





Epstein's  
DEPARTMENT STORES

Pharmacy

VALU...  
...ALS

FAMILY DRUG

FOR RENT  
410-366-0121

B-1337

3800 Block Eastern Avenue, Patterson Park/Highlandtown Historic District

Baltimore City, Maryland

Julie Parsie, Betty Bird & Associates

12/01

MD SHPO

View Northeast, Non-contributing buildings and altered contributing buildings in 3800 block of Eastern Avenue

820d 596001 1- 5205  
5025 - 1 100969 P028

37 of 73



B-1337

121-131 SOUTH CONKLING STREET, PATTERSON PARK/HIGHLANDTOWN  
BALTIMORE CITY, MARYLAND

JENNIFER GOOLD, BETTY BIRD AND ASSOCIATES

OCTOBER 2001

MD SHPO

view east

2-part commercial block in South Conkling Street  
corridor,

Bot 73

*Epsteins*

DEPARTMENT  
STORES

D. J. LIQUIDATORS

D. J. LIQUIDATORS



B-1337

3819-3821 BANK STREET, PATTERSON PARK/HIGHLANDTOWN  
BALTIMORE CITY, MARYLAND

JENNIFER GOULD, BETTY BIRD AND ASSOCIATES

OCTOBER 2001

MD SHPO

viewsouthwest

2-part commercial block. Note Epstein's  
sign.

39 of 73

Bradford Federal  
Savings Bank The First Bank



B-1337

159 NORTH LUZERNE STREET, PATTERSON PARK/HIGHLANDTOWN  
BALTIMORE CITY, MARYLAND

JENNIFER GOULD, BETTY BIRD AND ASSOCIATES

OCTOBER, 2001

MD SHPO

view south

1-part commercial block. Note high roof-line  
giving building a more monumental appearance.

40 of 73





B-1337

3411 BANK STREET, PATTERSON PARK / HIGHLANDTOWN  
BALTIMORE CITY, MARYLAND

JENNIFER GOULD, BETTY BIRD AND ASSOCIATES  
OCTOBER 2001

MD SHPO

view south

school converted to office building with 1951 facade.

41 of 73



B-1337

2901 POLASKI HIGHWAY, PATTERSON PARK / HIGHLANDTOWN

BALTIMORE CITY, MARYLAND

JENNIFER GOULD, BETTY BIRD AND ASSOCIATES

OCTOBER 2001

MD SHPO

view northwest

Episcopal Church of the Resurrection, constructed

1925.

42 of 73



B-1337

3035 EAST BALTIMORE STREET, PATTERSON PARK/HIGHLANDTOWN

BALTIMORE CITY, MARYLAND

JENNIFER GOULD, BETTY BIRD AND ASSOCIATES

OCTOBER 2001

MD SHPO

view southwest

Bethel Evangelical Reformed Church, constructed 19-12-1914

43 of 79



B-1337

3127 East Baltimore Street, Patterson Park/Highlandtown  
Historic District

Baltimore City, Maryland

Julie Darsie, Betty Bird + Associates

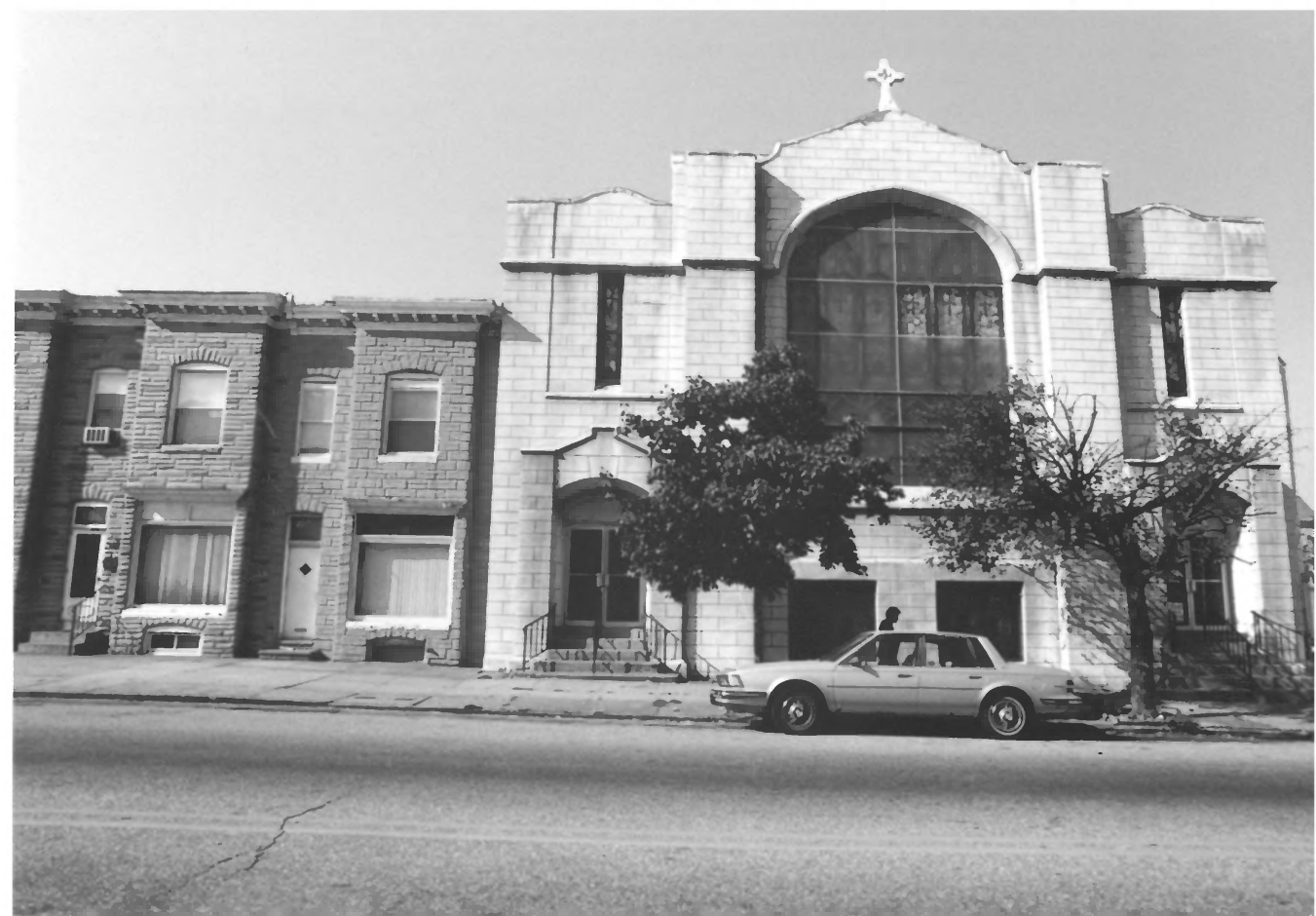
12/01

MD SHPO

View Southeast, Emmanuel English Evangelical Lutheran Church

44 of 73





B-1337

200 SOUTH HIGHLAND AVENUE, PATTERSON PARK/HIGHLANDTOWN  
BALTIMORE CITY, MARYLAND

JENNIFER GOULD, BETTY BIRD AND ASSOCIATES

OCTOBER 2001

MD SHPO

view west

Highland Methodist Episcopal Church, constructed 1908.

45 of 73



B-1337

3300 EAST PRATT STREET, PATTERSON PARK / HIGHLANDTOWN  
BALTIMORE CITY, MARYLAND

JENNIFER GOULD, BETTY BIRD AND ASSOCIATES

OCTOBER 2001

MD SHPO

view northeast

St. Paul's English Evangelical Lutheran Church, constructed  
1924, 1950,

46 of 73



B-1337

401 SOUTH HIGHLAND AVENUE, PATTERSON PARK / HIGHLANDTOWN

BALTIMORE CITY, MARYLAND

JENNIFER GOULD, BETTY BIRD AND ASSOCIATES

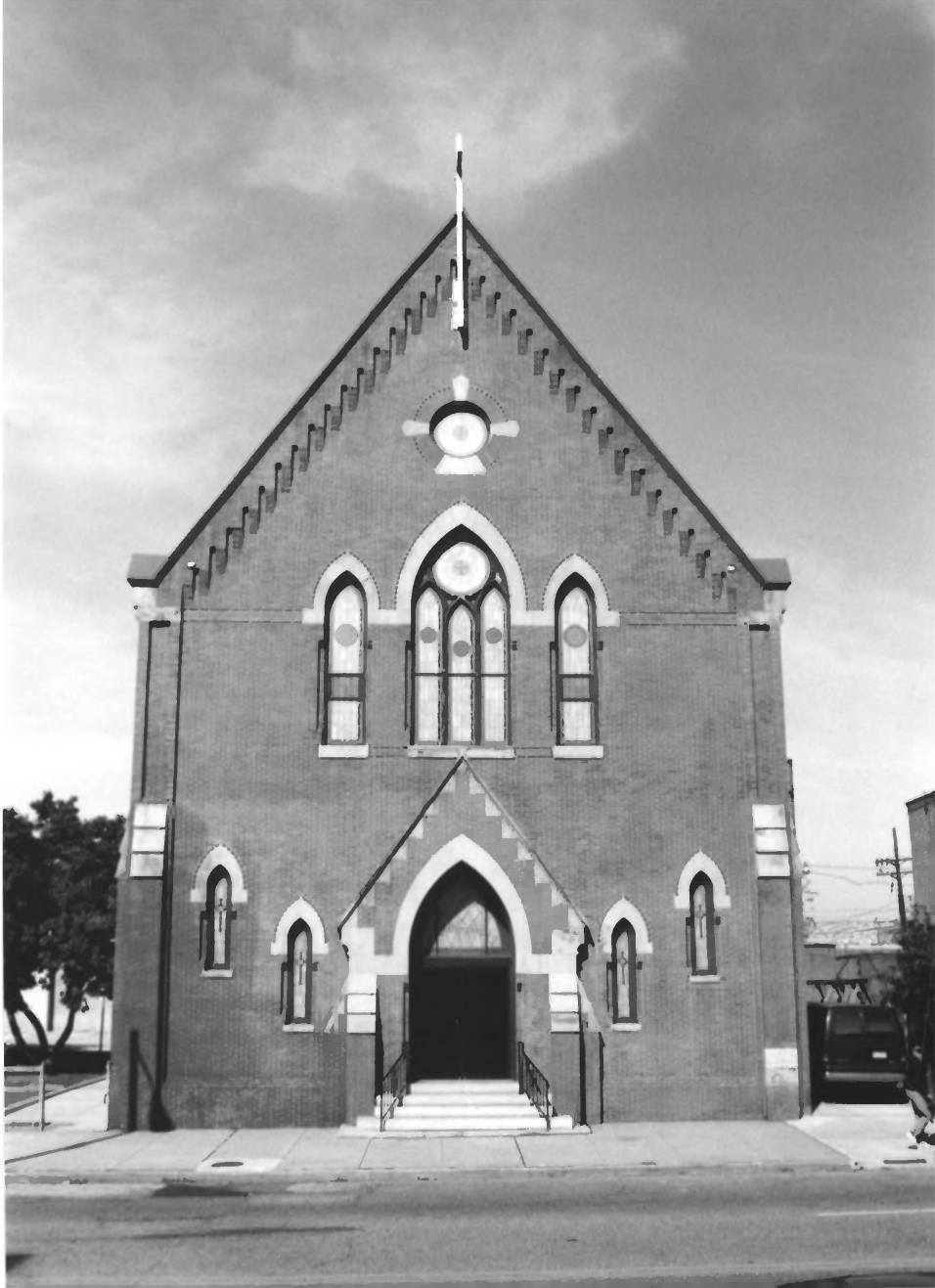
OCTOBER 2001.

MD SHPO

VIEW SOUTH

Nazareth Evangelical Lutheran Church, constructed 1928.

47.4 73



B-1337

3400 BANK STREET, PATTERSON PARK / HIGHLAND TOWN

BALTIMORE CITY, MARYLAND

JENNIFER GOOLD, BETTY BIRD AND ASSOCIATES

OCTOBER 2001

MD SHPO

view north

Abbott Memorial Presbyterian Church, constructed 1882

48 of 73







Something went wrong while we were encoding this page.  
Please check the log file to find out the details.



B-1337

2700 Block East Baltimore Street, Patterson Park / Highland town

Baltimore City, Maryland

Jennifer Gould, Betty Bird and Associates

October 2001

MD SHPO

VIEW northwest

St. Elizabeth of Hungary Roman Catholic Church, 1895 church

50 of 73



B-1337

2700 block East Baltimore Street, Patterson Park / Highland town

Baltimore City, Maryland

Jennifer Gould, Betty Bird and Associates

October 2001

MD SHPO

View north

St. Elizabeth of Hungary Roman Catholic Church, 1912 church.

51 of 73



B-1337

2700 EAST BALTIMORE STREET, PATTERSON PARK/HIGHLANDTOWN  
BALTIMORE CITY, MARYLAND

JENNIFER GOULD, BETTY BIRD AND ASSOCIATES

OCTOBER 2001

MD SHPO

view east

St. Elizabeth of Hungary Roman Catholic Church

1926 School.

52 of 73





B-1337

201-231 South Conkling Street, Patterson Park/Highlandtown Historic District  
Baltimore City, Maryland

Julie Darsie, Betty Bird + Associates

12/01

MD SHPO

View NE, Our Lady of Pompeii Roman Catholic Church

53 of 73



WEGM

B-1337

231 SOUTH CONKLING STREET, PATTERSON PARK / HIGHLANDTOWN

BALTIMORE CITY, MARYLAND

JENNIFER GOULD, BETTY BIRD AND ASSOCIATES

OCTOBER, 2001

MD, SHPO

view east

Our Lady of Pompeii Roman Church, 1951 school

54 of 73



U  
Uptown De Luxe  
De Baltimore, D.C.

2510

B-1337

2911 Pulaski Highway, Patterson Park / Highlandtown Historic District  
Baltimore City, Maryland

Julie Parsie, Betty Bird - Associates

12/01

MD SHPO

View Southeast, Vernacular Church

550673



B-1337

10-14 South Bouldin Street, Patterson Park/Highlandtown Historic District

Baltimore City, Maryland

Julie Davie, Betty Bird + Associates

12/01

MP SHPO

View North, St. Phillips Protestant Episcopal Church: rear of church from alley

56 of 73





B-1337

231 South Eaton Street, Patterson Park / Highlandtown

Baltimore City, Maryland

Jennifer Goold, Betty Bird and Associates

October 2001

MD SHPO

View east

Highlandtown Elementary School No. 237, constructed 1920

57 of 13



B-1337

231 South Eaton Street, Patterson Park/Highlandtown Historic District

Baltimore City, Maryland

Julie Parsie, Betty Bird + Associates

12/01

MD SHPO

View South, Bath House attached to Highlandtown Elementary School #237

58 of 73



HIGHLANDTOWN MIDDLE SCHOOL

B-1337

100 SOUTH ELLWOOD AVENUE, PATTERSON PARK/HIGHLANDTOWN  
BALTIMORE CITY, MARYLAND

JENNIFER GOULD, BETTY BIRD AND ASSOCIATES

OCTOBER 2001

MD SHPO

view southeast

Highlandtown Middle School, constructed 1935.

59 of 73



B-1337

100 SOUTH ELLWOOD AVENUE, PATTERSON PARK/HIGHLANDTOWN

Baltimore City, Maryland

Jennifer Gould, Betty Bird and Associates

October 2001

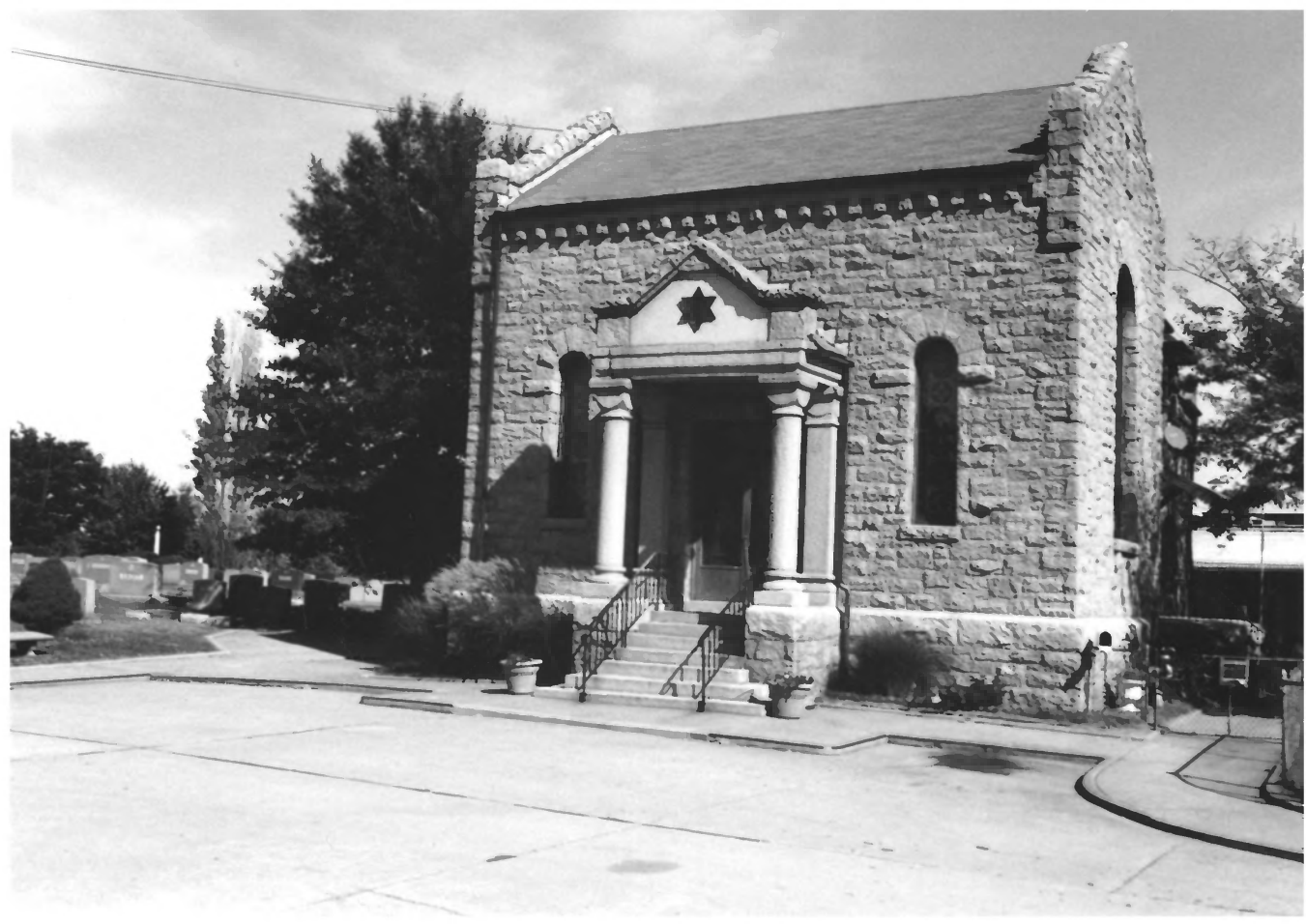
MD JHP0

view northwest

Highlandtown Middle School, constructed 1935

60 of 73





B-1337

3500 EAST BALTIMORE STREET, PATTERSON PARK / HIGHLANDTOWN

BALTIMORE CITY, MARYLAND

JENNIFER GOULD, BETTY BIRD AND ASSOCIATES

OCTOBER 2001

MD SHPO

view northeast

Hebrew Friendship Cemetery Chapel and Gate Lodge, constructed 1910.

6 of 73



B-1337

3134 Eastern Avenue, Patterson Park/ Highland town

Baltimore City, Maryland

Jennifer Gould, Betty Bird and Associates

October 2009

MD SHPO

View northwest

Patterson Theater, constructed 1930.

b2 of 73



LEITCH PRATT FREE LIBRARY

B-1337

158 NORTH LINWOOD AVENUE, PATTERSON PARK/HIGHLAND TOWN

Baltimore City, Maryland

Jennifer Gould, Betty Bird and Associates

October 2001

MD SHPO

View west

Enoch Pratt Free Library Branch No. 13, constructed 1910.

63 of 73



B-1337

310 SOUTH CONKLING STREET, PATTERSON PARK / HIGHLANDTOWN

Baltimore City, Maryland

Jennifer Gould, Betty Bird and Associates

October 2001

MD SHPO

view west

Highland Lodge; AF and AM (left) constructed 1913.

64 of 73





DE O' CANTONNE TRUSS

NO PARKING

NO PARKING

6672

B-1337

3726 BANK STREET, PATTERSON PARK / HIGHLANDTOWN

Baltimore City, Maryland

Jennifer Goold, Betty Bird and Associates

October 2001

MD SHPO

View northwest

LORD BALTIMORE TRUCKING COMPANY, constructed ca. 1910

65 of 73



B-1337

131 North Clinton Street, Patterson Park/Highlandtown  
Baltimore City, Maryland

Jennifer Gould, Betty Bird and Associates

October 2001.

MD SHPO

View east

J. LUTZ GARAGE, constructed 1920.

66 of 73



B-1337

3801-3811 Bank Street, Patterson Park / Highlandtown  
Baltimore City, Maryland

Jennifer Gould, Betty Bird and Associates

October 2001

MD SHPO

View south

Auto body repair shop, constructed ca. 1920,

67 of 73



B-1337

3114-3116 East Fayette Street, Patterson Park / Highlandtown

Baltimore City, Maryland

Jennifer Goold, Betty Bird and Associates

October 2001

MD SHPO

view northwest

Filling and service station, constructed ca. 1930.

68 of 73





B1337

Esther Place and East Avenue, Patterson Park/Highlandtown Historic District

Baltimore City, Maryland

Jolie Darsie, Betty Bird + Associates

12/01

MD SHPO

View NE, Single Car garages at Esther Place and East Avenue

69 of 73



B-1337

3701 BANK STREET, PATTERSON PARK/HIGHLAND TOWN  
BALTIMORE CITY, MARYLAND

JENNIFER GOULD, BETTY BIRD AND ASSOCIATES

OCTOBER 2001

MD SHPO

view southeast

Schluderberg Packing house, left.

70 of 73



B-1337

3701 Bank Street, Patterson Park/Highlandtown

Baltimore City, Maryland

Jennifer Gould, Betty Bird and Associates

October 2001

MD SHPO

View south

Schlumberger Packing House, 1867 block on  
right, ca. 1870s block on left

71 of 75



B-1337

330 South Grundy Street, Patterson Park / Highlandtown Historic District  
Baltimore City, Maryland

Julie Parsie, Betty Bird + Associates

12/01

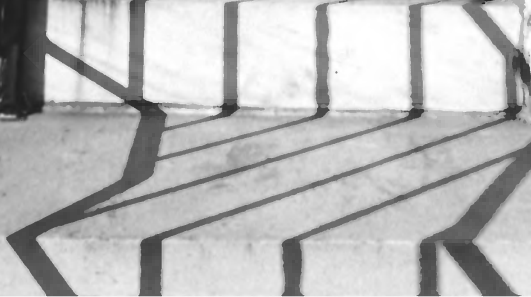
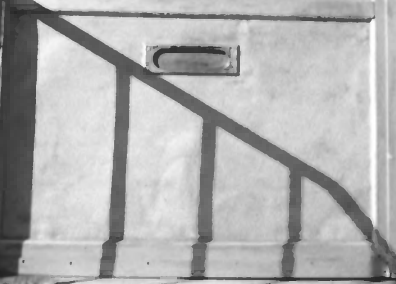
MD SHPO

View NW, I.C. Isaacs + Company

72 of 73



2402



B-1337

2402 EAST BALTIMORE STREET, PATTERSON PARK/HIGHLANDTOWN

BALTIMORE CITY, MARYLAND

JENNIFER GOULD, BETTY BIRD + ASSOCIATES

OCTOBER, 2001

MD SHPO

view north

Painted screen with artigt

73 of 73