



MATHENY, FLOWER & CO.
CARRIAGES,
BUGGIES, WAGONS, ETC.
SAFES + SAFES.

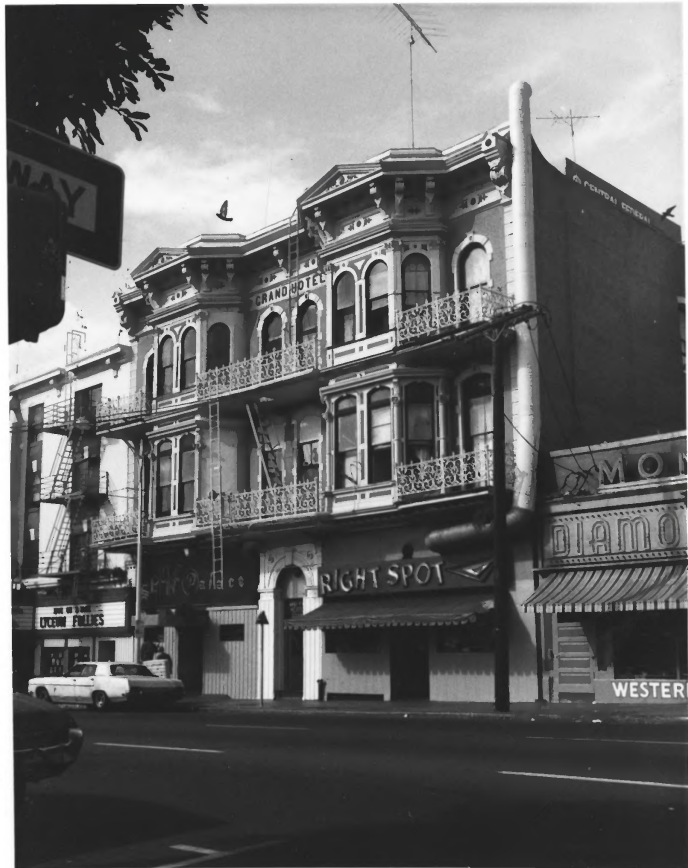
N. MOSER & CO.
REAL ESTATE

WE SELL & REPAIR
BY SAMUEL

1. Grand-Horton Hotel ~~San~~ Diego County
2. 328 "F" St., San Diego, Calif.
3. Unknown
4. 1887
5. Historical Collection-Title Insurance Co.
6. Exterior From The Southeast
7. Photograph #1 of 12

JUN 20 1980

MAY 20 1980



GRAND HOTEL

RIGHT SPOT

DIAMOND

WESTER

WALK UP TO
LUXURY PHONES

WAY

1. Grand-Horton Hotel San Diego Co.
2. 328 "F" St., San Diego, Calif.

3. James Murray, AIA

4. 1979

JUN 20 1980

5. Macy, Henderson & Cole, AIA

6. Exterior From The Southeast

7. Photograph #2 of 12

MAY 20 1980



1. Grand-Horton Hotel San Diego County
2. 328 "F" St., San Diego Calif.
3. James Murray, A.I.A.
4. 1979
5. Macy, Henderson & Cole, AIA
6. Exterior-Stair Entrance
7. Photograph #3 of 12

JUN 20 1980

MAY 20 1980



1. Grand-Horton Hotel *San Diego County*
2. 328 "F" St., San Diego, Calif.
3. James Murray, AIA
4. 1979
5. Macy, Henderson & Cole, AIA
6. Exterior-Arch @ Entrance Stair
7. Photograph #4 of 12

JUN 20 1980

MAY 20 1980



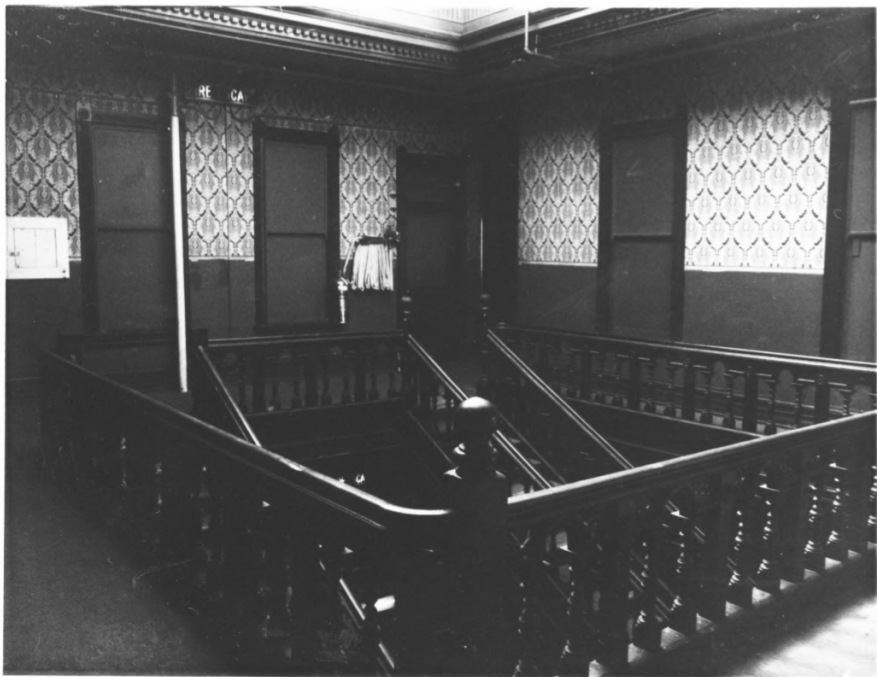
1. Grand-Horton Hotel San Diego County
2. 328 "F" St., San Diego, Calif.
3. James Murray, AIA
4. 1979
5. Macy, Henderson & Cole, AIA
6. Exterior-Balcony Soffit
7. Photograph #5 of 12

JUN 20 1980

MAY 20 1980



1. Grand-Horton Hotel *San Diego County*
2. 328 "F" St., San Diego, Calif.
3. James Murray, AIA
4. 1979 *JUN 20 1980*
5. Macy, Henderson & Cole, AIA
6. Interior-Stairway/Lightwell @ 2nd Floor
7. Photograph #6 of 12 *MAY 20 1980*



1. Grand-Horton Hotel *San Diego County*
2. 328 "F" St., San Diego, Calif.
3. James Murray, AIA
4. 1979
5. Macy, Henderson & Cole, AIA
6. Interior-Stairway/Lightwell @ 3rd Floor
7. Photograph #7 of 12

JUN 20 1980

MAY 20 1980



1. Grand-Horton Hotel *San Diego County*
2. 328 "F" St., San Diego, Calif.
3. James Murray, AIA
4. 1979
5. Macy, Henderson & Cole, AIA
6. Interior-Stairway/Lightwell Skylight
7. Photograph #8 *of 12*

JUN 20 1980

MAY 20 1980



1. Grand-Horton Hotel *San Diego County*
2. 328 "F" St., San Diego, Calif.

3. James Murray, AIA
4. 1979

JUN 20 1980

5. Macy, Henderson & Cole, AIA

6. Interior-Stair Railing

MAY 20 1980

7. Photograph #9 of 12



40

1. Grand-Horton Hotel San Diego County
2. 328 "F" St., San Diego, Calif.
3. James Murray, AIA
4. 1979
5. Macy, Henderson & Cole, AIA
6. Interior-Door
7. Photograph #10 of 12

JUN 20 1980

MAY 20 1980



1. Grand-Horton Hotel *San Diego County*
2. 328 "F" St., San Diego, Calif.
3. James Murray, AIA
4. 1979 JUN 20 1980
5. Macy, Henderson & Cole, AIA
6. Interior-Bay Window
7. Photograph #11 of 12 MAY 20 1980



1. Grand-Horton Hotel *San Diego County*
2. 328 "F" St., San Diego, Calif.
3. James Murray, AIA
4. 1979
5. Macy, Henderson & Cole, AIA
6. Interior-Bay Window Detail
7. Photograph #12 *of 12*

JUN. 20 1980

MAY 20 1980