



MAGYD HUME

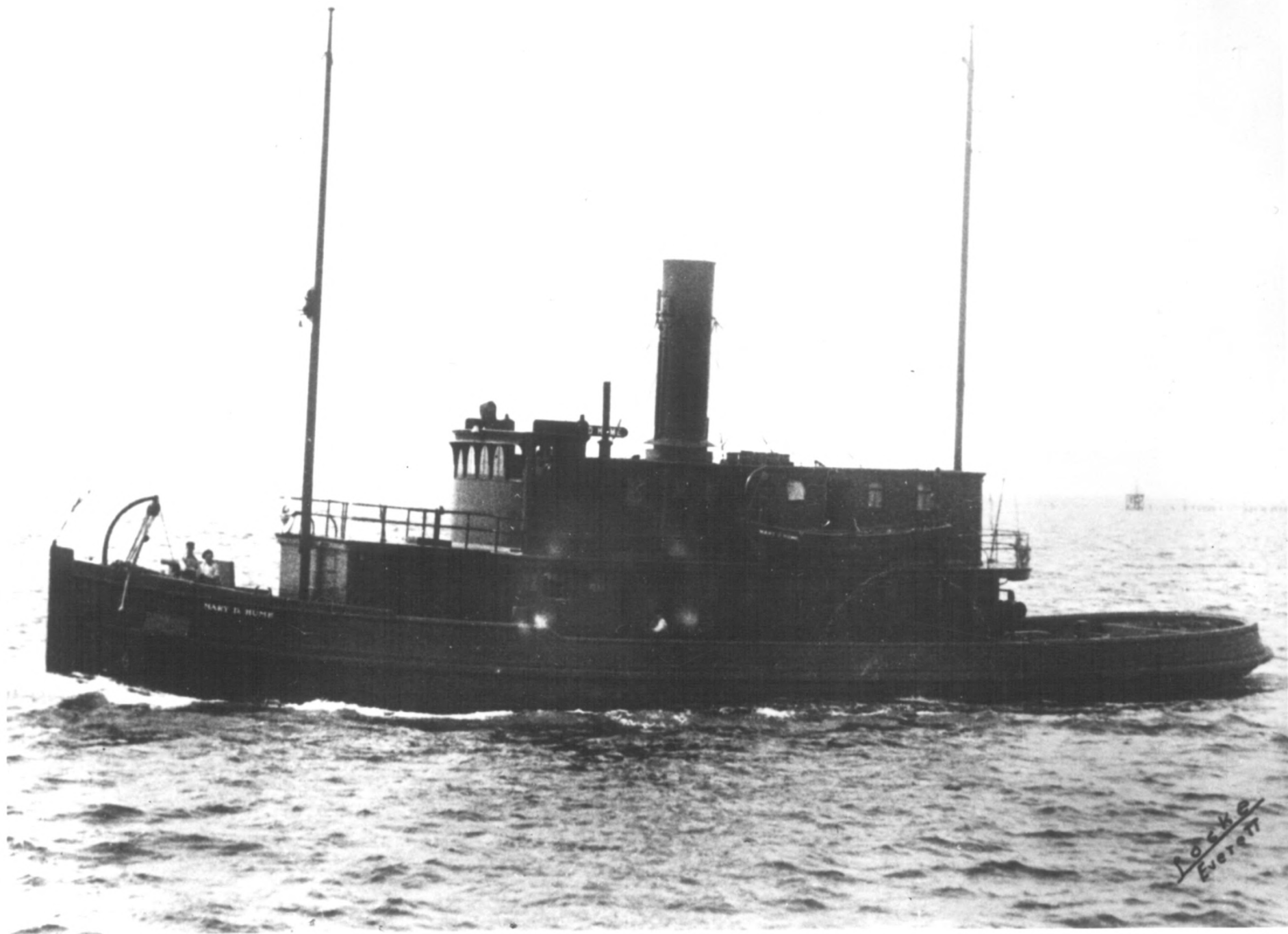
MAGYD HUME

JUN 21 1979

Mary D. Hume, *(freighter)*
Port of Gold Beach Boat Basin
Gold Beach, Curry County, Oregon

AUG 1 1979 DOE

1 of 4 Looking E/NE, Rogue River Bay
Ben Winters photograph, 1978
Curry County Historical Society
Box 1856, Wedderburn OR 97491



JUN 21 1979

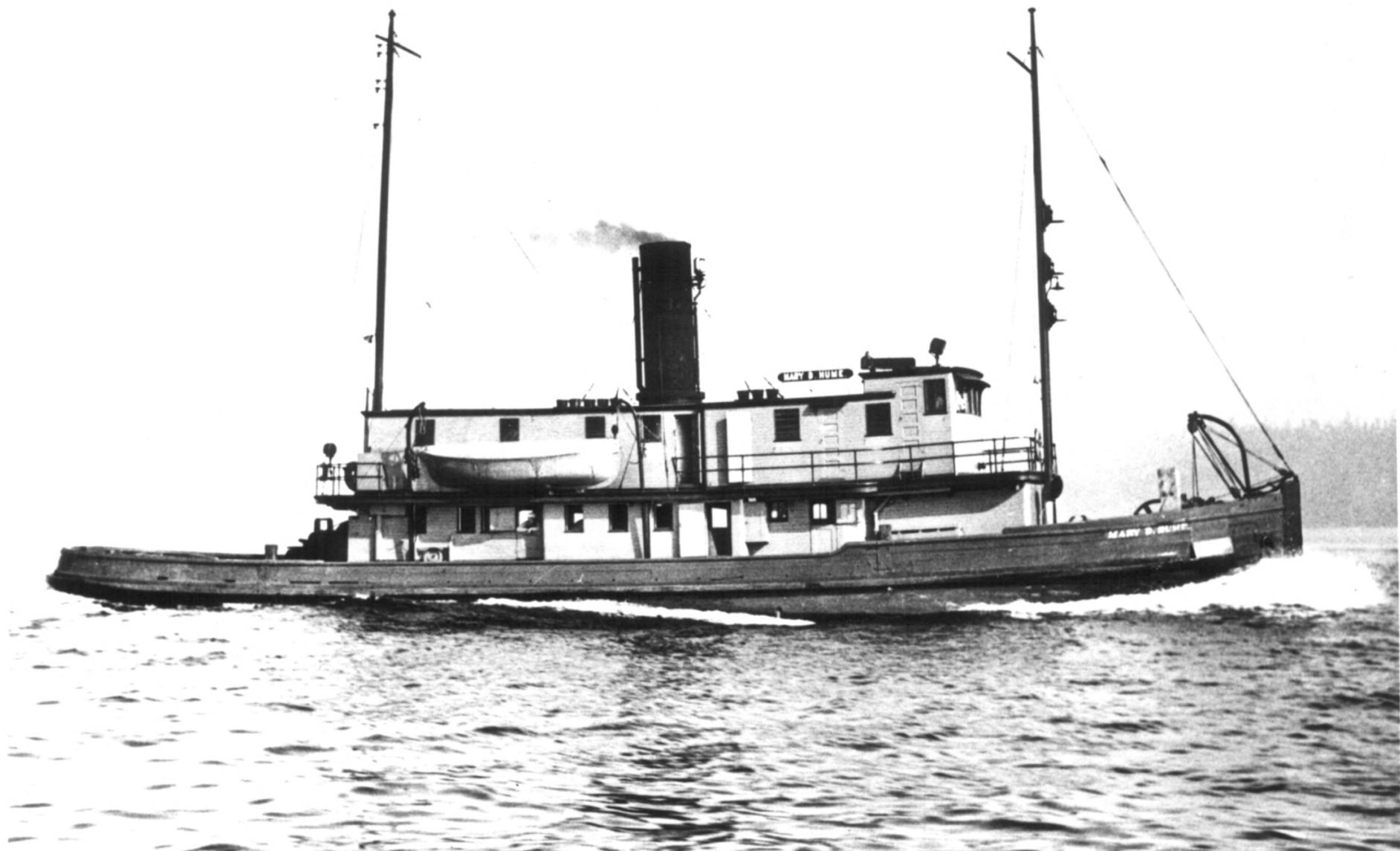
Mary D. Hume, (*freighter*)
Port of Gold Beach Boat Basin
Gold Beach, Curry County, Oregon

2 of 4 Undated Historic View
After 1906, when vessel was
acquired by American Tug Boat
Company of Everett, Washington

and put into service on Puget
Sound, and before her conversion
from steam to diesel power in
1954.

AUG 1 ^{DOE} 1979

Locke photo, Everett, Washington
Source: Curry County Hist. Soc.
P.O. Box 1856
Wedderburn, OR 97491



JUN 21 1979

Mary D. Hume, *(freighter)*
Port of Gold Beach Boat Basin
Gold Beach, Curry County, Oregon

3 of 4 Historic view, 1941
Note full double-deck housing.
Photographer unidentified
Source: Curry County Hist. Soc.

P.O. Box 1856
Wedderburn, OR 97491

DOE

AUG 1 1979



Mary D. Hume (*freighter*)
Port of Gold Beach Boat Basin
Gold Beach, Curry County, Oregon

~~JUN 21 1979~~

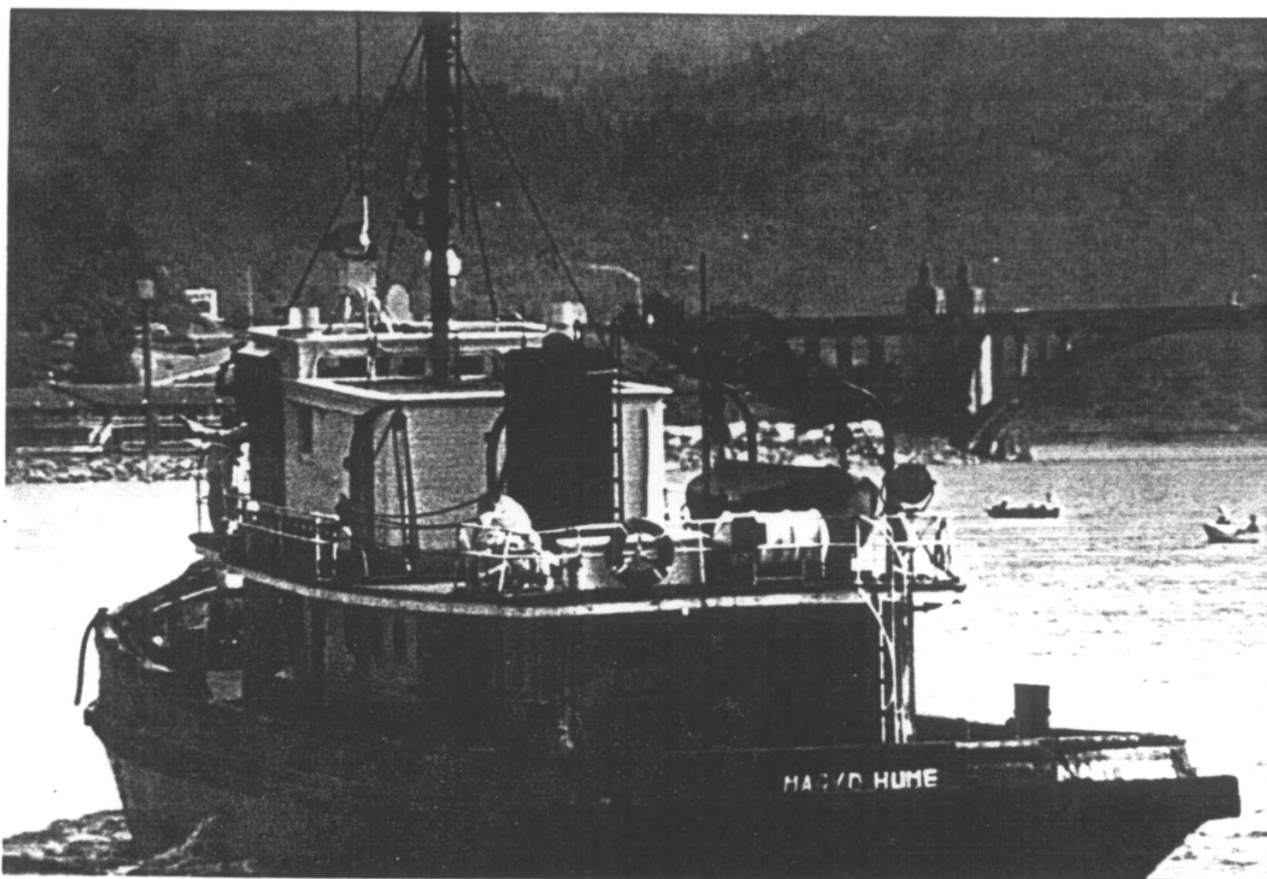
4 of 4 1971 view
Photographer unidentified
Shows modified housing. The
steam engine was replaced with
a 600 h.p. diesel engine in
1954.
Source: Curry County Hist. Soc.
Box 1856, Wedderburn OR 97491

Mary D. Hume was in service as
a tug and tow boat on Puget
Sound and northern Pacific
waters until 1977.

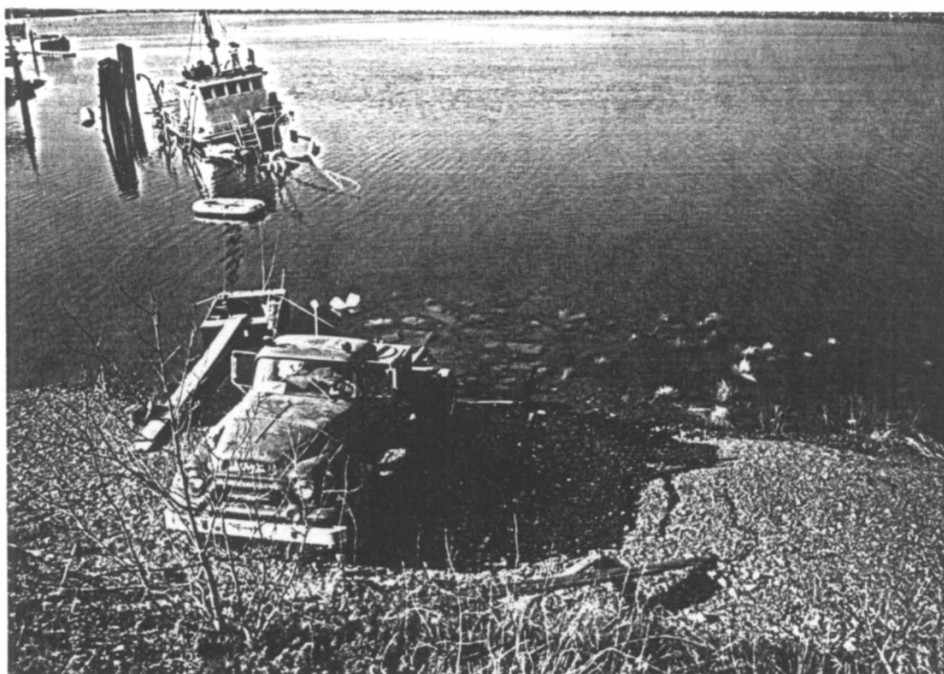
This view documents her
present configuration.

DOE
AUG 1 1979

CURRY COUNTY, OREGON
DIESEL-POWERED TUG MARY D. HUME



Return to the Gold Beach boat basin 1978 (Rogue River Bridge shown upriver) was followed by listing in the National Register of Historic Places in 1979.



Semi-submerged status as of January, 1992-- result of 1985 mooring mishap, has prompted request for evaluation of vessel's eligibility under National Register criteria and guidelines.