

United States Department of the Interior
National Park Service

FEB 21 1989

National Register of Historic Places
Registration Form

NATIONAL
REGISTER

This form is for use in nominating or requesting determinations of eligibility for individual properties or districts. See instructions in *Guidelines for Completing National Register Forms* (National Register Bulletin 16). Complete each item by marking "x" in the appropriate box or by entering the requested information. If an item does not apply to the property being documented, enter "N/A" for "not applicable." For functions, styles, materials, and areas of significance, enter only the categories and subcategories listed in the instructions. For additional space use continuation sheets (Form 10-900a). Type all entries.

1. Name of Property

historic name Rockland Trust Company
other names/site number _____

2. Location

street & number 288 Union Street not for publication
city, town Rockland N/A vicinity
state Mass. code 025 county Plymouth code 023 zip code 02370

3. Classification

Ownership of Property	Category of Property	Number of Resources within Property	
<input checked="" type="checkbox"/> private	<input checked="" type="checkbox"/> building(s)	Contributing	Noncontributing
<input type="checkbox"/> public-local	<input type="checkbox"/> district	<u>1</u>	<u>0</u> buildings
<input type="checkbox"/> public-State	<input type="checkbox"/> site	_____	_____ sites
<input type="checkbox"/> public-Federal	<input type="checkbox"/> structure	_____	_____ structures
	<input type="checkbox"/> object	<u>1</u>	<u>0</u> objects
			<u>0</u> Total

Name of related multiple property listing:
N/A

Number of contributing resources previously listed in the National Register 0

4. State/Federal Agency Certification

As the designated authority under the National Historic Preservation Act of 1966, as amended, I hereby certify that this nomination request for determination of eligibility meets the documentation standards for registering properties in the National Register of Historic Places and meets the procedural and professional requirements set forth in 36 CFR Part 60. In my opinion, the property meets does not meet the National Register criteria. See continuation sheet.

Valerie A. Taenage 2/8/89
Signature of certifying official Date

Executive Director of Mass. Historical Commission, State Historic Pres. Officer
State or Federal agency and bureau

In my opinion, the property meets does not meet the National Register criteria. See continuation sheet.

Signature of commenting or other official Date

State or Federal agency and bureau

5. National Park Service Certification

I, hereby, certify that this property is:

- entered in the National Register. See continuation sheet.
- determined eligible for the National Register. See continuation sheet.
- determined not eligible for the National Register.
- removed from the National Register.
- other, (explain:)

Beth L. Searse 4-7-89

Signature of the Keeper Date of Action

6. Function or Use

Historic Functions (enter categories from instructions)

Current Functions (enter categories from instructions)

Commerce: Trade:

Commerce: Trade

Financial Institution: Bank

Financial Institution: Bank

7. DescriptionArchitectural Classification
(enter categories from instructions)

Materials (enter categories from instructions)

Later 19th & earlier 20th Century Revivals
Georgian Revivalfoundation Brick
walls Brick; Cast Stone
roof Tar; Stone
other _____

Describe present and historic physical appearance.

The Rockland Trust Company stands on the southwest corner of Union Street, Rockland's major commercial thoroughfare, and Taunton Avenue. The stretch of Union Street that constitutes the town's commercial center (between Water Street and North Street) is a scattered collection of commercial buildings, many of which are converted nineteenth century residential buildings or mid-twentieth century construction. Although there are other historic properties in the immediate vicinity, a cohesive district does not survive. The secondary streets surrounding the commercial center are residential in character, comprised primarily of late-nineteenth and early twentieth century buildings of moderate style. The Trust Company is rectangular in plan and occupies only a small portion of its irregularly shaped lot. The existing structure is the result of several phases of construction, the first being the original two-story main block in 1917. A small one-story wing had been added to the west elevation prior to 1923. In 1923, the west elevation addition was raised to two-stories and a one-story addition was constructed at the south elevation. In 1947, a second story was added to the south wing and a two-story addition was built on the west end of the building. In 1974 a three-story addition was constructed at the rear of the building.

The original building is constructed of red brick (laid in Flemish bond) trimmed with cast stone elements and rises to a flat roof framed by a brick parapet with cast stone coping. The facade (east elevation) possesses the bank's main entry, which consists of fourteen-panel pocket doors designed to secure the interior when the bank is not open for transactions and a large two-pane transom recessed within a cast stone enframingent with consoles and a dentilled entablature. Above the entry an arched window opening formed by radiating bricks and decorated with a scrolled keystone contains a four-part window. All fenestration at the facade is set within massive fluted columns and wide pilasters supporting a full entablature. Above the entablature, a brick parapet contains a granite balustrade.

The north and south elevations of the original building are identical, each is symmetrically composed and is part of three two-story arched window openings which are formed by radiating bricks and possess simple granite impostes and scrolled keystones. Above the windows a cast stone belt course and dentilled cornice extend across the building.

United States Department of the Interior
National Park Service

National Register of Historic Places Continuation Sheet

Section number 7 Page 1

Rockland Trust Company
Rockland, MA

All additions to the building are of red brick, laid in Flemish bond and possess detail which is similar to that of the original structure. The south addition and two early east additions possess symmetrical fenestration with window openings trimmed with cast stone sills and containing 3/3 sash. Each addition possesses a moulded stone cornice beneath a brick parapet.

The 1974 addition is contemporary in design, with fenestration emphasizing verticality. The addition possesses few ornamental details.

Continued

United States Department of the Interior
National Park Service

National Register of Historic Places Continuation Sheet

Section number 7 Page 2

Rockland Trust Company
Rockland, MA

Archeological Statement

No prehistoric sites are currently recorded on the property oar in the town of Rockland. The lack of sites likely results from underreporting, more sites probably exist. In general, however, the potential for prehistoric or historic sites seems low as a result of the size of the parcel, Trust Company construction and the location of the parcel within the major commercial thoroughfare of town.

8. Statement of Significance

Certifying official has considered the significance of this property in relation to other properties:

 nationally statewide locallyApplicable National Register Criteria A B C DCriteria Considerations (Exceptions) A B C D E F G

Areas of Significance (enter categories from instructions)

Period of Significance

Significant Dates

Architecture1917-19231917Commerce1923Economics

Cultural Affiliation

N/A

Significant Person

N/A

Architect/Builder

Thomas E. James & Co., Boston MA

State significance of property, and justify criteria, criteria considerations, and areas and periods of significance noted above.

The Rockland Trust Company possesses integrity of location, design, setting, materials, and association with the development of Rockland as independent from the town of Abington. In addition to being a stronghold of the community for over seventy years the building remains a major architectural monument on Rockland's major thoroughfare. The Rockland Trust Company is of local significance and meets Criteria A and C for listing on the National Register of Historic Places.

Rockland is a town occupying about ten square miles, located approximately twenty miles southeast of Boston. Prior to 1874, Rockland formed the east Ward of the town of Abington and was known as East Abington. Settled in the late seventeenth and early eighteenth centuries, the area was attractive for its rich woodlands and developed a lumber industry early in its history. The shoe manufacturing industry first appeared in Rockland in the late eighteenth century and became the focus of the community's economy by the mid-nineteenth century.

Rockland was incorporated in 1874 as the result of a dispute over the construction of an expensive school building in Abington Center in 1871 and the belief that East Abington could develop into a more successful industrial community if separated from Abington. The late nineteenth and early twentieth centuries saw the continued dominance of the shoe industry with fewer, but larger, manufacturers and an increase in related industries such as the Thompson Shoe Shine Factory and S. E. Packard & Sons paper box factory. Rockland's most prosperous period included the years leading up to and including World War I. The subsequent years of the Great Depression resulted in the decline of the local shoe industry.

The Rockland Trust Company was established on September 30, 1907, succeeding the First National Bank of Rockland. At the outset the Company had a capital surplus of \$120,000 and deposits of less than \$250,000. Organized to "promote the business activity and growth of Rockland", the new bank was headed by James W. Spence, & Company (shoemaker) and its vice-president Alfred Donovan, president of shoe manufacturers E. T. Wright & Company. For the first ten years of its existence, the bank's offices were located across Union Street at the corner of Church Street, in the old Rockland Savings Bank Building. The

See continuation sheet

9. Major Bibliographical References

Hurd, D. Hamilton. History of Plymouth County, Massachusetts. (Philadelphia: J.W. Lewis & Co.), 1884.

Rockland Standard, May 11, 1917.

Rockland Standard, December 17, 1917.

Rockland Standard, October 26, 1923.

Rockland Standard, Research Reporter, Martha G. Campbell, February 12, 1969.

Rockland Trust Company Archives.

See continuation sheet

Previous documentation on file (NPS):

preliminary determination of individual listing (36 CFR 67) has been requested

previously listed in the National Register

previously determined eligible by the National Register

designated a National Historic Landmark

recorded by Historic American Buildings

Survey # _____

recorded by Historic American Engineering

Record # _____

Primary location of additional data:

State historic preservation office

Other State agency

Federal agency

Local government

University

Other

Specify repository:

Mass. Historical Commission

10. Geographical Data

Acreeage of property Over 1.5 Acres

UTM References USGS Quad: Weymouth, MA 1:25,000 Scale

A 19 341620 4666455
Zone Easting Northing

C _____

B _____
Zone Easting Northing

D _____

See continuation sheet

Verbal Boundary Description

Beginning at the southwest corner of Union Street and Taunton Ave., running west 479 feet, then south approximately 160 feet, then east approximately 240 feet, then south approximately 100 feet, then east approximately 83 feet, then north approximately 120 feet, then west approximately 35 feet, then north approximately 103 feet, then east approximately 153 feet to Union Street, then north 64 feet to begining.

See continuation sheet

Boundary Justification

The boundary contains the present property of the Rockland Trust Company building.

See continuation sheet

11. Form Prepared By

name/title Christine Scott Beard, Pres. Consultant with Betsy Friedberg, NR Director, MHC
organization Mass. Historical Commission date 1/24/89
street & number 80 Boylston St. telephone 617-727-8470
city or town Boston state MA zip code 02116

United States Department of the Interior
National Park Service

National Register of Historic Places
Continuation Sheet

Section number 8 Page 1

Rockland Trust Company
Rockland, MA

Rockland Savings Bank Building was the largest building in Rockland at the time of its construction in 1891, with five full storefronts along Union Street and four more along Church Street. At the principal corner of the building,, Union and Church Streets, stood a 3 1/2 story diagonal tower which contained the building's main entry. This entry was used by the First National Bank of Rockland, later the Rockland Trust Company, while the Rockland Savings Bank was at 5 Church Street.

By 1917 the Rockland Trust Company had grown to show a capital surplus of \$200,000 and had deposits of over \$1,750,000. Because the Trust Company had grown so rapidly and greater growth was projected, they were compelled to construct a new bank building that would be fitting of a company that had experienced so much success in a decade. The Trust Company selected one of the most desirable properties in Rockland's business section for its new building. On March 3, 1916 The Rockland Standard reported "one of the biggest real estate transactions in Rockland in recent years"; the Trust Company had purchased the estate of David H. Blanchard, which included five acres of land on the west side of Union Street, south of Taunton Avenue. The property had 70' of frontage on Union Street and was 1,200' deep. A house stood on the property at the time it was purchased, which had been constructed in ca. 1815 by Reverend Samuel Colburn, pastor of the First Congregational Church. When the Trust Company was constructed the house was moved northerly to face Taunton Avenue.

The Company selected Boston architect Thomas M. James, principal in the firm Thomas James & Company, to design the new bank, because he specialized in the design of banks. James was born and educated in the Boston area and received his architectural training in the office of Samuel J. Brown. Prior to 1909, James practiced under the firm name Hill & James. Among James' most important works are the National Bank at Springfield, Massachusetts, Phoenix National Bank in New York, National Bank of Commerce in New London, Connecticut, and the First National Bank at Fort Wayne, Indiana.

Continued

United States Department of the Interior
National Park Service

National Register of Historic Places Continuation Sheet

Section number 8 Page 2

Rockland Trust Company
Rockland, MA

James elected to design the new bank in the Georgian Revival style, imparting an image of security to its patrons; this is one reason the style became popular for banking institutions in the early twentieth century. The Trust Company presents an imposing ediface with its massive columns and pilasters supporting a full entablature. The structure is typical of Georgian Revival buildings in its use of red brick laid in Flemish bond. It retains all major elements of its original design, including wide belt courses, dentilled cornices, balustrades, and large arched windows with pronounced keystones.

Today the Trust Company is the largest bank in Rockland and has approximately 20 branches in surrounding towns.

UNITED STATES DEPARTMENT OF THE INTERIOR
NATIONAL PARK SERVICE

NATIONAL REGISTER OF HISTORIC PLACES
EVALUATION/RETURN SHEET

REQUESTED ACTION: NOMINATION

PROPERTY NAME: Rockland Trust Company

MULTIPLE NAME:

STATE & COUNTY: MASSACHUSETTS, Plymouth

DATE RECEIVED: 2/21/89 DATE OF PENDING LIST: 3/07/89
DATE OF 16TH DAY: 3/23/89 DATE OF 45TH DAY: 4/07/89
DATE OF WEEKLY LIST:

REFERENCE NUMBER: 89000218

NOMINATOR: STATE

REASONS FOR REVIEW:

APPEAL: N DATA PROBLEM: N LANDSCAPE: N LESS THAN 50 YEARS: N
OTHER: N PDIL: N PERIOD: N PROGRAM UNAPPROVED: N
REQUEST: N SAMPLE: N SLR DRAFT: Y NATIONAL: N

COMMENT WAIVER: N

ACCEPT RETURN REJECT 4/7/89 DATE

ABSTRACT/SUMMARY COMMENTS:

Locally significant bank building executed in Georgian Revival mode of eclecticism popular in the early 20th century. The bank has historic associations with Rocklands rapid growth in the WWI era.

RECOM./CRITERIA Accept A+C
REVIEWER Savage
DISCIPLINE Architectural History
DATE 7-7-89

DOCUMENTATION see attached comments Y/N see attached SLR Y/N

CLASSIFICATION

count resource type

STATE/FEDERAL AGENCY CERTIFICATION

FUNCTION

historic current

DESCRIPTION

architectural classification
 materials
 descriptive text

SIGNIFICANCE

Period Areas of Significance--Check and justify below

Specific dates Builder/Architect
Statement of Significance (in one paragraph)

summary paragraph
 completeness
 clarity
 applicable criteria
 justification of areas checked
 relating significance to the resource
 context
 relationship of integrity to significance
 justification of exception
 other

BIBLIOGRAPHY

GEOGRAPHICAL DATA

acreage verbal boundary description
 UTM's boundary justification

ACCOMPANYING DOCUMENTATION/PRESENTATION

sketch maps USGS maps photographs presentation

OTHER COMMENTS

Questions concerning this nomination may be directed to

_____ Phone _____

Signed _____ Date _____



Rockland Trust Company
Rockland, MA

North Elevation

Rockland Trust Co.
Rockland, MA
North Elevation



ROCKLAND TRUST COMPANY
Rockland, Massachusetts

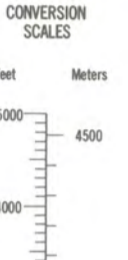
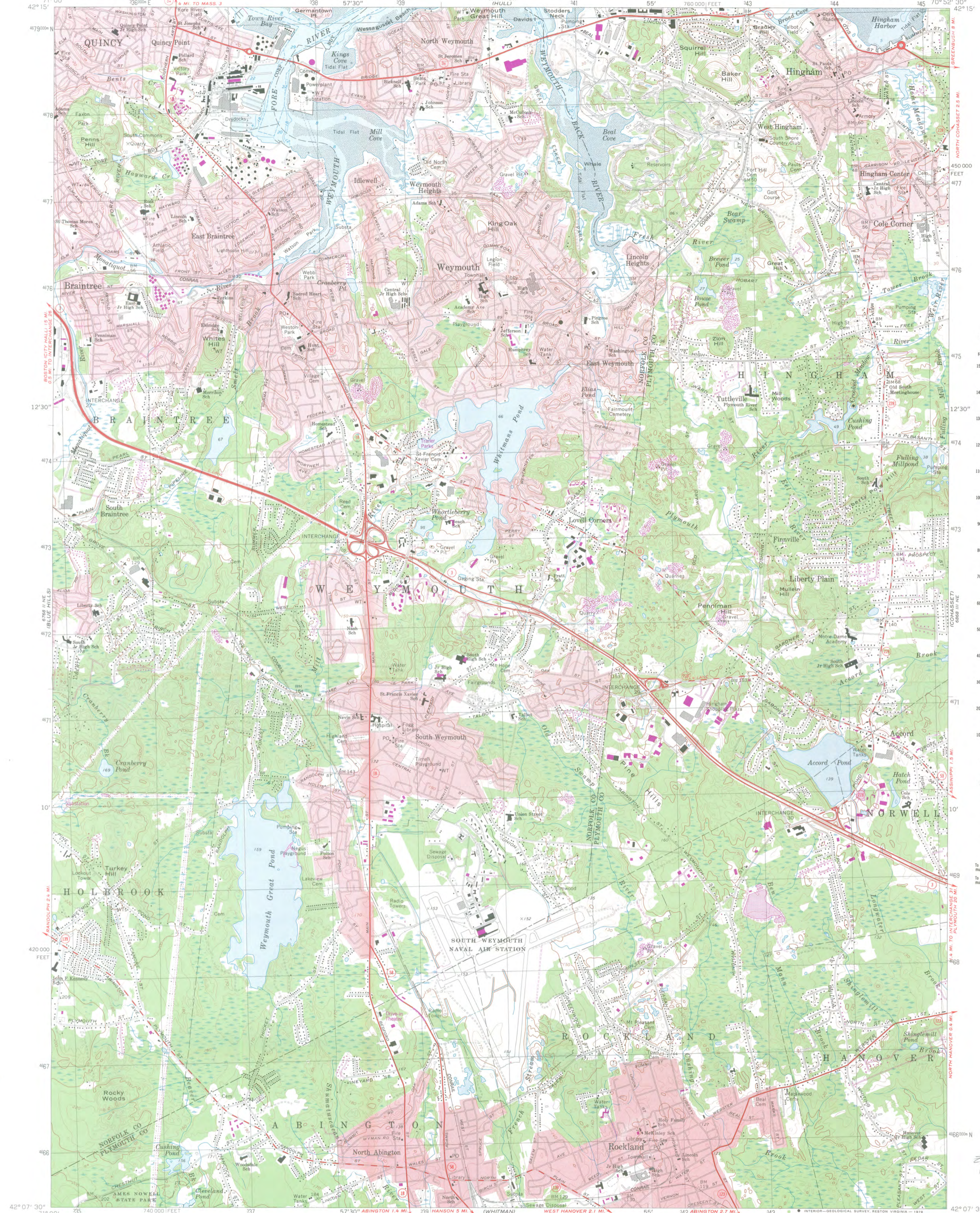
PHOTOGRAPHER: Christine Scott Beard
February, 1987
ACT for Massachusetts
45 School Street
Boston, MA

VIEW: Looking west at Rockland Trust Company
(288 Union Street)

Rockland Trust Co.
Rockland, MA

Photographer:
Christine Scott Beard
February, 1987
ACT for MASS
45 School St.
Boston, MA

View: Looking west at
Rockland Trust Co.
288 Union St.

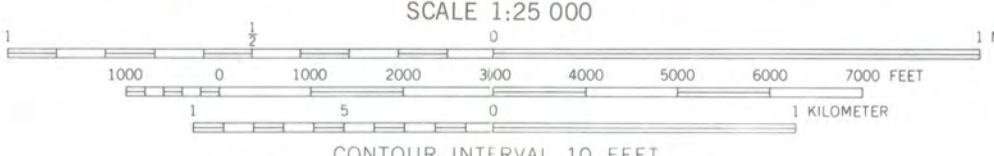
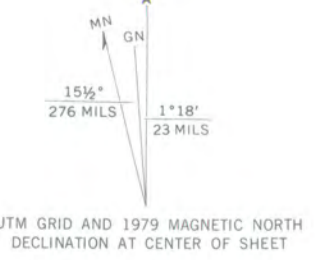


Feet	Meters
1	3048
2	6096
3	9144
4	12192
5	15240
6	18288
7	21288
8	24288
9	27288
10	30288

To convert feet to meters multiply by 3048
To convert meters to feet multiply by 3.2808

Zone Easting Northing
19 3162 46045

Mapped, edited, and published by the Geological Survey
Control by USGS, USC&GS, and Massachusetts Geodetic Survey
Planimetry by photogrammetric methods from aerial photographs
Topography by planetable surveys 1936. Revised from
aerial photographs taken 1969. Field checked 1971
Selected hydrographic data compiled from USC&GS Chart 246 (1971)
This information is not intended for navigational purposes
Polyconic projection. 1927 North American datum
10,000-foot grid based on Massachusetts coordinate system,
mainland zone
1000-meter Universal Transverse Mercator grid,
zone 19
Red tint indicates areas in which only
landmark buildings are shown
There may be private inholdings within the boundaries of
the National or State reservations shown on this map



CONTOUR INTERVAL 10 FEET
NATIONAL GEODETIC VERTICAL DATUM OF 1929
DEPTH CURVES AND SOUNDINGS IN FEET-DATUM IS MEAN LOW WATER
THE RELATIONSHIP BETWEEN THE TWO DATUMS IS VARIABLE
SHORELINE SHOWN REPRESENTS THE APPROXIMATE LINE OF MEAN HIGH WATER
THE MEAN RANGE OF TIDE IS APPROXIMATELY 9.5 FEET

THIS MAP COMPLIES WITH NATIONAL MAP ACCURACY STANDARDS
FOR SALE BY U. S. GEOLOGICAL SURVEY, RESTON, VIRGINIA 22092
A FOLDER DESCRIBING TOPOGRAPHIC MAPS AND SYMBOLS IS AVAILABLE ON REQUEST



NATIONAL REGISTER NOMINATION

The Rockland Trust Company
288 Union Street
Rockland, MA

The Rockland Trust Co
288 Union Street
Rockland, MA

WEYMOUTH, MASS.
N4207 5—W7052 5/7.5
1971
PHOTOREVISED 1979
AMS 6886 III NW—SERIES V814



February 2, 1989

Carol Shull
National Register of Historic Places
Department of the Interior
National Park Service
P.O. Box 37127
Washington, DC 20013-7127

Dear Ms. Shull:

Enclosed you will find the following nomination forms:

The Rockland High School, Rockland, MA
The Rockland Trust Company, Rockland, MA
Lower Union Street, Historic District, Rockland, MA
The Phoenix Building, Rockland, MA
The Rockland Memorial Library, Rockland, MA
The Pond Hill School, Wellfleet, MA

All have been voted eligible by the State Review Board and have been signed by the State Historic Preservation Officer. Owners were notified of pending State Review Board consideration 30-75 days before the meeting and were afforded the opportunity to comment. Comments received to date are attached to the nomination forms.

Sincerely,

Betsy Friedberg
National Register Director
Massachusetts Historical Commission

Enclosure:

BF/di