

United States Department of the Interior
National Park Service

RECEIVED

FEB 15 1994

NATIONAL REGISTER

National Register of Historic Places
Registration Form

This form is for use in nominating or requesting determinations for individual properties and districts. See instructions in *How to Complete the National Register of Historic Places Registration Form* (National Register Bulletin 16A). Complete each item by marking "x" in the appropriate box or by entering the information requested. If an item does not apply to the property being documented, enter "N/A" for "not applicable." For functions, architectural classification, materials, and areas of significance, enter only categories and subcategories from the instructions. Place additional entries and narrative items on continuation sheets (NPS Form 10-900a). Use a typewriter, word processor, or computer, to complete all items.

1. Name of Property

historic name Evangeline Hotel

other names/site number _____

2. Location

street & number 302 Jefferson Street N/A not for publication

city or town Lafayette N/A vicinity

state Louisiana code LA county Lafayette code 055 zip code 70501

3. State/Federal Agency Certification

As the designated authority under the National Historic Preservation Act, as amended, I hereby certify that this nomination request for determination of eligibility meets the documentation standards for registering properties in the National Register of Historic Places and meets the procedural and professional requirements set forth in 36 CFR Part 60. In my opinion, the property meets does not meet the National Register criteria. I recommend that this property be considered significant nationally statewide locally. (See continuation sheet for additional comments.)

Gerri Hobdy 2/11/94
Signature of certifying official/Title Gerri Hobdy, LA Date
SHPO, Dept of Culture, Recreation and Tourism
State of Federal agency and bureau

In my opinion, the property meets does not meet the National Register criteria. (See continuation sheet for additional comments.)

Signature of certifying official/Title Date

State or Federal agency and bureau

4. National Park Service Certification

I hereby certify that the property is:

- entered in the National Register.
 See continuation sheet.
- determined eligible for the National Register
 See continuation sheet.
- determined not eligible for the National Register.
- removed from the National Register.
- other, (explain:)

Edson H. Beall Signature of the Keeper Date of Action 3/17/94
Entered in the National Register

Evangeline Hotel
Name of Property

Lafayette Parish, LA
County and State

5. Classification

Ownership of Property
(Check as many boxes as apply)

- private
- public-local
- public-State
- public-Federal

Category of Property
(Check only one box)

- building(s)
- district
- site
- structure
- object

Number of Resources within Property
(Do not include previously listed resources in the count.)

Contributing	Noncontributing	
1		buildings
		sites
		structures
		objects
1	0	Total

Name of related multiple property listing
(Enter "N/A" if property is not part of a multiple property listing.)

N/A

Number of contributing resources previously listed in the National Register

0

6. Function or Use

Historic Functions
(Enter categories from instructions)

DOMESTIC/hotel

Current Functions
(Enter categories from instructions)

VACANT/not in use

7. Description

Architectural Classification
(Enter categories from instructions)

Italian Renaissance

Materials
(Enter categories from instructions)

foundation concrete

walls brick

roof other: tar and gravel

other stucco; terra cotta

Narrative Description

(Describe the historic and current condition of the property on one or more continuation sheets.)

**United States Department of the Interior
National Park Service**

**National Register of Historic Places
Continuation Sheet**

Evangeline Hotel, Lafayette, Lafayette Parish, LA

Section number 7 Page 1

RECEIVED

FEB 15 1994

NATIONAL
REGISTER

The Evangeline Hotel (1928) is a large six story tan brick building with an original one story restaurant wing. Located on a corner in downtown Lafayette, the hotel's decorative motifs are mainly derived from Italian sources. Despite various alterations and additions, the building remains a landmark in the Lafayette CBD.

The Evangeline Hotel's styling is confined to the top floor, as was sometimes the case in tall buildings of the period. Specific Italian influenced features include low pitched gables, double arch windows with a roundel above, blind arcading and a central front window with an overall Mannerist character. These elements will be described in more detail below. In addition to its styling, the top floor (front and two sides) is set apart by its white stucco finish with brick accents.

The front of the top story features a low pitched central gable defined by pronounced blind arcading and quoins. (The quoins begin at the second story.) At the center is a prominent terra cotta window surround reminiscent of the Mannerist style. Its pediment is broken by an oversized rather florid cartouche with attached swags to each side. The sides are accented with quoin-like elements. Beneath the window is a false balcony with an arcade resting on consoles. A square head window set within a brick round arch surround is located to each side of the central composition. A rich, textured effect was created by laying the bricks within the round arches with their corners pointing outwards.

At each end of the side elevations is a two bay low pitched gabled section defined by quoins in the same manner as the front. Each culminates in a gable featuring pronounced blind arcading and a double arch window composition with a roundel above. The windows are the same as those on the front -- i.e., a square head window set within a brick round arch surround. The roundels feature the same brick treatment as the round arches, as previously described. The bays between the gabled sections feature blind arcading and square head windows with brick surrounds.

Alterations since construction:

(1) The hotel was enlarged by about a third. The date for this expansion is unknown; the 1940s is an educated guess. The addition is the same height as the original and is of similar brick. Although sensitively done, it clearly reads as an addition, largely because the top story is unadorned.

CONTINUED

**United States Department of the Interior
National Park Service**

**National Register of Historic Places
Continuation Sheet**

Evangeline Hotel, Lafayette, Lafayette Parish, LA

Section number 7 Page 2

(2) The exterior of the first story was completely redone in the late 1960s, when the hotel was remodeled for use as a state office building. The work on the ground story included covering almost all of the openings, plastering over the entire surface, adding a mansard roof to the restaurant wing, and attaching a mansard roof covered area to part of the main side elevation. However, historic photographs and a drawing survive to show the original appearance, which was basically fairly low key. The front featured a central round arch double door entrance with a single door to each side. Above each single door was a terra cotta decorative panel. To each side of this composition was a large plate glass window with a multi-paned transom. The restaurant wing is shown with two large plate glass windows at the center with a round arch entrance to each side. None of the foregoing is visible except for one round arch opening on the wing and the round arch opening on the hotel and the two decorative plaques. On the side elevation were a series of simple square head openings. It should be noted that the ground story will be restored to its original appearance as part of a slated tax certification project.

(3) The interior was also remodeled when the building was taken over by the state, including some floor plan changes and dropped celotex ceilings in most spaces. Surviving features on the ground level include a paneled wainscot in the lobby (now subdivided) and an entrance hallway which features a plain vaulted ceiling, an arched opening to the lobby and a paneled wainscot. Also, some guest rooms retain their original louvered doors.

(4) A one story plastered rear addition was added as part of the state's remodeling project.

Assessment of Integrity:

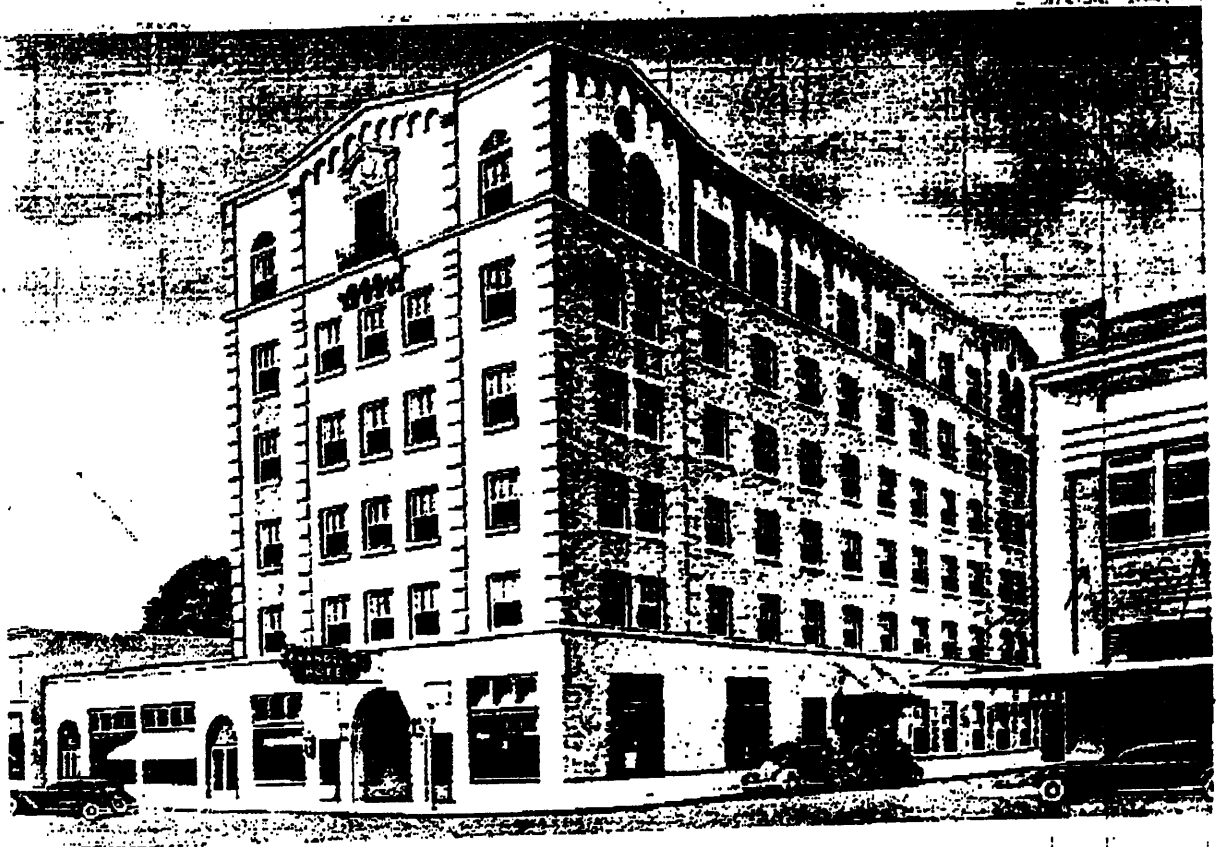
Although numerous, the above alterations have not impacted the hotel's Italian architectural character, which was confined to the top story. While the reworked ground story is visually jarring and out of character, it should be noted that the original design was not a stylistic statement. In short, while the modifications are most regrettable, at least no major stylistic features were lost. Because the hotel's articulated top story survives intact, the building is a landmark in the much depleted and altered Lafayette CBD.

United States Department of the Interior
National Park Service

National Register of Historic Places Continuation Sheet

Evangeline Hotel, Lafayette Parish, LA

Section number 7 Page 3



Old Postcard View Showing Original Appearance of Ground Story

Evangeline Hotel
Name of Property

Lafayette Parish, LA
County and State

8. Statement of Significance

Applicable National Register Criteria

(Mark "x" in one or more boxes for the criteria qualifying the property for National Register listing.)

- A** Property is associated with events that have made a significant contribution to the broad patterns of our history.
- B** Property is associated with the lives of persons significant in our past.
- C** Property embodies the distinctive characteristics of a type, period, or method of construction or represents the work of a master, or possesses high artistic values, or represents a significant and distinguishable entity whose components lack individual distinction.
- D** Property has yielded, or is likely to yield, information important in prehistory or history.

Criteria Considerations

N/A

(Mark "x" in all the boxes that apply.)

Property is:

- A** owned by a religious institution or used for religious purposes.
- B** removed from its original location.
- C** a birthplace or grave.
- D** a cemetery.
- E** a reconstructed building, object, or structure.
- F** a commemorative property.
- G** less than 50 years of age or achieved significance within the past 50 years.

Narrative Statement of Significance

(Explain the significance of the property on one or more continuation sheets.)

9. Major Bibliographical References

Bibliography

(Cite the books, articles, and other sources used in preparing this form on one or more continuation sheets.)

Previous documentation on file (NPS): N/A

- preliminary determination of individual listing (36 CFR 67) has been requested
- previously listed in the National Register
- previously determined eligible by the National Register
- designated a National Historic Landmark
- recorded by Historic American Buildings Survey # _____
- recorded by Historic American Engineering Record # _____

Areas of Significance

(Enter categories from instructions)

architecture

Period of Significance

1928

Significant Dates

1928

Significant Person

(Complete if Criterion B is marked above)

N/A

Cultural Affiliation

N/A

Architect/Builder

unknown

Primary location of additional data:

- State Historic Preservation Office
- Other State agency
- Federal agency
- Local government
- University
- Other

Name of repository:

Evangeline Hotel
Name of Property

Lafayette Parish, LA
County and State

10. Geographical Data

Acreage of Property .5977 acre

UTM References

(Place additional UTM references on a continuation sheet.)

1

1	5
---	---

5	9	4	6	2	0
---	---	---	---	---	---

3	3	4	4	1	8	0
---	---	---	---	---	---	---

Zone

Easting

Northing

2

--	--

--	--	--	--	--	--

--	--	--	--	--	--	--

3

--	--

--	--	--	--	--	--

--	--	--	--	--	--	--

Zone

Easting

Northing

4

--	--

--	--	--	--	--	--

--	--	--	--	--	--	--

See continuation sheet

Verbal Boundary Description

(Describe the boundaries of the property on a continuation sheet.)

Boundary Justification Boundaries follow property lines.

(Explain why the boundaries were selected on a continuation sheet.)

11. Form Prepared By

name/title National Register staff

organization Division of Historic Preservation date January 1994

street & number P. O. Box 44247 telephone (504) 342-8160

city or town Baton Rouge state Louisiana zip code 70804

Additional Documentation

Submit the following items with the completed form:

Continuation Sheets

Maps

A **USGS map** (7.5 or 15 minute series) indicating the property's location.

A **Sketch map** for historic districts and properties having large acreage or numerous resources.

Photographs

Representative **black and white photographs** of the property.

Additional items

(Check with the SHPO or FPO for any additional items)

Property Owner

(Complete this item at the request of SHPO or FPO.)

name Historic Restoration, Inc.

street & number 400 Lafayette St., Suite 110 telephone (504) 566-0204

city or town New Orleans state Louisiana zip code 70130

Paperwork Reduction Act Statement: This information is being collected for applications to the National Register of Historic Places to nominate properties for listing or determine eligibility for listing, to list properties, and to amend existing listings. Response to this request is required to obtain a benefit in accordance with the National Historic Preservation Act, as amended (16 U.S.C. 470 *et seq.*).

Estimated Burden Statement: Public reporting burden for this form is estimated to average 18.1 hours per response including time for reviewing instructions, gathering and maintaining data, and completing and reviewing the form. Direct comments regarding this burden estimate or any aspect of this form to the Chief, Administrative Services Division, National Park Service, P.O. Box 37127, Washington, DC 20013-7127; and the Office of Management and Budget, Paperwork Reductions Projects (1024-0018), Washington, DC 20503.

**United States Department of the Interior
National Park Service**

**National Register of Historic Places
Continuation Sheet**

Evangeline Hotel, Lafayette, Lafayette Parish, LA

Section number 8 Page 1

The Evangeline Hotel is locally significant in the area of architecture as one of very few landmarks remaining in downtown Lafayette.

The Lafayette central business district contains about 50 or so 50+ year old buildings, all of which fall within the c.1900 to c.1935 period. Virtually all of these are either unstyled buildings or severely altered older buildings. In addition, due largely to booming oil-generated prosperity in the modern era, there are a large number of modern buildings where historic buildings once stood. This prosperity, of course, also contributed to the modernization of historic buildings. Because downtown Lafayette's historic building stock has been so greatly depleted and altered, a major styled building such as the Evangeline Hotel is a landmark even to the casual observer. In fact, it is one of only about three or four buildings in the downtown which can claim to represent a specific style of architecture. Although confined to the top story, its Italian styling is nonetheless quite pronounced, including low pitched gables, double arch windows with a roundel above, blind arcading and a terra cotta window surround in the Mannerist style accented with an arcaded "balcony" resting on consoles. The hotel's landmark status is enhanced by the fact that it is one of only two historic buildings in the CBD over two stories high. As one approaches the downtown, the building is quite prominent because of its six story height and distinctive top story. All in all, it makes quite a statement within the context of downtown Lafayette.

**United States Department of the Interior
National Park Service**

**National Register of Historic Places
Continuation Sheet**

Evangeline Hotel, Lafayette, Lafayette Parish, LA

Section number 9 Page 1

Bibliography

Historic postcard, photographs, and front elevation drawing of Evangeline Hotel, copies in Register file, Division of Historic Preservation.

Historical Sites Inventory, Lafayette Parish, Section II. Because this volume covers only buildings constructed before 1920, it was augmented with a windshield survey conducted by Division of Historic Preservation staff.

**United States Department of the Interior
National Park Service**

**National Register of Historic Places
Continuation Sheet**

Evangeline Hotel, Lafayette, Lafayette Parish, LA

Section number 10 Page 1

Legal Property Description

Begin at that point where the westerly line of Vine Street and northerly line of Jefferson Street intersect, and from said point run in a westerly direction South 64 degrees 55 minutes west along Jefferson Street the distance of 96.5 feet; then turn to the right and run North 25 degrees 29 minutes 20 seconds West the distance of 138.3 feet; then turn to the right and run North 64 degrees 55 minutes East the distance of 6.9 feet; then turn to the left and run North 25 degrees 05 minutes West the distance of 140.2 feet to West Third Street; then turn to the right and run North 64 degrees 55 minutes East along West Third Street, 90.5 feet in the direction of and to Vine Street; then turn to the right and run South 25 degrees 05 minutes East along Vine Street 278.5 feet in the direction of and to Jefferson Street and the point of beginning.