

PAER # PR12 - 1



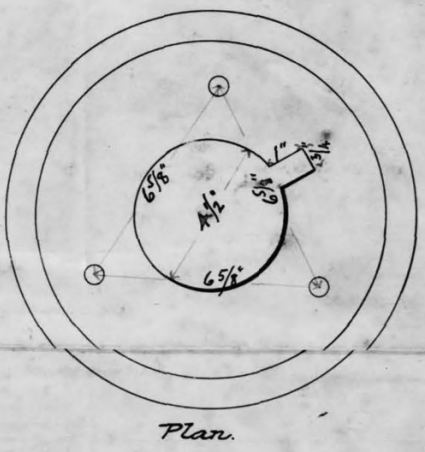
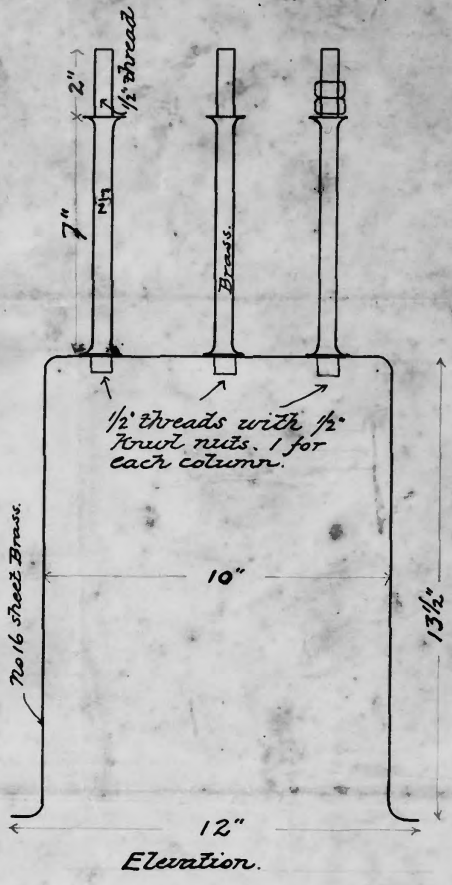
Isla de "Culebritas".

94

"Culebrita" Island.



2. 1/2" Knurl nuts for each column.



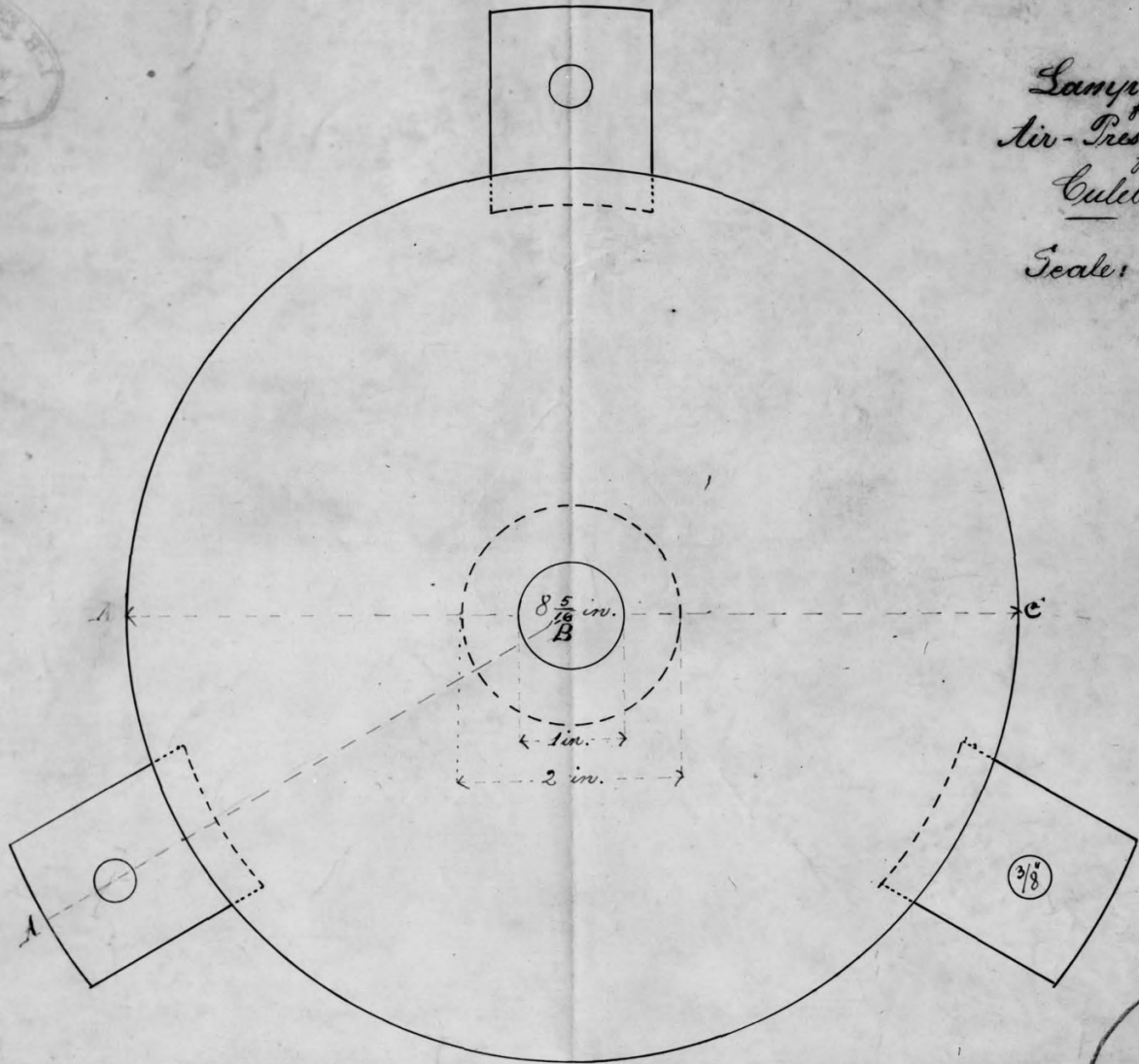
Scale - 1/4 size.

Lamp Pedestal
Columns
Culebrita L.E. Sta.

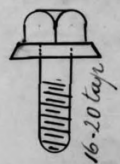
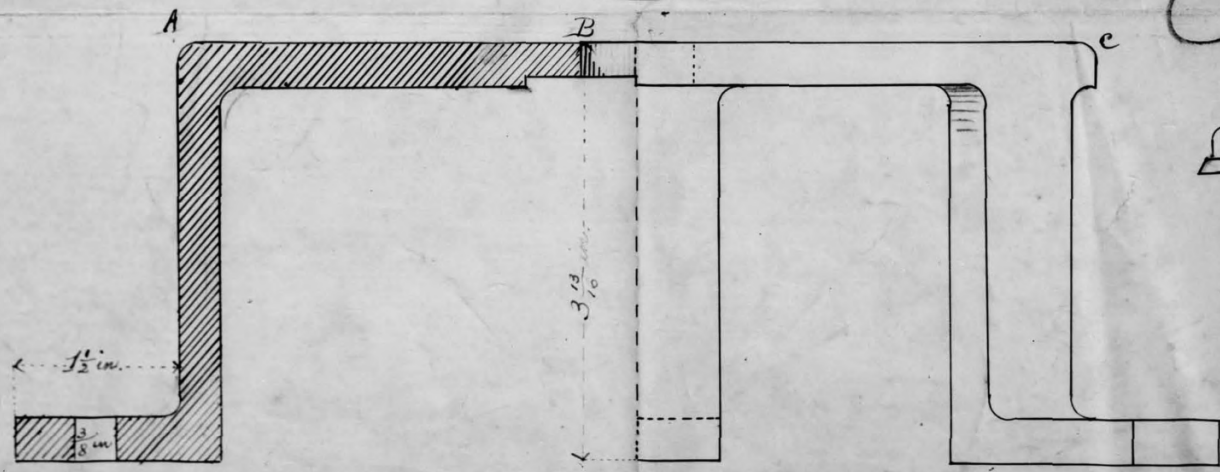
Light-House Establishment,
Office of Assistant to the Engineer,
Third District,
San Juan, Porto Rico.



Lamp-stand
for
Air-Pressure-Lamp
for
Culebrita St Sea
Scale: Full size.
J. Nether.



63



Folio Perla. 1168.
Drawer... 18...
No... 7679

Sectional Elevation
on line ABC.



HAER # PR 12-4



APR # 08 12 - 5



HAE R # PR 12 - 6



APER # PR 12-7



MAER # 102 12-8



HER #PR/2-9



FILE # PR12-10



PHEN #22-11



HAEP #PP-12-12



1-10-13

HAER
PR
33-FRAT
1-

HISTORIC AMERICAN ENGINEERING RECORD

Index to Photographs

Faro Isla de Culebrita (Isla Culebrita Light)
Summit of southern part of Culebrita Island
Fraile (barrio)
Culebra
Puerto Rico

HAER No. PR-12

Photographer: Luis Morales, August 1978

- PR-12-1 Photocopy of book illustration, undated ca. 1895, from Album de Puerto Rico
- PR-12-2 Photocopy of measured drawing, ca. 1901, showing components of lighthouse lamp
- PR-12-3 Photocopy of measured drawing, ca. 1901. Component of lamp in plan and in section
- PR-12-4 Aerial view looking south, showing overview of site
- PR-12-5 Aerial view looking southwest, showing rear of lighthouse
- PR-12-6 Aerial view looking south
- PR-12-7 Aerial view looking south
- PR-12-8 Aerial view looking southwest
- PR-12-9 Aerial view looking west
- PR-12-10 Aerial view looking southwest, close-up
- PR-12-11 Aerial view looking south
- PR-12-12 Close-up aerial view looking south
- PR-12-13 Detail view looking south, showing light tower