



Johnson Creek Covered Bridge
Alhambra, Robertson County, Ky.
Kentucky Covered Bridge Association.
Date unknown.

Photo 1, View of side and portal
of bridge.

MAY 10 1976

SEP 27 1976



MAY 10 1976

Johnson Creek Covered Bridge

Alhambra, Robertson County, Ky.

Kentucky Covered Bridge Association

1971. Photo 2, Interior showing
Robert Smith's truss and arch.

SEP 27 1976

(MOUNT OLIVET)

UNITED STATES
DEPARTMENT OF THE INTERIOR
GEOLOGICAL SURVEY

Johnson Creek Covered Bridge
Alhambra, Robertson County, Ky.
USGS Map, 7.5 Minute Series,
Cowan Quadrangle, 1:24000, 1952

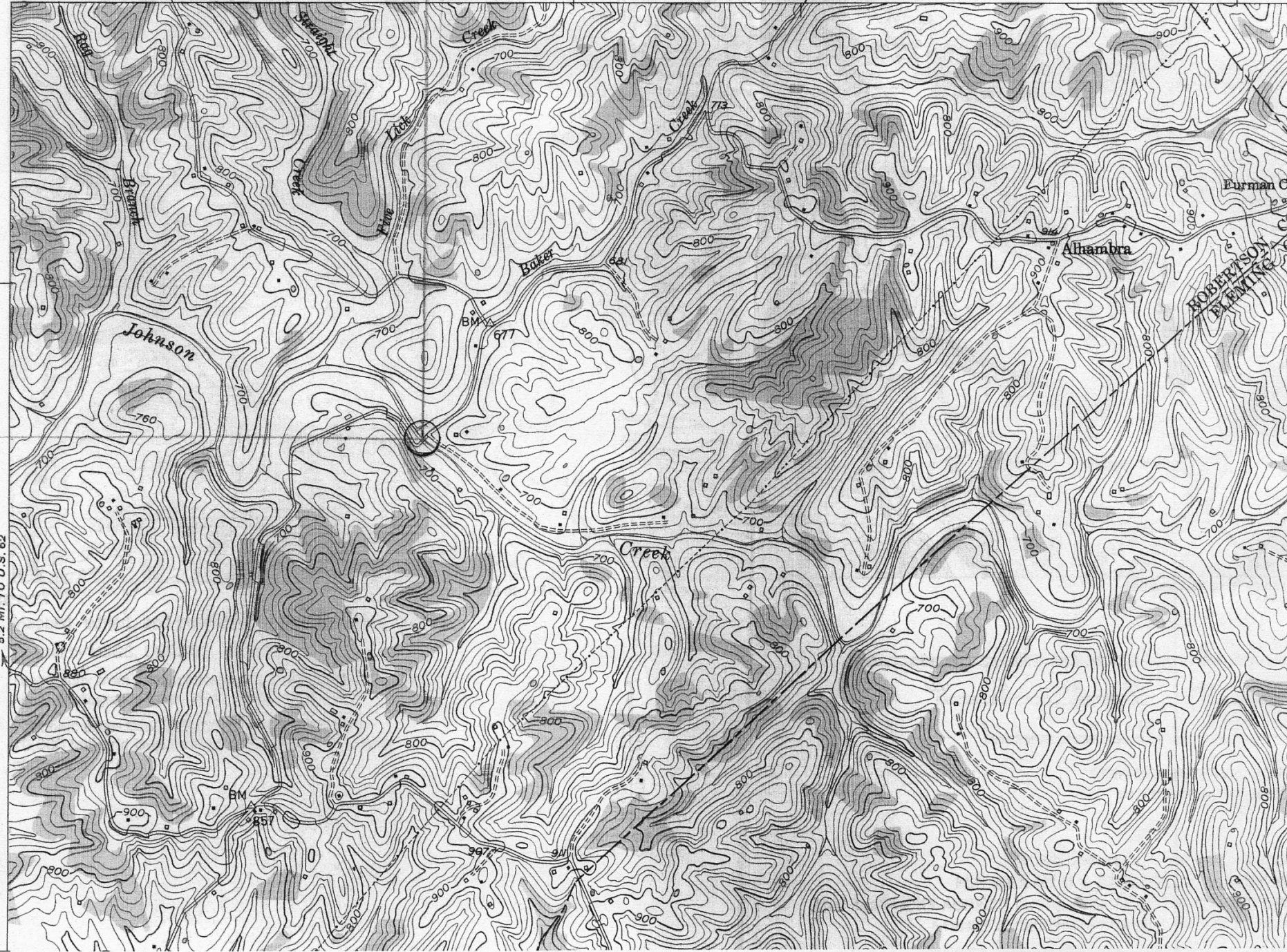
STATE OF KENTUCKY
AGRICULTURAL AND INDUSTRIAL DEVELOPMENT

Deg. Min. Sec.
83° 0' 58" 37.19"
38° 0' 28" 51.5"
Longitude
Latitude

84°00'
38°30'

57°30' 2.6 MI. TO U.S. 62

(SARDIS)



5.2 MI. TO U.S. 62