



- 1) San Joaquin Light & Power Corporation Building
- 2) Fresno County, California
- 3) Christeen Taniguchi
- 4) July 13, 2005
- 5) Applied Earth Works  
5090 N. Fruit Avenue, suite 101  
Fresno, CA 93711-3064
- 6) View looking north at the southeast principal elevation and southwest elevation
- 7) #1



**EDDIE MONEY & COLIN HAY**  
FROM MEN AT WORK  
THURS JULY 21 @ 8 PM

BEDROOM  
EVERY  
SAT

1) San Joaquin Light & Power Corporation Building

2) Fresno County, California

3) Christeen Taniguchi

4) July 14, 2005

5) Applied Earth Works

5090 N. Fruit Avenue, suite 101

Fresno, CA 93711-3064

6) View looking west at the northeast elevation  
with the Warner's Theatre in the foreground.

7) #2



- 1) San Joaquin Light & Power Corporation Building
- 2) Fresno County, California
- 3) Christeen Taniguchi
- 4) July 13, 2005
- 5) Applied Earthworks  
5090 N. Fruit Avenue, suite 101  
Fresno, CA 93711-3064
- 6) View looking east at the southwest and northwest elevations
- 7) # 3



- 1) San Joaquin Light & Power Corporation Building
- 2) Fresno County, California
- 3) Christeen Taniguchi
- 4) July 13, 2005
- 5) Applied Earth Works  
5090 N. Fruit Avenue, suite 101  
Fresno, CA 93711 - 3064
- 6) View looking southwest at the bottom section  
of the northeast principal elevation
- 7) #4





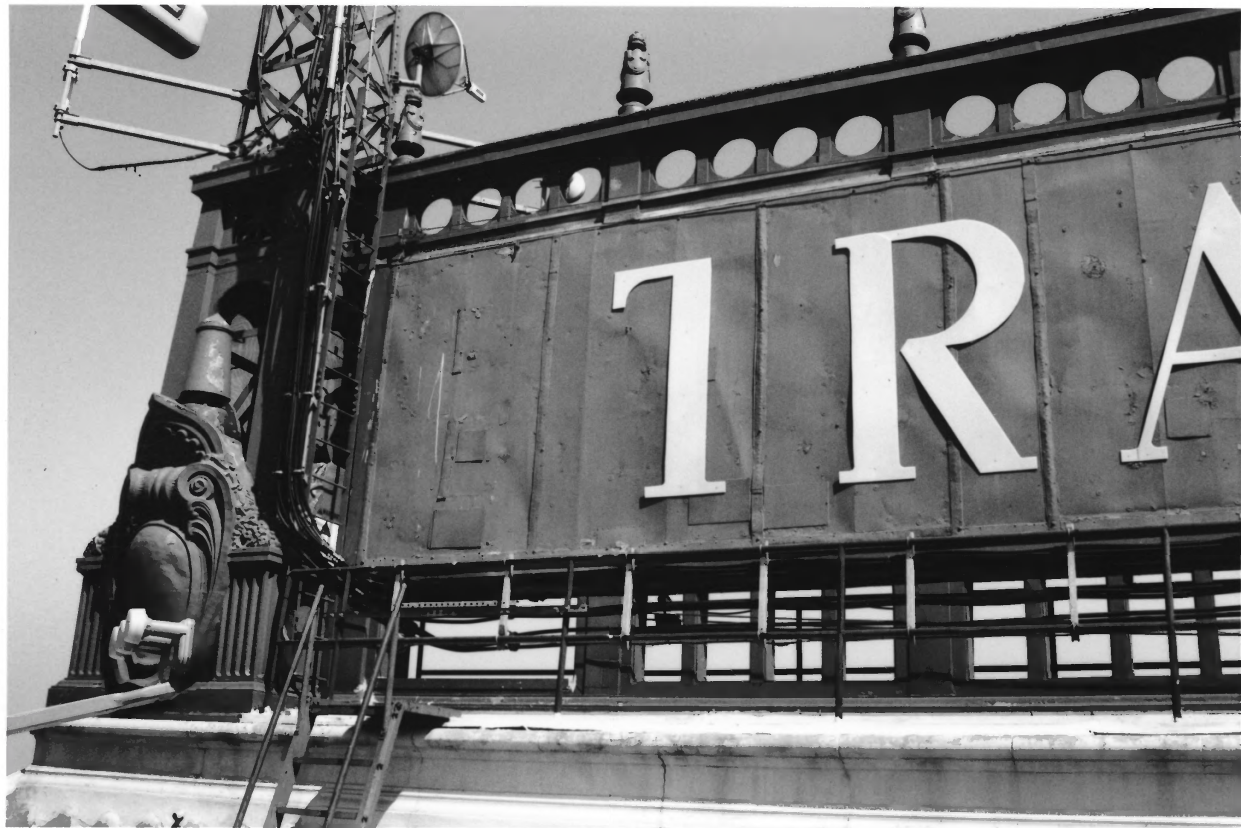
ROBI  
LEASING  
AVA  
(209) 2

115 1st Floor Center  
1000 S. Main St.  
200

- 1) San Joaquin Light + Power Corporation Building
- 2) Fresno County, California
- 3) Christeen Taniguchi
- 4) July 13, 2005
- 5) Applied Earth Works  
5090 N. Fruit Avenue, suite 101  
Fresno, CA 93711 - 3064
- 6) View looking north at the entrance located at the southwest end of the southeast principal elevation
- 7) #5



- 1) San Joaquin Light + Power Corporation Building
- 2) Fresno County, California
- 3) Christeen Taniguchi
- 4) July 13, 2005
- 5) Applied Earth Works  
5090 N. Fruit Avenue, suite 101  
Fresno, CA 93711-3064
- 6) view looking southwest at details above the entrance located at the northwest end of the north east principal elevation
- 7) #6



- 1) San Joaquin Light & Power Corporation Building
- 2) Fresno County, California
- 3) Christeen Taniguchi
- 4) July 14, 2005
- 5) Applied Earth Works  
5090 N. Fruit Avenue, suite 101  
Fresno, CA 93711-3064
- 6) view looking northwest at the southwest  
end of the roof signage.
- 7) # 7



- 1) San Joaquin Light + Power Corporation Building
- 2) Fresno County, California
- 3) Christeen Taniguchi
- 4) July 14, 2005
- 5) Applied Earth Works  
5090 N. Fruit Avenue, suite 101  
Fresno, CA 93711-3064
- 6) view looking southwest at the lobby
- 7) #8





1) San Joaquin Light + Power Corporation Building

2) Fresno County, California

3) Christeen Taniguchi

4) July 13, 2005

5) Applied Earth Works

5090 N. Fruit Avenue, suite 101

Fresno, CA 93711-3064

6) view looking west at the display room

7) #9



1) San Joaquin Light + Power Corporation Building

2) Fresno County, California

3) Christeen Taniguchi

4) July 13, 2005

5) Applied Earth Works

5090 N. Fruit Avenue, suite 101

Fresno, CA 93711-3064

6) View looking east at the entrance of  
the display room leading to the street level.

7) #10



- 1) San Joaquin Light & Power Corporation Building
- 2) Fresno County, California
- 3) Christeen Taniguchi
- 4) July 13, 2005
- 5) Applied Earth Works  
5090 N. Fruit Avenue, suite 101  
Fresno, CA 93711-3064
- 6) View looking west at the stairs leading to  
the mezzanine level of the display room.
- 7) #11



1) San Joaquin Light + Power Corporation Building

2) Fresno County, California

3) Christeen Taniguchi

4) July 14, 2005

5) Applied Earth Works

5090 N. Fruit Avenue, suite 101

Fresno, CA 93711-3064

6) view looking south at the third floor  
office space.

7) #12





- 1) San Joaquin Light & Power Corporation Building
- 2) Fresno County, California
- 3) Christeen Taniguchi
- 4) July 14, 2005
- 5) Applied Earth Works  
5090 N. Fruit Avenue, suite 101  
Fresno, CA 93711-3064
- 6) view looking southwest at the stage of  
the auditorium.
- 7) #13



- 1) San Joaquin Light & Power Corporation Building
- 2) Fresno County, California
- 3) Christeen Taniguchi
- 4) July 14, 2005
- 5) Applied Earth Works  
5090 N. Fruit Avenue, suite 101  
Fresno, CA 93711-3064
- 6) Detailed view looking southwest at a plaster shield with "S.J.P."
- 7) #14



- 1) San Joaquin Light + Power Corporation Building
- 2) Fresno County, California
- 3) Christeen Taniguchi
- 4) July 14, 2005
- 5) Applied Earth Works  
5090 N. Fruit Avenue, Suite 101  
Fresno, CA 93711-3064
- 6) Detailed view looking southwest at a plaster medallion with a transmission tower.
- 7) #15



Light and Power Building  
104  
Fresno, Cal.

- 1) San Joaquin Light + Power Corporation Building
- 2) Fresno County, California
- 3) Christeen Taniguchi
- 4) circa 1924
- 5) Applied Earth Works  
5090 N. Fruit Avenue, suite 101  
Fresno, CA 93711-3064
- 6) Historic view looking west at the two principal elevations facing southeast and northeast.
- 7) #16

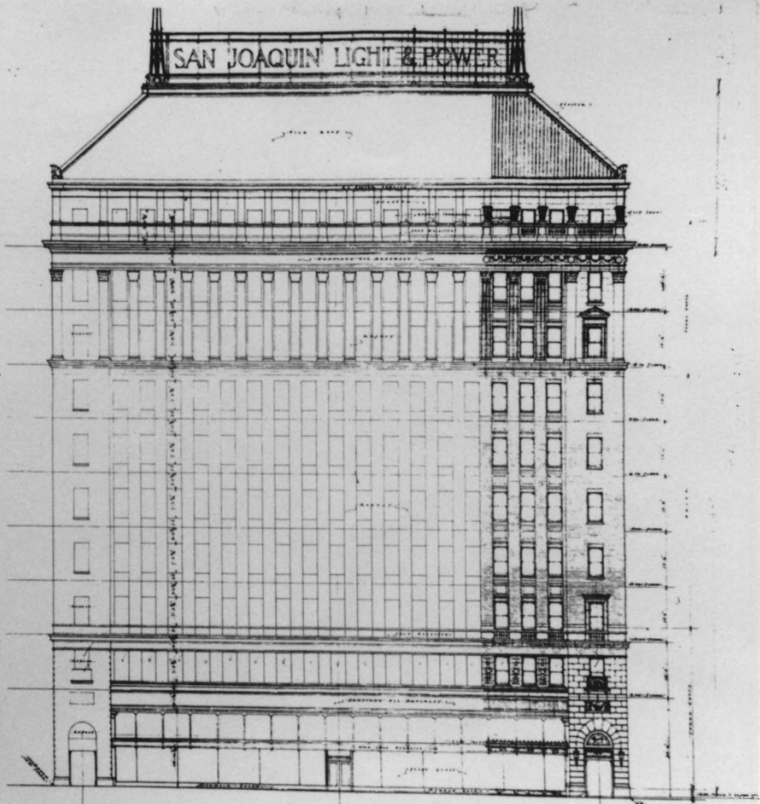




Fulton St. View Fresno, Cal.

400

- 1) San Joaquin Light + Power Corporation Building
- 2) Fresno County, California
- 3) Christeen Taniguchi
- 4) circa 1924
- 5) Applied Earth Works  
5090 N. Fruit Avenue, suite 101  
Fresno, CA 93711-3064
- 6) Historic view looking northwest along Fulton street  
(today Fulton mall)
- 7) #17



5-10-13  
 5-13

TOWNSHIP ST. ELEVATION

10

SAN JOAQUIN LIGHT & POWER CORPORATION

THE S. J. FELICOLI CO.  
 ARCHITECTS-ENGINEERS-BUILDERS  
 200 BROADWAY, NEW YORK, N. Y.

1) San Joaquin Light + Power Corporation Building

2) Fresno County, California

3) Christeen Taniguchi

4) January, 1923

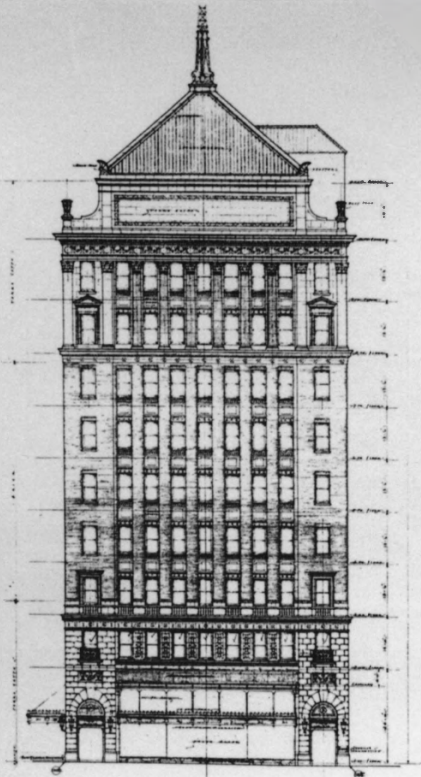
5) Applied Earth Works

5090 N. Fruit Avenue, suite 101

Fresno, CA 93711-3064

6) Southeast principal elevation original drawing  
by R.F. Felchlin + Co.

7) #18



SECTION ELEVATION

SAN JOAQUIN LIGHT & POWER CORPORATION  
 FRESNO CALIFORNIA

THE R. F. FELLER CO.  
 REGISTERED ENGINEERS ARCHITECTS  
 SAN FRANCISCO CALIF.

32

- 1) San Joaquin Light + Power Corporation Building
- 2) Fresno County, California
- 3) Christeen Taniguchi
- 4) January, 1923
- 5) Applied Earth Works  
5090 N. Fruit Avenue, suite 101  
Fresno, CA 93711-3064
- 6) Northeast principal elevation original drawing  
by R.F. Felchlin + Co.
- 7) #19



1) San Joaquin Light + Power Corporation Building  
(image of Bank of Italy Building - 1001 Fulton Mall)

2) Fresno County, California

3) Christeen Taniguchi

4) July 14, 2005

5) Applied Earth Works

5090 N. Fruit Avenue, suite 101

Fresno, CA 93711-3064

6) view looking west at the facade and  
southeast elevation.

7) # 20





1) San Joaquin Light + Power Corporation Building  
(image of Hotel Californian - 851 Van Ness Avenue)

2) Fresno County, California

3) Christeen Taniguchi

4) July 14, 2005

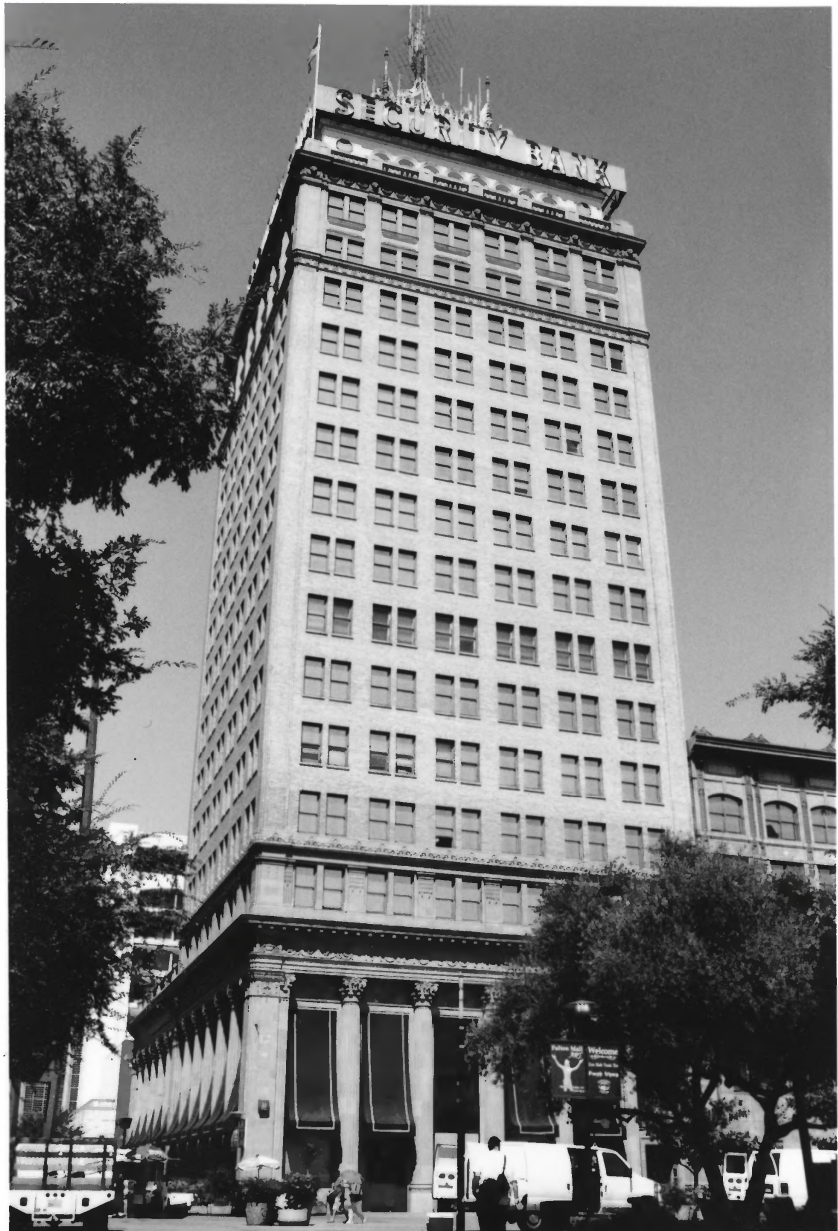
5) Applied Earth Works

5090 N. Fruit Avenue, suite 101

Fresno, CA 93711-3064

6) view looking south at the façade and  
northeast elevation

7) #21



- 1) San Joaquin Light + Power Corporation Building  
(image of Pacific Southwest Building - 1060 Fulton Mall)
- 2) Fresno County, California
- 3) Christeen Taniguchi
- 4) July 14, 2005
- 5) Applied Earth Works  
5090 N. Fruit Avenue, suite 101  
Fresno, CA 93711-3064
- 6) view looking east at the façade
- 7) #22



- 1) San Joaquin Light + Power Corporation Building  
(image of Radin-Kamp Dept. store - 959 Fulton Mall)
- 2) Fresno County, California
- 3) Christeen Taniguchi
- 4) July 14, 2005
- 5) Applied Earth Works  
5090 N. Fruit Avenue, suite 101  
Fresno, CA 93711-3064
- 6) view looking south at the northwest and  
northeast elevations
- 7) # 23



1) San Joaquin Light + Power Corporation Building  
(image of T.W. Patterson Building - 2614 Tulare Street)

2) Fresno County, California

3) Christeen Taniguchi

4) July 14, 2005

5) Applied Earth Works

5090 N. Fruit Avenue, suite 101

Fresno, CA 93711-3064

6) view looking east at the northwest facing  
elevation.

7) #24