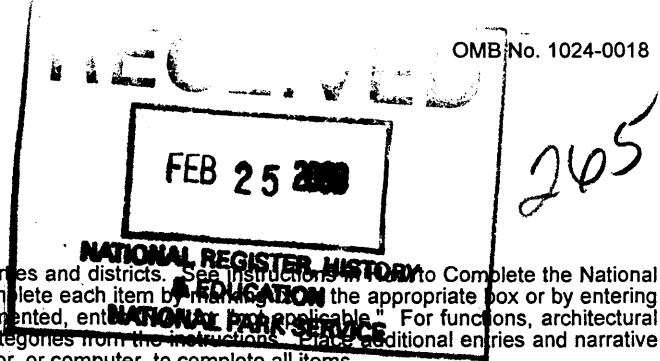


United States Department of the Interior
National Park Service

NATIONAL REGISTER OF HISTORIC PLACES
REGISTRATION FORM



This form is for use in nominating or requesting determinations for individual properties and districts. See instructions on the back of the form. Complete the National Register of Historic Places Registration Form (National Register Bulletin 16A). Complete each item by entering the appropriate box or by entering the information requested. If any item does not apply to the property being documented, enter "N/A" in the appropriate box. For functions, architectural classification, materials, and areas of significance, enter only categories and subcategories from the instructions. Place additional entries and narrative items on continuation sheets (NPS Form 10-900a). Use a typewriter, word processor, or computer, to complete all items.

1. Name of Property

historic name LAKE OF THE HILLS COMMUNITY CLUB

other names/site number _____

2. Location

street & number 41 East Starr Avenue N/A not for publication

city or town Lake Wales N/A vicinity

state FLORIDA code FL county Polk code 105 zip code 33853

3. State/Federal Agency Certification

As the designated authority under the National Historic Preservation Act, as amended, I hereby certify that this nomination request for determination of eligibility meets the documentation standards for registering properties in the National Register of Historic Places and meets the procedural and professional requirements set forth in 36 CFR Part 60. In my opinion, the property meets does not meet the National Register criteria. I recommend that this property be considered significant nationally statewide locally. (See continuation sheet for additional comments.)

Janet Snyder Matthews 2/16/2000
Signature of certifying official/Title Date

Florida State Historic Preservation Officer, Division of Historical Resources
State or Federal agency and bureau

In my opinion, the property meets does not meet the National Register criteria. (See continuation sheet for additional comments.)

Signature of certifying official/Title Date

State or Federal agency and bureau

4. National Park Service Certification

I hereby certify that the property is:

- entered in the National Register See continuation sheet
- determined eligible for the National Register See continuation sheet.
- determined not eligible for the National Register See continuation sheet.
- removed from the National Register.
- other, (explain) _____

Edson H. Beall 3/24/00
Signature of the Keeper Date of Action

5. Classification

Ownership of Property
(Check as many boxes as apply)

- private
- public-local
- public-State
- public-Federal

Category of Property
(Check only one box)

- buildings
- district
- site
- structure
- object

Number of Resources within Property
(Do not include any previously listed resources in the count)

Contributing	Noncontributing	
1	0	buildings
0	0	sites
0	0	structures
0	1	objects
1	1	total

Name of related multiple property listings
(Enter "N/A" if property is not part of a multiple property listing.)

Number of contributing resources previously listed in the National Register

"N/A"

0

6. Function or Use

Historic Functions
(Enter categories from instructions)

SOCIAL: meeting hall

Current Functions
(Enter categories from instructions)

SOCIAL: meeting hall

7. Description

Architectural Classification
(Enter categories from instructions)

Mediterranean Revival

Materials
(Enter categories from instructions)

foundation STUCCO
walls STUCCO
roof ASPHALT
other _____

Narrative Description

(Describe the historic and current condition of the property on one or more continuation sheets.)

8. Statement of Significance

Applicable National Register Criteria

(Mark "x" in one or more boxes for the criteria qualifying the property for National Register listing.)

- A** Property is associated with events that have made a significant contribution to the broad patterns of our history.
- B** Property is associated with the lives of persons significant in our past.
- C** Property embodies the distinctive characteristics of a type, period, or method of construction or represents the work of a master, or possesses high artistic values, or represents a significant and distinguishable entity whose components lack individual distinction.
- D** Property has yielded, or is likely to yield information important in prehistory or history.

Criteria Considerations

(Mark "x" in all the boxes that apply.)

Property is:

- A** owned by a religious institution or used for religious purposes.
- B** removed from its original location.
- C** a birthplace or grave.
- D** a cemetery.
- E** a reconstructed building, object, or structure.
- F** a commemorative property.
- G** less than 50 years of age or achieved significance within the past 50 years

Narrative Statement of Significance

(Explain the significance of the property on one or more continuation sheets.)

9. Major Bibliographical References

Bibliography

Cite the books, articles, and other sources used in preparing this form on one or more continuation sheets.)

Previous documentation on file (NPS):

- preliminary determination of individual listing (36 CFR 36) has been requested
- previously listed in the National Register
- previously determined eligible by the National Register
- designated a National Historic Landmark
- recorded by Historic American Buildings Survey

- recorded by Historic American Engineering Record

Areas of Significance

(Enter categories from instructions)

SOCIAL HISTORY

Period of Significance

1929-1950

Significant Dates

1929

Significant Person

N/A

Cultural Affiliation

N/A

Architect/Builder

Haines, Dr. D.A.

Bartholomew, Lon

Primary location of additional data:

- State Historic Preservation Office
- Other State Agency
- Federal agency
- Local government
- University
- Other

Name of Repository

10. Geographical Data

Acreeage of Property less than 1 acre

UTM References

(Place additional references on a continuation sheet.)

1	1	7	4	4	1	6	6	0	3	0	9	2	2	2	0
	Zone	Easting	Northing												
2															

3															
	Zone	Easting	Northing												
4															

See continuation sheet

Verbal Boundary Description

(Describe the boundaries of the property on a continuation sheet.)

Boundary Justification

(Explain why the boundaries were selected on a continuation sheet.)

11. Form Prepared By

name/title Heather H. I. McKinley/Robert O. Jones, Historic Sites Specialist

organization Bureau of Historic Preservation date _____

street & number R.A. Gray Building, 500 S. Bronough Street telephone (850) 487-2333

city or town Tallahassee state Florida zip code 32399-0250

Additional Documentation

Submit the following items with the completed form:

Continuation Sheets

Maps

- A **USGS map** (7.5 or 15 minute series) indicating the property's location.
- A **Sketch map** for historic districts and properties having large acreage or numerous resources.

Photographs

Representative **black and white photographs** of the property.

Additional items

(check with the SHPO or FPO for any additional items)

Property Owner

(Complete this item at the request of SHPO or FPO.)

name Trustees of Lake of the Hills Community Club, Inc.

street & number 41 E. Starr Ave. telephone _____

city or town Lake Wales state FL zip code 33853

Paperwork Reduction Act Statement: This information is being collected for applications to the National Register of Historic Places to nominate properties for listing or determine eligibility for listing, to list properties, and amend listings. Response to this request is required to obtain a benefit in accordance with the National Historic Preservation Act, as amended (16 U.S.C. 470 et seq.).

Estimated Burden Statement: Public reporting burden for this form is estimated to average 18.1 hours per response including time for reviewing instructions, gathering and maintaining data, and completing and reviewing the form. Direct comments regarding this burden estimate or any aspect of this form to the Chief, Administrative Services Division, National Park Service, P.O. Box 37127, Washington, DC 20013-7127; and the Office of Management and Budget, Paperwork Reductions Projects (1024-0018), Washington, DC 20503.

United States Department of the Interior
National Park Service

NATIONAL REGISTER OF HISTORIC PLACES
CONTINUATION SHEET

Section number 7 Page 1

LAKE OF THE HILLS COMMUNITY CLUB,
LAKE WALES, POLK CO., FLORIDA

SUMMARY

The Lake of the Hills Community Club is at 47 East Starr Avenue, Lake Wales, Polk County, Florida. The club is a one-story stucco building, constructed in 1929, is located on one acre of property, and is adjacent to Lake Starr. The property contains a circular drive and a large lime rock with bronze plaque.

SETTING

The clubhouse is located on a property that slopes towards Lake Starr to the east (Photos #1&2). The area was heavily wooded with pines on the high ground and scrub oaks closer to the waterfront. Over the years the stands of pine and oak have decreased in number and density. A short East Starr Avenue runs due east to the club from State Road 27 (Photo #3). The north/south Highway 27 is a major thoroughfare through Polk County. The restaurant and lodge, Chalet Suzanne (NR 1990), is on the highest property, ½ mile west. The private community of Mountain Lake Estates Historic District (NR 1993), is ½ mile due south. Boc Mountain Sanctuary and Singing Tower (NR 1972), is two miles to the southeast

PHYSICAL DESCRIPTION

The clubhouse is a one-story, stucco over frame building with a rectangular footprint. The construction is off-grade, and the gable roof with parapets is surfaced with asphalt shingles. Fenestration is 6/3, double-hung wooden sashes.

The main (west) façade has a centrally located gable portico with arched openings on the three sides (Photo #4). It is approached by a curved sidewalk; there are no steps. The single wooden door has 9 lights within the upper half. Paired windows flank the porch. There is a sculpted parapet, and a sign reading "Lake of the Hills Community Club Inc." above the porch.

The south elevation has three pairs of windows evenly spaced within the wall (Photo #5). Three small ventilator openings are in the sub-floor crawlspace. Exposed rafter ends are along the eaves.

The east elevation fronts on the lake, and has stucco on the sub-floor level with a door and two ventilator openings (Photo #6). The remainder of the elevation has asbestos shingle exterior, three pairs of windows, and a sculpted parapet like the one on the main façade.

The north elevation has a single door towards the west corner, with a small concrete porch with five steps (Photo #7). Three ventilator openings are at the sub-floor level. To the west of the door are a pair of windows, and a single small window. A single window, a pair of small windows, and a single small window, are east of the door.

The interior has wooden floors, plaster walls, and an acoustic tile ceiling (Photo #8). The interior is a large assembly room with a kitchen along the north wall, separated by an arched divider (Photos #9&10). Small men's and women's toilet rooms are at the east and west corners.

**United States Department of the Interior
National Park Service**

**NATIONAL REGISTER OF HISTORIC PLACES
CONTINUATION SHEET**

Section number 7 Page 2 **LAKE OF THE HILLS COMMUNITY CLUB,
LAKE WALES, POLK CO., FLORIDA**

ALTERATIONS

There have been no substantial changes except the addition of asbestos shingles to the east exterior in the 1966. In 1967 alterations were the enclosure of the ceiling with acoustic tiles, the addition of ceiling fans, and a new kitchen sink. The property has a steel link fence since 1971, and it has been kept locked since a child drowned in the mid-1990s.

NON-CONTRIBUTING RESOURCE

Toward the west side of the property is a large lime rock with a brass plaque commemorating the Community Club. It was placed in 1970 (Photo #11).

**United States Department of the Interior
National Park Service**

**NATIONAL REGISTER OF HISTORIC PLACES
CONTINUATION SHEET**

Section number 8 Page 1 **LAKE OF THE HILLS COMMUNITY CLUB,
LAKE WALES, POLK CO., FLORIDA**

SUMMARY

The Lake of the Hills Community Club is nominated to the National Register for its significance on the local level under Criteria A in the area of Social History. The building has served as a community social center and voting place since its construction in 1929. The property was always been open for public swimming until several years ago.

HISTORIC CONTEXT

Lake Starr was first called Camp Hawkins and later Lake Hawkins for a renowned hunter and trapper from Bartow. He made annual trips to the lake during the 1880's, and would take friends with him as well as "a vast supply of the best brands of liquor refreshment." It later became known as Lake Starr due to its irregular outline. In 1923 there was an effort to change the name to Lake of the Hills. The name never took, but the development surrounding it came to be called that. Lake of the Hills is an unincorporated community that grew to a winter population of approximately 300.

In the 1910s, the Howie Land Company of Chicago began promoting and selling the land around Starr Lake. Houses were eventually built around the lake, and on higher land directly to the west. In 1915, a Dr. D.A. Haines designed a pavilion on the west side of the lake, and Arthur, George, and Wes Kirch helped him build it. The pavilion was where the club building now stands. The pavilion was a screened-in wooden building on stilts. In 1918 the Lake of the Hills Community Club, Incorporated was formed to coordinate activities at the location. Residents enjoyed picnics there. The Methodist Church used the pavilion weekly for Sunday School and for its Christmas productions. By 1920, members had built a swimming dock, and a two-level diving tower.

As the community developed, the Howie Land Company donated land for a church and school on West Starr Avenue, directly behind a Torbert's Country Store. In 1922, W.J. Howey donated approximately one acre of land, known as the Park Lot of Starr Lake, to be used by the Lake of the Hills Community Club, and by 1923 there were many families supporting the community organization. An early support group was the men's Recreation Club which maintained the pavilion, grounds and lakefront.

SIGNIFICANCE

Following a hurricane that severely damaged the pavilion, the Community Club decided to build a more substantial social center and again Dr. Haines designed the building. One of the popular building fund raising events was box suppers. Single women would make a dinner for two and pack it in a decorated box that then was auctioned to the highest bidding gentleman. The successful buyer would share dinner with the woman who had made the meal. Chicken dinners were common and popular, giving rise to what continues as the club's traditional chicken dinner. The building was completed in 1929. A surplise of \$196 was deposited in a bank that failed to open the next day due to the onset of the Great Depression.

**United States Department of the Interior
National Park Service**

**NATIONAL REGISTER OF HISTORIC PLACES
CONTINUATION SHEET**

Section number 8 Page 2 **LAKE OF THE HILLS COMMUNITY CLUB,
LAKE WALES, POLK CO., FLORIDA**

The first group to meet in the new clubhouse was the Recreation Club. When the men were working, the ladies would cook and sometimes help the men with the grounds and maintenance of the structures. Later the women organized as The Willing Workers. The building was hired out for professional meetings and private events. The local Waverly Citrus Growers Association had been large contributors to the construction in exchange for holding their annual meetings at the clubhouse. The Willing Workers attended to the maintenance before and after these events. The club has always been used as a voting precinct. Since the time of the pavilion's construction in 1915, until today, an ice cream social is held every February. The clubhouse was where people from the community met and socialized. Since the population swells seasonally with many residents visiting from the north, there have always been monthly gatherings between October and May; a practice that continues today. Club members got together for covered dish dinners, meetings, and programs once monthly. Square dances were held, and canning classes were taught. For major holidays there were theme parties. In the preparation of this nomination many interviews of senior residents were conducted which repeatedly elicited the comment that the Club and its social events held the community together.

United States Department of the Interior
National Park Service

**NATIONAL REGISTER OF HISTORIC PLACES
CONTINUATION SHEET**

Section number 9 Page 1

**LAKE OF THE HILLS COMMUNITY CLUB,
LAKE WALES, POLK CO., FLORIDA**

BIBLIOGRAPHY

Kaucher, Mildred. Lake of the Hills, Its History. Tampa: Bay Center Corporation, 1976.

Lake of the Hills Community Club, Deed, January 28, 1987 (property conveyed by W.J. Howey in 1922).

The Lake Wales Highlander (newspaper), August 8, 1923, page 3.

Polk County Property Appraisers Office, Plat Book 4 (Plat of survey by E.C. Olson).

Interviews by Evelyn Erickson:

Laura Stokes Bolden, early club member

Johanna Buscher, early club member

Mrs. Stokes Dykmann, original member Willing Workers group

Mrs. Stokes Neegman, original member Willing Workers group

**United States Department of the Interior
National Park Service**

**NATIONAL REGISTER OF HISTORIC PLACES
CONTINUATION SHEET**

Section number 10 Page 1 **LAKE OF THE HILLS COMMUNITY CLUB,
LAKE WALES, POLK CO., FLORIDA**

VERBAL BOUNDARY DESCRIPTION

W.J. Howey Land Co., Plat Book 4, page 7&8; Prop. # 14-29-27-860590-000107

BOUNDARY JUSTIFICATION

The boundary encompasses the property historically associated with the Lake of the Hills Community Club.

**United States Department of the Interior
National Park Service**

**NATIONAL REGISTER OF HISTORIC PLACES
CONTINUATION SHEET**

Section number _____ Photos _____ Page 1 **LAKE OF THE HILLS COMMUNITY CLUB,
LAKE WALES, POLK CO., FLORIDA**

PHOTOGRAPHIC LIST

1. Lake of the Hills Community Club, 47 east Star Ave., Lake Wales
2. Polk County, Florida
3. Kathie Galloway
4. August 1998
5. Mrs. McKinley, 211 S. Lake Starr Blvd., Lake Wales
6. Club and its setting, looking east
7. Photo #1 of 11

Items 1-5 are the same for the remaining photographs.

6. Club and Lake Starr, looking east
7. Photo #2 of 11

6. East Starr Avenue intersection with Hwy. 27, looking north
7. Photo #3 of 11

6. Main façade of club, looking east
7. Photo #4 of 11

6. South elevation of the club, looking north
7. Photo #5 of 11

6. East elevation, looking west
7. Photo #6 of 11

6. North elevation, looking west
7. Photo #7 of 11

6. Interior main room showing front door, looking west
7. Photo #8 of 11

6. Kitchen, looking north
7. Photo #9 of 11

6. Eastern, lake view wall, looking east
7. Photo #10 of 11

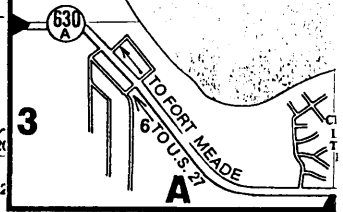
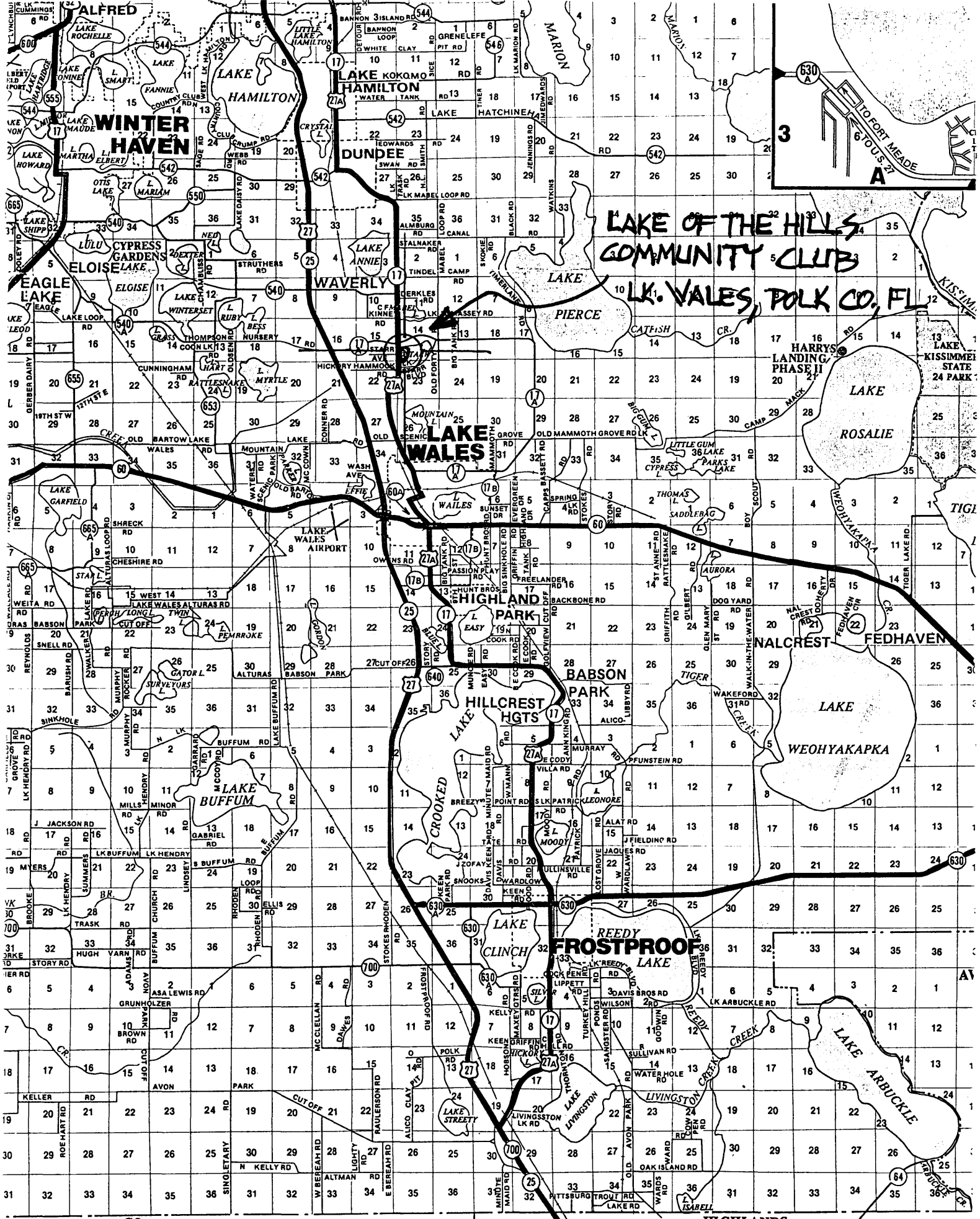
**United States Department of the Interior
National Park Service**

**NATIONAL REGISTER OF HISTORIC PLACES
CONTINUATION SHEET**

Section number _____ Photos _____ Page 2

**LAKE OF THE HILLS COMMUNITY CLUB,
LAKE WALES, POLK CO., FLORIDA**

6. Plaque, looking east
7. Photo #11 of 11



**LAKE OF THE HILLS
COMMUNITY CLUBS**
LK. WALES, POLK CO., FL

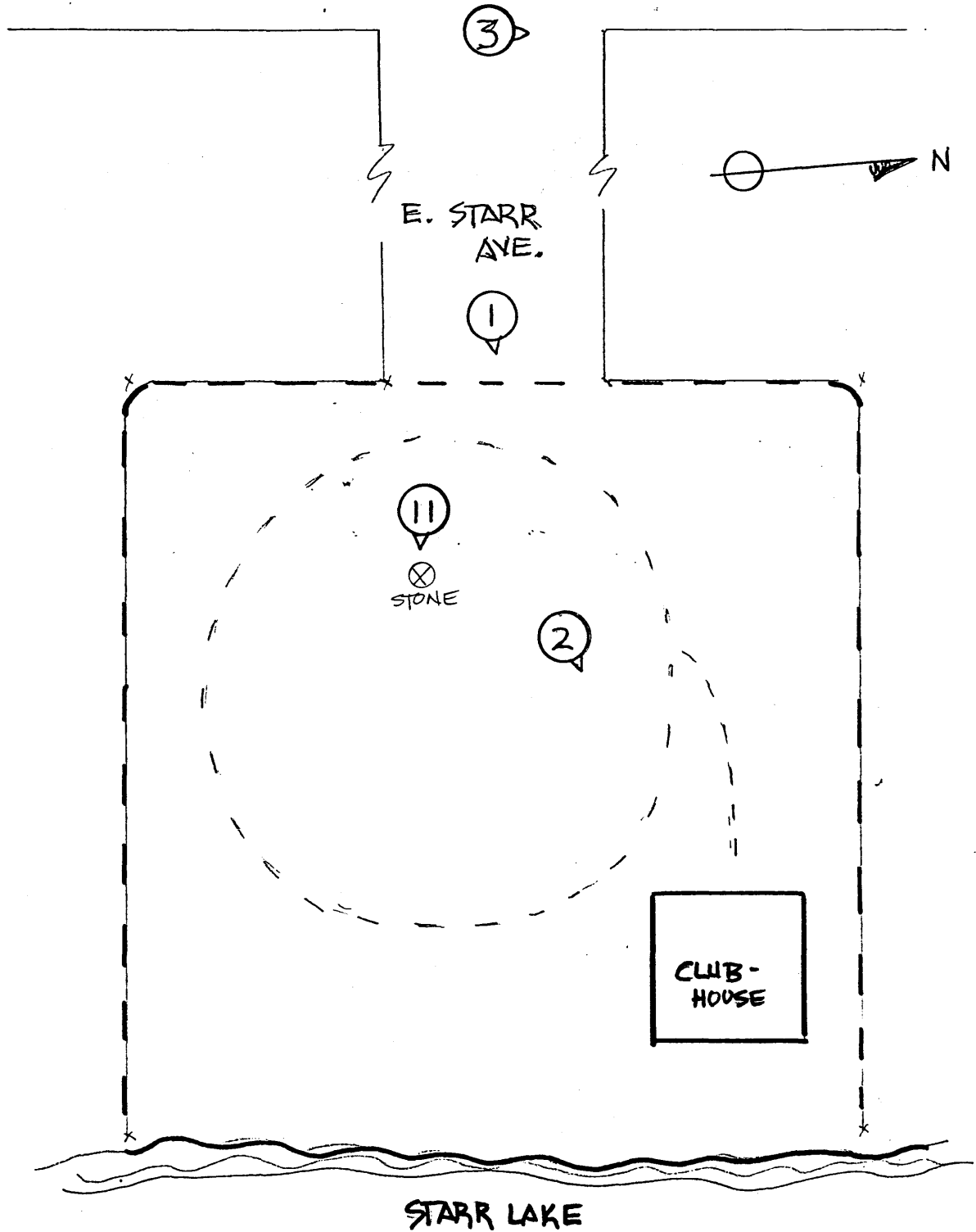
CO.

HIGHLANDS

AVON PARK
TO

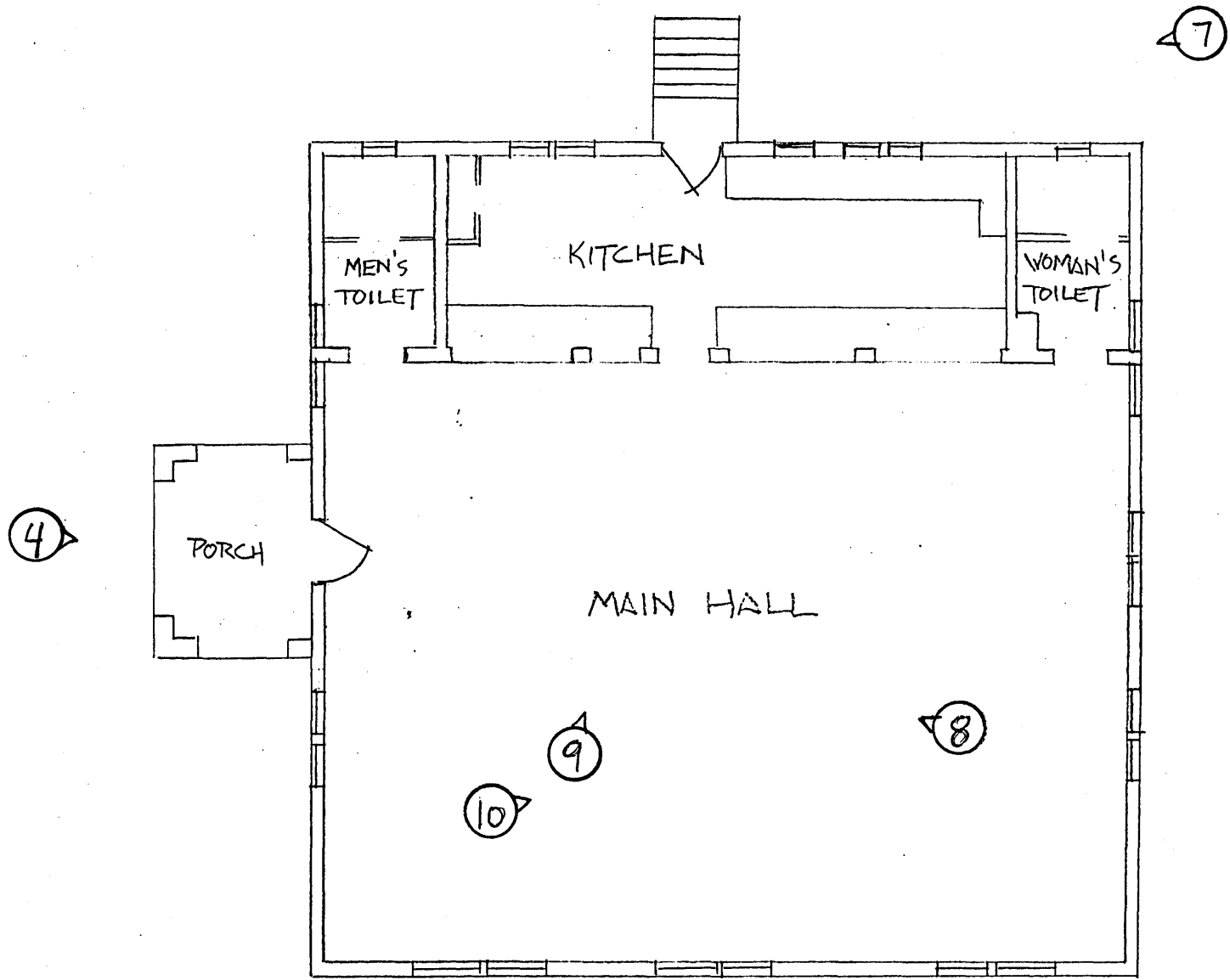
AVON PARK
TO

Hwy. Alt. 27



LAKE OF THE HILLS COMMUNITY CLUB
Lake Wales, Polk County, Florida

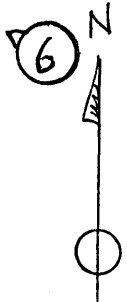
SITE/BOUNDARY MAP



LAKE OF THE HILLS COMMUNITY CLUB
 Lake Wales, Polk County, Florida

FLOOR PLAN

NOT TO SCALE



STARR
LAKE

