

Abo School From the air  
ca. early - mid 1960s

Credit line: ANESIA HISTORICAL MUSEUM + ART CENTER,  
ANESIA CHAMBER OF COMMERCE COLLECTION



A B O ELEM ENTARY CATOO AND  
FALLOUT SHELTER, SION,  
ANTOGIA, NEW MEXICO

100 ELEMENTARY  
SCHOOL 100  
FALLOUT SHELTER



Abbo Elementary School and  
Fallout Shelter

ca. mid 1960s

credit line: Artesia Historical Museum & Art Center,  
Hilt & Nancy Houston collection

ARTESIA, NEW MEXICO



ADD ELEMENTARY SCHOOL AND FREEOUT STREET

CARPENTERA / MULTI-PURPOSE ROOM



*EMERGENCY SHOWER*  
SWING TO OPERATE



SWING  
TO OPERATE

SAFETY  
EMERGENCY SHOWER  
SWING TO OPERATE

Also ~~ELMISTERY~~ & FOLLOUT S METER

SIGN TO EMERGENCY STATION

ARTESIA, NEW MEXICO



SUN ELEMNTARY  
SCHOOL SUN  
COLLEBY COLLEBY

5723



Also from ~~Friday~~ SCHOOL AND FALL OUT ~~SCHOOL~~

ATLANTA, NEW MEXICO.



ABO complementary; PATEL OUT STREET  
MAN ENTRANCE, FROM INTERIOR  
ARTESIA, NEW MEXICO.



OFFICE

ABO ELEMENTARY SCHOOL AND FRANKLIN STREET,  
MAIN ENTRANCE

ARTESIA, NEW MEXICO



Manufacturers of  
**NICAD**

**NICKEL CADMIUM ALKALINE STORAGE BATTERIES**

NO. OF CELLS TYPE AMPS

**DISCHARGE:** MEASURE THE BATTERY VOLTAGE AT 20.0 ± 0.05 VOLTS  
RECHARGE VOLTAGE AT BATTERY TERMINALS

**ELECTROLYTE:** ADD DISTILLED WATER AS REQUIRED TO MAINTAIN ELECTROLYTE LEVEL AT 1/8" TO 3/8" ABOVE PLATE TOPS USE HYDROBATTERY AND ELECTROLYTE LEVEL TEST TUBE SUPPLIED WITH BATTERY ALSO OPEN TAPPING SPECIFIC GRAVITY AT THE MAXIMUM LEVEL SHOULD BE BETWEEN 1.204 AND 1.212

**EXTERNAL USE:** KEEP BATTERY CLEAN AND DRY KEEP CELL TOPS COATED WITH PETROLEUM JELLY BATTERY BODIES SHOULD BE PROVIDED WITH OPEN DRAIN HOLES DO NOT ALLOW BATTERY TO STAND IN WATER

**KEEP SULPHURIC ACID AWAY FROM THE BATTERY**

**KEEP SPARKS AND OPEN FLAMES AWAY AT ALL TIMES**

**AVOID SHORT CIRCUITING CELLS WITH TOOLS OR METAL OBJECTS**

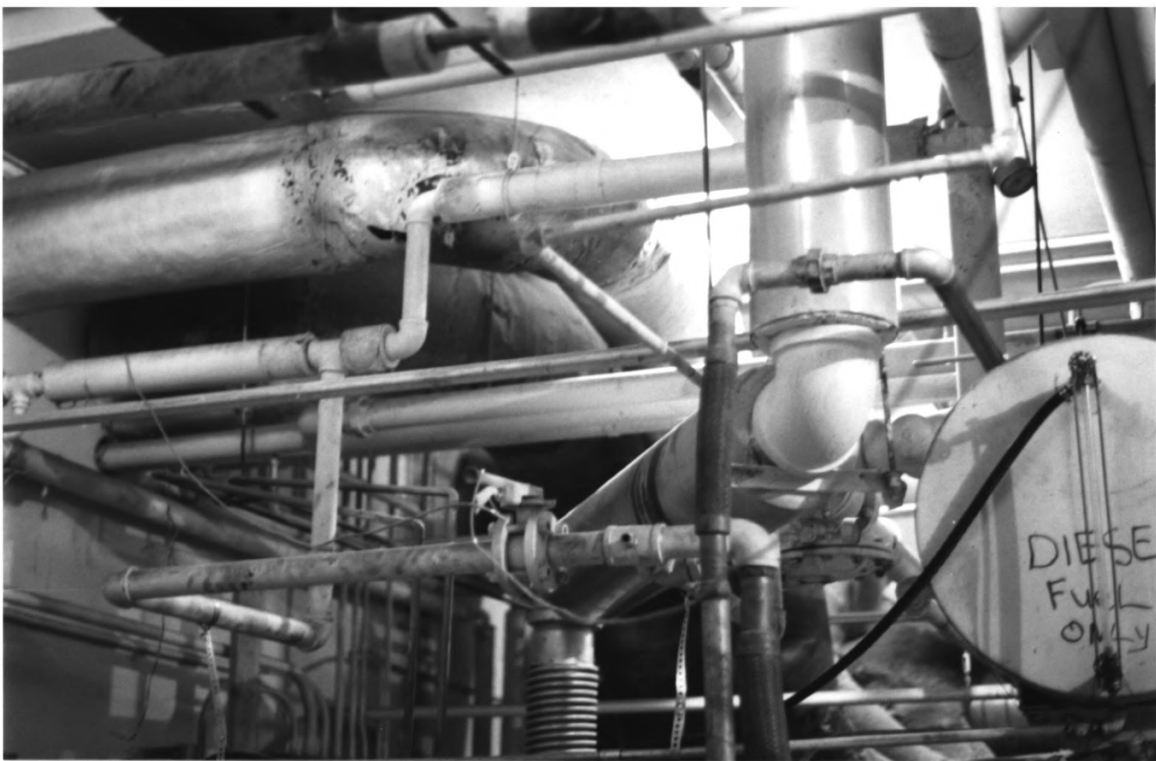
**KEEP VENTS CLOSED EXCEPT WHEN CHECKING ELECTROLYTE LEVEL**

**WARNING: IF ELECTROLYTE IS SPILLED ON PERSON OR CLOTHING WASH AWAY WITH PLENTY OF WARM WATER OR COLD WATER**

**FOR FURTHER INFORMATION REFER TO  
NICAD INSTRUCTION BOOKLET NO. 321 FURNISHED WITH THE BATTERY**

NICAD SYSTEMS  
DODGE NATIONAL BATTERIES, INC.  
Manufacturers Representatives

Also ELEMENTARY; FALLOUT SHIELDER  
MECHANICAL EQUIPMENT  
ARTS, NEW MEXICO



ADD ELEMENTARY ; PAULOUT STREET  
MECHANICAL EQUIPMENT  
ALTESIA, NEW MEXICO



Abso School under construction

ca. winter/early spring 1962

Photo taken by William J. Bennett

Credit line: Amesia Historical Museum & Art Center,  
Amesia Chamber of Commerce collection