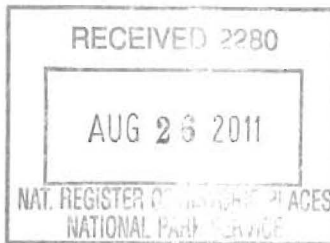


United States Department of the Interior
National Park Service



726

National Register of Historic Places Registration Form

This form is for use in nominating or requesting determinations for individual properties and districts. See instructions in National Register Bulletin, *How to Complete the National Register of Historic Places Registration Form*. If any item does not apply to the property being documented, enter "N/A" for "not applicable." For functions, architectural classification, materials, and areas of significance, enter only categories and subcategories from the instructions. Place additional certification comments, entries, and narrative items on continuation sheets if needed (NPS Form 10-900a).

1. Name of Property

historic name North Broadway School

other names/site number KHRI #103-484

2. Location

street & number 801 North Broadway Street

N/A	not for publication
N/A	vicinity

city or town Leavenworth

state Kansas code KS county Leavenworth code 103 zip code 66048

3. State/Federal Agency Certification

As the designated authority under the National Historic Preservation Act, as amended,
I hereby certify that this nomination request for determination of eligibility meets the documentation standards for registering properties in the National Register of Historic Places and meets the procedural and professional requirements set forth in 36 CFR Part 60.

In my opinion, the property meets does not meet the National Register Criteria. I recommend that this property be considered significant at the following level(s) of significance:

national statewide local

Patrick Selmer DSTHPO 8/18/11
Signature of certifying official/Title Date

Kansas State Historical Society
State or Federal agency/bureau or Tribal Government

In my opinion, the property meets does not meet the National Register criteria.

Signature of commenting official Date

Title State or Federal agency/bureau or Tribal Government

4. National Park Service Certification

I hereby certify that this property is:

entered in the National Register determined eligible for the National Register

determined not eligible for the National Register removed from the National Register

other (explain:)

For Elean H. Beall 10.6.11
Signature of the Keeper Date of Action

North Broadway School

Leavenworth County, Kansas
Historic Public Schools of Kansas
MPDF

Name of Property

County and State

5. Classification

Ownership of Property

(Check as many boxes as apply.)

- private
- public - Local
- public - State
- public - Federal

Category of Property

(Check only **one** box.)

- building(s)
- district
- site
- structure
- object

Number of Resources within Property

(Do not include previously listed resources in the count.)

Contributing	Noncontributing	
1		buildings
		district
		site
		structure
		object
1		Total

Name of related multiple property listing

(Enter "N/A" if property is not part of a multiple property listing)

Number of contributing resources previously listed in the National Register

Historic Public Schools of Kansas

0

6. Function or Use

Historic Functions

(Enter categories from instructions.)

EDUCATION/School

Current Functions

(Enter categories from instructions.)

VACANT/NOT IN USE

7. Description

Architectural Classification

(Enter categories from instructions.)

LATE 19TH AND EARLY 20TH CENTURY

REVIVAL/Tudor Revival

Materials

(Enter categories from instructions.)

foundation: STONE

walls: BRICK

roof: ASPHALT

other:

North Broadway School

Leavenworth County, Kansas
Historic Public Schools of Kansas
MPDF

Name of Property

County and State

Narrative Description

(Describe the historic and current physical appearance of the property. Explain contributing and noncontributing resources if necessary. Begin with a **summary paragraph** that briefly describes the general characteristics of the property, such as its location, setting, size, and significant features.)

Summary Paragraph

The North Broadway School at 801 N. Broadway Street, Leavenworth, Leavenworth County, Kansas, is in a residential neighborhood approximately one mile northwest of the downtown commercial center. The property is also three blocks south of the entrance to Fort Leavenworth and seven blocks southeast of the Fort Leavenworth federal penitentiary. The two-story, U-shaped building was built in 1923. The concrete structure has tapestry brick cladding with cast stone ornament and a flat roof. The foundation has a quarry-faced limestone veneer. Pointed-arch cast stone door surrounds at the front entries; diamond and criss-cross patterned brickwork in the parapets of the front and rear elevations and between window bays on the north and south elevations; and smooth cast stone beltcourses and window surrounds communicate the Tudor Revival styling of the North Broadway School. The massing, form, materials, and functional features clearly illustrate the modern elementary school version of the City Graded School property subtype described in Section F of the Multiple Property Documentation Form "Historic Public Schools of Kansas." The North Broadway School has experienced minimal alterations. The most notable has been the replacement of historic windows and exterior doors, although the historic openings are intact. These changes do not diminish one's understanding the building as a public school from the era of its construction. It retains integrity of location, setting, design, materials, workmanship, feeling, and association.

Narrative Description

SETTING

The nominated property occupies the entire block bounded by North Broadway Street on the east, North 8th Street on the west, Dakota Street on the north, and Kiowa Street on the south, with the primary elevation of the school spanning the block facing North Broadway. One- and two-story single-family dwellings fill the surrounding blocks. The modest late-nineteenth and early-twentieth century residences formed the neighborhood for North Broadway School. The exception is a historic three-story residence that occupies the block south of the school. It was constructed as the William Small Memorial Home for Old Ladies in 1904.¹ It is now apartments.

The grade rises steeply on the east, north, and south sides of the block, from the public sidewalk to the elevated school lot. A grassy lawn dotted with mature trees and evergreens surrounds the front and side elevations. An asphalt parking lot occupies the west half of the lot behind the school. The parking lot is accessed via a curved driveway from the northwest corner of the lot off Dakota Street. Concrete walkways and stairs connect entrances on the front elevation to the public sidewalks at the northeast and southeast corners of the school. A public sidewalk also runs the length of the block along Dakota Street.

EXTERIOR

The main block of the North Broadway school has a long primary facade that faces east toward North Broadway Street; two short perpendicular wings extend west from the main block, creating a wide and shallow courtyard on the rear (west) elevation. The front (east) and rear (west) elevations have nine bays and the north and south elevations have seven bays. A regular pattern of window openings defines the bays. Some window openings on the north, south, and west elevations have single windows. The bays on the west elevation of the projecting wings are blank with some detail but no fenestration.

The second and eighth bays of the symmetrical front (east) façade project slightly, giving the building a castle-like feel that reflects its Tudor Revival styling. The primary entrances fill the first story of these projecting bays. Other details that convey the building's style include pointed-arch, cast stone door surrounds at the front entries; diamond and criss-cross patterned brickwork in the parapets of the front and rear elevations and between window bays on the north and south elevations; and smooth cast stone beltcourses and window surrounds. The name "North Broadway School" is cast into

¹ Dale Nimz, National Register of Historic Places Multiple Property Documentation Form for The Designs of Architects William Pratt Feth and Myron Kauffman Feth in Leavenworth, Kansas, ca. 1895-1942, 2007, 13.

North Broadway School

Leavenworth County, Kansas
Historic Public Schools of Kansas
MPDF

Name of Property

County and State

panels above each of the front entries. The parapets in the projecting bays are pierced with cast block ornamentation. Limestone trim enframes the brick under each window and intermittently enframes the first story windows. Within the limestone frame under the first floor windows is panel of stacked header courses that projects slightly. Diamond patterns created from buff brick ornament the spandrels between the first and second story windows. Blank cast stone panels set flush with the brick walls enhance the north and south end bays on the front (east) and rear (west) elevations. Historic cast stone through wall scuppers pierce the parapet walls on each elevation. These have been abandoned and now non-historic metal scupper heads and downspouts on the east, north, and south elevations drain water from the roof.

Non-historic aluminum-framed windows fill the historic window openings. The one-over-one hung sashes are topped by large transoms filled with opaque panels. Historic drawings indicate that the original configuration featured four-over-four paired windows and six-over-six single windows.

Non-historic aluminum-framed glazed doors fill the entrances on the front and rear elevations. Aluminum panels fill the transoms above the rear doors. Stucco fills the transom area above the front doors. Historic drawings indicate that each leaf of the paired doors originally had six-lights and a multi-light transom topped each opening (see additional documentation).

A short flight of concrete stairs rises from the sidewalk to the front doors. Cheek walls flanking the stairs have quarry-faced limestone block bases topped with large cast stone railings. The rear entrances are at grade level.

The flat roof is hidden by parapets on each elevation and is not visible from the ground. However, sloped roof surfaces are visible above the rear entry vestibules. These surfaces have flat-seamed metal roofing.

INTERIOR

The interior of the North Broadway School retains its original configuration of corridors and functional spaces, as well as many of its simple historic finishes. The U-shaped double-loaded corridors organize both the 1st and 2nd floors. Classrooms line the exterior (south, east, and north) sides of the corridors. The gymnasium occupies the center of the building, toward the rear within the "U."

There are two rear (west) entrances into each wing from the parking lot and two front (east) entrances into each wing. All of the entrance vestibules have brick-clad walls and an intermediate doorway consisting of paired multi-light varnished wood doors with multi-light sidelights and transom.

Within the projecting front towers, two stair halls rise from the front entrances to the second floor. The stairs have concrete treads and risers. A solid painted plaster wall topped with a thick wood cap separates the stair runs.

Throughout the building the plaster walls and ceilings are painted. Some of the plaster ceilings on the 2nd floor have been removed due to water damage. Plywood now covers these ceilings. All of the ceilings retain their original height. The corridor walls have simple wood chair rail and picture rail moldings. A high blond brick wainscot clads the gymnasium walls. The floors throughout the school are concrete. Composition tile covers floors in some classrooms and the gymnasium. Similar tile has been removed from other classrooms. Two classrooms are carpeted. Where concrete is exposed (corridors and some classrooms) it is polished and smooth. The corridors and most classrooms have a concrete base that is integral with the concrete floor.

Interior doorways have varnished wood jambs and multi-light doors. Closets within the classrooms have solid two-panel wood doors. Windows retain the historic wood mullion dividing the windows and the wood sill. All other window elements were replaced when the aluminum windows were installed. The window openings are uncased with plaster jambs returning directly to the window frames. Two first floor classrooms, the northeast and southwest (historically the manual training room and domestic arts/science room, respectively), have wood bases. A simple wood picture rail molding lines the top of the walls. Metal electrical conduit is surface-mounted to the walls and ceilings in the corridors and classrooms.

Rectangular classrooms line the exterior perimeter of the double-loaded corridor on both stories. The spacious classrooms have high ceilings and large window bays that line the perimeter wall. The end walls have built-in varnished wood cabinetry and closets. The cabinets have multi-light paired doors. Closets have multiple solid wood doors that pivot in unison on a single center point. The classroom sides of the closet doors have chalk boards. Historic chalk boards in

North Broadway School

Leavenworth County, Kansas
Historic Public Schools of Kansas
MPDF

Name of Property

County and State

varnished wood frames line the walls of the classrooms. In the former kindergarten classroom (southwest classroom on the first floor) a brick fireplace graces the east wall. Separate girl's and boy's toilets are situated at the west end of the former kindergarten classroom.

Two sets of paired doors access to the gymnasium from the main north-south corridor. A raised stage with a rectilinear proscenium fills the north wall of the gymnasium. Three large windows pierce the west wall. Three sets of three-part multi-light windows pierce the top of the east wall. These single-hung sashes rise up into the wall cavity and allow for observation from the second floor corridor. Non-historic composition tile covers the concrete gym floor. The shallow stage has wood floors and is accessed via stairs on the east and west sides. Blond brick clads the gym walls to a height just above the doorways. Two doorways in the south wall lead to the kitchen (historically a locker room). A historic concrete stair descends to the kitchen.

The boys' and girls' lavatories are located in the southwest and northwest corners of the first floor. The bathrooms do not retain any historic fixtures or partitions.

Administrative offices are found at the center of the main block on both floors. These long, narrow spaces contain built-in casework and single-user bathrooms. The first floor office has a multi-light door surrounded by multi-light sidelights and transom. Additional office space was created by converting a former storage room at the west end of the northeast classroom (historically the "Manual Training Room") on the first floor. On the second floor a counselor's office was created from an original locker room.

The boiler room is in the northwest corner of the basement. Metal stairs with open risers lead down to the concrete floor. The basement walls are solid concrete with the exception of the west wall at the stairs, which is exposed brick.

INTEGRITY

The North Broadway School retains integrity of location, setting, design, feeling, and association. The replacement of windows and doors has partially compromised integrity of materials and workmanship. However, according to the registration requirements set forth in Section F of the Multiple Property Documentation Form (MPDF) "Historic Public Schools of Kansas," these alterations do not automatically render the property ineligible for register listing. More importantly, the North Broadway School retains its historic masonry openings and historic interior configuration and finishes. The building clearly communicates its historic function as a public elementary school and reflects the attributes of the City Graded School property subtype described in Section F of the MPDF. The North Broadway School was constructed to educate children in an established residential neighborhood of the city of Leavenworth (unlike earlier county schools), and it had space devoted to specific functions, such as kindergarten, manual training, and science. These elements are character-defining features of City Schools.

North Broadway School

Leavenworth County, Kansas
Historic Public Schools of Kansas
MPDF

Name of Property

County and State

8. Statement of Significance

Applicable National Register Criteria

(Mark "x" in one or more boxes for the criteria qualifying the property for National Register listing.)

- A Property is associated with events that have made a significant contribution to the broad patterns of our history.
- B Property is associated with the lives of persons significant in our past.
- C Property embodies the distinctive characteristics of a type, period, or method of construction or represents the work of a master, or possesses high artistic values, or represents a significant and distinguishable entity whose components lack individual distinction.
- D Property has yielded, or is likely to yield, information important in prehistory or history.

Areas of Significance

(Enter categories from instructions.)

ARCHITECTURE

EDUCATION

Period of Significance

1923-1961

Significant Dates

1923

Significant Person

(Complete only if Criterion B is marked above.)

N/A

Cultural Affiliation

N/A

Architect/Builder

Smith, Charles A. (Architect)

Gordon Walker Construction Company (Builder)

Criteria Considerations

(Mark "x" in all the boxes that apply.)

Property is:

- A Owned by a religious institution or used for religious purposes.
- B removed from its original location.
- C a birthplace or grave.
- D a cemetery.
- E a reconstructed building, object, or structure.
- F a commemorative property.
- G less than 50 years old or achieving significance within the past 50 years.

Period of Significance (justification)

The period of significance begins with the construction of the school in 1923 and extends to the 50-year cut-off in 1961.

Criteria Considerations (explanation, if necessary)

N/A

North Broadway School

Leavenworth County, Kansas
Historic Public Schools of Kansas
MPDF

Name of Property

County and State

Statement of Significance Summary Paragraph (Provide a summary paragraph that includes level of significance and applicable criteria.)

The North Broadway School at 801 North Broadway Street, Leavenworth, Leavenworth County, Kansas, is locally significant under National Register Criterion A for the area of EDUCATION and under Criterion C for the area of ARCHITECTURE. As defined by the Multiple Property Documentation Form (MPDF) "Historic Public Schools of Kansas," the North Broadway School possesses the distinct characteristics of a City School, specifically the City Graded School sub-type. A City School is a public school constructed for a city with a population over 2,000. Like the City Graded School property type, North Broadway School provides separate classroom facilities for each grade within the same building. As the concept of building separate high schools and junior high schools developed, the City Graded School evolved into the modern elementary school, housing only students in kindergarten through fifth or sixth grade. The North Broadway School and its associated property illustrate the evolution of this class of educational facilities. Constructed in 1923, the nominated school exemplifies an early twentieth-century, post World War I elementary school. It is a two-story masonry structure with several customized interior spaces, including a kindergarten room, manual training room, domestic arts/science room, and gymnasium/auditorium. The location of the North Broadway School at the heart of a residential area, near the center of the city, also expresses an essential characteristic of a City School.

The North Broadway School meets all of the registration requirements presented in the MPDF for its property type. It was constructed as a public school prior to 1955. It remains in its original location, within the residential neighborhood in which it was constructed. The building also retains its massing, exterior form, original primary building materials, pattern of window and door openings, original ornamentation and detailing, and interior corridor and classroom configuration. Nearly all of the historic interior finishes remain intact. The building functioned as an elementary school through the 2010 academic year when the school district vacated and sold the building.

City school design followed accepted architectural trends. Revival styles popular during the early twentieth century were commonly used for school design. The school's significance to the community was conveyed by its formal, symmetrical masonry form. Charles A. Smith, a prominent architect and prolific designer of schools, designed the North Broadway School in the stately Tudor Revival style in 1922.

Narrative Statement of Significance (Provide at least **one** paragraph for each area of significance.)

The North Broadway School is an excellent example of a City Graded School, an elementary school property sub-type. According to the MPDF, early City Graded Schools in Kansas housed all grades from first through high school in one building with multiple classrooms. After high school instruction was removed to its own building, City Graded Schools included only first through eighth grades. The Progressive Era initiated additional changes to the curriculum and organization of primary education. There was an increased demand for specialized spaces, not just at the high school level, but for the lower grades as well, including designated spaces for art, music, kindergarten, and physical activity. North Broadway School also had specialized classrooms for manual training, domestic arts and science, and physical education. Further separation of grades into junior high and middle schools increased during the Progressive Era, resulting in the development of the modern elementary school. An elementary school educated kindergarteners through fifth or sixth graders, with each grade in a separate classroom, and incorporated many of the specialized spaces encouraged during the Progressive Era.² North Broadway School was an elementary school serving kindergarten through sixth grade. A special classroom for the kindergarten had its own restroom and a fireplace.

Prior to the establishment of a public education system in Leavenworth several private schools provided education for the city's juvenile population. According to one account, approximately twenty private schools operated in Leavenworth between 1855 and 1898.³ The first school in Leavenworth was a private school established in 1855 by Reverend J.B. McAfee. Evidently, his political views and anti-slavery sentiments clashed with the opinions of many Leavenworth

² Brenda Spencer, National Register of Historic Places Multiple Property Documentation Form for Historic Public Schools of Kansas, 2005, F 31.

³ J.H. Johnston, III, *Leavenworth: Beginning to Bicentennial* (Leavenworth, KS: J.H. Johnston III), 1978, 104.

North Broadway School

Leavenworth County, Kansas
Historic Public Schools of Kansas
MPDF

Name of Property

County and State

residents, and he was forced to resign in 1857.⁴ The same fate befell the school's next headmaster, Professor N.Z. Strong, and the school closed.⁵

The Leavenworth Board of Education was established in 1864. It immediately began planning the city's first public school building. In 1867 the Morris School opened at Fifth and Dakota Streets. The four-story school accommodated 900 students in grades 1-12.⁶ High school students attended classes on the upper floors. School enrollment flourished and by 1872 a separate high school building was constructed at Seventh and Oak Streets.⁷ In 1904 a second high school building was built at Fourth and Walnut Streets. Leavenworth's public school building stock consisted of about a dozen schools for lower grades and the large high school in 1906.⁸

The Kansas State Normal School conducted a survey of Leavenworth public schools in 1915. At the time, there were eleven schools. These included: one high school; three large schools serving elementary and middle school students; five small elementary schools; and two schools that served the city's African-American students.⁹ The survey found that three-quarters of the elementary school students attended schools that were at least 25 years old (some 50 years old). These facilities were outdated in terms of room arrangements, construction techniques, lighting, heating, hallways, and playgrounds.¹⁰ The survey also found that the city's elementary population had remained steady over the past twenty years and concluded that there would not be significant population growth in the future. Surveyors recommended that the district would not need to build more elementary schools, but should replace the existing buildings with newer, updated facilities within the next few years. The report recommended that the district hire a qualified architect to design the new modern school facilities.¹¹

In 1921 planning was underway to construct a junior high, two large grade schools, and an eight room school in Leavenworth.¹² Following the recommendation that the Board consult an expert school architect for remodeling and future school expansions, architect Charles A. Smith was hired to design all four buildings.¹³ Charles Smith was indeed an expert at school design. He had served as the architect for the Kansas City, Missouri School District since 1898, and had designed nearly 40 new schools and additions to existing buildings by 1920. A *Leavenworth Times* newspaper article from 1922 identifies Smith as the "school board architect," suggesting that the Leavenworth School District hired Smith to be their architect as well.¹⁴

The three proposed grade schools were North Broadway School (Broadway & Kiowa Streets), Third Avenue School (Fourth Avenue and Marshall Street), and Cleveland Park School (Thirteenth and Vilas Streets).¹⁵ Smith designed the schools in 1922.¹⁶ *The Leavenworth Times* reported that Cleveland Park was ready to open by January 1, 1923.¹⁷ North Broadway and Third Avenue Schools opened in September of 1923. Smith subsequently designed a new school to replace Sumner Elementary School, one of Leavenworth's two African-American schools, in 1925.¹⁸

Smith designed the North Broadway and Third Avenue schools with identical layouts and facades. The only variation was in the cast stone ornamentation.¹⁹ The total cost to build the two schools was \$182,000.²⁰ Construction began in

⁴ Johnston, 104.

⁵ Ibid.

⁶ Ibid.

⁷ Johnston, 105.

⁸ H. Miles Moore, *Early History of Leavenworth City and County*, (Leavenworth, KS: Sam'l Dodsworth Book Co.), 1906, 201.

⁹ Walter S. Monroe, *Report of a Survey of the Public Schools of Leavenworth, KS* (Kansas State Teachers College of Emporia, Bureau of Education Measurements: Kansas State Printer), 1915, 23-24.

¹⁰ Ibid, 42.

¹¹ Ibid, 46.

¹² "School Building Progress," *The Journal of the National Education Association*, June 1922, 238.

¹³ Moore, 32.

¹⁴ "Electrical Wiring Contract Is Let," *Leavenworth Times*, December 7, 1922.

¹⁵ "Work on Grade Schools Begun Here Tuesday," *Leavenworth Times*, December 6, 1922.

¹⁶ Ibid.

¹⁷ No additional information is known about the Cleveland Park School. It does not appear on Sanborn Maps, it is not visible on any current aerial or satellite images, and a Google search turned up no information about its history or fate.

¹⁸ Christy Davis, National Register nomination form, "Sumner Elementary School," Topeka, Kansas, 2011.

¹⁹ The Third Avenue School is also vacant. It is a contributing resource to the Third Avenue National Register Historic District

North Broadway School

Leavenworth County, Kansas
Historic Public Schools of Kansas
MPDF

Name of Property

County and State

December 1922. Gordon Walker Construction Company of Salina, KS was the contractor. The first day of school at North Broadway School was September 17, 1923; 382 students attended.

The neighborhood elementary program moved out of North Broadway School in 1999. The Leavenworth School District operated a number of special programs, including an alternative high school, in the building until 2010. After the school closed, it was sold to the current owner.

Architect²¹

Charles Ashley Smith was born in Ohio in 1867. His father was a builder and contractor. The family moved to Iowa when Charles was seven years old. By the time Smith was sixteen, he began working with the architecture firm of Bell and Hackney in Des Moines. When William Hackney moved his office from Iowa to Kansas City in 1887, Smith accompanied him as a draftsman. Hackney served as the Kansas City Missouri School Board architect from 1887-1889 when he died. Smith was named as his replacement.

Following Hackney's death, Smith practiced on his own until he became a partner in the firm Smith, Rea, and Lovitt in 1910. The firm designed many noteworthy buildings in Kansas City, including the Kansas City Club, the Pla-Mor amusement structures, the Firestone Building, Linwood Methodist Church, and Ivanhoe Masonic Temple before the firm dissolved in 1921.

Smith held the position as Kansas City, Missouri School District architect for nearly five decades, designing some fifty school buildings for the district prior to his retirement in 1936. In addition to the schools he designed in Kansas City, Smith is also identified as the designer of education facilities throughout the region including the University of Missouri-Kansas City, William Jewell College, Westminster College, School of the Ozarks, and Leavenworth, Kansas. Although his design of school and educational facilities was prolific, he also designed many other building types, including religious, industrial, commercial, and residential. Smith died at his home on January 10, 1948 at age 81.

CONCLUSION

The North Broadway School retains the character-defining features of a City School, specifically the modern elementary school version of the City Graded School Property Subtype, as described in the Multiple Property Documentation Form (MPDF), "Historic Public Schools of Kansas City." Prolific school architect Charles A. Smith designed the building in 1922. The North Broadway School was built within the period of significance and geographical area of the MPDF. It retains integrity of location, setting, design, materials, workmanship, feeling, and association, and clearly communicates its historic function. The building retains all of its Tudor Revival architectural features and its historic interior configuration. The history of the building and associated property reflect the typical evolution of educational facilities in Kansas from ward school to grade school to elementary school.

²⁰ Ibid.

²¹ Several existing documents reviewed during the preparation of this nomination identify the Leavenworth architecture firm Feth & Feth as the architects for the North Broadway and Third Avenue Schools. These documents include the KSHS historic inventory form for North Broadway School, the Third Avenue Historic District National Register Nomination, and the National Register Multiple Property Documentation Form *the Designs of Architects William Pratt Feth and Myron Kauffman Feth in Leavenworth, Kansas, ca. 1895-1942*. Primary sources located during the course of research name Charles A. Smith as the buildings' architect. These sources include the original architectural drawings; a newspaper article from 1922; and a table of "School-Building Progress" in *The Journal of the National Education Association* from June 1922. Research did not locate any primary source documents confirming that Feth & Feth played any role in the design or construction of the North Broadway or Third Avenue Schools.

North Broadway School

Leavenworth County, Kansas
Historic Public Schools of Kansas
MPDF

Name of Property

County and State

9. Major Bibliographical References

Bibliography (Cite the books, articles, and other sources used in preparing this form.)

"Charles A. Smith Dies." *Kansas City Times*, January 11, 1948.

Davis, Christy. National Register nomination form, "Sumner Elementary School." Topeka, Kansas, 2011.

"Electric Wiring Contract is Let." *Leavenworth Times*, December 7, 1922.

Ford, Susan Jezak. "Charles Ashley Smith: Architect 1867-1948," Missouri Valley Special Collections: Biography, Kansas City Public Library.
http://www.kchistory.org/cdm4/item_viewer.php?CISOROOT=/Biographies&CISOPTR=123&CISOBOX=1&REC=1 (accessed May 6, 2011).

Johnston, J.H. III. *Leavenworth: Beginning to Bicentennial*. Leavenworth, KS: self-published, 1978.

Kansas Writers' Project Work Projects Administration State of Kansas, sponsored by Leavenworth Chamber of Commerce. *A Guide to Leavenworth, Kansas*. Leavenworth, KS: The Leavenworth Chronicle, 1940.

Leavenworth Times. September 17, 1923. Microfilm. Leavenworth Public Library.

Monroe, Walter S. *Report of a Survey of the Public Schools of Leavenworth, KS*. Kansas State Teachers College of Emporia, Bureau of Education Measurements: Kansas State Printer, 1915. www.books.google.com (accessed April 28, 2011).

Moore, H. Miles. *Early History of Leavenworth City and County*. Leavenworth, KS: Sam'l Dodsworth Book Co, 1906.

Nimz, Dale. National Register of Historic Places Multiple Property Documentation Form for The Designs of Architects William Pratt Feth and Myron Kauffman Feth in Leavenworth, Kansas, ca. 1895-1942. 2007.

Piland, Sherry. "A Kansas City Architect: Charles A. Smith." *Historic Kansas City Foundation Gazette*. January/February 1986.

"School Building Progress" Chart. *The Journal of the National Education Association*. Volume XI: January-December, 1922. www.books.google.com (accessed May 4, 2011).

Smith, Charles A. *Third Avenue School*. Architectural Drawings. 1922. Private collection of Duane Denney, Leavenworth, Kansas.

Spencer, Brenda. National Register of Historic Places Multiple Property Documentation Form for Historic Public Schools of Kansas. 2005.

"To Begin Building Two New Schools by January Fifth." *Leavenworth Times*, December 5, 1922.

"Work on Grade School Begun Here Tuesday." *Leavenworth Times*, December 6, 1922.

Whitney, Carrie Westlake. "Charles A. Smith," *Kansas City Missouri: Its History and Its People 1800-1908, Volume II*. Chicago: The S.J. Clarke Publishing Co., 1908.

North Broadway School

Leavenworth County, Kansas
Historic Public Schools of Kansas
MPDF

Name of Property

County and State

Previous documentation on file (NPS):

- preliminary determination of individual listing (36 CFR 67 has been requested)
- previously listed in the National Register
- previously determined eligible by the National Register
- designated a National Historic Landmark
- recorded by Historic American Buildings Survey # _____
- recorded by Historic American Engineering Record # _____
- recorded by Historic American Landscape Survey # _____

Primary location of additional data:

- State Historic Preservation Office
 - Other State agency
 - Federal agency
 - Local government
 - University
 - Other
- Name of repository: Leavenworth Public Library

Historic Resources Survey Number (if assigned): 103-484

10. Geographical Data

Acreage of Property 1.8 acres

(Do not include previously listed resource acreage.)

UTM References

(Place additional UTM references on a continuation sheet.)

1	<u>15</u>	<u>334208</u>	<u>4354545</u>	3	<u> </u>	<u> </u>	<u> </u>
	Zone	Easting	Northing		Zone	Easting	Northing
2	<u> </u>	<u> </u>	<u> </u>	4	<u> </u>	<u> </u>	<u> </u>
	Zone	Easting	Northing		Zone	Easting	Northing

Verbal Boundary Description (Describe the boundaries of the property.)

Lot 109, Day & Macaulay's Subdivision, Leavenworth, Kansas.

Boundary Justification (Explain why the boundaries were selected.)

The boundary includes the parcel of land historically associated with the property.

11. Form Prepared By

name/title Elizabeth Rosin, Principal, Kristen Ottesen, Associate

organization Rosin Preservation, LLC

date May 2011

street & number 215 West 18th Street, Suite 150

telephone 816-472-4950

city or town Kansas City

state MO

zip code 64108

e-mail elizabeth@rosinpreservation.com and kristen@rosinpreservation.com

North Broadway School

Leavenworth County, Kansas
Historic Public Schools of Kansas
MPDF

Name of Property

County and State

Additional Documentation

Submit the following items with the completed form:

- **Maps:** A **USGS map** (7.5 or 15 minute series) indicating the property's location.

A **Sketch map** for historic districts and properties having large acreage or numerous resources. Key all photographs to this map.
- **Continuation Sheets**
- **Additional items:** (Check with the SHPO or FPO for any additional items.)

Photographs:

Submit clear and descriptive photographs. The size of each image must be 1600x1200 pixels at 300 ppi (pixels per inch) or larger. Key all photographs to the sketch map.

Name of Property: North Broadway School
City or Vicinity: Leavenworth
County: Leavenworth **State:** Kansas
Photographer: Brad Finch
Date Photographed: March 2011

Description of Photograph(s) and number:

All digital images labeled as follows: *KS_HistPublicSchoolsofKS_Leavenworth County_NorthBroadwaySchool_#.tif*

- 1 of 12. View of the south and east elevations along Broadway Street, view northwest.
- 2 of 12. East elevation, view west.
- 3 of 12. South elevation, view north.
- 4 of 12. West elevation, view east.
- 5 of 12. North elevation, view south.
- 6 of 12. Typical entryway and detailing on front (east) elevation, view west.
- 7 of 12. Typical sidelights/transom at entries, 1st floor, view northwest.
- 8 of 12. Typical corridor, 1st floor, view southwest.
- 9 of 12. Gymnasium/auditorium, view northwest.
- 10 of 12. Typical classroom.
- 11 of 12. Typical classroom.
- 12 of 12. Typical casework/coat closet in classroom.

North Broadway School

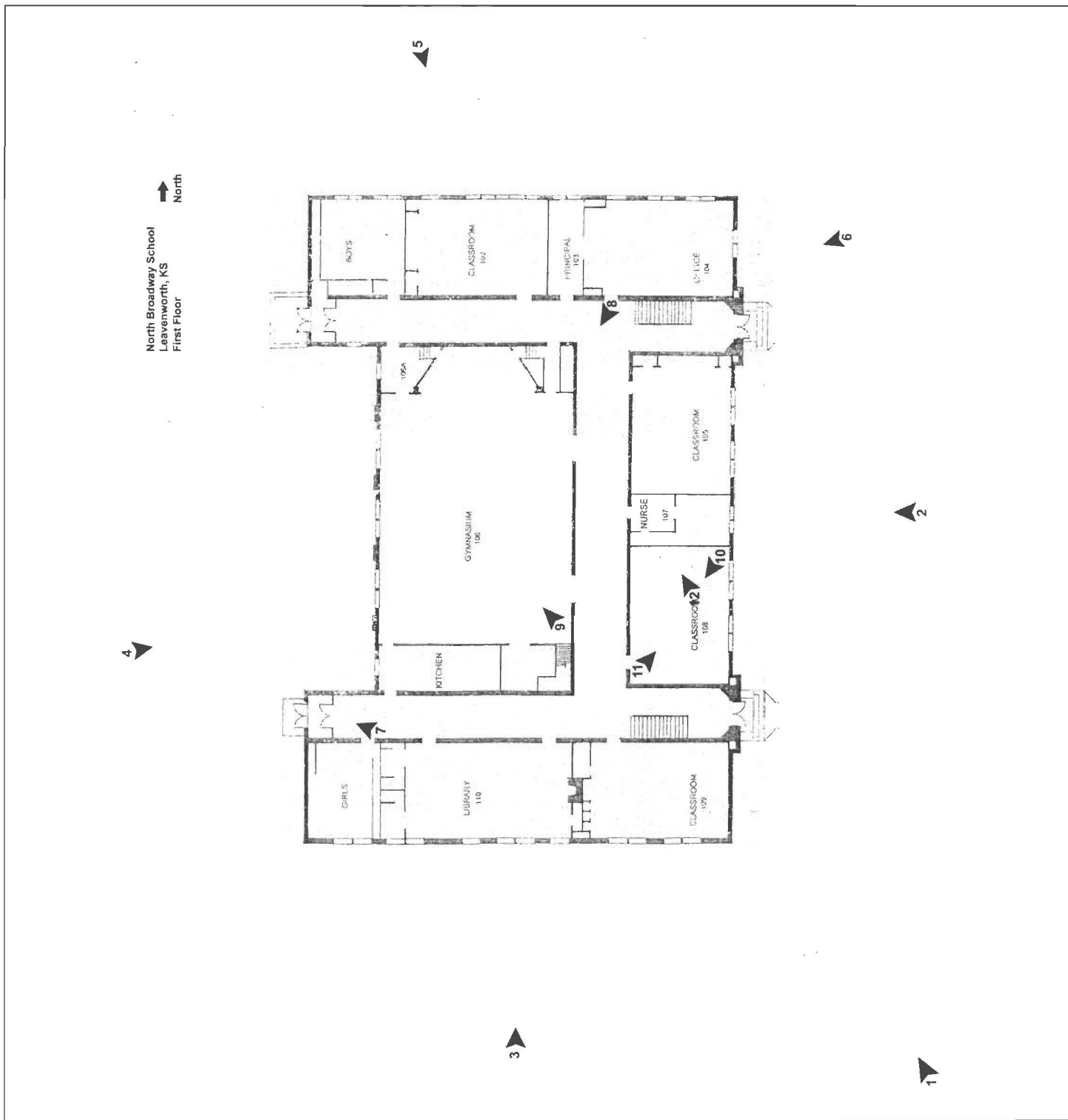
Leavenworth County, Kansas
Historic Public Schools of Kansas
MPDF

Name of Property

County and State

Additional Documents:

Photo Key Map



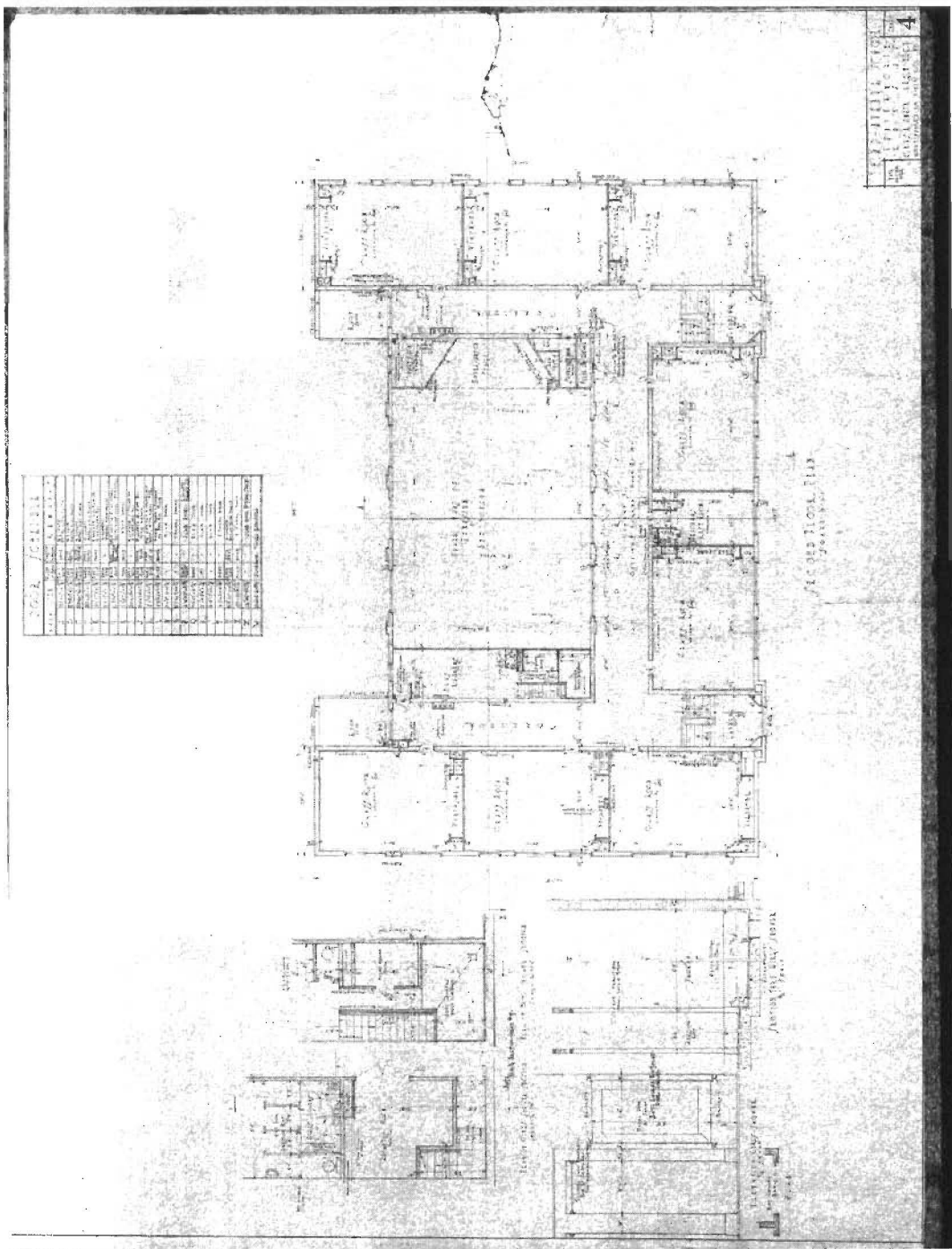
North Broadway School

Leavenworth County, Kansas
Historic Public Schools of Kansas
MPDF

Name of Property

County and State

Additional Documents:



Third Avenue School: First Floor Plan

(Third Avenue and North Broadway Schools were designed by the same architect and are identical in plan and detail.)

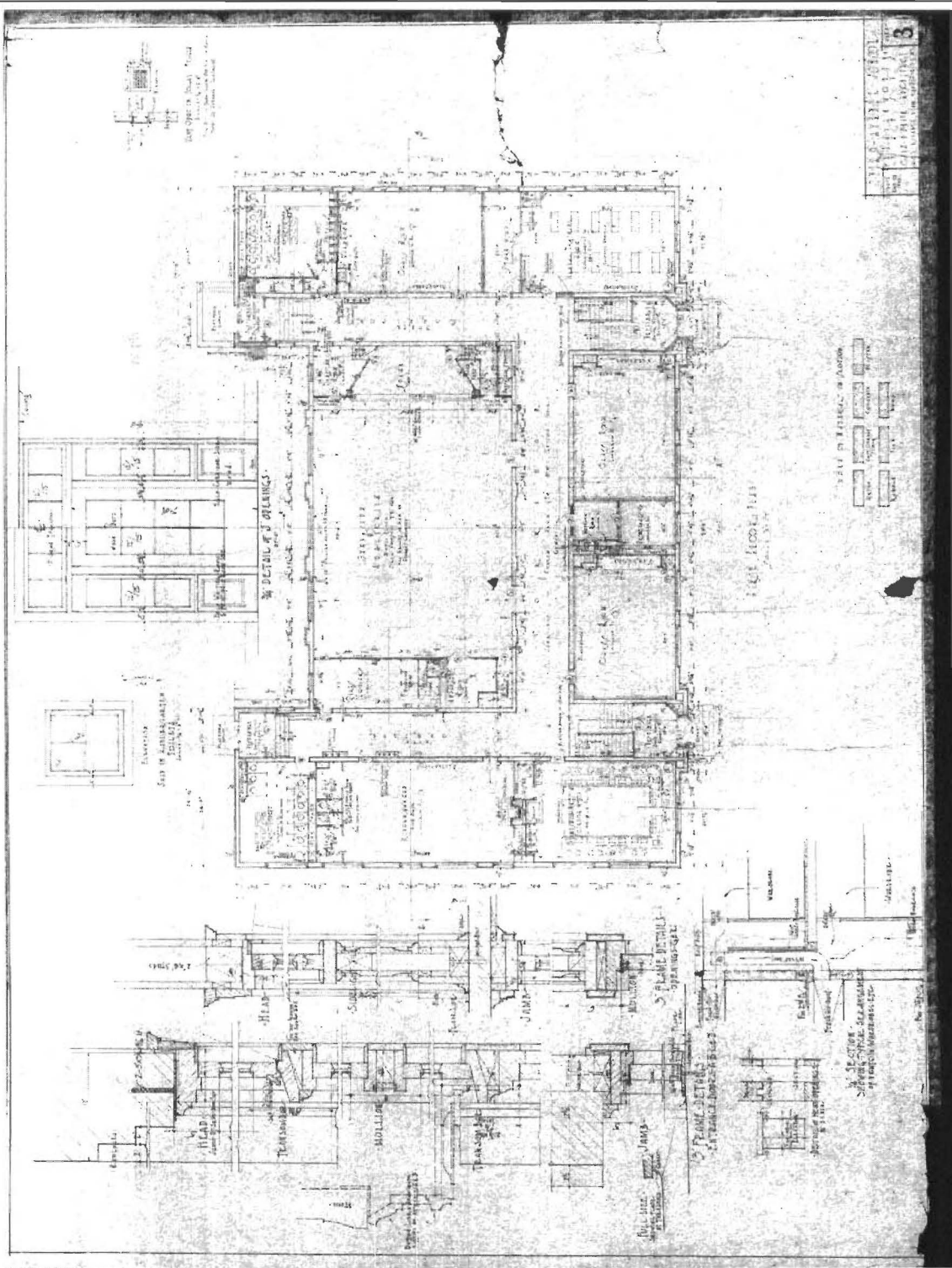
North Broadway School

Leavenworth County, Kansas
Historic Public Schools of Kansas
MPDF

Name of Property

County and State

Additional Documents:



Third Avenue School: Second Floor Plan
(Third Avenue and North Broadway Schools were designed by the same architect and are identical in plan and detail.)

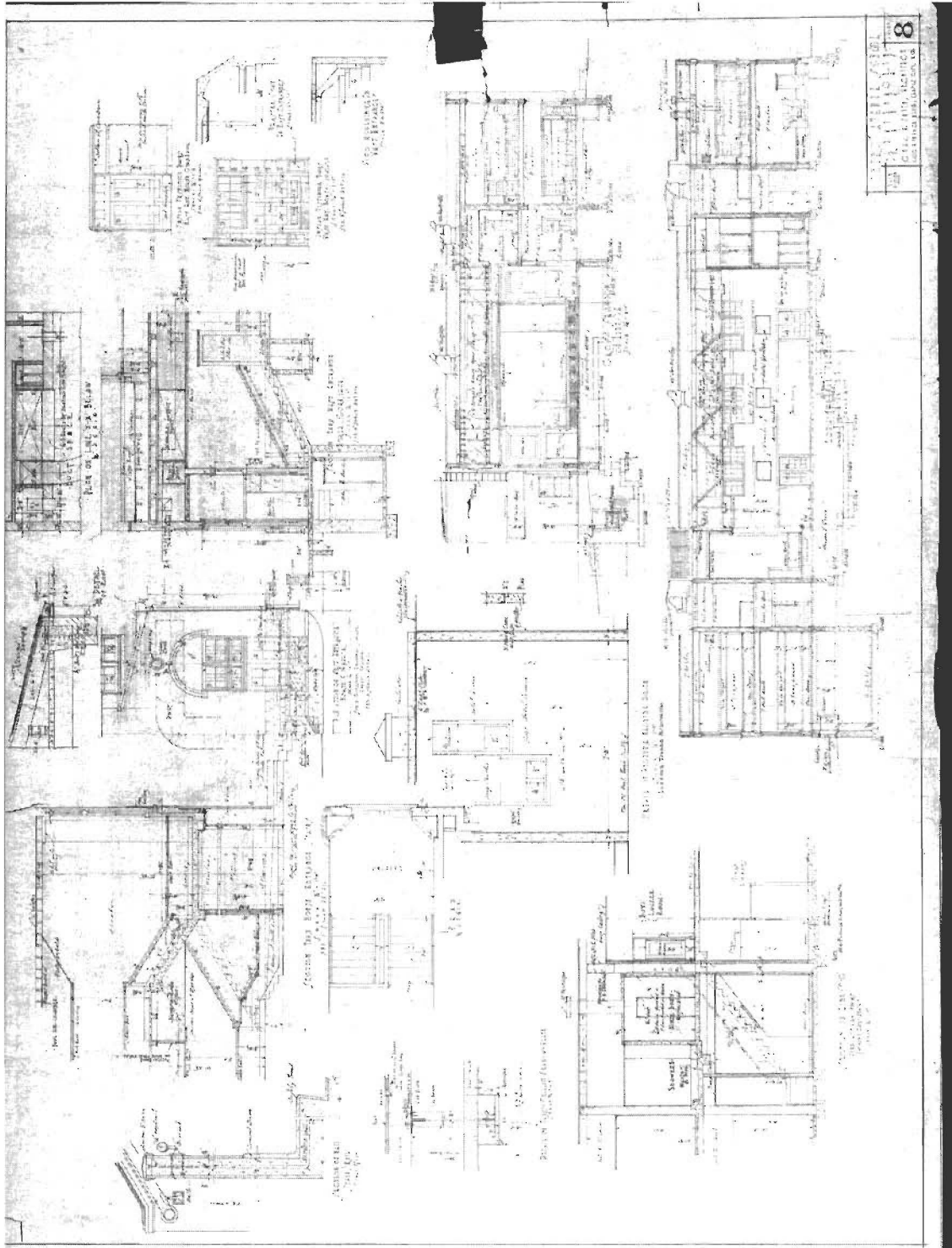
North Broadway School

Leavenworth County, Kansas
Historic Public Schools of Kansas
MPDF

Name of Property

County and State

Additional Documents:



Third Avenue School: Sections and Details

(Third Avenue and North Broadway Schools were designed by the same architect and are identical in plan and detail.)

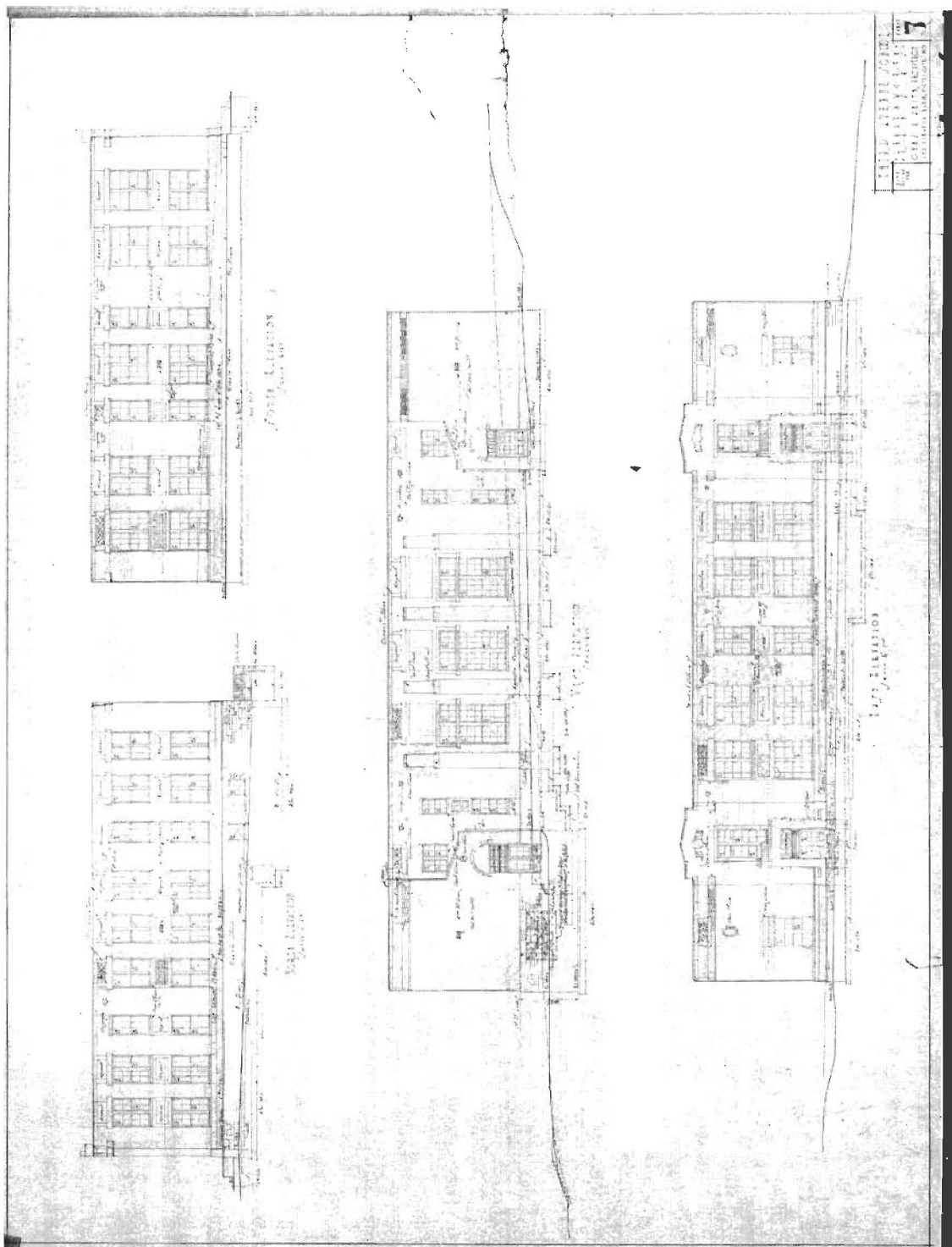
North Broadway School

Leavenworth County, Kansas
Historic Public Schools of Kansas
MPDF

Name of Property

County and State

Additional Documents:



Third Avenue School: Elevations

(Third Avenue and North Broadway Schools were designed by the same architect and are identical in plan and detail, with the exception of the cast stone ornamentation on the exterior elevations.)

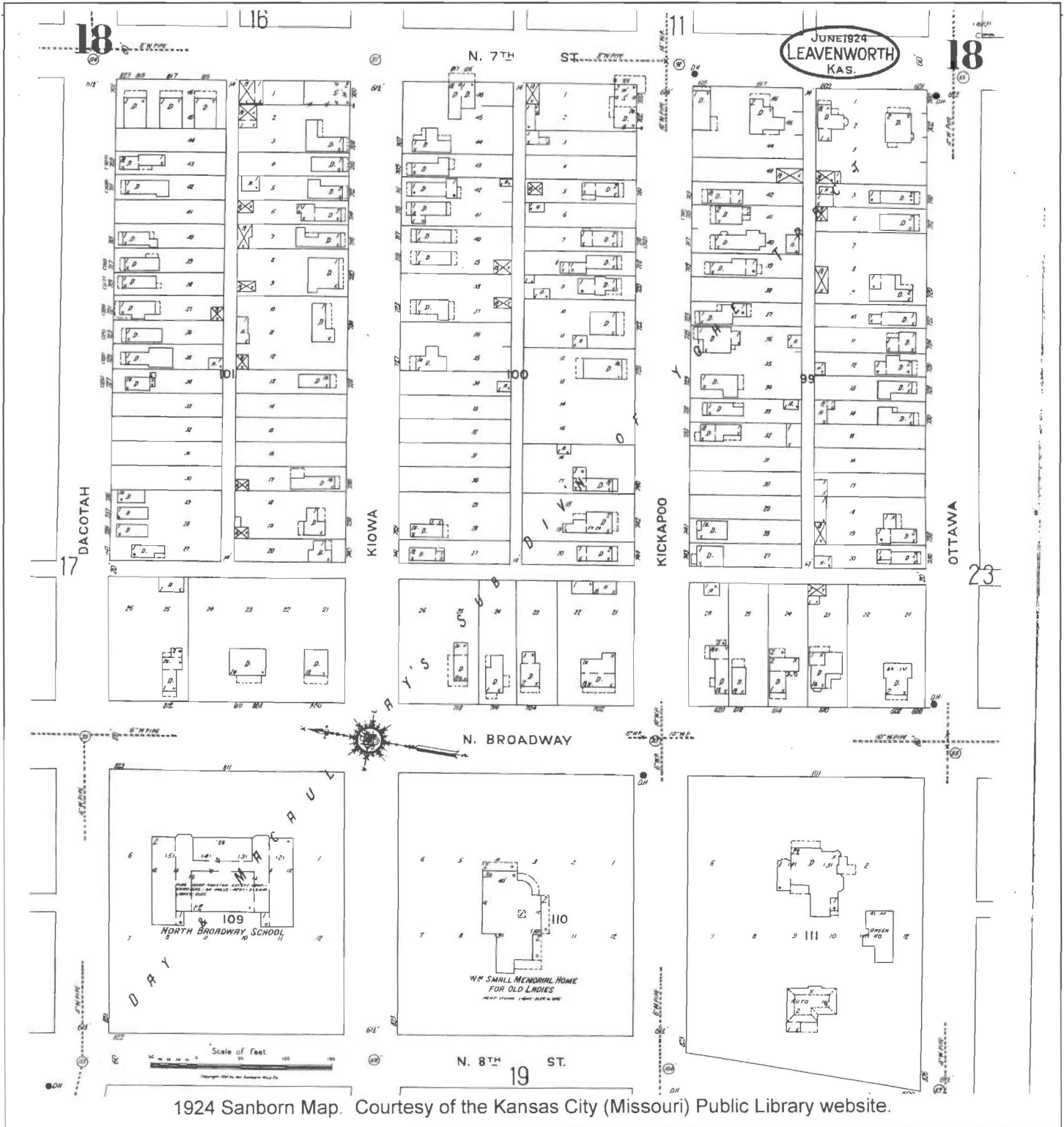
North Broadway School

Leavenworth County, Kansas
Historic Public Schools of Kansas
MPDF

Name of Property

County and State

Additional Documents:



1924 Sanborn Map. Courtesy of the Kansas City (Missouri) Public Library website.

North Broadway School

Leavenworth County, Kansas
Historic Public Schools of Kansas
MPDF

Name of Property

County and State

Property Owner:

(Complete this item at the request of the SHPO or FPO.)

name Duane Denny, LD Development, LLC

street & number 773 Seneca

telephone 913-290-0022

city or town Leavenworth

state KS

zip code 66048

Paperwork Reduction Act Statement: This information is being collected for applications to the National Register of Historic Places to nominate properties for listing or determine eligibility for listing, to list properties, and to amend existing listings. Response to this request is required to obtain a benefit in accordance with the National Historic Preservation Act, as amended (16 U.S.C. 460 et seq.).

Estimated Burden Statement: Public reporting burden for this form is estimated to average 18 hours per response including time for reviewing instructions, gathering and maintaining data, and completing and reviewing the form. Direct comments regarding this burden estimate or any aspect of this form to the Office of Planning and Performance Management, U.S. Dept. of the Interior, 1849 C. Street, NW, Washington, DC.

UNITED STATES DEPARTMENT OF THE INTERIOR
NATIONAL PARK SERVICE

NATIONAL REGISTER OF HISTORIC PLACES
EVALUATION/RETURN SHEET

REQUESTED ACTION: NOMINATION

PROPERTY North Broadway School
NAME:

MULTIPLE Public Schools of Kansas MPS
NAME:

STATE & COUNTY: KANSAS, Leavenworth

DATE RECEIVED: 8/26/11 DATE OF PENDING LIST: 9/21/11
DATE OF 16TH DAY: 10/06/11 DATE OF 45TH DAY: 10/11/11
DATE OF WEEKLY LIST:

REFERENCE NUMBER: 11000726

REASONS FOR REVIEW:

APPEAL: N DATA PROBLEM: N LANDSCAPE: N LESS THAN 50 YEARS: N
OTHER: N PDIL: N PERIOD: N PROGRAM UNAPPROVED: N
REQUEST: N SAMPLE: N SLR DRAFT: N NATIONAL: N

COMMENT WAIVER: N

ACCEPT RETURN REJECT 10.6.11 DATE

ABSTRACT/SUMMARY COMMENTS:

**Entered in
The National Register
of
Historic Places**

RECOM./CRITERIA _____

REVIEWER _____ DISCIPLINE _____

TELEPHONE _____ DATE _____

DOCUMENTATION see attached comments Y/N see attached SLR Y/N

If a nomination is returned to the nominating authority, the nomination is no longer under consideration by the NPS.











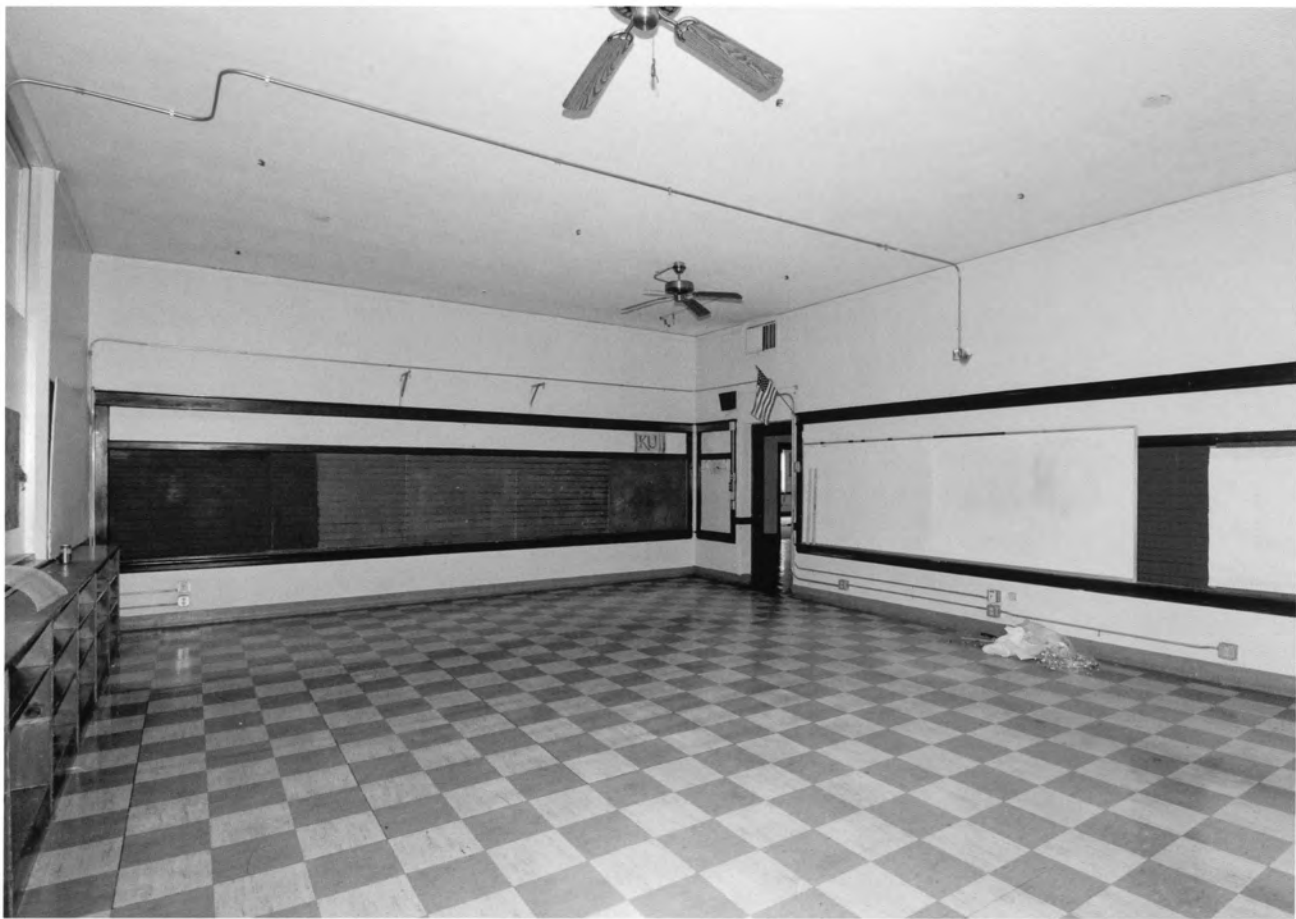




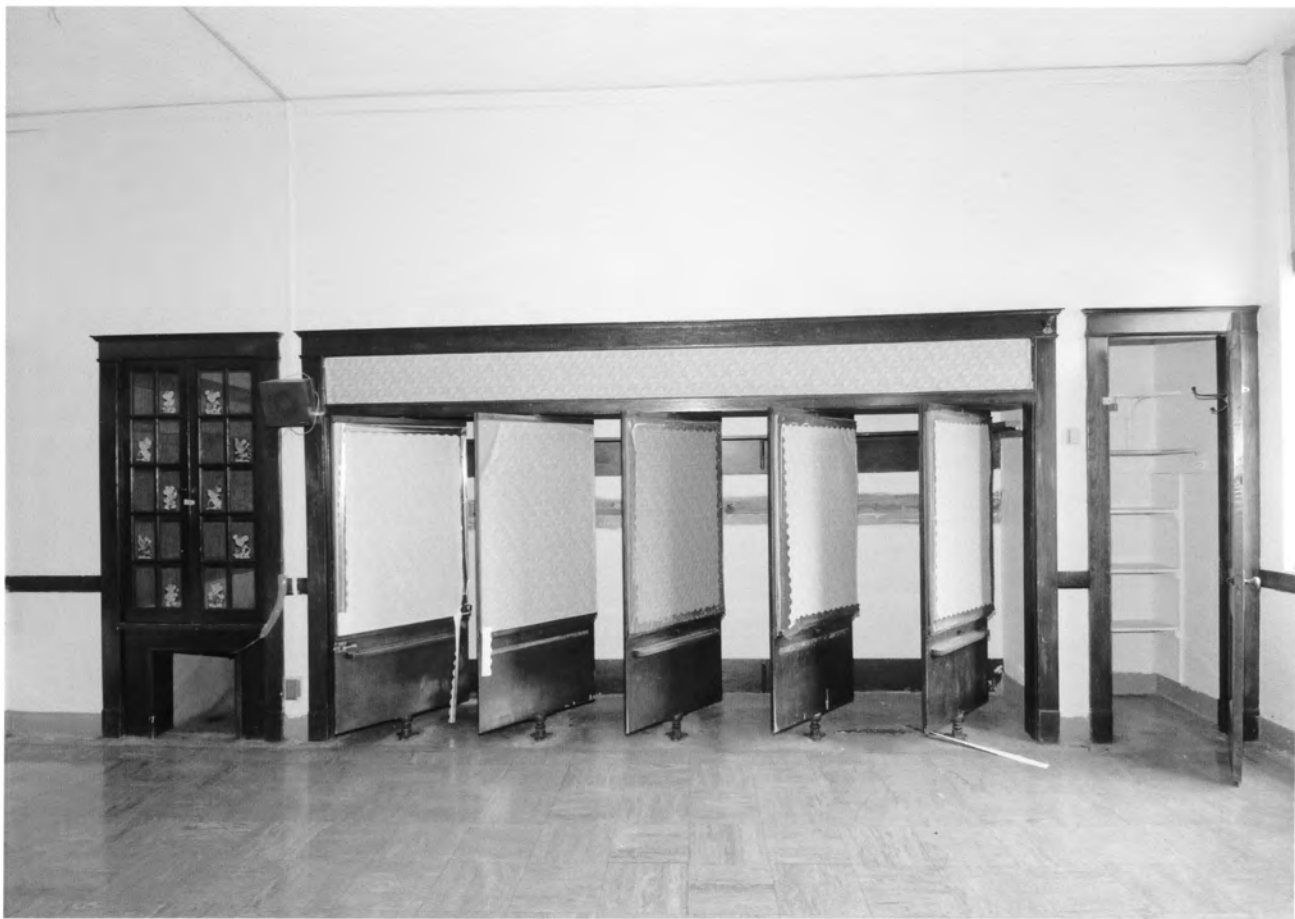
EXIT

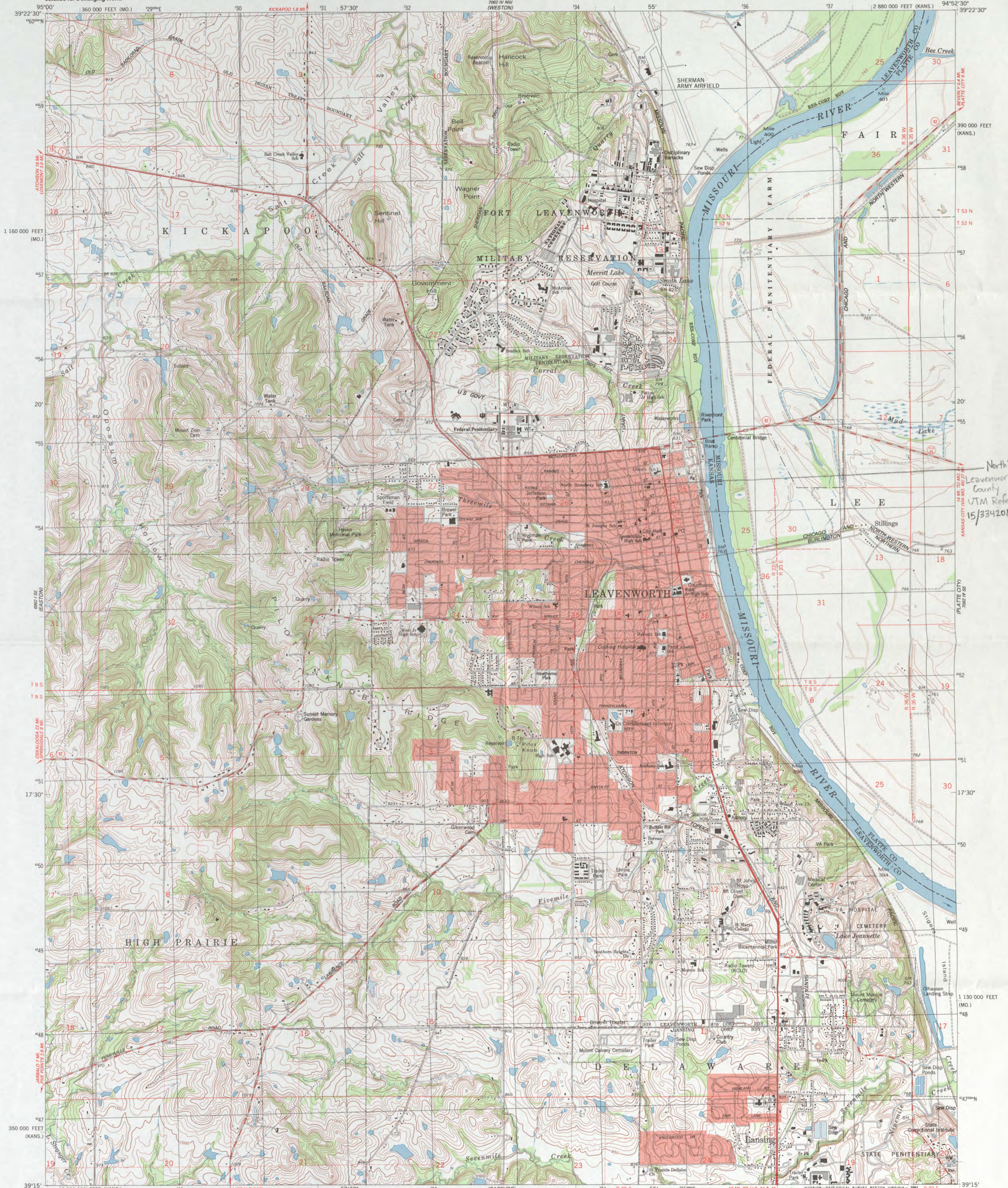






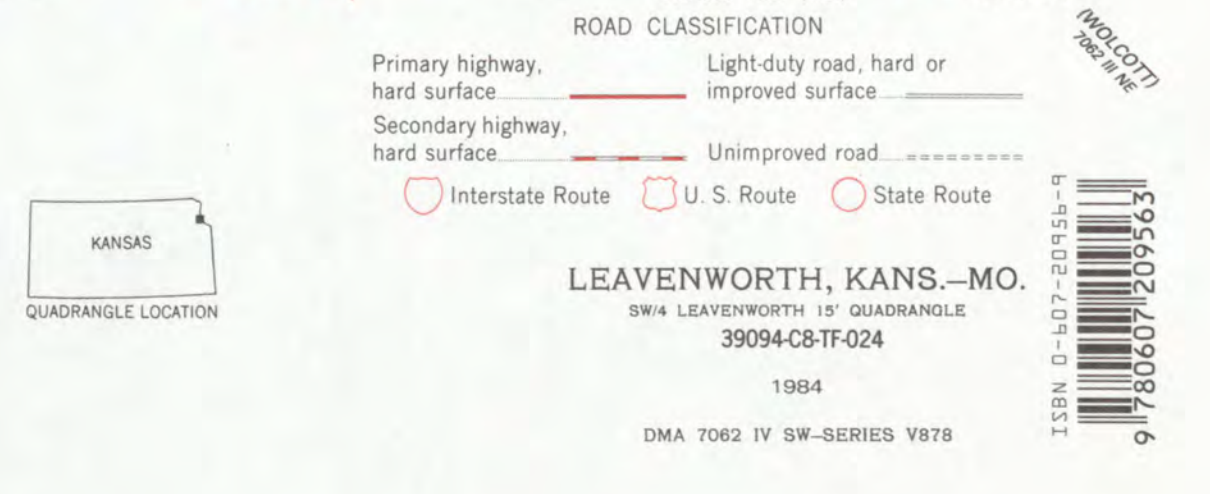
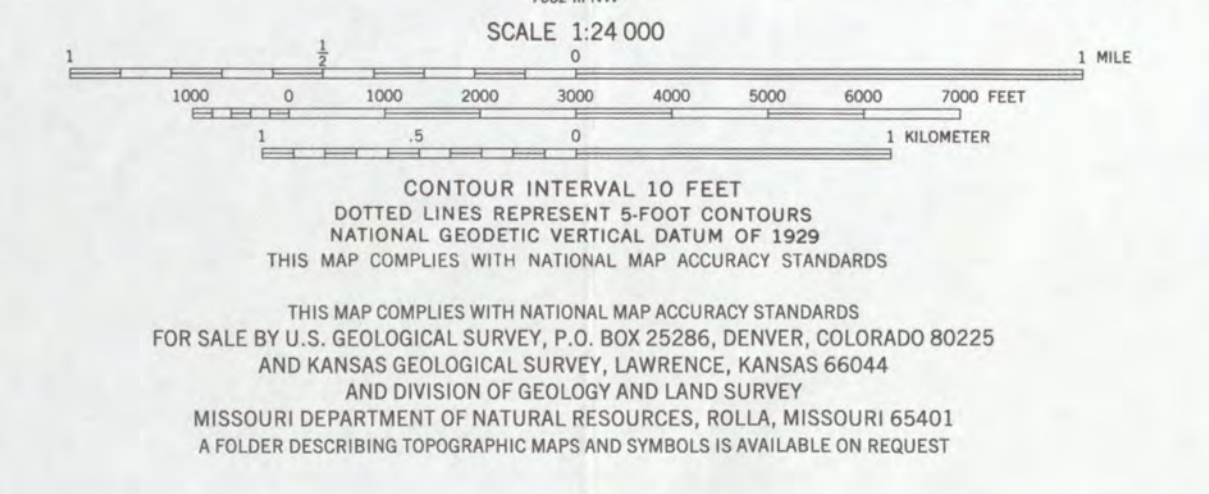
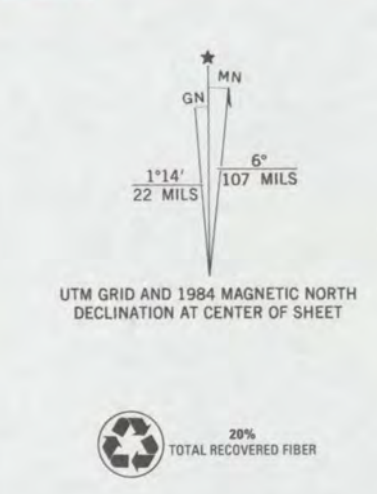






North Broadway School
Leavenworth, Leavenworth
County
UTM Reference:
15J334208/4354545

Mapped, edited, and published by the Geological Survey
Control by USGS and NOS/NOAA
Topography by photogrammetric methods from aerial photographs
taken 1982. Field checked 1983. Map edited 1984
Supersedes map dated 1975
Projection: Kansas coordinate system, north zone
(Lambert conformal conic)
10,000-foot grid ticks based on Kansas coordinate
system, north zone and Missouri coordinate system, west zone
1000-meter Universal Transverse Mercator grid, zone 15
1927 North American Datum
To place on the predicted North American Datum 1983,
move the projection lines 3 meters north and
21 meters east as shown by dashed corner ticks
There may be private inholdings within the boundaries of
the National or State reservations shown on this map
Red tint indicates areas in which only landmark buildings are shown
Fine red dashed lines indicate selected fence and field lines where
generally visible on aerial photographs. This information is unchecked



LEAVENWORTH, KANS.-MO.
SW4 LEAVENWORTH 15' QUADRANGLE
39094-C8-TF-024
1984
DMA 7062 IV SW-SERIES V878
ISBN 0-147-20954-9
9 780607 209549

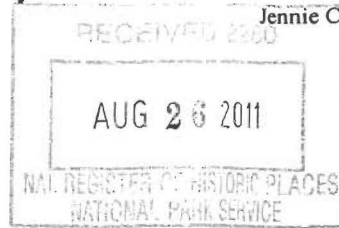
6425 SW 6th Avenue
Topeka, KS 66615



phone: 785-272-8681
fax: 785-272-8682
cultural_resources@kshs.org

Kansas Historical Society

Sam Brownback, Governor
Jennie Chinn, Executive Director



August 19, 2011

Carol Shull
National Register of Historic Places
National Park Service
1201 Eye Street, N. W.
8th Floor (MS 2280)
Washington, DC 20005

Dear Ms. Shull:

Please find enclosed the following National Register documents:

- North Broadway School – Leavenworth, Leavenworth County (new submission)
- Crosby House – Topeka, Shawnee County (new submission)
- 1927 Hillsboro Water Tower – Hillsboro, Marion County (new submission)

Please do not hesitate to contact me if you have any questions. I may be reached at 785-272-8681 ext. 216 or smartin@kshs.org.

Sincerely yours,

Sarah J. Martin
National Register Coordinator

Enclosures