

United States Department of the Interior
National Park Service

National Register of Historic Places Continuation Sheet

Name of Property

County and State

Name of multiple property listing (if applicable)

Section number _____ Page _____

SUPPLEMENTARY LISTING RECORD

NRIS Reference Number: 13001023

Date Listed: 12/31/2013

Property Name: Fall City Commercial Historic District

County: Richardson

State: NE

This property is listed in the National Register of Historic Places in accordance with the attached nomination documentation subject to the following exceptions, exclusions, or amendments, notwithstanding the National Park Service certification included in the nomination documentation.



Signature of the Keeper

1-02-2014

Date of Action

Amended Items in Nomination:

Section 8: Period of Significance

The Period of Significance for this district is hereby changed to "C. 1880 - 1961"

The beginning date coincides with the oldest extant buildings identified in the district.

The Nebraska State Historic Preservation Office was notified of this amendment.

DISTRIBUTION:

- National Register property file**
- Nominating Authority (without nomination attachment)**

NOV 15 2013

1023

National Register of Historic Places Registration Form

This form is for use in nominating or requesting determinations for individual properties and districts. See instructions in National Register Bulletin, *How to Complete the National Register of Historic Places Registration Form*. If any item does not apply to the property being documented, enter "N/A" for "not applicable." For functions, architectural classification, materials, and areas of significance, enter only categories and subcategories from the instructions.

1. Name of Property

Historic name Falls City Commercial Historic District

Other names/site number _____

Name of related multiple property listing N/A

(Enter "N/A" if property is not part of a multiple property listing)

2. Location

Street & Number multiple


City or town Falls City State Nebraska County Richardson

Not for publication Vicinity

3. State/Federal Agency Certification

As the designated authority under the National Historic Preservation Act, as amended, I hereby certify that this nomination request for determination of eligibility meets the documentation standards for registering properties in the National Register of Historic Places and meets the procedural and professional requirements set forth in 36 CFR Part 60. In my opinion, the property meets does not meet the National Register Criteria. I recommend that this property be considered significant at the following level(s) of significance: national statewide local

Applicable National Register Criteria: A B C D



SHPO/Director

10-24-2013

Signature of certifying official/Title:

Date

Nebraska State Historical Society

State or Federal agency/bureau or Tribal Government

In my opinion, the property meets does not meet the National Register criteria.

Signature of Commenting Official

Date

Title

State of Federal agency/bureau or Tribal Government

4. National Park Service Certification

I, hereby, certify that this property is:

- entered in the National Register.
- determined eligible for the National Register.
- determined not eligible for the National Register.
- removed from the National Register.
- other, (explain): _____



Signature of Keeper

12/31/2013

Date of Action

Falls City Commercial Historic District
Name of Property

Richardson County, Nebraska
County and State

5. Classification

Ownership of Property (Check as many boxes as apply)

- Private
- Public-local
- Public-state
- Public-federal

Category of Property (Check only **one** box)

- Building(s)
- District
- Site
- Structure
- Object

Number of Resources within Property (Do not include previously listed resources in the count.)

Contributing	Noncontributing	
62	13	Buildings
0	0	Sites
1	0	Structures
1	1	Objects
64	14	Total

Number of contributing resources previously listed in the National Register 2

6. Function or Use

Historic Functions (Enter categories from instructions.)

- Commerce/Service
- Commerce/Trade/Business
- Commerce/Trade/Financial Institution
- Recreation & Culture/Auditorium
- Social/Meeting Hall
- Government/Military
- Government/Local
- Recreation & Culture/Opera House
- Recreation & Culture/Movie Theater

Current Functions (Enter categories from instructions.)

- Commerce/Trade/Business
- Commerce/Trade/Specialty Store
- Commerce/Trade/Financial Institution
- Recreation & Culture/Auditorium
- Social/Meeting hall
- Government/Military
- Commerce/ Service

7. Description

Architectural Classification (Enter categories from instructions.)

- Late 19th & 20th Century Revivals
- Late 19th & Early 20th Century American Movements
- Mid-Century
- No Style

Materials (enter categories from instructions.)

Principal exterior materials of the property: Brick, stone, wood, clapboard, synthetic

Falls City Commercial Historic District

Richardson County, Nebraska

Name of Property

County and State

Description

Summary Paragraph (Briefly describe the general characteristics of the property, such as its location, type, style, method of construction, setting, size, and significant features. Indicate whether the property has historic integrity.)

The Falls City Commercial District is a collection of 75 commercial buildings in the central business district of Falls City, Nebraska. There are 62 contributing buildings, 1 contributing structure, and 13 non-contributing buildings. There are 2 objects within the district, 1 contributing and 1 non-contributing, which are both located on the lawn of the Richardson County Courthouse. Parking lots and pocket parks have been excluded from the resource count. The boundaries of the district encompass all of Stone Street from 15th to 19th Streets and extend a half block on either side to Chase (west) and Harlan (east) Streets. The west side of the 1800 block of Stone only extends to the alley. Also included are two blocks of Chase Street between 16th (bet 16th & 17th to the alley) and 18th Streets. Lastly, the district includes an industrial building (1900-1910 Stone), the Erath Building (120 W. 18th), three blocks extending from Stone Street to Towle Street between 17th & 18th Streets, and the block immediately north of Prichard Auditorium. The building styles of the Falls City Commercial Historic District are primarily of late 19th and early 20th Century Commercial design with some Mid-Century Modern. The downtown is unique, because its layout is composed of a traditional linear main street (Stone Street) and a courthouse square. Most of the buildings are of brick or stone construction with stone or concrete foundations. Parcels on Stone Street are typically 25x120 feet. Stone Street, and all of its side streets for half a block each way, retain the cobblestone brick pavers installed between 1910 and 1913.

Falls City is located in the southeast corner of Richardson County, Nebraska and serves as the county seat. Richardson County, in turn, is in the southeastern-most part of Nebraska and is bordered by Pawnee County on the west and Nemaha County on the north. The southern part of the county borders the state of Kansas. The economy is mostly based on agriculture with some manufacturing industries. As of 2010, the population of Falls City stood at 4,325 persons. It is within a two hour drive from the major metropolitan areas of Kansas City, Omaha, Lincoln and Topeka and is one hour from Nebraska City and St. Joseph. Highways 159, 75, 73, and 8 are the primary transportation lanes that provide access to the city. Named streets run from north to south, while numbered streets run from east to west. Alleys run from north to south and divide each block in half.

Narrative Description (Describe the historic and current physical appearance and condition of the property. Describe contributing and noncontributing resources if applicable.)

From the founding of Falls City to the early 1940s, the city took its shape. An evaluation of Sanborn fire insurance maps from 1885-1930 clearly depict the Falls City Commercial Historic District as the center of Falls City's civic, social, and commercial activity. Beginning with the 1885-1909 Sanborn Map, the side streets numbered starting with 1st (now 21st) and moving south with 2nd (20th), 3rd (19th), 4th (18th), 5th (17th), 6th (16th), 7th (15th), and 8th (14th) Streets. Chase Street showed few commercial operations and multiple dwellings, while both sides of Stone Street were filled with one to two story commercial buildings with residential space on the second floor. By 1916, the street numbers and addresses changed to that of the current numbering system, and a series of two story garages began to appear. A drastic reduction of harness, black smiths, liveries/stables, and wagon shops occurred at this time as well. Chase Street starts to contain a more diverse array of commercial structures, with a series of one story repair and service operations along the 1700 and 1600 blocks. By 1926, the trend continues for mechanics and garages popping up along Chase and Stone Streets, including the two-story, 140-car Morehead Garage/Car Dealership at 1900-1910 Stone.¹ In the 1930s, the National Guard Armory (1936) and Prichard Memorial Auditorium (1939) were constructed, and by 1941, the Falls City Commercial Historic District achieved its current form.²

¹ "Falls City January 1926." 1926 *Sanborn Fire Insurance Map*. Sanborn Map & Publishing Co. Limited (New York, 1926).

² "Falls City January 1926." 1926 *Sanborn Fire Insurance Map with Revisions in 1930, 1935, and 1941*. . Sanborn Map & Publishing Co. Limited (New York, 1926).

Falls City Commercial Historic District

Richardson County, Nebraska

Name of Property

County and State

Contributing Buildings: Sixty-two (62) contributing buildings are included within the boundaries of the Falls City Commercial Historic District. Each retains sufficient integrity and maintains a connection to the history and development of the district. In many instances, storefront alterations have taken place, such as in-filled transoms and updated storefronts, but for each contributing building with alterations, the upper stories of the building retain significant integrity and/or the alterations have gained significance over time. Each contributing property is listed below by an identification number (which is keyed to the district map), address, historic building name (when known) and/or current tenant, date of construction, and NeHRSI site number.

#1: 1820 Towle, National Guard Armory/Fire Department/and former City Hall (1972-2013), 1936 (Site #: RH03-375)

The Works Progress Administration erected this building for Company B of a Nebraska National Guard unit in 1936. The building is one and one-half story tall, features symmetrical design, and is constructed of Richardson County limestone. The rectangular building is of stone construction, has been painted white, takes up three-quarters of a city block, and is located just slightly west of the block's center. The primary façade on 19th Street features a recessed entry in the center with the words National Guard covered in white paint (not visible in photograph) above, four decorative columns/pilasters located on the corners of the facade and flanking the entryway and the walls extend into a curve.

#2: 312 W. 17th, Prichard Auditorium, 1939-40 (Site #: RH03-027)

This three story stone auditorium is built in the Art Deco style and was constructed as part of a WPA project. In 2000-2001, a \$1,500,000 remodel and modernization sensitively updated the structure, which sits prominently on the center of the block. The building's exterior is constructed of 2000 tons of native Richardson County limestone. The primary (south) façade of this rectangular building features a projecting entryway with three modern double doors, each with a transom. The entry is distinguished from the rest of the building by its smooth stone surface. Four columns/pilasters accent the entry, which is divided into three bays. Above each door, simple relief panels adorn the façade; the center panel is engraved, "Leander and Laura L. Prichard Memorial Auditorium." The entry is topped with a small 2/2 fixed pane window in each bay with a decorative frieze above. With the exception of the entryway, the entire building is clad in rough-cut stone. A very modest pediment makes up the cornice of the main façade, while a limestone cornice wraps around the entire auditorium. Simple vertical windows punctuate the building's main façade, two on each side of the entry. Nearly identical, the east and west façades are virtually symmetrical and feature a row of ten windows, each with a 12-lite transom, flanked by entryways, which are topped with the same 12-lite transoms. With the exception of the main façade, a limestone water table extends around the entire building.

#4: 1707 Chase, Country Cable/Dish, c. 1920 (Site #: RH03-413)

This one story brick commercial building houses the Country Cable/Dish shop. Its storefront is comprised of a centrally-placed single entry with a covered transom flanked by a large single pane window to the south and a smaller opening to the north. The northern space likely held the same window configuration as the space to the south, but it has since been covered in wooden paneling. Above the storefront, two lines of end-laid bricks add decoration to the building.

#5: 1705 Chase, Meyer Home Center, c. 1920 (Site #: RH03-412)

Rising slightly higher than 1707 Chase, this one story brick building has a storefront composed of a double entry on the southern end with three large single-pane windows to the north. The transom has been covered. Two vented windows punctuate the northern side above the transom, while simple brick work and a stone cornice cap the building.

#6: 1701-1703 Chase, Jim Hill's Paint and Glass Service Center and Warehouse, c. 1920 (Site #: RH03-455)

This two story brick commercial garage building has facades that face both 17th and Chase Streets. The primary façade fronts on Chase Street and is divided into four bays. The three southern bays contain a centrally-placed double door entry flanked by sidelights. The bays on either side each consist of three vertical single pane windows. The bulkheads and transoms of all three bays contain white panels. The fourth (north) bay contains a modern garage door in the original opening. The second story features four sets of three paired rectangular replacement windows with diving mullions. Centrally-placed wood panels add a decorative element to each window, with "1701" and "Chase" engraved on the middle two panels. The middle two bays extend into a pediment shaped parapet, and simple brick detailing comprises the cornice around the structure. The main level façade along 17th Street has (from west to east) three square windows, a loading dock, a garage/service door opening, a single door entry, and two sets of windows similar to those of the Chase Street

Falls City Commercial Historic District

Richardson County, Nebraska

Name of Property

County and State

façade. The upper level contains the same brick detailing as the other façade and eight evenly spaced windows with brick sills.

#7: 1619-1623 Chase, Jim Hill's Paint Galls Wallpaper Retail Center, c. 1920 (Site #: RH03-245)

This one story brick commercial retail building is comprised of two bays, each with a central entry flanked by storefront windows. The transom is exposed on the northern half of the building. A clay tile mansard roof and metal canopy extend across the entire length of the building.

#9 & #10: 1615 & 1613 Chase, Joy's Machine Shop and Farmer's Repair & Machine Shop, c. 1920 (Site #: RH03-454 & RH03-244)

These two one story brick commercial buildings house Joy's Machine Shop and Farmer's Repair & Machine Shop respectively. While being different colors of brick, they are virtually mirror images of one another. 1613 Chase has a modern storefront with recessed entry on the south and a garage door on the north. 1615 Chase has a garage door on the south and an original storefront with recessed entry on the north. Each building has simple brick detailing in the cornice and a central raised parapet.

#11 & #12: 1611 & 1609 Chase, Vacant, c. 1920 (Site #: RH03-453 & RH03-452)

These two one story brick commercial buildings are currently vacant. Each has a garage door on the southern end of the façade and original entry and storefront windows with transom on the northern end. Simple brick details comprise the cornice of each.

#13: 1605-1607 Chase, Jones Air Conditioning, c. 1920 (Site #: RH03-451)

This one story commercial building is clad in multi-colored brick. The storefront is comprised (from south to north) of a three pane display window, a modern entry door with covered transom, a period garage door with covered transom, and a two pane display window. The most notable decorative element is a slightly recessed section in a different colored brick situated below the roofline.

#14: 120 W. 18th, Erath Building, c. 1900 (Site #: RH03-378)

This one story brick commercial building has a storefront comprised of a single entry and two large window openings, one of which has been in-filled with three 1/1 windows. A stone engraved with "Erath Building" rests above the covered transom and below the cornice of simple brick detailing.

#15: 114-118 W. 17th, Vacant, c. 1925 (Site #: RH03-415)

This one story, multi-bay brick commercial building serves as office and retail space and has simple brick detailing. The building has four bays with the western-most having a canvas awning over a modern storefront with, from west to east, two display windows and an entry. Moving east, the second bay has two display windows flanking a central entry-way, and the two eastern-most bays both have a large display window. The transom above each bay is covered. The roof has a simple parapet. Below the parapet is a brick string course and slightly recessed sign panels. The façade running along Chase street, from south to north, features two large covered rectangular window openings, a thin rectangular single-pane window, a garage service entry, and three rectangular 6/6 windows.

#17: 116-120 W. 16th, Vacant, c. 1900 (Site #: RH03-449)

This one story brick structure served as office space and has simple brick detailing divided over three bays. Two large glass storefront windows flank a central entryway and another window, which has been covered. The transom above each bay has been covered.

#18: 110-114 W. 16th, Vacant, c. 1900 (Site #: RH03-450)

This one story brick structure served as a garage and features four bays and simple brick details. From left to right, the building features a garage service door, a large square storefront window with covered transom above, an entryway with glass transom above and rectangular window on the right and a garage entry.

Falls City Commercial Historic District

Richardson County, Nebraska

Name of Property

County and State

#20: 1823 Stone, Blue Collar Auto (former filling station), c. 1925 (Site #: RH03-465)

This property is set back from the street with a parking area in front, which once featured gas pumps and a one story brick commercial structure that served as the general merchandise and office building. The brick building has been painted white and features two garage service doors on the south and an entry door and window on the north.

#21: 1819-1821 Stone, The Would Eye Bar, c. 1925 (Site #: RH03-428)

This one story brick commercial structure features two bays with a metal canopy attached below the covered transom windows. The first bay features two long horizontal windows with a single door entrance flanking it on the north. The second bay features a recessed entryway. The structure, which has been painted red, features a simple brick cornice.

#22: 1813, 1815, 1817 Stone, Vacant c. 1925 (Site #: RH03-427)

Comprised of three separate storefronts, this building is a one story brick commercial structure. Continuity of each façade is achieved by a simple brick cornice and a brick stringcourse above each transom. The storefronts are divided by brick piers. 1813 Stone has a glass storefront, covered transom window, and recessed entry on the north end. 1815 Stone has been painted blue, has one entryway on the south end, and a long rectangular display window with paneling above and below. The transom window has also been covered by the same paneling. The building also has a modern metal canopy projecting from and attached to the façade. 1817 Stone is currently vacant and features a recessed entry on the south side and a single horizontal display window with wood cladding around it. The building has been painted white, has a simple cornice, a covered transom, and a metal canopy.

#23: 1805-1811 Stone, the Buggy Wash, Ink Addiction, and vacant (former Eddie Motors Building), c. 1925 (Site #: RH03-426)

This one story brick commercial building once served as an auto repair and service shop. It features, from south to north, a garage opening, modern single entry with display window and exposed transoms, a traditional storefront with recessed entry and covered transom, display windows with covered transom, a second garage opening, and a modern single entry with display windows and covered transoms. The northern end of the building (1811 Stone) features a curved parapet.

#24: 1801-1803 Stone, Southeast Nebraska Insurance Agency/Takes Two Bridal (former Montgomery Ward), 1928 (Site #: RH03-218 & RH03-425)

This two story brick commercial building formerly served as a Montgomery Ward department store. It is built on the former site of the Union House Hotel. The ground level features a glass storefront with a central recessed double entryway. The transom has been covered by vertically aligned sheets of metal. The upper story features three bays with three rectangular windows with 1/1 side lights and four transom lights above. The bays are divided by brick pilasters. The building has a decorative brick cornice and central parapet featuring a rectangular stone engraved "1928." The secondary façade fronts onto 18th Street and features four small rectangular windows covered with metal strips and a display window with covered transom at the eastern end. Above the display window on the south side, there is a recessed brick panel. The second story of this façade features a string of five rectangular windows of the same configuration as the primary façade. The eastern-most window on the upper story has a decorative brick cornice above. All of the upper story windows are enclosed from inside the building by metal sheeting. A small retail store, Rogers Shoe Store, is located in the north end of the building.

#27: 1719 Stone, Weaver & Merz Law Office, 1910 (Site #: RH03-422)

This one story brick and stone commercial building features a modern brick storefront with two small horizontal windows flanking a single central entryway. The top third of the building retains integrity with its corbelled cornice.

#28: 1717 Stone, Bartek Chiropractic/Cedar Hollow Foods, c. 1910 (Site #: RH03-219)

This one story brick commercial building features a modern glass storefront with one entry on the southern end and another in the center, which is flanked by five vertical display windows. The transom is covered with metal panels separated by mullions and contains a sign bearing the words "Bartek Chiropractic Clinic" in the center. Above the transom is a series of decorative colored square tiles with floral, shield, and other designs. Just below a simple stone cornice is a slightly recessed brick panel.

Falls City Commercial Historic District

Richardson County, Nebraska

Name of Property

County and State

#29: 1715 Stone, Norma's Antique Mall, c. 1925 (Site #: RH03-421)

This one story brick commercial building once served as a J.C. Penny's Store and the former River Theater. The storefront is clad in blue tiles and features three bays, with the southern two bays each having two rectangular display windows and the northern bay having a double door entryway on the left and three display windows to the north. Above the windows and entry, the transom, covered by metal sheets, contains three small modern rectangular windows with central mullion. The cornice features a pediment in the center, stone vase finials at each corner, and three framed brick panels with stone square corners.

#30: 1713 Stone, Schulenberg Bakery, c. 1915 (Site #: RH03-419)

This two story brick commercial building features a storefront on the lower level with a central opening flanked by two sets of paired glass windows, with black metal panels above and below, and a covered transom. A stairway entrance with a two-section transom window is located at the north end of the building. The transoms have a flat brick arch above. In the middle is a sign projecting from the building with the word "Bakery" on both sides. On the second story, there are two prominent square window openings covered by vertically arranged metal sheets. Each has a stone sill and a flat brick arch above. The corners of each arch feature decorative squares, while a decorative diamond rests above each flat arch. Above this, a frieze contains two stone stringcourses with the same decorative squares as below nestled between the two courses. Just below the simple stone cornice, is a slightly recessed brick panel where a sign for a business was once located.

#31: 1709 Stone, CRT (Custom Response Teleservices, Inc.), c. 1880 (Site #: RH03-161)

This two story brick commercial building features a glass storefront with south entryway and fabric awning bearing "CRT Custom Response Teleservices, Inc." The second story features a set of three rectangular windows with one larger central panel flanked by two 1/1 smaller ones. There is a white decorative brick stringcourse and decorative cornice at the roofline.

#32: 1707 Stone, Alternative School, c. 1880 (Site #: RH03-418)

This two story brick commercial building is currently being used by the Falls City Public Schools as an alternative school. The first story features a glass storefront with recessed central entry and decorative tiles under the recessed section. The stairway entrance with access to the upper stories is located on the south end. A canvas awning projects from the building and covers a transom window. The upper story features a set of three rectangular windows with thin stone sills and decorative pediment lintels that are reminiscent of the Italianate or Greek revival styles. The cornice and roofline consists of a decorative brick entablature with rough brick and smooth brick. A decorative string course frieze with decorative pretzel-like swirls is the most unique aspect worth noting.

#33: 1705 Stone, Main Street Falls City/Falls City Area Chamber/Falls City Edge, c. 1880 (Site #: RH03-068)

This two story brick commercial building features a storefront with central recessed entryway and metal canopy projecting from the building. Above the canopy is a covered transom window. The second story features a patinated bronze oriel window with large 1/1 window with transom, flanked by a 1/1 thin rectangular windows with transom on each side. To the north of this oriel window is a rectangular 1/1 window with transom and stone pediment lintel. The cornice and roof line features a decorative brick entablature.

#34: 1701-1703 Stone, F&M Bank, 1894-95(Site #: RH03-414)

This three story brick bank building is very prominent at the corner of 17th and Stone. Built as the Falls City State Bank in 1894-95, this building originally housed the bank on the south half with a hardware store and later grocer on the north. Between 1950 and 1970, the building was remodeled by enclosing the storefront and central staircase leading to the upper two stories and adding an awning that covers the Corinthian capitals and the words "Fist National Bank" in the stone above the corner turret's columns. A prominent turret/tower on the corner of the building originally had a conical slate roof (removed sometime prior to 1946) and features four columns at the base. The fenestration on the first story of the 17th Street façade consists of a series of recessed arched windows with brick arches above and decorative lights on either side of each window. The fenestration on the upper two stories consists of a series of rectangular windows with half being glass and the other decorative panels with course stone lintels and smooth stone sills. The primary façade along Stone Street continues this pattern on the upper two stories. The turret/tower of the building is faced with rough brick and a series of three rectangular windows on all three levels with stone sills, rough stone lintels and decorative wood panels above each

Falls City Commercial Historic District

Richardson County, Nebraska

Name of Property

County and State

window. On the third story, the windows have decorative entablatures that feature stone rectangles with recessed brick reliefs. Just before the end of the primary façade, is a pair of rectangular windows separated by a brick mullion and a decorative entablature above with stone brackets on both sides, and flat brick frieze in the middle. Extending from the middle of the building is a projecting sign with "First National Bank & Trust" and digital temperature and time display below. The Falls City State Bank (FNB as of 1941) building, according to the 1900, 1909, and 1916 *Sanborns*, housed a hardware store on the first floor at 1703 Stone.

#37: 1617 Stone, Memory Lane Décor, c. 1910 (Site #: RH03-220)

This two story brick commercial structure is an identical aesthetic continuation of 1613-15 Stone. The lower level features a plate glass storefront with central entrance. The upper story features three windows with one large window in the center, flanked by two smaller rectangular openings. The cornice is at the same level and appearance as that of 1613-1615 Stone and features three stone diamonds in the parapet.

#38: 1615 Stone, Brown's Shoe Fit Co, 1930 (Site #: RH03-220)

This three bay, tan brick building stands two stories tall. The first floor features a glass storefront that extends over two bays with a recessed double door entry on the north end. The transom window is covered, and a canvas awning projects from above. The upper story features three bays with fenestration consisting of six rectangular windows. Each window is capped by a three-piece flat-arched lintels with prominent center keystones and rests on a stone sill string course extending the width of the building. Two brick rectangular pilasters separate each bay on the second story, which gives them a recessed appearance. The window openings are all covered with vertical metal strips. A frieze with a decorative brick pattern tops each window. The roofline features a cornice with stone details and central pediment. In the center of the pediment is a stone bearing "1930," and there are three decorative stone diamonds on either side.

#40: 1611 Stone, Flair Boutique, c. 1880 (Site #: RH03-440)

This two story brick commercial building features a glass storefront with entrance on the north end, covered transom window, and canvas awning. Above the awning are several rows of brick that are a lighter color than those above it. The upper story features three window openings with a stone stringcourse that spans the width of the building under the windows. A paired rectangular window opening is flanked by two individual rectangular openings on either side. The window openings are covered with white panels featuring a rectangular design with a diamond in the middle. Each window also features a flat brick arch. Above these windows, toward the stone cornice, is a stone entablature that spans the building.

#41: 1609 Stone, Flair Boutique, c. 1880 (Site #: RH03-072)

This two story, brick commercial structure has a storefront on the first story with a covered transom window, canvas awning, and entrance door on the south end. The upper story features two distinct recessed bays with window openings. The windows are paired rectangular windows with stone sills and decorative white window hoods. Above the windows are a series of brick corbels in the recessed portion and a second decorative brick entablature with decorative rough brick frieze divided into a series of squares.

#43: 1605 Stone, Hometown Floral, c. 1884 (Site #: RH03-441)

This two story, commercial brick building features a plate glass storefront with recessed central door on the first story and a canvas awning over a transom. The second story features a small horizontal section of vinyl siding below a large rectangular window, which has been enclosed with white shutters. The window has a brick, flat arched lintel. The majority of the second story is slightly recessed to just below the cornice line, near the top of the recessed section is a soldiered brick string course.

#44: 1601-1603 Stone, Dorrington & Sons Building/Falter Store, 1881 (Site #: RH03-442)

Built in 1881, this two story brick commercial building with a symmetrical facade features two traditional storefronts with recessed entries. Canvas awnings project from the building above the transom windows. There are two upper stairway entrances leading to the second story. The south storefront is currently vacant, but formerly housed the Falter clothing store from 1916 to 1999 and Northridge Church for a few years. The upper story features three window openings that include two large rectangular windows flanking a much smaller window in the middle. Each has a stone sill and decorative

Falls City Commercial Historic District

Richardson County, Nebraska

Name of Property

County and State

panels on the side windows and in the center opening. The panel above the south window depicts "Falter's" in individual white letters, while the north window panel has a Great China Buffet sign for the restaurant that occupies the north storefront. Above the central window is a rectangular stone panel with "1929" in red letters, and above that is a round stone engraved with "Dorrington & Sons, 1881" with soldiered stone bricks around it. On either side of the round stone, and above the two outside windows, is a decorative brick frieze with a soldiered stone string course underneath three rows of soldiered brick coursing. The cornice contains a simple strip of metal. The building also possesses a façade that fronts on 16th Street. The first story features five small windows with stone sills with decorative panel covering. The second story features a series of eight arched windows and one rectangular window. Each has stone sills and decorative wood panels covering the openings. In addition, at the rear of the building, is a two story section with a central entry door flanked by two large display windows. A second entry door is located on the western end of the addition, while a small arched-top window is located on the eastern end. The second story contains three arched-top windows, all enclosed with decorative panels. The cornice is comprised of corbelled brick.

#45: 1523 Stone, Ryan Building (Chaney's Furniture), c. 1884 (Site #: RH03-221)

This two story brick commercial building has had various retail stores housed in it, but currently serves as the home of part of Chaney's Furniture Co.³ The building consists of two bays with the retail level featuring large display windows and a recessed entry. A metal canopy sits below a transom with modern glass. Both extend across the entire façade. The second story features two large rectangular windows that have been closed off with metal sheeting, and a stone string course cornice with corbelled bricks underneath. Above the cornice, the wall forms a triangular parapet with the words "RYAN BLDG" engraved on a rectangular stone. The second story of the façade facing onto 16th Street features a series of seven arched windows with stone keystones. On the northern corner, just above the transom, is a rectangular sign, labeled "Chaney's Furniture" that extends around the corner.

#46: 1519 Stone, Gehling Opera House and Theater (True Value Hardware), 1892-1893. Architect: M. N. Blair of Falls City, NE. Builder: Charles H. Herman. NRHP listed in 1988. (Site #: RH03-076)

This property was previously listed in the National Register of Historic Places, having been nominated in 1988 as part of a series of nominations for Opera House Buildings in Nebraska 1867-1917. The building stands three stories tall, is of brick construction, and features a two-part commercial block structure. The building is approximately 52 x 110 feet and features an:

"ornamental façade [that] includes windows decorated with brick arches, stone ledges above windows, stone turrets topped with miniature onion domes, an elaborate cornice, and "1892" and "GEHLING" set into the top in stone. Original public access to the second-floor theatre was in the northeast corner of the building, but it has since been closed off due to modifications made to the lower floor retail space."⁴

The current entrance to the second and third floor is via a narrow staircase at the back of the building. On the second story, the foyer and box office are still in place as well as several rooms on the third floor with balcony access. The building also features a large auditorium with balcony and a proscenium arch that measures 25 by 24 feet and fills the entire north part of the auditorium. The street level façade has been remodeled to include the addition of a mansard roof, wood paneling and plate glass storefront. The building originally had a furniture store and bakery/lounge on the first floor, at one time served as Western Auto, and now serves as a hardware store. Despite these alterations, the building retains its historical and structural integrity.

#47: 1517 Stone, McCarthy Building (Oil City Theater/Kawres/Natural Beauty Photography), c. 1941 (Site #: RH03-461)

This three story structure opened as the Oil City Theater in 1941 under the ownership of Oscar C. Johnson. The structure has brick side walls, a flat roof, and the front façade has a curved top. The façade features a glass storefront with entry and covered transom. The second story features four windows with two on the sides having nine lites, and the two middle windows having 18 lites. The third story has two windows with nine lites separated by a central mullion. A metal canopy is

³ Harold C. Prichard. "The Hundred Year History of Falls City." *The Falls City Journal*. Monday, August 26, 1857. Section A, pg. 4. Accessed May 6, 2013 at Falls City Library & Arts Center, 1400 Stone Street, Falls City, NE 68355.

⁴ Dr. Layne Elyers. OHIBN Study. "Gehling Theater." *Opera House Buildings in Nebraska 1867-1918*. 1988 National Register of Historic Places Nomination.

Falls City Commercial Historic District

Richardson County, Nebraska

Name of Property

County and State

attached via metal bars just below the transom level. The building maintains its historic look and feel as a movie theater, but lacks the Oil City sign and marquee.

#48: 1503-1505 Stone, vacant and Bill's Used Furniture, c. 1961 (Site #: RH03-445)

This one story commercial structure features two glass storefronts and a canvas awning that stretches across the entire main facade. The southern half of the building is vacant, while the other serves as a used furniture and pawn shop. The storefront of each bay angles inward towards a single door with transom. The southern storefront features three display windows, while the northern storefront features five display windows. This brick building has been painted tan.

#49: 1501 Stone, F&M Bank Drive-Thru, 1961 (Site #: RH03-444)

This tan brick building is one story tall with a flat roof and is used as a drive-thru bank. The building consists of an entry with transom on Stone Street, a drive-up window on the northern facade, a small window on the western facade, and three windows with brick sills and a door on the southern facade. The southern facade is the most interesting with seven vertical sections of decorative brick, a row of six flat metal diamonds along the roof, and a roof sign that displays "F&M Bank Drive Thru." The actual drive-thru is to the north of the small building and is entirely covered by a metal roof.

#50: 1900-1910 Stone, former Morehead Garage, 1915 (Site #: RH03-265)

This two story brick industrial/commercial building features five bays on the primary facade (Stone Street) and six on the secondary facade (19th Street). Each bay is delineated by brick pilasters that rise above the roofline and are accentuated with a central panel of white painted brick. The building's cornice is a simple stone stringcourse. The ground level of the primary facade consists of, from north to south, a display window and transom covered with plywood sheeting, a garage service door with exposed transom, a display window with covered transom, entryway with three display windows with covered transoms, and four display windows with covered transom. The upper story fenestration of each bay contains a set of three multi-lite windows with louvered centers. Each series of windows rests on a continuous stone sill. The same white painted brick accents from the pilasters is carried over onto sign panels above and below each window. The facade facing 18th street is of similar design with a door at the west corner and a garage/service door in the center. The fenestration and detailing is nearly identical to that of the primary facade.

#51: 1820 (1818-1822) Stone, Falls City Auto Supply, 1923 (Site #: RH03-430)

This one story brick commercial building was erected in 1923 as an auto service and parts store. It features three bays separated by pilasters, which reach above the roofline. The modern storefront is capped by a metal canopy and covered transoms. The center bay is slightly higher than the other two and features "Falls City Auto Supply" in the sign panel.

#52: 1816, 1814, 1812 Stone, Time Warner Cable and former Rivoli Theater, c. 1923 (Site #: RH03-429 & RH03-217)

This one story brick commercial building is divided into three distinct bays, each with a different address. 1816 Stone has a covered transom and metal canopy above a traditional storefront consisting of display windows and a recessed central entrance. The building also features simple tan brick details, which is in contrast to the dark red facing brick. 1812 and 1814 Stone are faced in tan brick and formerly served as a movie theater. The theater retains its poster boxes on the corners and between each of its two bays. Each bay has transom windows that are covered with metal or vinyl sheeting. The marquee has since been removed. The bay of 1814 is recessed and has two plate glass doors flanking a central rectangular window. The upper story features a parapet that is reminiscent of the Mission style. Two narrow brick niches flank a larger stone niche in the center of the parapet. The 1812 bay has two storefront windows with a recessed door in the center and a metal canopy above. Above the transom, is a flat brick arch and further above that is decorative brick work with four stone diamonds.

#53: 1800-1810 Stone, Grand Weaver Hotel (formerly Weaver and Stephenson's), 1924 (Site #: RH03-070)

This hotel stands four stories tall and is of brick curtain wall and reinforced concrete construction. The building has a fabric awning that stretches around the Stone and 18th Street facades. The ground level features glass display windows for several storefronts. The former Rexall Drug Store (Falls City Pharmacy) occupied the southwest corner for many years. The hotel currently has a flower shop and barber shop, but the rest is currently vacant while the hotel is being remodeled. The fenestration on the upper three stories of the H-shaped structure consists of 1/1 windows in wood frames with stone sills. Decorative features consist of simple brickwork that includes corner quoins. Other decorative features include brick

Falls City Commercial Historic District

Richardson County, Nebraska

Name of Property

County and State

columns/pilasters with stone caps and bases and stone stringcourses. Finally, there is an intricate decorative corbeled stone cornice and entablature at the roof level that extends around the building's exterior. The center bay, just above the third story windows, features two stone squares with "19" and "24" flanking a central stone engraved with "Weaver." The large, period "HOTEL" sign remains on the rooftop.

#54: 1700 Stone, Richardson County Courthouse and Public Square, 1923-25. Architect: William F. Gernhardt. NRHP listed in 1990. (Site #: RH03-069 & RH03-420)

The following is an excerpt from the National Register nomination, written by consultant Barbara Beving Long of Four Mile Research Co. in 1990. The structure is currently used as the county courthouse and is the third iteration.

"Built in 1923-25, the Richardson County Courthouse is a fine, largely unaltered example of the Property Type, County Citadel. Identifying features include: rectangular shape, centered entrance, costly materials, distinctive ornamentation, Classical Revival stylistic influence, provision for fireproof storage, and the impression of a government building representing modernity, simplicity, strength, and prosperity. In addition, the courthouse has other County Citadel characteristics: flat roof and designed by an architect. The property is also a good and late example of the Nebraska courthouses William F. Gernhardt designed during an unusually productive period, between 1910 and 1923. The courthouse illustrates the evolution of his courthouse commissions. The nominated property is considered a district, for there are two small noncontributing objects, a 1950 Statue of Liberty and a recent small veterans' memorial commemorating war dead from three wars in addition to the contributing courthouse."⁵

The status of non-contributing for the two small objects is appropriate for the Courthouse listing. However, for the Falls City Commercial Historic District nomination, the 1950 Statue of Liberty is considered a contributing object while the "recent" veterans' memorial is considered non-contributing, as it falls outside of the period of significance.

#55: 1620-1624 Stone, former Richardson County Bank Building & Masonic Temple (3rd Floor) (Vacant), 1921 (Site #: RH03-071)

This three story structure is the second Richardson County Bank building, having been erected in 1921 after the first, built of brick and frame construction, burned in 1918. The building is of early 20th century design, but contains Greek Revival elements. It features reinforced concrete and frame truss construction. The ground level's exterior has stone cladding, and the fenestration along the 17th Street façade consists of six paired rectangular windows with arched transom and arch above, along the majority of the façade, and rectangular windows with pediments above at each corner. At the east end of the 17th façade is a metal canopy. The fenestration on the upper two stories is a series of seven paired 1/1 windows with central dividing mullion and one 1/1 rectangular window on each corner. Brick pilasters, with stone caps and bases, separate each of the nine bays, and a stone stringcourse spans the building just above the third story windows. A stone cornice with corbels lines the roof level. The primary façade, on Stone Street, can be divided into three bays. The first bay features an arched entryway flanked by two columns and capped with an entablature and corbelled pediment. Two rectangular windows are placed on either side of the entry and flanked by stone pilasters. Each of the three entryway transoms has a diamond/cross pattern. The second bay features a double door entryway, and the third bay is comprised of a plate glass storefront with recessed entrance. A metal canopy shades the two right bays, which has a covered transom window and a sign for GG's Clothing Store, formerly located in that space. The front of this façade is also clad in stone on the ground level. The fenestration on the upper two stories is three sets of paired 1/1 windows with central mullion. Each window on the top story is capped with a 4/4 lite transom. Centrally placed above these windows is a stone engraved with "Masonic Temple."

#56: 1618 Stone, A&G Restaurant, c. 1920 (Site #: RH03-437)

This one story brick commercial building has served as a restaurant for many years. The ground level features a modern storefront with central entryway and glass windows with a green fabric awning bearing the words "A&G Restaurant." Simple brick details decorate the top half of the building.

⁵ Barbara Beving Long. Four Mile Research Co. "Richardson County Courthouse" National Register of Historic Places Nomination, 1990.

Falls City Commercial Historic District

Richardson County, Nebraska

Name of Property

County and State

#57: 1616 Stone, Hoot N Annie's/Jenkins Financial, c. 1920 (Site #: RH03-464)

This one story brick structure is slightly shorter than A&G's building and features one small storefront with recessed door and glass display windows and another office with larger display windows and a recessed entrance. The building has a canvas awning.

#61: 1606 Stone, Gerhardt Building (Yesterday's Closet), c. 1880 (Site #: RH03-073)

This two story brick commercial building holds a typical storefront on the ground level with a recessed entry on the southern side, a metal canopy, and a covered transom with a sign banner reading "Yesterday's Closet." On the right side is an entry to the stairway leading to the upper story apartments. The second story features a prominent oriel window on the left with decorative cornice, central rectangular window and 1/1 rectangular windows on each sides. None of the windows are original to the building, yet the size and shape of all opening has been retained. The southern side of the second story has a square opening divided by a pair of rectangular windows with central dividing mullion. The cornice is decorated with a corbelled brick design.

#62: 1604 Stone, Etc. Annex, c. 1880 (Site #: RH03-439)

This two story brick commercial building features a glass storefront with recessed entry, a covered transom, and metal canopy. The second story has two square openings with paired rectangular windows and a central dividing mullion. The details in the cornice are a simple brick design.

#63: 1600-1602 Stone, Slocum Building (KTNC & Life in the Spirit), c. 1929 (Site #: RH03-074)

This two story tan brick building has two distinct storefronts with recessed entries with a stairway entrance between them. The transom window is exposed and spans the width of the façade, along with a metal canopy below and stone stringcourse above. The second story is divided into seven bays with a string of single pane windows. Decorative stone pilasters and sills divide the bays. Each pilaster extends to the roofline and, with the exception of two, is capped by stone finials. The brick above the windows is in a decorative square pattern with the bricks alternating in direction to form squares. A stone entablature forms the cornice of the building, while "1929 Slocum" is engraved in a stone in the center.

#64 & #65: 1520-1524 Stone, Nebraska State Bank Building (Brotts Law Office and Chaney's Furniture annex), c. 1880 (Site #: RH03-075)

This two story brick commercial building fronts on Stone and 16th Streets. The façade facing 16th has two entrances at 109 and 111 E 16th and four rectangular windows on the ground level. The upper story features a string of 10 rectangular 1/1 windows with decorative entablature lintels and stone sills. The cornice that covers the roofline of both facades is comprised of brick corbels. There is a rough brick stringcourse and corbeling under the second story window openings. The fenestration and corbelling wraps around the northeast corner of the building and extends across the Stone Street façade. The second story corner features a single 1/1 rectangular window. A recessed entry with a series of stone columns and an entablature that is engraved with "Nebraska State Bank" also wraps around the corner of the building. The Stone Street facade is divided into two bays, one of which contains the corner of the building, while the other is the Chaney's furniture annex at 1520-22 Stone. The ground level has a stairway entrance for second story access, which is located between the corner bay and the Chaney's storefront. The Chaney's storefront is divided in two parts with a large display window on either side of a recessed entryway. On the second story of the Stone Street façade there are three rectangular 1/1 windows, two oriel windows, and two smaller rectangular 1/1 windows flanking both sides of the southern oriel window. Each oriel window has a decorative cornice.

#66: 1518 Stone, La Fiesta Mexican Restaurant, c. 1880 (Site #: RH03-463)

This two story brick commercial building has stone cladding on the ground level with decorative rectangular and spiral metal columns, two display windows and recessed entryway with a metal canopy overhead. The transom window is covered and painted orange, while a decorative cornice with small brackets remains above the transom. The second story is covered by a blue metal slip cover punctuated by two small 1/1 light windows. 1818 and 1816 Stone have been combined on the interior to form a Mexican restaurant.

Falls City Commercial Historic District

Richardson County, Nebraska

Name of Property

County and State

#67: 1516 Stone, La Fiesta Mexican Restaurant, c. 1880 (Site #: RH03-462)

This one story brick and stone commercial building has a storefront on the ground level with central entrance and metal canopy overhead. Two thirds of the exterior is clad in stone, but the upper portion of the wall retains its original brick façade. A simple design of three recessed brick panels with brick cornice and corbelling form the decorative aspects of the building. 1816 and 1818 Stone have been combined on the interior to form a Mexican restaurant.

#68: 1512-1514 Stone, H&R Block, c. 1900 (Site #: RH03-443)

This two story brick structure has a traditional storefront that angles back to a recessed entrance on the north end. The building has simple brick detailing, a canvas awning, and a sign for "H & R Block." There is also a recessed garage/storage addition (2004) on the southern end of the building.

#69: 1819 Harlan, Andrew's Monument Company, 1957 (Site #: RH03-431)

This one story modern steel and concrete structure originally served as a service garage and then as a monument making company. The structure has two garage service entries on the southern end and is painted white, while the other side is painted tan with two display windows flanking a central entryway. All of the openings on this side have a transom window above. The building is set back from the street.

#70: 1817 Harlan, Hoy's Ideal Cleaners, 1937 (Site #: RH03-222)

This one story, one bay commercial dry cleaning building features black Carrara glass on its main (east) facade. The storefront consists of a centrally-placed large octagonal window flanked on either side by a single entry door. Each door is capped by a transom and metal canopy. On the far side of each door, a long vertical window is comprised of 32 opaque prism glass squares. The top portion of the façade features off-white synthetic tiles with the words "Ideal Cleaners" in black lettering reaching across the facade. The building is capped by a simple cornice.

#71: 120 E. 18th, Lydia Brunn Memorial Library/Old City Hall & Fire Department (Falls City Pharmacy), 1902 (Site #: RH03-432)

This two story painted brick commercial building, erected in 1902 as the city library, has facades on Harlan and 18th Streets. The 18th Street façade features decorative lights, an arched, recessed entryway with fabric awning, a cornerstone reading "Lydia Brunn Memorial Library, 1902," and a square window divided into three rectangular windows with dividing mullions and fabric awning on the ground level. The upper story contains two pairs of single pane rectangular replacement windows with stone sills and lintels. A decorative brick cornice extends around to both facades. The building is of symmetrical design and the roofline of the southeast corner features a small ribbed turret with conical top. Between the first and second stories of both facades, signage, consisting of individual letters, spells out "Falls City Pharmacy." The Harlan Street façade has four windows identical to that of the first story on 18th and three pairs identical to those of the second floor of the 18th Street façade. There is also a one story rear portion of the building with an arched entryway that has been in-filled with brick and a simple door. A second entry is located to the north. This building housed the Falls City Rural Fire Department until c. 1972.

#72: 111-113 E. 17th, Lichty, Tubach, Sikora Insurance Agency and Halbert Law Office, c. 1911 (Site #: RH03-434 & RH03-435)

This two story brick commercial office building is divided into two bays. On the storefront level, the east bay is clad in synthetic wall covering and serves as the home of the Lichty, Tubach, Sikora Insurance Agency. It has three square windows and a recessed entry (113 E. 17th). The second bay (111 E. 17th), is the Halbert Law Office. This bay contains a door leading to the second story, with a sign for Drill Well, LLC above, and a flush entrance with a plate glass rectangular window and a sign with "scales and Halbert, Dunn, & Halbert" in black lettering. A fixed metal awning conceals the transom. The northwest corner of the building contains a recessed arched window with a stained glass transom. Above the recessed arch is a stone engraved with "Halbert Building." The second story features a paired set of 1/1 lite windows, an oriel window with decorative details, two 1/1 rectangular windows, and a single 1/1 window in the corner. The brick cornice is corbelled and features four short pilasters with rounded finials extending above the roofline. Also extending above the roofline, on the east bay, is a stone engraved with "19 Custer 11."

Falls City Commercial Historic District

Richardson County, Nebraska

Name of Property

County and State

#73: 115-117 E. 17th, Vacant, c. 1915 (Site #: RH03-433)

This two story commercial building is divided into two bays. The storefront of the east bay has a single door with transom and two thin horizontal windows. The western bay is clad in vinyl siding, has two small horizontal windows, and a single door. Both the windows and doors have bars across them, as the store previously served as a gun/pawn shop. The transom of both bays is covered with metal sheeting. The upper story is divided into two identical bays each with an oriel window and a pair of rectangular windows with a flat brick arch above and a stone string course above and below. All of the window openings have decorative wood panels in place. The cornice is a combination of stone and brick corbelling.

#74: 119 E. 17th, Konstantino's Pizza, c. 1915 (Site #: RH03-101)

This two story commercial structure has a traditional storefront window and entryway. To the west of the entry, a stairway leads to the upper floor. The building has a transom window that has been paneled over with metal strips. There is a sign hanging above the entry with "Konstantino's Pizza" spelled out. The upper story has three 1/1 rectangular windows with stone lintels and sills. A stone stringcourse runs horizontally across the façade, dividing the windows in half. A decorative brick stringcourse and stone and brick corbelling form the cornice. This building and a portion of the one next door are part of the pizza parlor with a meeting/party room.

#75: 1617 Harlan, Armbruster Motor Company, 1956 (Site #: RH03-436)

This one story, brick commercial building and show lot is being used as an auto dealership. The façade facing Harlan Street is comprised of a ten pane ribbon window. The main entry is located on the southern side of the building and includes a display window and is topped by a metal canopy. Further west on this façade, one will find a garage door and single entry door. Eleven small vents punctuate the top third of this façade.

Contributing Structure: There is one (1) contributing structure within the boundaries of the Falls City Commercial Historic District: the street consisting of cobblestone brick pavers.

#76: Brick Street, 1910-1913 (Site #: RH03-466)

Brick pavers were installed between 1910 and 1913 along Stone Street and all of its side streets. Today, the pavers remain intact on a significant portion of the streets within the district. The following retain brick pavers: Stone Street along the north/south boundary of the district, 19th Street west of Stone Street, 18th Street from Chase Street to Harlan Street, 17th Street from Chase Street to Harlan Street, 16th Street east of Stone Street, and 15th Street along the east/west boundary of the district. The street retains excellent integrity.

Non-Contributing Buildings: Thirteen (13) buildings within the district are non-contributing. To be considered as non-contributing, each building either has significant alterations that overpower the integrity of the building, or the date of construction falls outside of the period of significance. While each is non-contributing, none detract from the overall integrity of the district as a whole. Each non-contributing property is listed below by an identification number (which is keyed to the district map), address, current tenant, and date of construction.

#3: 224 W. 17th, Haworth's Seamless Gutter, c. 1952 (Site #: RH03-417)

This property consists of a lumber yard and a one story brick commercial retail and office building. The eastern half of this property is an open area used for the lumberyard and as a storage area. The western half along 17th consists of the original one story structure, which was added onto and altered at a later date. The corner has a square window with vinyl siding cladding and the Barada Street façade is covered with metal cladding. The 17th Street Façade features a large square window and single door opening, as well as a bricked-in opening on its eastern portion.

#8: 1617 Chase, Jim Hill's Paint, Glass, Wallpaper, c. 1915

This one story brick commercial building is currently being used by Jim Hills Paint, Glass, Wallpaper. A modern glass storefront is capped by a metal canopy, while a metal panel covers the entire façade above.

Falls City Commercial Historic District

Richardson County, Nebraska

Name of Property

County and State

#16: 110-112 W. 17th, Southeast Nebraska Communications and Towle Realty Co., 1953

This one story brick commercial structure is home to the Southeast Nebraska Communications and Towle Realty Co., who moved into this building shortly after it was constructed. The ground floor features four large modern vertical plate glass windows, and a double door entry. A fabric awning stretches the entire length of the building. A metal cornice has been added to the top of the building.

#19: 114 W. 15th, Great Western Bank, 1969

This one story, three bay brick commercial structure with decorative porch posts and flat roof was built in 1969. The central bay protrudes from the rest of the building giving it a squat T-shaped appearance. This bay features a flat metal awning, a modern door with single pane plate glass windows on either side and the building's cornice is a simple metal strip at the roofline. The left (west) bay features a large rectangular window five single pane plate glass sections and smaller rectangular window with two panes. The right (east) bay features a single large rectangular plate glass window divided into seven panes.

#25: 1723 Stone, Falls City Fitness Center, c. 1920

This is a one story brick commercial structure with a modern storefront and central entryway. A transom with a series of rectangular glass panels is above the windows. The building has been covered by wood paneling on the primary facade. A canvas awning extends from the building and is topped by a decorative cornice. The north exterior consists of projecting and recessed bricks painted red.

#26: 1721 Stone, Stephanie's Epic Cakes, c. 1925

This one story commercial structure has a typical storefront with a north recessed entryway, capped by a metal canopy. Colored tile in the entryway spells out "Maust Brothers." Above the storefront, the building has been covered by white metal panels.

#35 & #36 : 1619-1623 Stone, Edward Jones, Robert Aitken, C.P.A, and Jaydee's Place, c. 1880

This two story, three bay building is actually two to three separate buildings that were combined, most likely in the 1960s or 1970s, to appear as one building. The upper story has no window openings, is made of stone panels, and has a sign for Edward Jones Investments on the north end and "Welcome to Falls City" in the middle. On the lower level, the first bay features a stairway entrance to the second story at the north end with two wide rectangular windows with decorative shutters and shingle cladding, and below the windows is wood paneling. A third small square window is on the edge with the entryway. The middle bay features a single recessed door opening on the north end and three display windows on the other. The final bay is in the location of the old First National Bank (F&M Bank), Odd Fellows Hall, and first telephone office building that originally featured a large arched entryway and two arched windows on either side. The lower bay features a canvas awning and glass storefront with a recessed entryway on the north end. The fenestration on the upper two stories consists of a rectangular window. At the west end of this façade is an entrance, and the primary façade was altered c. 1950-1970 to incorporate stone panels as an exterior wall cladding.

#39: 1613 Stone, Sharon's Tips, Nails, & Toes (The Studio), 1910

This two story brick building features a glass storefront with display windows on the southern end and a recessed entry on the north end. Above the storefront, a metal awning projects from the building. The upper story has two arched 1/1 window openings that are not original and are covered by a synthetic material or stucco.

#42: 1607 Stone, Wolfe's Printing, c. 1884

This one to one and one-half story brick commercial building features a slanted storefront with recessed entrance on the south side and a flower planter just below the window line of the three display windows of the storefront. A canvas awning covers the transom window, which is also covered with vertical metal strips. Above the canvas awning, vertical metal siding extends above the flat roof. The building was originally two stories with the top having been burnt in a fire.

#58: 1612-1614 Stone, Heritage Falls/Mary's Appliance, c. 1920

This one story, two bay building houses two storefronts that are clad with PermaStone. The left bay at 1614 Stone has a single square glass window and recessed door opening while the other has a typical storefront with recessed entryway. A

Falls City Commercial Historic District

Richardson County, Nebraska

Name of Property

County and State

metal canopy spans the entire length of the building, while above the canopy, a metal slip cover envelops the rest of the building.

#59: 1610 Stone, Radio Shack, c. 1900

This one story commercial building has a glass storefront with central entrance and is clad with vinyl strips aligned vertically. The cladding likely conceals a brick facade. The building has a sign each for Radio Shack and U.S. Cellular.

#60: 1608 Stone, Miller Monroe & Falls City Travel, c. 1900

This one story storefront features two doors, a metal canopy, and a mansard roof with green tile shingles, which was likely added in the 1950s or 1960s. The transom window has been covered with modern siding material.

Building Inventory **Contributing:** **Non-Contributing:**

Historic/Common Name	Address	Built Date	Photo #	Map #	NeHRSI#
National Guard Armory/City Hall	1820 Towle	1936	26, 27	1	RH03-375
Prichard Auditorium	312 W. 17th	1939-1940	28	2	RH03-027
Haworth Seamless Gutters	224 W. 17th	c. 1952	25	3	RH03-417
Country Cable/Dish	1707 Chase	c. 1920	-	4	RH03-413
Meyer Home Center	1705 Chase	c. 1920	15	5	RH03-412
Jim Hill's Paint & Glass	1701-1703 Chase	c. 1920	15	6	RH03-455
Jim Hill's Paint & Glass	1619-1623 Chase	c. 1920	9	7	RH03-245
Jim Hill's Paint & Glass	1617 Chase	c. 1915	9	8	
Joy's Machine Shop	1615 Chase	c. 1920	9	9	RH03-454
Farmer's Repair & Machine Shop	1613 Chase	c. 1920	9	10	RH03-244
1611 Chase	1611 Chase	c. 1920	9	11	RH03-453
1609 Chase	1609 Chase	c. 1920	9	12	RH03-452
Jones Air Conditioning	1605-1607 Chase	c. 1920	9	13	RH03-451
Erath Building	120 W. 18th	1900	13	14	RH03-378
114-118 W. 17th	114-118 W. 17th	c. 1925	-	15	RH03-415
Southeast Nebraska Communications/Towle Realty	110-112 W. 17th	1953	-	16	
116-120 W. 16th	116-120 W. 16th	c. 1900	-	17	RH03-449
112-114 W. 16th	112-114 W. 16th	ca. 1900-1925	-	18	RH03-450
Great Western Bank	114 W. 15th	1969	-	19	
Blue Collar Auto/former filling station	1823 Stone	c. 1925	1	20	RH03-465
The Would Eye	1819-1821 Stone	c. 1925	1	21	RH03-428
1813-1817 Stone	1813-1817 Stone	c. 1925	1	22	RH03-427
Eddie Motors	1805-1811 Stone	c. 1925	1	23	RH03-426
SEINA/Takes Two/Rogers Shoe Shop/former Montgomery Ward	1801-1803 Stone	1928	1, 12	24	RH03-218 & RH03-425
Falls City Fitness Center	1723 Stone	c. 1920	2	25	
Stephanie's Epic Cakes	1721 Stone	c. 1925	2	26	
Weaver & Merz Law Office	1719 Stone	c. 1910	2	27	RH03-422

Falls City Commercial Historic District

Richardson County, Nebraska

Name of Property

County and State

Historic/Common Name	Address	Built Date	Photo #	Map #	NeHSI#
Bartek Chiropractic/ Cedar Hollow Foods	1717 Stone	c. 1910	2	28	RH03-219
Norma's Antiques/Former River Theater	1715 Stone	c. 1925	2	29	RH03-421
Schulenberg Bakery	1713 Stone	c. 1915	2	30	RH03-419
Former CRT	1709 Stone	c. 1880	2, 10	31	RH03-161
Alternative School	1707 Stone	c. 1880	2, 10	32	RH03-418
Main Street Falls City, Edge Falls City Chamber	1705 Stone	c. 1880	2, 10	33	RH03-068
F&M Bank (Former Falls City State Bank and First National)	1701-1703 Stone	1894-95	2, 10	34	RH03-414
Edward Jones, Robert Aitken, CPA, Jaydees Place	1619-1623 Stone	c. 1880	4, 5, 20	35 & 36	
Memory Lane Décor	1617 Stone	c. 1910	4, 5, 20	37	RH03-220
Brown's Shoe Fit Co.	1615 Stone	c. 1930	4, 5, 20	38	RH03-220
The Studio	1613 Stone	1910	4, 5, 20	39	
Flair Boutique	1611 Stone	c. 1880	4, 5	40	RH03-440
Flair Boutique	1609 Stone	c. 1880	4, 5	41	RH03-072
Wolfe's Printing	1607 Stone	c. 1884	4, 5	42	
Hometown Floral	1605 Stone	c. 1884	4, 5	43	RH03-441
Dorrington Building/Falter Store	1601-1603 Stone	1881	4, 5	44	RH03-442
Ryan Building	1523 Stone	c. 1884	6	45	RH03-221
Gehling Theater/True Value Hardware	1519 Stone	1892-93	6	46	RH03-076
McCarthy Building/former Oil City Theatre	1517 Stone	c. 1941	6	47	RH03-461
Bill's Used Furniture	1503-1505 Stone	c. 1961	6, 21	48	RH03-445
F&M Bank Drive-Thru	1501 Stone	1961	6, 21	49	RH03-444
former Morehead Garage	1900-1910 Stone	1915	19	50	RH03-265
Falls City Auto Supply	1818-22 Stone	1923	8	51	RH03-430
Rivoli Theatre	1812-1816 Stone	c. 1923	8	52	RH03-217
Grand Weaver Hotel/former Weaver and Stephenson Hotel	1800-1810 Stone	1924	8, 14	53	RH03-070
Richardson County Courthouse/Public Square	1700 Stone	1923-1925	23, 24	54	RH03-069 RH03-420
Richardson County Bank	1620-1624 Stone	1921	3, 22	55	RH03-071
A&G Restaurant/ former Brown's Café	1618 Stone	c. 1920	3, 22	56	RH03-437
Hoot N Annie's/Jenkins Financial	1616 Stone	c. 1920	3, 22	57	RH03-464
Mary's Appliance/ Heritage Falls	1612-1614 Stone	ca 1920	3, 22	58	
Radio Shack	1610 Stone	1900	3, 22	59	
Miller Monroe / Falls City Travel	1608 Stone	c. 1900	3, 22	60	

Falls City Commercial Historic District

Richardson County, Nebraska

Name of Property

County and State

Historic/Common Name	Address	Built Date	Photo #	Map #	NeHSI#
Gerhardt Building / Yesterday's Closet	1606 Stone	c. 1880	3, 22	61	RH03-073
Etc. Annex	1604 Stone	c. 1880	3, 16, 22	62	RH03-439
Slocum Building	1600-1602 Stone	c. 1929	3, 16, 22	63	RH03-074
Nebraska State Bank Building/Chaney's Furniture Annex	1520-1524 Stone	c. 1880	7	64 & 65	RH03-075
La Fiesta Mexican Restaurant	1518 Stone	c. 1880	7	66	RH03-463
La Fiesta Mexican Restaurant	1516 Stone	c. 1880	7	67	RH03-462
H & R Block	1512-1514 Stone	c. 1900	7	68	RH03-443
Andrew's Monument Company	1819 Harlan	1957	-	69	RH03-431
Hoy's Ideal Cleaners	1817 Harlan	1937	-	70	RH03-222
Lydia Bruun Memorial Library/Falls City Pharmacy	120 E. 18th	1902	11	71	RH03-432
Halbert Building	111-113 E. 17th	c. 1911	17, 18	72	RH03-434 RH03-435
115-117 E. 17th	115-117 E. 17th	c. 1915	17, 18	73	RH03-433
Konstantino's Pizza	119 E. 17th	c. 1915	18	74	RH03-101
Armbruster Motor Company	1617 Harlan	1956	-	75	RH03-436
Brick Street	N/A	1910-1913	N/A	76	RH03-466

Falls City Commercial Historic District
Name of Property

Richardson County, Nebraska
County and State

8. Statement of Significance

Applicable National Register Criteria

(Mark "X" in one or more boxes for the criteria qualifying the property for National Register listing.)

- A** Property is associated with events that have made a significant contribution to the broad patterns of our history.
- B** Property is associated with the lives of persons significant in our past.
- C** Property embodies the distinctive characteristics of a type, period, or method of construction or represents the work of a master, or possesses high artistic values, or represents a significant and distinguishable entity whose components lack individual distinction.
- D** Property has yielded, or is likely to yield information important in prehistory or history.

Criteria Considerations

(Mark "X" in all the boxes that apply.)

Property is:

- A** Owned by a religious institution or used for religious purposes.
- B** Removed from its original location.
- C** A birthplace or a grave.
- D** A cemetery.
A reconstructed building, object, or structure.
- E** A commemorative property.
- F** Less than 50 years of age or achieved significance within the past 50 years.

Areas of Significance

(Enter categories from instructions.)

- Commerce
- Politics/Government
- Social History
-
-
-

Period of Significance

1857-1961

Significant Dates

1857
1860

Significant Person

(Complete if Criterion B is marked above.)

N/A

Cultural Affiliation

N/A

Architect/Builder

Bohrer Brothers
W.F. Gernandt, Architect
Charles H. Herman
M.N. Hunt

Statement of Significance Summary Paragraph (Provide a summary paragraph that includes level of significance, applicable criteria, justification for the period of significance, and any applicable criteria considerations.)

The Falls City Commercial Historic District is locally significant under National Register Criterion A for its association with Commerce and Social History. From its beginnings as a gateway for anti-slavery settlers making their way from Iowa to Kansas, Falls City evolved into a community with a thriving commercial district and a hearty small-town population. The district is also locally significant for its association with Politics/Government as the location of the county seat of Richardson County, which was fiercely debated until 1860. The area that comprises the district served as the central business district

Falls City Commercial Historic District

Richardson County, Nebraska

Name of Property

County and State

and center of civic/social life during the period of significance and into the present day. The period of significance is 1857-1961, which encompasses the founding of the city (1857), Falls City's incorporation (1860), construction dates of all contributing buildings within the district, as well as many significant events in the city's history.

Narrative Statement of Significance (Provide at least one paragraph for each area of significance.)

Founding of Falls City 1857-1860

The Kansas-Nebraska Act, passed by the United States Congress in 1854, opened up Nebraska to settlement by white settlers. Passage of this act also spurred conflicts on the Kansas/Missouri border, in what became known as "Bleeding Kansas," as pro-slavery settlers feuded with free-soil settlers over the future of Kansas as a state. This had a large impact on the founding of Falls City and Richardson County. Organized the same year as the Kansas-Nebraska Act, the county saw some of the earliest white settlements in the new territory. At the same time, several American Indian tribes resided in a 20-mile long reservation in Richardson County known as the "Half-Breed Tract," which was created via the July 15, 1830 treaty at Prairie du Chien, Wisconsin.

Senator (then General) James H. Lane of Kansas proved instrumental in the founding of Falls City. Due to its location, the town became a stop on the Lane Trail, allowing free-soil white settlers into the Kansas territory via Iowa and southeast Nebraska, which allowed them to avoid the Missouri River approaches controlled by pro-slavery sympathizers. Founded by James Lane in 1856, the trail also functioned as a path to smuggle guns into Kansas. In 1855-56, Lane and his men camped on what would become the Falls City courthouse square. Various accounts indicate that Lane had a secret arsenal of firearms at one of three sites in what would become downtown Falls City.⁶ The Lane Trail also served as a conduit for the Underground Railroad. According to William C. Rowan, based on reports from the 1890's, stations were located in a three-room brick house built on the site of the current Elk's parking lot, in David E. Dorrington's barn on the NW corner of 16th & Stone, and in what is now Wolfe's Printing.⁷

On March 27, 1857, at the then county seat, Archer, Nebraska, public notice was officially published that a town would be formed in what is now Falls City. The notice stated that:

"John A. Burbank, Morris Hunt, Isaac L. Hamby, and J. Edward Burbank have selected the N ¹/₂ of Sec. 5, Township I, Range 16 East of the 16th P.M. in Richardson County for the purpose of a townsite with the intention of surveying and platting according to the law as soon as possible. Therefore all persons are warned from trespassing on the same from this day, Mar. 27, 1857, at 5 o'clock p.m."⁸

W. T. Stout sold land that comprised the original town site to James Lane for \$50.⁹ The original town company members were Sewall R. Jamison, Sen. James H. Lane, David Dorrington and Alexandar Rickards. A.J. Deshaazo performed the initial survey and platting of the town. By October of 1857, half a dozen frame structures had been erected.¹⁰

John A. Burbank, Isaac L. Hamby, J. Edward Burbank, et al. petitioned to incorporate the city on May 17, 1859, and the legislature approved the act on January 13, 1860. The Union Hotel, erected in 1861 at 1801-1803 Stone Street served as an early hotel and tavern and was the first large building erected in the district. The building is no longer extant having been

⁶ William C. Rowan. "Slavery and the Underground Railroad in Richardson County." On file at the Falls City Library & Arts Center. Accessed May 6, 2013.

⁷ Ibid.

⁸ Quoted in: "The Hundred Year History of Falls City." *The Falls City Journal*. Monday, August 26, 1857. Section B, pg. 2. Accessed May 6, 2013 at Falls City Library & Arts Center, 1400 Stone Street, Falls City, NE 68355.

⁹ Falls City Centennial Association, Inc. *Falls City Centennial: 1857-1957*. (Fostoria, Ohio: John B. Rogers Publishing Co., 1957), Pg. 2.

¹⁰ Harold C. Prichard. "The Hundred Year History of Falls City." *The Falls City Journal*. Monday, August 26, 1857. Section B, pg. 2. Accessed May 6, 2013 at Falls City Library & Arts Center, 1400 Stone Street, Falls City, NE 68355.

Falls City Commercial Historic District

Richardson County, Nebraska

Name of Property**County and State**

torn down with the erection of the Grand Weaver Hotel in 1924-1925. This initial structure stood at just one and one-half story tall and spanned 24x24 feet on the ground level.¹¹

In 1869, construction on the Atchison & Nebraska Railroad (now BNSF), also known as the "Joy Road," was begun, and by the 4th of July 1871, had been completed to within less than a mile of Falls City.¹² This was cause for great celebration. An account in the *Falls City Journal* of 1870 stated that before the railroad, Falls City "was a village of about 350 inhabitants with four merchandise firms, one harness, one wagon, one blacksmith, one boot and shoe shop, two ordinary hotels... one church, one schoolhouse, one newspaper, two saloons, six lawyers, and two doctors."¹³ As of 1860, Falls City possessed a population of 473 and by 1870 this had increased to 670 persons.¹⁴

A brick maker, Mr. Parker of Forest City, MO, came to town in the spring of 1872.¹⁵ The ability to mass produce bricks locally reduced the price and allowed Stone Street to be reconstructed with brick structures in the final two decades of the 19th century and early 20th century.¹⁶ In 1874, there was a building boom in Falls City. A vinegar factory was built at 13th and Stone and the Gehling Brewery at 11th and Stone opened production. In November 1871, C. L. Keim opened Falls City's first bank in a brick structure (west Stone), previously built by Judge E. S. Dundy in 1861.¹⁷ In 1882, a second railroad, the Missouri Pacific (now Union Pacific) would be completed in the county two miles southwest of the city. Its completion gave the town a unique asset in the form of a dual rail line.

From just prior to the Civil War to 1870, Falls City had less than thirty extant buildings and six shopkeepers.¹⁸ The original boundaries for the town consisted of Fulton Street on the east, 21st Street (then 1st) on the north, Chase Street on the west, and 15th Street (then 7th) on the south. Laid out at 85 feet wide, Lane, Harlan, and Morton Streets were originally meant to be the business district, but the first businesses and homes were built on Stone Street, due to its hilltop location.¹⁹ Falls City grew from these humble beginnings to be a regional center of civic, social, and business activities in southeast Nebraska. From the very beginning, the Falls City Commercial Historic District served as the center of community life in the region.

Criterion A: Politics/Government, Falls City's Emergence as the County Seat

In 1855, the Nebraska Territorial Legislature designated Archer to be the initial county seat for Richardson County. However, in 1857 the county seat had to be moved to Salem, because Archer was located in part of the "Half Breed Tract." From November 1858 to May 22nd 1860, a series of elections to decide the county seat occurred. A controversial election in 1859 designated Salem as the county seat.²⁰ In 1859, Falls City Mayor John A. Burbank offered to pay \$5,000 and donate 24 lots in the public square for the erection of a 30 x 50 foot brick or concrete courthouse.²¹ The May 1860 contest pitted Falls City against Arago, Rulo, and Salem for the county seat. This election was rife with not only controversy, but was also deadly. While debates ensued, a double murder occurred at the Minnick (City) Hotel located at 17th and Stone, across the

¹¹ A. R. Keim, Ed. and Publisher. "Illustrated History of Richardson County: 1887-1919." Addendum to: *Falls City Journal*. October 15, 1919, pg. 31.

¹² Ibid.

¹³ Ibid.

¹⁴ Edwards. *History of Richardson County Nebraska*, pg. 211-213.

¹⁵ Prichard. "The Hundred Year History of Falls City." *The Falls City Journal*, pg. B-8.

¹⁶ Ibid.

¹⁷ Ibid.

¹⁸ Ibid.

¹⁹ Harold C. Prichard. "The Hundred Year History of Falls City." *The Falls City Journal*. Monday, August 26, 1857. Section B, pg. 4.

²⁰ Lewis C. Edwards. *History of Richardson County Nebraska: Its Peoples, Industries, and Institutions, Illustrated Volume I* (Indianapolis, IN: B. F. Bowen & Co., Inc., 1917), pg. 154-166.

²¹ Edwards. *History of Richardson County*, 1917, p. 157.

Falls City Commercial Historic District

Richardson County, Nebraska

Name of Property

County and State

street from a polling station.²² The final location was decided on October 10, 1871, when Falls City defeated Salem by a vote of 1171 to 1030.²³

The county erected the first courthouse, of frame construction, in 1863,²⁴ and a second of stone in 1873. The two story stone courthouse cost \$25,000, had two wing additions constructed on the north and south sides in February-March 1882, was 40x30 feet, and possessed fireproof vaults to secure the county records.²⁵ This building was destroyed by fire on May 7, 1919.

In an election held on September 9, 1919, a contest erupted between Falls City and Humboldt, who had proposed to pay \$200,000 to build and donate a courthouse to the County, while Falls City called for a five mill levy. The final tally showed Falls City with 5,592 votes to Humboldt's 3,577, which preserved Falls city's status as the county seat and passed the levy to build a new courthouse.²⁶ The cornerstone for the new \$231,000 courthouse was laid on June 11, 1924 and completed in 1925. The County offices moved in on April 25th.²⁷ This Classical Revival structure was listed in the National Register of Historic Places in 1990.

Criterion A: Commerce and Social History

The Dawn of Comfort: 1877-1900

During the period of 1877-1900, brick buildings replaced the largely wooden frame buildings that then constituted the business structures on Stone Street. *Sanborn Fire Insurance Maps*, support this growth. During this period, Falls City's commercial district established its current look and feel. This building boom and prosperous time was fueled by a resurgent economy spurred by the building of the Missouri Pacific Railroad (now Union Pacific). A series of four banks opened during this time, the city established phone service, electric service, water service, and other modern amenities in the early to mid-1890s.

In addition to the banks, multiple other businesses or industries opened in Falls City. These included cigar, windmill, and broom factories to insurance companies, foundries to creameries, and greenhouses to breweries.²⁸ A description from a December 1890, *Journal* article, describes a busy courthouse square, wooden street crossings at the end of each block, the Lyford Store (now Chaney's Furniture at 1521-23 Stone), the Prater & Stitzer Butcher Shop in the middle of the block, the Sam Wahl store (by 1957 a Safeway) at the SW corner of 15th & Stone, a series of stores with clothing and other goods on display, and finally the Prater blacksmith shop at the SW corner of 14th & Stone.²⁹

This growth paved the way for significant social and political events and the construction of cultural buildings in the commercial core of the city. Two major presidential campaign rallies took place downtown in 1888 and 1896. A famed Republican orator, John M. Thurston visited in 1888 as part of the campaign between Benjamin Harrison and Grover Cleveland. The *Falls City Journal* described the event as follows:

"They came from all directions for that last grand rally. There was a band from Pawnee City, a cannon was brought from Tecumseh, there was a torchlight procession with mounted horseman and marching flambeau clubs....

²² Falls City Centennial Association, Inc. *Falls City Centennial: 1857-1957*. (Fostoria, Ohio: John B. Rogers Publishing Co., 1957), pg 6.

²³ Edwards. *History of Richardson County*, 1917, p. 161.

²⁴ Falls City Centennial Association. *Falls City Centennial*, pg. 6.

²⁵ A. R. Keim, Ed. And Publisher. "Illustrated History of Richardson County: 1887-1919." Addendum to: *Falls City Journal*. October 15, 1919, pg. 16-18.

²⁶ Ibid. pg. 18.

²⁷ Prichard. "The Hundred Year History of Falls City." *The Falls City Journal*., pg. E-5-E-6.

²⁸ Ibid. pg. C-2- C-3.

²⁹ Ibid. pg. C-2.

Falls City Commercial Historic District

Richardson County, Nebraska

Name of Property

County and State

Seventeenth Street from Stone to Chase was roped off with a platform at one end and benches of planks stretched the entire block. It was a grand and glorious affair with such notables as Buffalo Bill there for the occasion.”³⁰

The second rally took place in 1896, when William Jennings Bryan, a Nebraskan and Democrat, campaigned against William McKinley. Both parties staged parades downtown, with the Democrats having great turnout numbers and a “float drawn by white and sorrel horses. The float was topped with a crown of thorns and a cross of gold and lady in white, representing an outraged Columbia and the whole surrounded by the red glow from the fiery flambeaus.”³¹ In 1897, a different type of parade entertained the community. The Ringling Brother Circus came to town, paraded elephants down Stone Street, and drew people from miles away. Both type of event is evidence that the district was a hub of social, political, and commercial activity.³²

Yet another type of social activity came to Falls City when Michael Gehling constructed the Gehling Opera House (Theatre) at 1519 Stone in 1892-93 for a cost of \$16,000.³³ The Gehling rivaled opera houses in Omaha, St. Joseph and Kansas City. When it opened to the public in 1893 it featured “Mr. Potter of Texas” starring Harry Weaver Jr. as Sampson Potter; people from Wymore, Pawnee City, and Auburn, Nebraska attended the event.³⁴ The first movies in town, “The House Without a Key” and “The Volga Boatman” played here.³⁵ The Gehling also hosted numerous travelling vaudeville, opera and concert troupes, many community dances, commencements, political events, etc. William Jennings Bryan spoke there several times, and the “Orphan Train” from New York visited.³⁶ The building operated for 40 years and the ground level featured the Gehling Bakery on the north side, a saloon and the Gehling Brewery Office in the south side.³⁷

While the Gehling served as Falls City’s most prominent theater when built, it was not the first. J.R. Cain constructed the Cain Opera House in 1884, which featured a storefront on the ground level and the theater on the second and third stories; it was the first three-story building on Stone Street.³⁸ In addition to this structure, Cain also erected two other store fronts to the north on Stone Street with the Masons and Odd Fellows located on the second floors.³⁹ W. W. Jenne purchased the building in 1886 and renamed it the Jenne Opera House. Upon completion of the Gehling, Jenne converted the building into the Jenne Gymnasium, which on May 7, 1890, hosted a large GAR bean supper.⁴⁰ This building and two adjacent buildings are no longer extant due to a fire in 1966.

A roller skating rink and ice skating rink opened on Stump’s brick block (1600 Block of Stone) in January 1885.⁴¹ The 1885 *Sanborn Fire Insurance Map* shows another skating rink midway through the west 1700 Block of Stone. Social clubs such as the Odd Fellows and Masons organized and met in the upper floors of buildings in downtown Falls City. A young men’s organization, the Calumet Club, organized in the Dorrington Building in October 1890.⁴² The west side of the 1600 block of Stone in 1883, from south to north, featured a series of two story brick buildings with Jenne’s Banner Store (later Falter’s clothing store), Case’s Harness Shop, the Wilson & Ryan Furniture Store, and the Clegg Drug Store built in 1883.⁴³ A new

³⁰ Ibid.

³¹ Ibid.

³² Ibid. pg. C-7.

³³ Ibid. pg. C-3.

³⁴ Ron Kirkendall. “You Can Still Hear the Music.” March 28, 1984. (Falls City, Nebraska, 1984), pg 1-4.. [Accessed 6/26/2013 at Falls City Area Chamber of Commerce & Main Street Falls City, 1705 Stone St., Falls City, NE and at True Value Hardware, 1519 Stone St, Falls City, NE 68355].

³⁵ Ibid.

³⁶ Ron Kirkendall. “You Can Still Hear the Music,” pg. 1-4.

³⁷ Prichard. “The Hundred Year History of Falls City.” *The Falls City Journal.*, pg. C-4 and “Gehling Theatre a Real Landmark.” *Falls City Journal.* April 1966. [Accessed June 26th] at Falls City Library and Arts Center, 1400 Stone, Falls City, NE 68355).

³⁸ Prichard. “The Hundred Year History of Falls City.” *The Falls City Journal.*, pg. C-4.

³⁹ Ibid.

⁴⁰ Ibid.

⁴¹ Ibid. pg. C-5.

⁴² Ibid.

⁴³ Ibid. C-6.

Falls City Commercial Historic District

Richardson County, Nebraska

Name of Property

County and State

high school (now the North School) was erected at the north end of Stone St. in 1893. The Falls City Library Association, incorporated in 1861 and changing to the Falls City Reading Room and Literary Association in 1885, formed and moved to the second story of Robert Clegg's store on Stone Street between 15th & 16th.⁴⁴ In 1895, the Southeast Nebraska Telephone Company opened its first office in a portion of the second story of the Dorrington Building where it shared space with the Literary Association that moved there in 1889.⁴⁵

Growth, Decline & Fire: 1900-1933

By the turn of the century, downtown Falls City was a bustling commercial center with a growing population that supported frequent social and political events. In 1900, Falls City hosted a political rally with the McKinley-Roosevelt versus William Jennings Bryan campaign. D. R. Reavis Sr. "described [it] as the greatest crowd ever assembled in Falls City" and Mark Hanna, the Republican Committee Chairman, spoke from a carriage in front of the first Richardson County Bank.⁴⁶ During the election of 1904, Speaker of the U.S. House of Representatives Joe Cannon and Congressman James E. Watson spoke on behalf of Theodore Roosevelt in front of the Gehling Opera House.⁴⁷ In 1901, Carrie Nation, fervent temperance advocate, visited all of the saloons in the city, including those in the downtown business district. A virulent prohibition movement fought hard to make Falls City dry. It had several successes and setbacks that were eventually ended with the 21st Amendment in 1933 that repealed the 18th Amendment banning alcohol in the United States.

In addition to many notables attracting visitors to the district, several building projects also established Falls City as a local destination. By 1902, a bequest of \$10,000, from the will of Lydia Bruun Woods, and the donation of the site by Joseph H. Miles, allowed for the memorial library and City Hall to be built at the corner of 18th & Harlan.⁴⁸ Prior to the construction of this building, the City offices were located in the County Courthouse. In 1903, a flour mill and Hinton's Ice Plant were erected along with the new Falls City Journal Building, built by J. L. Slocum at 108 E 16th (this structure was either destroyed or heavily remodeled, as the building now bears the words "Slocum 1929").⁴⁹ Between, 1909 and 1913, the Missouri Pacific Railroad built a division house and an 18 stall roundhouse on South Stone Street. In two years, between 1908 and 1909, two movie theaters opened in town, the Lyric (Sun or Empress) in a building at 1420 Stone and then the Electric (1909) at 1606 Stone. This further increased the customer base for downtown Falls City shops and entertainment venues, as well as boosting the overall economy of the town.⁵⁰

As the city developed, the introduction of the automobile began to edge out livery stables, wagon, horse, and buggy shops, and harness stores in the commercial district. The city started paving Stone Street with paving bricks in 1910, but according to the *Falls City Journal*, in an article dated Jan 30, 1913, "the three blocks around the courthouse had been paved and that the paving on Stone street was continuous from 11th street to 21st."⁵¹ Prior to the paving brick being installed, the roads were all dirt. New sewers were also installed in town between 1913 and 1914

Between 1917 and 1933, Falls City experienced a decline as an industrial center, but at the same time it expanded as a growth and service center. On April 14, 1919, John H. Morehead with William Uhlig, et al. incorporated the Nebraska State Bank and opened for business on October 24 at 1524 Stone Street. The Bank merged with the Falls City State Bank on March 1, 1936.

⁴⁴ A. R. Keim, Ed. and Publisher. "Illustrated History of Richardson County: 1887-1919." Addendum to: *Falls City Journal*. October 15, 1919, pg. 39, and Prichard. "The Hundred Year History of Falls City." *The Falls City Journal*., pg. C-7-C8.

⁴⁵ Prichard. "The Hundred Year History of Falls City." *The Falls City Journal*., pg. C-7-C8.

⁴⁶ Ibid. pg. C-2.

⁴⁷ Ibid. pg. D-6.

⁴⁸ Prichard. "The Hundred Year History of Falls City." *The Falls City Journal*., pg. D-1 and Falls City Centennial Association. *Falls City Centennial*, pg. 31.

⁴⁹ Prichard. "The Hundred Year History of Falls City." *The Falls City Journal*., pg. D-2.

⁵⁰ Ibid. pg. D-4.

⁵¹ Ibid. pg. D-5.

Falls City Commercial Historic District

Richardson County, Nebraska

Name of Property

County and State

The years 1918 and 1919 proved difficult for Falls City and its downtown with a series of fires that destroyed prominent building and some shops. On October 7, 1918, fire destroyed the Richardson County Bank building as well as the Kramer Meat Market next door when the south wall collapsed.⁵² Many lost everything that day and the *Falls City Journal* stated that “those who lost everything they had in the building were the Masons (on the third floor), [three doctors and four other merchants/professionals]... On the first floor of the Richardson County Bank, T. L. Davies Jeweler, and C. J. Caverzagie were completely burned out.”⁵³ After the fire, the bank moved to a building where the Halbert Building currently stands. This building, in 1957, served as the city’s police station.⁵⁴ The new Richardson County Bank Building and Masonic Temple was completed in 1921 at the same location (the bank has since moved to a building constructed in the 1970’s on Harlan Street). Additionally, on May 7, 1919, fire destroyed the second Richardson County Courthouse. Several offices relocated to different buildings around downtown, and for five years, the County operated out of a temporary 30 x 50 foot structure at the southeast corner of the square.⁵⁵ In October 1919, the Leo Vinegar Works burned down and in December, a fourth fire claimed Hunker’s Bakery and Y.W.C.A (2nd floor) and the J.C. Penny Store (all located on Stone Street near the Union Hotel).⁵⁶ The Hunker Bakery and J. C. Penny building burned again in 1923, and then a third fire destroyed the J.C. Penny Building in April 1930 and “damaged the nearby McLellan’s Piggley Wigley and Hessler’s store’a total loss of \$170,000.”⁵⁷

However, amid the destruction by fire, the downtown continued to grow. A “garage boom” occurred in 1919 when some of the first commercial structures on Chase Street were built. The erection of the Brecht Brothers garage (later Morehead) at 19th & Stone, the Hugh Prichard two story brick, tile and concrete garage at 1701 Chase, and the E. S. Jones garage at 1622 Chase helped maintain an ample supply of cars in the city.⁵⁸ In 1923, the Falls City Auto Store opened as a supplement to these new garages opening.

On January 12, 1921, Company B, 134th Regiment of the National Guard mustered at Wahl’s Hall in Falls City and later moved to a new building at 1820 Towle.⁵⁹ The Weaver Hotel (Stephenson’s and now Grand Weaver), built in 1924 for approximately \$155,000, opened on June 29, 1925 and joined the ranks of the Union House (closed as hotel and converted to restaurant and rooming house) National Hotel (1901) at 13th and Stone, the Lindell at 16th and Chase, the European Hotel just off Stone on west 16th Street, and the Goolsby near the Burlington depot.⁶⁰ On March 31, 1928, thousands watched Babe White “The Human Fly” ascend the Weaver Hotel.⁶¹ This act drew much excitement to the downtown district. Also in 1928, the Rivoli Theater was completed for \$65,000, and a year later “talkies” were introduced in Falls City with movies such as “The Jazz Singer” and “Lights of New York.”⁶² At this point there were now four movie theaters in town. In addition to entertainment from movies, Falls City also gained another shopping venue when, in January 1929, Montgomery Ward opened a new two story brick department store at 1801 Stone.

Great Depression to Post-War Period: 1933-1957

All four banks in Falls City survived the 1933 Bank Holiday declared by President Franklin D. Roosevelt. As previously mentioned, the Nebraska State Bank merged with the Falls City State Bank in 1936. Another merger occurred in 1939, when First National Bank (now F&M Bank) purchased the Falls City State Bank and moved into its former building in 1941. The New Deal and its programs, particularly the Works Progress Administration (WPA) impacted the downtown area greatly. The WPA began construction on the National Guard Armory at 1820 Towle in 1935, which was then dedicated on December 11th, 1936.⁶³ Prichard Auditorium, another WPA project, was constructed in 1939 with stone from quarries

⁵² Ibid. pg. E-2.

⁵³ Ibid.

⁵⁴ Ibid. pg. E-3.

⁵⁵ Ibid.

⁵⁶ Ibid.

⁵⁷ Ibid.

⁵⁸ Ibid. pg. E-4.

⁵⁹ Ibid. pg. E-6.

⁶⁰ Ibid.

⁶¹ Ibid. pg. E-8.

⁶² Ibid. pg. E-7.

⁶³ Ibid. pg. F-2.

Falls City Commercial Historic District

Richardson County, Nebraska

Name of Property

County and State

south of town.⁶⁴ The city dedicated the Auditorium in 1940. The WPA also had a sewing room in their relief offices in the back room of a building at 15th & Stone.⁶⁵

On November 1, 1936, the Pawnee Royalty Company completed the first oil producing well in the State of Nebraska and received a \$1,500 bonus for producing a required 60-day run of fifty barrels per day on July 27, 1940, from the state government.⁶⁶ Fields that followed were the Shubert, Dawson and Snethen in Richardson County. In 1940, the Independent Pipe Line Company under E. H. Towle and the Bell Pipe Line Company organized to build a pipeline to carry oil from these fields to Falls City.⁶⁷ This provided a great economic boost to the city and spurred growth. Oscar C. Johnson, between 1931 and 1937, purchased the Empress (Sun), Rivoli and Electric theaters, and in 1941, opened the Oil City Theater and closed the Electric. In 1937, Hoy's Ideal Cleaners opened on west Harlan Street. In 1946, John Phillip Falter's "Falls City Christmas," which depicted the downtown at Christmas, was published as the cover of the December issue of *The Saturday Evening Post*. During World War II, the National Guard building entered service as a clothing manufacturing plant to help with the war effort. In 1951, the Missouri Pacific Railroad closed and laid off many of its shop employees, which was a blow to the town, but at the same time a new industry, Frontier Homes, started operations.

Falls City, 1958-Present

The setting and layout of the Falls City Commercial Historic District has remained largely unchanged, except for the addition of a few buildings, the remodeling of others, or destruction by fire, since 1958. In February of 1966 a fire damaged a restaurant, Earl May Store, and Drug Store and Electric shop. The fire started in the restaurant and then spread to the other buildings; however, all building survived.⁶⁸ Another fire hit downtown Falls City on the west side of Stone between 15th & 16th where a mini-park is now (1507-1513 Stone) on October 15, 1980. The fire damaged Norm's Cabinet Shop (1509 Stone) where the fire started, Wards (1505 Stone), Farmer's Café (1507 Stone), Armstrong "CB" Shop (1511), and the Hollens Building (1513 Stone).⁶⁹ L. W. Hoffman, in a memo dated October 28, 1980, indicated that Wards received mostly smoke damage with some damage to the parapet wall, Farmers Café and Norms Cabinet Shop were completely destroyed and demolished, that the Armstrong "CB" Shop needed to be demolished and that the Hollens Building was salvageable if the second story was demolished and removed.⁷⁰ In 1972, the old National Guard building at 1820 Towle was converted into City Hall and a Fire Station. Sometime after 1972, the city erected an outbuilding on the southeast corner of the parcel to house the Falls City Volunteer Ambulance squad.

Conclusion

Locally significant under National Register Criterion A, the Falls City Historic Commercial District is representative of the commercial, social, and civic/political development of Falls City and Richardson County, NE from 1857 to 1961. While the period of significance ends in 1961, the district continues to serve its historic role as the core of the city. It is eligible in the areas of Commerce, Politics/Government, and Social History. From its humble beginnings as a spot on the Lane Trail, the district grew into the county seat and a commercial hub. Downtown Falls City, as a regional center, took advantage of the dual rail lines that were established just south, and reached its peak by around 1957. The bulk of the commercial buildings

⁶⁴ Ibid.

⁶⁵ Ibid.

⁶⁶ Falls City Centennial Association. *Falls City Centennial*, pg. 67.

⁶⁷ Ibid.

⁶⁸ L. W. Hoffman. L.W. Hoffman and George Mehuron Associated Consulting Engineers. "Report on Fire Damage to Drug Store Party Wall, Earl May Store, and Restaurant at Falls City, Nebraska, April 28, 1966." Lincoln Nebraska, 1966. [accessed June 24, 2013 at Towle Realty Co, 110 W. 17th, Falls City, NE 68355].

⁶⁹ Steve Lincoln. State Fire Marshall. State of Nebraska. "Fire Investigation Report#374-80." October 29, 1980 and Letter/Memo to Towle Realty Co to the attention of Bernie Kreifels from L.W. Hoffman, Structural Engineer, Aitken Hazen, Hoffman and Miller P.C. Architects and Engineers, 10-28-1980. [both accessed 6-24-2013 at Towle Realty Co, 110 W. 17th, Falls City, NE 68355].

⁷⁰ Letter/Memo to Towle Realty Co to the attention of Bernie Kreifels from L.W. Hoffman, Structural Engineer, Aitken Hazen, Hoffman and Miller P.C. Architects and Engineers, 10-28-1980. [accessed 6-24-2013 at Towle Realty Co, 110 W. 17th, Falls City, NE 68355].

Falls City Commercial Historic District

Richardson County, Nebraska

Name of Property

County and State

were erected between 1880 and 1926. As the central core of community and county life, the district saw many of the important political and social events that shaped Falls City's development. From the four banks that started in downtown to the WPA Auditorium and National Guard Armory projects, the district has served as the center of life for Falls City and the surrounding community.

Falls City Commercial Historic District
Name of Property

Richardson County, Nebraska
County and State

9. Major Bibliographic References

Bibliography (Insert bibliography here – cite the books, articles and other sources used in preparing this form.)

R. Keim, Ed./ Pub. "Illustrated History of Richardson County: 1887-1919." Addendum to: *Falls City Journal*. October 15, 1919.

Dr. Layne Elyers. OHIBN Study. "Gehling Theater." *Opera House Buildings in Nebraska 1867-1918*. 1988 National Register of Historic Places Nomination.

"Braniff Jetliner Falls into Field on Schawang Farm.," *Falls City Journal*. August 8, 1966.

"Falls City, January 1885." 1885 *Sanborn Fire Insurance Map*. Sanborn Map & Publishing Co. Limited (New York, 1885).

"Falls City August 1889." 1889 *Sanborn Fire Insurance Map*. Sanborn Map & Publishing Co. Limited (New York, 1889).

"Falls City April 1894." 1894 *Sanborn Fire Insurance Map*. Sanborn Map & Publishing Co. Limited (New York, 1894).

"Falls City April 1900." 1900 *Sanborn Fire Insurance Map*. Sanborn Map & Publishing Co. Limited (New York, 1900).

"Falls City August 1909." 1900 *Sanborn Fire Insurance Map*. Sanborn Map & Publishing Co. Limited (New York, 1909).

"Falls City February 1916." 1916 *Sanborn Fire Insurance Map*. Sanborn Map & Publishing Co. Limited (New York, 1916).

"Falls City January 1926." 1926 *Sanborn Fire Insurance Map*. Sanborn Map & Publishing Co. Limited (New York, 1926).

"Falls City January 1926." 1926 *Sanborn Fire Insurance Map with Revisions in 1930, 1935, and 1941*. . Sanborn Map & Publishing Co. Limited (New York, 1926).

Falls City Centennial Association, Inc. *Falls City Centennial: 1857-1957*. (Fostoria, Ohio: John B. Rogers Publishing Co., 1957).

Harold C. Prichard. "The Hundred Year History of Falls City." *The Falls City Journal*. Monday, August 26, 1857. Sections A-F. [Accessed May 6, 2013 at Falls City Library & Arts Center, 1400 Stone Street, Falls City, NE 68355].

Letter/Memo to Towle Realty Co to the attention of Bernie Kreifels from L.W. Hoffman, Structural Engineer, Aitken Hazen, Hoffman and Miller P.C. Architects and Engineers, 10-28-1980. [accessed 6-24-2013 at Towle Realty Co, 110 W. 17th, Falls City, NE 68355.]

L. W. Hoffman. L.W. Hoffman and George Mehuron Associated Consulting Engineers. "Report on Fire Damage to Drug Store Party Wall, Earl May Store, and Restaurant at Falls City, Nebraska, April 28, 1966." Lincoln Nebraska, 1966. [accessed June 24, 2013 at Towle Realty Co, 110 W. 17th, Falls City, NE 68355].

Lewis C. Edwards. *History of Richardson County Nebraska: Its Peoples, Industries, and Institutions, Illustrated Volume I* (Indianapolis, IN: B. F. Bowen & Co., Inc., 1917).

Ron Kirkendall. "You Can Still Hear the Music." March 28, 1984. (Falls City, Nebraska, 1984), pg 1-4. [Accessed 6/26/2013 at Falls City Area Chamber of Commerce & Main Street Falls City, 1705 Stone St., Falls City, NE and at True Value Hardware, 1519 Stone St, Falls City, NE 68355].

Steve Lincoln. State Fire Marshall. State of Nebraska. "Fire Investigation Report#374-80." October 29, 1980 and [accessed 6-24-2013 at Towle Realty Co, 110 W. 17th, Falls City, NE 68355].

Falls City Commercial Historic District
Name of Property

Richardson County, Nebraska
County and State

Previous documentation on file (NPS):

- preliminary determination of individual listing (36 CFR 67 has been requested)
- previously listed in the National Register
- previously determined eligible by the National Register
- designated a National Historic Landmark
- recorded by Historic American Buildings Survey #
- recorded by Historic American Engineering Record #
- recorded by Historic American Landscape Survey #

Primary location of additional data:

- State Historic Preservation Office
- Other State agency
- Federal agency
- Local government
- University
- Other (Name of repository)
 Falls City Main Street

Historic Resources Survey Number (if assigned): Multiple, see Building Inventory spreadsheet in Section 7

10. Geographical Data

Acreage of property 45 USGS Quadrangle Falls City Quadrangle

UTM References

Datum (indicated on USGS map): _____

NAD 1927 or NAD 1983

	Zone		Easting	Northing
1.	15		277728.71	4438076.62
2.	15		277720.63	4437862.60
3.	15		277858.46	4437852.49
4.	15		277855.58	4437740.94
5.	15		277898.79	4437740.94
6.	15		277898.79	4437631.03
7.	15		277940.76	4437625.69
8.	15		277945.58	4437592.30
9.	15		277984.48	4437588.01
10.	15		277995.52	4437676.50
11.	15		278046.06	4437672.40
12.	15		278050.37	4437733.72
13.	15		278093.47	4437728.11
14.	15		278100.28	4438061.78
15.	15		278061.13	4438064.26
16.	15		278052.81	4438109.91
17.	15		278005.37	4438111.02
18.	15		278001.67	4438065.86
19.	15		277952.49	4438070.80
20.	15		277951.25	4437993.93
21.	15		277908.25	4437999.70
22.	15		277906.48	4437959.49
23.	15		277814.42	4437963.63
24.	15		277813.73	4438071.14

Falls City Commercial Historic District
Name of Property

Richardson County, Nebraska
County and State

Verbal Boundary Description (Describe the boundaries of the property.)

The boundary of the district begins on the southeast corner of 19th and Towle, moving to the east. The boundary heads south at 19th and Barada, east at 18th and Barada, north at 18th and Chase, east behind the Erath Building at 120 W. 18th until it reached the alley between Chase and Stone, north along this alley to 19th, east to Stone, north around the former Morehead Garage at 1900-1910 Stone and back to 19th, east on 19th, south on Harlan, west on 16th, south at the alley between Stone and Harlan, west on 15th, north on Chase, west on 16th, north along the alley between Barada and Chase, west on 17th, north on Towle.

Boundary Justification (Explain why the boundaries were selected.)

The Falls City Commercial Historic District's boundaries include the areas that most significantly contribute to the significance of the area as the center of civic, social, commercial, and community life.

11. Form Prepared By

name/title Eric Barr, Executive Director
organization Falls City Chamber Main Street date September 9, 2013
street & number 1705 Stone Street telephone 402-245-4228
city or town Falls City state NE zip code 68355
email directorccms@sentco.net

Additional Documentation

Submit the following items with the completed form:

- **Maps:** A **USGS map** or equivalent (7.5 or 15 minute series) indicating the property's location.
- **Sketch map** for historic districts and properties having large acreage or numerous resources. Key all photographs to map.
- **Additional items:** (Check with the SHPO for any additional items.)

Photographs

Submit clear and descriptive photographs. The size of each image must be 1600x1200 pixels (minimum), 3000x2000 preferred, at 300 ppi (pixels per inch) or larger. Key all photographs to the sketch map. Each photograph must be numbered and that number must correspond to the photograph number on the photo log. For simplicity, the name of the photographer, photo date, etc. may be listed once on the photograph log and doesn't need to be labeled on every photograph.

Photo Log

Name of Property Falls City Commercial Historic District
City or Vicinity Falls City County Richardson State Nebraska
Photographer Eric Barr Date Photographed July 2013

Description of Photograph(s) and number, include description of view indicating direction of camera.

Photo 1 of 28. NE_RicharsonCounty_FallsCityCommercialHistoricDistrict_001
West side of 1800 block of Stone Street. Camera facing northwest.

Photo 2 of 28. NE_RicharsonCounty_FallsCityCommercialHistoricDistrict_002
West side of 1700 block of Stone Street. Camera facing northwest.

Photo 3 of 28. NE_RicharsonCounty_FallsCityCommercialHistoricDistrict_003
East side of 1600 block of Stone Street. Camera facing northeast.

Falls City Commercial Historic District

Richardson County, Nebraska

Name of Property

County and State

Photo 4 of 28. NE_RicharsonCounty_FallsCityCommercialHistoricDistrict_004
West side of Stone Street. Camera facing southwest from 17th Street.

Photo 5 of 28. NE_RicharsonCounty_FallsCityCommercialHistoricDistrict_005
West side of 1600 block of Stone Street. Camera facing northwest.

Photo 6 of 28. NE_RicharsonCounty_FallsCityCommercialHistoricDistrict_006
West side of 1500 block of Stone Street. Camera facing southwest.

Photo 7 of 28. NE_RicharsonCounty_FallsCityCommercialHistoricDistrict_007
East side of 1500 block of Stone Street. Camera facing southeast.

Photo 8 of 28. NE_RicharsonCounty_FallsCityCommercialHistoricDistrict_008
East side 1800 block of Stone Street. Camera facing southeast.

Photo 9 of 28. NE_RicharsonCounty_FallsCityCommercialHistoricDistrict_009
West side 1600 block of Chase Street. Camera facing southwest.

Photo 10 of 28. NE_RicharsonCounty_FallsCityCommercialHistoricDistrict_010
F&M Bank Building (FC State Bank) at the northwest corner of 16th and Stone Streets. Camera facing west.

Photo 11 of 28. NE_RicharsonCounty_FallsCityCommercialHistoricDistrict_011
120 E. 18th Street. Camera facing northwest.

Photo 12 of 28. NE_RicharsonCounty_FallsCityCommercialHistoricDistrict_012
1801-1803 Stone Street. Camera facing southwest.

Photo 13 of 28. NE_RicharsonCounty_FallsCityCommercialHistoricDistrict_013
Erath Building at the northeast corner of 18th and Chase Streets. Camera facing north.

Photo 14 of 28. NE_RicharsonCounty_FallsCityCommercialHistoricDistrict_014
Grand Weaver Hotel at the northeast corner of 18th and Stone Streets. Camera facing northeast.

Photo 15 of 28. NE_RicharsonCounty_FallsCityCommercialHistoricDistrict_015
1701 Chase Street. Camera facing northwest.

Photo 16 of 28. NE_RicharsonCounty_FallsCityCommercialHistoricDistrict_016
Slocum Building at 1600 Stone Street. Camera facing east.

Photo 17 of 28. NE_RicharsonCounty_FallsCityCommercialHistoricDistrict_017
Halbert Building at 111-113 E. 17th Street. Camera facing southeast.

Photo 18 of 28. NE_RicharsonCounty_FallsCityCommercialHistoricDistrict_018
117 E. 17th Street. Camera facing southeast.

Photo 19 of 28. NE_RicharsonCounty_FallsCityCommercialHistoricDistrict_019
1900-1910 Stone Street. Camera facing northeast.

Photo 20 of 28. NE_RicharsonCounty_FallsCityCommercialHistoricDistrict_020
Brown's Shoe Fit Co. and Memory Lane Décor at 1615 & 1617 Stone Street. Camera facing west.

Falls City Commercial Historic District

Richardson County, Nebraska

Name of Property

County and State

Photo 21 of 28. NE_RicharsonCounty_FallsCityCommercialHistoricDistrict_021
F&M Bank Drive Thru at the northwest corner of 15th and Stone Streets. Camera facing west.

Photo 22 of 28. NE_RicharsonCounty_FallsCityCommercialHistoricDistrict_022
Richardson County Bank Building at the southeast corner of 17th and Stone Streets. Camera facing southeast.

Photo 23 of 28. NE_RicharsonCounty_FallsCityCommercialHistoricDistrict_023
Richardson County Courthouse. Camera facing northeast from the northeast corner of 17th and Stone Streets.

Photo 24 of 28. NE_RicharsonCounty_FallsCityCommercialHistoricDistrict_024
Richardson County Courthouse. Camera facing east from Stone Street.

Photo 25 of 28. NE_RicharsonCounty_FallsCityCommercialHistoricDistrict_025
North side of 17th Street between Barada and Chase Streets. Camera facing northeast.

Photo 26 of 28. NE_RicharsonCounty_FallsCityCommercialHistoricDistrict_026
West and south (rear) facades of National Guard Armory/City Hall at 1820 Towle Street. Camera facing northeast.

Photo 27 of 28. NE_RicharsonCounty_FallsCityCommercialHistoricDistrict_027
North (main) façade of National Guard Armory/City Hall at 1820 Towle Street. Camera facing southwest.

Photo 28 of 28. NE_RicharsonCounty_FallsCityCommercialHistoricDistrict_028
Prichard Auditorium at 312 W. 17th Street. Camera facing north.

Paperwork Reduction Act Statement: This information is being collected for applications to the National Register of Historic Places to nominate properties for listing or determine eligibility for listing, to list properties, and to amend existing listings. Response to this request is required to obtain a benefit in accordance with the National Historic Preservation Act, as amended (16 U.S.C.460 et seq.).
Estimated Burden Statement: Public reporting burden for this form is estimated to average 100 hours per response including time for reviewing instructions, gathering and maintaining data, and completing and reviewing the form. Direct comments regarding this burden estimate or any aspect of this form to the Office of Planning and Performance Management. U.S. Dept. of the Interior, 1849 C. Street, NW, Washington, DC.

United States Department of the Interior
National Park Service

National Register of Historic Places
Continuation Sheet

Falls City Commercial Historic District
Name of Property
Richardson County, Nebraska
County and State
Name of multiple listing (if applicable)

Section number Additional InformationPage 1

List of Figures:

1. 1423 Stone looking southwest, c. 1900-1910
2. West 1600 block of Stone looking southwest, 1910
3. Falls City Circus on 1600 block Stone looking northeast, c. 1890-1918
4. 1500 block of Stone looking north, 1907
5. East Stone, c. 1860s to 1870s
6. 1600 block of Stone showing City Hotel and looking northeast, 1910
7. 1700 block of Stone looking south, 1914
8. Postcard showing 1700 Stone looking north, 1937
9. Falls City Circus on 1600 block of Stone looking northeast, 1910
10. Postcard of Richardson County Courthouse looking northeast, 1930
11. 1700 block of Stone looking north, 1956
12. 1600 block of Stone looking north, c. 1910
13. 1500 block of Stone looking southwest, c. 1910
14. Weaver Hotel looking northeast, c. 1930

United States Department of the Interior
National Park Service

National Register of Historic Places
Continuation Sheet

Falls City Commercial Historic District
Name of Property
Richardson County, Nebraska
County and State
Name of multiple listing (if applicable)

Section number Additional Information

Page 2



Figure 1

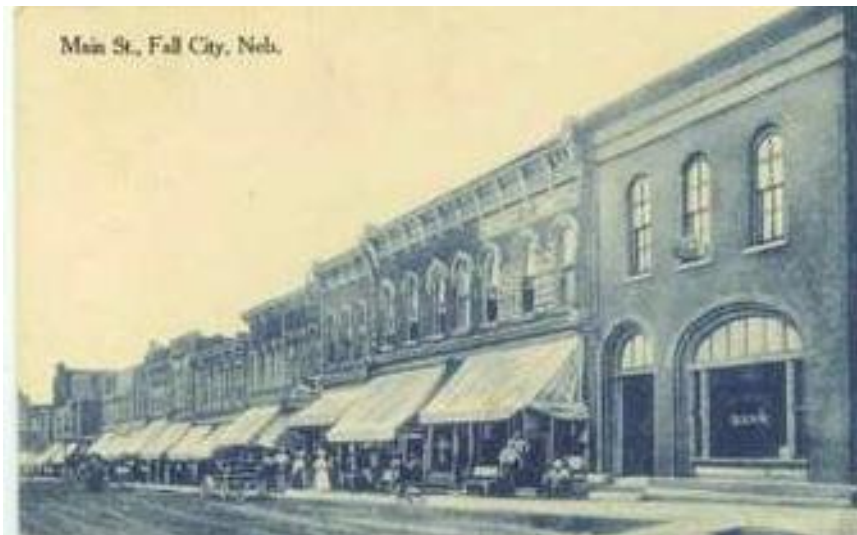


Figure 2

United States Department of the Interior
National Park Service

Falls City Commercial Historic District
Name of Property
Richardson County, Nebraska
County and State

National Register of Historic Places
Continuation Sheet

Name of multiple listing (if applicable)

Section number Additional Information

Page 3

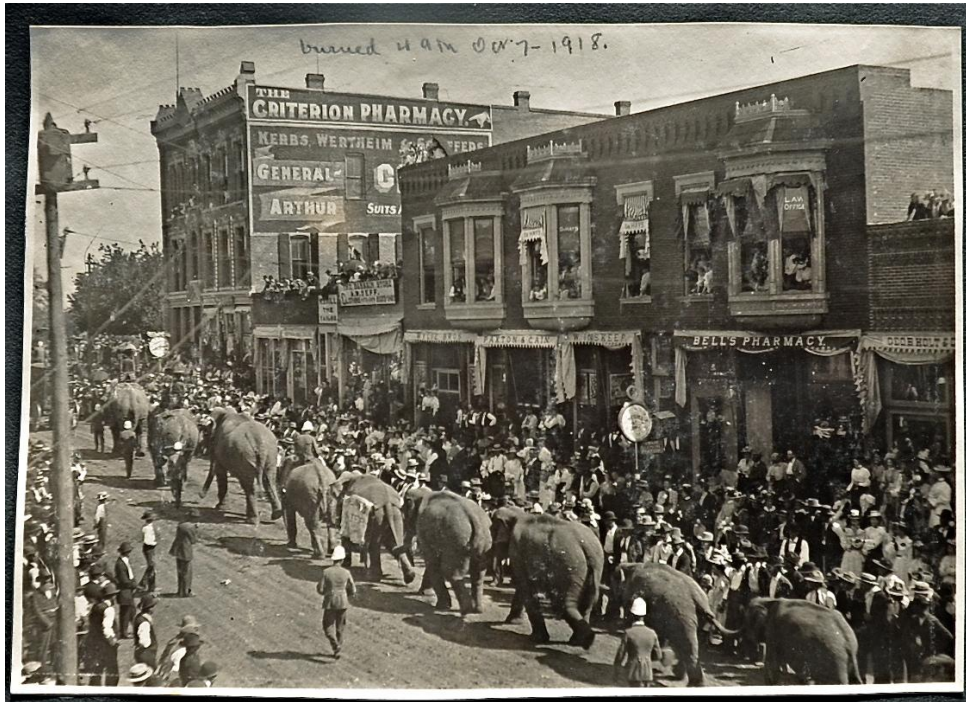


Figure 3



Figure 4

**United States Department of the Interior
National Park Service**

**National Register of Historic Places
Continuation Sheet**

Falls City Commercial Historic District
Name of Property
Richardson County, Nebraska
County and State
Name of multiple listing (if applicable)

Section number Additional Information

Page 4



Figure 5



Figure 6

**United States Department of the Interior
National Park Service**

**National Register of Historic Places
Continuation Sheet**

Falls City Commercial Historic District
Name of Property
Richardson County, Nebraska
County and State
Name of multiple listing (if applicable)

Section number Additional Information

Page 5



Figure 7



Figure 8

United States Department of the Interior
National Park Service

Falls City Commercial Historic District
Name of Property
Richardson County, Nebraska
County and State

National Register of Historic Places
Continuation Sheet

Name of multiple listing (if applicable)

Section number Additional Information

Page 6

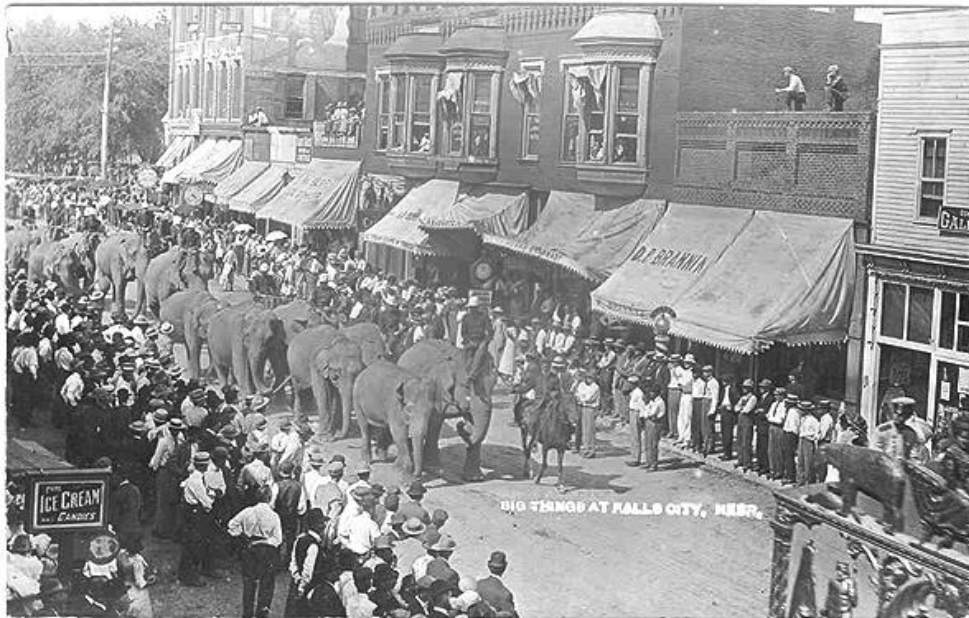


Figure 9



Figure 10

United States Department of the Interior
National Park Service

National Register of Historic Places
Continuation Sheet

Falls City Commercial Historic District
Name of Property
Richardson County, Nebraska
County and State
Name of multiple listing (if applicable)

Section number Additional Information

Page 7



Figure 11

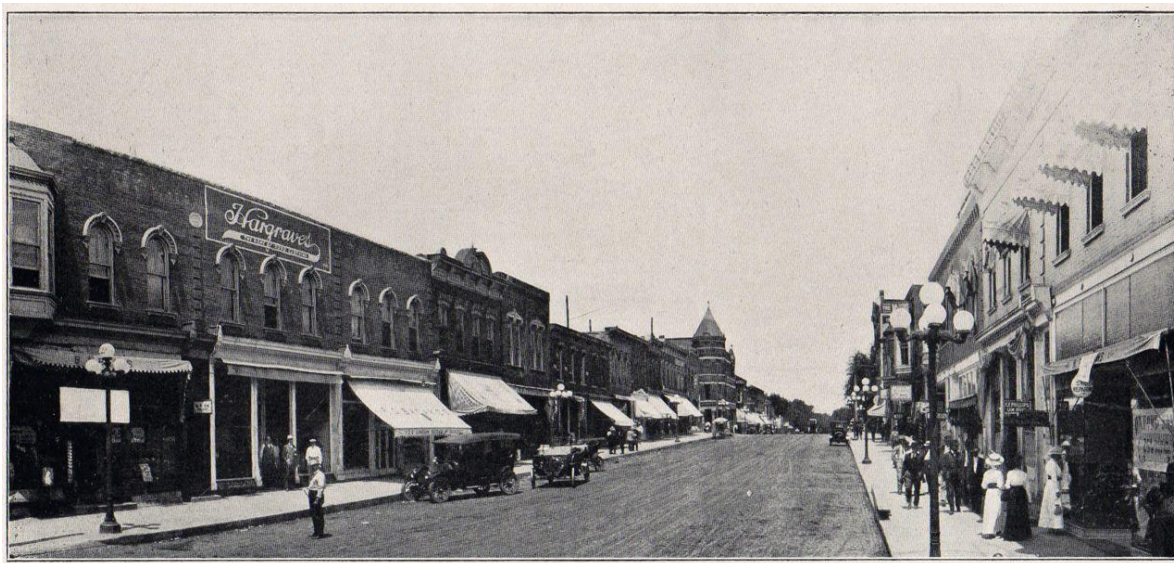


Figure 12

**United States Department of the Interior
National Park Service**

**National Register of Historic Places
Continuation Sheet**

Falls City Commercial Historic District
Name of Property
Richardson County, Nebraska
County and State
Name of multiple listing (if applicable)

Section number Additional Information

Page 8



STONE STREET, LOOKING SOUTH, FALLS CITY.

Figure 13



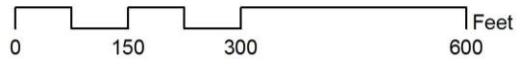
Figure 14

Falls City Commercial Historic District Boundary Map and Building Numbers

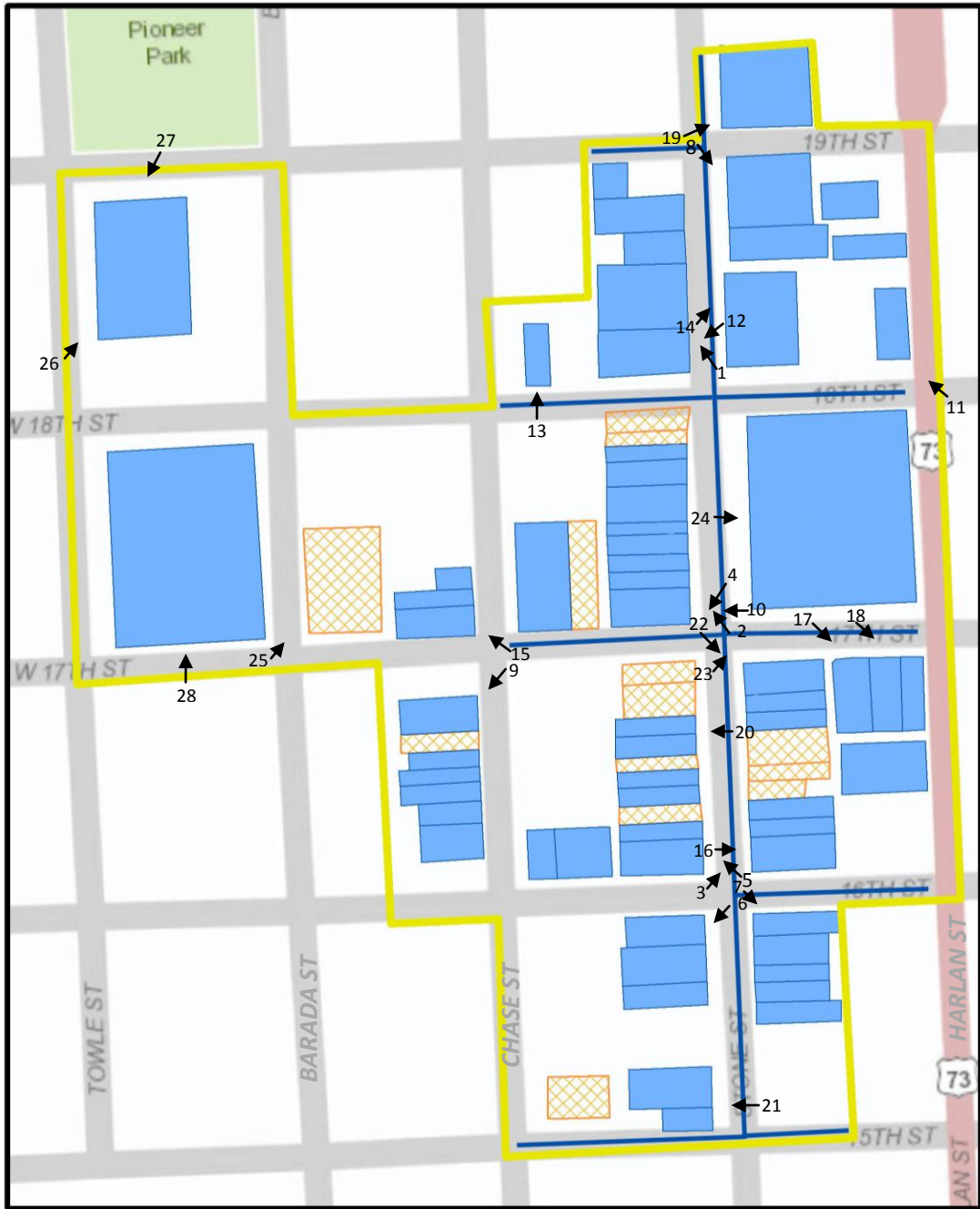


Legend

- Contributing
- NonContributing
- District Boundary
- Brick Street

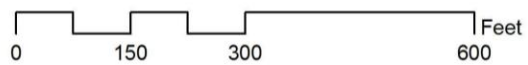


Falls City Commercial Historic District Photo Key

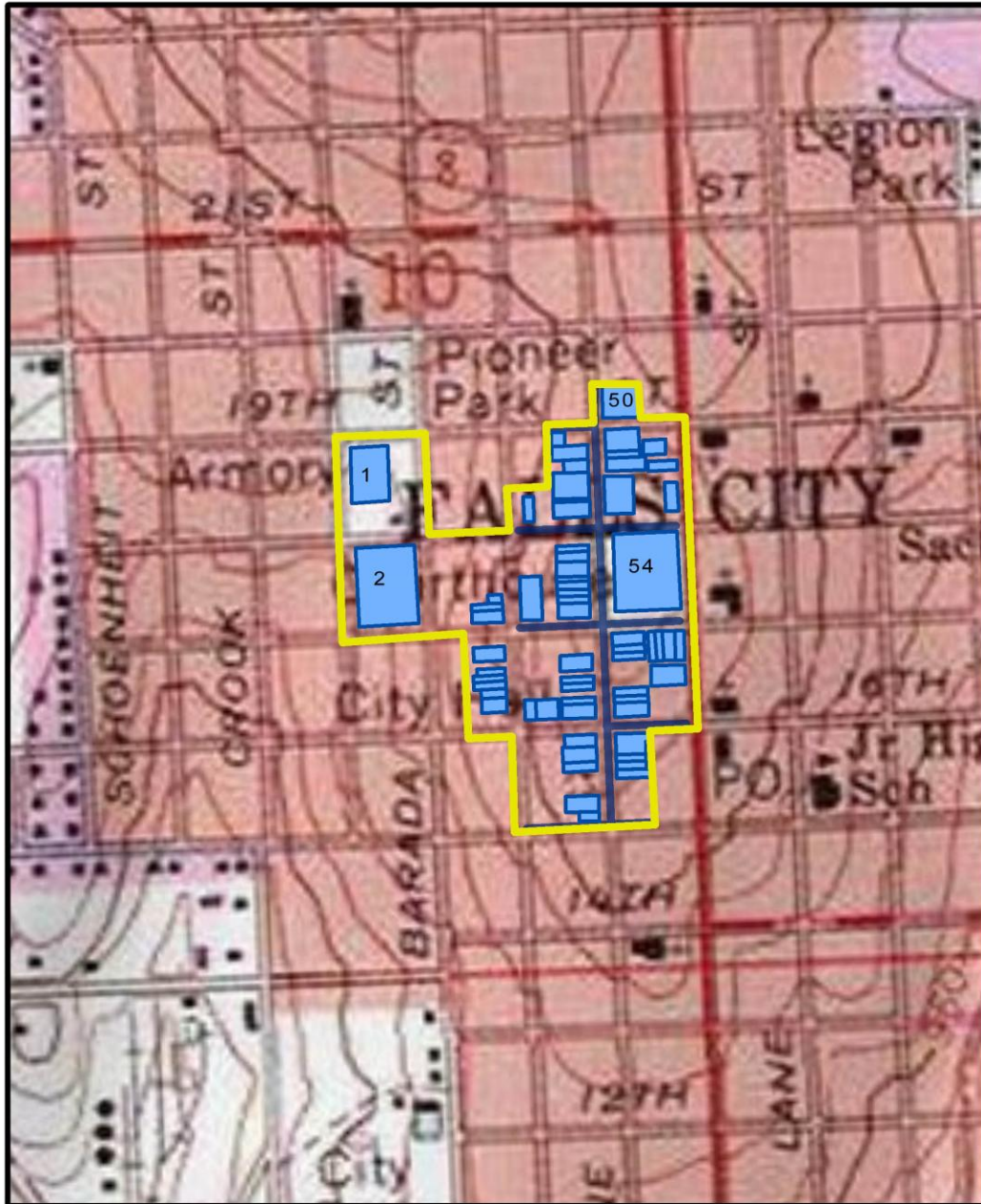


Legend

- Contributing
- NonContributing
- District Boundary
- Brick Street





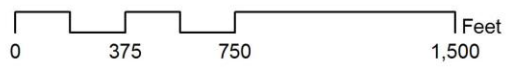
Falls City Commercial Historic District



USGS Quadrangle Map: Falls City
1:6,000

Legend

-  Contributing Resources
-  District Boundary



Ronzo's Shoe Shop

Wash Bay

The Buggy Wash

RECYCLE

BARBOO

TATTOOS





F&M Bank
12:59

F&M Bank

NIGHT DEPOSIT

BAKERY COFFEE SHOP





HOTEL

AAC

Mary's
GOURMET

RadioShack

Yesterday's Closet

SALE
50%



Libraries

City

Place





FALTER'S

1926

GREAT CHINA
DUPPER

enjoy
Spring

Mary's

Life
SPIRIT



CEHLING

92

RYAN BLD

HARDWARE

CHANEY'S FURNITURE

CHANEY FURNITURE

"We sell for Less Because we buy for Less"

LA FIESTA

HERB BLOCK



ATTORNEY

Chase Furniture

LA FIESTA

H&R BLOCK

ST. JOHN ST



Summer Sizzles!



OH

FALLS CITY AUTO

FALLS CITY
AUTO SUPPLY
EST 1923

WIX





JOY'S

Armstrong
Plumbing Inc.

JIM HILL'S

JOY'S
SHOP

WELDON

JOY'S
AIR COND.





F&M Bank

12:59

F&M Bank

ATM NIGHT DEPOSIT





Falls City Pharmacy

Falls City Pharmacy

LYDIA BRUN WOODS
MEMORIAL LIBRARY
A.D. 1912

1928



SOUTHEAST NEBRASKA
INSURANCE

closed both
THU 2:05 PM

PROGRESSIVE



Ranger's
Shoe Shop



ERATH


Arbor
education & training





1924
GRAND WEAVER
HOTEL

Hotel
BARBER SHOP



JIM BILLY'S
AUTO SALES SERVICE
REPAIRS & TUNING

JIM BILLY'S
AUTO SALES SERVICE
REPAIRS & TUNING

1701

CHASE

Armano
REPAIRS & SERVICE



1929
SLOCUM

KTNC
1230 RADIO

Sunny
101.3

AM 1230
KTNC RADIO

G-G'S
FASHIONS

SALE
50% off

The Spirit
Store

etc.
1604 Stone
an owner of Stone's Clean
Featuring New and
Designer Merchandise

SALE
SALE
SALE
SALE
SALE

19 CUSTER II

LICHTY
TUBACH
SIKORA
INSURANCE AGENCY

113

Drill-Well, LLC

HALBERT, JOHNSON
& HALBERT, L.L.C.

HALBERT
BUILDING





KONSTANTINOS
PIZZA

PIZZA
OPEN
Daily
Lunch Buffet
\$6.95
includes drink

LIC
INSU



A three-story brick industrial building with a prominent corner. The building features large, multi-paned windows on the second and third floors, and a ground floor with large glass display windows and a white roll-up door. A green street lamp stands on the sidewalk in front of the building.

A red and white pickup truck with "DODGE RAM" written on the back, parked on the street.

A white pickup truck with a dark trailer, parked on the street.

A dark pickup truck parked on the street.

A dark sedan parked on the street.

A white truck parked in the background.



1930

Edward Jones INVESTMENTS

Radio
red wing rockport born clar nat
OPEN

Ally

STAVENHILL BUILDERS

first national bank
DRIVE IN

ENTRANCE



OPEN

BILL'S
USED
FURNITURE





A large, multi-story brick building with classical architectural details, situated on a street corner. The building features a prominent corner entrance with columns and a pediment. The ground floor has arched windows, and the upper floors have rectangular windows. A street lamp stands in the foreground, and a red car is parked on the left. To the right, there are signs for 'A&G' and 'Mary's'.

A&G

Mary's

20





RICHARDSON COUNTY



HSG CONTRACTING
102-245-5287
FOAM ROOFING SYSTEMS
ROOF COATING
SPRAY FOAM INSULATION

HAWORTH SEAMLESS GUTTERS
102-245-5287

HAWORTH
SEAMLESS GUTTERS
402-245-7403
INSTALLATION & REPAIRS

DODGE 4x4







LEANDER C.
AND
LAURA L.
PRICHARD
MEMORIAL
AUDITORIUM

PRICHARD AUDITORIUM

AKY
22 FOOD PANTRY
27 WEDDING VENUE

UNITED STATES DEPARTMENT OF THE INTERIOR
NATIONAL PARK SERVICE

NATIONAL REGISTER OF HISTORIC PLACES
EVALUATION/RETURN SHEET

REQUESTED ACTION: NOMINATION

PROPERTY NAME: Falls City Commercial Historic District

MULTIPLE NAME:

STATE & COUNTY: NEBRASKA, Richardson

DATE RECEIVED: 11/15/13 DATE OF PENDING LIST: 12/14/13
DATE OF 16TH DAY: 12/30/13 DATE OF 45TH DAY: 1/01/14
DATE OF WEEKLY LIST:

REFERENCE NUMBER: 13001023

REASONS FOR REVIEW:

APPEAL: N DATA PROBLEM: N LANDSCAPE: N LESS THAN 50 YEARS: N
OTHER: N PDIL: N PERIOD: N PROGRAM UNAPPROVED: N
REQUEST: Y SAMPLE: N SLR DRAFT: N NATIONAL: N

COMMENT WAIVER: N

ACCEPT RETURN REJECT 12/31/2013 DATE

ABSTRACT/SUMMARY COMMENTS:

△ P.O.S.

RECOM./CRITERIA Accept A

REVIEWER J. Cobble DISCIPLINE _____

TELEPHONE _____ DATE _____

DOCUMENTATION see attached comments Y/N see attached SLR Y/N

If a nomination is returned to the nominating authority, the nomination is no longer under consideration by the NPS.



November 7, 2013

J. Paul Loether
National Register—National Historic Landmarks Programs
National Park Service
1201 "I" Street NW, 8th Floor
Washington, DC 20005

RE: Falls City Commercial Historic District
Falls City, Richardson County, Nebraska

Dear Mr. Loether:

The enclosed disk contains the true and correct copy of the nomination for the above referenced property to the National Register of Historic Places. This form has met all notification and other requirements as established in 36 CFR 60.

If you have any questions concerning this nomination, please let me know.

Sincerely,

A handwritten signature in blue ink that reads "L. Robert Puschendorf".

L. Robert Puschendorf
Deputy State Historic Preservation Officer

Enclosure

1500 R Street
PO Box 82554
Lincoln, NE 68501-2554
p: (800) 833-6747
(402) 471-3270
f: (402) 471-3100
www.nebraskahistory.org