

437

APR 24 1989

United States Department of the Interior
National Park Service

NATIONAL REGISTER

National Register of Historic Places Registration Form

This form is for use in nominating or requesting determinations of eligibility for individual properties or districts. See instructions in *Guidelines for Completing National Register Forms* (National Register Bulletin 16). Complete each item by marking "x" in the appropriate box or by entering the requested information. If an item does not apply to the property being documented, enter "N/A" for "not applicable." For functions, styles, materials, and areas of significance, enter only the categories and subcategories listed in the instructions. For additional space use continuation sheets (Form 10-900a). Type all entries.

1. Name of Property

historic name Rock Castle School
other names/site number _____

2. Location

street & number Prospect Street N/A not for publication
city, town Webster N/A vicinity
state Massachusetts code 025 county Worcester code 027 zip code _____

3. Classification

Ownership of Property	Category of Property	Number of Resources within Property	
<input checked="" type="checkbox"/> private	<input checked="" type="checkbox"/> building(s)	Contributing	Noncontributing
<input type="checkbox"/> public-local	<input type="checkbox"/> district	<u>1</u>	<u>0</u> buildings
<input type="checkbox"/> public-State	<input type="checkbox"/> site	_____	_____ sites
<input type="checkbox"/> public-Federal	<input type="checkbox"/> structure	_____	_____ structures
	<input type="checkbox"/> object	_____	_____ objects
		<u>1</u>	<u>0</u> Total

Name of related multiple property listing: N/A
Number of contributing resources previously listed in the National Register N/A

4. State/Federal Agency Certification

As the designated authority under the National Historic Preservation Act of 1966, as amended, I hereby certify that this nomination request for determination of eligibility meets the documentation standards for registering properties in the National Register of Historic Places and meets the procedural and professional requirements set forth in 36 CFR Part 60. In my opinion, the property meets does not meet the National Register criteria. See continuation sheet.

Executive Director, Massachusetts Historical Commission 4/18/89
Signature of certifying official Valerie A. Taenage Date
State Historic Preservation Officer
State or Federal agency and bureau _____

In my opinion, the property meets does not meet the National Register criteria. See continuation sheet.

Signature of commenting or other official _____ Date _____
State or Federal agency and bureau _____

5. National Park Service Certification

I, hereby, certify that this property is:

entered in the National Register. Beth L. Sarge 6-7-89
 See continuation sheet. _____
 determined eligible for the National Register. See continuation sheet. _____
 determined not eligible for the National Register. _____
 removed from the National Register. _____
 other, (explain:) _____

Sov Signature of the Keeper Date of Action _____

6. Function or Use Rock Castle School, Webster, Massachusetts

Historic Functions (enter categories from instructions)

Current Functions (enter categories from instructions)

Education/school

Domestic/multiple dwelling

7. Description

Architectural Classification
(enter categories from instructions)

Materials (enter categories from instructions)

Late Victorian/Italianate

foundation granite

walls granite concrete

roof asphalt

other wood

Describe present and historic physical appearance.

The Rock Castle School in Webster, Massachusetts, stands on the west side of Prospect Street, south of its junction with East Main Street (Route 12). The area surrounding the school building consists primarily of freestanding residences; immediately behind (west), at the base of a steep embankment, is an area of mixed commercial and residential buildings.

The school building is a two-story masonry structure faced on all elevations with random granite ashlar and brick trimmings consisting of quoins at window frames and building corners as well as a brick and wood cornice. The building is rectangular in plan and is enclosed by an asphalt-covered hip roof with ornamental gables at the heads of shallow pavilions on the east (facade) and west elevations. Windows originally contained wood-frame sash that varied in configuration between 4/4 in narrow openings and 6/6 in large openings; second-story windows have arched heads. As part of the recent rehabilitation, new aluminum frame windows were installed in configurations matching the originals.

Although original plans of the building have not been found and the interior has been substantially altered, it appears that the first and second floors of the building originally had two major classroom/lecture rooms each with coatrooms and offices at the northeast and southeast corners of the building. Two adjacent staircases (only one of which remains), contained within the central pavilion, provide access to the rooms. In the mid-20th century, the first-story plan was severely altered by the removal of partitions between classrooms and by the reconstruction of new partitions that divide the interior into three classrooms. At the second story, coatrooms and offices have been connected by the removal of partitions. Prior to the rehabilitation, both the first and second stories suffered extensive water damage from roof leaks over the central portion of the structure and from water leaks at the building's cornice. The north wing of the building was added in 1948. It was built as a single span with concrete block walls and a poured concrete floor.

The facade (east elevation) is symmetrical, consisting of a central pedimented pavilion flanked by shallow end pavilions. At the first story of the central pavilion, paired entries are set beneath a single hood supported on ornamental brackets. Each doorway contains a single panelled door with a glass panel (dating from the recent rehabilitation). At the second story, the central pavilion has two arched windows, while the pediment contains See continuation sheet

United States Department of the Interior
National Park ServiceNational Register of Historic Places
Continuation SheetRock Castle School
Webster, MassachusettsSection number 7 Page 1

end pavilion contains an entry sheltered by a hood set on ornamental brackets. Each entry contains a set of panelled double doors with glass panes (also dating from the recent rehabilitation). At the second story, above each entry, is an arched window opening. Between the two end pavilions and the central pavilion are narrow wall surfaces containing one narrow window per story. Alterations to the facade (prior to the recent rehabilitation) include replacement of original wood stoops with concrete stoops. As part of the rehabilitation, the concrete stoops were covered by wooden porches.

The south elevation contains four evenly spaced bays with one window per bay at the first and second stories; an exception exists in the easternmost bay of the second story where an original blind window exists. At the basement, this elevation contains an added window near its west end (converted from a doorway as part of the recent rehabilitation).

The rear (west) elevation has the same basic arrangement of central and end pavilions as the facade; however, it stands on a basement that is fully above ground. The central pavilion contains a window and an entry at the basement, two windows per story at the first and second stories, and an oculus in the pediment. The basement entry contains a six-panel metal door (installed during the recent rehabilitation). Each end pavilion contain one window per story. Wall sections between the central and end pavilions contains one window per story. Wall sections between the central and end pavilions contain one single window at the basement (the northernmost one added during the recent rehabilitation) and one double window per story at the first and second stories.

The north elevation is covered at the first story by a concrete-block addition (1948). Only the second story of the original is exposed; it is the mirror image of the south elevation.

The north addition is a one-story structure built of concrete blocks covered with stucco and enclosed by a flat tar and gravel roof. Elevations were originally unornamented but, when apartments were built within the addition as part of the recent rehabilitation, fenestration was added. The facade (east elevation) of the addition contains two entries beneath a common hood flanked by four windows. The rear (west) elevation of the addition has two symmetrical entries at either end of the elevation; each entry is flanked by two windows. Window and door openings of the addition are framed with bricks. The south elevation of the addition is blank.

Note: In 1985, the building was rehabilitated as part of the Secretary of the Interior's Historic Preservation Certification program.

continued

**United States Department of the Interior
National Park Service**

National Register of Historic Places Continuation Sheet

Rock Castle School
Webster, Massachusetts

Section number 7 Page 2

As part of the rehabilitation, the interior, including the basement, was converted to apartments. An L-shaped corridor was added at each floor providing access to apartments. Existing partitions were removed and new walls constructed to create four apartments per floor. Four apartments were constructed within the north wing. Exterior changes included new doors in entries, new sash in window openings, wood porches over added concrete stoops, and a stucco surface over the north wing.

**United States Department of the Interior
National Park Service**

**National Register of Historic Places
Continuation Sheet**

Section number 7 Page 3

Rock Castle School
Webster, Massachusetts

Archaeological Description

No prehistoric sites are currently recorded on the property or in the general area (within one mile). The lack of sites likely results from underreporting--sites should exist on this area. Several prehistoric sites have been documented in this region, particularly along the shores of Lake Chaubunagungamaug to the east and Quinebaug River to the southwest. In addition, locational characteristics of the parcel, including its close proximity to the French River, indicate favorable conditions for native settlement and subsistence activities. In general, however, the small size of the parcel, as well as 1871 school construction with a full basement and 1948 addition, indicates a low potential for prehistoric sites. Pre-1871 historic resources are not known for the property. Archaeological resources may exist in association with late 19th-century school activities (sheet refuse, trash); however, the extent of school construction on the property likely limits the occurrence and importance of these resources as well.

8. Statement of Significance Rock Castle School, Webster, Massachusetts

Certifying official has considered the significance of this property in relation to other properties:

nationally statewide locally

Applicable National Register Criteria A B C D

Criteria Considerations (Exceptions) A B C D E F G

Areas of Significance (enter categories from instructions)

Architecture
Education
Community Planning and Development

Period of Significance

1871-1938

Significant Dates

1871

Cultural Affiliation

N/A

Significant Person

N/A

Architect/Builder

Earle & Fuller (architect)

Larned & Chaugh (builder)

State significance of property, and justify criteria, criteria considerations, and areas and periods of significance noted above.

The Rock Castle School possesses integrity of location, setting, design, materials, workmanship, and historical association with the civic development of Webster. Designed by the prominent architectural firm of Earle & Fuller, the school remains a well-preserved example of Italianate-style architecture. The Rock Castle School is of local significance and meets Criteria A and C for listing in the National Register of Historic Places.

Webster's public education system first offered high school classes in the 1850s. Classes were conducted on the second floor of the Town Hall near the present-day corner of Slater and East Main Streets in East Webster. In these early years the school was able to accommodate approximately 80 pupils. High school classes continued to be offered at these quarters until 1870 when the building was destroyed by fire. Following the fire, students attended classes in temporary classrooms set up in Webster Hall on School Street. After only a few months, a school building committee was organized to arrange for the erection of a permanent high school structure. Land was purchased in the "North Village" section of town from S. Slate & Sons, dominant manufacturer in the area and owner of much of the land in the North Village, and construction of the school began in 1870. The town appropriated \$20,000 for construction of the building and secured Worcester architects Earle & Fuller for its design. Builders Larned & Chaugh of Worcester were hired to undertake construction. By the end of 1870, most of the work had been completed with over \$14,000 having been spent by the town. The Rock Castle School, known as the Webster High School when built, was completed in 1871, for a total cost of \$19,549. It was not until after 1888 that the name "Rock Castle" was used. It is said that one of the students suggested the name "Rock Chronicle" for the first school newspaper and from then on townspeople and students called the school "Rock Castle."

Stephen Earle (1839-1913) and James Fuller (1836-1901), principals of the firm Earle & Fuller (functioning 1867-1876), were prominent architects not only in Worcester but throughout central Massachusetts during the second half of the

See continuation sheet

9. Major Bibliographical References Rock Castle School, Webster, Massachusetts

Webster Times. Centennial Issue, 1859-1959
Bartlett High School yearbook: "The Chronicle", 1972
Webster Town Report, 1870-1871
Webster Times. April 9, 1870
Charles Leaven Notes, Volume 2
Webster Town Directories, various years
Maps and Atlas research

Previous documentation on file (NPS):

- preliminary determination of individual listing (36 CFR 67) has been requested HPCA #11019MA
- previously listed in the National Register
- previously determined eligible by the National Register
- designated a National Historic Landmark
- recorded by Historic American Buildings Survey # _____
- recorded by Historic American Engineering Record # _____

See continuation sheet

Primary location of additional data:

- State historic preservation office
- Other State agency
- Federal agency
- Local government
- University
- Other

Specify repository:
Massachusetts Historical Commission

10. Geographical Data

Acres of property Less than one acre

UTM References

A

1	9	2	6	1	8	2	0	4	6	5	9	5	2	0
Zone				Easting				Northing						

B

Zone				Easting				Northing						

C

Zone				Easting				Northing						

D

Zone				Easting				Northing						

See continuation sheet

Verbal Boundary Description

See attached map for accurate representation of property boundaries.

See continuation sheet

Boundary Justification

The boundaries include the land occupied by the building as delineated on the assessor's map.

See continuation sheet

11. Form Prepared By

name/title Christine Beard-Historic Pres. Consultant w/Betsy Friedburg, N.R. Director, MHC
organization Massachusetts Historical Commission date November, 1988
street & number 80 Boylston Street telephone (617) 727-8470
city or town Boston state Massachusetts zip code 02116

**United States Department of the Interior
National Park Service****National Register of Historic Places
Continuation Sheet**Section number 8 Page 1Rock Castle School
Webster, Massachusetts

19th century. They are best known for their educational and civic buildings in central Massachusetts. Among the firm's best-known works are Boynton Hall at Worcester Polytechnic Institute (1867-1868). Other major buildings designed by Stephen Earle include numerous town halls (Canton, Oxford, and Ayer, Massachusetts), churches (Pilgrim Congregational and Union Congregational Churches in Worcester), the original buildings for Clark University in Worcester, and the School Street Engine House in Webster. Although granite ashlar was uncommon for school buildings in the smaller towns, it was a material commonly used by Earle & Fuller. The Rock Castle School is typical among the Earle & Fuller buildings for its use of granite blocks and its elegant Italianate-style design.

A fine example of the Italianate style, the Rock Castle School retains major elements of its original design, including a characteristic rectangular plan with a hipped roof, symmetrical elevations with pedimented central pavilions, exceptionally fine stonework, arched windows, panelled doors, and ornamental entry hoods.

At the time the school opened, two teachers were employed, C. T. Haynes and E. M. Everett. Documentation has not been found to indicate exactly what curriculum was followed at the school but it was built prior to the educational reforms of the 1890s and early 1900s that expanded the curriculum of most secondary schools to include vocational training, such as typing, cooking and trade education. The original floor plan of the Rock Castle School, which consisted of two large classrooms on the first and school floors, is indicative of traditional teaching practices, which relied on one teacher conducting a large group of students in the strictly intellectual subjects of reading, writing, and arithmetic; fewer specialized classrooms were needed to accommodate this type of curriculum. It is likely that the more traditional curriculum was used at the Rock Castle School well into the the 1890s, as the town continued to employ only two teachers during that time. The school continued to function as a high school until 1905 when the larger, more modern Bartlett High School (still in use) was opened. The Rock Castle School continued to be used for educational purposes after the high school classes were removed. In the early twentieth century, it served as a grammar school, remaining as such until the 1930s. The building was again reopened in 1948, this time as the vocational annex to the Bartlett High School. It continued to function as a trade school until 1972 when the creation of the Bay Path Regional Vocational High School in Charlton, Massachusetts, forced the closing of Rock Castle once again. Until the recent rehabilitation, the building was used as a storage facility by the school department.



Webster Assessors Map: #14
 Scale: 1" = 100'

United States Department of the Interior
National Park Service

National Register of Historic Places
Continuation Sheet

Section number _____ Page _____

SUPPLEMENTARY LISTING RECORD

NRIS Reference Number: 89000437

Date Listed: 06/07/89

Rock Castle School
Property Name

Worcester
County

MA
State

N/A
Multiple Name

This property is listed in the National Register of Historic Places in accordance with the attached nomination documentation subject to the following exceptions, exclusions, or amendments, notwithstanding the National Park Service certification included in the nomination documentation.

for Betty R. Sarge

Signature of the Keeper

6-7-89
Date of Action

Amended Items in Nomination:

Applicable Criteria:

Criterion B was inadvertently checked at the top of section #8, criterion C was intended as indicated by the text.

This information was confirmed with Ann Tait, Acting National Register Director, MASHPO, by telephone.

DISTRIBUTION:

- National Register property file
- Nominating Authority (without nomination attachment)

UNITED STATES DEPARTMENT OF THE INTERIOR
NATIONAL PARK SERVICE

NATIONAL REGISTER OF HISTORIC PLACES
EVALUATION/RETURN SHEET

REQUESTED ACTION: NOMINATION

PROPERTY NAME: Rock Castle School

MULTIPLE NAME:

STATE & COUNTY: MASSACHUSETTS, Worcester

DATE RECEIVED: 4/24/89 DATE OF PENDING LIST: 5/09/89
DATE OF 16TH DAY: 5/25/89 DATE OF 45TH DAY: 6/08/89
DATE OF WEEKLY LIST:

REFERENCE NUMBER: 89000437

NOMINATOR: STATE

REASONS FOR REVIEW:

APPEAL: N DATA PROBLEM: N LANDSCAPE: N LESS THAN 50 YEARS: N
OTHER: N PDIL: Y PERIOD: N PROGRAM UNAPPROVED: N
REQUEST: N SAMPLE: N SLR DRAFT: Y NATIONAL: N

COMMENT WAIVER: N

ACCEPT RETURN REJECT 6/7/89 DATE

ABSTRACT/SUMMARY COMMENTS:

*Well preserved Italianate Style
School historically associated
with Webster's civic development.*

RECOM./CRITERIA Accept A4C
REVIEWER Savage
DISCIPLINE Architectural History
DATE 6/7/89

*Part I certified: 1-11-85
Part II certified: 4-21-86*

DOCUMENTATION see attached comments Y/N see attached SLR (Y)N

CLASSIFICATION

___ count ___ resource type

STATE/FEDERAL AGENCY CERTIFICATION

FUNCTION

___ historic ___ current

DESCRIPTION

___ architectural classification
___ materials
___ descriptive text

SIGNIFICANCE

Period Areas of Significance--Check and justify below

Specific dates Builder/Architect
Statement of Significance (in one paragraph)

___ summary paragraph
___ completeness
___ clarity
___ applicable criteria
___ justification of areas checked
___ relating significance to the resource
___ context
___ relationship of integrity to significance
___ justification of exception
___ other

BIBLIOGRAPHY

GEOGRAPHICAL DATA

___ acreage ___ verbal boundary description
___ UTM's ___ boundary justification

ACCOMPANYING DOCUMENTATION/PRESENTATION

___ sketch maps ___ USGS maps ___ photographs ___ presentation

OTHER COMMENTS

Questions concerning this nomination may be directed to

_____ Phone _____

Signed _____ Date _____



Rock Castle School
Prospect Street
Webster, MA

Photographer: Christine S. Beard
25 Cottage Street
Natick, MA 01760
September, 1987

View: Looking west at facade (east elevation)

Photo: 1 of 2

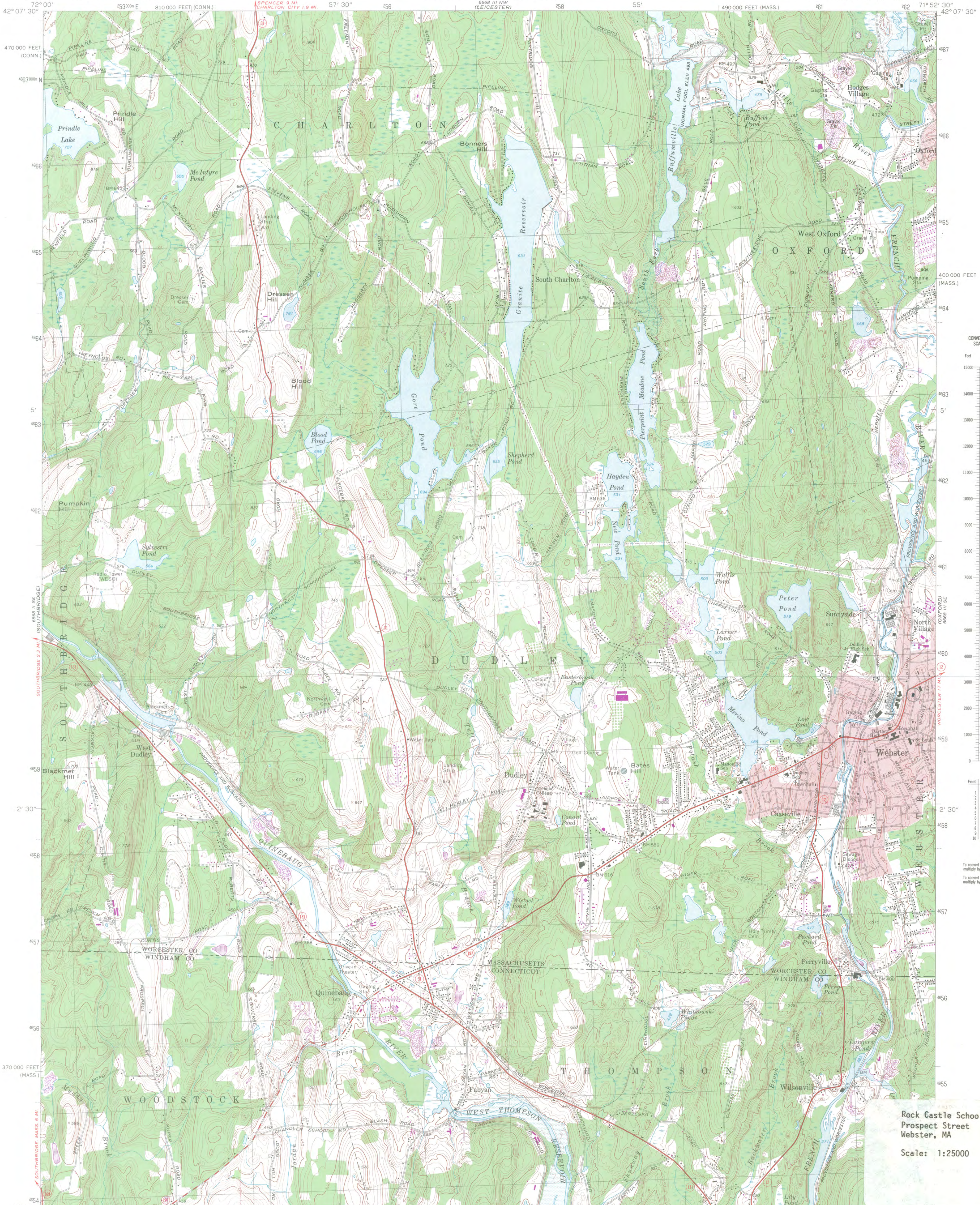


Rock Castle School
Prospect Street
Webster, MA

Photographer: Christine S. Beard
25 Cottage Street
Natick, MA 01760
September, 1987

View: Looking southeast at rear (west) elevation

Photo: 2 of 2



UTM REFERENCE
zone Easting Northing
A. 19 261820 4659320

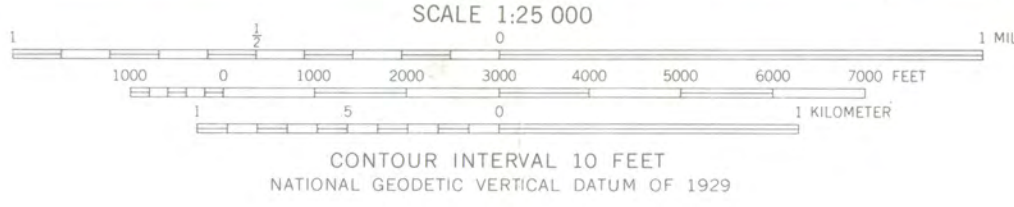
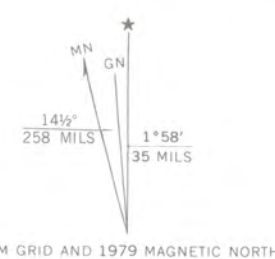
Feet	Meters
1	0.3048
2	0.6096
3	0.9144
4	1.2192
5	1.5240
6	1.8288
7	2.1336
8	2.4384
9	2.7432
10	3.0480

To convert feet to meters multiply by 0.3048
To convert meters to feet multiply by 3.2808

Rock Castle School
Prospect Street
Webster, MA
Scale: 1:25000



Mapped, edited, and published by the Geological Survey
Control by USGS, USC&GS, and Massachusetts Geodetic Survey
Topography by planetable surveys 1942-1943. Revised from aerial
photographs taken 1966. Field checked 1969
Polyconic projection. 1927 North American datum
10,000-foot grids based based on Massachusetts coordinate system,
mainland zone, and Connecticut coordinate system
1000-meter Universal Transverse Mercator grid,
zone 19
Fine red dashed lines indicate selected fence and field lines where
generally visible on aerial photographs. This information is uncheck
Red tint indicates areas in which only landmark buildings are shown
Areas covered by dashed light-blue pattern
are subject to controlled inundation



CONTOUR INTERVAL 10 FEET
NATIONAL GEODETIC VERTICAL DATUM OF 1929

ROAD CLASSIFICATION

- Primary highway, all weather, hard surface
- Secondary highway, all weather, hard surface
- Light-duty road, all weather, improved surface
- Unimproved road, fair or dry weather
- State Route



QUADRANGLE LOCATION

THIS MAP COMPLIES WITH NATIONAL MAP ACCURACY STANDARDS
FOR SALE BY U.S. GEOLOGICAL SURVEY, RESTON, VIRGINIA 22092
A FOLDER DESCRIBING TOPOGRAPHIC MAPS AND SYMBOLS IS AVAILABLE ON REQUEST

Revisions shown in purple compiled in cooperation with the State of
Massachusetts agencies from aerial photographs taken 1975 and other
source data. This information not field checked. Map edited 1979

WEBSTER, MASS.—CONN.
N4200—W7152.5/7.5
1969
PHOTOREVISED 1979
AMS 6668 III SW—SERIES V814



April 18, 1989

Carol Shull
National Register of Historic Places
Department of the Interior
National Park Service
P.O. Box 37127
Washington, DC 20013-7127

APR 24 1989

NATIONAL
REGISTER

Dear Ms. Shull:

Enclosed you will find the following nomination form:

Leominster, Cluett Peabody & Company, 123 First Street
Leominster, Whitney & Company, 142 Water Street
Norfolk, Norfolk Grange Hall, 28 Rockwood Road
Webster, Rock Castle School, Prospect Street, HPCA #11019MA
Webster, Thompson School, Prospect Street, HPCA #11018MA

All have been voted eligible by the State Review Board and have been signed by the State Historic Preservation Officer. Owners were notified of pending State Review Board consideration 30-75 days before the meeting and were afforded the opportunity to comment. Comments received to date are attached to the nomination form.

Sincerely,

Betsy Friedberg
Betsy Friedberg
National Register Director
Massachusetts Historical Commission

Enclosure:

BF/