

DEC 27 1990

United States Department of the Interior
National Park Service

National Register of Historic Places
Registration Form

This form is for use in nominating or requesting determinations of eligibility for individual properties or districts. See instructions in *Guidelines for Completing National Register Forms* (National Register Bulletin 16). Complete each item by marking "x" in the appropriate box or by entering the requested information. If an item does not apply to the property being documented, enter "N/A" for "not applicable." For functions, styles, materials, and areas of significance, enter only the categories and subcategories listed in the instructions. For additional space use continuation sheets (Form 10-900a). Type all entries.

1. Name of Property

historic name Shelbyville Hydroelectric Station

other names/site number N/A

2. Location

street & number State Highway 231 and Duck River

N/A not for publication

city, town Shelbyville

N/A vicinity

state Tennessee

code TN

county Bedford

code 003

zip code 37160

3. Classification

Ownership of Property

- private
- public-local
- public-State
- public-Federal

Category of Property

- building(s)
- district
- site
- structure
- object

Number of Resources within Property

Contributing	Noncontributing
<u>1</u>	<u> </u> buildings
<u> </u>	<u> </u> sites
<u>1</u>	<u> </u> structures
<u> </u>	<u> </u> objects
<u>2</u>	<u>0</u> Total

Name of related multiple property listing:

Pre-TVA Hydroelectric Development in TN, 1901-1933

Number of contributing resources previously listed in the National Register 0

4. State/Federal Agency Certification

As the designated authority under the National Historic Preservation Act of 1966, as amended, I hereby certify that this nomination request for determination of eligibility meets the documentation standards for registering properties in the National Register of Historic Places and meets the procedural and professional requirements set forth in 36 CFR Part 60. In my opinion, the property meets does not meet the National Register criteria. See continuation sheet.

Herbert E. Gayer
Signature of certifying official Deputy State Historical Preservation Officer
Tennessee Historical Commission
State or Federal agency and bureau

12/18/89
Date

In my opinion, the property meets does not meet the National Register criteria. See continuation sheet.

Signature of commenting or other official

Date

State or Federal agency and bureau

5. National Park Service Certification

I, hereby, certify that this property is:

- entered in the National Register.
- See continuation sheet.
- determined eligible for the National Register. See continuation sheet.
- determined not eligible for the National Register.
- removed from the National Register.
- other, (explain:)

Gregg Edlerman
William Gayer
Entered in the National Register
Substantive Review
2/9/90

Signature of the Keeper

Date of Action

6. Function or Use

Historic Functions (enter categories from instructions)INDUSTRY: energy facility

Current Functions (enter categories from instructions)NOT IN USE

7. Description

**Architectural Classification
(enter categories from instructions)**N/A

Materials (enter categories from instructions)foundation CONCRETEwalls CONCRETE

roof CONCRETEother N/A

Describe present and historic physical appearance.

The Shelbyville Hydroelectric Station is located near the junction of the Duck River and State Highway 231 in Shelbyville (population 13,700), seat of Bedford County, Tennessee. The inactive, minimally maintained site features a municipal park on the Highway 231 side of the dam, with recreational facilities and opportunities for fishing at the base of the dam.

The Shelbyville Hydroelectric Station was designed for the Southern Cities Power Corporation the Nashville engineering firm of Freeland, Roberts and Co., and built by the well-known Nashville construction firm, Foster & Creighton, for the Southern Cities Corporation, a privately owned public utility company based in Chattanooga. The powerhouse was built upon the foundation of the older generating station on the same spot. Located about seventy-five feet from the Shelbyville bank (east) of the Duck River, this concrete structure was built in 1924. The foundations of the power house are built of steel reinforced concrete. "The superstructure is a skeleton of reinforced concrete with 13 inch brick panels and a 2 inch brick parapet, including brick chimney." Unlike its sister in Columbia, the Shelbyville dam does not feature a "V" shaped trash boom, but does show a surge tank of appropriately sized dimensions. The power house is approximately thirty feet by forty-five feet and the roof is composed of a four inch reinforced concrete slab and beam construction.

The concrete gravity dam is 430 feet long and is divided into three parts; the main dam, an east section, and a west section. The main dam is 210 feet long, of which 185 feet are the spillway section. The west section of the dam was constructed at a twenty-three degree angle up stream and is similar to the main section in construction. The west section of the dam also contains two eight foot wide sluice gates for emergency reservoir drainage, and a fish ladder. The east section is fifty-seven feet long, fourteen feet high, and twelve feet thick at the base. It was built at a thirty degree angle upstream to the powerhouse. A walkway on the east section leads to the power house. The 1915 station utilized a 250 kilowatt generator which was driven by two vertical turbines. The extant 1924 vintage powerhouse¹ was equipped was a 216 kW unit, and another 216 kW unit was added in 1927. It was in operation for twenty-four years until 1948.

United States Department of the Interior
National Park ServiceNational Register of Historic Places
Continuation SheetSection number 7 Page 2 Shelbyville Hydroelectric Station

The site's appearance has changed little since its construction in 1924. On the Shelbyville side of the dam the powerhouse is reached by a precarious climb down the bank of the Duck River (east side), then over the overgrown foundation of the earlier (1915) and smaller hydroelectric station foundation to the overflow section of the dam which supports an angled concrete walkway that leads to the powerhouse proper, which sits on the (east) bank of the Duck River. Its nine windows, while missing much of the original steel framing fabric, were most likely identical to those featured at the Columbia Hydroelectric Station. The windows were probably rectangularly shaped with six over six pane configuration. The dam and fishladder are still extant, as are the water intakes, which are approximately half a mile upstream. All generating and transmission equipment and machinery was long ago removed and sold for scrap. However, as an indication of confidence in the sites physical integrity is the commercial interest recently expressed in the feasibility of refurbishing the Shelbyville hydroelectric site for the purposes of generating electricity.

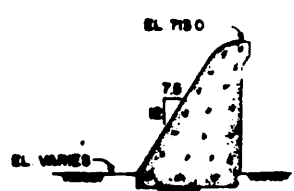
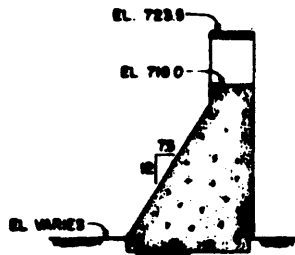
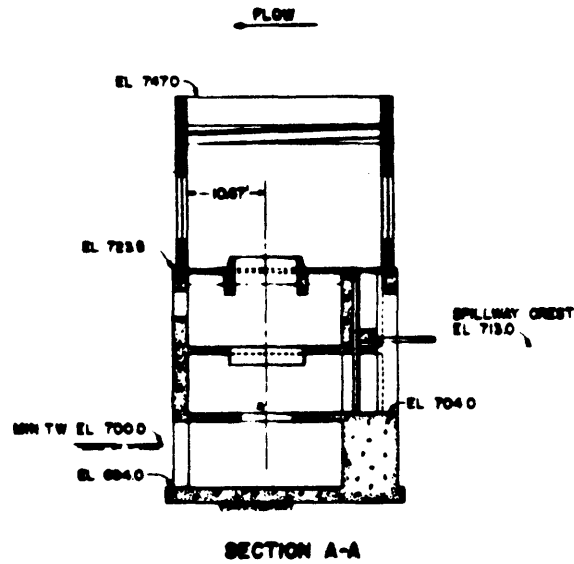
¹ "Feasibility Report - Shelbyville Dam," pp. 1-7; and "Preliminary Survey, Shelbyville Dam,"; and SCN January 1, 1973, No. 57, p. 5.

United States Department of the Interior
National Park Service

National Register of Historic Places
Continuation Sheet

Section number 7 Page 3

Shelbyville Hydroelectric Station

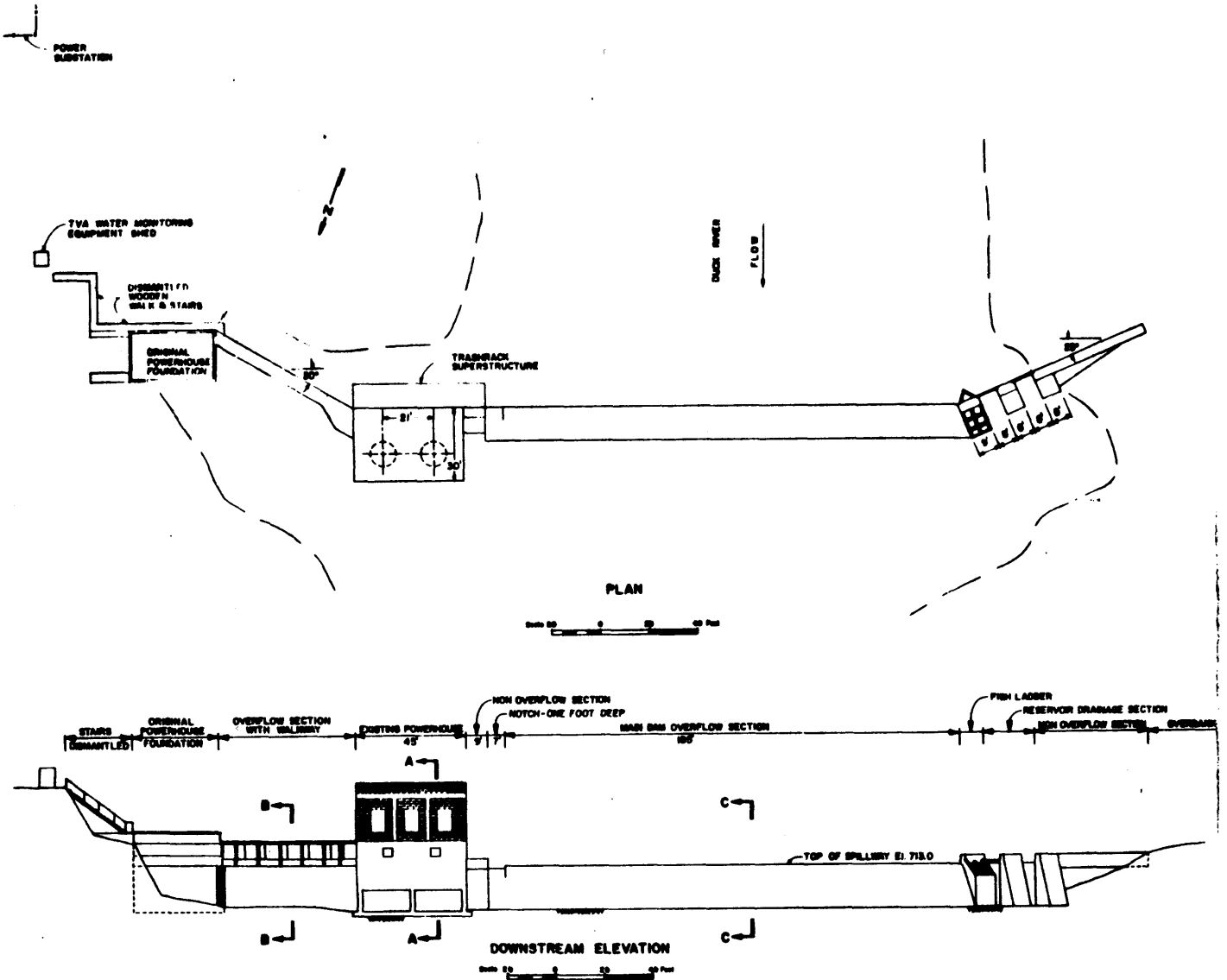


United States Department of the Interior
National Park Service

National Register of Historic Places
Continuation Sheet

Section number 7 Page 4

Shelbyville Hydroelectric Station



8. Statement of Significance

Certifying official has considered the significance of this property in relation to other properties:

nationally statewide locally

Applicable National Register Criteria A B C D

Criteria Considerations (Exceptions) A B C D E F G N/A

Areas of Significance (enter categories from instructions)

COMMERCE

COMMUNITY PLANNING & DEVELOPMENT

Period of Significance

1924 - 1933

Significant Dates

1924

Cultural Affiliation

N/A

Significant Person

N/A

Architect/Builder

Freeland Roberts & Co., Engineers

Foster & Creighton, Contractors

State significance of property, and justify criteria, criteria considerations, and areas and periods of significance noted above.

The Shelbyville Hydroelectric Station is significant under criterion A for its significance to the State of Tennessee as a representative example of the kind of smaller-scale, private-sector venture of a capitalist hydroelectric engineering projects typical at the time of its construction on the smaller rivers in Tennessee. The Shelbyville Hydroelectric Station is significant under Commerce because of the change it represents in the business of trading goods, services, and commodities, and the gradual introduction of electrical power into everyday life. Moreover it is representative of a broader commercial and business trend witnessed in the shift from locally owned and controlled (1915) electrical production to that of regional (Southern Cities, 1924) and later statewide (TEPCO, 1929) significance in terms of its ownership history and its integration into a larger electrical production and delivery network. Additionally, the site is also significant for Community Planning and Development because it provided stimulation to extend city limits, plan for future electric needs, erect electric street lights, traffic lights, and power industry.

The design of the Shelbyville Hydroelectric Station is similar with two other extant sites on the Duck River, all designed and built in the 1920s by the same two Nashville industrial engineering and construction firms, for the same public utilities firm. The site operated for twenty-four years from 1924 to 1948 and was the sole source of electricity for Shelbyville. Only minor changes in generating machinery were made. The site has attracted the interest of current entrepreneurs interested in the feasibility of refurbishing the site for contemporary electrical power production. It stands as a symbol of the growing twentieth-century demand, production, and consumption of, electrical power. The Shelbyville Hydroelectric Station meets the registration requirements for Pre-TVA Hydroelectric Power Generating Facilities as set forth in the Multiple Property Documentation Form for Pre-TVA Hydroelectric Development in Tennessee, 1901-1933.

See continuation sheet

9. Major Bibliographical References

Crouch, A. W. , and C. R. Matlock. "Small Hydro Plants Passing Into History." Electro Topics, vol. XVII, no. 1 (Jan. - Feb. 1934).

Preliminary Survey Generation Stations. Southern Cities Power Company. ca. 1929. Jo Conn Build Collection. TVA, Natural Resources Division.

Systems Control News. January 1, 1973 - No. 57 and March 1, 1973 - No. 59.

Tennessee Valley Authority, Office of Natural Resources, Division of Water Resources. Small Hydro Program Feasibility Reports. Technical Report Series, WSDB Report No. WR28 - 510 - 133, February 1982.

Previous documentation on file (NPS): N/A

- preliminary determination of individual listing (36 CFR 67) has been requested
- previously listed in the National Register
- previously determined eligible by the National Register
- designated a National Historic Landmark
- recorded by Historic American Buildings Survey # _____
- recorded by Historic American Engineering Record # _____

See continuation sheet

Primary location of additional data:

- State historic preservation office
- Other State agency
- Federal agency
- Local government
- University
- Other

Specify repository: _____

10. Geographical Data

Acreeage of property less than one acre

UTM References

A

1	6
---	---

5	4	8	3	6	0
---	---	---	---	---	---

3	9	2	6	8	2	0
---	---	---	---	---	---	---

Zone Easting Northing

B

--	--

--	--	--	--	--	--

--	--	--	--	--	--

Zone Easting Northing

C

--	--

--	--	--	--	--	--

--	--	--	--	--	--

D

--	--

--	--	--	--	--	--

--	--	--	--	--	--

See continuation sheet

Shelbyville, TN 79NW

Verbal Boundary Description

The boundaries for the Shelbyville Hydroelectric Station include the footprints of the dam and powerhouse. See accompanying map.

See continuation sheet

Boundary Justification

The boundaries are sufficient to protect the historic integrity of the site.

See continuation sheet

11. Form Prepared By

name/title <u>James B. Jones, Jr., Historic Preservation Specialist</u>	date <u>September 1989</u>
organization <u>Tennessee Historical Commission</u>	telephone <u>(615) 742-6718</u>
street & number <u>701 Broadway</u>	state <u>Tennessee</u> zip code <u>37243-0442</u>
city or town <u>Nashville</u>	

United States Department of the Interior
National Park Service

**National Register of Historic Places
Continuation Sheet**

Section number Photos Page 1 Shelbyville Hydroelectric Station

Shelbyville Hydroelectric Station
State Highway 231 and the Duck River
Shelbyville, Bedford County, Tennessee
Photo By: James B. Jones, Jr.
Date: March 1989
Neg: Tennessee Historical Commission
Nashville, Tennessee

Eastern section of dam, looking west, showing remains of 1915 powerhouse site foundation and dam spillway with walkway leading to 1924 powerhouse.
#1 of 10

Foundation of 1915 powerhouse with 1924 powerhouse and Duck River in distance. Looking west.
#2 of 10

Concrete walkway leading to powerhouse over spillway portion of eastern section of dam. Looking west.
#3 of 10

Powerhouse showing concrete foundation and brick superstructure. Looking west.
#4 of 10

Showing relationship between concrete foundation of 1915 powerhouse (foreground) overflow section of dam, walkway, and powerhouse. Looking west.
#5 of 10

Walkway, dam, and powerhouse, looking downstream, or north.
#6 of 10

Upstream side of powerhouse, showing windows, surge suppression pipe, and forebays. Looking north.
#7 of 10

Powerhouse, spillway section of dam, fishladder, and two sluice gates. Looking east.
#8 of 10

United States Department of the Interior
National Park Service

**National Register of Historic Places
Continuation Sheet**

Section number Photos Page 2 Shelbyville Hydroelectric Station

Close up of western foot of dam, two sluice gates, and fish ladder. (Note figure on dam footing.) Looking south.

#9 of 10

Showing relationship of dam and powerhouse; note city of Shelbyville in background. Looking east.

#10 of 10

United States Department of the Interior
National Park Service

National Register of Historic Places
Continuation Sheet

Section number 10 Page 2

Shelbyville Hydroelectric Station

