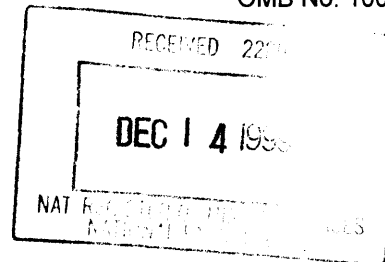


United States Department of the Interior
National Park Service

National Register of Historic Places
Registration Form



This form is for use in nominating or requesting determination for individual properties and districts. See instruction in *How to Complete the National Register of Historic Places Registration Form* (National Register Bulletin 16A). Complete each item by marking "x" in the appropriate box or by entering the information requested. If an item does not apply to the property being documented, enter "N/A" for "not applicable." For functions, architectural classification, materials and areas of significance, enter only categories and subcategories from the instructions. Place additional entries and narrative items on continuation sheets (NPS Form 10-900a). Use a typewriter, word processor, or computer, to complete all items.

1. Name of Property

historic name Union High School
other names/site number Westminster Junior High School; Alternative Center for Education; 5AM895

2. Location

street & number 3455 W. 72nd Avenue [N/A] not for publication
city or town Westminster [N/A] vicinity
state Colorado code CO county Adams code 001 zip code 80030

3. State/Federal Agency Certification

As the designated authority under the National Historic Preservation Act, as amended, I hereby certify that this [X] nomination [] request for determination of eligibility meets the documentation standards for registering properties in the National Register of Historic Places and meets the procedural and professional requirements set forth in 36 CFR Part 60. In my opinion, the property [X] meets [] does not meet the National Register criteria. I recommend that this property be considered significant [] nationally [] statewide [X] locally. ([] See continuation sheet for additional comments.)

Georgina Cortez State Historic Preservation Officer 11/24/99 Date
Signature of certifying official/Title
State Historic Preservation Office, Colorado Historical Society
State or Federal agency and bureau

In my opinion, the property [] meets [] does not meet the National Register criteria.
([] See continuation sheet for additional comments.)

Signature of certifying official/Title _____ Date _____
State or Federal agency and bureau _____

4. National Park Service Certification

I hereby certify that the property is:

- entered in the National Register
[] See continuation sheet.
- determined eligible for the National Register
[] See continuation sheet.
- determined not eligible for the National Register.
- removed from the National Register
- other, explain
[] See continuation sheet.

Edson H. Beall Signature of the Keeper 1-14-00 Date of Action

Union High School
Name of Property

Adams County, Colorado
County/State

5. Classification

Ownership of Property

(Check as many boxes as apply)

- private
- public-local
- public-State
- public-Federal

Category of Property

(Check only one box)

- building(s)
- district
- site
- structure
- object

Number of Resources within Property

(Do not count previously listed resources.)

Contributing	Noncontributing	
--------------	-----------------	--

1	1	buildings
0	0	sites
0	0	structures
0	0	objects
1	1	Total

Name of related multiple property listing.

(Enter "N/A" if property is not part of a multiple property listing.)

N/A

Number of contributing resources previously listed in the National Register.

0

6. Function or Use

Historic Function

(Enter categories from instructions)

School

Current Functions

(Enter categories from instructions)

School

7. Description

Architectural Classification

(Enter categories from instructions)

Late 19th and 20th Century Revivals
Modern Movement: Art Deco

Materials

(Enter categories from instructions)

foundation Concrete
walls Brick
Steel
Concrete
Roof Synthetic
Steel
other

Narrative Description

(Describe the historic and current condition of the property on one or more continuation sheets.)

Union High School
Name of Property

Adams County, Colorado
County/State

8. Statement of Significance

Applicable National Register Criteria

(Mark "X" in one or more boxes for the criteria qualifying the property for National Register listing.)

- A** Property is associated with events that have made a significant contribution to the broad patterns of our history.
- B** Property is associated with the lives of persons significant in our past.
- C** Property embodies the distinctive characteristics of a type, period, or method of construction or represents the work of a master, or possesses high artistic values, or represents a significant and distinguishable entity whose components lack individual distinction.
- D** Property has yielded, or is likely to yield, information important in prehistory or history.

Criteria Considerations

(Mark "X" in all the boxes that apply.)

Property is:

- A** owned by a religious institution or used for religious purposes.
- B** removed from its original location.
- C** a birthplace or grave.
- D** a cemetery.
- E** a reconstructed building, object, or structure.
- F** a commemorative property.
- G** less than 50 years of age or achieved significance within the past 50 years.

Narrative Statement of Significance

(Explain the significance of the property on one or more continuation sheets.)

9. Major Bibliographical References

Bibliography

(Cite the books, articles and other sources used in preparing this form on one or more continuation sheets.)

Previous documentation on file (NPS):

- preliminary determination of individual listing (36 CFR 67) has been requested
- previously listed in the National Register
- previously determined eligible by the National Register
- designated a National Historic Landmark
- recorded by Historic American Buildings Survey
- # _____
- recorded by Historic American Engineering Record
- # _____

Areas of Significance

(Enter categories from instructions)

Community Planning and Development
Education
Politics/Government

Periods of Significance

1929 – 1949

Significant Dates

1939

1949

Significant Person(s)

(Complete if Criterion B is marked above.)

N/A

Cultural Affiliation

N/A

Architect/Builder

Public Works Administration

Parry, R.O.

Newstrom, Paul M.

Primary location of additional data:

- State Historic Preservation Office
- Other State Agency
- Federal Agency
- Local Government
- University
- Other

Name of repository:

Colorado Historical Society

Union High School
Name of Property

Adams County, Colorado
County/State

10. Geographical Data

Acreage of Property 1.4

UTM References

(Place additional UTM references on a continuation sheet.)

1. 13 497240 4408420
Zone Easting Northing

3. Zone Easting Northing

2. Zone Easting Northing

4. Zone Easting Northing

[] See continuation sheet

Verbal Boundary Description

(Describe the boundaries of the property on a continuation sheet.)

Boundary Justification

(Explain why the boundaries were selected on a continuation sheet.)

11. Form Prepared By

name/title Helen Van Cleave / Trustee; Linda Cherrington / President

organization Westminster Historical Society date May 15, 1999

street & number PO Box 492 telephone 303-428-2360

city or town Westminster state CO zip code 80030

Additional Documentation

Submit the following items with the completed form:

Continuation Sheets

Maps

A **USGS map** (7.5 or 15 minute series) indicating the property's location.

A **Sketch map** for historic districts and properties having large acreage or numerous resources.

Photographs

Representative **black and white photographs** of the property.

Additional Items

(Check with the SHPO or FPO for any additional items)

Property Owner

(Complete this item at the request of SHPO or FPO.)

name Adams County School District No. 50

street & number 4476 West 68th Avenue telephone 303-428-3511

city or town Westminster state CO zip code 80030

Paperwork Reduction Act Statement: This information is being collected for applications to the National Register of Historic Places to nominate properties for listing or determine eligibility for listing, to list properties, and to amend existing listings. Response to this request is required to obtain a benefit in accordance with the National Historic Preservation Act, as amended (16 U.S.C. 470 *et seq.*)

Estimated Burden Statement: Public reporting burden for this form is estimated to average 18.1 hours per response including time for reviewing instructions, gathering and maintaining data, and completing and reviewing the form. Direct comments regarding this burden estimate or any aspect of this form to the Chief, Administrative Services Division, National Park Service, P.O. Box 37127, Washington, DC 20013-7127, and the Office of Management and Budget, Paperwork Reductions Projects (1024-0018), Washington, DC 20503.

**United States Department of the Interior
National Park Service**

**National Register of Historic Places
Continuation Sheet**

Union High School
Adams County, Colorado

Section number 7 Page 1

DESCRIPTION

The 1929 Union High School, with its 1939 addition and noncontributing shop building, occupies a large parcel of land on the north side of 72nd Avenue east of Lowell Boulevard in Westminster, Colorado. The building fronts south onto 72nd Avenue. Landscaping consists of a small strip of sod and deciduous trees along the 72nd Avenue elevation set off by six planters with short concrete walls. A tall metal flagpole stands beside the sidewalk. The remaining elevations are surrounded by paved asphalt parking lots. The building is part of a larger educational complex currently known as the Alternative Center for Education. Other buildings in the complex include the Westminster Elementary School (National Register listed) and the 1949 Westminster High School building. Only the Union High School building, noncontributing shop and the historically associated landscape is being nominated.

The two-story building is basically an irregular el-plan, approximately 210 ft. by 115 ft., with the original 1929 building on the east and the 1939 gymnasium and classroom addition on the west. The original building is a steel frame structure with a blonde brick veneer of wire cut brick with a distinctive embossed surface swirl made by wire placed on the face of the brick molds. Blonde brick predominates throughout the building with dark brown brick used for accent as coping, rowlock sills and belt courses. The dark brick forms a distinctive diamond pattern, or diapering, in the facade parapet formed through the use of dark headers in a field of tan brick. All the windows in both the original building and addition are recent (1998) replacements consisting of white vinyl-clad, generally of one-over-one, fixed-light design with tinted glazing.

The south (facade) elevation of the original building is symmetrical in plan with a central entry bay flanked by pilasters with multiple brick-width setbacks. The entry consists of a double door recessed at grade beneath a soldier course segmental arch topped with a slightly protruding rowlock arch. The area beneath the arch contains a series of header courses with a diamond-shaped terra cotta insert. The metal doors each contain narrow vertical lights. A concrete panel above the entry states in embossed letters, "Union High School, District No. 3, 1929." The second-story portion of the entry bay contains a double window with large upper lights, rowlock sill and triple rowlock segmental arch. A double rowlock belt course defines the parapet and runs around the three visible sides of the original building. The corbeled entry pilasters extend above the parapet to terminate in a symmetrical stepped pattern with brown brick coping. Each side of the entry is composed of two bays separated by a pilaster similar to those flanking the entrance. The inside bays contain a pair of windows on each story with continuous rowlock sills on the upper level. The outside bays each contain five windows per floor, again with continuous sills on the upper level.

The east elevation is divided into three large bays by simple brick pilasters with brown brick coping. The southern-most bay is without fenestration. A t-shaped plan elevator tower attaches to the central bay. Double steel doors on the south provide access to the first-floor hallway, through the original exterior door, and to the elevator, which is housed in the brick portion of the tower. The two-story tower is stepped back at the upper level and the blonde brick veneer with tan brick coping and upper level soldier course is compatible with the original building. The second-floor is accessed by a narrow corridor which is illuminated by a pair of one-over-one windows on both the south and north elevations. A similar pair of windows occupies the first-story connector on the north tower elevation. The east elevation of the tower is without fenestration.

The remainder of the lower level of the original central bay on the east elevation contains two windows which occupy the space to the south of the entrance and three windows fill the space to the north. The upper story contains three windows on the north centered over similar lower story windows. The northern-most bay consists of a pair of windows on both the first and second story. The dark belt course from the facade wraps around the east parapet but the diamond brick pattern is not utilized.

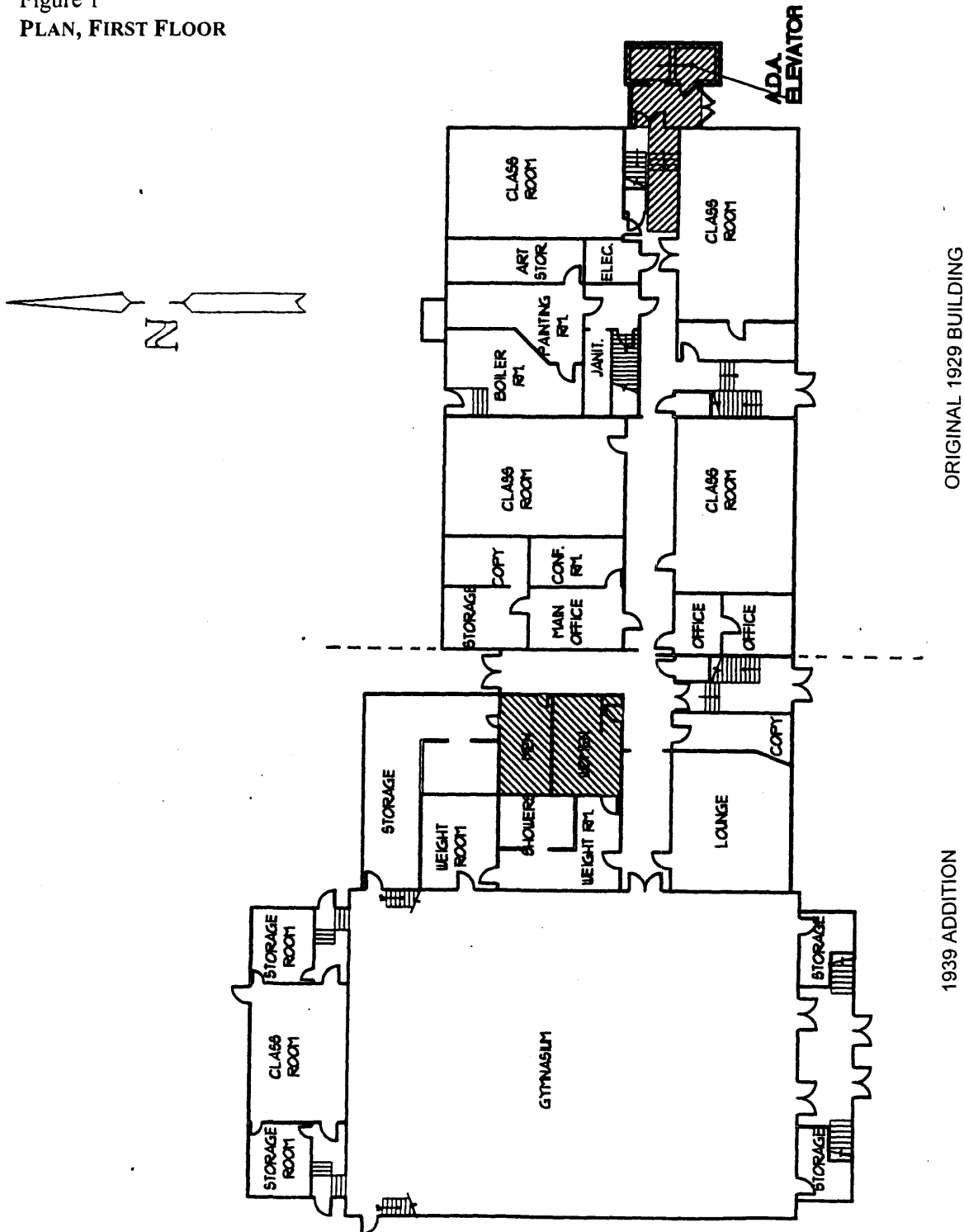
United States Department of the Interior
National Park Service

National Register of Historic Places
Continuation Sheet

Union High School
Adams County, Colorado

Section number 7 Page 2

Figure 1
PLAN, FIRST FLOOR



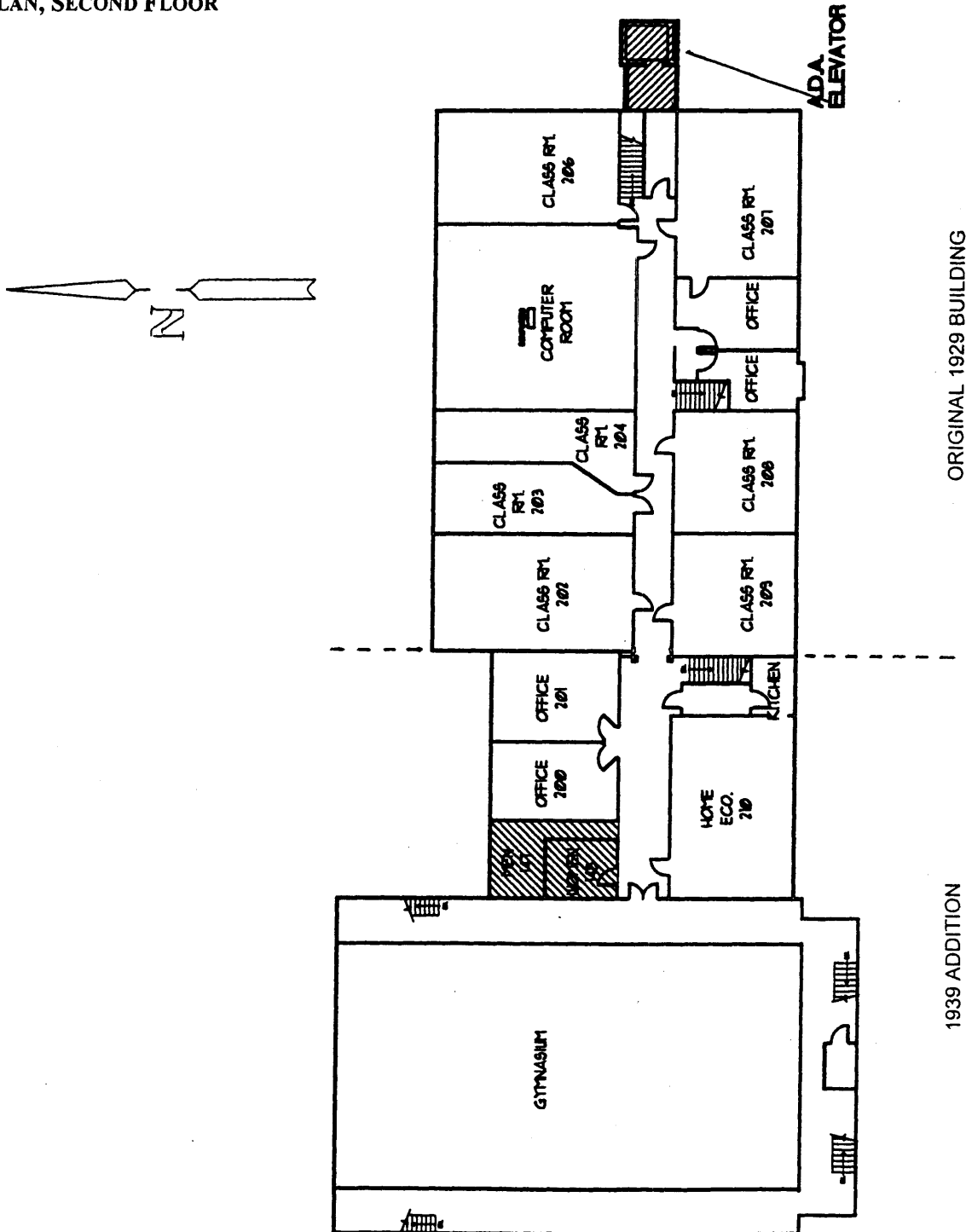
United States Department of the Interior
National Park Service

National Register of Historic Places
Continuation Sheet

Section number 7 Page 3

Union High School
Adams County, Colorado

Figure 2
PLAN, SECOND FLOOR



**United States Department of the Interior
National Park Service**

**National Register of Historic Places
Continuation Sheet**

Union High School
Adams County, Colorado

Section number 7 Page 4

The north (rear) elevation is divided into five bays by simple brick pilasters which terminate just below the roof with sloping brick capitals. The brick wall terminates at the roof line and a full length metal gutter drains the gently sloping roof into four metal downspouts. The eastern-most bay contains a single window on the lower level. The next bay and the three western-most bays each contain a pair of windows on both the upper and lower floors. The exception being the second bay in from the east in which the lower level is largely covered by a large natural gas meter inside a chain link cage. The third bay in from the east contains a square, brick chimney which rises well above the roof.

Only a very small portion of the west elevation of the original building remains visible outside the 1939 addition. This portion is without fenestration.

The 1939 addition utilizes a brick of similar color to that of the original building. The two-story addition connects to the original building along its west elevation. The south elevation of the 1939 addition consists of two major sections, the gymnasium and the classrooms. The gable-roofed gymnasium portion is symmetrical in design with a shorter extended portion which contains the entry, stairs to the balcony and storage rooms. The actual entry consists of two sets of double, half-light metal doors with corbeled tan brick reveal within a blonde brick surround flanked by a series of narrow, stepped pilasters. A tall narrow recess on each side of the door once held light fixtures. The remainder of the entry is divided into three sections by wide pilasters. The center section contains five evenly spaced upper level windows. The narrow end bays each contain a single window on the lower and upper levels. A rowlock tan brick belt course runs across each bay as an extension of the first-story sills. An additional tan brick belt course, in soldier bond, runs across each bay at the level of the first-story lintels. Additional ornamentation includes the rowlock and soldier bond tan brick parapet coping. The entry parapet also contains two vertically oriented corbeled tan brick ribs which extend above the parapet. The west and east elevations of the extension contain a single window on each story.

The main portion of the addition's south elevation sits flush with the original building. The classroom portion joins the original building and contains a recessed entry with double metal doors within a stepped brick surround. The first and second story each contain a four-window bay flanked by single windows. A single window occupies the area over the entry and three windows fill the gymnasium parapet. Tan brick coping lines the parapet.

The west elevation contains four pilasters with sloping capitals which divide the elevation into five bays. The end bays each contain double windows on each story. The middle bays each contain triple windows on each story. A stepped parapet with tan brick coping tops the elevation. The northern-most portion of the elevation consists of a shorter, set-back section with a flat roof which contains a metal door and two windows. A soldier bond belt course of tan brick runs across the elevation level with the tops of the lower level windows and a stretcher course of similar brick forms a belt course as an extension of the sills.

The north elevation of the gymnasium portion of the addition contains three windows and a solid metal door in the shorter section. The gable end of the gymnasium is without fenestration. The north elevation of the classroom portion of the addition contains a double metal entry door on the first story and three windows on the set-back second story. The east elevation of the addition contains a solid metal door in the north gymnasium extension.

The interior consists of a central hallway oriented east-west which accesses various classrooms, lavatories, storage rooms and offices. The hallway has a suspended ceiling and wood paneled walls. The lower level is situated slightly below grade. The hall opens on the west into the gymnasium. The gymnasium floors are of hardwood, the walls of hollow tile, and the metal roof trusses are exposed. A mezzanine seating area wraps around the east, south and west sides and is accessed from double stairs off the main entry lobby and from additional stairs at the far north end of each side. The original wood bleachers and floors remain.

**United States Department of the Interior
National Park Service**

**National Register of Historic Places
Continuation Sheet**

Section number 7 Page 5

Union High School
Adams County, Colorado

ALTERATIONS

The most significant alteration to the original building was the construction of the 1939 gymnasium addition. The addition has gained historical significance in its own right and was constructed during the property's period of significance.

Some interior changes occurred to the building as it was used consecutively as a high school, junior high, kindergarten, and as a center for continuing and alternative education. Some reconfiguration of classroom space occurred to accommodate these changing uses. The stage in the gymnasium was walled off at an unknown date and the space converted to storage. Drop ceilings have been added to hallways and classrooms throughout the building. Asbestos was removed during the summer of 1999.

The most notable recent exterior change was the 1998 replacement of all the original multi-light windows with vinyl-clad, single-hung, one-over-one windows with tinted glazing. In 1999 the east elevation elevator tower was added.

SHOP BUILDING

In the late 1960s a large metal building was constructed behind Union High School to house automotive repair classes as part of the Career Enrichment Park. The gently pitched gable-roofed building with cinder block rear extension is not physically attached to the Union High School building and is considered to be a noncontributing resource.

**United States Department of the Interior
National Park Service**

**National Register of Historic Places
Continuation Sheet**

Union High School
Adams County, Colorado

Section number 8 Page 6

SIGNIFICANCE

Union High School is eligible for the National Register under Criterion A in the areas of Education, Community Planning and Development, and Politics/Government. The building served as the first high school for the Westminster community and functioned in that capacity from 1929 until 1949. The establishment of the school was an issue of some contention as three existing school districts vied for the distinction of hosting the new high school. Eventually the three districts agreed to jointly fund the construction and operation of the high school and to create a new school district for its administration. The school district constructed the 1939 gymnasium and classroom addition by taking advantage of the Public Works Administration (PWA), a New Deal era program designed to lower unemployment and stimulate the economy through the construction of public works projects.

PLANNING FOR UNION HIGH SCHOOL

By the late 1920s, Westminster was a small agricultural-based community surrounded by small farms and orchards. Seventy-second Avenue existed as a gravel road, and while not the main street in Westminster, it was important as the only road that extended east to Federal Boulevard, an important north-south street in western Denver.

Three Adams County school districts served the Westminster area—Baker District No. 25, established in 1875, Westminster District No. 9, established in 1880, and Berkeley Garden District No. 98, established in 1917. The three districts were fiercely independent and extremely competitive. Each of the districts maintained a grade school offering grades one through eight for the generally low income farm families that made up its constituency. Each district assumed the responsibility of paying tuition for those students who wished to attend high school. The districts sent their eligible students to either Arvada High School or North High School in Denver. In 1908 Westminster University opened a private high school named “The Academy.” The \$100 yearly tuition put this alternative out of the financial reach of most Westminster area families.

Increasing numbers of students wanting to attend high school caused each of the three Westminster area school districts to consider building its own high school. The thinking at the time was that the first district to build a high school would rise in stature over its rivals. However, the cost of constructing such a school remained beyond the means of any one district.

Westminster School District No. 9 took the lead when in 1928 it acquired a large piece of land adjacent to its existing elementary school. The immediate proximity of water, sewer and electrical connections made this an attractive and cost effective location for the construction of a high school. The other two districts grudgingly came to accept the logic of locating a high school on the 72nd Avenue parcel. However, before they would consider participating in the construction and operational costs, they demanded that a new school district be created to own and operate the high school and that its board consist of a representative from each of the three existing districts.

A bond issue election was scheduled for 1929 with voters in districts 9, 25, and 98 being eligible to cast ballots at their respective elementary school. The amount of indebtedness was set at \$21,500 for the purpose of erecting a high school building. The vote was unanimous in the affirmative in all three districts. Although the bond issued call for the three districts to share responsibility for the debt, county records indicate the bonds were actually issued by District No. 9. This may have been because the land for the school building was located in and owned by District No. 9.

Adams County School District No. 3 was established to administer the new, appropriately named, Union High School. The new school board consisted of H.K Hazzard, president and representative of District No. 98,

**United States Department of the Interior
National Park Service**

**National Register of Historic Places
Continuation Sheet**

Union High School
Adams County, Colorado

Section number 8 Page 7

George A. Hughes, secretary and representative of District No. 9, and Wilhelmina Ketelsen, treasurer and representative of District No. 25. Union High School opened in the fall of 1929, with classes being held next door at the Westminster Elementary School while awaiting the completion of the Union High School building.

The original plans for the school included an auditorium and gymnasium in addition to the classroom space. Cost considerations resulted in a scaled down plan which eliminated the auditorium and gymnasium. Despite extensive research in all the known archives, no information could be found establishing the identity of the school's architect or builder.

EDUCATIONAL HISTORY

Union High School welcomed its first students to the new building in 1930. There were no seniors in the 1930 school year. Each district agreed to continue funding the tuition of their senior students at Arvada or North High Schools so they could graduate with their classmates. When Union High School opened, only two other high schools existed in Adams County. In addition to serving the matriculating pupils in districts 9, 25, and 98, Union also served students from the districts of Retreat Park, Mapleton, Utah Junction, Broomfield and Eastlake.

In 1939 a gymnasium and classroom addition helped the school to accommodate more students and to provide additional programs. The addition included a gymnasium with stage, a locker room, and four classrooms.

Union High School saw its last graduating class in 1949. Steadily increasing enrollments lead to the construction of a new high school and the conversion of the existing building into a junior high school. The final graduating class was also the school's largest. A full list of senior class sizes is shown below:

1929 – 0	1936 – 19	1943 – 39
1930 – 0	1937 – 20	1944 – 40
1931 – 4	1938 – 28	1945 – 39
1932 – 7	1939 – 35	1946 – 34
1933 – 10	1940 – 30	1947 – 45
1934 – 12	1941 – 35	1948 – 42
1935 – 16	1942 – 38	1949 – 48

Union High School provided the students of the Westminster area with a single high school in place of the previous multiple school, out-of-district arrangement. The school helped to create a sense of community among its students and their parents, providing a common educational experience for an entire generation of Westminster residents.

PUBLIC WORKS ADMINISTRATION ADDITION

The Public Works Administration (PWA) was one of many New Deal era economic recovery programs designed to stimulate employment while improving public infrastructure across the nation. The program provided matching funds to state, county and local governments for public works projects. Educational buildings were regularly funded and constructed by the PWA. Several Colorado colleges took advantage of the program to erect new academic and support buildings. Colorado college buildings constructed with the aid of PWA funds include: Rex Gymnasium at Adams State College, Alamosa; Savage Library at Western State College, Gunnison; West Orman Campus at Pueblo Junior College, Pueblo; and 15 new or enlarged buildings on the campus of the University of Colorado in Boulder, including the rehabilitation of the 1903 library. At

**United States Department of the Interior
National Park Service**

**National Register of Historic Places
Continuation Sheet**

Union High School
Adams County, Colorado

Section number 8 Page 8

Colorado A&M (now Colorado State University) the PWA provided funding for three buildings—the original portion of the Veterinary Medicine Building, the Agriculture (now Shepardson) Building and the Johnson Student Union (now Johnson Hall). Golden's School of Mines used the PWA to fund a house for its president and Colorado State College for Education (now University of Northern Colorado) turned to the PWA for the construction of faculty apartments.

Less is known about the full extent of PWA's involvement with secondary school construction in Colorado. The similarly named Works Progress Administration (WPA) Depression era program participated widely in school projects, including an elementary school in Meeker, a junior high school in Fruita, and a gymnasium addition to the school in Hartman. The PWA helped finance a 1936 addition to the school in Alma (National Register listed) consisting of a combination gymnasium/auditorium and three classrooms. Walsenburg turned to the agency for assistance with the construction of a combined grade and junior high school. Boulder tapped into PWA funds for the construction of its half-million dollar high school. Denver combined a \$192,500 gift from Claude Boettcher with a \$157,500 PWA grant to fund the construction of the Boettcher School for Crippled Children (formerly National Register listed; demolished in 1995).

The WPA, administered by Harry Hopkins, made jobs available by backing small and medium-sized ventures. PWA, directed by Interior Secretary Harold Ickes, concentrated on larger relief undertakings. The PWA employed fewer people than the WPA, often only a couple of thousand a month. Because they were usually skilled persons hired by private contractors, PWA avoided much of the criticism that dogged the WPA regarding its make-work projects. Slow to start approving projects, Harold Ickes's cautious approach paid long-term dividends. Carefully planned projects backed by local financing, ranging from 55 to 75 percent, insured public support. George M. Bull headed PWA administration in Colorado.

After 1939 the PWA focused largely on defense projects. Thus the Union High School addition was one of the last PWA projects completed in Colorado. Planning for the anticipated gymnasium addition revealed that a few loose ends remained from the complicated process that resulted in the building of the school and the establishment of Union High School District No. 3. While the new district may have administered the high school, the land and building remained the property of District No. 9. A new \$41,000 bond issue approved by voters in 1938 included \$18,000 to be paid to District No. 9 to allow the transfer of Union High School to District No. 3. The remaining \$23,000 was added to the PWA funds to cover the cost of constructing the addition. R.O. Parry served as architect on the addition and Paul M. Newstrom functioned in the capacity of general contractor.

**United States Department of the Interior
National Park Service**

**National Register of Historic Places
Continuation Sheet**

Union High School
Adams County, Colorado

Section number 9/10 Page 9

BIBLIOGRAPHY

Century of Education in the Westminster Area. Westminster, CO: Westminster Historical Society, 1993.

Leonard, Stephen J. *Trials and Triumphs: A Colorado Portrait of the Great Depression, With FSA Photographs.* Niwot, CO: University Press of Colorado, 1993.

Noel, Thomas J. *Buildings of Colorado.* New York: Oxford University Press, 1997.

PWA projects, Site Files Database, Office of Archaeology and Historic Preservation, Colorado Historical Society, Denver.

Union High School annuals, 1934 – 1949.

GEOGRAPHICAL DATA

VERBAL BOUNDARY DESCRIPTION

Beginning at a point 265.61 feet East of the Southwest corner of Section 32, Township 2 South, Range 68 West thence East 332.01 feet, thence North 328 feet, thence West 332.01 feet, thence south 328 feet to the point of beginning, excepting a strip 30 feet wide on the South side thereof reserved for County Road.

BOUNDARY JUSTIFICATION

The nomination includes all the property historically associated with Union High School during the period of significance, 1929 -1949.

**United States Department of the Interior
National Park Service**

**National Register of Historic Places
Continuation Sheet**

Union High School
Adams County, Colorado

Section number ____ Page 10

PHOTOGRAPH LOG

The following information pertains to photograph numbers 1-20 except as noted:

Name of Property: Union High School
Location: Adams County, Colorado
Photographer: Kay Michaelson
Date of Photographs: May-June 1999
Negatives: Bowles House Museum, P.O. Box 492, Westminster, CO 80030

Photo No. Photographic Information

- 1 Facade (south elevation), view to the northwest. Original building on right, addition on left.
- 2 Facade (south elevation), view to the northeast. Original building on right, addition on left.
- 3 North (rear)elevation of original building, view to the southwest.
- 4 West and north elevations of addition, view to the southeast.
- 5 East elevation of original building, view to the northwest.
- 6 Brick detail, original building.
- 7 Public Works Administration plaque, interior, addition.
- 8 Main entry plaque, original building, south elevation, view to the north.
- 9 Shop building, east elevation, view to the southwest.
Photographer: Linda Cherrington
- 10 Shop building, east elevation, view to the southwest.
Photographer: Linda Cherrington
- 11 Interior, second-floor office in original building.
Photographer: Linda Cherrington
- 12 Interior, second-floor classroom in original building.
Photographer: Linda Cherrington
- 13 Interior, second-floor hallway, building addition.
Photographer: Linda Cherrington
- 14 Interior, stairwell, building addition.
Photographer: Linda Cherrington

**United States Department of the Interior
National Park Service**

**National Register of Historic Places
Continuation Sheet**

Union High School
Adams County, Colorado

Section number ___ Page 11

<u>Photo No.</u>	<u>Photographic Information</u>
15	Interior, balcony bleachers in Gymnasium. Photographer: Linda Cherrington
16	Interior, Gymnasium, view to the south. Photographer: Linda Cherrington
17	South and west elevations, original building, view to the northeast. Photographer: unknown; Date of Photograph: 1932.
18	South and west elevations, original building, view to the northeast. Photographer: unknown; Date of Photograph: 1933.
19	South elevation of east elevation elevator tower, view to the north. Photographer: Dale Heckendorn; Date of Photograph: 11-3-1999.
20	North elevation of east elevation elevator tower, view to the south. Photographer: Dale Heckendorn; Date of Photograph: 11-3-1999.

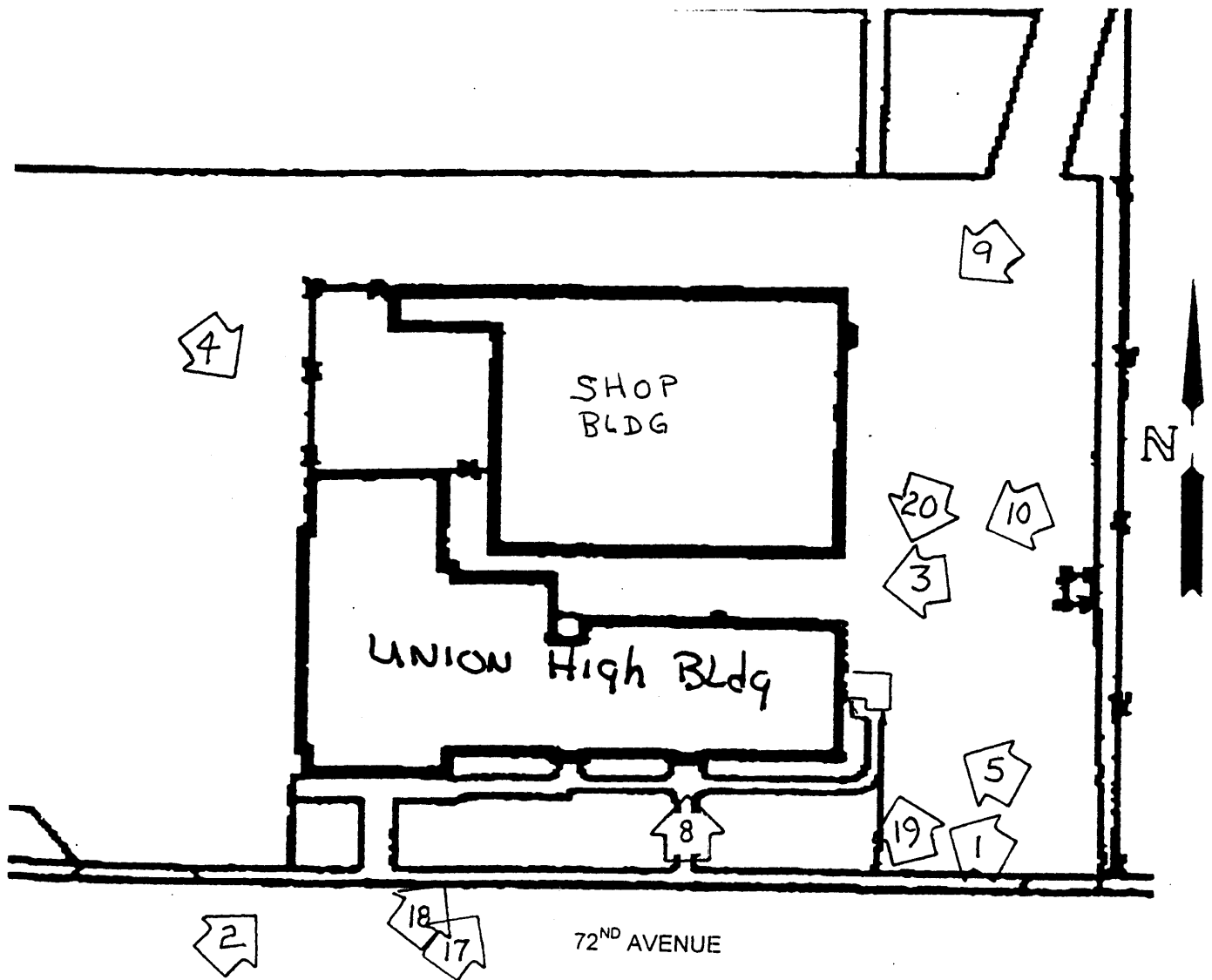
United States Department of the Interior
National Park Service


National Register of Historic Places
Continuation Sheet

Section number ____ Page 12

Union High School
Adams County, Colorado

Figure 3
PHOTOGRAPHIC VIEWS



 Photograph Number, Location and View

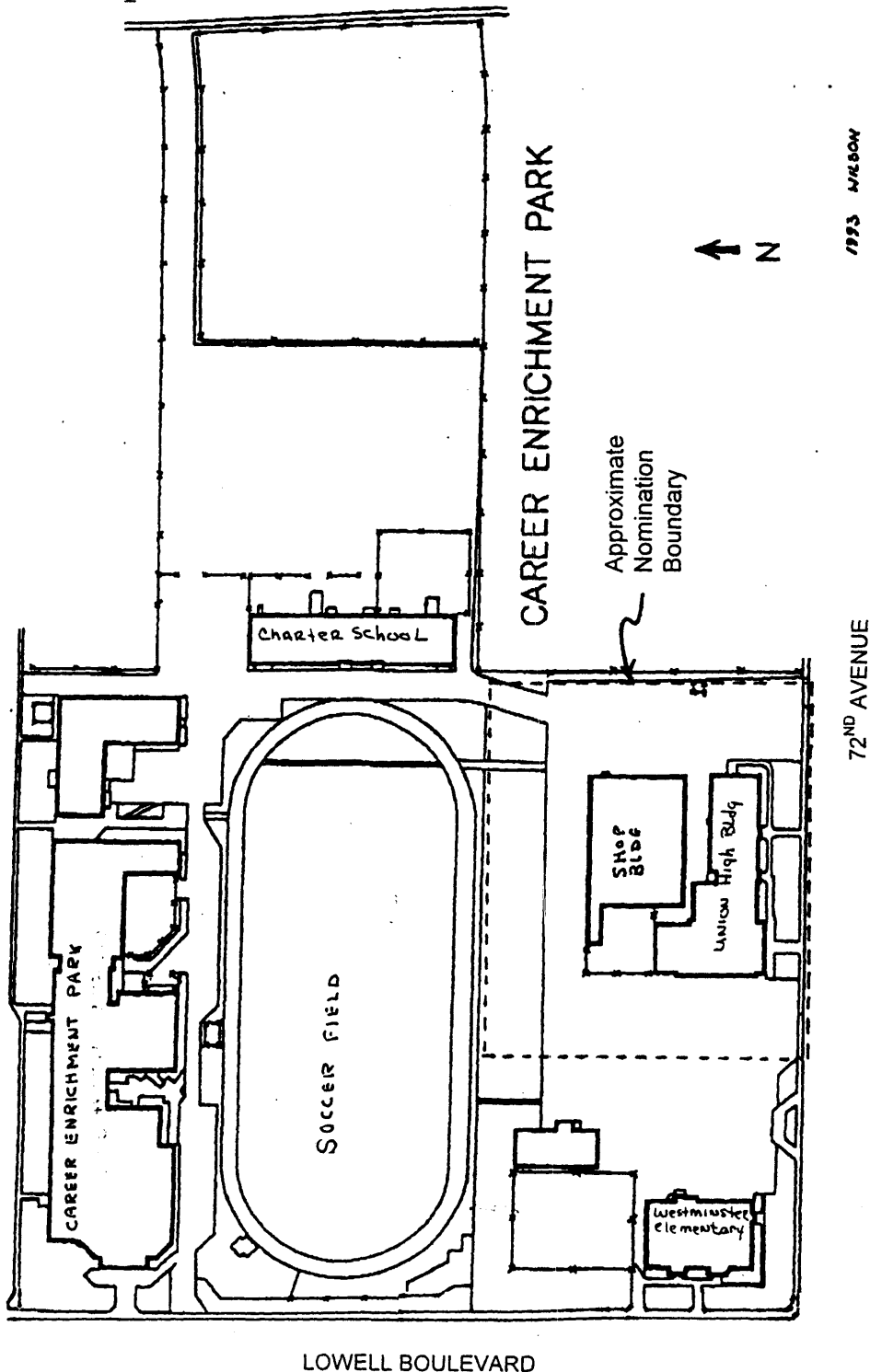
United States Department of the Interior
National Park Service

National Register of Historic Places
Continuation Sheet

Section number ___ Page 13

Union High School
Adams County, Colorado

Figure 4
SITE PLAN



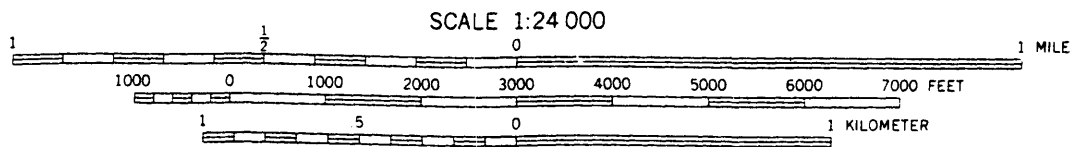
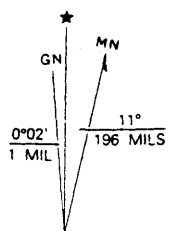
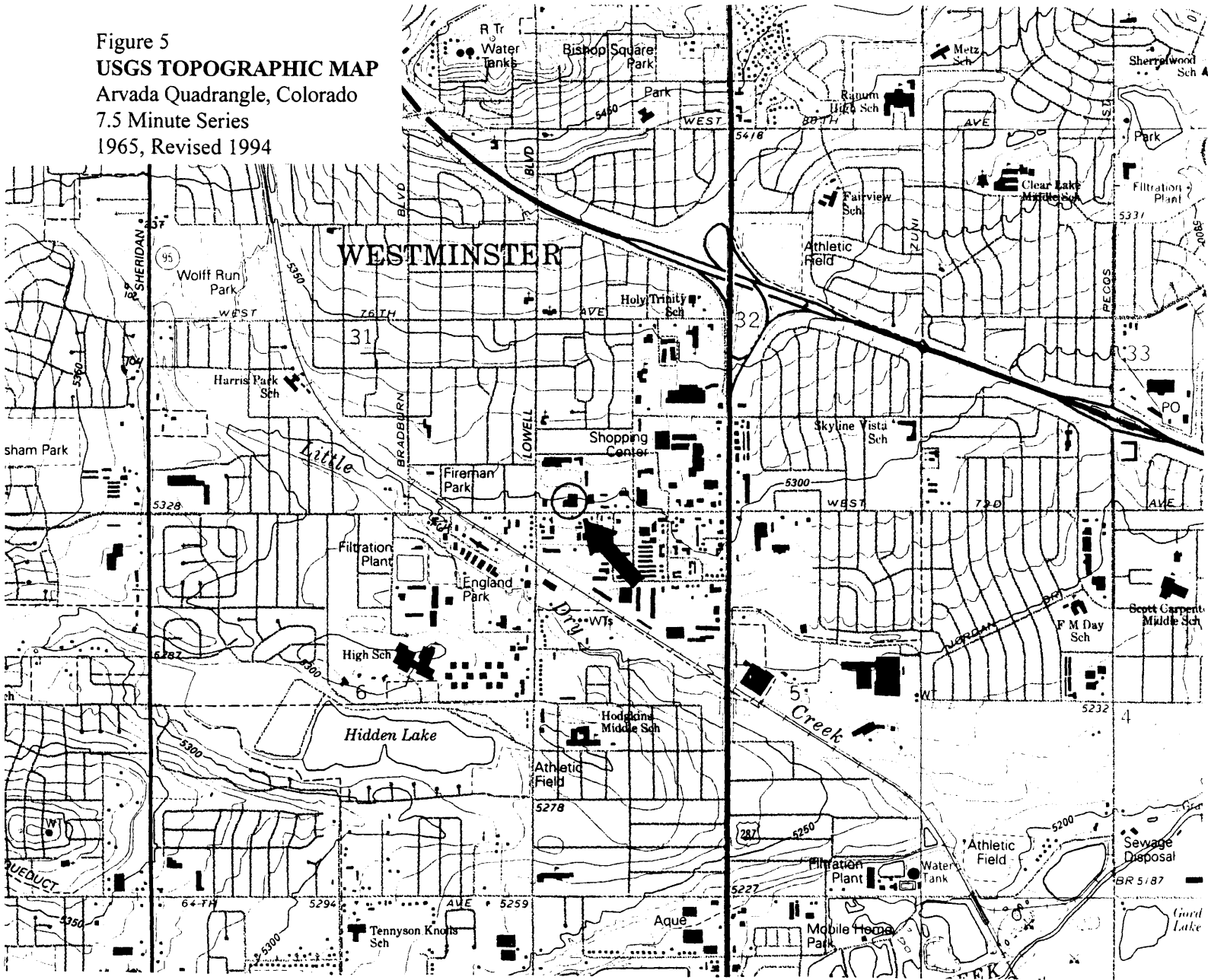
United States Department of the Interior
National Park Service

National Register of Historic Places
Continuation Sheet

Section number Page 14

Union High School
Adams County, Colorado

Figure 5
USGS TOPOGRAPHIC MAP
Arvada Quadrangle, Colorado
7.5 Minute Series
1965, Revised 1994



CONTOUR INTERVAL 10 FEET
NATIONAL GEODETIC VERTICAL DATUM OF 1929