

United States Department of the Interior  
National Park Service  
National Register of Historic Places  
Registration Form

1306

This form is for use in nominating or requesting determination for individual properties and districts. See instruction in *How to Complete the National Register of Historic Places Registration Form* (National Register Bulletin 16A). Complete each item by marking "x" in the appropriate box or by entering the information requested. If an item does not apply to the property being documented, enter "N/A" for "not applicable." For functions, architectural classification, materials and areas of significance, enter only categories and subcategories from the instructions. Place additional entries and narrative items on continuation sheets (NPS Form 10-900a). Use a typewriter, word processor, or computer, to complete all items.

1. Name of Property

historic name Phillips County Courthouse

other names/site number 5PL.19

2. Location

street & number 221 Interocean Ave. [N/A] not for publication

city or town Holyoke [N/A] vicinity

state Colorado code CO county Phillips code 095 zip code 80734

3. State/Federal Agency Certification

As the designated authority under the National Historic Preservation Act, as amended, I hereby certify that this  nomination  request for determination of eligibility meets the documentation standards for registering properties in the National Register of Historic Places and meets the procedural and professional requirements set forth in 36 CFR Part 60. In my opinion, the property  meets  does not meet the National Register criteria. I recommend that this property be considered significant  nationally  statewide  locally. ( See continuation sheet for additional comments.)

Mark Wolfe  
Signature of certifying official/Title

Deputy State Historic Preservation Officer

11/1/07  
Date

Office of Archaeology and Historic Preservation, Colorado Historical Society  
State or Federal agency and bureau

In my opinion, the property  meets  does not meet the National Register criteria.  
( See continuation sheet for additional comments.)

Signature of certifying official/Title

Date

State or Federal agency and bureau

4. National Park Service Certification

I hereby certify that the property is:

- entered in the National Register  
 See continuation sheet.
- determined eligible for the  
National Register  
 See continuation sheet.
- determined not eligible for the  
National Register.
- removed from the  
National Register
- other, explain  
 See continuation sheet.

Signature of the Keeper

Date of Action

Jonda McCallard

12/28/07

Phillips County Courthouse  
Name of Property

Phillips County /Colorado  
County/State

### 5. Classification

#### Ownership of Property

(Check as many boxes as apply)

- private
- public-local
- public-State
- public-Federal

#### Category of Property

(Check only one box)

- building(s)
- district
- site
- structure
- object

#### Number of Resources within Property

(Do not count previously listed resources.)

Contributing

Noncontributing

1	3	buildings
0	0	sites
0	0	structures
0	0	objects
1	3	Total

#### Name of related multiple property listing.

(Enter "N/A" if property is not part of a multiple property listing.)

New Deal Resources on Colorado's Eastern Plains

#### Number of contributing resources previously listed in the National Register.

0

### 6. Function or Use

#### Historic Function

(Enter categories from instructions)

GOVERNMENT/Courthouse

#### Current Functions

(Enter categories from instructions)

GOVERNMENT/Courthouse

### 7. Description

#### Architectural Classification

(Enter categories from instructions)

Modern Movements: Moderne

#### Materials

(Enter categories from instructions)

foundation Concrete

walls Brick

roof Asphalt

other Terra Cotta

#### Narrative Description

(Describe the historic and current condition of the property on one or more continuation sheets.)

United States Department of the Interior  
National Park Service  
**National Register of Historic Places**  
**Continuation Sheet**

Phillips County Courthouse  
Phillips County, Colorado

Section number 7 Page 1

New Deal Resources on Colorado's Eastern Plains MPS

---

## DESCRIPTION

Phillips County is located in northeastern Colorado, bordering Nebraska. The county seat is Holyoke. The Phillips County Courthouse lies in a commercial area near the center of town. The courthouse is situated near the center of a city block (photo 1, drawing 1). The block is bounded by Interocean Avenue, Campbell Avenue, Emerson Street, and Furry Street. The courthouse faces west onto Interocean Avenue. Grass lawns are on the north, west and south sides of the courthouse. A paved parking lot is to the east. There are many mature trees around the courthouse, including two on the west side of the building that partially obscure the facade. Three other buildings are positioned at the northeast corner of the block: a jail (ca. 1927) and a more recent sheriff's department building and garage.

The Phillips County Courthouse is a flat-roofed, two-and-a-half-story plus basement building. It measures 61' x 83'. The building is composed of a center section with flanking wings. The center section projects slightly beyond the wings on the west and east sides. The center section is also taller than the wings, creating a partial third story (drawings 2 and 3). The building rests on a brick foundation and is clad in buff brick laid in a common bond pattern except for the terra cotta covering the upper portion of the center section. Terra cotta quoins decorate the corners of the building. Stringcourses at the foundation, water table, and between the first and second floors are also composed of terra cotta blocks. The building's original paired, single-light, metal-framed casement windows are intact (photo 3). The county has installed multi-light storm windows behind the original windows to reduce drafts.

The west facade has seven bays (photo 2, drawing 2). The center five bays project slightly forward from the main building. On the first floor, quoins distinguish the center section from the rest of the facade. There are six windows and a doorway on the first floor. Five windows with transoms are located on the center section on the second story. Blank openings filled with brick are located on either side of the center section; these brick-filled openings are an original feature. On the second story, smooth terra cotta blocks framed by terra cotta pilasters cover the center section. The name, "Phillips County Court House," is prominently etched into the facade and painted blue; foliated medallions of terra cotta frame the text. The entrance is centered on the facade. The entrance is composed of vertical, grooved, curvilinear piers topped by a terra cotta band that curves out over the entrance doors (photo 4). Seven concrete steps lead up to the entrance. The double entry doors and transom have square lights with chamfered corners. At the cornice, a band of plain terra cotta is interspersed with terra cotta tiles with a blue, foliated pattern. A row of dentils is located beneath the band of terra cotta. The cornice is taller above center section and steps down to the end bays. The building facade mixes elements of several styles. The angular lines, stepped facade, terra cotta decoration, and metal casement windows are all common elements of Art Deco buildings. The quoins, dentils, pilasters, and foliation are all reminiscent of the Beaux Arts style. The building's distinctive entry is Moderne in style.

On the south side, there are six evenly spaced windows on the first and second stories (photos 5 and 6, drawing 3). At the eastern end of the second story, three windows have glass block infill installed behind the original casement windows. Three windows are located at the partial third story. Four windows are located on the basement level. A small, flat-roofed extension sheltering stairs leading to the basement was originally located at the center of the south side. Ca. 1989, a larger basement entrance replaced the original entrance. Though clearly a modern addition, the buff brick and terra cotta detailing incorporates elements of the courthouse design.

United States Department of the Interior  
National Park Service  
**National Register of Historic Places**  
**Continuation Sheet**

Phillips County Courthouse  
Phillips County, Colorado

Section number 7 Page 2

New Deal Resources on Colorado's Eastern Plains MPS

On the east side, there are three windows on the first story, six windows on the second story, and one window at the partial third story (photos 6 and 7, drawing 3). The southernmost window on the second story has glass block infill behind the original casement window. There are three windows at the basement level. A brick chimney is located at the north end of the center section. A single-story, hipped roof addition extends across the south half of the west side and serves as an elevator lobby. A brick elevator shaft extends upwards from the center of the addition. Constructed at the same time as the addition on the south side, it also uses buff brick and a terra cotta stringcourses to reference the courthouse design.

On the north side, there are six window openings on the first and second stories (photo 8, drawing 2). The two middle windows on each floor are set close together while the other windows are more widely spaced. Brick fills one opening on the first story and two on the second story. Construction plans show that the brick infill is original. Three window openings are located at the partial third floor. There are four window openings filled with glass block at the basement level; these openings are missing their original casement windows.

The interior features terrazzo floors and stairs (photo 11). The main lobby area has an arched plaster ceiling and the offices have decorated celotex ceilings (photo 10). Much of the original dark-stained woodwork is intact (photo 12).

#### *Non-contributing Buildings*

The jail is located at the northeast corner of the block (photos 13 and 14, drawing 1). Constructed in 1927, this single-story building has a T-shaped plan with a cross-hip roof; asphalt shingles sheath the roof. The jail is constructed of buff brick laid in a running bond. Metal bars cover most of the windows; the other windows are 1-over-1 wood sash type. The original entrance is centered on the west side; a plaque with "Phillips County Jail" is located over the door. The sheriff's office is located immediately west of the jail. It connects to the west side of the jail; partially obscuring the original entrance. The sheriff's office is a single-story, rectangular plan building. A hipped roof sheathed with asphalt shingles covers the building, which is constructed of buff brick laid in a running bond. A garage is located south of the jail. It is a single-story, rectangular plan building. The garage is constructed of buff brick laid in a running bond and covered with a hipped roof sheathed with asphalt shingles. A row of garage doors is located on the east side of the building, leading onto Campbell Avenue. The county constructed the sheriff's office and garage sometime after 1971. The jail is non-contributing due to alterations, and the sheriff's office and garage are non-contributing as they were constructed outside the period of significance.

#### *Integrity*

The Phillips County Courthouse retains a high degree of integrity on the exterior and interior. The only significant alterations have been the construction of additions on the south and east sides. The primary view of the courthouse from Interocean Avenue remains unchanged. The visual impact of the additions is reduced by the use of construction materials similar to the original courthouse building. The buff brick of the additions is different enough to distinguish the additions from the original building, but still blend. A historical photograph of the courthouse shows that there was originally an entrance with a small projecting vestibule centered on the south side of the building. The south addition has simply enlarged this original feature.

United States Department of the Interior  
National Park Service  
**National Register of Historic Places**  
**Continuation Sheet**

Phillips County Courthouse  
Phillips County, Colorado

Section number 7 Page 3

New Deal Resources on Colorado's Eastern Plains MPS

---

The courthouse retains almost all of its original metal-framed casement windows. The front entry doors are also original. On the interior, the courthouse retains a high degree of interior finishes and furnishings including terrazzo floors and decorative celotex ceilings. Most offices continue to serve their original function.

The jail, sheriff's office, and garage have a minimal impact on the courthouse. Since the courthouse is located near the center of a spacious lot and these three buildings are located at the northeast corner of the lot, to the rear of the courthouse, they have little visual impact on the courthouse. The single-story buildings are small compared to the scale of the courthouse.

8. Statement of Significance

Applicable National Register Criteria

(Mark "x" in one or more boxes for the criteria qualifying the property for National Register listing.)

- [X] A Property is associated with events that have made a significant contribution to the broad patterns of our history.
[ ] B Property is associated with the lives of persons significant in our past.
[X] C Property embodies the distinctive characteristics of a type, period, or method of construction or represents the work of a master, or possesses high artistic values, or represents a significant and distinguishable entity whose components lack individual distinction.
[ ] D Property has yielded, or is likely to yield, information important in prehistory or history.

Criteria Considerations

(Mark "x" in all the boxes that apply.)

Property is:

- [ ] A owned by a religious institution or used for religious purposes.
[ ] B removed from its original location.
[ ] C a birthplace or grave.
[ ] D a cemetery.
[ ] E a reconstructed building, object, or structure.
[ ] F a commemorative property.
[ ] G less than 50 years of age or achieved significance within the past 50 years.

Narrative Statement of Significance

(Explain the significance of the property on one or more continuation sheets.)

9. Major Bibliographical References

Bibliography

(Cite the books, articles and other sources used in preparing this form on one or more continuation sheets.)

Previous documentation on file (NPS):

- [ ] preliminary determination of individual listing (36 CFR 67) has been requested
[ ] previously listed in the National Register
[ ] previously determined eligible by the National Register
[ ] designated a National Historic Landmark
[ ] recorded by Historic American Buildings Survey
#
[ ] recorded by Historic American Engineering Record
#

Areas of Significance

(Enter categories from instructions)

Politics/Government

Architecture

Periods of Significance

1935-1957

Significant Dates

1935

Significant Person(s)

(Complete if Criterion B is marked above).

N/A

Cultural Affiliation

N/A

Architect/Builder

Groves, Eugene

Primary location of additional data:

- [X] State Historic Preservation Office
[ ] Other State Agency
[ ] Federal Agency
[ ] Local Government
[ ] University
[ ] Other

Name of repository:

Colorado Historical Society

United States Department of the Interior  
National Park Service  
**National Register of Historic Places**  
**Continuation Sheet**

Phillips County Courthouse  
Phillips County, Colorado

Section number 8 Page 4

New Deal Resources on Colorado's Eastern Plains MPS

---

## SIGNIFICANCE

The Phillips County Courthouse, constructed between 1935 and 1936 by the Public Works Administration (PWA), is being nominated under the *New Deal Resources on Colorado's Eastern Plains* Multiple Property Documentation Form (MPDF). The Phillips County Courthouse meets the registration requirements of a property type delineated in the MPDF—*Civic and Government Buildings* (subtype: *Courthouses*).

The Phillips County Courthouse meets Criterion A in the area of Politics/Government for its association with President Franklin Roosevelt's New Deal. Constructed by the Public Works Administration (PWA), the courthouse presents an important record of New Deal construction programs in eastern Colorado. Though the dire economic conditions of the Depression affected all of Colorado, drought and dust storms hit the agricultural-based economy of the Eastern Plains especially hard. The courthouse is the only surviving PWA project in Phillips County, and the most intact of all New Deal projects constructed in the county.

The courthouse is also significant for its association with the governing of Phillips County, serving continuously as the courthouse since 1936. Governmental buildings were popular New Deal projects. Several Colorado counties have courthouses or courthouse annexes constructed as New Deal projects. In eastern Colorado, New Deal projects funded new courthouses in Sedgwick and Morgan counties and courthouse annexes in Washington and Baca counties. Phillips County had been working for many years to raise funds to construct a new courthouse, but set these plans aside in the early 1930s due to economic hardships. With the assistance of the PWA, Phillips County could finally achieve its first purpose-built courthouse.

The Phillips County Courthouse is significant under Criterion C as an excellent example of the Moderne style applied to a government building constructed with PWA funds and designed by a prominent Denver architect, Eugene Groves. Designed by established architects and with larger material budgets, PWA projects typically had more decorative elements than WPA projects. This is evident in the courthouse's terra cotta detailing. However, the design is still simplified and restrained, reflecting the courthouse's construction during the Depression. The courthouse is the most substantial building in the small, agricultural county of Phillips, a strikingly modern building when constructed.

The period of significance begins in 1935 with the start of construction of the courthouse as a PWA project and ends in 1957. Though the Phillips County Courthouse remains in active use and continues to be vital to the governance of Phillips County, the period of significance ends in 1957 in order to comply with the National Register's fifty-year rule.

### *Historical Background*

The Colorado legislature established Phillips County in 1889. Residents chose Holyoke, incorporated in 1888, as their county seat. Two other buildings served as the Phillips County Courthouse before the current courthouse was constructed. The original courthouse was a frame building constructed as a hotel by early pioneers for a total cost of \$16,000. It was located at the corner of Baxter Avenue and Denver Street. By 1890, the new county had grown to a population of 2,642. Phillips County experienced a dramatic population loss during the drought years of the early 1890s. By 1900, the population had fallen to 1,583. After a population resurgence in the early 1900s, a larger courthouse was needed. In 1904, Phillips County bought the old Burlington Eating House from the railroad

United States Department of the Interior  
National Park Service  
**National Register of Historic Places**  
**Continuation Sheet**

Phillips County Courthouse  
Phillips County, Colorado

Section number 8 Page 5

New Deal Resources on Colorado's Eastern Plains MPS

company for \$3,000 to serve as its new home. The county moved the building from an area east of the train depot to the current courthouse block.

The need and expressed interest for building a new county courthouse began as early as 1924, when the voters approved a bond issue to start raising funds for such a project. By 1931, around \$27,000 had been set aside, but the county stopped the levy when economic hardship began to spread throughout the county. However, with the population reaching 5,797 in 1930, the county greatly needed a new courthouse. In 1933, the Greater Holyoke Club took up the cause of a new courthouse by circulating petitions asking the county commissioners to build a new courthouse as soon as possible. The organization also asked architects for sketches of possible courthouse designs and submitted the designs to the county commissioners. Two Denver architects, Walter A. Simon and Eugene Groves, presented sketches. In November 1933, the county submitted an application for a PWA grant to construct a new courthouse. The proposed courthouse was to cost \$80,000. Phillips County hoped to obtain grants and loans for the \$53,000 over their existing courthouse fund needed for the project. The PWA approved the courthouse project in January 1934, awarding a \$23,000 grant and additional loans. However, the project could not move forward until the next general election when voters could approve the county taking on debt for the courthouse construction. Voters approved a bond issue for the construction in October 1934.

Phillips County received the PWA grant funds in April 1935. In the same month, PWA revoked funding for 38 other projects, totaling more than \$5,000,000. The *Holyoke Enterprise* concluded: "approval of the Phillips County grant in the face of this action is taken to mean that the need of a new courthouse was realized and that the financial condition of the county warranted the grant."

Phillips County chose Eugene Groves as the courthouse architect. Eugene G. Groves (1882-1967) was born in Dana, Indiana and moved to Denver in 1914. He practiced architecture for five decades, gaining renown for his design of numerous educational and government facilities in Colorado. His educational work included numerous buildings at Colorado State University in Fort Collins as well as high schools in Canon City, Golden, Grand Junction, and Aurora. Government facilities included courthouses in Archuleta and Mesa counties. He also designed single-family homes and commercial buildings, such as the Nordlund House in Denver and the Farmers State Bank in Fort Morgan. Groves incorporated a variety of styles in his designs including Art Deco, Art Moderne, Beaux Arts, Italian Renaissance Revival, and Colonial Revival. During the 1930s, Groves designed several New Deal buildings including gymnasiums in Akron and Otis, an elementary school in Golden, the Fort Lewis Library west of Durango, and a courthouse in Morgan County. Completed in 1936, the Morgan County Courthouse shares many similar features with the Phillips County Courthouse. For both courthouses, Groves chose a restrained, simple Moderne style which is representative of Depression-era government buildings. The Phillips County and Morgan County courthouses both feature symmetrical facades, buff brick, and terra cotta bas-relief panels. However, in the Morgan County Courthouse Groves employed Art Deco detailing, with stepped brick pilasters and a central tower, creating a design with vertical emphasis. In the Phillips County Courthouse, Groves relied more on terra cotta elements for detailing with terra cotta facing, quoins, and stringcourses prominent elements of the design.

In June, the county moved its offices out of the existing courthouse and into the First National Bank Building. Demolition of the old building began on June 17, 1935 using Federal Emergency Relief Administration (FERA) labor. Construction bids for the new courthouse also began in June. The county awarded Walter Knutzen & Sons of Kearney, Nebraska, the general construction contract for \$61,800.



United States Department of the Interior  
National Park Service  
**National Register of Historic Places**  
**Continuation Sheet**

Phillips County Courthouse  
Phillips County, Colorado

Section number 8 Page 6

New Deal Resources on Colorado's Eastern Plains MPS

---

George Zeiler received the plumbing contract for \$2,750 and the electrical contract for \$2,500. Johnson & Davis of Denver obtained the heating contract for \$6,114.

Excavation of the new building began July 15, 1935. Workers poured the concrete for the footings and foundation in early August, and brick laying began in early September. Masons laid the cornerstone, made of Bedford stone, on September 13, 1935, to much fanfare. The Masonic lodges of Haxtun and Holyoke arranged the cornerstone ceremony. Speakers included Governor Edward C. Johnson and State Supreme Court judges Ben C. Hilliard and Hazlett P. Burke.

The county originally expected the courthouse to be complete by January 15, 1936, but due to several delays in the arrival of materials, the project fell behind schedule. The contractor increased the size of the construction crew to help speed completion. By the end of January, the courthouse was nearing completion with just the interior finishes and fixtures remaining. In February, the county contracted two Denver firms, C.F. Hoeckel Blank Book & Lithographing and W.H. Kistler Stationary, to supply fixtures and equipment for the courthouse. Construction was completed on March 15, 1936. The Phillips County Board of Commissioners formally accepted the courthouse building on May 8, 1936.

The new courthouse was the most substantial and modern building in the county. On May 14, an article in the *Holyoke Enterprise* described the courthouse in great detail, praising its beauty and up-to-date design:

Generously proportioned, it offers an abundance of usable space, scientifically mapped out and equipped, which will materially increase the dispatch with which business can be carried out within its doors. . . . The west facade is beautiful but simple, broad cement steps leading up to a many-paneled doorway of glass and steel. . . . Many find that the spaciousness of the edifice cannot be conceived of from the outside. Rather, the observer must explore the interior, pausing frequently to note the generous, conveniently arranged rooms and the storage space which is provided in and adjoining every office. The gleaming terrazzo floors of the hall and lobby first catch the eye of the visitor as he enters the main portal. This substance, used in the halls, lobbies and lavatories on the two floors of the building and on the staircases throughout, gives a beautiful appearance with the thousands of tiny, many-hued stones dotting the smoothly shining surfaces. . . . Upon crossing the upper lobby from the stairs, persons are confronted by attractive French doors which open into what is by far the most magnificent section of the new courthouse—the district courtroom. . . . the high windows across the upper front of the building light this vast room. The judge's bench is an imposing structure at the extreme north end . . . it is of paneled, dull-finished birchwood, a beautiful example of elegance and dignity in its restrained ornamentation. . . . the boiler room on the northeast houses the key to the building's fine six-thousand dollar heating system. Thermostatic controls and stoker-feeding help make the plant a model in modern, scientific heating.

The newspaper concluded that the new courthouse would be a "source of pride for generations to come."

United States Department of the Interior  
National Park Service  
**National Register of Historic Places**  
**Continuation Sheet**

Phillips County Courthouse  
Phillips County, Colorado

Section number 8 Page 7

New Deal Resources on Colorado's Eastern Plains MPS



The first courthouse (1898-1904), located at the corner of Baxter Avenue and Denver Street.



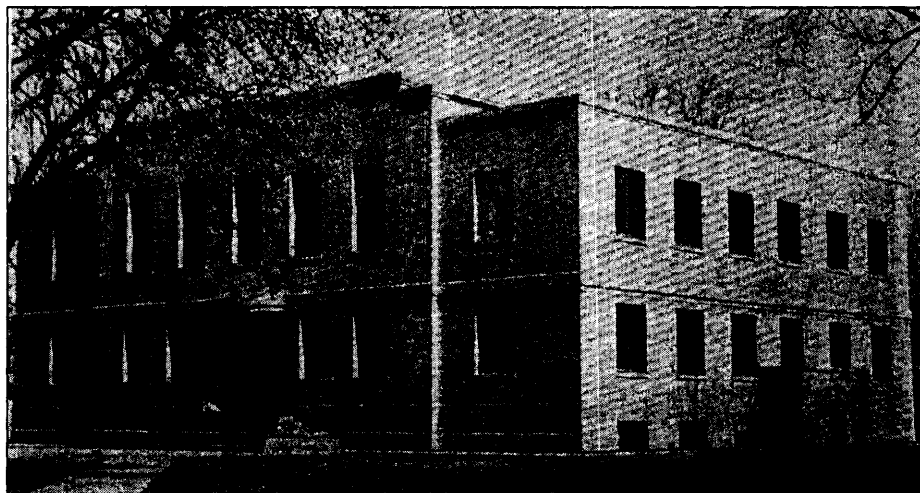
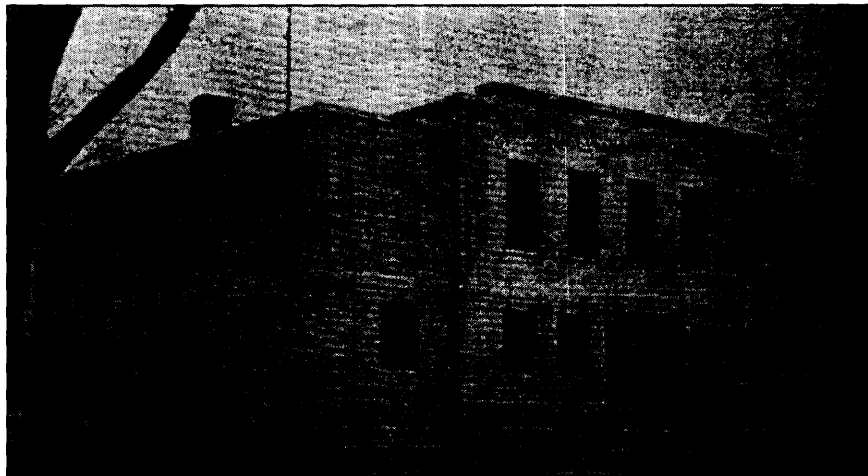
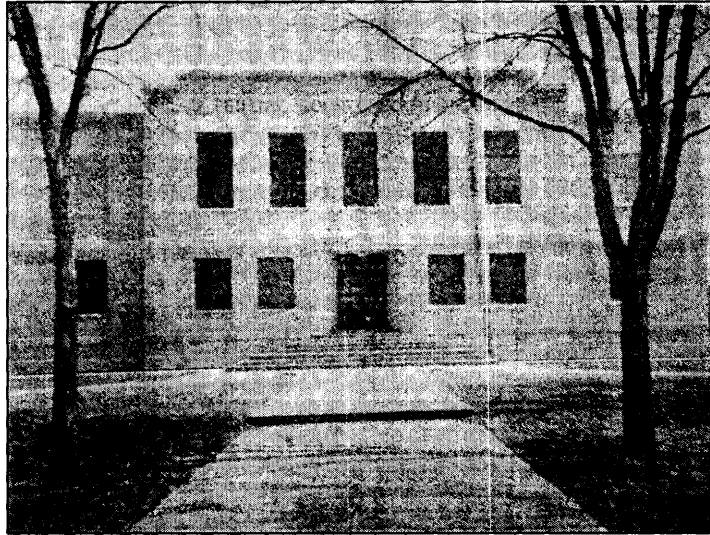
The second courthouse (1904-1935), located on the current courthouse square.

United States Department of the Interior  
National Park Service  
**National Register of Historic Places**  
**Continuation Sheet**

Phillips County Courthouse  
Phillips County, Colorado

Section number 8 Page 8

New Deal Resources on Colorado's Eastern Plains MPS



The current courthouse was completed in 1936. These photographs are from newspaper articles celebrating its opening.

United States Department of the Interior  
National Park Service  
**National Register of Historic Places**  
**Continuation Sheet**

Phillips County Courthouse  
Phillips County, Colorado

Section number 9 Page 9

New Deal Resources on Colorado's Eastern Plains MPS

---

## BIBLIOGRAPHY

"Application for Courthouse Funds Goes to Engineer." *Holyoke Enterprise*, November 23, 1933.

"Board Accepts New Courthouse." *Holyoke Enterprise*, May 14, 1936.

Christman, Abbey. "Phillips County Courthouse." Architectural Inventory Form, August 14, 2006. On file in the Office of Archaeology and Historic Preservation, Colorado Historical Society, Denver, Colorado.

"Cornerstone of New Holyoke Courthouse will be Laid Friday." *Holyoke Enterprise*, September 12, 1935.

"Courthouse Levy Made in 1924." *Holyoke Enterprise*, May 14, 1936.

Deal, Lyn. "Morgan County Courthouse and Jail." National Register of Historic Places Nomination, 2001. On file in the Office of Archaeology and Historic Preservation, Colorado Historical Society, Denver, Colorado.

"Federal Grant of \$23,000 Approved for Courthouse." *Holyoke Enterprise*, April 4, 1935.

Groves, Eugene G. "Historical Guide to Colorado Architects". Colorado Historical Society, Office of Archeology & Historic Preservation website. <http://www.coloradohistory-oahp.org>

"New Courthouse is Nearing Completion" *Holyoke Enterprise*. January 30, 1936.

Phillips County Historical Society. *Those Were the Days*. Holyoke, CO: Phillips County Historical Society, 1988.

"Public Works Grant is For \$22,500; Remainder is Loan." *Holyoke Enterprise*, January 25, 1934.

"View Sketches of New Courthouse." *Holyoke Enterprise*, September 21, 1933.

Wolfenbarger, Deon. "New Deal Resources on Colorado's Eastern Plains," National Register Multiple Property Documentation Form, 2005. On file in the Office of Archaeology and Historic Preservation, Colorado Historical Society, Denver, Colorado.

Phillips County Courthouse  
Name of Property

Phillips County /Colorado  
County/State

## 10. Geographical Data

Acreage of Property 2.53

### UTM References

(Place additional UTM references on a continuation sheet.)

- |    |      |         |          |                            |
|----|------|---------|----------|----------------------------|
| 1. | 13   | 728424  | 4495867  | (NAD 27)                   |
|    | Zone | Easting | Northing |                            |
| 2. |      |         |          |                            |
|    | Zone | Easting | Northing |                            |
| 3. |      |         |          |                            |
|    | Zone | Easting | Northing |                            |
| 4. |      |         |          |                            |
|    | Zone | Easting | Northing | [ ] See continuation sheet |

The UTMS were derived from heads up digitization on Digital Raster Graphic (DRG) maps provided to OAHF by the U.S. Bureau of Land Management.

### Verbal Boundary Description

(Describe the boundaries of the property on a continuation sheet.)

### Boundary Justification

(Explain why the boundaries were selected on a continuation sheet.)

## 11. Form Prepared By

name/title Abbey Christman (for property owner)  
organization Colorado Preservation, Inc. date 5/1/07  
street & number 333 West Colfax Avenue, Suite 300 telephone (303) 893-4260  
city or town Denver state Colorado zip code 80204

## Additional Documentation

Submit the following items with the completed form:

### Continuation Sheets

#### Maps

- A **USGS map** (7.5 or 15 minute series) indicating the property's location.
- A **Sketch map** for historic districts and properties having large acreage or numerous resources.

### Photographs

Representative **black and white photographs** of the property.

### Additional Items

(Check with the SHPO or FPO for any additional items)

## Property Owner

(Complete this item at the request of SHPO or FPO.)

name Phillips County, Board of County Commissioners  
street & number 221 Interocean Ave. telephone (970) 854-2454  
city or town Holyoke state Colorado zip code 80734

**Paperwork Reduction Act Statement:** This information is being collected for applications to the National Register of Historic Places to nominate properties for listing or determine eligibility for listing, to list properties, and to amend existing listings. Response to this request is required to obtain a benefit in accordance with the National Historic Preservation Act, as amended (16 U.S.C. 470 *et seq.*)

**Estimated Burden Statement:** Public reporting burden for this form is estimated to average 18.1 hours per response including time for reviewing instructions, gathering and maintaining data, and completing and reviewing the form. Direct comments regarding this burden estimate or any aspect of this form to the Chief, Administrative Services Division, National Park Service, P.O. Box 37127, Washington, DC 20013-7127; and the Office of Management and Budget, Paperwork Reductions Projects (1024-0018), Washington, DC 20503.

United States Department of the Interior  
National Park Service  
**National Register of Historic Places**  
**Continuation Sheet**

Phillips County Courthouse  
Phillips County, Colorado

Section number 10 Page 10

New Deal Resources on Colorado's Eastern Plains MPS

---

**GEOGRAPHICAL DATA**

**VERBAL BOUNDARY DESCRIPTION**

All of Block 21, the original town of Holyoke.

**BOUNDARY JUSTIFICATION**

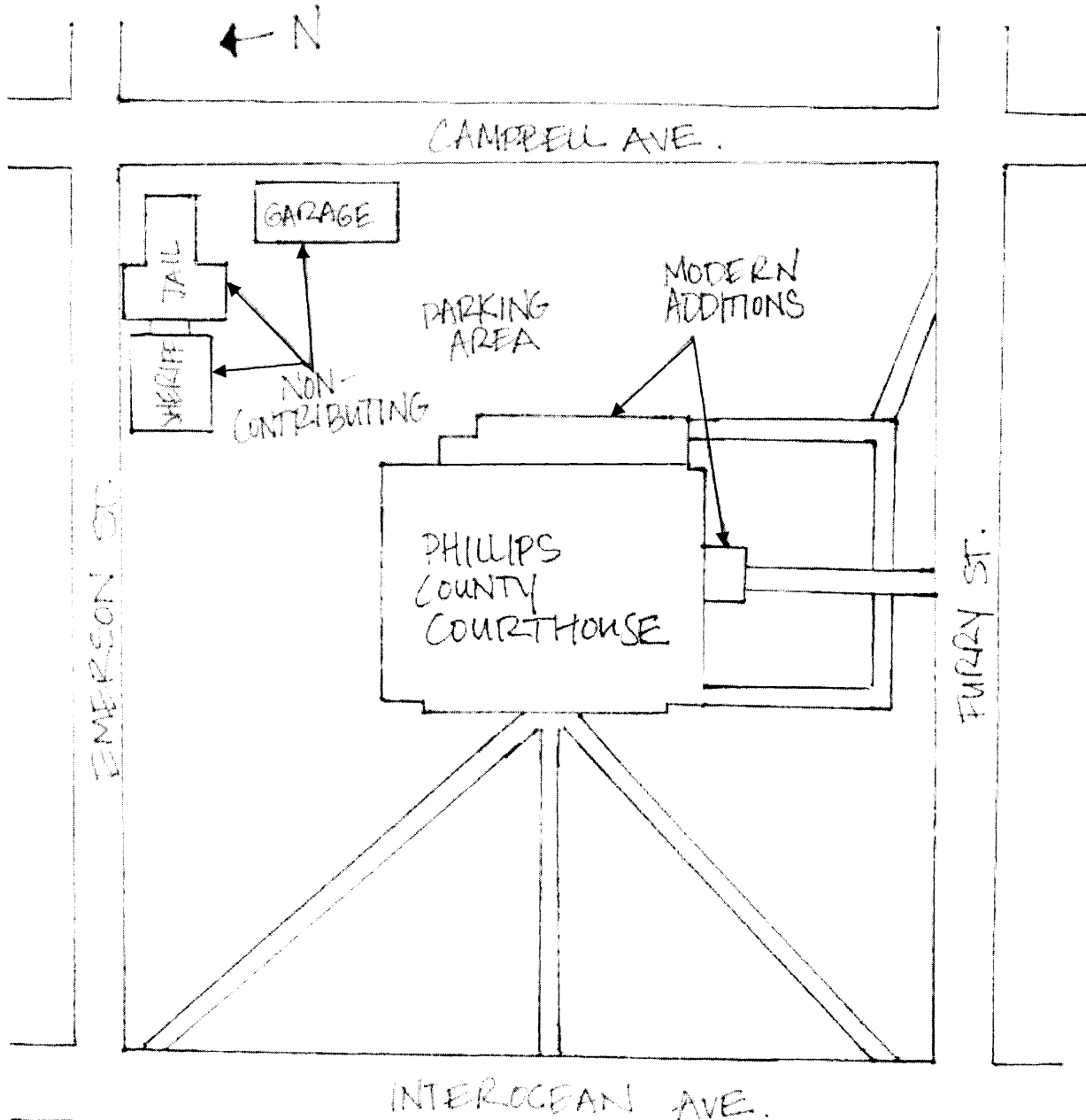
Block 21 contains all the land historically associated with the courthouse.

United States Department of the Interior  
National Park Service  
**National Register of Historic Places**  
**Continuation Sheet**

Phillips County Courthouse  
Phillips County, Colorado

Section number \_\_\_ Page 11

New Deal Resources on Colorado's Eastern Plains MPS



PHILLIPS COUNTY COURTHOUSE  
SITE PLAN  
8/14/06 NOT TO SCALE





United States Department of the Interior  
National Park Service  
National Register of Historic Places  
Continuation Sheet

Phillips County Courthouse  
Phillips County, Colorado

Section number \_\_\_ Page 13

New Deal Resources on Colorado's Eastern Plains MPS

Drawing 2



United States Department of the Interior  
National Park Service  
National Register of Historic Places  
Continuation Sheet

Phillips County Courthouse  
Phillips County, Colorado

Section number \_\_\_ Page 14

New Deal Resources on Colorado's Eastern Plains MPS

Drawing 3



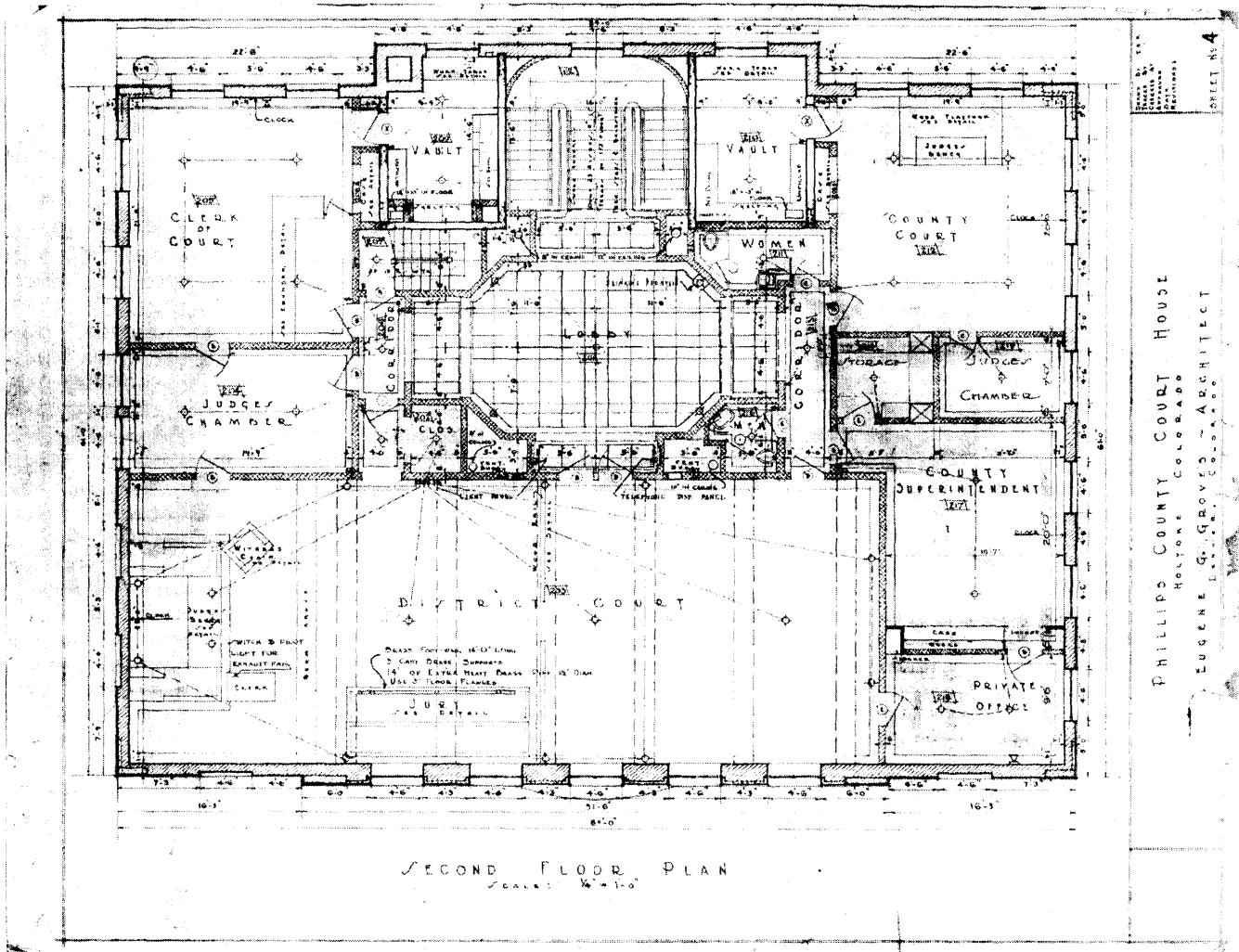
United States Department of the Interior  
National Park Service  
National Register of Historic Places  
Continuation Sheet

Phillips County Courthouse  
Phillips County, Colorado

Section number \_\_\_ Page 15

New Deal Resources on Colorado's Eastern Plains MPS

Drawing 4



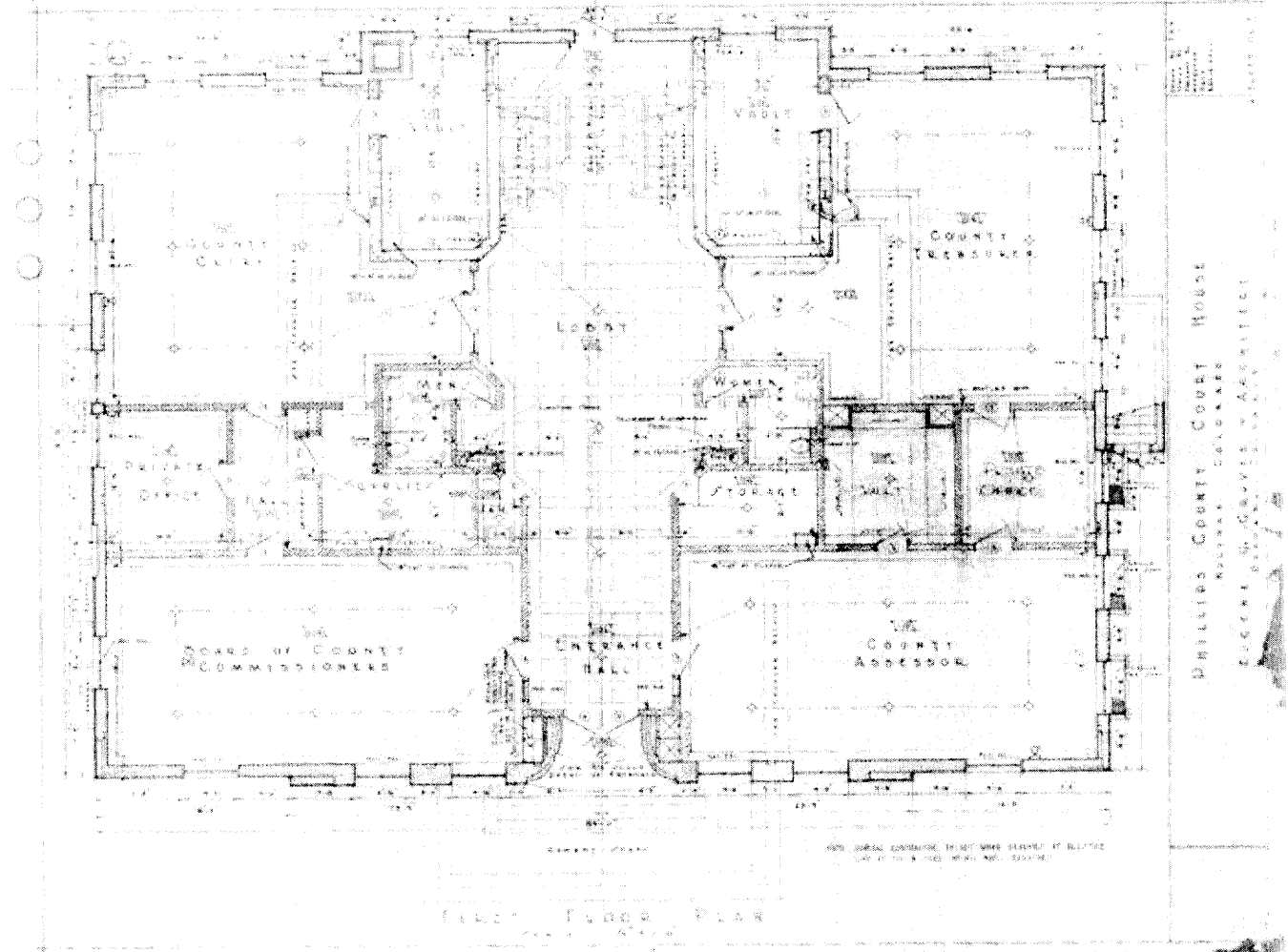
United States Department of the Interior  
National Park Service  
National Register of Historic Places  
Continuation Sheet

Phillips County Courthouse  
Phillips County, Colorado

Section number \_\_\_ Page 16

New Deal Resources on Colorado's Eastern Plains MPS

Drawing 5



United States Department of the Interior  
National Park Service  
**National Register of Historic Places**  
**Continuation Sheet**

Phillips County Courthouse  
Phillips County, Colorado

Section number \_\_\_ Page 17

New Deal Resources on Colorado's Eastern Plains MPS

---

## PHOTOGRAPH LOG

The following information pertains to all photographs

Name of Property: Phillips County Courthouse

Location: 221 Interocean Ave., Holyoke, CO

Photographer: Abbey Christman

Date of Photographs: 8/23/06

Negatives: Digital files submitted to National Register, Washington, D.C.

Photographs printed on HP Premium Photo Paper with HP 100 gray photo cartridge

Photo No.                      Photographic Information

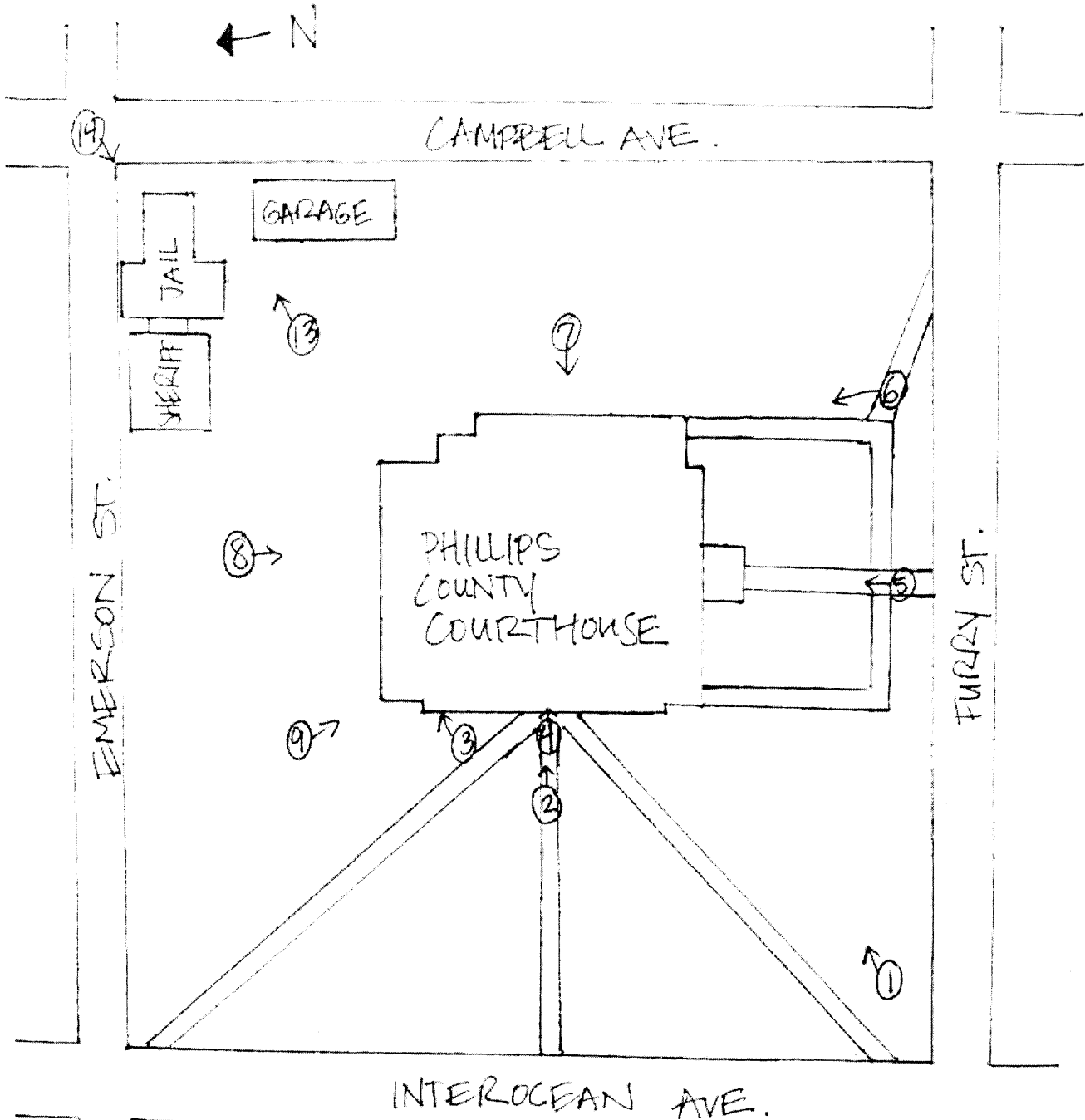
- 1 West and south sides of the courthouse. Facing northeast.
- 2 Facade of courthouse. Facing east.
- 3 Detail of cornice. Facing northeast.
- 4 Detail of entrance. Facing east.
- 5 South side of courthouse. Facing north.
- 6 South and east sides of courthouse. Facing northwest.
- 7 East side of courthouse. Facing west.
- 8 North side of courthouse. Facing south.
- 9 North and west sides of courthouse. Facing southeast.
- 10 Interior, main lobby. Facing west.
- 11 Detail of terrazzo staircase.
- 12 Detail of judge's bench in courtroom.
- 13 Sheriff's office, jail, and garage. Facing northeast.
- 14 North and east sides of jail. Garage visible at left. Facing southwest.

United States Department of the Interior  
National Park Service  
National Register of Historic Places  
Continuation Sheet

Phillips County Courthouse  
Phillips County, Colorado

Section number \_\_\_ Page 18

New Deal Resources on Colorado's Eastern Plains MPS



PHILLIPS COUNTY COURTHOUSE  
 PHOTO KEY      ↗ PHOTO # & DIRECTION  
 8/14/06      NOT TO SCALE

United States Department of the Interior  
National Park Service  
**National Register of Historic Places**  
**Continuation Sheet**

Phillips County Courthouse  
Phillips County, Colorado

Section number      Page 19

New Deal Resources on Colorado's Eastern Plains MPS

**USGS TOPOGRAPHIC MAP**  
Holyoke Quadrangle, Colorado  
7.5 Minute Series

UTM: Zone 13 / 728424 E / 4495867 N (NAD27)  
PLSS: 6th PM, T 7N, R 44W, Sec. 17  
Elevation: 3736 feet

