



140 40
END

SECURITY
NATIONAL

J.B. BOW'S

PORTRAIT
BY
OWNEY

1. 102-120 East Main Street, Knightstown
Historic District
2. Knightstown, Indiana
3. William L. Selm
4. Spring, 1985
5. Historic Knightstown, Inc.
6. Looking northeast
7. 1 of 91



HARDWARE

HARDWARE

MARKET
AYS
ada.

Roxall

NO LEFT
TURN

1. 121-127, 129, & 133, East Main Street
Knightstown Historic District
2. Knightstown, Indiana
3. William L. Selm
4. Spring, 1985
5. Historic Knightstown, Inc.
6. Looking southwest
7. 2 of 91



1. 115-139 East Main Street, Knightstown
Historic District
2. Knightstown, Indiana
3. William L. Selm
4. Spring, 1985
5. Historic Knightstown, Inc.
6. Looking southeast
7. 3 3 of 91



1. 201-217 East Main Street, Knightstown
Historic District
2. Knightstown, Indiana
3. William L. Selm
4. Spring, 1985
5. Historic Knightstown, Inc.
6. Looking south
7. 4 of 91



1. Public Square, Knightstown Historic District
2. Knightstown, Indiana
3. William L. Selm
4. Spring, 1985
5. Indiana DNR/DHPA
6. Looking South
7. 5 of 91



1. 11-19 & 21-29 North Washington, East Side Public Square, Knightstown Historic District
2. Knightstown, Indiana
3. William L. Selm
4. Spring, 1985
5. Historic Knightstown, Inc.
6. Looking northeast
7. 6 of 91



1. 32-38 East Morgan Street, Knightstown
Historic District
2. Knightstown, Indiana
3. William L. Selm
4. Spring, 1985
5. Historic Knightstown, Inc.
6. Looking northwest
7. 7 of 91



1. 362, 370 East Morgan Street, Knightstown
Historic District
2. Knightstown, Indiana
3. William L. Selm
4. Spring, 1985
5. Historic Knightstown, Inc.
6. Looking northwest
7. 8 of 91



1. Knightstown Academy, E. Carey Street
Knightstown Historic District
2. Knightstown, Indiana
3. William L. Seim
4. Spring, 1985
5. Historic Knightstown, Inc.
6. Looking northeast
7. 9 of 919



1. Academy School Yard, E. Carey Street
Knightstown, Historic District
2. Knightstown, Indiana
3. William L. Selm
4. Spring, 1985
5. Indiana DNR/DHPA
6. Looking northeast
7. 10 of 91 10



1. 203 North Adams Street, Knightstown
Historic District
2. Knightstown, Indiana
3. William L. Selm
4. Spring, 1985
5. Indiana DNR/DHPA
6. Looking east
7. Wof91



1. 37 North Adams Street, Knightstown
Historic District
2. Knightstown, Indiana
3. William L. Selm
4. Spring, 1985
5. Indiana DNR/DHPA
6. Looking southeast
7. 12/09/91



1. Friends Church, 212 East Brown Street
Knightstown Historic District
2. Knightstown, Indiana
3. William L. Selm
4. Spring, 1985
5. Indiana DNR/DHPA
6. Looking northeast
7. 13 13 of 91



1. 333,337 E. Main Street, Knightstown
Historic District
2. Knightstown, Indiana
3. William L. Selm,
4. Spring, 1985
5. Indiana DNR/DHPA
6. Looking southeast
7. 14 of 91

4



1. 305 E. Main Street, Knightstown Historic District
2. Knightstown, Indiana
3. William L. Selm
4. Spring, 1985
5. Indiana DNR/DHPA
6. Looking south
7. 15 of 91



1. 235 East Jackson Street, Knightstown
Historic District
2. Knightstown, Indiana
3. William L. Selm
4. Spring, 1985
5. Indiana DNR/DHPA
6. Looking southeast
7. 16 of 91



S ADAMS ST

STOP

1. 227 East Pine Street, Knightstown Historic District
2. Knightstown, Indiana
3. William L. Selm
4. Spring, 1985
5. Indiana DNR/DHPA
6. Looking southwest
7. 17 of 91



1. 302 South Washington Street, Knightstown
Historic District
2. Knightstown, Indiana
3. William L. Selm
4. Spring, 1985
5. Indiana DNR/DHPA
6. Looking northwest
7. 18 of 91



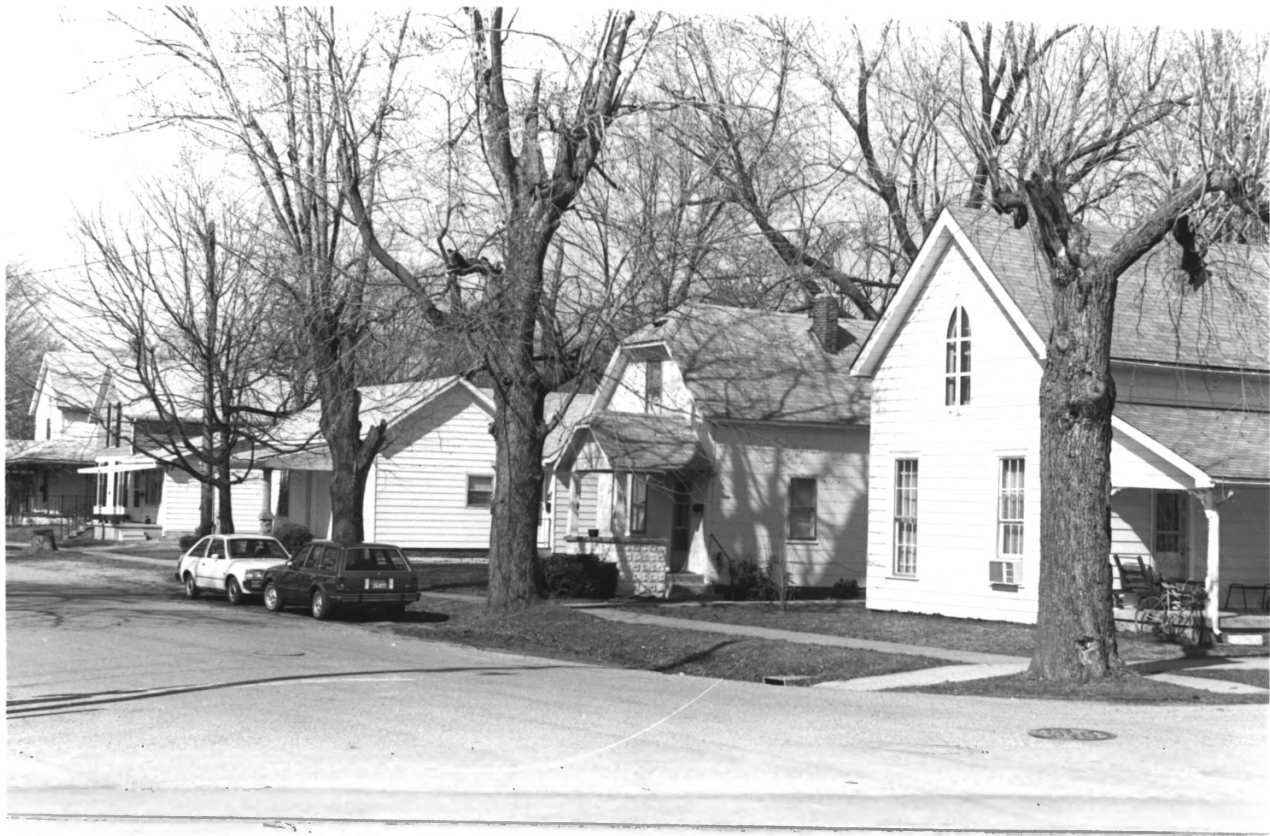
1. 226, 232&238 South Jefferson
Knightstown Historic District
2. Knightstown, Indiana
3. William L. Selm
4. Spring, 1985
5. Indiana DNR/DHPA
6. Looking northwest
7. 19 of 91



1. 125 South Adams Street, Knightstown
Historic District
2. Knightstown, Indiana
3. William L. Selm
4. Spring, 1985
5. Historic Knightstown, Inc.
6. Looking southeast
7. 20 of 91.



1. 130 North McCullum, Knightstown Historic District
2. Knightstown, Indiana
3. William L. Selm
4. Spring, 1985
5. Historic Knightstown, Inc.
6. Looking west
7. ZEPF91



1. 204-230 West Brown Street, Knightstown
Historic District
2. Knightstown, Indiana
3. William L. Selm
4. Spring, 1985
5. Historic Knightstown, Inc.
6. Looking northwest
7. 22 of 91



1. 105 West Pine Street, Knightstown
Historic District
2. Knightstown, Indiana
3. William L. Selm
4. Spring, 1985
5. Historic Knightstown, Inc.
6. Looking southeast
7. 23 of 91



1. Elias Hinshaw House, 16 West Main Street
Knightstown Historic District
2. Knightstown, Indiana
3. William L. Selm
4. Spring, 1985
5. Indiana DNR/DHPA
6. Looking northwest
7. 24 of 91



1. 305 North Adams Street, Knightstown
Historic District
2. Knightstown, Indiana
3. William L. Seim
4. Spring, 1985
5. Indiana DNR/DHPA
6. Looking east
7. 25 of 91



1. 238 East Brown Street, Knightstown
Historic District
2. Knightstown, Indiana
3. William L. Selm
4. Spring, 1985
5. Indiana DNR/DHPA
6. Looking northwest
7. 26 of 91



1. 201 East Main Street, Knightstown
Historic District
2. Knightstown, Indiana
3. William L. Selm
4. Spring, 1985
5. Indiana DNR/DHPA
6. Looking southeast
7. 27 of 91



Methodist Church

1. 27 South Jefferson Street, Knightstown
Historic District
2. Knightstown, Indiana
3. William L. Selm
4. Spring, 1985
5. Indiana DNR/DHPA
6. Looking northeast
7. 28 of 91



1. 39 West Third Street, Knightstown
Historic District
2. Knightstown, Indiana
3. William L. Selm
4. Spring, 1985
5. Indiana DNR/DHPA
6. Looking south
7. 29 of 91

29



1. 143 West Pine Street, Knightstown
Historic District
2. Knightstown, Indiana
3. William L. Selm
4. Spring, 1985
5. Indiana DNR/DHPA
6. Looking southeast
7. 30 of 91

30



1. 146 South Franklin, Knightstown
Historic District
2. Knightstown, Indiana
3. William L. Selm
4. Spring, 1985
5. Historic Knightstown, Inc.
6. Looking northwest
7. 31 of 91

1. Bethel Presbyterian Church, 112 S.
Franklin Street, Knightstown
Historic District
2. Knightstown, Indiana
3. William L. Selm
4. Spring, 1985
5. Historic Knightstown, Inc.
6. Looking southwest
7. 32 of 91



1. 38 South Franklin Street, Knightstown
Historic District
2. Knightstown, Indiana
3. William L. Selm
4. Spring, 1985
5. Indiana DNR/DHPA
6. Looking northwest
7. 33 of 91

33



FOR SALE
GROSSMAN
345-2565

1. 301 West Pine Street, Knightstown
Historic District
2. Knightstown, Indiana
3. William L. Seim
4. Spring, 1985
5. Indiana DNR/DHEA
6. Looking southwest
7. 34 of 91



1. 517 West Main Street, Knightstown
Historic District
2. Knightstown, Indiana
3. William L. Selm
4. Spring, 1985
5. Indiana DNR/DHPA
6. Looking South
7. 35 of 91



1. 105 West Main Street, Knightstown
Historic District
2. Knightstown, Indiana
3. William L. Selm
4. Spring, 1985
5. Indiana DNR/DHPA
6. Looking southwest
7. 3/6 of 91

UNITED STATES POST OFFICE

KNIGHTSTOWN
INDIANA
46140



1. Post Office, 37 North Jefferson, ~~Spring, 1985~~
Knightstown Historic District
2. Knightstown, Indiana
3. William L. Selm
4. Spring, 1985
5. Indiana DNR/DHPA
6. Looking northeast
7. 37 of 91



1. 508 West Main Street, Knightstown
Historic District
2. Knightstown, Indiana
3. William L. Selm
4. Spring, 1985
5. Indiana DNR/DHPA
6. Looking northwest
7. 30 of 91

30



1. Christian Church, 138 West Main Street
Knightstown Historic District
2. Knightstown, Indiana
3. William L. Selm
4. Spring, 1985
5. Indiana DNR/DHPA
6. Looking northeast
7. 39 of 91



1. 133 North Harrison, Knightstown
Historic District
2. Knightstown, Indiana
3. William L. Selm
4. Spring, 1985
5. Indiana DNR/DHPA
6. Looking southeast
7. 40 of 91



1. 424 North Franklin Street, Knightstown
Historic District
2. Knightstown, Indiana
3. William L. Selm
4. Spring, 1985
5. Indiana DNR/DHPA
6. Looking west
7. 41 of 91



1. 433 North Jefferson Street, Knightstown
Historic District
2. Knightstown, Indiana
3. William L. Selm
4. Spring, 1985
5. Indiana DNR/DHPA
6. Looking northeast
7. 4242 of 91



1. 360 North Washington Street, Knightstown
Historic District
2. Knightstown, Indiana
3. William L. Selm
4. Spring, 1985
5. Indiana DNR/DHPA
6. Looking southwest
7. 43 of 91



1. 11-19, 21-29, 33 & 39 North Washington St.
Knightstown Historic District
2. Knightstown, Indiana
3. William L. Selm
4. Spring, 1985
5. Historic Knightstown, Inc.
6. Looking southeast
7. 44 of 91



1. Odd Fellows Hall-Alhambra Theater
21-29 North Washington Street,
Knightstown Historic District
2. Knightstown, Indiana
3. William L. Selm
4. Spring, 1985
5. Indiana DNR/DHPA
6. Looking southeast
7. 4-5 of 91



1. 308 North Washington Street, Knightstown
Historic District
2. Knightstown, Indiana
3. William L. Selm
4. Spring, 1985
5. Indiana DNR/DHPA
6. Looking northwest
7. 46 of 91



ANTIQUE MUSEUM

1. Dennis Furniture Factory, 124-136 West
Carey Street, Knightstown Historic
District
2. Knightstown, Indiana
3. William L. Selm
4. Spring, 1985
5. Indiana DNR/DHPA
6. Looking northeast
7. 47 of 91



J.P. KELLY

WALKER
STREET

WALKER
STREET

WALKER
STREET

G.D. KEM'S
FRANCIS ST.

PORTRAIT
BY
COONEY

FIRST NATIONAL BANK

ESTABLISHED 1864

SINCE 1864
FIRST NATIONAL BANK

FIRST NATIONAL BANK
SINCE 1864
CUSTOMER SERVICE

140

WALKER STREET

1. 108-120 East Main Street, Knightstown
Historic District
2. Knightstown, Indiana
3. William L. Selm
4. Spring, 1985
5. Historic Knightstown, Inc.
6. Looking northwest
7. 48 of 91



1. 126 West Pine Street, Knightstown Historic District
2. Knightstown, Indiana
3. William L. Selm
4. Spring, 1985
5. Indiana DNR/DHPA
6. Looking north
7. 49 of 91

49



1. 2 East Main & 15-19 North Franklin
(Old Town Hall), Knightstown Historic
District
2. Knightstown, Indiana
3. William L. Selm
4. Spring, 1985
5. Historic Knightstown, Inc.
6. Looking northeast
7. 50 of 91



FRANK LAMBERT
PAINT

J. D. KEM'S
DECORATING CENTER

VOTE
FOR
COONEY

AVERY
&
PEYTON
ATTORNEYS

FIRST NATIONAL BANK

ESTABLISHED 1845

1. 106, 108, 110 & 120 East Main Street
Knightstown Historic District
2. Knightstown, Indiana:
3. William L. Selm
4. Spring, 1985
5. Indiana DNR/DHPA
6. Looking north
7. 51 of 91



1. 205,207&215 North Jefferson, Knightstown
Historic District
2. Knightstown, Indiana
3. William L. Selm
4. Spring, 1985
5. Historic Knightstown, Inc.
6. Looking southeast
7. 52 of 91



1. Jefferson & Main (U.S. 40) Sts. Northside, Knightstown Historic District
2. Knightstown, Indiana
3. William L. Selm
4. Spring, 1985
5. Historic Knightstown, Inc.
6. Looking northeast
7. 53 of 91



1. 102 East Main Street, Knightstown
Historic District
2. Knightstown, Indiana
3. William L. Selm
4. Spring, 1985
5. Indiana DNR/DHPA
6. Looking north
7. 54 of 91



The
RESTA

1. 214-22~~7~~ East Main Street, Knightstown,
Historic District
2. Knightstown, Indiana
3. William L. Selm
4. Spring, 1985
5. Indiana DNR/DHPA
6. Looking northwest
7. 55 of 91



1. 2 East Brown Street, Knightstown
Historic District
2. Knightstown, Indiana
3. William L. Selm
4. Spring, 1985
5. Historic Knightstown, Inc.
6. Looking northeast
7. 56 of 91



1. 2-38 East Brown Street, Knightstown
Historic District
2. Knightstown, Indiana
3. William L. Selm
4. Spring, 1985
5. Historic Knightstown, Inc.
6. Looking northeast
7. 57 of 91



1. 106 North Jefferson/38 East Brown
Knightstown Historic District
2. Knightstown, Indiana
3. William L. Selm
4. Spring, 1985
5. Indiana DNR/DHPA
6. Looking northwest
7. 58 of 91



1. 25 East Main Street, Knightstown
Historic District
2. Knightstown, Indiana
3. William L. Selm
4. Spring, 1985
5. Indiana DNR/DHPA
6. Looking southeast
7. 59 of 91

I-4/



1. 204 West Brown Street, Knightstown
Historic District
2. Knightstown, Indiana
3. William L. Selm
4. Spring, 1985
5. Indiana DNR/DHPA
6. Looking north
7. (00 of 9)



1. 104 West Main Street, Knightstown
Historic District
2. Knightstown, Indiana
3. William L. Selm
4. Spring, 1985
5. Indiana DNR/DHPA
6. Looking northwest
7. 61 of 91



1. 124 & 136 N. Washington
Knightstown Historic District
2. Knightstown, Indiana
3. William L. Selm
4. Spring, 1985
5. Historic Knightstown, Inc.
6. Looking northwest
7. 62 of 91



1. Knightstown Public Library, 5 E. Main St.
Knightstown Historic District
2. Knightstown, Indiana
3. William L. Selm,
4. Spring, 1985
5. Indiana DNR/DHPA
6. Looking southeast
7. 63 of 91



1. Main Street (National Road, U.S. 40)
from Harrison Street, Knightstown
Historic District
2. Knightstown, Indiana
3. William L. Selm
4. Spring, 1985
5. Historic Knightstown, Inc.
6. Looking northeast
7. 64 of 91



1. 305, 309, 315 & 325 East Main, Knightstown
Historic District
2. Knightstown, Indiana
3. William L. Seim
4. Spring, 1985
5. Historic Knightstown, Inc.
6. Looking southeast
7. 65 of 91



1. 511,517,&523 North Adams, Knightstown
2. Historic District
2. Knightstown, Indiana
3. William L. Selm
4. Spring, 1985
5. Historic Knightstown, Inc.
6. Looking south
7. 66 of 91
66



1. 117-139 West Brown Street, Knightstown,
Historic District
2. Knightstown, Indiana
3. William L. Selm
4. Spring, 1985
5. Historic Knightstown, Inc.
6. Looking southeast
7. 67 of 91



1. 801, 802, & 803 North Adams Street,
Knightstown Historic District
2. Knightstown, Indiana
3. William L. Selm
4. Spring, 1985
5. Historic Knightstown, Inc.
6. Looking northeast
7. 68 of 91



1. 115,125, &131, South Jefferson
Knightstown Historic District
2. Knightstown, Indiana
3. William L. Selm
4. Spring, 1985
5. Historic Knightstown, Inc.
6. Looking southeast
7. 69 of 91

69



1. 125-137 North McCullum, Knightstown
Historic District
2. Knightstown, Indiana
3. William L. Selm
4. Spring, 1985
5. Historic Knightstown, Inc.
6. Looking northeast
7. 70 of 91



1. 104, 110, & 116 East Brown Street
Knightstown Historic District
2. Knightstown, Indiana
3. William L. Selm
4. Spring, 1985
5. Historic Knightstown, Inc.
6. Looking northeast
7. 71 of 91



1. 147, 139, 135, 131, & 115 South Jefferson
Knightstown Historic District
2. Knightstown, Indiana
3. William L. Selm
4. Spring, 1985
5. Historic Knightstown, Inc.
6. Looking northeast from Pine Street
7. 72 of 91



1. 217, 223, 227, & 235 N. Washington
Knightstown Historic District
2. Knightstown, Indiana
3. William L. Selm
4. Spring, 1985
5. Historic Knightstown, Inc.
6. Looking southeast from Carey Street
7. 73 of 91



1. 131 North Jefferson & 11-17 & 125 East
Warrick, Knightstown Historic
District
2. Knightstown, Indiana
3. William L. Selm
4. Spring, 1985
5. Historic Knightstown, Inc.
6. Looking southwest
7. 74 of 91



1. 17-35 West Brown Street, Knightstown
Historic District
2. Knightstown, Indiana
3. William L. Selm
4. Spring, 1985
5. Historic Knightstown, Inc.
6. Looking southeast
7. 75 of 91



SPEED
LIMIT
20

- Washington
1. 213-235 North ~~Jefferson~~ Street
Knightstown Historic District
 2. Knightstown, Indiana
 3. William L. Selm
 4. Spring, 1985
 5. Historic Knightstown, Inc.
 6. Looking northeast
 7. 76 of 91



1. 1st Block of S. Franklin (East side)
Knightstown Historic District
2. Knightstown, Indiana
3. William L. Seim
4. Spring, 1985
5. Historic Knightstown, Inc.
6. Looking northeast
7. 27 of 91



1. 103 S. Franklin Street & 11 & 17 East
Jackson Street, Knightstown Historic
District
2. Knightstown, Indiana
3. William L. Selm
4. Spring, 1985
5. Historic Knightstown, Inc.
6. Looking southeast
7. 78 of 91



1. 123,129 South Franklin, Knightstown
Historic District
2. Knightstown, Indiana
3. William L. Selm
4. Spring, 1985
5. Historic Knightstown, Inc.
6. Looking southeast
7. 79 of 91

79

3-19

JONATHAN KNIGHT
SQUARE

KNIGHTSTOWN
PIZZA

MIKE'S VIDEO

K-TOWN JEWELERS

FRANK'S BRAND
SHIRTS

54 CUPS

G2-CAFE

MIKE'S VIDEO
CENTER
345-7317



1. 2-20 East Main Street, Knightstown
Historic District
2. Knightstown, Indiana
3. William L. Selm
4. Spring, 1985
5. Historic Knightstown, Inc.
6. Looking northeast
7. 80 of 91



1. 203, 211, 217 S. Washington St.
at SE corner of Wash. & Pine Sts.
Knightstown Historic District
2. Knightstown, Indiana
3. William L. Selm
4. November, 1985
5. Historic Knightstown, Inc.
6. Looking northeast
7. 81



1. 103, 107, 113 & 117 S. Washington
St. at SE corner of Washington
and Jackson Sts. Knightstown,
Historic District
2. Knightstown, Indiana
3. William L. Selm
4. November, 1985
5. Historic Knightstown, Inc.
6. Looking southeast
7. 82



1. 107,43 & 37 S. Adams St.
Knightstown Historic District
2. Knightstown, Indiana
3. William L. Selm
4. November, 1985
5. Historic Knightstown, Inc.
6. Looking northeast
7. 83



1. 406, 418 & 424 E. Brown St. at
NE corner of Brown & Front
Sts. Knightstown Historic
District
2. Knightstown, Indiana
3. William L. Selm
4. November, 1985
5. Historic Knightstown, Inc.
6. Looking northeast
7. 84



1. 122-138 N. Adams St. at SW
corner of Adams & Warrick Sts.
Knightstown Historic District
2. Knightstown, Indiana
3. William L. Selm
4. November, 1985
5. Historic Knightstown, Inc.
6. Looking southwest
7. 85 of 91



1. 411-439 N. Washington St.
Knightstown Historic District
2. Knightstown, Indiana
3. William L. Selm
4. November, 1985
5. Historic Knightstown, Inc.
6. Looking southeast
7. 86 of 91



For Sale
Call Bob
366-7208
Bob

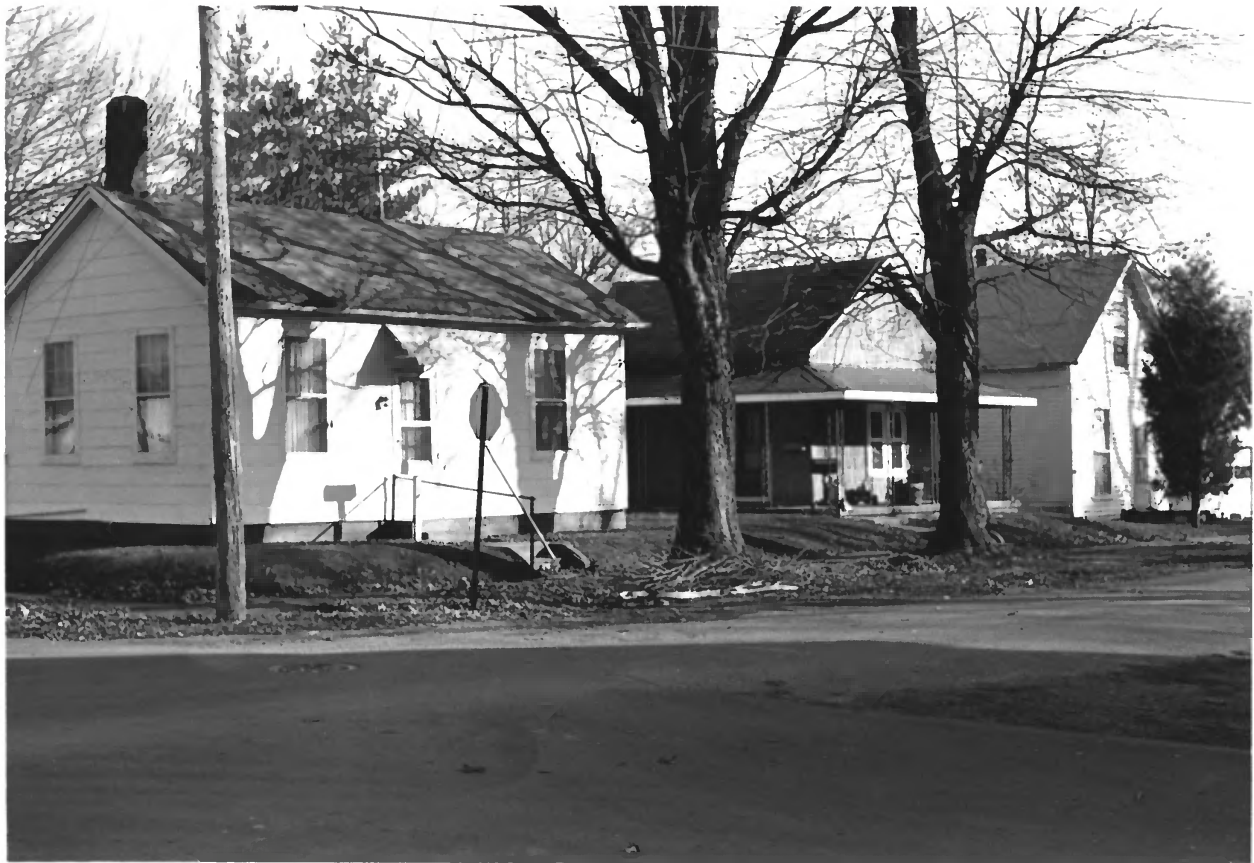
1. 426-454 N. Washington Street
& 136 E. Morgan Street
Knightstown Historic District
2. Knightstown, Indiana
3. William L. Selm
4. November, 1985
5. Historic Knightstown, Inc.
6. Looking northwest
7. 87 of 91



1. 228 & 236 N. Jefferson Street
at SW corner of Jefferson &
Carey Streets, Knightstown
Historic District
2. Knightstown, Indiana
3. William L. Selm
4. November, 1985
5. Historic Knightstown, Inc.
6. Looking southwest
7. 88 of 91



1. North side of Warrick Street
(18-30 E. Warrick & 206 N.
Jefferson St.) from N. Franklin
St. (131 N. Franklin St.)
Knightstown Historic District
2. Knightstown, Indiana
3. William L. Selm
4. November, 1985
5. Historic Knightstown, Inc.
6. Looking northeast
7. 89 of 91



1. 129, 131, & 137 N. Madison St.
at SE corner of Madison &
Warrick Streets, Knightstown
Historic District
2. Knightstown, Indiana
3. William L. Selm
4. November, 1985
5. Historic Knightstown, Inc.
6. Looking southeast
7. 90 of 91



1. 429-411 West Main Street at SE corner of Main Street & Hill Avenue, Knightstown Historic District
2. Knightstown, Indiana
3. William L. Selm
4. November, 1985
5. Historic Knightstown, Inc.
6. Looking southeast
7. 91 of 91