



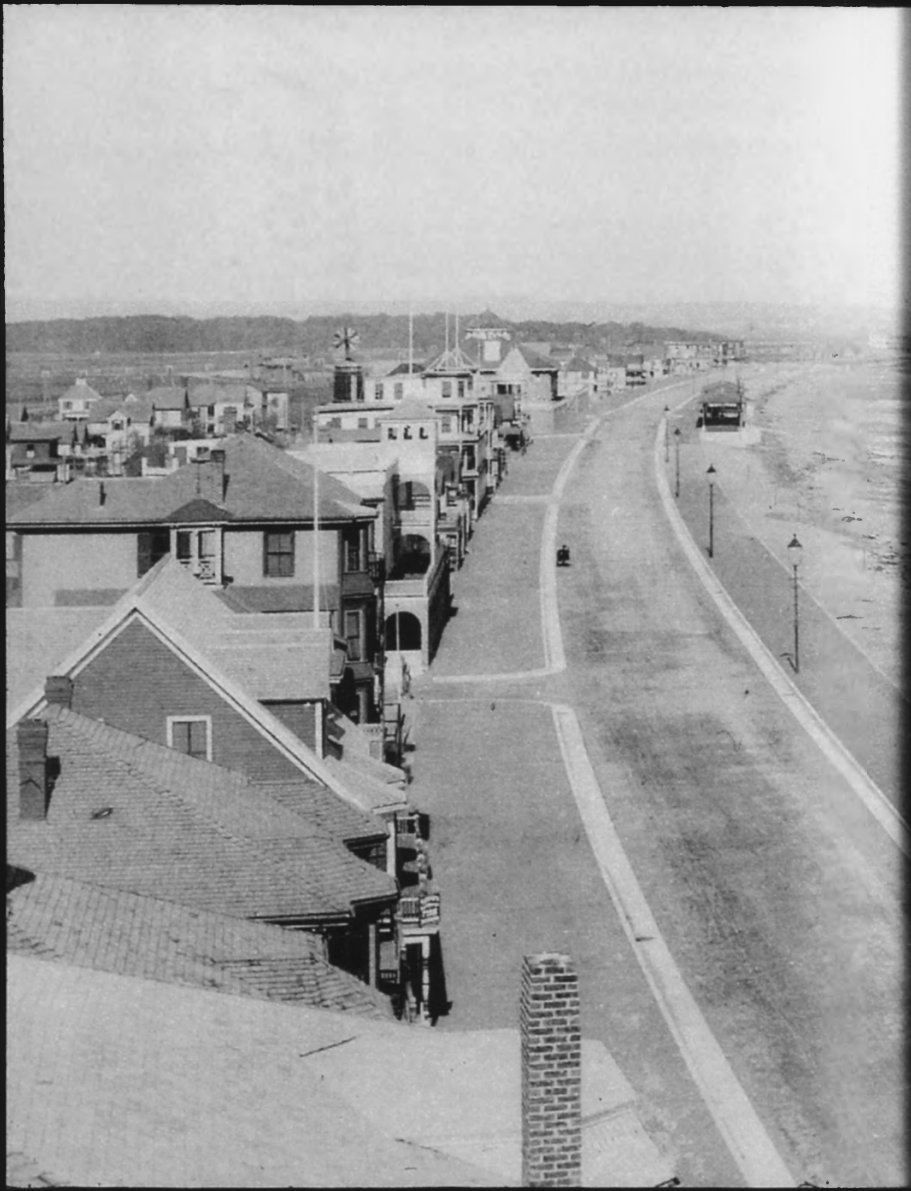
2. Revere Beach, Revere, MA
Revere Beach in 1892 before
the creation of Revere Beach Reservoir.
Photograph copied from the
Metropolitan Park Commission Report - 1896



3. Revere Beach, Revere, MA

View of Revere Beach near bathhouse
and bath house pavilions, 1902

Photo. copied from Charles Eliot, Landscape Architect (1902)



4. Revere Beach, Revere, MA

Elevated View of Revere Beach Boulevard, 1902

Photo. copied from Charles Eliot, landscape architect (1902)

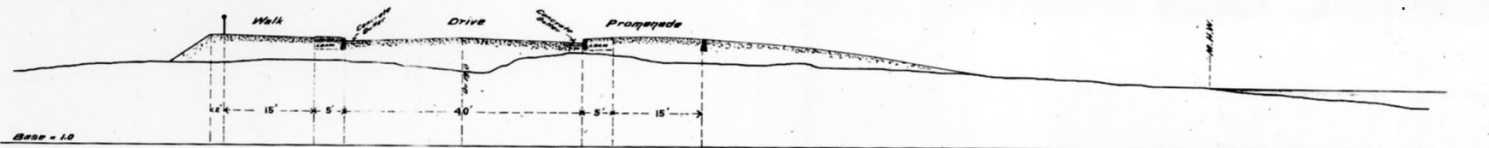
→ Proposed Sections for Revere Beach Reservation ←

Revere Street to Northern Circle

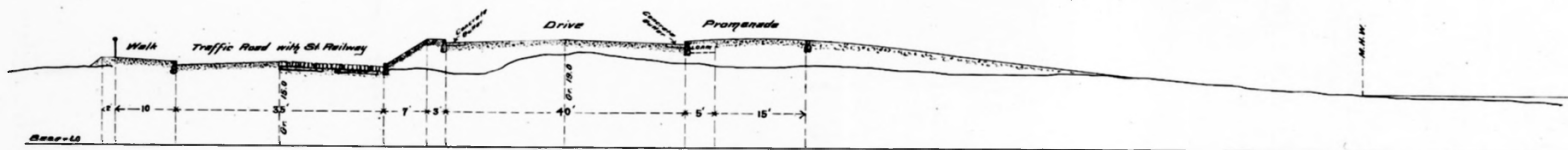
REVERE, MASS

Scale 10 ft. to an inch

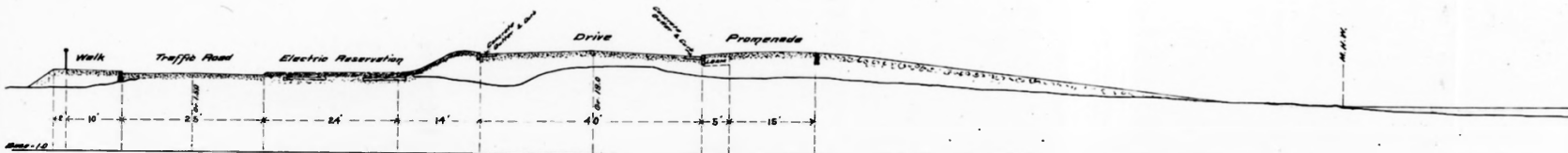
Oct. 24, 1898.



Section 'A'



Section 'B'



Section 'C'

~~67~~ Revere Beach, Revere, MA

© 1884 Plans & Drawings Collection

Plan # 1539-63 Revere Beach Reservation

Proposed Sections / Revere St. to Northern Circle, Revere
Oct 24, 1898

Courtesy of the National Park Service,
Frederick Law Olmsted NPS

5



REVERE BEACH RESERVATION
Part of a Sunday Crowd

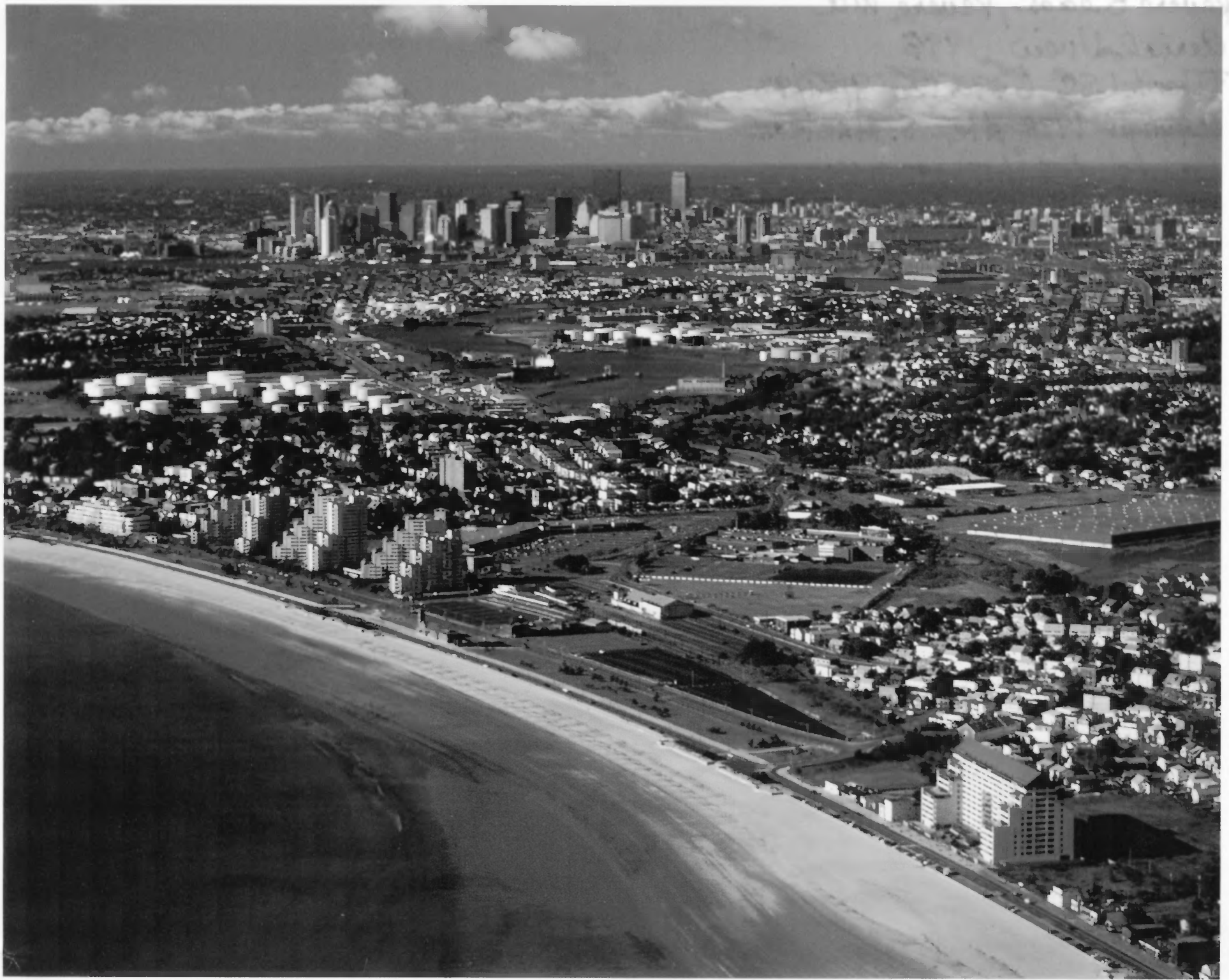
AERIAL VIEW OF REVERE BEACH, 1930s

MASS. STATE ARCHIVES, RECORD SERIES EN 4/1252, BOX 4



7. Revere Beach, Revere MA
Bandstand & Bandstand Pavilions looking
North towards Police Station.

Photographer: Keith Morgan
Dec. 2000



Revere Beach, Revere, Ma

Aerial View 1998

File # LSC 6390.12 - 9/21/97

Copyright 1998 Alex S. Maclean

Landslides (617) 497-9400

Fax (617) 491-9116

33 Richdale Avenue, Cambridge Ma. 02140



Revere Beach, Revere, MA.

Crescent of Revere Beach looking
north from Charles Eliot Circle

Photographer: Keith N. Morgan

Date: December, 2000



Revere Beach, Revere, MA

Revere Street Pavilion
looking South

Photographer: Keith N. Margon

Date: December, 2000



STATE POLICE
RECORDS

10. Revere Beach, Revere, MA

Revere Beach Police Station, looking South

Photographer: Keith N. Morgan

Date: December, 2000



Revere Beach, Revere MA
Revere Beach Superintendent
Residence, 1 East Circle
Photographer: Kurt M. Morgan
Date: December, 2000



12. Revere Beach, Revere, MA.

Bandstand and Bandstand
Pavilions looking towards the
Atlantic Ocean

Photographer: Keith N. Morgan

Date: December, 2000



Revere Beach, Revere. MA

Oak Island Avenue Pavilion
looking northeast to Nahant

Photographer: Keith N. Morgan

Date: December, 2000



ROTARY
STATE LAW
NO RIGHT TURN ENTERING

Revere Beach Boulevard

Revere, MA July 2002

#1

ELIOT CIRCLE LOOKING NW



Revere Beach Boulevard

Revere, MA

#2 July 2002

LOOKING N ALONG BOULEVARD



Revere Beach Boulevard

Revere, MA

JULY 2002

#3

FACING N, NEAR ORIGINAL PAVILIONS

AND BANDSTAND

<No. 19 > 043 ©
0040 37 N N N-8 NN AC-01 GR08 21017 100



Revere Beach Boulevard
Revere, MA

#4 JULY 2002

LOOKING N NEAR SHIRLEY ST.

<No. 26 >047 © BN
0040 07 N N N-8 NN AC-01 GR08 Z101/100

POLICE SUBSTATION IN DISTANCE



Revere Beach Boulevard

Revere, MA

#5 July 2002

LOOKING S